

APPLICATION:

PRODUCT NAME:

CTL VLV 4BSLH RIG

JOB NAME:

MODEL:

QUANTITY:

ITEM NO.:

☐ 2600 WITH SWIVEL STEMS☐ 2600-CV WITH CHECK STEMS

OPTIONS OR MODIFICATIONS:

☐ OTHER \_\_\_\_\_

## FEATURES

## CONTROL VALVE

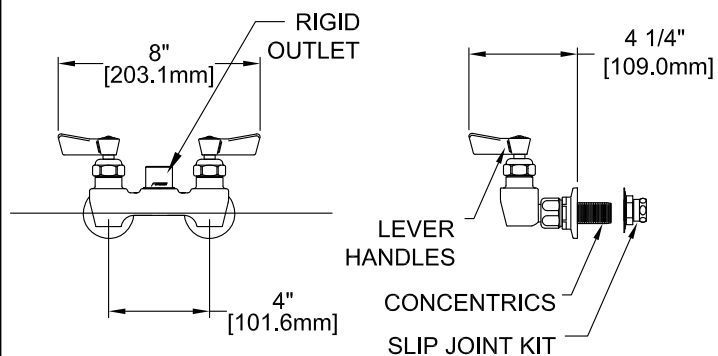
- \* 4" BACKSPLASH
- \* HOT SIDE STEM - RIGHT HAND
- \* COLD SIDE STEM - LEFT HAND
- \* STAINLESS STEEL SEATS
- \* STAINLESS STEEL SEAT SCREWS
- \* STAINLESS STEEL HANDLE SCREWS

## SYSTEM LIMITS

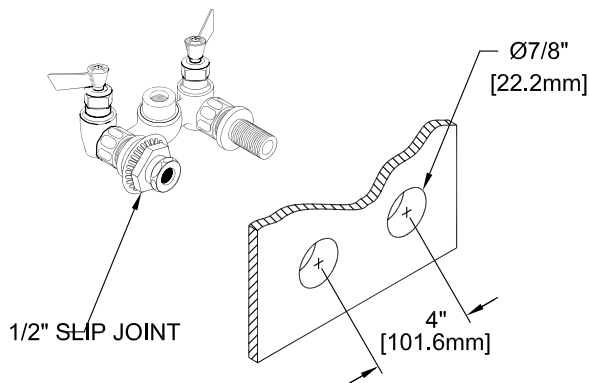
- \* TEMP: 40°F MIN. TO 160°F MAX.
- \* PRESSURE: 200 PSI MAX. STATIC

## SHIPPING WEIGHT

- \* 3.75 LBS



## ROUGH-IN



# FISHER

FISHER MANUFACTURING COMPANY  
TOLL FREE: 800-421-6162 - FAX: 800-832-8238  
information@fisher-mfg.com - www.fisher-mfg.com