

## 9 Technical data

### 9.1 Dimensions

#### Stand-alone version: CSP

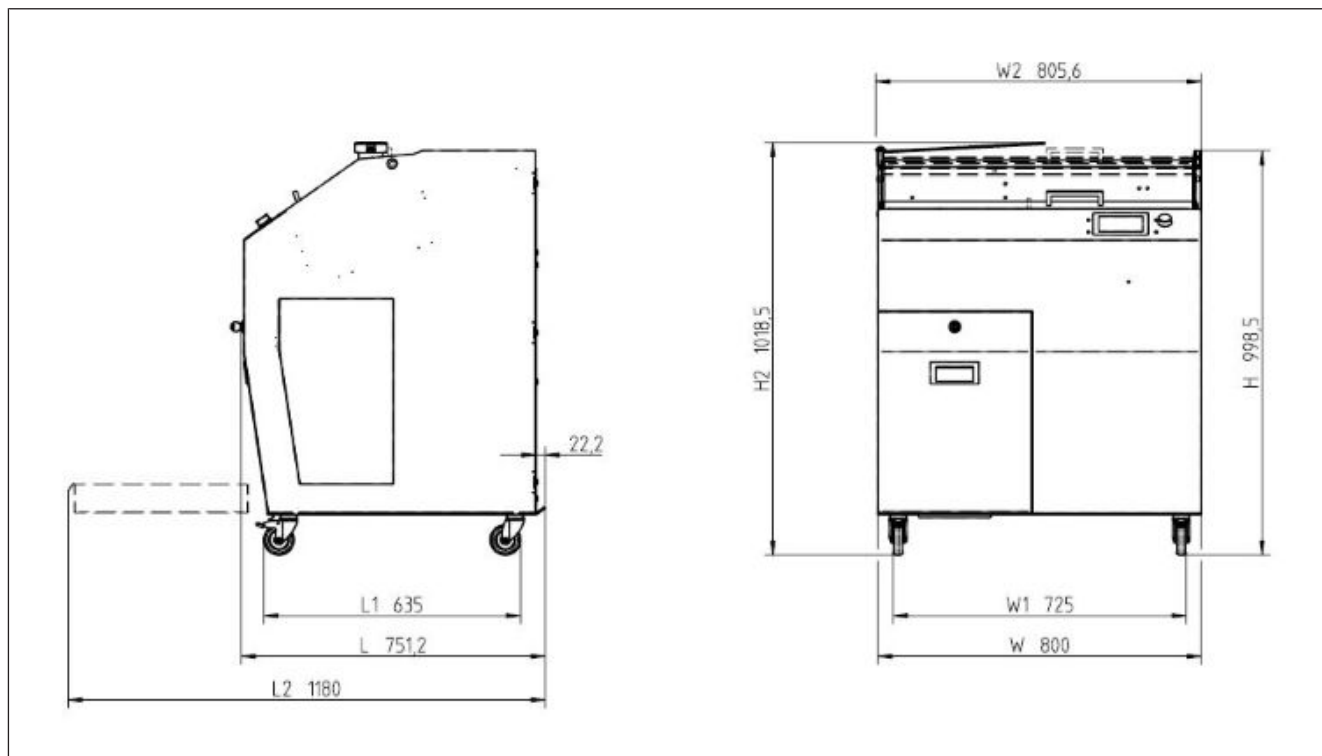


Fig. 65: Variant 1: Operation by operator

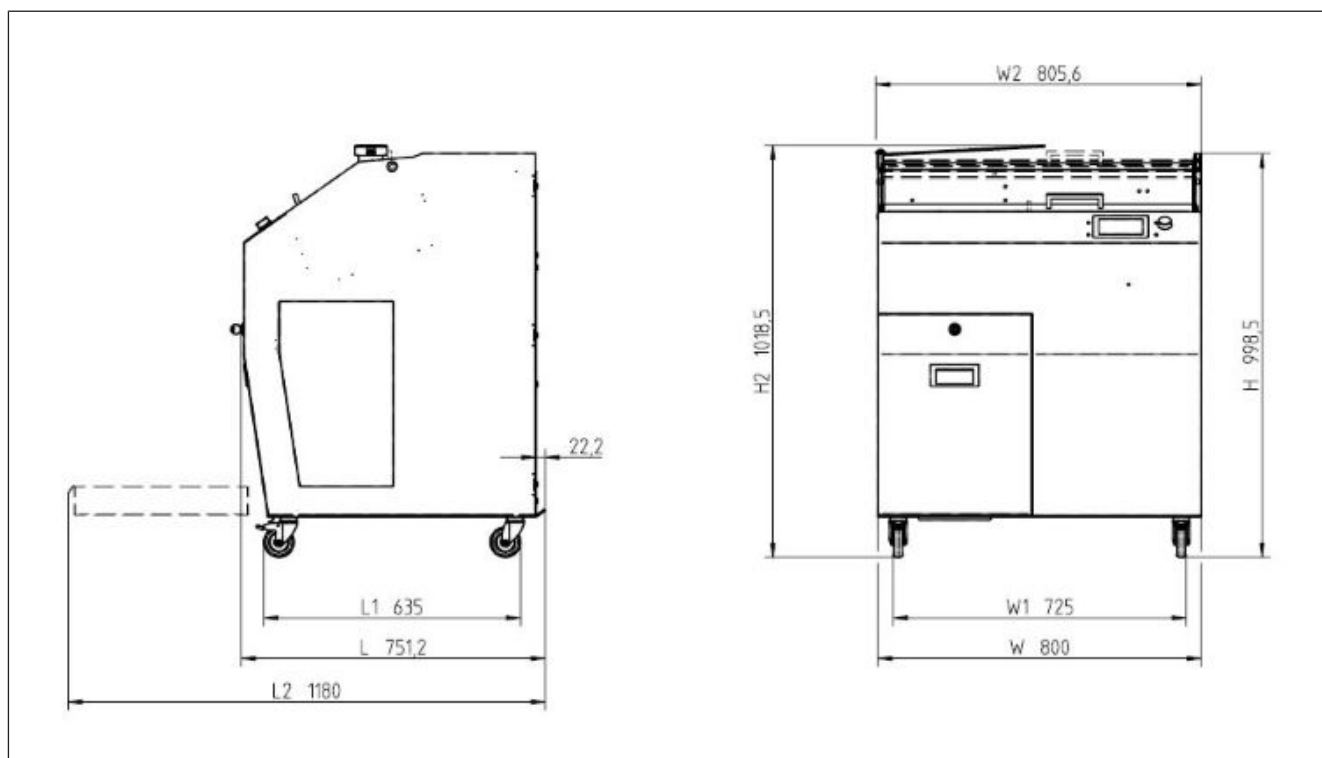


Fig. 66: Variant 2: Self-service

## Built-in version CSP I

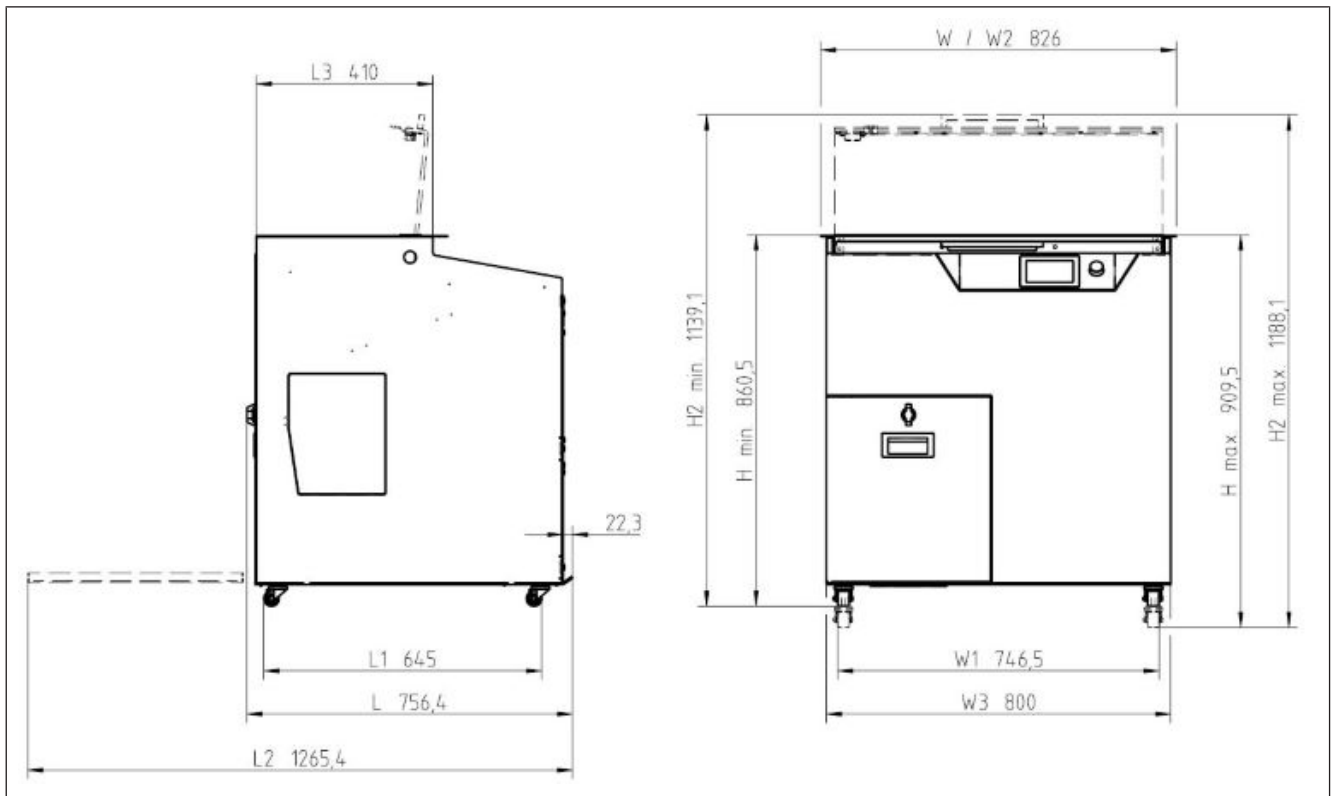


Fig. 67: Variant 1: Operation by operator

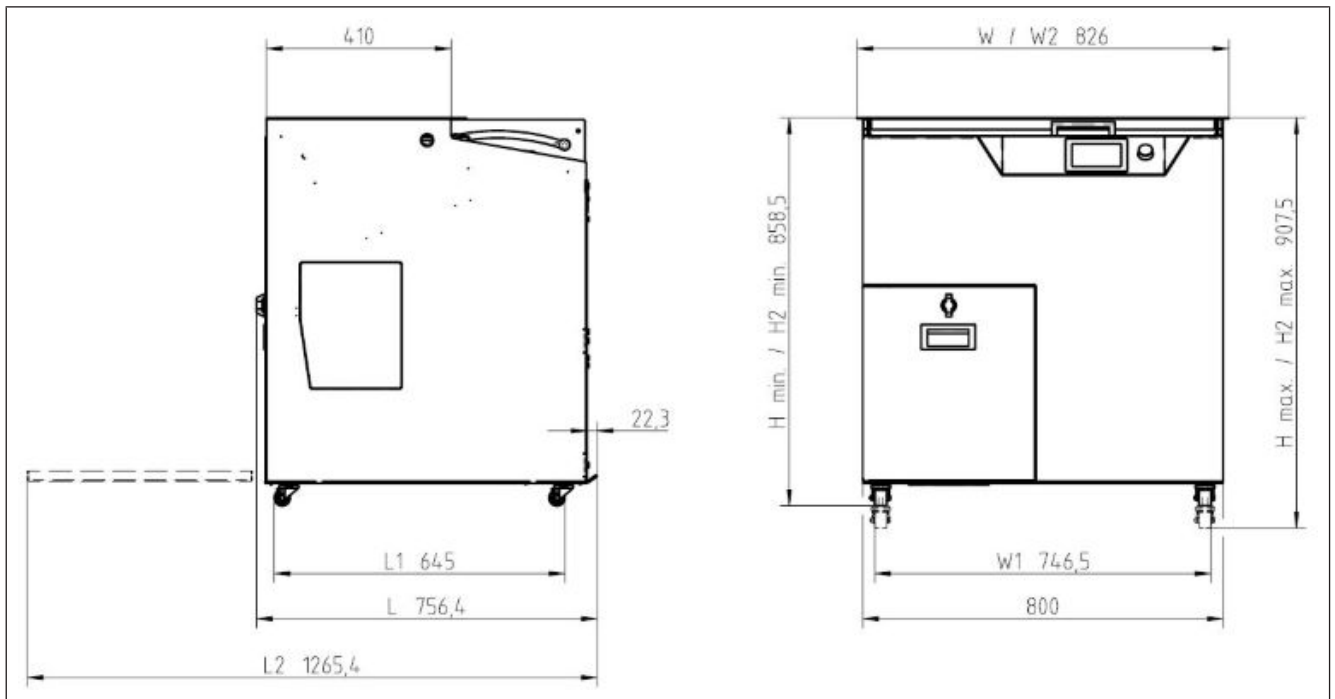


Fig. 68: Variant 2: Self-service

|                          | Dimensions  | Remarks |
|--------------------------|---|---------|
| Width                    | 80 cm   |         |
| Height                   | 100 cm  |         |
| Depth                    | 75 cm   |         |
| Bread chute width        | 32 cm   |         |
| Bread chute length       | Operation by operator: 39 cm<br>Self-service: 38 cm |         |
| Bread chute height       | 14.2 cm   |         |
| Slicing performance      | 200 slices per minute                               |         |
| Slice thickness          | 4 - 24 mm   |         |
| Weight                   | approx. 185 kg                                      |         |
| Noise development        | 66 db(A)  |         |
| Blade diameter Ø         | 420 mm  |         |
| Housing material         | Construction steel powder coated / stainless steel  |         |
| Electric motor           | 220 - 240 V / 120 V                                 |         |
| Current consumption max. | 2 A / 4,6 A   |         |
| Power consumption max.   | 1.1 kW  |         |
| Mains frequency          | 50 Hz / 60 Hz                                       |         |

## 9.2 Ambient conditions

### – Ambient temperature

for operation and storage: +10 to +40°C (+50 to +104 degF)

### – Humidity

IP23 protection. High air humidity and the formation of condensation water can result in damage to the machine.

### – Relative humidity

for operation and storage: 90 % (condensation of the unit is not permissible)

### – Air convection

Free air convection must be able to form around the device in order to avoid overheating.

### – Required lighting

500 Lux

### 9.3 Safety-relevant components

#### Solenoid interlock:

| Designation        | Bizerba number  |
|--------------------|---|
| Unlock chute cover | 38183372000 Safety Switch TK1-528AB024M   |
| Sensor locking     | 38205918000 Safety sensor 114 + 38205975000 Machine Safety Switch Magnet 30427502 |

#### Safety switch:

| Designation                             | Bizerba number  |
|---|---|
| Chute cover                             | 38210247000 Inductive sensor AI905 5m   |
| Maintenance opening (crumb compartment) | 38205918000 Safety sensor 114 + 38205975000 Machine Safety Switch Magnet 30427502 |

#### Standstill monitoring / position detection:

| Designation         | Bizerba number                        |
|---------------------|---------------------------------------|
| Blade pulse counter | 38210247000 Inductive sensor AI905 5m |
| Blade rotary arm    | 38210247000 Inductive sensor AI905 5m |