



Item #: _____
Quantity: _____
Model #: E1-DDF-
Project #: _____

E1 Flush-Mount Drop-In Dispensers



Model #: E1-DDF-1VH

- One-hole flush-mount drop-in dispenser
- Thin, low-profile flush flange
- Holds one (1) E1 Insert vertically or horizontally
- Enclosed bottom contains debris and spills
- All welded 304 stainless steel construction
- 12" x 17 1/4" x 6" overall dimensions
- Made in the U.S.A.



Model #: E1-DDF-2V

- Two-hole flush-mount drop-in dispenser
- Thin, low-profile flush flange
- Holds two (2) E1 Inserts vertically
- Enclosed bottom contains debris and spills
- All welded 304 stainless steel construction
- 22 3/4" x 17 1/4" x 6" overall dimensions
- Made in the U.S.A.



Model #: E1-DDF-3V

- Three-hole flush-mount drop-in dispenser
- Thin, low-profile flush flange
- Holds three (3) E1 Inserts vertically
- Enclosed bottom contains debris and spills
- All welded 304 stainless steel construction
- 33 1/2" x 17 1/4" x 6" overall dimensions
- Made in the U.S.A.

Product Specification:

Steril-Sil model #E1-DDF- Flush-Mount Drop-In Dispenser. Works exclusively with the Steril-Sil E1 Silverware Handling System and accepts Steril-Sil E1 Inserts. Unit includes an enclosed base to contain debris and spills. All welded 304 stainless steel construction. Made in the U.S.A.

Steril-Sil, LLC

1050 Commonwealth Avenue
Boston, MA 02215
Phone: 800-784-5537
Fax: 617-739-5063
Email: sales@sterilsil.com
www.sterilsil.com

Notes:

E1 Flush-Mount Drop-In Dispensers



Model #: E1-DDF-3V

Model #: E1-DDF-2V

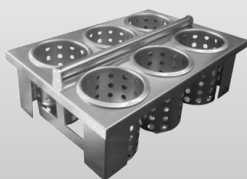
Model #: E1-DDF-1VH

E1 Flush-Mount Drop-In Dispensers

Designed for use with Steril-Sil Silverware Handling System

Model #	Description	Overall Dimensions			Cutout Dimensions		Ship #
		Length	Width	Height	Length	Width	
E1-DDF-1VH	1-hole E1 flush-mount drop-in countertop dispenser with solid bottom holds one (1) E1 insert horizontally or vertically	12"	17.25"	6"	10.25"	15.5"	8 lbs.
E1-DDF-2V	2-hole E1 flush-mount drop-in countertop dispenser with solid bottom holds two (2) E1 inserts vertically	22.75"	17.25"	6"	21"	15.5"	14 lbs.
E1-DDF-3V	3-hole E1 flush-mount drop-in countertop dispenser with solid bottom holds three (3) E1 inserts vertically	33.5"	17.25"	6"	31.75"	15.5"	18 lbs.

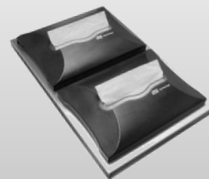
Available Accessories:



E1-BS-6OE-W
Drop-In Silverware basket



E1-1N5-2SD-1VH
Napkin & Straw Dispenser



E1-N5D-1VH
Dual Napkin Dispenser



S-500
Silverware Cylinder