



STAINLESS STEEL

SQUARE CORNER MULTI-STATION HAND SINKS

Item #: _____ Qty #: _____

Model #: _____

Project #: _____

Manual Operated
(Faucet Not Included)



19-18-40 Shown



19-18-40EF Shown

Electronic Faucet



Knee Valve



19-18-40KV Shown



19-18-40FV Shown



Toe-Push Valve

FEATURES:

10" high backsplash.

8" sink bowl depth.

Stainless steel "Z" brackets (2) supplied each unit.

3 1/2" basket drain(s). 100" Sinks have 2 drains. 120" Units have 3 drains.

Support Bracket Units includes tubular stainless steel supports that allow full clearance underneath.

Toe-Push Units includes tubular stainless steel legs with adjustable stainless steel bullet feet.

Additional Features:

Manual Operated Units: Faucet not included. 8" O.C. holes provided.

Electronic Faucet Units (EF): Plug/Battery Operated Electronic Faucet(s).

Knee Valve Operated Units (KV): Knee Operated Valve(s).

Toe-Push Operated Units (FV): Toe-Push Operated Pedal(s).

CONSTRUCTION:

All TIG welded.

Welded areas blended to match adjacent surfaces and to a satin finish.

Die formed tubular wall brackets.

MATERIAL:

All 16 gauge type "304" stainless steel.

1 5/8" tubular "304" stainless steel wall brackets or

1 5/8" tubular "304" stainless steel legs with bullet feet.

Stainless steel gussets.

MECHANICAL:

Supply is 1/2" hot and cold for knee and foot valve units.

Faucet holes 8" on centers for manual operated units.

	MANUAL FAUCET OPERATED	ELECTRONIC OPERATED	KNEE VALVE OPERATED	TOE-PUSH OPERATED	# of Faucets	Wt.	Cu. Ft.
Length	Model #	Model #	Model #	Model #			
23"	19-18-23†	19-18-23EF	19-18-23KV	19-18-23FV**	1	50 lbs.	10
40"	19-18-40†	19-18-40EF	19-18-40KV	19-18-40FV**	2	60 lbs.	15
60"	19-18-60†	19-18-60EF	19-18-60KV	19-18-60FV**	3	70 lbs.	18
80"	19-18-80†	19-18-80EF	19-18-80KV	19-18-80FV**	4	90 lbs.	22
100"	19-18-100†	19-18-100EF	19-18-100KV	19-18-100FV**	5	120 lbs.	30
120"	19-18-120†	19-18-120EF	19-18-120KV	19-18-120FV**	6	155 lbs.	36

†Add K-472 For Faucet Hole Revision

**Toe-Push Operated Sinks Include Wall Bracket & Are Floor Mounted

Floor Model Modification Available for above Sinks
Includes Stainless Steel Legs with Flanged Feet with Sides
& Rear Cross Bracing
Add Model # FS-CB-2



MODEL	Optional Accessories	QTY
K-13	S/S Soap Dispenser	_____
K-13WMS	Factory Install K-13 to Backsplash	_____
K-472	Faucet Hole Revision	_____
(To Modify Hole Punch Other Than 8" O.C. - Per Hole)		



Customer Service Available To Assist You 1-800-645-3166 8:30 am - 8:00 pm E.S.T.

For Orders & Customer Service:

Email: customer@advancetabco.com or Fax: 631-242-6900

For Smart Fabrication™ Quotes:

Email: smartfab@advancetabco.com or Fax: 631-586-2933

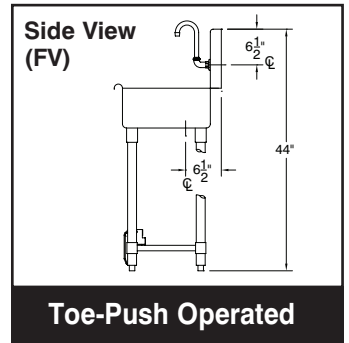
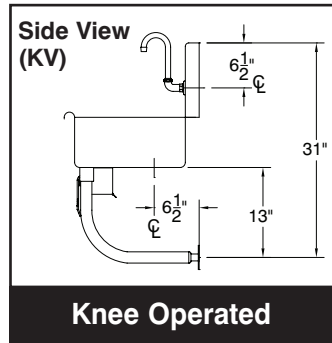
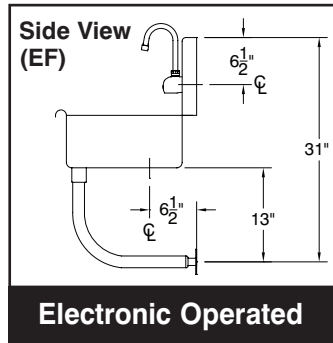
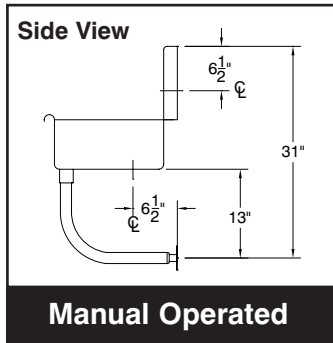
REF-B

23" TWO STATION SINKS

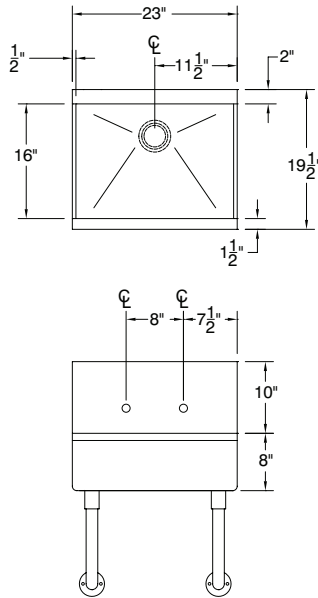
TOL $\pm .500"$

FITTINGS SUPPLIED AS SHOWN

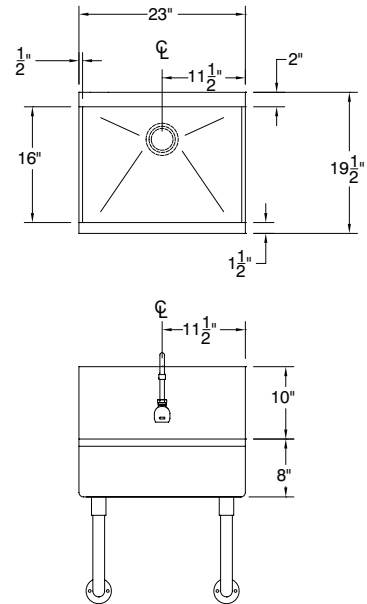
ALL DIMENSIONS ARE TYPICAL



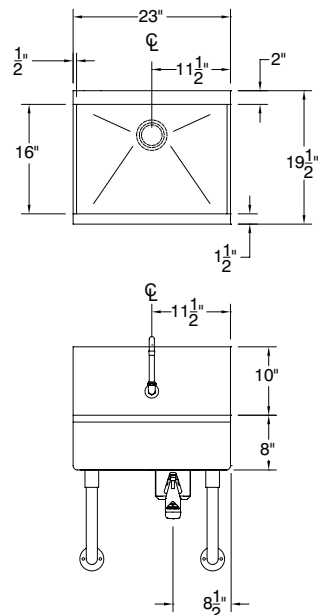
19-18-23 Manual Operated



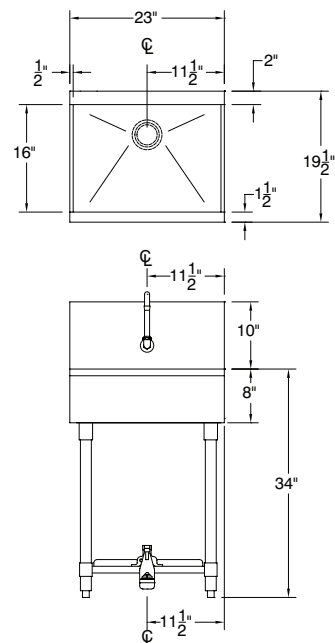
19-18-23EF Electronic Operated



19-18-23KV Knee Valve Operated



19-18-23FV Toe-Push Operated



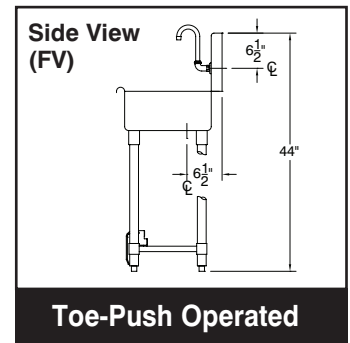
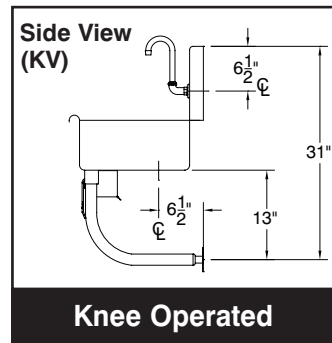
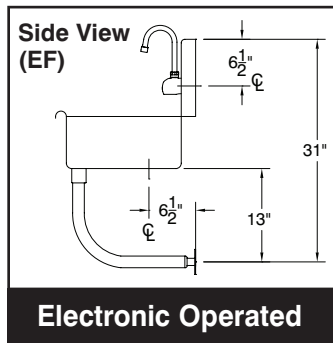
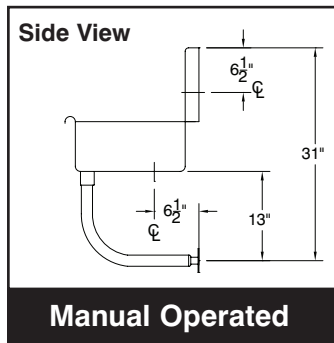
ADVANCE TABCO is constantly engaged in a program of improving our products. Therefore, we reserve the right to change specifications without prior notice.

40" TWO STATION SINKS

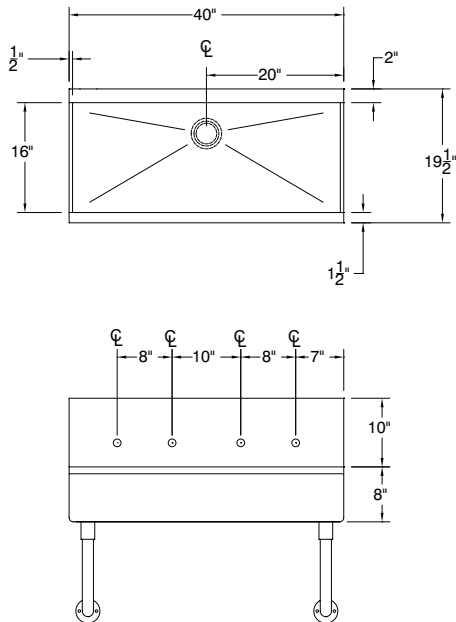
TOL ± .500"

FITTINGS SUPPLIED AS SHOWN

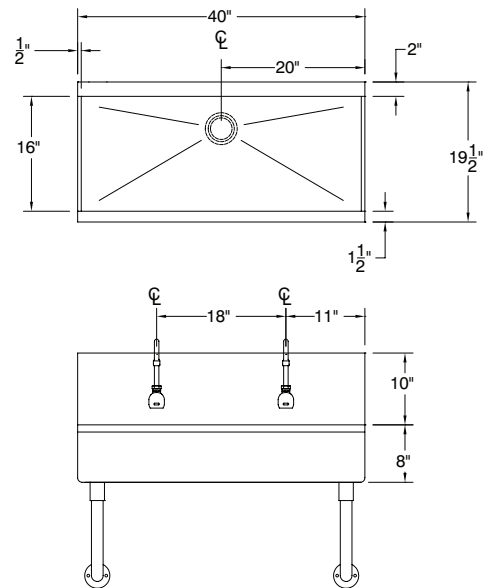
ALL DIMENSIONS ARE TYPICAL



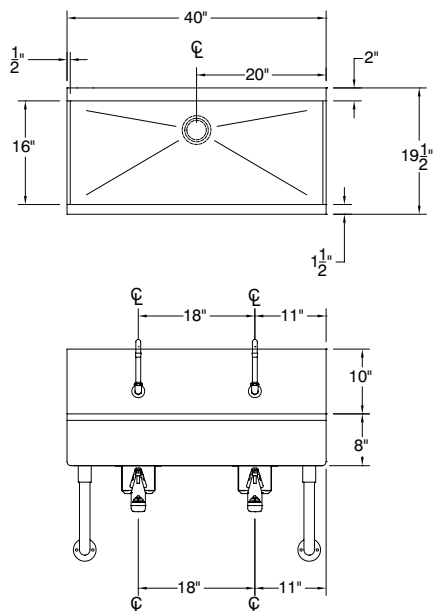
19-18-40 Manual Operated



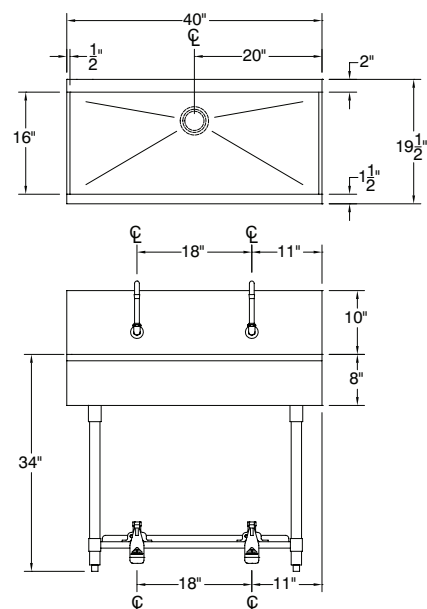
19-18-40EF Electronic Operated



19-18-40KV Knee Operated



19-18-40FV Toe-Push Operated



ADVANCE TABCO is constantly engaged in a program of improving our products. Therefore, we reserve the right to change specifications without prior notice.

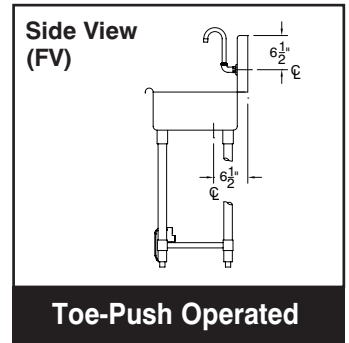
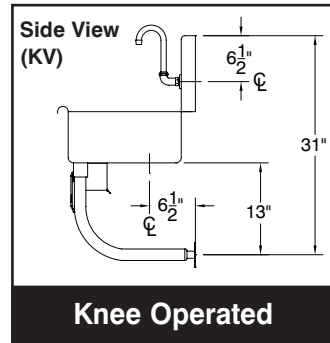
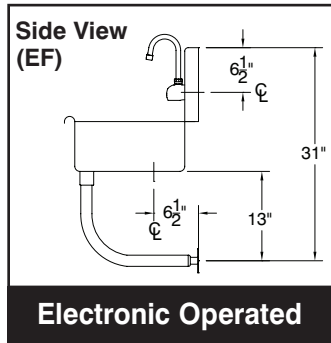
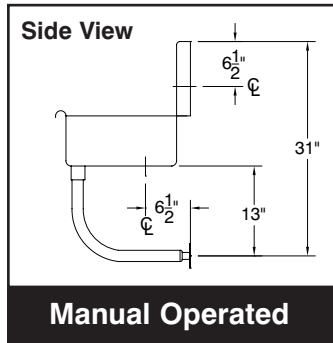
© ADVANCE TABCO, JANUARY 2018

60" THREE STATION SINKS

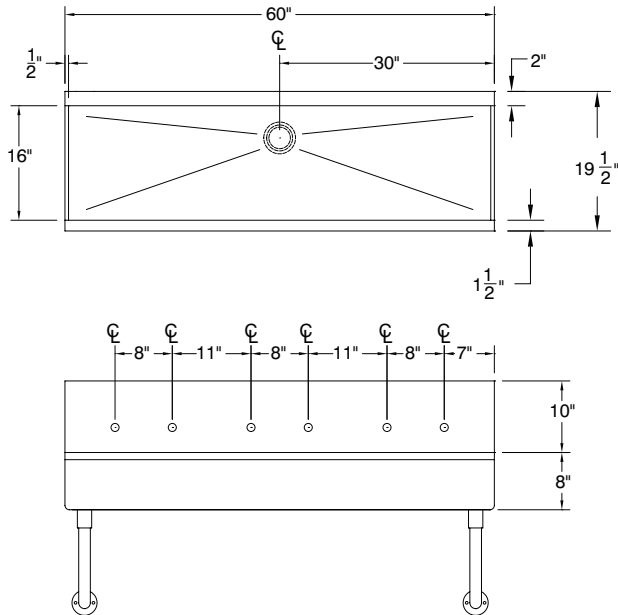
TOL ± .500"

FITTINGS SUPPLIED AS SHOWN

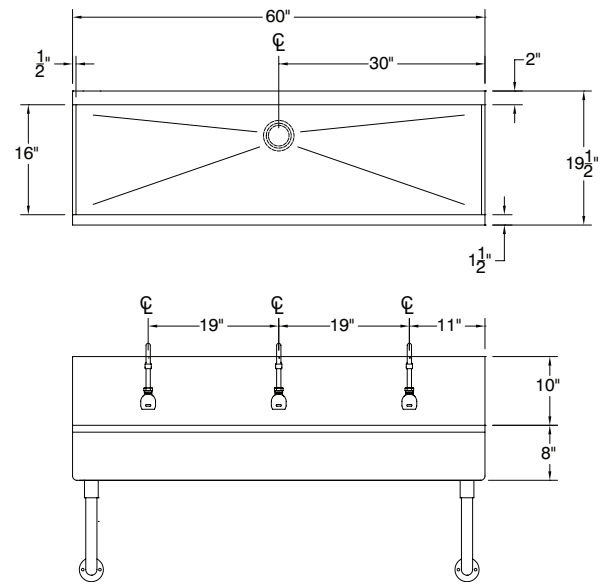
ALL DIMENSIONS ARE TYPICAL



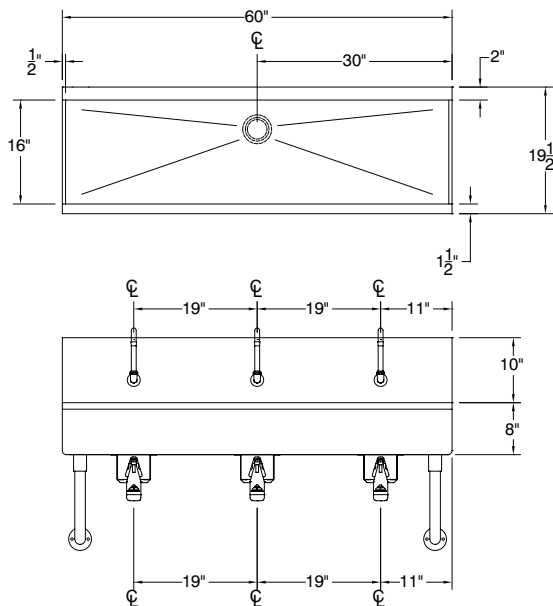
19-18-60 Manual Operated



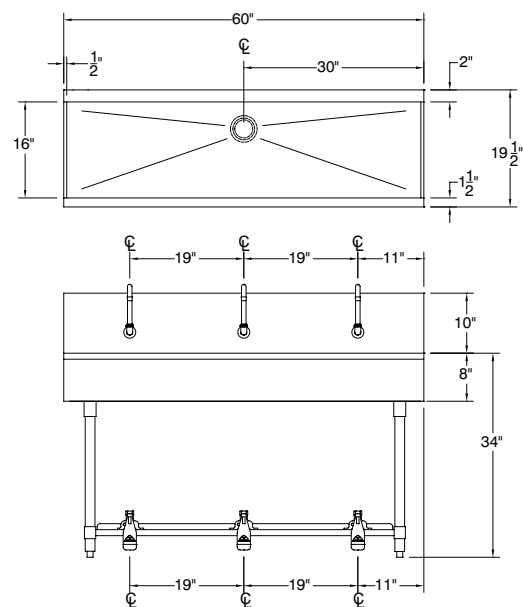
19-18-60EF Electronic Operated



19-18-60KV Knee Operated



19-18-60FV Toe-Push Operated



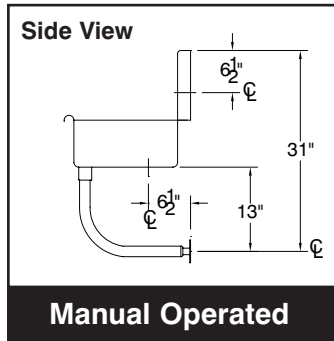
ADVANCE TABCO is constantly engaged in a program of improving our products. Therefore, we reserve the right to change specifications without prior notice.

80" FOUR STATION SINKS

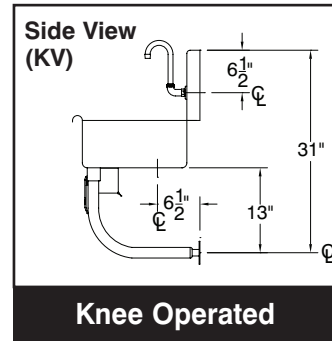
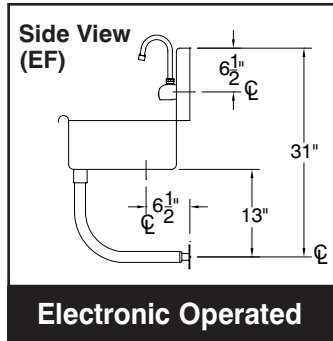
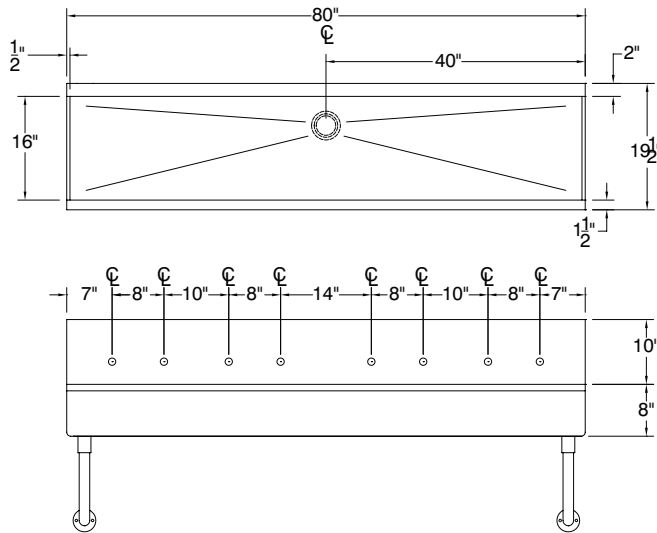
TOL ± .500"

FITTINGS SUPPLIED AS SHOWN

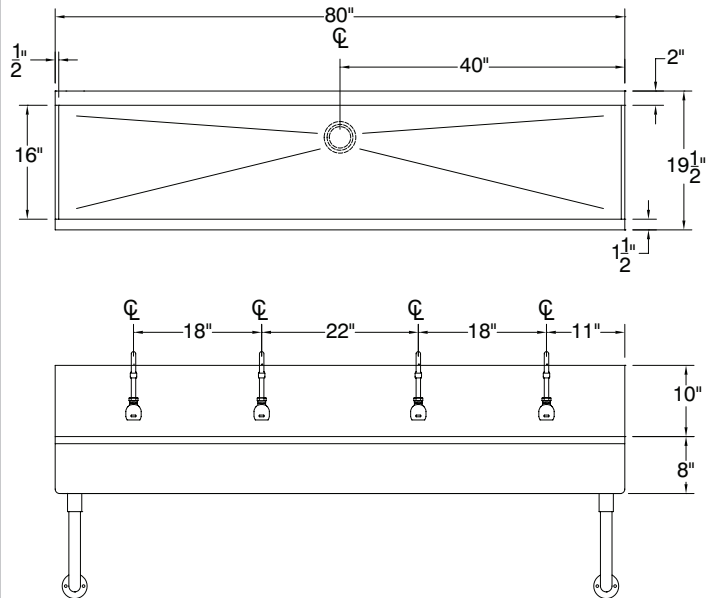
ALL DIMENSIONS ARE TYPICAL



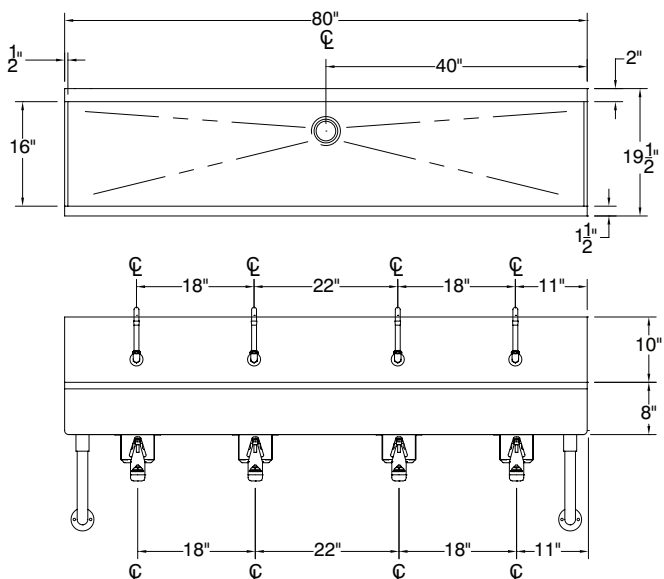
19-18-80 Manual Operated



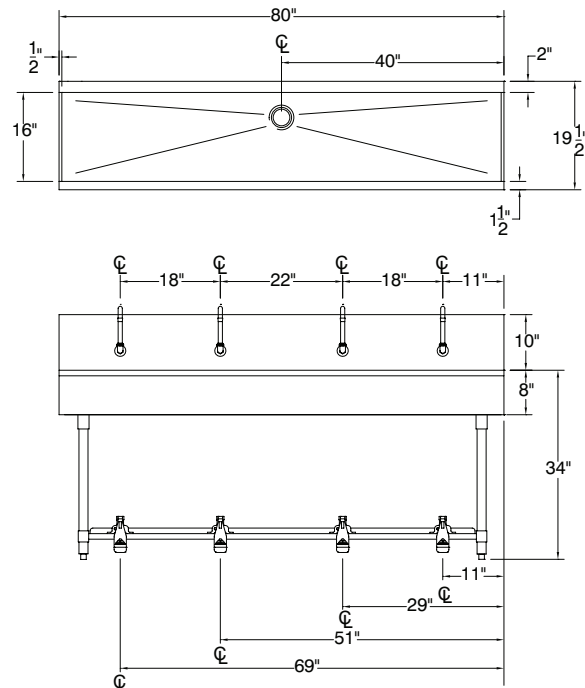
19-18-80EF Electronic Operated



19-18-80KV Knee Operated



19-18-80FV Toe-Push Operated



ADVANCE TABCO is constantly engaged in a program of improving our products. Therefore, we reserve the right to change specifications without prior notice.

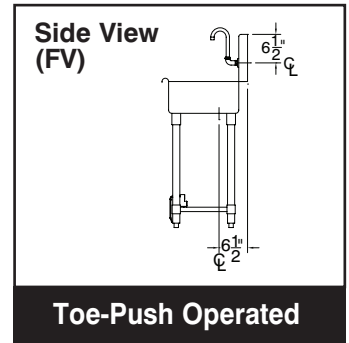
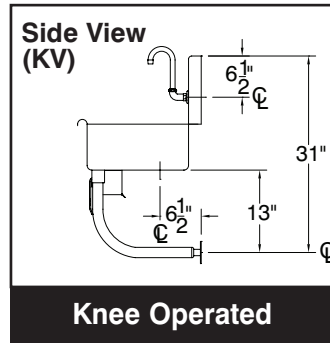
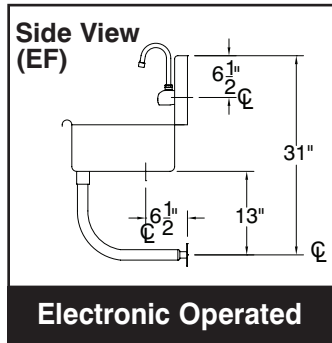
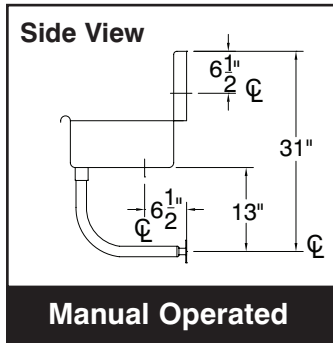
© ADVANCE TABCO, JANUARY 2018

100" FIVE STATION SINKS

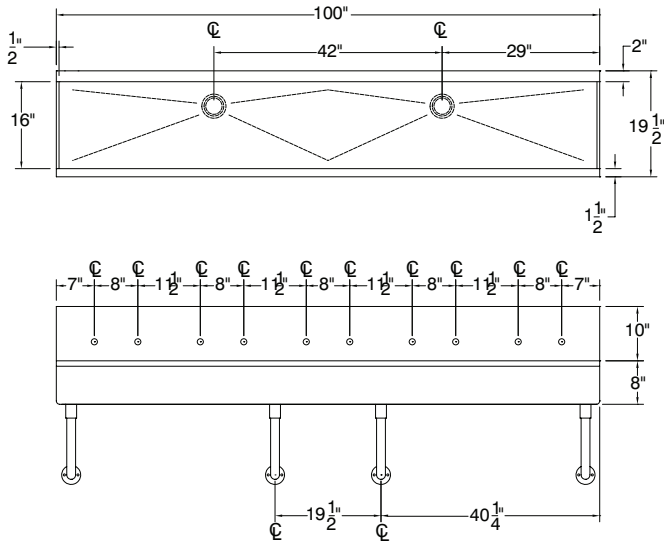
TOL ± .500"

FITTINGS SUPPLIED AS SHOWN

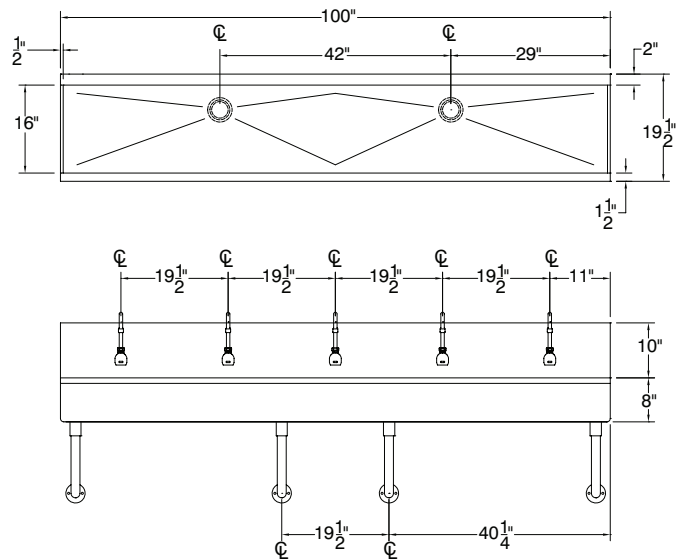
ALL DIMENSIONS ARE TYPICAL



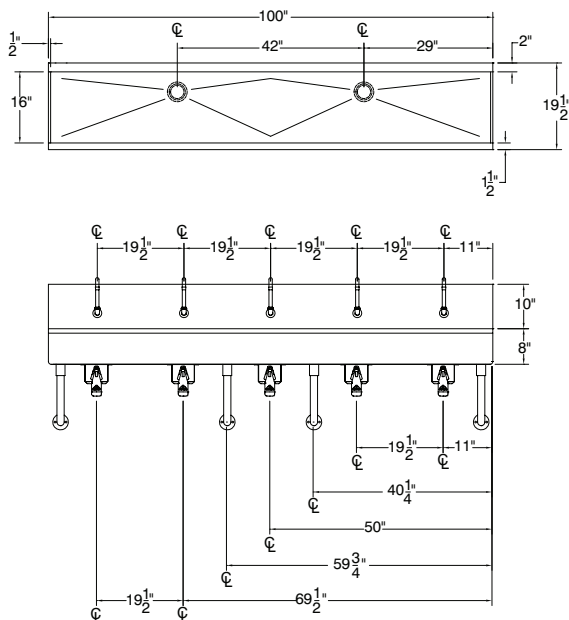
19-18-100 Manual Operated



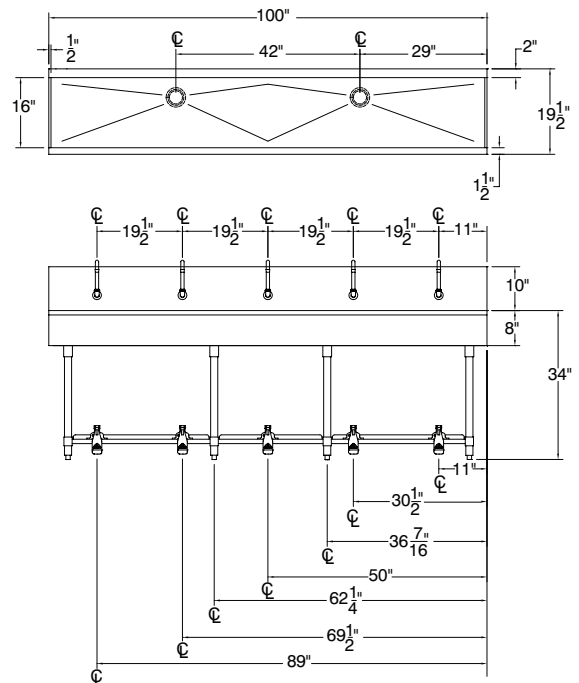
19-18-100EF Electronic Operated



19-18-100KV Knee Operated



19-18-100FV Toe-Push Operated



ADVANCE TABCO is constantly engaged in a program of improving our products. Therefore, we reserve the right to change specifications without prior notice.

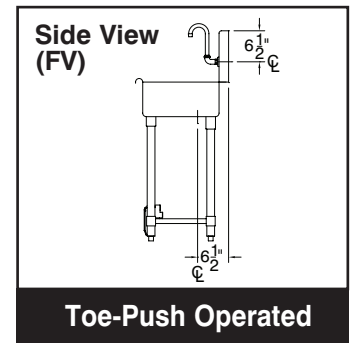
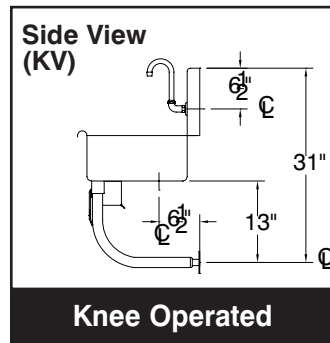
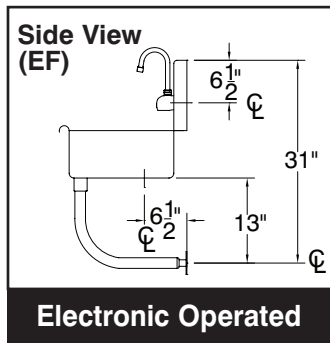
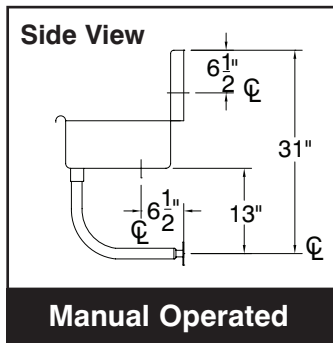
© ADVANCE TABCO, JANUARY 2018

120" SIX STATION SINKS

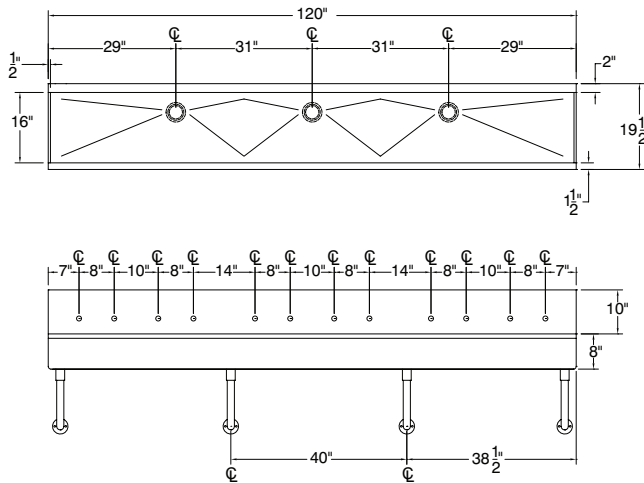
TOL ± .500"

FITTINGS SUPPLIED AS SHOWN

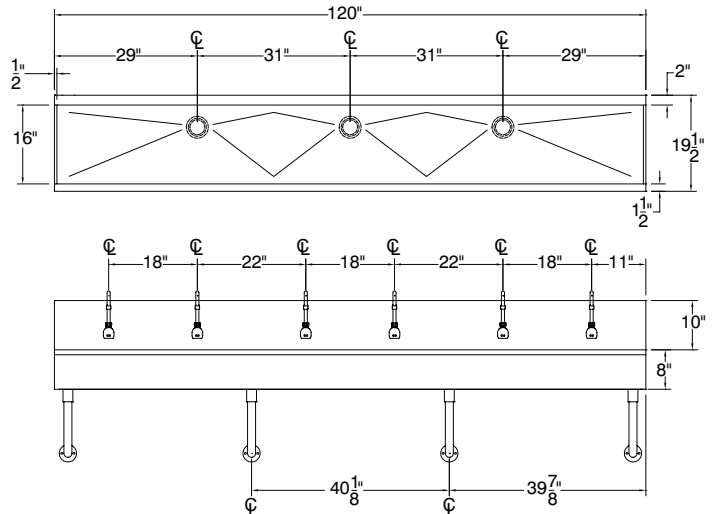
ALL DIMENSIONS ARE TYPICAL



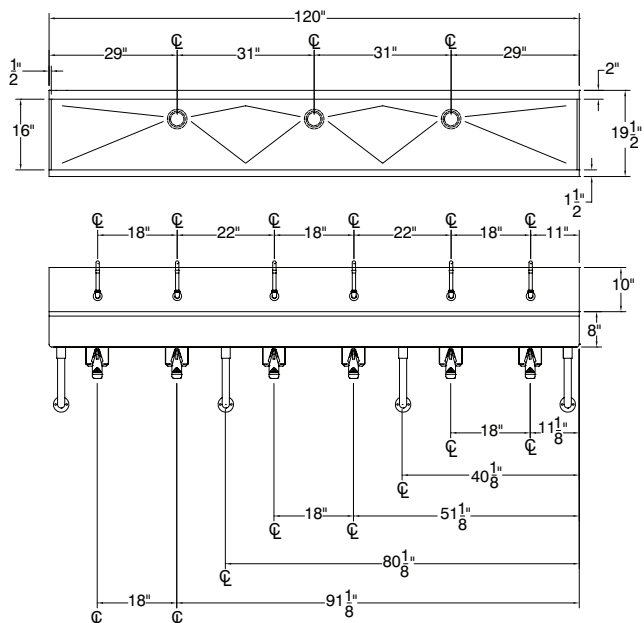
FC-WM-120 Manual Operated



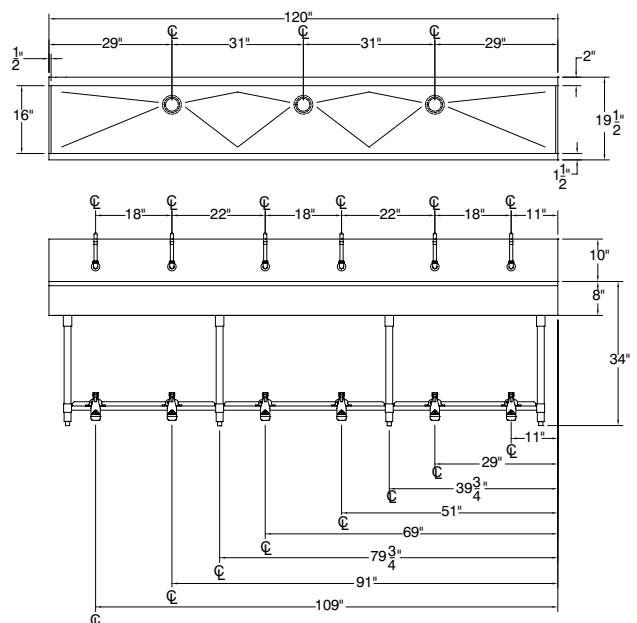
FC-WM-120EF Electronic Operated



FC-WM-120KV Knee Operated



FC-WM-120FV Toe-Push Operated



ADVANCE TABCO is constantly engaged in a program of improving our products. Therefore, we reserve the right to change specifications without prior notice.

© ADVANCE TABCO, JANUARY 2018