

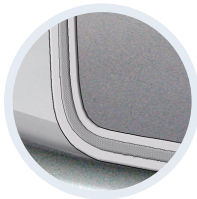


***INDUCTION READY* TRIPLE CLAD STAINLESS OVAL PAN WITH HOLLOW HANDLES**

COPPER TRIPLE CLAD OVAL PAN WITH SOLID STAINLESS STEEL HANDLES

Item No.	Size	Case
RTVH-080	8"	1
RTVH-100	10"	1
RTVH-120	12"	1

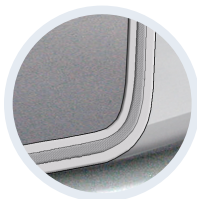
Item No.	Size	Case
RRVS-100	10"	1
RRVS-120	12"	1
RRVS-140	14"	1



HEAVY GAUGE TRIPLE CLAD
material from base to rim
provides optimum heat
control + induction capability



HOLLOW HANDLES
to efficiently dissipate heat
while maintaining comfort



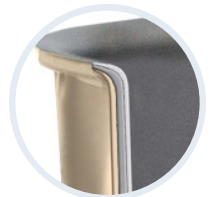
INDUCTION READY
external layer for full heat
efficiency across all surfaces



FULL COPPER EXTERIOR
premium high gloss
polished for maximum visual
impact



**NON-REACTIVE STAINLESS
STEEL INTERIOR**
to maximize durability, acid-
resistance, and versatility



TUXCORE™ ALUMINUM CORE
from base to rim for
maximum heat control



Tuxton China Inc.
21011 Commerce Pointe Drive
Walnut, CA 91789
Copyright 2024

LEAD FREE | FULLY VITRIFIED | MICROWAVE SAFE | OVEN PROOF | DISHWASHER SAFE



info@tuxton.com



909-595-2510



@tuxtonchina