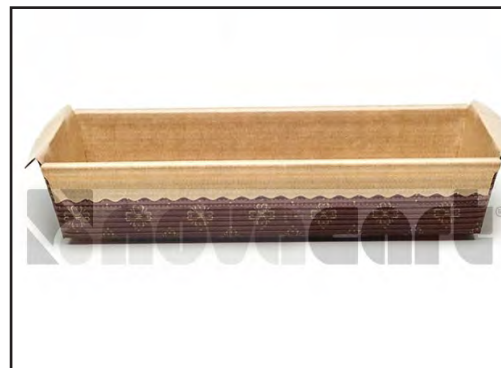


Technical Data

| | | Tolerance |
|--------------------|----------------------|-----------|
| Bottom (A) | 193 mm x 135 mm | ± 1 mm |
| Top (B) | 213 mm x 155 mm | ± 2 mm |
| Top + rim (D) | 167 mm | ± 2 mm |
| Height (H) | 35 mm | ± 1 mm |
| Paper basis weight | 170 g/m ² | ± 5 % |
| Mold weight | 11.2 g | ± 5 % |
| Heat resistance | 390° F max | |



Characteristics

| | |
|-------------------|--|
| Material | Single face "F" flute corrugate created from two sheets of 70 GSM pure unbleached paper, highly calendered. Smooth face creates the interior surface of the mold. Exterior surface is printed. FSC certified papers. |
| Printing | Gold flower design on brown background, exterior is printed prior to corrugation. |
| Ink | Gold PMS 872 C, Brown PMS 504 C, resistant to heat, oil and alcohol up to the recommended max baking temperature of 390 degrees F. |
| Glue | Vinyl acetate, water based. |
| Starch | Maize (corn based) used in the corrugation process of the paper. |
| FDA | Mold is manufactured in compliance with 21 CFR 176.170 and 176.180. |
| Kosher | Certified by KOF-K Supervision of Teaneck, New Jersey. |
| Country of origin | Italy |

Additional specification documents available upon request.

Packaging and Storage

| | |
|---------------|---|
| Case | 26 in x 18 in x 27 in |
| Cube | 7.313 ft ³ |
| Case weight | Gross 22 lbs. Net 20 lbs. |
| Pieces/case | 800 pcs. (100 pcs. * 8 rows) |
| Tie/high | 3 boxes per 3 levels at 85" high |
| Pieces/pallet | 7,200 pcs |
| Box Label | Item code, description, quantity, production number, production date, and operator. |
| Storage | Dry conditions |
| GTIN-14 | 18051768244044 |



(01)18051768244044(10)123456(15)991231(422)380

Prepared

Approved

Date

Revision

Modifications

Elisa Sartor
Quality Manager
Elisa Sartor



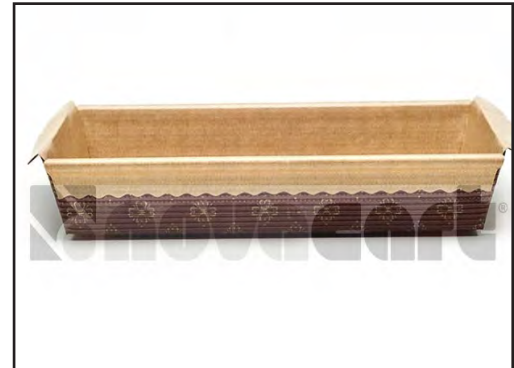
6/10/2024

1

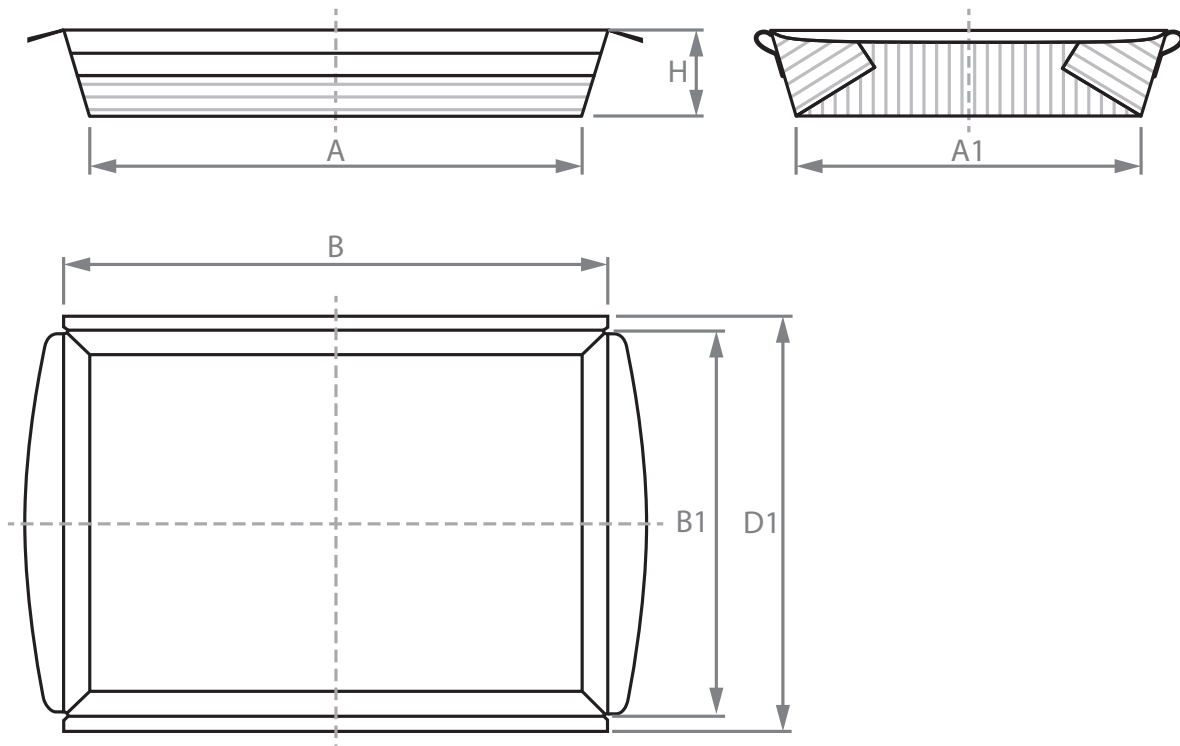
Rev. 1: General Modifications

Technical Data

| | | Tolerance |
|--------------------|----------------------|-----------|
| Bottom (A) | 193 mm x 135 mm | ± 1 mm |
| Top (B) | 213 mm x 155 mm | ± 2 mm |
| Top + rim (D) | 167 mm | ± 2 mm |
| Height (H) | 35 mm | ± 1 mm |
| Paper basis weight | 170 g/m ² | ± 5 % |
| Mold weight | 11.2 g | ± 5 % |
| Heat resistance | 390° F max | |



Technical Drawing



Prepared

Approved

Date

Revision

Modifications

Elisa Sartor
Quality Manager
Elisa Sartor



6/10/2024

1

Rev. 1: General Modifications