

Double your food's hold times safely, without sacrificing quality or flavor.

Vibrant LCD touchscreen is easy to use and can be seen across the kitchen, allowing crew to quickly determine food status.

2X hold times with patented dual-zone temperature controls.



Keep fried foods crispy and cooked foods tender with patented dual-zone temperature controls.

Timers notify crew when to cook more and color codes show which items to serve first.

Elevate Quality and Reduce Waste

- LCD Touchscreen with color-coded timers indicate the time remaining on products to ensure crew use first in first out method.
- Cook more alert notifies crew to avoid running out of food.
- Patented dual-zone temperature controls create the perfect holding environment allowing you to hold your food twice as long.

Menu Flexibility

- Dedicated pans to keep fried foods crispy and cooked foods moist.
- 6 dayparts, 36 menu pre-sets.
- Easy-to-update recipe names, heater temps, cook/cook more times, and dayparts.
- Support for English and Spanish languages.

Diagnostics Increase Serviceability

- Trouble-shooting error codes are automatically recorded to speed up trouble-shooting and servicing.

USB Port

- Quick and easy software updates.

Simplified Crew-Friendly Operations

- Intuitive iconographic controls are easy to use and eliminates language barriers.
- Colorful display can be seen from across the kitchen, allowing crew to quickly determine the food status.
- Manager passcode prevents unwanted or accidental setting changes.

50% More Holding Capacity

- Three 4" pans hold 50% more protein than standard 2 1/2" pans. Hold up to 9 different items at the same time.

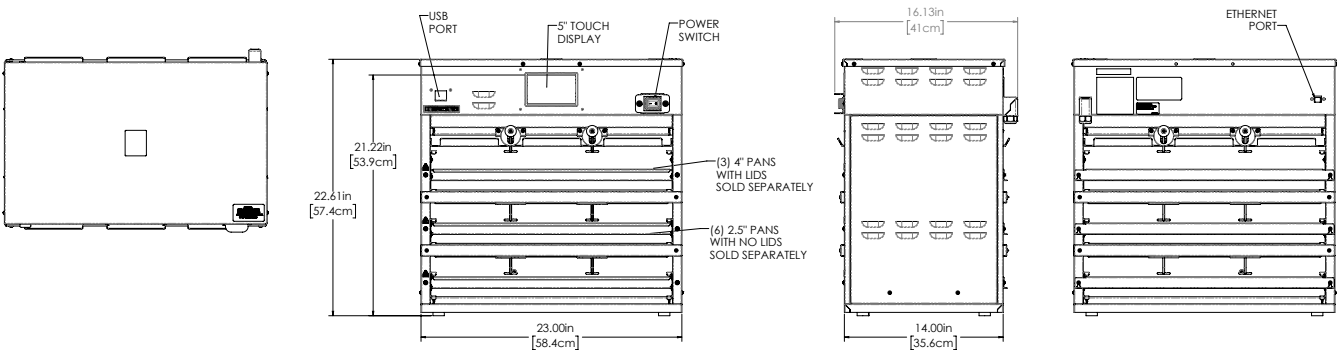
Easy To Clean

- Simple daily wipe-down.
- No difficult-to-clean crevasses or corners.

Durable Construction


- Minimize grease and heat migration from durable steel construction.
- Longer control board life cycles with enhanced protection.
- Easily convert unit to a full pass through bin.
- Counter top depth savings with angled power cord.

Whether it’s crispy chicken or juicy burgers, you can now hold your food **2X longer** without sacrificing quality or flavor, thanks to Prince Castle’s **patented dual-zone temperature controls.**



Technical Specification

Product Category	Product Holding Bin
Product Dimensions	19.2"W x 16.9"D x 26.8"H (48.7cm x 42.9cm x 68.1cm)
Power Requirements	120/1/60 Voltage/Ph/Hertz, 1920 Watts, 5-20P
Capacity	(3) 4" deep pans w/lids (6) 2.5" pans w/no lids
Exterior Construction	Stainless Steel
Unit Weight	65 lbs. (39 kg)
Pans/Lids	Unit includes (3) 4" pans (6) 2.5" pans (3) lids

Shipping Weight	86 lbs (36 kg)
Shipping Dimensions	27-1/8"L x 22-1/8"W x 26-5/8"H (68.9cm x 56.2cm x 67.6cm)
Warranty	1-Year: Parts & Labor
Agency Listing	

Model Number	Description	Voltage	Ph	Hertz	Power	Plug Style
PHB33N1-GMS02	HOLDING BIN PHB-GMS 3x3	115	1	60	1920 Watts	5-20P



To learn more about **Prince Castle PHB33** , visit princecastle.com
 To contact a Prince Castle representative, go to princecastle.com