


ZENIUS

ZENIUS / ZN100 PRO

Type 97373



 Please read the instructions and safety precautions (page 6) before operating the appliance.  
Merci de lire les instructions et les consignes de sécurité (page 7) avant l'utilisation de l'appareil.

EN

**First & regular use:**

Packaging content	3
Machine overview	4-5
Safety precautions	6
First use	9
Coffee preparation	10
Hot water preparation	11
Alarms	12-13
Daily cleaning	14

**User menu mode:**

Water hardness setting	15
Descaling	16-17
Descaling alarm ON/OFF	18
Energy saving concept	19
New filter	20
Filter OFF	21
Programming the cup volume	22
Programming the coffee temperature	23
Reset to factory settings	24
Emptying the system	24

**Additional information:**

Troubleshooting	25-26
Specifications	26
Accessories	27
Recycling	27
Machine connectivity	28
EC declaration of conformity	28
Ecolaboration	29
Contact Nespresso	29

**EN**

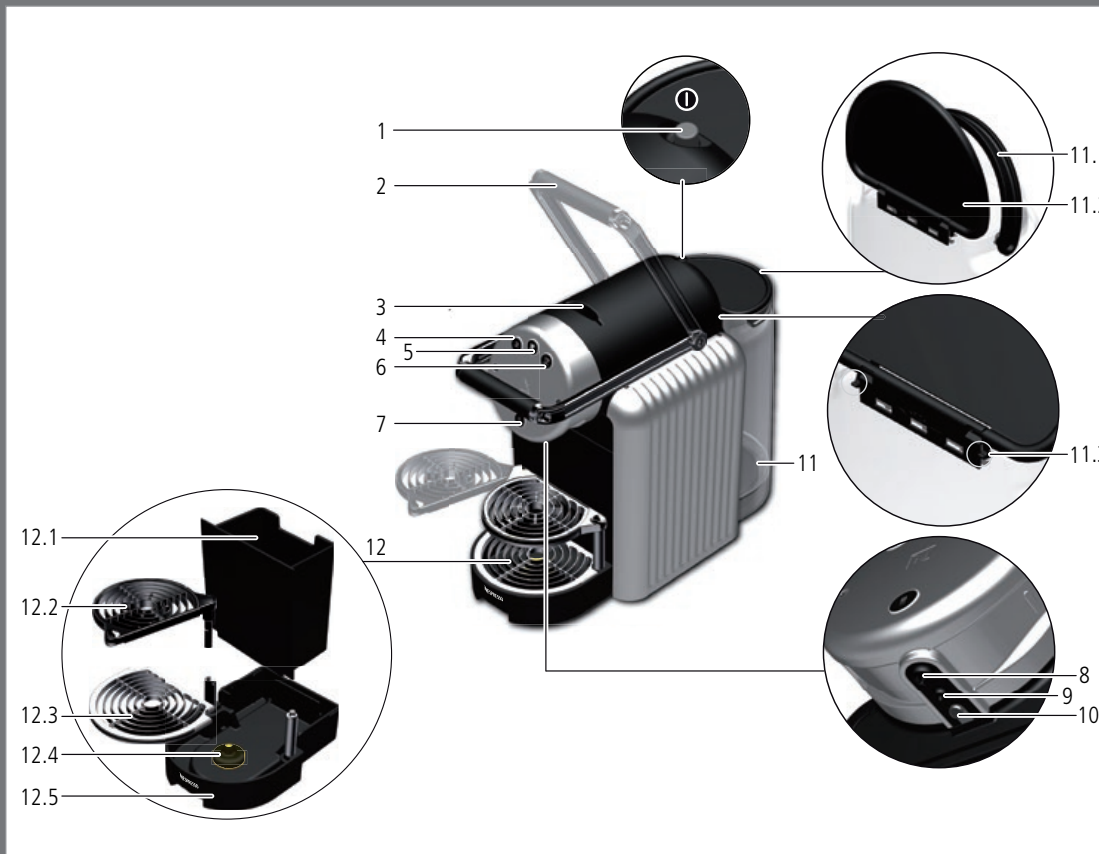
*NESPRESSO*, an exclusive system creating the perfect espresso, time after time. Each parameter has been calculated with great precision to ensure that all the aromas from each Grand Cru can be extracted, to give the coffee body and create an exceptionally thick and smooth crema.

## **EN** Packaging content



### **Packaging content**

- 1 Machine
- 2 User Manual
- 3 Hardness test strip
- 4 Power cord



**EN**

- 1 ① ON/OFF button
- 2 Lever
- 3 Capsule insertion slot
- 4 Ristretto button  
(factory setting 25 ml.)
- 5 Espresso button  
(factory setting 40 ml.)
- 6 Lungo button  
(factory setting 110 ml.)
- 7 Hot water button  
(factory setting 125 ml.)
- 8 Coffee outlet
- 9 Hot water outlet
- 10 Cup lighting function
- 11 Water tank (for 2 l.)
  - 11.1 Handle
  - 11.2 Lid
  - 11.3 Fixing hooks on lid
- 12 Maintenance module
  - 12.1 Capsule container for 25 used capsules
  - 12.2 Espresso cup support + Rotating drip grid
  - 12.3 Recipe Glass or Mug support + Fixed drip grid
  - 12.4 Floater
  - 12.5 Drip tray

**Read these instructions carefully before using your new coffee machine for the first time. Improper use of the machine releases Nespresso from any liability.**

■ Caution – When you see this sign, please refer to the safety precautions to avoid possible harm and damage.

■ Information – When you see this sign, please take note of the advice for the correct and safe usage of your coffee machine.

- 1 In case of an emergency: immediately remove the plug from the power socket.
- 2 Only plug the appliance into suitable and easily accessible, earthed main connections.
- 3 The use of incorrect connection voids the warranty.

- 4 This appliance can be used by children aged from 8 years and above if they have been given supervision or instruction concerning use of the appliance in a safe way and if they understand the hazards involved. Cleaning and user maintenance shall not be made by children unless they are older than 8 and supervised. Keep the appliance and its cord out of reach of children aged less than 8 years.
- 5 Appliances can be used by persons with reduced physical, sensory or mental capabilities or lack of experience and knowledge if they have been given supervision or instruction concerning use of the appliance in a safe way and understand the hazards involved. Children shall not play with the appliance.
- 6 Check that the voltage quoted on the rating plate is the same as your mains voltage.
- 7 Use only the specific power cord delivered with the machine, mount it in the bottom of the machine as mentioned in the user manual.
- 8 Your machine is made for indoor use only.
- 9 Do not put the fingers under the coffee or hot water outlets, risk of scalding.
- 10 Always fill the water tank with potable water.
- 11 Empty water tank if coffee machine will not be used for an extended time (holidays etc.).
- 12 Replace water in water tank before coffee machine is put into operation after a weekend or a similar period of time.
- 13 Always close the lever completely and never lift it

- during operation. Scalding may occur. Do not put fingers into the capsule insertion slot or the capsule ejection. Danger of injury!
- 14 If a capsule is blocked into the capsule compartment, turn the machine off and unplug it before any operation. Call *Nespresso* authorized after-sales centre.
  - 15 To avoid hazardous damage, never place the appliance on or beside hot surfaces such as heating plate, radiators, stoves, ovens, gas burners, open flames, or similar. Always place it on a flat, stable and even surface, away from water splashes. The surface must be resistant to heat and fluids, like water, coffee, descaler, or similar.
  - 16 Place this product 20cm from the body of the user or nearby person.
  - 17 Remove the plug from the mains socket if you will not be using the machine for an extended time (holidays). Before cleaning and servicing, remove the plug from the mains socket and let the machine cool down. Do not unplug by pulling the power cord.
  - 18 Do not use the machine if it is not operating perfectly or if it shows any sign of damage. In case of any malfunction or damage, call your nearest *Nespresso* representative.
  - 19 All operations other than normal use, cleaning, and servicing must be performed by the *Nespresso* authorized after-sales centre. The warranty does not apply to any defect resulting from accident, negligence, misuse, failure to follow the product instructions, calcium deposits, improper or inadequate maintenance, normal wear and tear, use on current or voltage other than as marked on the product, product alteration, fire, lightening, flood or external causes.
  - 20 Never immerse the machine, power cord or plug in water or any other liquid.
  - 21 Keep the power cord out of reach of children.
  - 22 Never leave the power cord near or in contact with hot parts of the machine, a source of heat, or a sharp edge.
  - 23 When the power cord or plug is damaged, you must not use the machine. In order to avoid danger, call your *Nespresso* representative to have the defective part repaired or replaced.
  - 24 For your own safety, you should use only parts and accessories from *Nespresso* that are made for your machine.
  - 25 Never use the machine without the drip tray or the drip grid.



26 All *Nespresso* machines must pass stringent controls. Reliability tests under practical conditions are performed randomly on selected units. This can show traces of any previous use.

27 The manufacturer cannot be held liable for any damage caused by not intended use or inappropriate handling of the machine.

28 Descaling:

- The descaling solution can be harmful. Avoid contact with eyes, skin and surfaces. We recommend the *Nespresso* descaling kit available from *Nespresso* as it is specifically adapted to your machine. Do not use other products (such as vinegar) that would affect the taste of the coffee. For any additional questions you may have regarding descaling, please contact your *Nespresso*

representative.

- Preparation: please read carefully the safety instructions on the descaling agent packaging and follow the instructions from the descaling manual.
- Descaling: do not use the machine for any other purpose during the descaling process.
- Rinse: rinse the water tank and clean the machine to avoid any residual descaling solution.

### Household use

This appliance is intended to be used in household and similar applications such as:

- staff kitchen areas in shops, offices and other working environments;
- farm houses;
- by clients in hotels, motels and other residential type environments;
- bed and breakfast type environments.

### Office use

Zenius is an Espresso coffee maker (or machine).

This appliance is intended to be used by expert or trained users in shops, in light industry and on farms, or for office use by lay persons.

### Installation instruction

- Machine must be disconnected during installation.
- minimal space (height) for correct use of the machine: 55 cm.

- in a horizontal position


This machine works only with *Nespresso*® Pro capsules, available through *Nespresso* and its authorised distributors.

### SAVE THESE INSTRUCTIONS

Pass them on to any subsequent user.

This instruction manual is also available as a PDF at [www.nespresso.com/pro](http://www.nespresso.com/pro).

**EN** First use (or after long period of non-use)

 First read the safety precautions (page 6) to avoid risks of fatal electrical shock and fire.



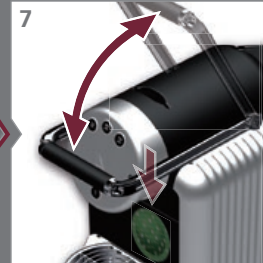
## EN Coffee preparation

⚠ Do not put fingers into the capsule insertion slot or the capsule ejection.

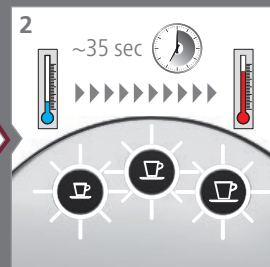
\* This functionality will be activated at a later stage.



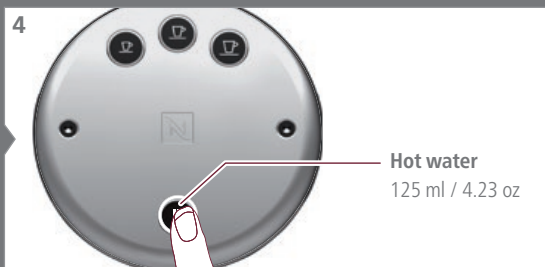
5 Preparation will stop automatically. To stop the coffee flow, press any button.



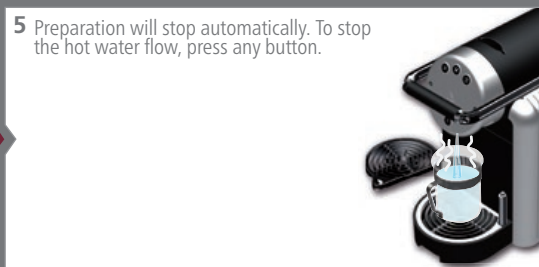
EN Hot water preparation



**i** Eject coffee capsule before hot water preparation.  
Ejectez la capsule avant la préparation d'eau chaude.



Hot water  
125 ml / 4.23 oz



## EN Alarms

Water tank empty or missing. Machine not working.



Fill water tank.



Descaling needed



Descalcify machine (see page 16-17). The alarm is first displayed when the machine is switched on and repeated every hour.

Change filter



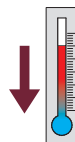
Change filter (see page 20). The alarm is first displayed when the machine is switched on and repeated every hour.

Overheat. Machine not working.



Machine has to cool down for approx. 20 minutes.

~20 min



Temporary defect. Machine not working.



1

OFF/ON



2 If alarm is repeated after switch ON/OFF several times: Descale machine (see page 16-17).

3 If alarm is repeated after descaling: Call Nespresso authorized after sales centre.

Fatal defect. Machine not working.



Machine defect. Call Nespresso authorized after sales centre.



**EN** Daily cleaning

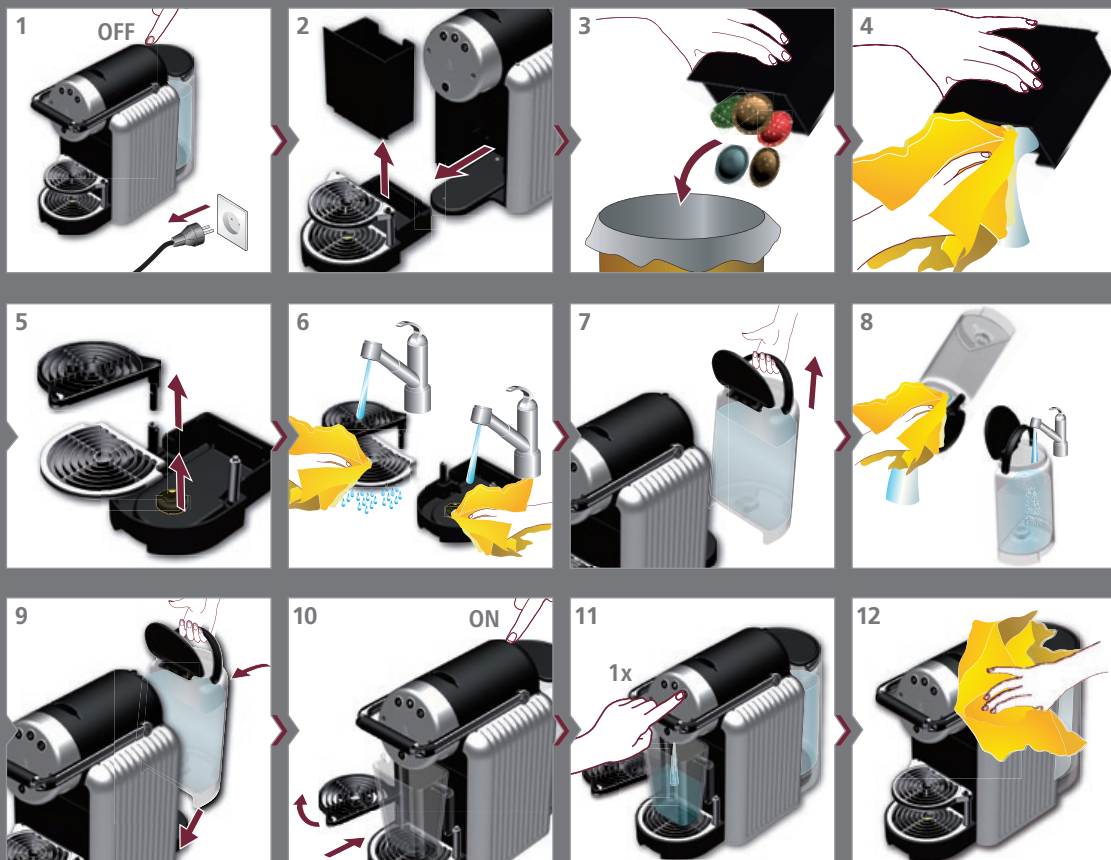
**I**

Do not use any strong cleaning agent or solvent cleaner. Do not put the appliance or part of it in a dishwasher. Never immerse the appliance or part of it in water.

N'utilisez pas d'agent ou de solvant nettoyant trop fort.

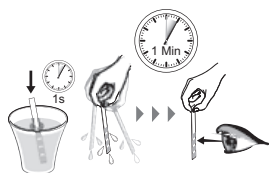
Ne mettez pas l'appareil ou une partie de ce dernier dans le lave-vaisselle.

Ne jamais plonger l'appareil ou une partie de ce dernier dans l'eau.



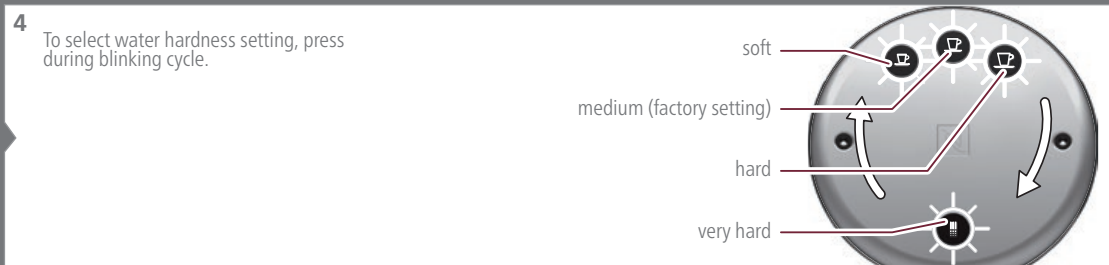


## EN Water hardness setting



⚠ Dip test strip briefly (1 sec) into water. Shake off excess and wait 1 min. Reset water hardness in your machine accordingly.

Plongez brièvement (1 sec) la bande de test dans l'eau. Enlevez l'excédent et attendez une minute. Réinitialisez la dureté de l'eau de votre machine en fonction du résultat.



Water hardness	Strip colour code	dH	fh
soft / Douce / μαλακό		< 7	< 13
medium / Medium / μεσαίο		7-14	13-25
hard / dure / σκληρό		14-21	25-38
very hard / Très dure / πολύ σκληρό		> 21	> 38

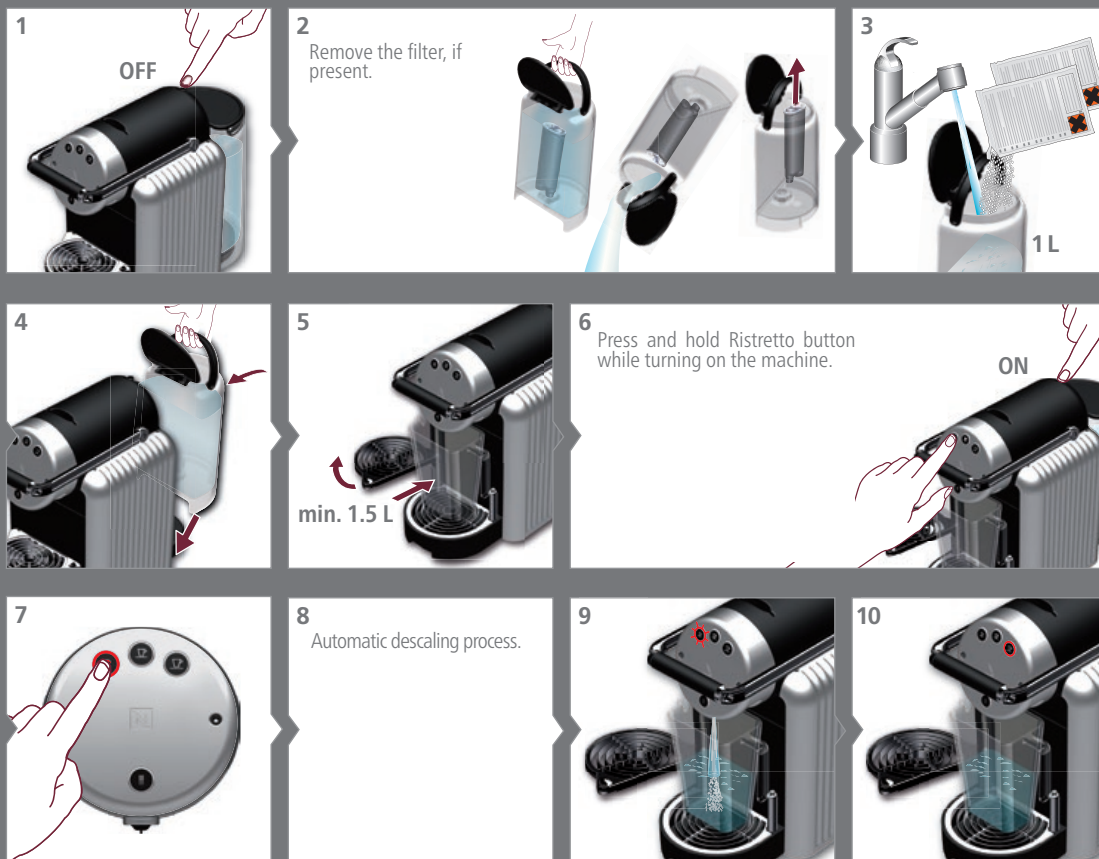


## EN Descaling

**i** Duration approx. 15 minutes.

Durée approximative : 15 min  
Διάρκεια περίπου 15 λεπτά.

**⚠** Read the safety precautions on the descaling package.



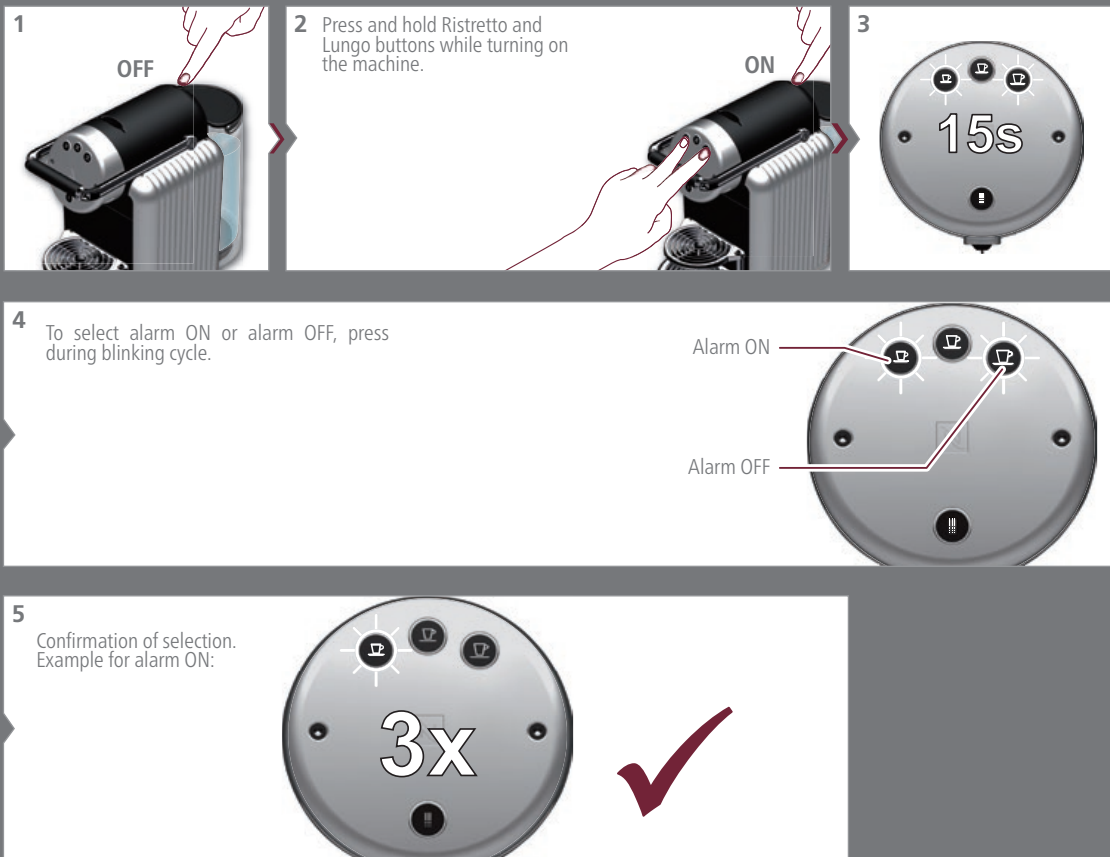


**EN** Descaling alarm ON/OFF



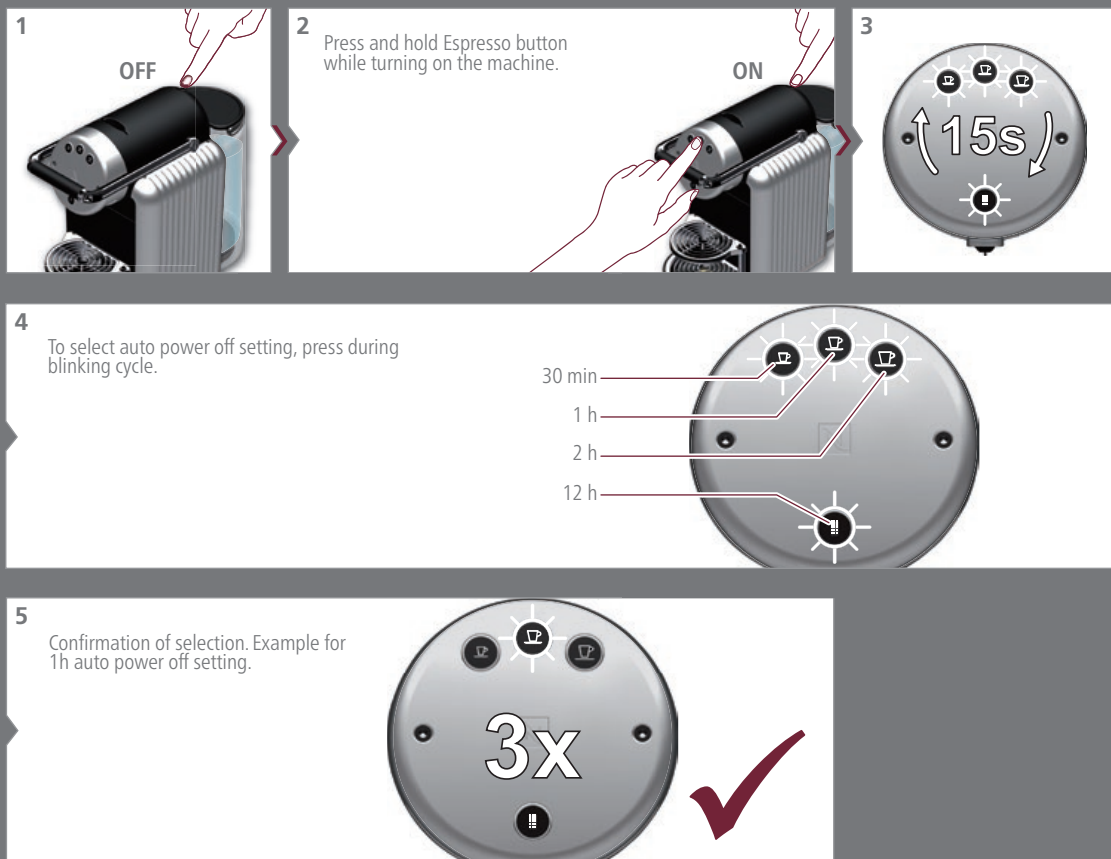
**Factory setting:**

- Alarm ON



**EN** Energy saving concept

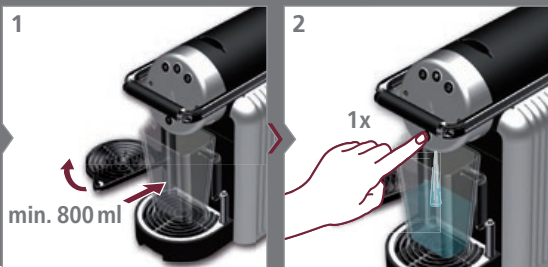
**i**  
**Factory setting:**  
• 30 minutes



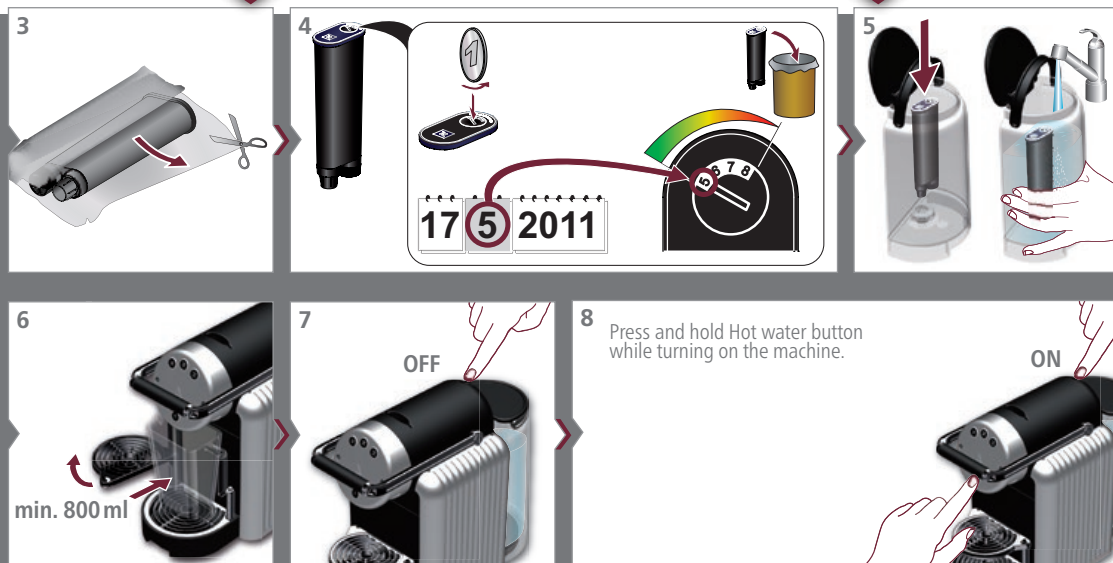
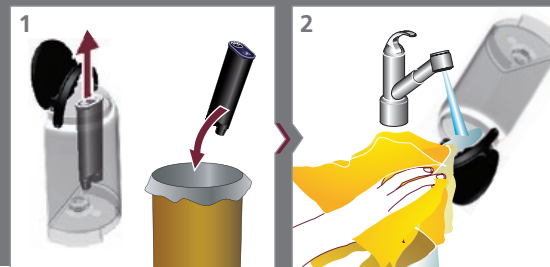
EN New filter

**i** Life-time of the Nespresso "Aqua Clarity" filter is 4 months.

## First filter installation

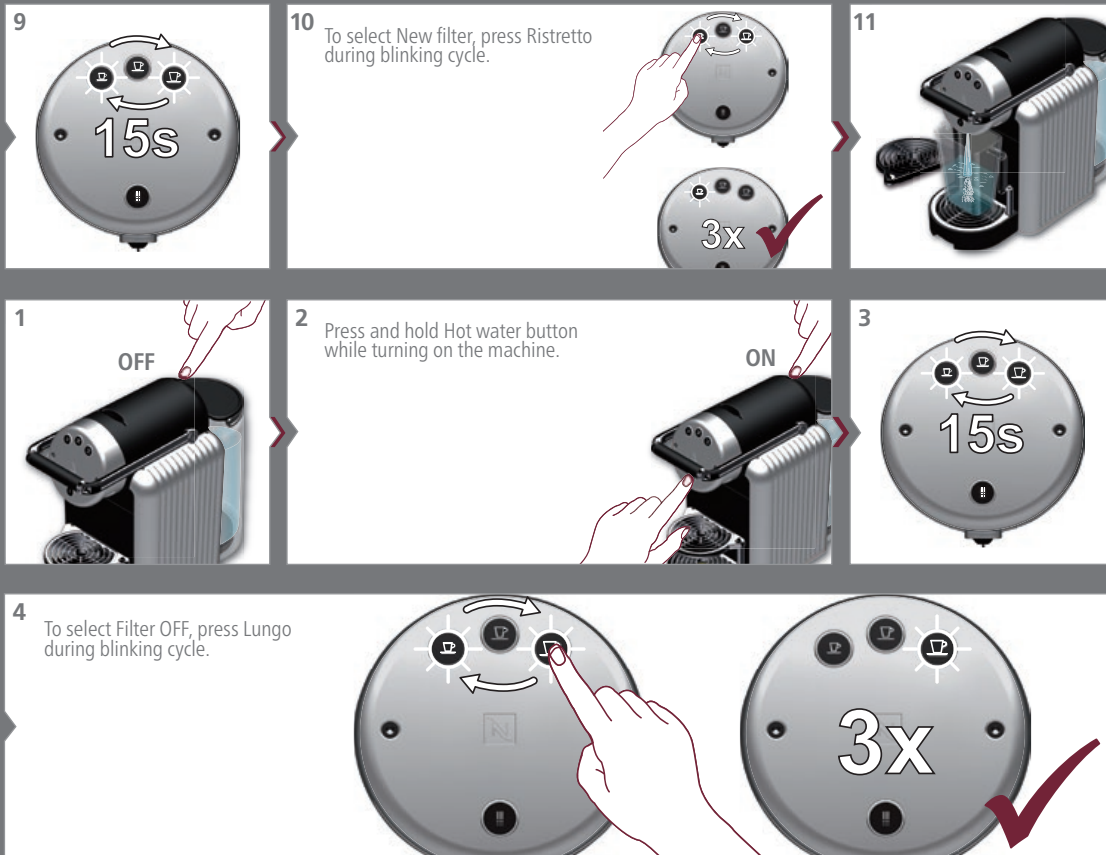


## Filter change



## EN Filter OFF

**i** **Factory setting:**  
• Filter OFF



**EN** Programming the cup volume



**Factory setting:**

- Ristretto button: volume 25 ml
- Espresso button: volume 40 ml
- Lungo button: volume 110 ml
- Hot water button: volume 125 ml

1

OFF

2

Press and hold Lungo and Hot water buttons while turning on the machine.

ON

3

15s

4

5

Press and hold cup button during blinking cycle. Release once desired volume is served.

6

To adjust hot water cup volume no capsule is necessary.

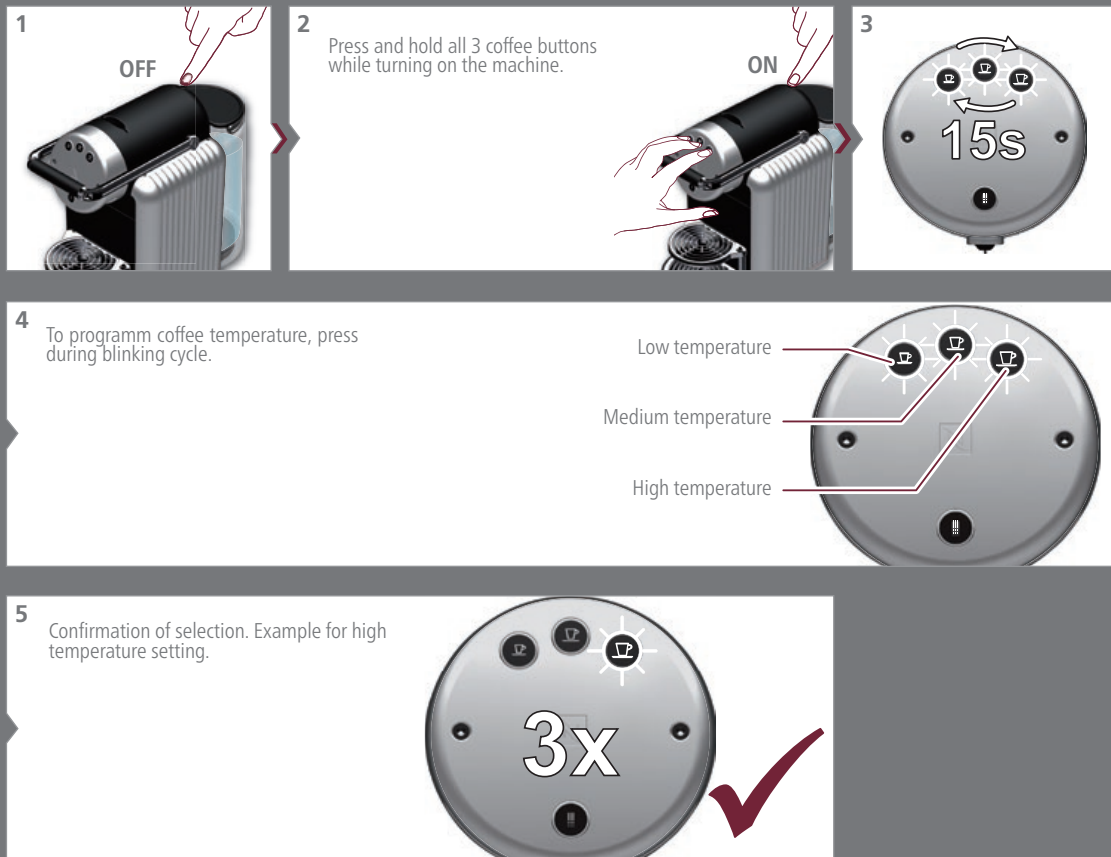
7

Confirmation of selection. Example for Espresso new cup volume setting.

3x

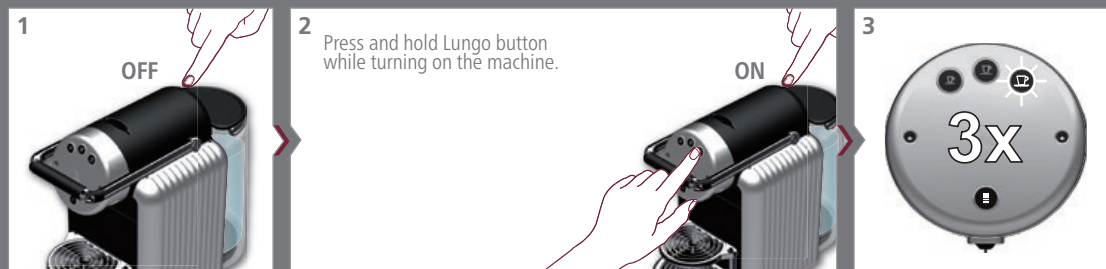
**EN** Programming the coffee temperature

**i**  
**Factory setting:**  
• Medium temperature

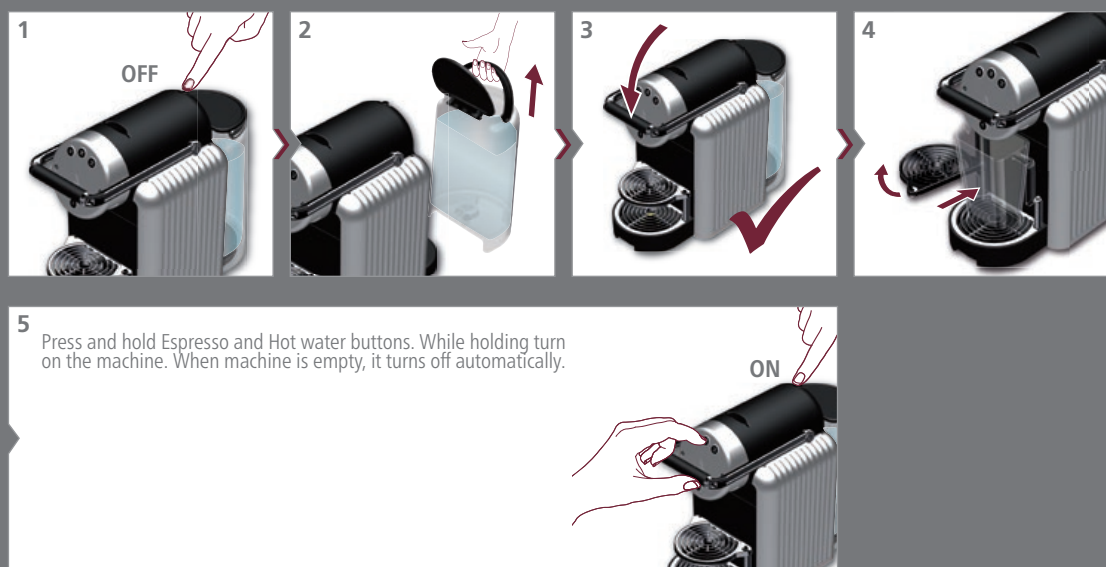




**EN** Reset to factory settings



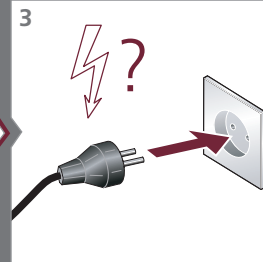
**EN** Emptying the system



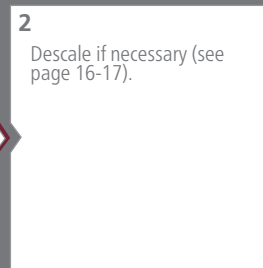
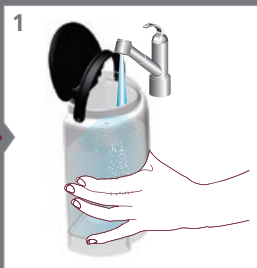
**i**  
Before a period of non use, for frost protection or before a repair

**EN** Troubleshooting

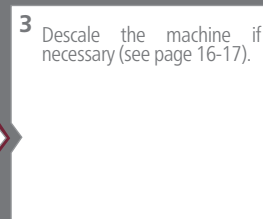
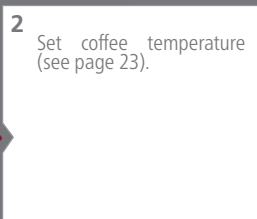
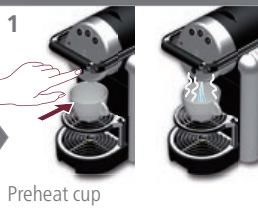
No light



No coffee, no water



Coffee is not hot enough



## EN Troubleshooting

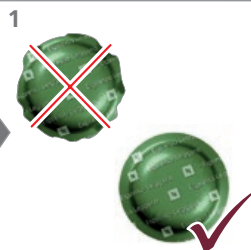
The lever cannot be closed completely.



Empty capsule container. Check that no capsule is blocked inside.



No coffee, water just comes out (despite inserted capsule).



2  
Machine defect. Call the Nespresso authorized after sales center.



## EN Specifications

**BH CY JO KW OM QA SA ZA AE**

220-240 V, 50-60 Hz, 1560-1860 W

**ZA**

220-240 V, 50-60 Hz, 1560-1860 W

**P**

< 19 bar

**kg**

7 kg



2 L



A = 19.0 cm  
B = 31.3 cm  
C = 39.9 cm



D = 26.4 cm  
E = 45.7 cm  
F = 41.4 cm

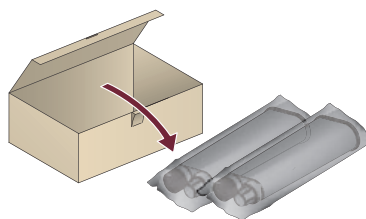
## EN Accessories

### Descaling Kit



#5036/ZN

### NESPRESSO B2B "Aqua Clarity" Filter Kit



Filter usage is recommended for all water hardness, except for soft water hardness (see page 15) with consumptions less than 300 preparations/month.

#5045/2

## EN Recycling

### Disposal and environmental concerns:

Your appliance contains valuable materials that can be recovered or recycled. Separation of the remaining waste materials into different types facilitates the recycling of valuable raw material. Leave the appliance at a collection point. You can obtain information on disposal from your local authorities.

## **EN** Machine connectivity

This coffee machine is equipped with M2M (Machine to Machine) technology which may be activated in due time with your agreement.

Thanks to a SIM card already integrated in the machine, such network connections will offer new services (subject to further terms and conditions) to its customers and improve the after sales process by automatically communicating machine troubleshooting / diagnostics to our Customer Relationship Centre (depending on country requirements and specificities).

## **EN** EC declaration of conformity

### **Espresso Coffee machine:**

This product complies with the Machinery Directive 2006/42/EC and the EMC Directive 2004/108/EC

### **Espresso Coffee Maker:**

This product complies with the Low Voltage Directive 2006/95/EC, the EMC Directive 2004/108/EC and the EuP Directive 2009/125/EC

## EN Ecolaboration

ECOLABORATION:  
[ecolaboration.com](http://ecolaboration.com)

We have committed to buy coffee of the very highest quality grown in a way that is respectful of the environment and farming communities. Since 2003 we have been working together with the Rainforest Alliance developing our *Nespresso* AAA Sustainable Quality™ Coffee Program, and now we are committed to sourcing 80% of our coffee from the Program, including Rainforest Alliance certification, by 2013.

*Nespresso* is committed to designing and making machines that are innovative, high-performing and user friendly. Now we are engineering environmental benefits into the design of our new and future machine ranges.

## EN Contact NESPRESSO

For any additional information, in case of problems or simply to seek advice, call your *Nespresso* representative.

Contact details of your *Nespresso* representative can be found at [nespresso.com/pro](http://nespresso.com/pro)