



*** whip-it!**



PRODUCT CATALOG



We bring your culinary imagination to life!

Since **Whip-It!** cream dispensers and cream chargers were created, **Whip-It!** brand has become the preferred choice for master chefs, culinary professionals and home cook enthusiasts. Manufactured to the highest-quality standards, **Whip-It!** brand products deliver superior value and performance and meet ISO 9001, ISO 9002 and TUV certification requirements.

Whether you are an inspired chef experimenting with cutting-edge molecular gastronomy, a creative mixologist crafting signature infused spirits, or a barista topping off beverages with whipped cream, the **Whip-It!** brand continues to deliver the innovation, versatility and reliability you have come to expect from a worldwide, leading brand.



CONTENTS

CHARGERS

Dispenser (N ₂ O)	4
Soda Siphon (CO ₂).....	10
Coffee (Nitrogen)	12
Beer (CO ₂)	14

DISPENSERS

Stainless Steel	16
Aluminum.....	22

SODA SIPHONS

Stainless Steel	30
Rubber Coated	32

TORCHES

Rotating Angles	34
Blow Torches	38
Handheld	42

BUTANE

Stove Fuel	54
Butane	54

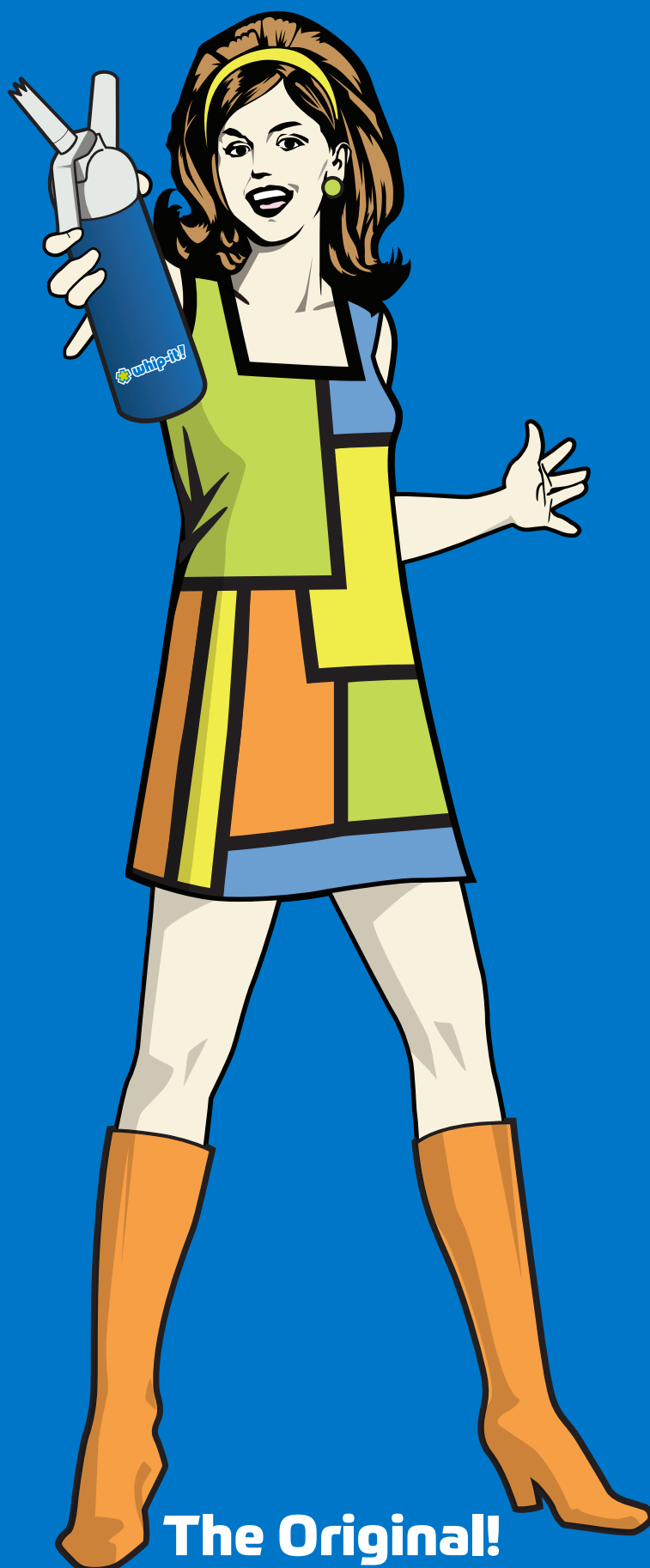
STOVES

GIFT SETS

ACCESSORIES

APPAREL

MERCHANDISE



The Original!

Elite

ALUMINUM CREAM CHARGERS

Our newest, most innovative N₂O cream chargers are lighter than ever!

This next generation cream charger contains more gas per unit than the industry standard, propelling approximately 20% more volume of whipped content. Made with 100% premium aluminum, the **Whip-It! Elite** is much lighter, produces longer-lasting freshness and is more environmentally friendly than its carbon-steel counterpart. Each Whip-It! Elite cream charger is meticulously inspected and certified to meet the highest-quality standards, ensuring the best taste for your culinary and bartending needs.



FEATURED IN:
Catering & Events
Foodservice
Recipe Corner

Features

Approximately 20% more volume per charger
reduces the need to reload and optimizes efficiency
and profitability

NEW aluminum design made from the highest-grade,
100% premium aluminum

Improved aeration creates products lighter in fat
with less calories

Cleaner manufacturing process creates a more
environmentally-friendly product

USA-Made gas with imported hardware

Compatible with all standard whipped cream dispensers

A hand is shown using a silver and blue whipped cream dispenser to create a large, fluffy swirl of whipped cream on a wooden surface. To the left, a balance scale is shown with a small swirl of whipped cream on one side and a larger swirl on the other, illustrating the 'lighter than ever' claim. In the background, two boxes of Whip-It! Elite Aluminum Cream Chargers are visible, one labeled '24 PACK' and the other '50 PACK'. Several individual cream chargers are scattered on the wooden surface in the foreground.

**LIGHTER
THAN
EVER!**

Others simply
fall flat.

Whip-It! Elite
ALUMINUM CREAM CHARGERS

Whip-It! Elite
ALUMINUM CREAM CHARGERS



10 Pack

1.5 lbs | w 3.7 in x h 2.7 in x d 1.5 in

Product UPC
8 58424 00202 1

Item Code
CC-Elite-10A

Case of 360

16.2 lbs | w 11.7 in x h 11.1 in x d 7.8 in

Case UPC
8 50011 67519 9

Item Code
CC-Elite-3610A

Case Count
36



24 Pack

1.5 lbs | w 6 in x h 2.7 in x d 2.5 in

Product UPC
8 58424 00200 7

Item Code
CC-Elite-24A

Case of 600

27 lbs | w 14 in x h 6.6 in x d 12 in

Case UPC
1 085842 400200 4

Item Code
CC-Elite-2524A

Case Count
25



50 Pack

3.3 lbs | w 7.5 in x h 3.8 in x d 2.7 in

Product UPC
8 58424 00201 4

Item Code
CC-Elite-50A

Case of 600

27 lbs | w 16 in x h 16 in x d 12 in

Case UPC
1 085842 400201 1

Item Code
CC-Elite-1250A

Case Count
12



100 Pack

6.5 lbs | w 8 in x h 3.7 in x d 5.4 in

Product UPC
8 58424 00203 8

Item Code
CC-Elite-100A

Case of 600

27 lbs | w 15.6 in x h 5.6 in x d 11.6 in

Case UPC
1 085842 400203 5

Item Code
CC-Elite-6100A

Case Count
6



N₂O CREAM CHARGERS

The original and all-time favorite
cream chargers

Whip-It! Cream Chargers are manufactured to meet the highest, most stringent international standards for consistent quality, safety, and performance. Each one is meticulously cleaned, filled, electronically weighed and tested for leaks before final inspection.

Whip-It! cream chargers bring you uncompromising quality and flavor the world has come to know and love. Perfect for topping off distinctive beverages or decadent desserts. Use Whip-It! cream chargers to infuse spirits and enticing cocktails or create luscious foams and sauces on any culinary concoctions. At Whip-It!, we bring your culinary imagination to life!

Features

Premium-quality chargers filled with the purest, food-grade nitrous oxide gas

Made from the highest-grade, 100% recyclable steel

Compatible with all standard whipped cream dispensers





5 Pack

0.3 lbs | w 3.5 in x h 2.5 in x d 0.5 in

Product UPC 8 50011 67511 3
Item Code CC-Whip-5

Case of 360

24.2 lbs | w 9.5 in x h 8 in x d 8.75 in

Case UPC 8 50011 67518 2
Item Code CC-Whip-7205

Case Count
72



10 Pack

0.7 lbs | w 3.6 in x h 2.7 in x d 1.5 in

Product UPC 8 50011 67512 0
Item Code CC-Whip-10

Case of 360

25 lbs | w 9.4 in x h 9 in x d 7.7 in

Case UPC 8 50011 67520 5
Item Code CC-Whip-3610

Case Count
36



24 Pack

1.6 lbs | w 5.7 in x h 2.7 in x d 2.2 in

Product UPC 8 50011 67513 7
Item Code CC-Whip-24

Case of 600

40 lbs | w 14.1 in x h 6.6 in x d 11.7 in

Case UPC 8 50011 67521 2
Item Code CC-Whip-2524

Case Count
25



50 Pack

3.3 lbs | w 7.1 in x h 3.7 in x d 2.6 in

Product UPC 8 50011 67514 4
Item Code CC-Whip-50

Case of 600

40 lbs | w 15 in x h 8.9 in x d 8 in

Case UPC 8 50011 67522 9
Item Code CC-Whip-1250

Case Count
12



100 Pack

6.7 lbs | w 7.5 in x h 3.6 in x d 5.4 in

Product UPC 8 50011 67515 1
Item Code CC-Whip-100

Case of 600

40 lbs | w 15.2 in x h 6.2 in x d 11.7 in

Case UPC 8 50011 67523 6
Item Code CC-Whip-6100

Case Count
6



24 Pack [Pink]

1.6 lbs | w 5.7 in x h 2.7 in x d 2.2 in

Product UPC 8 50011 67516 8
Item Code CC-Whip-24PL

Case of 600

40 lbs | w 14.1 in x h 6.6 in x d 11.7 in

Case UPC 8 50011 67524 3
Item Code CC-Whip-2524PL

Case Count
25



50 Pack [Pink]

3.3 lbs | w 7.1 in x h 3.7 in x d 2.6 in

Product UPC 8 50011 67525 0
Item Code CC-Whip-50PL

Case of 600

40 lbs | w 15 in x h 8.9 in x d 8 in

Case UPC 8 50011 67517 5
Item Code CC-Whip-1250PL

Case Count
12



100 Pack [Pink]

6.7 lbs | w 7.5 in x h 3.6 in x d 5.4 in

Product UPC 8 10100 48012 7
Item Code CC-Whip-100PL

Case of 600

40 lbs | w 15.2 in x h 6.2 in x d 11.7 in

Case UPC 8 10100 18013 4
Item Code CC-Whip-6100PL

Case Count
6

SELECT N₂O CREAM CHARGERS

Quality in minutes!

Create fresh whipped cream, delicious confections and savory dishes in minutes with **Whip-It! Select Chargers**. Our chargers are made with high-quality products, contain approximately 8 grams of food-grade nitrous oxide and are compatible with all standard whipped cream dispensers.

Features

Filled with quality, food-grade nitrous oxide gas

Each charger contains approximately 8 grams of nitrous oxide

Produced using the finest recyclable steel available

Compatible with all standard whipped cream dispensers





SELECT CREAM CHARGERS | N₂O

24 Pack

1.6 lbs | w 5.7 in x h 2.7 in x d 2.2 in

Product UPC	Item Code
8 50028 97221 2	CC-Sel-24T

Case of 600

40 lbs | w 14.1 in x h 6.6 in x d 11.7 in

Case UPC	Item Code
8 50028 97226 7	CC-Sel-2524T

Case Count
25

50 Pack

3.3 lbs | w 7.1 in x h 3.7 in x d 2.6 in

Product UPC	Item Code
8 50828 97222 9	CC-Sel-50T

Case of 600

40 lbs | w 15 in x h 8.9 in x d 8 in

Case UPC	Item Code
8 50028 97227 4	CC-Sel-1250T

Case Count
12

SODA CHARGERS

CO₂

Refreshingly crisp, sparkling taste with every sip

There is nothing that compares to a perfect soda, and the **Whip-It! CO₂ Soda Chargers** deliver the best taste in the business. Whip-It! CO₂ chargers are preferred by soda-makers, professional chefs, home users and experts worldwide. Use one of our quality Whip-It! soda siphons, and you'll get the best flavor every time.

Features

Highest quality, carbon dioxide gas

Made from the finest, recyclable steel available

Food-grade compliant

Non-aerosol, non-refillable

Compatible with all standard soda siphons





SODA CHARGERS | CO₂

10 Pack

0.7 lbs | w 3.6 in x h 2.6 in x d 1.5 in

Product UPC
8 58424 00257 1

Item Code
CS-Whip-10L

Case of 360

24.2 lbs | w 9.5 in x h 8.8 in x d 7.8 in

Case UPC
8 58424 00258 8

Item Code
CS-Whip-3610L

Case Count
36

NITRO CHARGERS

N₂

Take your coffee to a new level!

Create premium quality nitro cold brew coffee with **Whip-It! Nitro Chargers**. Indulge in the rich, smooth and creamy sensation of cold brew coffee and other exceptional nitro-infused beverages. It's the perfect choice for professional application and home use.

Features

Enjoy creamy, smooth nitro-infused beverages anywhere

Filled with the purest, food-grade nitrogen gas

Each charger contains approximately 2.2 grams of nitrogen

Made from the highest grade, 100% recyclable steel

Compatible with all standard cream dispensers





FEATURED IN:


NITRO CHARGERS | NITROGEN

10 Pack

0.7 lbs | w 3.6 in x h 2.6 in x d 1.5 in

Product UPC
 8 50011 67505 2

Item Code
 CF-Whip-10T

Case of 360

24.2 lbs | w 9.5 in x h 8.8 in x d 7.8 in

Case UPC
 8 50011 67506 9

Item Code
 CF-Whip-3610T

Case Count
 36

BEER CHARGERS

CO₂

Fresh Beer, Your Way

Whether you are a beer enthusiast or home brew hobbyist, Whip-It! Brand CO₂ delivers the purest CO₂ gas to ensure the best carbonation.

Features

Create crisp, carbonated beer anytime, anywhere

Highest quality, food-grade CO₂

Made with recyclable steel

Compatible with standard, threaded growlers or taps





BEER CHARGERS | CO₂

10 Pack | 8 Gram | Non-Threaded

0.7 lbs | w 3.6 in x h 2.6 in x d 1.5 in

Product UPC
8 58424 00211 3

Item Code
CB-8N-10L

Case of 360

24.55 lbs | w 9.75 in x h 8 in x d 9 in

Case UPC
8 58424 00248 9

Item Code
CB-8N-3610L

Case Count
36

Case of 600

41.05 lbs | w 14.25 in x h 12.25 in x d 6.75 in

Case UPC
8 58424 00249 6

Item Code
CB-8N-6010L

Case Count
60

10 Pack | 16 Gram | Threaded

1 lbs | w 4.4 in x h 3.6 in x d 1.7 in

Product UPC
8 58424 00208 3

Item Code
CB-16TH-10L

Case of 300

43.45 lbs | w 14 in x h 12 in x d 7 in

Case UPC
8 50028 97290 8

Item Code
CB-16TH-3010L

Case Count
30

Case of 600

40.5 lbs | w 13.9 in x h 11.75 in x d 6.5 in

Case UPC
8 50028 97291 5

Item Code
CB-16TH-6010L

Case Count
60

10 Pack | 16 Gram | Non-Threaded

1 lbs | w 4.4 in x h 3.6 in x d 1.7 in

Product UPC
8 58424 00209 0

Item Code
CB-16N-10L

Case of 300

42.85 lbs | w 15.5 in x h 9.5 in x d 8.5 in

Case UPC
8 50028 97292 2

Item Code
CB-16N-3010L

Case Count
30

Case of 600

40.5 lbs | w 13.9 in x h 11.75 in x d 6.5 in

Case UPC
8 50028 97293 9

Item Code
CB-16N-6010L

Case Count
60

STAINLESS STEEL DISPENSERS

Reliability & beauty met by versatility

The **Whip-It! Specialist** dispenser is a professional tool, built to withstand daily use in a commercial environment. The highest grade 18/8 stainless steel bottle coupled with quality, interior mechanisms provide optimal performance for hot and cold applications. Commercial dishwasher safe, it's also available in a variety of sizes to suit any needs and is NSF certified for commercial use. Popular for its versatility and durability, the Specialist dispenser is a favorite among culinary and beverage professionals or enthusiasts.

The stylish **Whip-It! Stellar** is constructed of durable, high-grade stainless steel, finished with copper and built to withstand extended daily use in a commercial environment. Favored by culinary professionals for its versatility and reliability, this heavy-duty dispenser is perfect for a variety of hot and cold applications. Produce luscious creams, mousses and sauces or experiment with foams and other molecular gastronomy-inspired creations. Rapidly infuse oils, vinegars and liquor in minutes rather than weeks.

Features

NSF certified for commercial use

Made from the highest grade, 18/8 brushed stainless steel

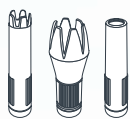
Rubber-coated seal and charger holder for extra grip

Perfect for hot and cold applications

Commercial dishwasher safe (Specialist only)

Limited Lifetime Warranty

Includes



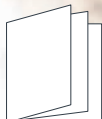
3 Tips Set



Cleaning Brush



Charger Holder



Recipe Book



FEATURED IN:

Catering & **E**vents **LIQUOR**.COM
Foodservice & Recipe Corner



1/4 L SPECIALIST

3 lbs | w 4 in x h 11 in x d 4 in

Product UPC 8 50028 97223 6
Item Code DC-Spec-Q01S

Case UPC 8 50036 04552 6
Case Count 6



1/2 L SPECIALIST

4 lbs | w 4 in x h 11.5 in x d 4 in

Product UPC 8 50028 97224 3
Item Code DC-Spec-H01S

Case UPC 8 50036 04553 3
Case Count 6



1 L SPECIALIST

5 lbs | w 4 in x h 13 in x d 4 in

Product UPC 8 50028 97225 0
Item Code DC-Spec-L01S

Case UPC 8 50036 04554 0
Case Count 6



1/4 L STELLAR

3 lbs | w 4 in x h 11 in x d 4 in

Product UPC 8 58424 00228 1
Item Code DC-Stel-Q11S

Case UPC 8 58424 00229 8
Case Count 6



1/2 L STELLAR

4 lbs | w 4 in x h 11.5 in x d 4 in

Product UPC 8 58424 00224 3
Item Code DC-Stel-H11S

Case UPC 8 58424 00239 7
Case Count 6



1 L STELLAR

5 lbs | w 4 in x h 13 in x d 4 in

Product UPC 8 58424 00233 5
Item Code DC-Stel-L11S

Case UPC 8 58424 00225 0
Case Count 6



THERMO PRO DISPENSER

Versatile tool for hot & cold applications

The **Whip-It! Thermo Pro** dispenser is a multi-purpose gadget with thermal capabilities to keep food and drinks hot or cold. Create warm soups and sauces and fresh desserts, creams and whipped cream that stays cold longer. The stainless steel, double wall constructed bottle provides optimal thermal performance, insulation and dispenses evenly. It is simple to use and quickly achieves desired results. Perfect for any professional kitchen setting.

Features

Designed for professional and catering kitchens

Double-walled, stainless steel bottle for even dispensing

Rubberized seal for easy grip

NSF certified for commercial use

Excellent hot and cold retention

Commercial dishwasher safe

Limited Lifetime Warranty



Includes



3 Tips Set



Cleaning Brush



Charger Holder



Recipe Book





1/2 L THERMO PRO

2.46 lbs | w 4 in x h 12.25 in x d 4 in

Product UPC 8 50028 97282 3
Item Code DT-Pro-H01S

Case UPC 8 10100 48015 8
Case Count 6



NITRO BREW DISPENSER

Energize with satiny,
smooth nitro-infusion

The **Whip-It! Nitro Brew** is an innovative dispenser that infuses a range of beverages from coffee, tea, soda and cocktails. Its strategic interior mechanisms make it an advanced technological system combined with Whip-It! Nitro Coffee Chargers to instantly infuse perfection into every pour. Create cascading effects for an attractive visual presentation. The stainless steel and dishwasher safe design makes it easy to clean and maintain. Enhance the flavor of any nitro-infused beverage and enjoy the aromatic beauty of fresh, incredibly smooth results.

Features

Designed for the coffee professional and barista

Made from the highest-grade stainless steel

Perfect for cold brew coffee
and nitro-infused beverages

Versatile in any kitchen, home or bar

Commercial dishwasher safe

Limited Lifetime Warranty

N_2
Powered
by
Nitrogen

Includes



Nitro Tip



Cleaning Brush



Charger Holder





1L NITRO BREW

5 lbs | w 3.75 in x h 12.75 in x d 3.75 in

Product UPC	Item Code
8 50028 97280 9	DF-NBrew-L01S

Case UPC	Case Count
8 10100 48014 1	6



ALUMINUM DISPENSERS

Discover the joy of cooking, tasting & adventuring in creative ways

Whip-It! aluminum dispensers are beautiful, user-friendly cream dispensers that boast reliability. Fast and economical, they produce twice the volume of freshly whipped cream. These dispensers are a star at cocktail hour, allowing you to infuse beverages with herbs, fruits, chiles and other ingredients in seconds rather than weeks.

The **Whip-It! Element** is a high-performance, aluminum dispenser and the perfect tool to excel your culinary needs at home or in a commercial kitchen. It is versatile, multi-functional and has a seamless finish giving it the same smooth look from every angle. Its easy-care design makes cleaning a breeze and allows you to spend more time enjoying your creations.

The **Whip-It! Explore** is an all-white, cream dispenser favored in both professional and home kitchens. Save on prep time and make fresh ingredients effortlessly. This handy kitchen tool gives full control over the final texture, flavor and consistency. It also comes with a trio of decorator tips that make it easy to create beautiful desserts and professional garnishes on beverages and entrées.

Features

High-quality aluminum ensures durability

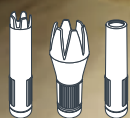
Versatile kitchen gadget

Multi-purpose with endless possibilities

Include decorator tips, tip cleaning brush, charger holder, instructions & recipes

Two-Year Warranty

Includes



3 Tips Set



Cleaning Brush



Charger Holder



Recipe Book





1/3 L ELEMENT | Silver
1.8 lbs | w 4 in x h 11 in x d 4 in

Product UPC
8 50028 97286 1

Case UPC
8 50028 97294 6

Item Code	Case Count
DC-Elem-Q01	6



1/2 L ELEMENT | Silver
2 lbs | w 4 in x h 12.5 in x d 4 in

Product UPC
8 50028 97285 4

Case UPC
8 50028 97295 3

Item Code	Case Count
DC-Elem-H01	6



1 L ELEMENT | Silver
2.7 lbs | w 4 in x h 15 in x d 4 in

Product UPC
8 50028 97284 7

Case UPC
8 50028 97296 0

Item Code	Case Count
DC-Elem-L01	6



1/3 L EXPLORE | White
1.6 lbs | w 4 in x h 11 in x d 4 in

Product UPC
8 50028 97287 8

Case UPC
8 50028 97297 7

Item Code	Case Count
DC-Exp-Q07	6



1/2 L EXPLORE | White
1.7 lbs | w 4 in x h 12.5 in x d 4 in

Product UPC
8 50028 97288 5

Case UPC
8 50028 97298 4

Item Code	Case Count
DC-Exp-H07	6



1 L EXPLORE | White
2.4 lbs | w 4 in x h 15 in x d 4 in

Product UPC
8 50028 97289 2

Case UPC
8 50028 97299 1

Item Code	Case Count
DC-Exp-L07	6



ARMOR DISPENSER

Say hello to style & sophistication

The **Whip It! Armor** is an aluminum dispenser of reliability. Fast and economical, it is a multi-functional must have in the kitchen, well-suited for creating a wide range of aerated specialties from creams, mousses and foams to soups, sauces and dressings. Make light, voluminous toppings for desserts, beverages, appetizers and more.

Features

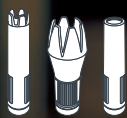
Rubber coating provides extra grip

High-quality aluminum ensures durability

Multi-purpose with endless possibilities

Two-Year Warranty

Includes



3 Tips Set



Cleaning Brush



Charger Holder



Recipe Book

FEATURED IN:

tech
50+





1/3 L ARMOR | Blue
1.8 lbs | w 4 in x h 11 in x d 4 in

Product UPC
8 50036 04522 9

Case UPC
8 50036 04523 6

Item Code **Case Count**
DC-Amr-Q06R 6



1/3 L ARMOR | Red
1.8 lbs | w 4 in x h 11 in x d 4 in

Product UPC
8 50036 04526 7

Case UPC
8 50036 04527 4

Item Code **Case Count**
DC-Amr-Q03R 6



1/3 L ARMOR | Black
1.8 lbs | w 4 in x h 11 in x d 4 in

Product UPC
8 50036 04520 5

Case UPC
8 50036 04520 5

Item Code **Case Count**
DC-Amr-Q05R 6



1/3 L ARMOR | Green
1.8 lbs | w 4 in x h 11 in x d 4 in

Product UPC
8 50036 04524 3

Case UPC
8 50036 04525 0

Item Code **Case Count**
DC-Amr-Q09R 6



1/3 L ARMOR | White
1.8 lbs | w 4 in x h 11 in x d 4 in

Product UPC
8 50036 04546 5

Case UPC
8 50036 04547 2

Item Code **Case Count**
DC-Amr-Q07R 6



1/2 L ARMOR | Blue
2 lbs | w 4 in x h 12.5 in x d 4 in

Product UPC
8 50036 04530 4

Case UPC
8 50036 04531 1

Item Code **Case Count**
DC-Amr-H06R 6



1/2 L ARMOR | Red
2 lbs | w 4 in x h 12.5 in x d 4 in

Product UPC
8 50036 04534 2

Case UPC
8 50036 04535 9

Item Code **Case Count**
DC-Amr-H03R 6



1/2 L ARMOR | Black
2 lbs | w 4 in x h 12.5 in x d 4 in

Product UPC
8 50036 04528 1

Case UPC
8 50036 04529 8

Item Code **Case Count**
DC-Amr-H05R 6



1/2 L ARMOR | Green
2 lbs | w 4 in x h 12.5 in x d 4 in

Product UPC
8 50036 04532 8

Case UPC
8 50036 04544 1

Item Code **Case Count**
DC-Amr-H09R 6



1/2 L ARMOR | White
2 lbs | w 4 in x h 12.5 in x d 4 in

Product UPC
8 50036 04548 9

Case UPC
8 50036 04549 6

Item Code **Case Count**
DC-Amr-H07R 6



1 L ARMOR | Blue
2.7 lbs | w 4 in x h 15 in x d 4 in

Product UPC
8 50036 04537 3

Case UPC
8 50036 04537 3

Item Code **Case Count**
DC-Amr-L06R 6



1 L ARMOR | Red
2.7 lbs | w 4 in x h 15 in x d 4 in

Product UPC
8 50036 04542 7

Case UPC
8 50036 04543 4

Item Code **Case Count**
DC-Amr-L03R 6



1 L ARMOR | Black
2.7 lbs | w 4 in x h 15 in x d 4 in

Product UPC
8 50036 04536 6

Case UPC
8 50036 04538 0

Item Code **Case Count**
DC-Amr-L05R 6



1 L ARMOR | Green
2.7 lbs | w 4 in x h 15 in x d 4 in

Product UPC
8 50036 04540 3

Case UPC
8 50036 04541 0

Item Code **Case Count**
DC-Amr-L09R 6



1 L ARMOR | White
2.7 lbs | w 4 in x h 15 in x d 4 in

Product UPC
8 50036 04550 2

Case UPC
8 50036 04551 9

Item Code **Case Count**
DC-Amr-L09R 6



ACCENT DISPENSER

A brilliant tool for the professional and home chef

The **Whip-It! Accent Dispenser** is beautifully designed with a slant of color and all the right angles of design and functionality. It features a customized head with a rubberized seal and non-slip, rubber-coated body for extra grip and ease of use. The Accent can colorfully identify different ingredients and mixtures for any culinary project or special occasion.

Features

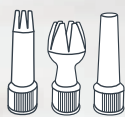
Rubber coating provides extra grip – wet or dry

Available in a variety of colors to accent any kitchen, space or ingredient

Great for home, restaurants, ice cream shops, coffee shops, bars and bakeries

Two-year Warranty

Includes



3 Tips Set



Tip Holder Base



Cleaning Brush



Charger Holder



Recipe Book





1/3 L ACCENT

Green

1.6 lbs | w 4 in x h 11 in x d 4 in

Product UPC
8 50011 67572 4

Case UPC
8 50028 97237 3

Item Code
DC-Acc-Q09R

Case Count
6

1/3 L ACCENT

Blue

1.6 lbs | w 4 in x h 11 in x d 4 in

Product UPC
8 50011 67571 7

Case UPC
8 50028 97236 6

Item Code
DC-Acc-Q06R

Case Count
6

1/3 L ACCENT

Red

1.6 lbs | w 4 in x h 11 in x d 4 in

Product UPC
8 50011 67568 7

Case UPC
8 50028 97234 2

Item Code
DC-Acc-Q03R

Case Count
6

1/3 L ACCENT

Black

1.6 lbs | w 4 in x h 11 in x d 4 in

Product UPC
8 50011 67570 0

Case UPC
8 50028 97235 9

Item Code
DC-Acc-Q05R

Case Count
6



1/2 L ACCENT

Green

1.7 lbs | w 4 in x h 12.5 in x d 4 in

Product UPC
8 50011 67576 2

Case UPC
8 50028 97241 0

Item Code
DC-Acc-H09R

Case Count
6

1/2 L ACCENT

Blue

1.7 lbs | w 4 in x h 12.5 in x d 4 in

Product UPC
8 50011 67575 5

Case UPC
8 50028 97240 3

Item Code
DC-Acc-H06R

Case Count
6

1/2 L ACCENT

Red

1.7 lbs | w 4 in x h 12.5 in x d 4 in

Product UPC
8 50011 67573 1

Case UPC
8 50028 97238 0

Item Code
DC-Acc-H03R

Case Count
6

1/2 L ACCENT

Black

1.7 lbs | w 4 in x h 12.5 in x d 4 in

Product UPC
8 50011 67574 8

Case UPC
8 50028 97239 7

Item Code
DC-Acc-H05R

Case Count
6



1 L ACCENT

Green

2.4 lbs | w 4 in x h 15 in x d 4 in

Product UPC
8 50011 67580 9

Case UPC
8 50028 97245 8

Item Code
DC-Acc-L09R

Case Count
6

1 L ACCENT

Blue

2.4 lbs | w 4 in x h 15 in x d 4 in

Product UPC
8 50011 67579 3

Case UPC
8 50028 97244 1

Item Code
DC-Acc-L06R

Case Count
6

1 L ACCENT

Red

2.4 lbs | w 4 in x h 15 in x d 4 in

Product UPC
8 50011 67577 9

Case UPC
8 50028 97242 7

Item Code
DC-Acc-L03R

Case Count
6

1 L ACCENT

Black

2.4 lbs | w 4 in x h 15 in x d 4 in

Product UPC
8 50011 67578 6

Case UPC
8 50028 97243 4

Item Code
DC-Acc-L05R

Case Count
6



TRANSPARENT HEAD CREAM DISPENSER

Bright, fun and colorful designs
that fit your style

The fun and colorful **Whip-It! Inspire** dispenser comes in two economical sizes and features a rubber-coated body with a plastic, transparent head. The **Whip-It! Sterling** dispenser comes in two sizes and brings style and elegance to your culinary arsenal.

Save on prep time and enjoy infused beverages or fresh ingredients to top off your decadent desserts, delicious drinks, appetizers and more with these great dispensers! Available in a variety of colors to accent any kitchen, they can be used to colorfully identify different ingredients and mixtures for any culinary project or special occasion.

Features

High-impact plastic, transparent head

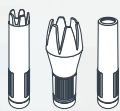
Lightweight and easy to use

Reusable, environmentally-friendly alternative
to disposable cans

User-friendly design includes decorator tips,
cleaning brush, charger holder and recipe booklet

Two-year Warranty

Includes



3 Tips Set



Cleaning Brush



Charger Holder



Recipe Book

FEATURED IN:





1/3 L INSPIRE

Green

16 lbs | w 4 in x h 11 in x d 4 in

Product UPC
8 50028 97248 9

Case UPC
8 50036 04516 8

Item Code **Case Count**
DC-Insp-Q09R 6

1/3 L INSPIRE

Red

16 lbs | w 4 in x h 11 in x d 4 in

Product UPC
8 50028 97249 6

Case UPC
8 50036 04515 1

Item Code **Case Count**
DC-Insp-Q03R 6

1/3 L INSPIRE

Black

16 lbs | w 4 in x h 11 in x d 4 in

Product UPC
8 50028 97250 2

Case UPC
8 50036 04514 4

Item Code **Case Count**
DC-Insp-Q05R 6

1/3 L INSPIRE

Blue

16 lbs | w 4 in x h 11 in x d 4 in

Product UPC
8 50028 97251 9

Case UPC
8 50036 04513 7

Item Code **Case Count**
DC-Insp-Q06R 6

1/3 L INSPIRE

Pink

16 lbs | w 4 in x h 11 in x d 4 in

Product UPC
8 50028 97252 6

Case UPC
8 50036 04512 0

Item Code **Case Count**
DC-Insp-Q00R 6

1/3 L INSPIRE

White

16 lbs | w 4 in x h 11 in x d 4 in

Product UPC
8 50028 97253 3

Case UPC
8 50036 04511 3

Item Code **Case Count**
DC-Insp-Q07R 6



1/2 L INSPIRE

Green

17 lbs | w 4 in x h 12.5 in x d 4 in

Product UPC
8 50028 97255 7

Case UPC
8 50036 04510 6

Item Code **Case Count**
DC-Insp-H09R 6

1/2 L INSPIRE

Red

17 lbs | w 4 in x h 12.5 in x d 4 in

Product UPC
8 50028 97255 7

Case UPC
8 50036 045090

Item Code **Case Count**
DC-Insp-H03R 6

1/2 L INSPIRE

Black

17 lbs | w 4 in x h 12.5 in x d 4 in

Product UPC
8 50028 97256 4

Case UPC
8 50036 04508 3

Item Code **Case Count**
DC-Insp-H05R 6

1/2 L INSPIRE

Blue

17 lbs | w 4 in x h 12.5 in x d 4 in

Product UPC
8 50028 97257 1

Case UPC
8 50036 04507 6

Item Code **Case Count**
DC-Insp-H06R 6

1/2 L INSPIRE

Pink

17 lbs | w 4 in x h 12.5 in x d 4 in

Product UPC
8 50028 97258 8

Case UPC
8 50036 04506 9

Item Code **Case Count**
DC-Insp-H00R 6

1/2 L INSPIRE

White

17 lbs | w 4 in x h 12.5 in x d 4 in

Product UPC
8 50028 97259 5

Case UPC
8 50036 04505 2

Item Code **Case Count**
DC-Insp-H07R 6



1/3 L STERLING

16 lbs | w 4 in x h 11 in x d 4 in

Product UPC
8 50028 97278 6

Case UPC
8 50036 04518 2

Item Code **Case Count**
DC-Ster-Q01 6

1/2 L STERLING

17 lbs | w 4 in x h 12.5 in x d 4 in

Product UPC
8 50028 97279 3

Case UPC
8 50036 04517 5

Item Code **Case Count**
DC-Ster-H01 6



SODA SIPHON

STAINLESS STEEL

A unique blend of timeless elegance and tasteful design

With a stylish profile, the **Whip-It! Stainless Steel Soda Siphon** is the perfect accessory for any kitchen, tabletop or bar. When you're ready to add some sparkle to your carbonated drinks, our Whip-It! soda siphons paired with **Whip-It! Soda Chargers** deliver the taste and perfect fizz that exemplifies the quality behind the Whip-It! brand.

Features

A great, timeless way to add some sparkle to your favorite beverage

Comes with a stylized, art-deco top

Perfect for soda water, cocktails and more

Two-year Warranty

Includes



Charger Holder



Fork Puller





1 L STAINLESS STEEL | Gray Top

2.5 lbs | w 4 in x h 15 in x d 4 in

Product UPC 0 65626 86001 8
Item Code DS-Sda-L17-01S

Case UPC 0 65626 86101 5
Case Count 6



1 L STAINLESS STEEL | Black Top

2.5 lbs | w 4 in x h 15 in x d 4 in

Product UPC 0 65626 87001 7
Item Code DS-Sda-L05-01S

Case UPC 0 65626 87101 4
Case Count 6



SODA SIPHON

RUBBER COATED

Discover the refreshing fizz of pure soda water

Not only eye-catching and stylish, our **Whip-It! Rubber Coated Soda Siphon** is a statement of quality on your countertop. As beautiful as it is with its matching stylized head, the Whip-It! soda siphon is also ergonomic, and its rubber-coated body ensures that you have a good grip. Use this together with our **Whip-It! Soda Chargers** for the perfect fizz.

Features

Rubber coating provides extra grip

HACCP compliant

Includes charger holder and step-by-step instructions

Two-year Warranty

Includes



Charger Holder



Fork Puller





1 L SODA SIPHON | Red
RUBBER COATED

2 lbs | w 4 in x h 15 in x d 4 in

Product UPC
0 65626 59035 9

Case UPC
0 65626 59135 6

Item Code	Case Count
DS-Sda-L03	6

1 L SODA SIPHON | Black
RUBBER COATED

2 lbs | w 4 in x h 15 in x d 4 in

Product UPC
0 65626 59059 5

Case UPC
0 65626 59159 2

Item Code	Case Count
DS-Sda-L05	6

1 L SODA SIPHON | Blue
RUBBER COATED

2 lbs | w 4 in x h 15 in x d 4 in

Product UPC
0 65626 59069 4

Case UPC
0 65626 59169 1

Item Code	Case Count
DS-Sda-L06	6



FLEX TORCH

A state-of-the-art technology torch that boasts quality, precision and innovation

The **Whip-It! Flex Torch** is an exclusive and patented torch design. Engineered with a unique precision flame tip that rotates 0° and elevates to 45° and 90°, the Whip-It! Flex Torch is the ultimate tool in performance and versatility. Sporting superior Piezoelectric ignition technology and unmatched features that deliver a superior experience, the Whip-It! Flex Torch is available in a collection of colors and includes a carrying case and recipe booklet.

Features

Exclusive and patented design by Whip-It!

Unique rotating flame nozzle (0°, 45° and 90°) for versatile use

Robust 1350°C / 2500°F jet flame

Piezoelectric Ignition Technology with precision flame tip

Adjustable and lockable flame for versatility and hands-free use

Complete with carrying case and recipe booklet

Easily refillable for convenience

Limited Lifetime Warranty

Includes



Recipe Book



Carrying Case



GEAR BRIGADE
GEAR, GADGETS, AND COOL STUFF

FEATURED IN:

LIQUOR.COM SHOUTOUT LA

TechRepublic

THIS IS IT
NETWORK

HOLLY WOOD
DIGEST

●● Medium



ROTATING FLAME NOZZLE

0° | 45° | 90°



**"Most Innovative
Technology Product"**
StarChefs
International
Chefs Congress





FLEX | Chrome

16 lbs | w 6 in x h 9 in x d 3 in

Product UPC
8 58424 00205 2

Case UPC
8 58424 00234 2

Item Code **Case Count**
TC-Flex-01C 20



FLEX | Black

16 lbs | w 6 in x h 9 in x d 3 in

Product UPC
8 50028 97228 1

Case UPC
0 65626 86899 1

Item Code **Case Count**
TC-Flex-05R 20



FLEX | Blue

16 lbs | w 6 in x h 9 in x d 3 in

Product UPC
8 50028 97229 8

Case UPC
0 65626 86900 4

Item Code **Case Count**
TC-Flex-06R 20



FLEX | Green

16 lbs | w 6 in x h 9 in x d 3 in

Product UPC
8 50028 97230 4

Case UPC
0 65626 86901 1

Item Code **Case Count**
TC-Flex-09R 20



FLEX | Red

16 lbs | w 6 in x h 9 in x d 3 in

Product UPC
8 50028 97232 8

Case UPC
0 65626 86897 7

Item Code **Case Count**
TC-Flex-03R 20



FLEX | Black Chrome

16 lbs | w 6 in x h 9 in x d 3 in

Product UPC
8 58424 00206 9

Case UPC
8 58424 00230 4

Item Code **Case Count**
TC-Flex-05C 20



FLEX | Gun Metal

16 lbs | w 6 in x h 9 in x d 3 in

Product UPC
8 50028 97231 1

Case UPC
0 65626 86896 0

Item Code **Case Count**
TC-Flex-13 20



FLEX | Yellow

16 lbs | w 6 in x h 9 in x d 3 in

Product UPC
8 50028 97233 5

Case UPC
0 65626 86902 8

Item Code **Case Count**
TC-Flex-02-05R 20



FLEX | Gold Chrome

16 lbs | w 6 in x h 9 in x d 3 in

Product UPC
8 58424 00207 6

Case UPC
8 58424 00231 1

Item Code **Case Count**
TC-Flex-04C 20



TILT TORCH

Versatility and style any way you tilt it!

The **Whip-It! Tilt Torch** combines innovative design, ultra-lightweight technology and superior handling all in one. Its unique design features five easily adjustable flame angles for a broad spectrum of uses. Enjoy the comfort and versatility of the Tilt Torch at home, outdoors or in professional environments.

Features

Unique 5-angle rotating flame nozzle for a variety of applications

Robust 1300°C / 2372°F jet flame

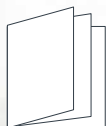
Adjustable and lockable flame

Full-color recipe booklet

Uses butane fuel (not included)

Limited Lifetime Warranty

Includes



Recipe Book



ROTATING ANGLES
for multi-purpose use





TILT TORCH | Sky Blue

0.48 lbs | w 3.94 in x h 6.18 in x d 1.61 in

Product UPC 8 50011 67557 1	Item Code TC-Tilt-15
Case UPC 8 50011 67565 6	Case Count 40



TILT TORCH | Red

0.48 lbs | w 3.94 in x h 6.18 in x d 1.61 in

Product UPC 8 50011 67557 9	Item Code TC-Tilt-03
Case UPC 8 50011 67558 8	Case Count 40



TILT TORCH | Blue

0.48 lbs | w 3.94 in x h 6.18 in x d 1.61 in

Product UPC 8 50011 67553 3	Item Code TC-Tilt-06
Case UPC 8 50011 67560 1	Case Count 40



TILT TORCH | Green

0.48 lbs | w 3.94 in x h 6.18 in x d 1.61 in

Product UPC 8 50011 67555 7	Item Code TC-Tilt-09
Case UPC 8 50011 67561 8	Case Count 40



TILT TORCH | Black

0.48 lbs | w 3.94 in x h 6.18 in x d 1.61 in

Product UPC 8 50011 67552 6	Item Code TC-Tilt-05
Case UPC 8 50011 67566 3	Case Count 40



TILT TORCH | White

0.48 lbs | w 3.94 in x h 6.18 in x d 1.61 in

Product UPC 8 50011 67554 0	Item Code TC-Tilt-07
Case UPC 8 50011 67563 2	Case Count 40



TILT TORCH | Gray

0.48 lbs | w 3.94 in x h 6.18 in x d 1.61 in

Product UPC 8 50011 67556 4	Item Code TC-Tilt-17
Case UPC 8 50011 67588 5	Case Count 40



BLOW TORCH

A powerhouse for searing, caramelizing, melting and more

Perfect for indoor and outdoor use, the **Whip-It! Blow Torch** will shine in any culinary situation. Lightweight and portable with a powerful flame, this torch will surely get the job done when caramelizing or browning your next culinary creation. Its sleek look and feel paired with Whip-It! butane fuel canisters make this torch extremely user friendly to both seasoned and amateur cooks alike.

Features

Attaches directly to Whip-It! butane fuel canisters (not included)

Maximum flame temperature
1371°C / 2500°F

Lightweight and portable

One-touch Piezoelectric ignition with adjustable jet flame

Includes



Recipe Book



Base Stand





BLOW TORCH | Gray

0.34 lbs | w 7.2in x h 2.5in x d 1.5in

Product UPC	Item Code
8 58424 00274 8	TC-Blwt-17
Case UPC	Case Count
8 58424 00288 5	30



BLOW TORCH | Black

0.34 lbs | w 7.2in x h 2.5in x d 1.5in

Product UPC	Item Code
8 58424 00268 7	TC-Blwt-05
Case UPC	Case Count
8 58424 00269 4	30



BLOW TORCH | White

0.34 lbs | w 7.2in x h 2.5in x d 1.5in

Product UPC	Item Code
8 58424 00272 4	TC-Blwt-07
Case UPC	Case Count
8 58424 00273 1	30



CORE PRO TORCH

The mightiest of mighty

The **Whip-It! Core Pro Torch** is a professional powerhouse tool with four, robust flames that create exquisite results and even texture across a multitude of surfaces. Perfect for grilling, searing or adding the finishing touch to meats and other food. Suitable for restaurants, BBQ, picnics, camping, outdoor activities and industrial purposes.

Features

One-touch Piezoelectric ignition

Four, brass flame lighters for an even texture across a variety of surfaces

Attaches directly to MAPP or propane cylinders (not included)

Maximum flame temperature
1982°C / 3600°F

Includes a base stand for hands-free use

Includes



Recipe Book



Base Stand





CORE PRO TORCH

0.617 lbs | w 8.82in x h 3.3in x d 1.93in

Product UPC	Item Code
8 50011 67583 0	TC-Core-06

Case UPC	Case Count
8 50011 67584 7	24

ION TORCH

Create restaurant-quality
culinary dishes

The **Whip-It! Ion Torch** delivers perfection with intuitive controls, ease of use and ergonomic design. Its Piezoelectric Ignition Technology provides the performance, accuracy and control you want in your kitchen or professional environment.

Features

Piezoelectric Ignition System

Adjustable flame and lock

Portable and durable

Easily refillable for convenience

Limited Lifetime Warranty

Includes



Recipe Book





ION | Green

0.71 lbs
w 5.1 in x h 6.8 in x d 2.5 in

Product UPC
8 58424 00280 9

Case UPC
8 58424 00219 9

Item Code **Case Count**
TC-lon-09-07R 24

ION | Black

0.71 lbs
w 5.1 in x h 6.8 in x d 2.5 in

Product UPC
8 58424 00278 6

Case UPC
8 58424 00298 4

Item Code **Case Count**
TC-lon-05-07R 24

ION | Red

0.71 lbs
w 5.1 in x h 6.8 in x d 2.5 in

Product UPC
8 58424 00277 9

Case UPC
8 58424 00287 8

Item Code **Case Count**
TC-lon-03-07R 24

ION | Blue

0.71 lbs
w 5.1 in x h 6.8 in x d 2.5 in

Product UPC
8 58424 00279 3

Case UPC
8 58424 00299 1

Item Code **Case Count**
TC-lon-06-07R 24

ION | Yellow

0.71 lbs
w 5.1 in x h 6.8 in x d 2.5 in

Product UPC
8 58424 00284 7

Case UPC
8 58424 00223 6

Item Code **Case Count**
TC-lon-02-05R 24

ION | All Black

0.71 lbs
w 5.1 in x h 6.8 in x d 2.5 in

Product UPC
0 65626 86742 0

Case UPC
0 65626 86772 7

Item Code **Case Count**
TC-lon-05R 24



ION | White

0.71 lbs
w 5.1 in x h 6.8 in x d 2.5 in

Product UPC
8 58424 00283 0

Case UPC
8 58424 00222 9

Item Code **Case Count**
TC-lon-07 24

ION | All Red

0.71 lbs
w 5.1 in x h 6.8 in x d 2.5 in

Product UPC
0 65626 86743 7

Case UPC
0 65626 86773 4

Item Code **Case Count**
TC-lon-03R 24

ION | All Blue

0.71 lbs
w 5.1 in x h 6.8 in x d 2.5 in

Product UPC
0 65626 86740 6

Case UPC
0 65626 86770 3

Item Code **Case Count**
TC-lon-06R 24

ION | Silver

0.71 lbs
w 5.1 in x h 6.8 in x d 2.5 in

Product UPC
8 58424 00282 3

Case UPC
8 58424 00221 2

Item Code **Case Count**
TC-lon-01 24

ION | All Green

0.71 lbs
w 5.1 in x h 6.8 in x d 2.5 in

Product UPC
0 65626 86741 3

Case UPC
0 65626 86771 0

Item Code **Case Count**
TC-lon-09R 24

ION | All Pink

0.71 lbs
w 5.1 in x h 6.8 in x d 2.5 in

Product UPC
8 58424 00275 5

Case UPC
8 58424 00285 4

Item Code **Case Count**
TC-lon-00R 24



ION LITE TORCH

Sleek design meets
robust functionality

Whip-It! Ion Lite Torch excels in portability and sporty appeal. Whether you are creating delicious meals, working on a garage project or exploring the great outdoors, the **Whip-It! Ion Lite** is the ideal torch for any use. Lightweight and equipped with a powerful Piezoelectronic high-output flame that is adjustable and precise, this torch speaks for itself with its stylish appearance and ease of use.

Features

Piezoelectric Ignition Technology

Powerful, high-output flame

Comfortable grip and adjustable flame size

Refillable for convenience

Lightweight and portable

Includes



Recipe Book





ION LITE | All Black

0.9 lbs | w 5.5 in x h 7.5 in x d 2.5 in

Product UPC
0 65626 87746 7

Case UPC
0 65626 87776 4

Item Code **Case Count**
TC-Lte-05R 24

ION LITE | All Red

0.9 lbs | w 5.5 in x h 7.5 in x d 2.5 in

Product UPC
8 50011 67543 4

Case UPC
8 50011 67547 2

Item Code **Case Count**
TC-Lte-03R 24

ION LITE | All Blue

0.9 lbs | w 5.5 in x h 7.5 in x d 2.5 in

Product UPC
8 50011 67544 1

Case UPC
8 50011 67548 9

Item Code **Case Count**
TC-Lte-06R 24

ION LITE | Pink

0.9 lbs | w 5.5 in x h 7.5 in x d 2.5 in

Product UPC
0 65626 87747 4

Case UPC
0 65626 87777 1

Item Code **Case Count**
TC-Lte-00R 24

ION LITE | All Green

0.9 lbs | w 5.5 in x h 7.5 in x d 2.5 in

Product UPC
8 50011 67545 8

Case UPC
8 50011 67549 6

Item Code **Case Count**
TC-Lte-09R 24

ION LITE | All Silver

0.9 lbs | w 5.5 in x h 7.5 in x d 2.5 in

Product UPC
8 50011 67546 5

Case UPC
8 50011 67550 2

Item Code **Case Count**
TC-Lte-01 24



ION LITE | White

0.9 lbs | w 5.5 in x h 7.5 in x d 2.5 in

Product UPC
0 65626 87744 3

Case UPC
0 65626 87774 0

Item Code **Case Count**
TC-Lte-07 24

ION LITE | Red

0.9 lbs | w 5.5 in x h 7.5 in x d 2.5 in

Product UPC
0 65626 87743 6

Case UPC
0 65626 87773 3

Item Code **Case Count**
TC-Lte-03-07R 24

ION LITE | Blue

0.9 lbs | w 5.5 in x h 7.5 in x d 2.5 in

Product UPC
0 65626 87740 5

Case UPC
0 65626 87770 2

Item Code **Case Count**
TC-Lte-06-07R 24

ION LITE | Black

0.9 lbs | w 5.5 in x h 7.5 in x d 2.5 in

Product UPC
0 65626 87742 9

Case UPC
0 65626 87772 6

Item Code **Case Count**
TC-Lte-05-07R 24

ION LITE | Green

0.9 lbs | w 5.5 in x h 7.5 in x d 2.5 in

Product UPC
0 65626 87741 2

Case UPC
0 65626 87771 9

Item Code **Case Count**
TC-Lte-09-07R 24

ION LITE | Yellow

0.9 lbs | w 5.5 in x h 7.5 in x d 2.5 in

Product UPC
0 65626 87745 0

Case UPC
0 65626 87775 7

Item Code **Case Count**
TC-Lte-02-05R 24



NEO TORCH

Discover sleek, versatile
and power

This versatile, on-the-go **Whip-It! Neo Torch** is perfect for everything from the kitchen to the outdoors and more. Ideal for any craftsman or hobbyist. It has an adjustable flame that will produce a wide or narrow flame to handle a variety of tasks. A simple, push-button ignition lets you light up and get to work quickly.

Features

Adjustable flame and lock

Easily refillable for convenience

Uniquely branded emblem
and ignition button

Hands free use

Limited Lifetime Warranty

Includes



Recipe Book





NEO | Black

12 lbs | w 4.5 in x h 7 in x d 4.5 in

Product UPC
8 50028 97261 8

Case UPC
8 50028 97270 0

Item Code	Case Count
TC-NEO-05R	10



NEO | White

12 lbs | w 4.5 in x h 7 in x d 4.5 in

Product UPC
8 50028 97263 2

Case UPC
8 50028 97272 4

Item Code	Case Count
TC-NEO-07	10



NEO | Red

12 lbs | w 4.5 in x h 7 in x d 4.5 in

Product UPC
8 50028 97260 1

Case UPC
8 50028 97269 4

Item Code	Case Count
TC-NEO-03R	10



NEO | Blue

12 lbs | w 4.5 in x h 7 in x d 4.5 in

Product UPC
8 50028 97262 5

Case UPC
8 50028 97271 7

Item Code	Case Count
TC-NEO-06R	10



NEO | Silver

12 lbs | w 4.5 in x h 7 in x d 4.5 in

Product UPC
8 50028 97266 3

Case UPC
8 50028 97275 5

Item Code	Case Count
TC-NEO-01	10



NEO | Gray

12 lbs | w 4.5 in x h 7 in x d 4.5 in

Product UPC
8 50036 04500 7

Case UPC
8 50036 04501 4

Item Code	Case Count
TC-NEO-17R	10



NEO | Green

12 lbs | w 4.5 in x h 7 in x d 4.5 in

Product UPC
8 50028 97264 9

Case UPC
8 50028 97273 1

Item Code	Case Count
TC-NEO-09R	10



NEO | Pink

12 lbs | w 4.5 in x h 7 in x d 4.5 in

Product UPC
8 50028 97265 6

Case UPC
8 50028 97274 8

Item Code	Case Count
TC-NEO-00R	10



NEO | Blue Chrome & Black

12 lbs | w 4.5 in x h 7 in x d 4.5 in

Product UPC
8 50028 97268 7

Case UPC
8 50028 97277 9

Item Code	Case Count
TC-NEO-06C-05R	10



NEO | Silver & Black

12 lbs | w 4.5 in x h 7 in x d 4.5 in

Product UPC
8 50028 97267 0

Case UPC
8 50028 97276 2

Item Code	Case Count
TC-Neo-01-05R	10



EDGE TORCH

Take comfort, performance
and technology to the next level

Enhanced with a unique and distinctive curved design, the **Whip-It! Edge Torch** is wind resistant with a wide and weighted base. It is portable and robust with a large, push-button ignition that makes it double as a high-performance, tabletop lighter. Configured with an large fuel tank and powerful Piezoelectric Ignition System, the **Whip-It! Edge Torch** is expertly manufactured for accuracy and control.

Features

Unique, lightweight, curved design
equipped with a wind-resistant flame

Adjustable and lockable flame to keep
it effortlessly lit

Large, push-button ignition for superior
grip and comfort

Vented hood for optimum performance

Refillable for convenience

Limited Lifetime Warranty

Includes



Recipe Book



**EDGE | Red**

0.8 lbs | w 5.5 in x h 7 in x d 2.5 in

Product UPC
8 50011 67586 1**Case UPC**
8 50011 67595 3**Item Code**
TC-Edge-03R**Case Count**
24**EDGE | Blue**

0.8 lbs | w 5.5 in x h 7 in x d 2.5 in

Product UPC
8 50011 67592 2**Case UPC**
8 50011 67599 1**Item Code**
TC-Edge-06R**Case Count**
24**EDGE | Silver**

0.8 lbs | w 5.5 in x h 7 in x d 2.5 in

Product UPC
8 50011 67591 5**Case UPC**
8 50011 67598 4**Item Code**
TC-Edge-01**Case Count**
24**EDGE | Pink**

0.8 lbs | w 5.5 in x h 7 in x d 2.5 in

Product UPC
8 50011 67587 8**Case UPC**
8 50011 67596 0**Item Code**
TC-Edge-00R**Case Count**
24**EDGE | Rose Gold**

0.8 lbs | w 5.5 in x h 7 in x d 2.5 in

Product UPC
8 50011 67593 9**Case UPC**
8 58424 00256 4**Item Code**
TC-Edge-12**Case Count**
24**EDGE | Chrome**

0.8 lbs | w 5.5 in x h 7 in x d 2.5 in

Product UPC
8 50011 67589 2**Case UPC**
8 50011 67597 7**Item Code**
TC-Edge-01C**Case Count**
24**EDGE | Black**

0.8 lbs | w 5.5 in x h 7 in x d 2.5 in

Product UPC
8 50011 67585 4**Case UPC**
8 50011 67594 6**Item Code**
TC-Edge-05R**Case Count**
24**EDGE | Black Chrome**

0.8 lbs | w 5.5 in x h 7 in x d 2.5 in

Product UPC
8 58424 00215 1**Case UPC**
8 58424 00260 1**Item Code**
TC-Edge-05C**Case Count**
24

STEALTH TORCH

Move with comfort and function

While the **Whip-It! Stealth Torch** has the sculptural sophistication of a modern art piece, it also has the functionality and durability of an everyday kitchen tool. Built with an adjustable and precise flame, it aims to please with a plethora of uses. The Stealth is impressively lightweight and equipped with a comfortable grip. It also comes with a lockable flame for ultimate control.

Features

Piezoelectric Ignition System

Durability and comfortable grip

Sleek design with superior performance

Ultra lightweight and portable

Limited Lifetime Warranty

Includes



Recipe Book





STEALTH | Black

0.32 lbs | w 4.1in x h 5.1in x d 1.3in

Product UPC	Item Code
8 58424 00289 2	TC-Stea-05
Case UPC	Case Count
8 58424 00297 7	40



STEALTH | Blue

0.32 lbs | w 4.1in x h 5.1in x d 1.3in

Product UPC	Item Code
8 58424 00293 9	TC-Stea-06
Case UPC	Case Count
8 50011 67501 4	40



STEALTH | Gold

0.32 lbs | w 4.1in x h 5.1in x d 1.3in

Product UPC	Item Code
8 58424 00294 6	TC-Stea-04
Case UPC	Case Count
8 50011 67502 1	40



STEALTH | Platinum

0.32 lbs | w 4.1in x h 5.1in x d 1.3in

Product UPC	Item Code
8 58424 00296 0	TC-Stea-16
Case UPC	Case Count
8 50011 67504 5	40



STEALTH | Silver

0.32 lbs | w 4.1in x h 5.1in x d 1.3in

Product UPC	Item Code
8 58424 00295 3	TC-Stea-01
Case UPC	Case Count
8 50011 67503 8	40



STEALTH | White

0.32 lbs | w 4.1in x h 5.1in x d 1.3in

Product UPC	Item Code
8 58424 00292 2	TC-Stea-07
Case UPC	Case Count
8 50011 67500 7	40



MOTIF TORCH

Take it to the next level

Crafted with an exquisite look of a dispenser and the utility of a torch, the **Whip-It! Motif Torch** is stylishly designed to show off its personality. Transform recipes into stylish dishes within minutes while precisely maneuvering a variety of applications in professional environments.

Features

Unique decorative design
for a variety of applications

Rubber coating provides extra grip

Adjustable and lockable flame

Uses butane fuel (not included)

Limited Lifetime Warranty

Includes



Recipe Book





MOTIF | All Black

0.58 lbs | w 1.94 in x h 7.67 in x d 4.29 in

Product UPC

8 50036 04590 8

Case UPC

8 10100 48000 4

Item Code
TC-Motif-05-05R

Case Count
20

MOTIF | All White

0.58 lbs | w 1.94 in x h 7.67 in x d 4.29 in

Product UPC

8 50036 04595 3

Case UPC

8 10100 48005 9

Item Code
TC-Motif-07-07R

Case Count
20

MOTIF | All Red

0.58 lbs | w 1.94 in x h 7.67 in x d 4.29 in

Product UPC

8 50036 04594 6

Case UPC

8 10100 48004 2

Item Code
TC-Motif-03-03R

Case Count
20

MOTIF | All Blue

0.58 lbs | w 1.94 in x h 7.67 in x d 4.29 in

Product UPC

8 50036 04591 5

Case UPC

8 10100 48002 8

Item Code
TC-Motif-05-06R

Case Count
20

MOTIF | All Silver

0.58 lbs | w 1.94 in x h 7.67 in x d 4.29 in

Product UPC

8 50036 04589 2

Case UPC

8 50036 04599 1

Item Code
TC-Motif-01-01R

Case Count
20



MOTIF | All Green

0.58 lbs | w 1.94 in x h 7.67 in x d 4.29 in

Product UPC

8 50036 04592 2

Case UPC

8 10100 48001 1

Item Code
TC-Motif-09-09R

Case Count
20

MOTIF | All Pink

0.58 lbs | w 1.94 in x h 7.67 in x d 4.29 in

Product UPC

8 50036 04593 9

Case UPC

8 10100 48003 5

Item Code
TC-Motif-00-00R

Case Count
20

MOTIF | Black & Silver Chrome

0.58 lbs | w 1.94 in x h 7.67 in x d 4.29 in

Product UPC

8 50036 04588 5

Case UPC

8 50036 04598 4

Item Code
TC-Motif-05-01C

Case Count
20

MOTIF | Black & Black Chrome

0.58 lbs | w 1.94 in x h 7.67 in x d 4.29 in

Product UPC

8 50036 04586 1

Case UPC

8 50036 04596 0

Item Code
TC-Motif-05-05C

Case Count
20

MOTIF | Black & Rose Gold

0.58 lbs | w 1.94 in x h 7.67 in x d 4.29 in

Product UPC

8 50036 04587 8

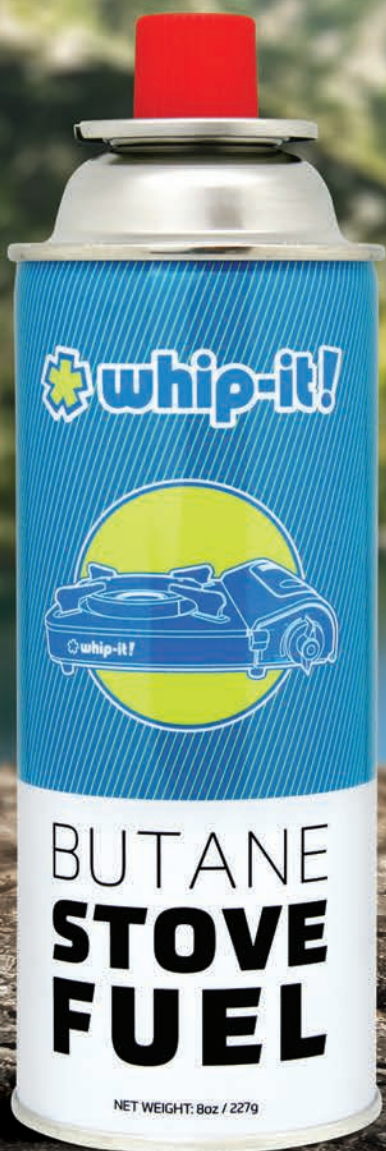
Case UPC

8 50036 04597 7

Item Code
TC-Motif-05-12

Case Count
20





STOVE FUEL BUTANE | 8 OZ

Introducing Whip-It! Butane Stove Fuel

Whether you're out camping, entertaining guests or at an event where electricity is not readily available, grab the **Whip-It! Butane Stove Fuel**. This stove fuel is light, reliable, and perfect for countertop portable ranges. Keeps your food hot and lasts 2 hours at high heat and up to 4 hours at a simmer. Go ahead and turn up the heat with Whip-It! Butane Stove Fuel!

Features

High-performance gas for portable appliances

Rim vent release system (CRV equipped)

Long-lasting fuel at high heat

Tripled seamed structure

UL approved



STOVE FUEL BUTANE

8 oz

0.7 lbs | radius 1.3 in x h 7.5 in x d 0.3 in³

Product UPC 8 50011 67529 8
Item Code BS-StoveFuel

Case UPC 8 50011 67531 1
Case Count 28

PREMIUM BUTANE | 420 ML

Virtually zero impurities extracted from the North Sea

With 420ml of butane gas, you can enjoy the same great quality with more quantity of the purest butane. Extracted from the North Sea, it is backed by several worldwide governing bodies from Quality Control Institutions. It is butane light and torch fluid in its finest form. Virtually zero impurities.

Features

420mL of supreme quality butane gas

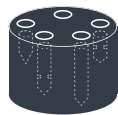
Purest natural butane sourced from the North Sea

Ensures lighters and torches are free from clogging and produce the cleanest burn

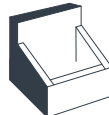
Top-notch premium butane for quality and performance

Comes with 5 tip adapters for precise refilling into any lighter or torch

Includes



Variable Nozzle Cap Display



Box to POP



PREMIUM BUTANE 420ML

420 mL

0.7 lbs | w 2 in x h 11.3 in x d 2 in

Product UPC 0 65626 86450 4
Item Code BU-Prem-BOGO420

Case UPC 0 65626 86470 2
Case Count 72

PREMIUM BUTANE XL | 540 ML

Get more of the purest – more quantity, same great quality

Whip-It! Premium Butane XL is a highly trusted and supreme quality butane gas. It is the purest natural butane sourced from specific gas fields in the North Sea about 200 miles off the Scottish Coast. The premium quality ensures your lighters and torches are free from clogging and produce the cleanest burn. This is top-notch, premium butane for quality and performance.

Features

540mL of supreme quality butane gas

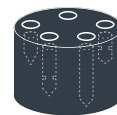
Purest natural butane sourced from the North Sea

Ensures lighters and torches are free from clogging and produce the cleanest burn

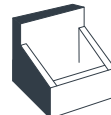
Top-notch premium butane for quality and performance

Comes with 5 tip adapters for precise refilling into any lighter or torch

Includes



Variable Nozzle Cap Display



Box to POP



PREMIUM BUTANE XL

540 mL

0.9 lbs | w 2 in x h 11.3 in x d 2 in

Product UPC 0 65626 86016 2
Item Code BU-Prem-540

Case UPC 0 65626 86036 0
Case Count 48





MINI PREMIUM BUTANE | 100 ML

Take this mini catalyst for applications on the go.

Whip-It! Mini Premium Butane is the ideal size for your portable needs. Packed with 100mL of the highest quality North Sea butane and ideal for use on-the-go. **Whip-It! Mini Premium Butane** contains virtually zero impurities and verified by Quality Control Institutions worldwide.

Features

100mL of supreme quality butane gas

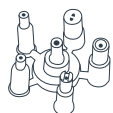
Produces the cleanest burn to ensure lighters and torches won't clog

Top-notch, premium butane for quality and performance

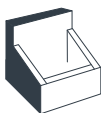
Comes with 5 tip adapters for precise refilling into any lighter or torch

Box cleverly converts to POP display

Includes



Five adapters included in cap



Box to POP



MINI PREMIUM BUTANE

100 mL

0.2 lbs | w 1.5 in x h 7 in x d 1.5 in

Product UPC
8 50011 67536 6

Item Code
BU-Prem-Mini100

Case UPC
8 50011 67538 0

Case Count
144

BUTANE 5 | 300 ML

Quality refined and cold filtered 5 times for maximum purity.

Whip-It! 5 Butane is a quality butane gas that is cold filtered more than five times for purity. It is purified through several chambers of active carbon towers made of charcoal filters that refine the butane gas from impurities and odor to ensure quality performance.

Features

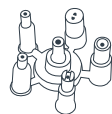
Refined 5 times to create high-quality butane

Multi-purpose butane lighter and torch fluid

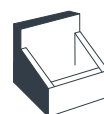
Comes with a metal fill tip and 5 assorted tip adapters (included in the cap) to accommodate any refillable lighter or torch

Box cleverly converts to POP display

Includes



Five adapters included in cap



Box to POP



BUTANE 5

300 mL

Box of 12 Cans

0.5 lb | 1 in radius x h 9 in

7.5 lb | w 8.5 in x h 6.5 in x d 9.5 in

Product UPC
8 50011 67526 7

Item Code
Butane 5 UK

Case UPC
8 50011 67528 1

Item Code
Butane 5 UK - 12PC

HOT SPOT STOVE

Cooking on the go!

Robust and versatile, the portable **Whip-It! Hot Spot Butane Stove** is perfect for all outdoor activities and events. It comes equipped with an automatic ignition, flame adjustment control, wind protection and includes a handy carrying case that protects the unit and makes transporting a breeze. Brew coffee, heat soup and bring together the perfect meal for any occasion or adventure!

Features

Portable, lightweight design

Automatic ignition

Adjustable flame for various cooking temperatures

9,000 BTU burner with 9.4" cooking surface

Automatic safety shut-off

Uses butane gas canister (not included)

Includes



Carrying Case

FEATURED IN:
SWEPT AWAY
WITH JENNIFER BROOKE





HOT SPOT STOVE | Black
with carrying case

3.3 lbs | w 13.3in x h 3.5in x d 11in

Product UPC **Item Code**
8 50011 67562 5 ST-Hotspot-05

Case UPC **Case Count**
8 50028 97200 7 6



HOT SPOT STOVE | Silver
with carrying case

3.3 lbs | w 13.3in x h 3.5in x d 11in

Product UPC **Item Code**
8 58424 00261 8 ST-Hotspot-01

Case UPC **Case Count**
8 58424 00271 7 6

GRILLMATE

BUTANE STOVE

Grill your faves any time, any place!

The **Whip-It! GrillMate** is a versatile station for all your grilling needs. Perfect for s'mores, kebabs, meats, seafood, vegetables and more. Enjoy heat distribution that evenly cooks the food while enhancing its taste and flavor.

Features

Automatic ignition

Adjustable flame for various cooking temperatures

Automatic safety shut-off

Removable tray for easy cleaning

Perfect for BBQs, picnics, camping & emergencies

Carrying case included

7,200 BTU

Includes



Carrying Case





GRILLMATE STOVE | Black with carrying case

5 lbs | w 15.5in x h 4.7in x d 9in

Product UPC	Item Code
8 50028 97283 0	ST-Grillmate-05
Case UPC	Case Count
8 50036 04572 4	5



GRILLMATE STOVE | Silver with carrying case

5 lbs | w 15.5in x h 4.7in x d 9in

Product UPC	Item Code
8 50028 97281 6	ST-Grillmate-01
Case UPC	Case Count
8 50036 04573 1	5



TIN GIFT PACK

This unique and fun gift tin comes with an assortment of Whip-It! Brand essentials to fuel your creativity. If you are looking for the perfect bundled gift for yourself or a fellow culinary enthusiast, the **Whip-It! Tin Gift Pack** is the perfect pick.

Features

Whip-It! Whipped Cream Dispenser

200 Whip-It! Cream Chargers

Velvet Dispenser Bag

Tote Bag

Recipe Book



TIN GIFT PACK

19 lbs | Tin Bucket, Cream Dispenser, Velvet Dispenser Bag, 200 N2O Chargers, Tote Bag, Recipe Book

Item Code
V-Gift_Tin

DIY KIT

Whether you're a culinary pro or a novice chef, take your culinary experience to a whole new level with homemade creations! Embark on new cooking adventures and expand your creativity at the comfort of your home. You don't have to be a trained chef to whip up something amazing. This **Whip-It! Do-It-Yourself (DIY) Kit** makes it a breeze to create enticing sweet and savory dishes and also makes the perfect gift for any savvy, culinary beginner or adventurers.

Features

High-quality, 1/4L Whip-It! Whipped Cream Dispenser

5 pack of Whip-It! Cream Chargers

Whip-It! Apron

Recipe booklet and clear reusable plastic tote bag

Great for making whipped cream, pastries, molecular cooking and beverages



FEATURED IN:
Miss
in the kitchen

DIY KIT

4 lbs | Reusable Tote Bag, Cream Dispenser, Apron, 5 N2O Chargers, Recipe Booklet

Item Code
Red: V-DIY-Insp03R
Pink: V-DIY-Insp00R
Black: V-DIY-Insp05R
Blue: V-DIY-Insp06R
White: V-DIY-Insp07R
Green: V-DIY-Insp09R



PREMIUM INJECTOR TIPS SET

Constructed from durable stainless steel, these commercial quality injector tips are a must have for culinary professionals and gourmet enthusiasts alike. The versatile interchangeable tips offer you a full range of applications, both sweet and savory. The longer injector tips are ideal for filling delectable treats like jelly donuts and eclairs, as well as injecting brines and marinades into meats. The shorter injector tips are perfect for decorating and stuffing everything from cupcakes to hors d'oeuvres. Each tip comes with a protective cover for easy storage.

Features

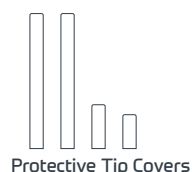
Commercial-quality injector tips

Fits all standard whipped cream dispensers

Dishwasher safe

Set includes: 4 injector tips and 4 protective covers

Includes



PREMIUM INJECTOR TIPS SET

3.4 lbs | w 13 in x h 3.8 in x d 12 in

Product UPC **Item Code**
0 65626 86642 3 AD-InjTipSet

Case UPC **Case Count**
0 65626 86672 0 6

PREMIUM DECORATOR TIPS SET

When presentation is important, you'll be glad to have these professional-quality decorator tips. Made of high-quality stainless steel and silicone, they'll withstand heavy use and won't break or crack. They're easily interchangeable and easy to clean. Use the star and tulip tips for dispensing whipped cream onto beverages or for garnishing pies, cakes, mousses and other desserts. Use the round tip for dispensing unique sauces and foams for any molecular gastronomy creation.

Features

Commercial-quality decorator tips

Fits all standard whipped cream dispensers

Dishwasher safe

4-piece set includes: 1 stainless steel tulip tip, 1 stainless steel star tip, 1 stainless steel round tip and 1 silicone star tip



PREMIUM DECORATOR TIPS SET

3.4 lbs | w 13 in x h 3.8 in x d 12 in

Product UPC **Item Code**
0 65626 86642 3 AD-DispTipSet

Case UPC **Case Count**
0 65626 86672 0 6



Featured recipe:
Chef Derrick Fox's
**Lobster Benedict with
Squid Ink Hollandaise
on Avocado Toast**



FEATURED IN:

Recipe Corner

FUNNEL & STRAINER

Our **Whip-It! Funnel and Strainer Set** fits together seamlessly and is made with commercial-quality, stainless steel that withstands heavy use, is easy to clean and dishwasher safe. The large, 7-inch diameter accommodates a broader volume range and helps to prevent spillage to keep your work area clean and everyone safe. Both the strainer and funnel are designed with sturdy handles for convenience and added stability. The strainer and funnel can be separated and utilized independently for a variety of applications.

Features

Made with commercial-quality, stainless steel

Large, 7-inch diameter to reduce spillage

Sturdy handles on both the funnel and strainer for easier grip

Fits all standard cream dispensers

Easy to clean and dishwasher safe

2-piece set includes: 1 stainless steel funnel and 1 strainer insert



FUNNEL & STRAINER

304 stainless steel (same as 18/10 grade) | 750ml volume
1.2 in diameter by 1.1 in deep funnel spout size | 7 in diameter strainer size

Item Code
MX-Funnel

Product UPC
8 58424 00290 8

Case UPC
8 58424 00218 2



APRON

The perfect combination of style and functionality. This **Whip-It! Apron** is your stylish sidekick against the most demanding project. With plenty of coverage and pockets for storage, it's all you need to become a gourmet chef! Protects from inevitable messes while preparing foods, replenishing, or serving. Also comes with an adjustable neck strap for a superior fit, 2 front pockets, and waist ties. Makes a wonderful gift for yourself or a friend. Perfect for picnics, cook-offs, barbecues, and restaurants.

Features

Comes with two front pockets

Adjustable ties at the neck and long ties at the waist

Makes a great thoughtful gift for any culinary lover, crafter, gardener or painter

Perfect for baking, cooking, grilling, barbecuing and serving



APRON

1 lbs | 1 in wide adjustable neck strap,
24 in waist ties | 55/45 poly/cotton twill

Item Code
MC-Apron-05

Product UPC
8 50028 97202 1

OVEN MITTS

These colorful, durable **Whip-It! Oven Mitts** are perfect for indoor/outdoor cooking – from moving hot dishes in and out of ovens, rearranging hot oven racks, and handling hot pans on and off the stove to high temperature backyard grilling. Extra length provides full forearm heat protection and textured grip allows you to safely grip any pot and pan with confidence.

Features

Two textured, non-slip silicone grip mitts

Designed with extra length for wrist and forearm coverage

Heavy-duty, heat resistant food-grade silicone (BPA free) with inner soft quilted cotton lining

Heat resistant up to 428°F / 220°C

Hand wash only



OVEN MITTS

1 lbs | 13.78 in x 7.09 in

Item Code
MX-OvenMitt

Product UPC
8 50011 67508 3



SNAPBACK CAP

Our **Whip-It! Snapback Cap** boasts a sturdy, lightweight body that provides style and comfort. Start turning heads with this unique apparel item. A high-profile cap that comes in an eye-catching combination with reinforced stitching for added durability. A fused, hard buckram sewn into the front of the crown provides excellent structure and helps maintain the shape. The plastic, adjustable strap enables you to achieve the ideal size and maximum comfort with ease.

Features

Uniquely branded side logo, undervisor and label tag

Structured, six-panel, high-profile cap

Classic shape

Snapback closure

Adjustable size



SNAPBACK CAP

1 lb | Six-panel, high-profile, classic shape
Snapback closure

Item Code
MH-Cap-05

Item Code
8 50028 97201 4

T-SHIRT

This **Whip-It! Brand T-shirt** is comfortable, casual and loose fitting. Made from 100% cotton, it wears well on anyone. Sport yours today! It will quickly become one of your favorites.

Features

100% Cotton

Double-needle, stitched bottom hem and sleeves

Unisex

Color: Black



T-SHIRT

1 lb | 100% Cotton

Item Codes

Small: MC-TShirt-07S
Medium: MC-TShirt-07M
Large: MC-TShirt-07L
X-Large: MC-TShirt-07XL
XX-Large: MC-TShirt-072XL
XXX-Large: MC-TShirt-073XL



FACE MASK

The **Whip-It! Face Mask** is equally stylish and comfortable. Thanks to an adjustable nose bridge and ear straps that will make it fit securely. Take your “maskie” (translation: a mask selfie) to the next level with these super stylish masks. Even better, it features optional filter pockets to add in your own filters.

Features

One size fits all

Optional filter pockets to add in your own filters

Adjustable nose bridge and ear straps

Washable and reusable



FACE MASK

9.25in x 6.10in (±0.20in)

Item Code
MC-Mask-05

Item Code
8 50028 97204 5

JACKETS

Introducing the **Whip-It! Brand Soft Shell Jackets** for men and women! Comfortable, reliable and a go-to basic that repels rain and protects against wind. Its clean silhouette and traditional black color makes for a casual or professional sleek look.

Features

100% polyester woven shell and micro fleece lining

1000mm fabric waterproof rating

Zip-through cadet collar with chin guard

Reverse coil zippers

Front zippered pockets



MEN'S JACKET

Small, Medium, Large, X-Large, XX-Large

Item Codes

Small: MC-Jckt-05MS	X-Large: MC-Jckt-05MXL
Medium: MC-Jckt-05MM	XX-Large: MC-Jckt-05M2XL
Large: MC-Jckt-05ML	XXX-Large: MC-Jckt-05M3XL



WOMEN'S JACKET

Small, Medium, Large, X-Large

Item Codes

Small: MC-Jckt-05WS	X-Large: MC-Jckt-05WXL
Medium: MC-Jckt-05WM	XX-Large: MC-Jckt-05W2XL
Large: MC-Jckt-05WL	



TRAVEL BACKPACK

Our sleek **Whip-It! Travel Backpack** is the ultimate accessory for your tech-savvy and modern lifestyle. It pushes mobile technology to the limit by providing access for charging your electronics right inside your bag. Breeze through security checkpoints as this TSA-friendly bag features a zip-around, laptop compartment that opens completely for inspection. Great for day trips, traveling and outdoor activities. With a wealth of handy compartments and clever features, you'll never be short of usable space with this strong, durable and practical backpack.

Features

Checkpoint-friendly compartment features a padded, laptop sleeve that fits up to 17" laptops

Dedicated neoprene sleeve in main compartment specifically designed for power banks and external batteries

Features two, elastic pockets – one to fit an iPad, tablet or eReader and another for power cords and small electronic accessories

Wide, adjustable backpack straps provide comfort

Utilize padded, top-grab handle for transport



LAPTOP BACKPACK

3 lbs | w 12.75 in x h 19.5 in x d 12.75 in

Item Code
MB-Bkpk-05

Product UPC
8 50028 97205 2

PET BANDANA

Accessorize your pet in this hip, classic tie-on **Whip-It! Pet Bandana**. Customized with our Whip-It! logo and blue paw prints set against a black background, your furry pal will be a fashion stand-out sporting this stylish accessory!

Features

Fashion statement for your favorite furry pal

Makes the perfect gift for any pet lover

Multiple ways to accessorize your pet

21" x 21" x 32"



FEATURED IN:
Posh Lifestyle & Beauty

PET BANDANA

w 32 in x h 21 in x d 21 in

Item Code
MP-Bandana

Product UPC
8 50028 97203 8



USB FLASH DRIVE

This unique, stylish **Whip-It! USB Flash Drive** is a fun and convenient device for saving files, music and images to make data transfer less of a hassle. This flash drive offers dependable and reliable memory. Doubles as a keychain you can take on-the-go and pairs nicely with your nifty **Whip-It! Travel Backpack**.

Features

Stylish memory stick

Compact and convenient data transfer

Makes a great gift

Storage: 64 GB



USB FLASH DRIVE

0.025 lb

Item Code
ME-USB64

Product UPC
8 50036 04555 7

FLASH LIGHT

Whip-It! is lighting the way with this attractive compact flashlight with convenient carabiner clip. Option between focus-beam flashlight or mini lantern source. Its lightweight aluminum construction and dual function design makes it the must-have accessory. Clip it onto your keychain for quick easy illumination of dark spaces, perfect to have on hand in an emergency.

Features

Use as a focused-beam or a mini lantern

Convenient carabiner clip

Push button on/off switch

Batteries included



FLASH LIGHT

0.025 lb

Item Code
MX-Light

Item Code
8 50028 97207 6



TEDDY BEAR

Everyone loves a soft hug and snuggle! Our **Whip-It! Teddy Bear** is a cute and cuddly companion that comes dressed in a customized Whip-It! shirt and embroidered paws. Simply perfect for cuddling and a cherished gift that brings a lifetime of joy and happiness.

Features

Classically cute, plush teddy bear

Makes a perfect gift for any occasion

100% Polyester

6" W x 6" H



TEDDY BEAR

0.131 lb

Item Code
MX-Bear

Product UPC
8 50036 04574 8

LAPEL PIN

Whip-It! Brand Lapel Pins are next-level cool. Show your love for the brand by pairing it with your favorite Whip-It! merchandise gear. Affix these pins onto your caps, backpacks, shirts, ties, hats, bags for a versatile, fashionable accessory for any occasion. Makes a great conversation starter!

Features

Classic signature logo

Premium base metal, not bendable or plastic



LAPEL PIN

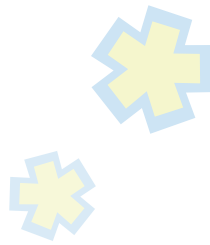
0.02 lb

Item Code
MX-Pin

Item Code
8 50028 97206 9



"We rely on tools that are easy-to-use with a high level of efficiency. The **Whip-It! Flex Torch** is just that – allowing us to brûlée our pastries with speed and consistency."



"**Whip-It!** products are my best friends to cook with. I love not just how functional they are, but how **BELLA** they look. The Gold Chrome dispenser & torch are a must to carry around, but you can also have a different one for every service. Nowadays, even fashion in the kitchen matters to express yourself!"



"As a Food Service professional in this field for the past 20 years, I have come to appreciate quality products and craftsmanship. **Whip-It! Brand** dispensers and cream chargers are just that – some of the best products on the market. They make my job easier and more consistent on a day to day basis."



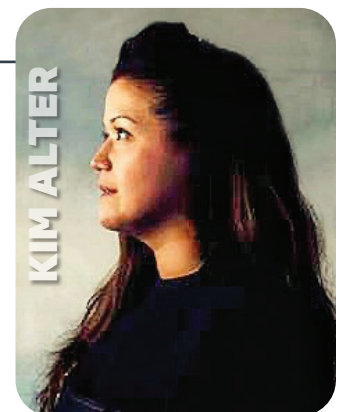
"**Whip-It!** allows us to add an array of textures and concentrate flavors through its ability to carbonate and infuse things quickly and consistently time after time."



"Tremendous quality, innovative gear and great people, it's just a no brainer for me to use **Whip-It!** products in my food adventures."



"I have been using **Whip-It! Brand** products for a long time and they have never let me down! Whether I am using the dispensers or chargers, the quality always holds up to our standards."



WHAT CHEFS ARE SAYING



KIM STODEL

"I love using my **Whip-It! Brand** dispenser to make unique charged cocktails, foams, and infusions. The **Whip-It! Flex Torch** is a welcome addition to my bar. Smoke, flamed twists, charred herbs and spices are a breeze."



DEBBIE GOLD



LEVATINO HARRIS

"I love **Whip-It! Brand** products. Everything I've used has been absolutely amazing and easy to use. Makes my life so much easier. You guys rock!"

"I am a big fan of the **Whip-It! Brand** products! I am always looking for ways to be more efficient in the kitchen and their products assist me in achieving that goal."



ALISON TRENT

"I need the latest tools that help me stand out when developing recipes and plating items. **Whip-It! Brand** continues to offer unique products that give me a competitive advantage."



MATTHEW BREMS



KATSUJI TANABE



GABRIEL RUCKER

"**Whip-It!** is the go-to canister for all my needs whether hot or cold, it will never let you down."



JENNER TOMASKA

"**Whip-It!** allows us to add an array of textures and concentrate flavors through its ability to carbonate and infuse things quickly and consistently time after time."



ADAM TORTOSA



CONTACT US

CALL



Telephone: 650.588.2203



Toll Free: 800.500.0583



Fax: 650.588.8568

Email



General Info

sales@unitedbrands.us



Customer Service

customerservice@unitedbrands.us

www.unitedbrands.us





unitedbrands 

www.unitedbrands.us