



Operator's Manual

CAYENNE® HOT FOOD MERCHANDISER



Thank you for purchasing this Vollrath equipment. Before operating the equipment, read and familiarize yourself with the following operating and safety instructions. SAVE THESE INSTRUCTIONS FOR FUTURE REFERENCE. Save the original box and packaging. Use this packaging to ship the equipment if repairs are needed.

Item	Model	Description	Voltage	Watts	Amps	Plug
40733	FMA7026	26" Hot Food Merchandiser	120V AC	1440	12 Amps	5-15P
40734	FMA7036	36" Hot Food Merchandiser	120V AC	1440	12 Amps	5-15P
40735	FMA7048	48" Hot Food Merchandiser	120V AC	1440	12 Amps	5-15P

Register your product on-line at www.vollrath.com

SAFETY PRECAUTIONS

To ensure safe operation, read the following statements and understand their meaning. Please read carefully.

WARNING

Warning is used to indicate the presence of a hazard that *can* cause severe personal injury, death, or substantial property damage if the warning is ignored.

CAUTION

Caution is used to indicate the presence of a hazard that *will* or *can* cause *minor* personal injury or property damage if the caution is ignored.

NOTE

Note is used to notify people of installation, operation, or maintenance information that is important but not hazard-related.

For Your Safety!

These precautions should be followed at all times. Failure to follow these precautions could result in injury to yourself and others.

	<p> WARNING</p> <p>Burn Hazard. Do not touch hot food, liquid or heating surfaces while equipment is heating or operating.</p>
<p>Hot surfaces and food can burn skin. Allow the hot surfaces to cool before handling. Do not drop or spill water onto the cooking surface as it can spray or splatter.</p>	

	<p> WARNING</p> <p>Electrical Shock Hazard. Keep water and other liquids from entering the inside of the equipment. Liquid inside the equipment could cause an electrical shock.</p>
<p>Do not spray water or cleaning products. Liquid could contact the electrical components and cause a short circuit or an electrical shock. Do not use equipment if power cord is damaged or has been modified</p>	

To reduce risk of injury or damage to the equipment:

- Use only grounded electrical outlets matching the nameplate rated voltage.
- Use equipment in a flat, level position.
- Do not use an extension cord with this equipment. Do not plug this equipment into a power strip or multi-outlet power cord.
- Turn off and unplug equipment before cleaning or moving.
- Do not spray controls or outside of equipment with liquids or cleaning agents.
- Keep equipment and power cord away from open flames, electric burners or excessive heat.
- Do not operate unattended.
- Do not operate if equipment has been damaged or is malfunctioning in any way.

FUNCTION AND PURPOSE

This equipment is designed for illuminated display of food products at temperatures between 85°F (29°C) and 175°F (66°C). This equipment is intended and designed to keep food at proper serving temperatures. Food must be prepared and placed in display cabinets at proper serving temperatures. Heated display cabinets are not intended or designed to cook raw food or to reheat prepared food. It is not intended for household, industrial, or laboratory use.

UNPACKING THE EQUIPMENT AND INITIAL SETUP

When no longer needed, dispose of all packaging and materials in an environmentally responsible manner.

1. Remove all packing material and tape, as well as any protective plastic from the equipment.
2. Remove bolts that secure the equipment to the pallet.
3. Clean any glue residue left over from the plastic or tape.
4. Installing doors: The longer doors are for the front or sloped side and the shorter doors are for the back or straight side. The doors are fitted with the handles facing toward the outside of the unit. Place the top of the door into the top track and slide the door up to clear, and then lower it into the bottom track.
5. Installing the shelves: Place the uprights into the provided slots making sure that the longer tab is on top and the flat sides face inward. Place the shelf supports at the desired locations and position the shelf on these supports.

NOTE:

The shelf supports and shelves can be positioned level or sloping forward for improved presentation.

6. Plug the unit into a properly grounded electrical supply matching the nameplate rating. Damage to the unit can occur if incorrect power is supplied to unit.

FEATURES AND CONTROLS

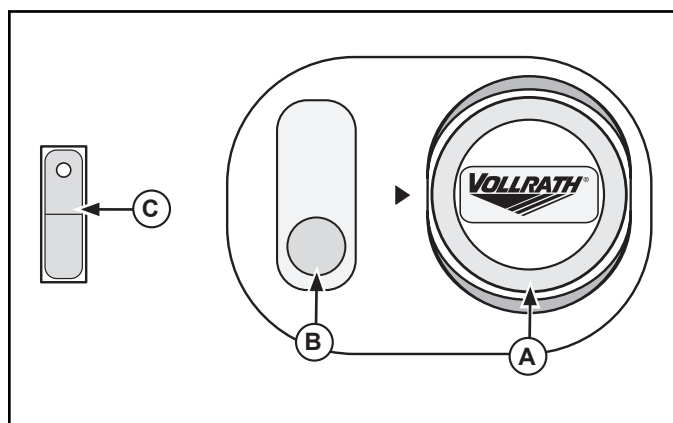


Figure 1. Controls (located on the back of the display cabinet).

- (A) THERMOSTAT CONTROL dial. Used to set or adjust the temperature. The "0" position is off.
- (B) PILOT LIGHT. This light indicating that the element is heating. Once the temperature has been reached the light will go out. Unit will continue to maintain heat and temperature with light cycling on and off. This is not an "ON/OFF" light.

- Ⓒ LIGHT SWITCH. Switches the lights "ON" or "OFF".
- Ⓓ WATER PAN (not shown). When filled with water will add humidity to display.

OPERATION

Before using this equipment clean as described in the **CLEANING** section of this document.

Before placing food product into this equipment operate to desired temperature for approximately 15 minutes. Food must be prepared and placed in display cabinets at proper serving temperatures. This equipment is not intended or designed to heat or cook food. Regularly check the food temperature.

In areas of high humidity it may be necessary to open rear doors slightly to help eliminate condensation.

NOTE:

Monitor food temperature closely for food safety. The United States Public Health Service recommends that hot food be held at a minimum of 140 °F (60 °C) to help prevent bacteria growth.

1. Adjust the thermostat control (A) to the desired temperature; the pilot light (B) indicates when the elements are energized. See Figure 1.
2. Switch the light switch (C) to the "ON" position if desired.
3. Water may be added to the water pan to add humidity if desired. Monitor the water level during operation.
4. Turn the thermostat control (A) to lowest setting, turn the light switch (C) to the "OFF" position and unplug unit. When removing hot food containers from unit use gloves, mitts or pot holders to protect hands.
5. If water pan is used water to cool completely and dispose of the water.
6. Follow the **CLEANING** section of this manual.

TROUBLESHOOTING

Problem	It might be caused by	Course of Action
Condensation (moisture) on the glass.	Combination of heat and moisture is high.	Open doors slightly.
No power to unit.	Faulty outlet.	Have outlet replaced by qualified personal.
	Circuit breaker tripped.	Reset the circuit breaker.
Unit not heating.	Faulty heating element.	Have unit serviced by qualified personal.
Pilot Light does not come on when the temperature control is turned up.	Unit is not plugged in.	Plug unit in.
	Pilot Light malfunction.	Replace Pilot Light.
Light(s) does not work.	Defective or faulty starter(s).	Replace starter(s).
Light(s) does not work.	Defective or faulty ballast(s).	Replace ballast(s).
Light(s) does not work.	Defective or faulty light(s).	Replace light(s).
Light(s) does not work.	Loose connection or defective socket.	Tighten connection or replace socket.

CLEANING

To maintain the appearance and increase the service life, clean your equipment daily.

NOTE:

Do not use cleaning products containing aggressive chemicals, acids, or that contain chlorine.

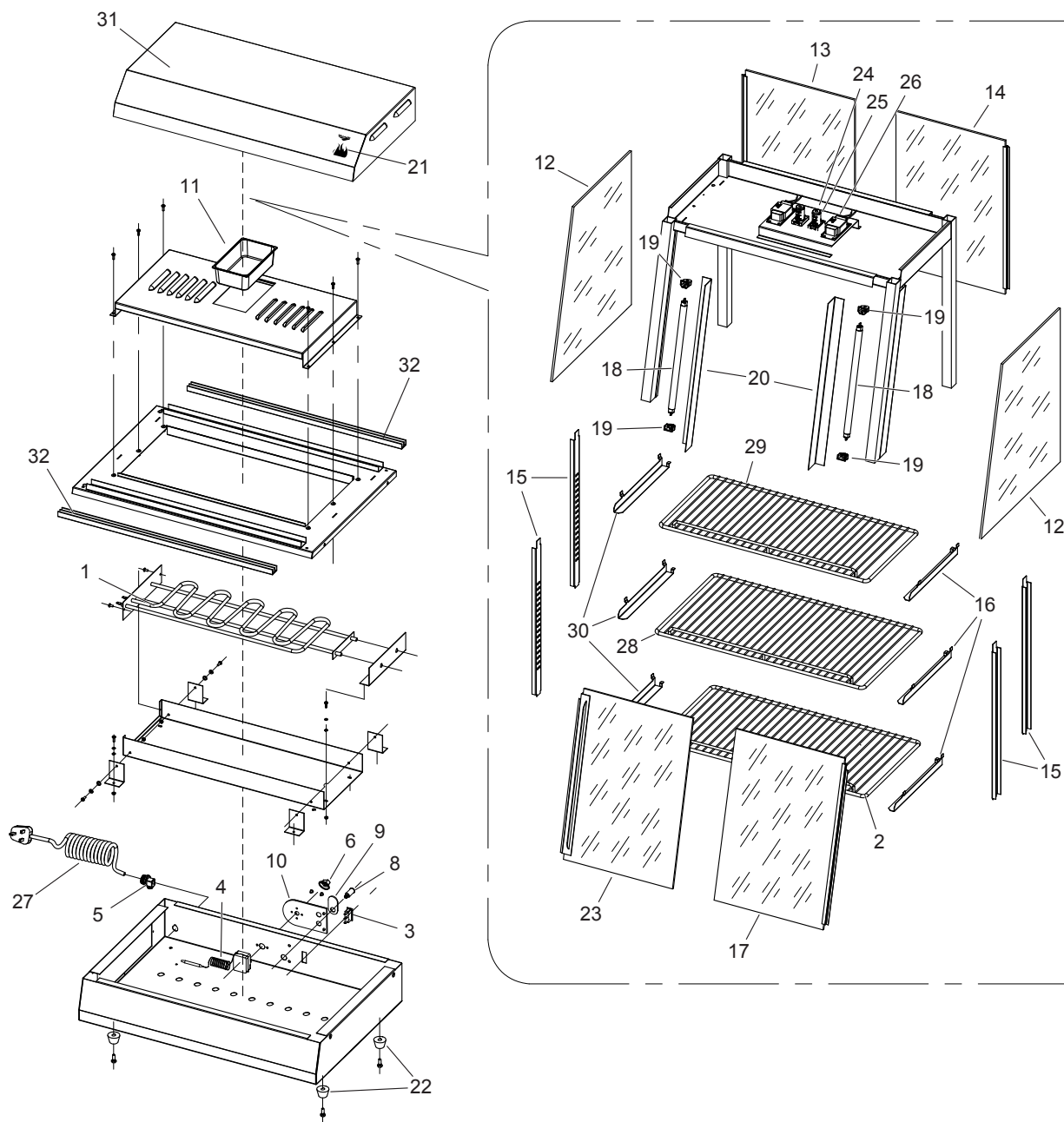
NOTE:

Do not immerse the cord, plug or equipment in water or any other liquid. Do not use a hose to clean this equipment.

1. Unplug the equipment.
2. Allow the equipment to cool completely before cleaning.
3. Using a damp cloth, sponge dipped in soapy water to clean the equipment.
4. A high quality non-toxic glass cleaner may be used to clean the components of the unit.
5. Completely dry all surfaces of the equipment to preserve the finish.

EXPLODED VIEW - 26" HOT FOOD MERCHANDISER, MODEL ~ 40733

ENGLISH

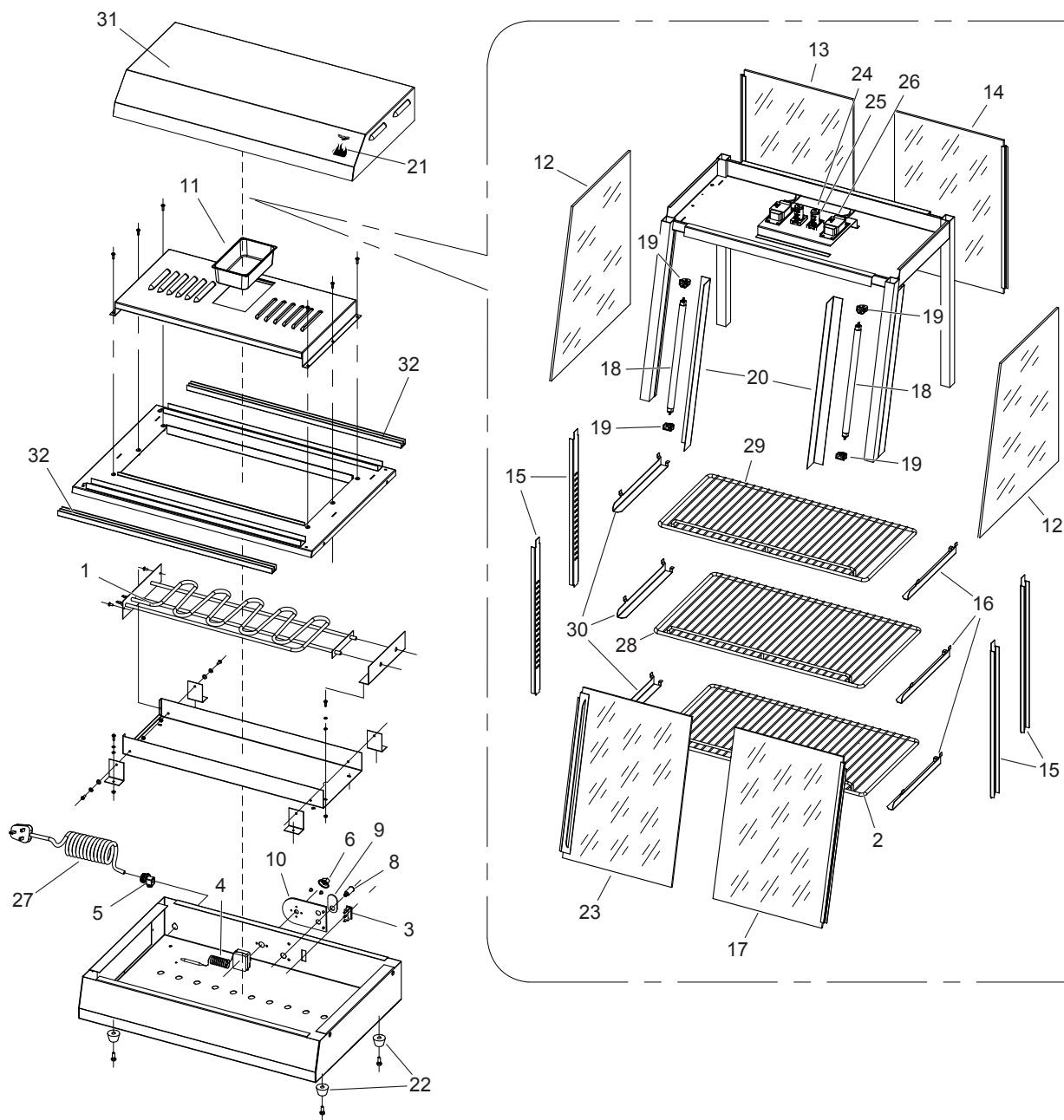


SPARE PARTS LIST - 26" HOT FOOD MERCHANDISER, MODEL ~ 40733

Callout	Part Number	Description
1	XFMA7117	ELEMENT, 1500W, 120V
2	XFMA7302	SHELF, LARGE (32 1/4" x 14")
3	XWMA1004	ROCKER SWITCH, ON/OFF
4	XFMA7004	THERMOSTAT
5	XAA0012	CABLE RESTRAINT
6	XFWW2004	CONTROL KNOB (ATTACHED TO T-STAT POST)
6	XFMA7008	CONTROL KNOB (VOLLRATH BLUE)
7	XFMA7007	CONTROL KNOB OUTER RING (TEMP GRADUATIONS 85-175)
8	XAA0011	PILOT LIGHT
9	N/A	PILOT LIGHT FASCIA
10	XAA0007	BLACK PLASTIC D SHAPE FASCIA
10	XAA0009	BLUE VOLLRATH FASCIA
11	XFMA7011	WATER PAN
12	XFMA7014	SIDE GLASS, 17-1/4" Tall (Anvil Models)
12	XFMA7013	SIDE GLASS, 15-5/8" Tall (Vollrath Models)
13	XFMA7503	GLASS REAR RIGHT, 17-1/8" Tall (Anvil Models)
13	XFMA7521	GLASS REAR RIGHT, 15-1/2" Tall (Vollrath Models)
14	XFMA7506	GLASS REAR LEFT, 17-1/8" Tall (Anvil Models)
14	XFMA7522	GLASS REAR LEFT, 15-1/2" Tall (Vollrath Models)
15	XFMA7201	VERTICAL SHELF SUPPORT (Anvil Models)
15	XFMA7525	VERTICAL SHELF SUPPORT (Vollrath Models)
16	XFMA7016	HORIZONTAL SHELF SUPPORT, LEFT SIDE
17	XFMA7509	GLASS FRONT LEFT, 17-3/8" Tall (Anvil Models)
17	XFMA7523	GLASS FRONT LEFT, 15-3/4" Tall (Vollrath Models)
18	XFMA7018	LIGHT BULB
19	XFMA7019	LIGHT BULB CONNECTOR(ANVIL UNITS)
19	XFMA7020	LIGHT BULB CONNECTOR (VOLLRATH UNITS)
20	XFMA7027	PLASTIC LIGHT BULB COVER
21	XAA0008	ANVIL STICK ON BADGE
22	XFFA8011	RUBBER FOOT
23	XFMA7512	GLASS FRONT RIGHT, 17-3/8" Tall (Anvil Models)
23	XFMA7524	GLASS FRONT RIGHT, 15-3/4" Tall (Vollrath Models)
24	XFMA7024	BALLAST, 11 Watts
25	N/A	STARTER CONNECTOR BLOCK
26	XFMA7026	STARTER
27	XAA0006	POWER CORD, 120V, WITH NEMA5-15P PLUG
28	XFMA7303	SHELF MEDIUM
29	XFMA7304	SHELF SMALL
30	XFMA7017	HORIZONTAL SHELF SUPPORT, RIGHT SIDE
31	XFMA7513	TOP COVER
32	XFMA7516	LOWER DOOR TRACK (CUT TO FIT)
	XFMA7001	LOCKING BAR

EXPLODED VIEW - 36" HOT FOOD MERCHANDISER, MODEL ~ 40734

ENGLISH

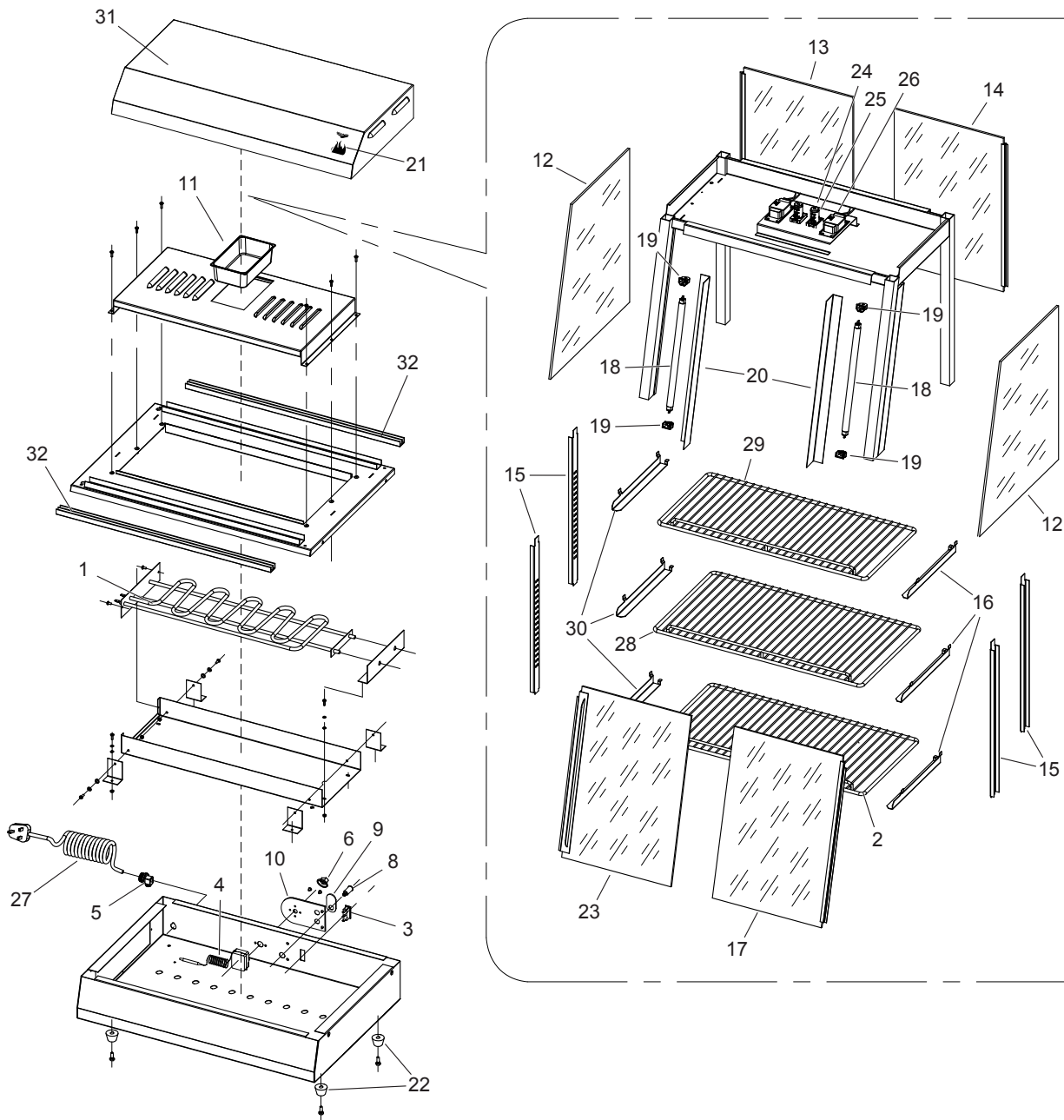


SPARE PARTS LIST - 36" HOT FOOD MERCHANDISER, MODEL ~ 40734

Callout	Part Number	Description
1	XFMA7114	ELEMENT, 1500W, 120V
2	XFMA7202	SHELF, LARGE
3	XWMA1004	ROCKER SWITCH, ON/OFF
4	XFMA7004	THERMOSTAT
5	XAA0012	CABLE RESTRAINT
6	XFWW2004	CONTROL KNOB (ATTACHED TO T-STAT POST)
6	XFMA7008	CONTROL KNOB (VOLLRATH BLUE)
7	XFMA7007	CONTROL KNOB OUTER RING (TEMP GRADUATIONS 85-175)
8	XAA0011	PILOT LIGHT
9	N/A	PILOT LIGHT FASCIA
10	XAA0007	BLACK PLASTIC D SHAPE FASCIA
10	XAA0009	BLUE VOLLRATH FASCIA
11	XFMA7011	WATER PAN
12	XFMA7013	SIDE GLASS, 15-5/8" Tall (Anvil and Vollrath Models)
13	XFMA7502	GLASS REAR RIGHT, 15-1/2" Tall (Anvil and Vollrath Models)
14	XFMA7505	GLASS REAR LEFT, 15-1/2" Tall (Anvil and Vollrath Models)
15	XFMA7301	VERTICAL SHELF SUPPORT (Anvil and Vollrath Models)
16	XFMA7016	HORIZONTAL SHELF SUPPORT, LEFT SIDE
17	XFMA7508	GLASS FRONT LEFT, 15-3/4" Tall (Anvil and Vollrath Models)
18	XFMA7018	LIGHT BULB
19	XFMA7019	LIGHT BULB CONNECTOR(ANVIL UNITS)
19	XFMA7020	LIGHT BULB CONNECTOR(VOLLRATH UNITS)
20	XFMA7027	PLASTIC LIGHT BULB COVER
21	XAA0008	VOLLRATH DECAL
22	XFFA8011	RUBBER FOOT
23	XFMA7511	GLASS FRONT RIGHT, 15-3/4" Tall (Vollrath Models)
24	XFMA7024	BALLAST, 11 Watts
25	N/A	STARTER CONNECTOR BLOCK
26	XFMA7026	STARTER
27	XAA0006	POWER CORD, 120V, NEMA 5-15P PLUG
28	XFMA7303	SHELF MEDIUM
29	XFMA7304	SHELF SMALL
30	XFMA7017	HORIZONTAL SHELF SUPPORT, RIGHT SIDE
31	XFMA7514	TOP COVER
32	XFMA7516	LOWER DOOR TRACK (CUT TO FIT)
	XFMA7002	LOCKING BAR

EXPLODED VIEW - 48" HOT FOOD MERCHANDISER, MODEL ~ 40735

ENGLISH



SPARE PARTS LIST - 48" HOT FOOD MERCHANDISER, MODEL ~ 40735

Callout	Part Number	Description
1	XFMA7113	ELEMENT, 1500W, 120V
2	XFMA7102	SHELF, LARGE
3	XWMA1004	ROCKER SWITCH, ON/OFF
4	XFMA7004	THERMOSTAT
5	XAA0012	CABLE RESTRAINT
6	XFWW2004	CONTROL KNOB (ATTACHED TO T-STAT POST)
6	XFMA7008	CONTROL KNOB (VOLLRATH BLUE)
7	XFMA7007	CONTROL KNOB OUTER RING (TEMP GRADUATIONS 85-175)
8	XAA0011	PILOT LIGHT
9	N/A	PILOT LIGHT FASCIA
10	XAA0007	BLACK PLASTIC D SHAPE FASCIA
10	XAA0009	BLUE VOLLRATH FASCIA
11	XFMA7011	WATER PAN
12	XFMA7012	SIDE GLASS, 23-1/4" Tall (Anvil Models)
12	XFMA7013	SIDE GLASS, 15-5/8" Tall (Vollrath Models)
13	XFMA7501	GLASS REAR RIGHT, 23-1/4" Tall (Anvil Models)
13	XFMA7541	GLASS REAR RIGHT, 15-1/2" Tall (Vollrath Models)
14	XFMA7504	GLASS REAR LEFT, 23-1/4" Tall (Anvil Models)
14	XFMA7542	GLASS REAR LEFT, 15-1/2" Tall (Vollrath Models)
15	XFMA7401	VERTICAL SHELF SUPPORT (Anvil Models)
15	XFMA7301	VERTICAL SHELF SUPPORT (Vollrath Models)
16	XFMA7017	HORIZONTAL SHELF SUPPORT, RIGHT SIDE
16	XFMA7016	HORIZONTAL SHELF SUPPORT, LEFT SIDE
17	XFMA7507	GLASS FRONT LEFT, 23-5/8" Tall (Anvil Models)
17	XFMA7543	GLASS FRONT LEFT, 15-3/4" Tall (Vollrath Models)
18	XFMA7018	LIGHT BULB
19	XFMA7019	LIGHT BULB CONNECTOR(ANVIL UNITS)
19	XFMA7020	LIGHT BULB CONNECTOR(VOLLRATH UNITS)
20	XFMA7027	PLASTIC LIGHT BULB COVER
21	XAA0008	ANVIL STICK ON BADGE
22	XFFA8011	RUBBER FOOT
23	XFMA7510	GLASS FRONT RIGHT, 23-5/8" Tall (Anvil Models)
23	XFMA7544	GLASS FRONT RIGHT, 15-3/4" Tall (Vollrath Models)
24	XFMA7024	BALLAST, 11 Watts
25	N/A	STARTER CONNECTOR BLOCK
26	XFMA7026	STARTER
27	XAA0006	POWER CORD, 120V, WITH NEMA5-15P PLUG
28	XFMA7103	SHELF MEDIUM
29	XFMA7104	SHELF SMALL
30	XFMA7017	HORIZONTAL SHELF SUPPORT, RIGHT SIDE
31	XFMA7515	TOP COVER, GRAY (Anvil Models)
31	XFMA7555	TOP COVER, DARK BROWN (Vollrath Models)
32	XFMA7516	LOWER DOOR TRACK (CUT TO FIT)
	XFMA7003	LOCKING BAR

SERVICE AND REPAIR

The only user serviceable part for this appliance is the light bulb. To avoid serious injury or damage, never attempt to repair the equipment or replace a damaged power cord yourself. Do not send equipment directly to the Vollrath Company. Please contact the qualified professional repair service listed below.

VOLLRATH Technical Service • 1-800-628-0832

• Email: techservicereps@vollrathco.com

WARRANTY STATEMENT FOR THE VOLLRATH Co. L.L.C.

This warranty does not apply to products purchased for personal, family or household use, and The Vollrath Company LLC does not offer a written warranty to purchasers for such uses.

The Vollrath Company LLC warrants each of its products listed below against defects in materials and workmanship for the applicable period provided below. All other products manufactured or distributed by The Vollrath Company LLC are warranted against defects in materials and workmanship for a period of one year. In all cases, the warranty runs from the date of the end user's original purchase found on the receipt.

- Replacement parts – The warranty period is 90 days.
- Glass, Breath Guard Glass and Light Bulbs are not covered by warranty.

For complete warranty information, product registration and new product announcement, visit www.vollrath.com.



www.vollrath.com

The Vollrath Company, L.L.C.
1236 North 18th Street
Sheboygan, Wisconsin
53081-3201 USA
Main Tel: 920-457-4851
Main Fax: 800-752-5620 or
920-459-6573

US Service Tel: 800-628-0832
Canada Service Tel: 800-695-8560
Service Fax: 920-459-5462

Vollrath Europe BV
Beneluxbaan 7
5121 AD RIJEN
The Netherlands
+31161870005

Vollrath of China
Vollrath Shanghai Trading Limited
29D, 855 South Pu Dong Road
Shanghai, China 200120
Tel: 86-21-50589580

Vollrath de Mexico S. de R.L. de C.V.
Periferico Sur Edificio 2-C
Col. Santa Maria Tequepexpan
45601 Tlaquepaque, Jalisco Mexico
Tel: (52) 333-133-6767
Tel: (52) 333-133-6769
Fax: (52) 333-133-6768