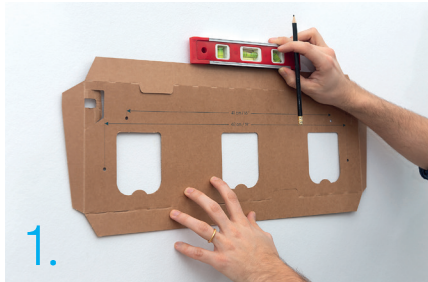
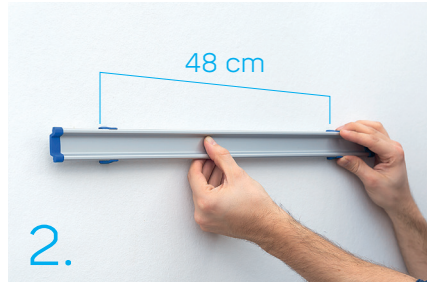


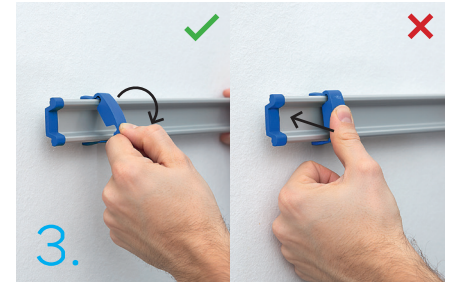
Assembly



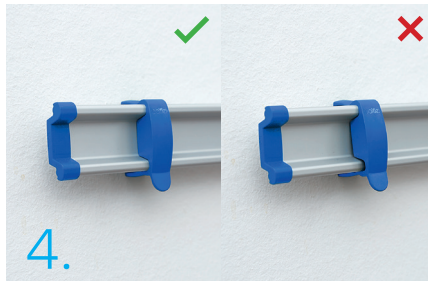
Position the template against the wall. Use a spirit level. Mark the wall with a pencil through the holes in the template.



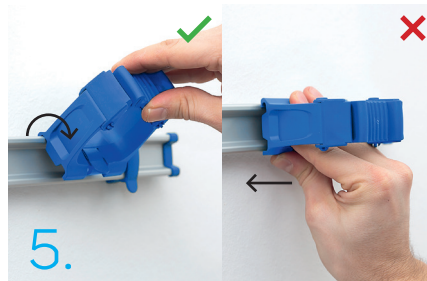
Secure the plastic mounting brackets on each of the marked points on the wall. Align the rail to the brackets.



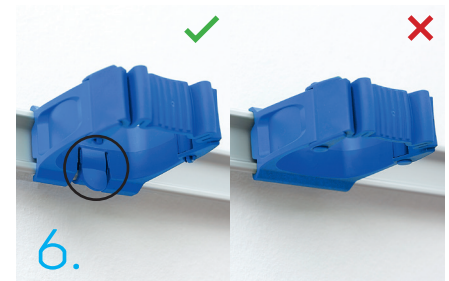
Lock the lid by hooking the top piece with the release tab facing down. Push downwards. Error when pressure mounting



Lock the lid at the bottom. A click sound is heard when the lid is properly shut. Error if the lid is not over the heel.

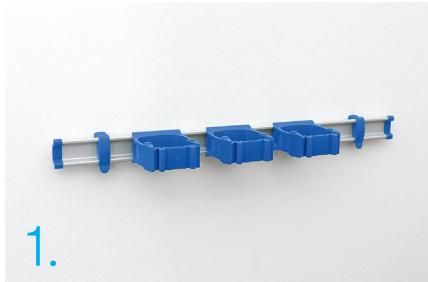


Mount the holder by hooking the top in a 45° angle. Push downwards until a click sound is heard. Error when pressure mounting.



The release tab shall face down. Error when facing upwards.

Dismantling



Remove all attachments before releasing the lids.



All lids must be loosened before removing the rail.

For more instructions on how to install Toolflex One, please visit toolflex.com/professional/

If you have any questions, please contact info@toolflex.com

toolflex
professional