



Assembly Instructions

U.S. Patent #5,715,992, #5,909,841, #6,196,452, #6,290,124, #7,707,309 B2, #2436006, and Foreign Patent #86237 (CH), #HK1016944 and other U.S. and foreign patents pending.

Step 1

Push in sides to **POP** open box and automatically inflate inner bag.

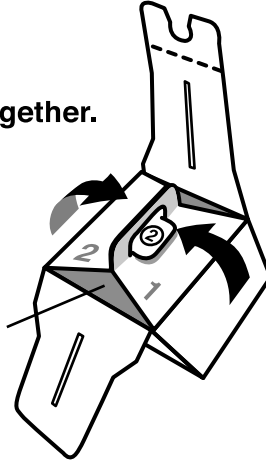


Note: A bag of caps is included in box.

Step 2

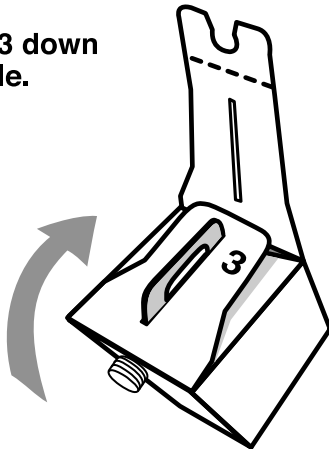
Fold flaps 1 & 2 together. Place tab 2 over 1.

Bag is automatically inflated.



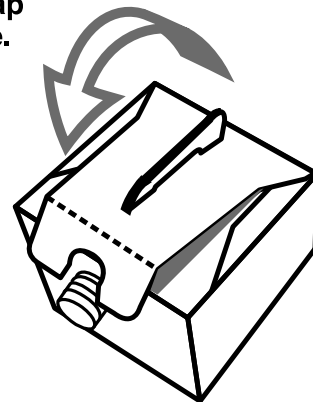
Step 3

Push flap 3 down over handle.



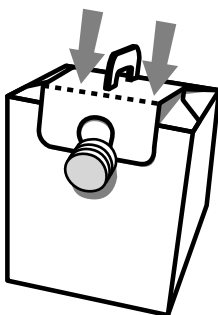
Step 4

Push top flap over handle.



Step 5

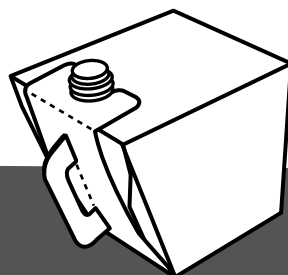
Slide front tabs behind last ring in spout.



Step 6

FILL

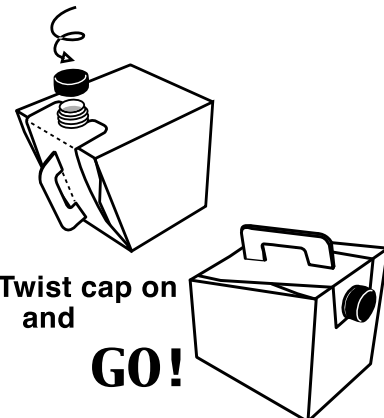
Set on sturdy surface and fill to the bottom of the spout. (A funnel is recommended to avoid spills.)



Step 7

Twist cap on and

GO!



15.DEC.2011

300-7175



1325 S. Cicero Ave., Cicero, IL 60804-1404
708.652.5600 ■ Fax 708.780.6975 ■ www.LBPmfg.com