

Shortening Shuttle® Mini

SS-645

Replacement Parts

Long Hose Assm.	914-H2
Top Handle.....	645-01
Double Wheel Kit.....	645-02
Red Pump.....	645-03
Stainless Steel Pump.....	645-04
Basket Strainer	645-05
Safety Labels Kit.....	645-06
Crank Handle Assembly	645-07
Safety Gloves,heat resistant.....	914-207
Shuttle Wand	SS-WAND



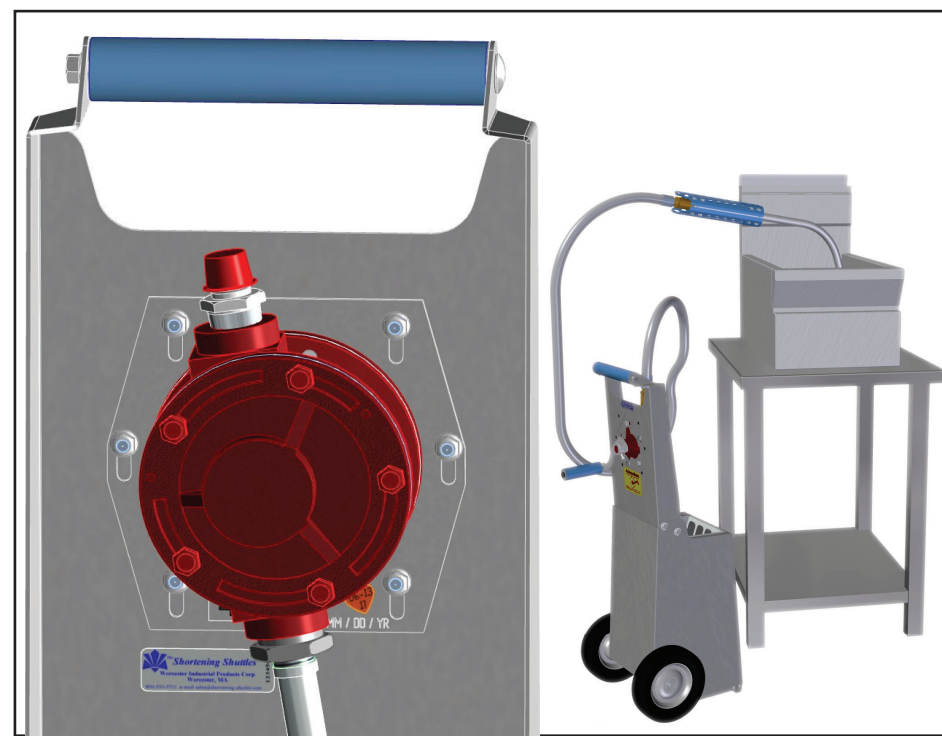
Operating Precautions

- ☞ Caution: Debris must be kept out of the pump when not in use. Make sure that the basket strainer is always in place.
- ☞ **Warning:** *Do Not* use excessive force to rotate pump. Excessive force will damage pump.
- ☞ **Warning:** If water is pumped through the unit, the pump will be damaged by subsequent rust deposits. If water is accidentally run through the pump, then pump two(2) to four(4) cups of clear warm oil (80 to 90° F) through it to clear out the water and coat the internal parts with oil.
- ☞ Cleaning: Rinse outside only with hot water and a mild detergent (Do Not use any caustic cleaning agents). Clean the inside by wiping with a cloth or paper towels. Do Not put water inside the *Shortening Shuttle® Mini*.
- ☞ **Never** leave water in the unit. ☞ **Never** mix hot oil with water in the unit.

The Shortening Shuttle® Mini

Red Pump Replacement

Part # 645-03



- ◆ Note: Before beginning assembly inspect all included parts to be sure there is **no** shipping damage. Contact the shipper immediately if there is any damage.

DISASSEMBLING THE PUMP VOIDS WARRANTY

Shortening Shuttle® Mini Replacement Red Pump

Parts List for 645-03:

- 1 pc Red Pump mounted on Hex plate
- 6 pc 1/4-20" Flange Nuts
- 1 pc Crank Handle Assembly

Safety Precautions

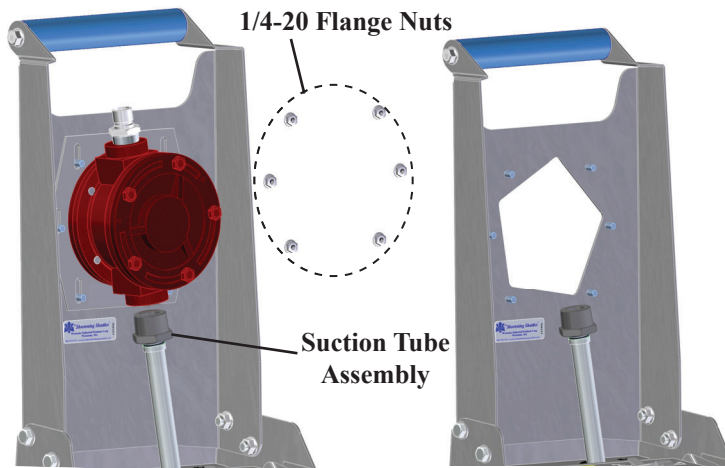
Please read carefully and follow all safety precautions to ensure maximum safety.

- ☞ Maximum temperature the tank of the Shuttle Pump will safely withstand: 150°F
- ☞ **Warning:** You MUST wear proper clothing when operating this unit. We recommend using heat resistant Safety Gloves. See OSHA guidelines for handling hot oil.
- ☞ **Caution:** Skin burns at 120° F. For maximum safety use when oil is below 120° F

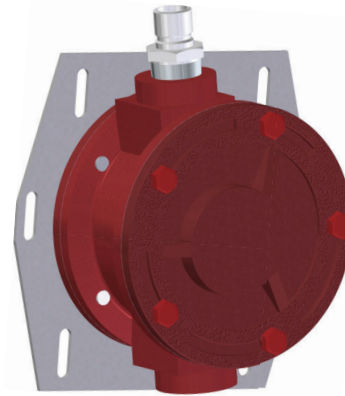
Existing Pump Removal

Start by removing the Crank Handle Assembly by loosening the bolt on the Crank Handle enough to allow it to be lifted off the pump.

Remove the long hose and SS-Wand by releasing the quick disconnect from the pump. Remove the six(6) 1/4-20 flange nuts holding the mounting plate to the Handle Assembly. Carefully un-screw the Suction Tube Assembly while lifting Red Pump Assembly (The Suction Tube Assembly rests on the bottom of the tank.). Carefully remove the old pump assembly from the Handle Assembly.



New Pump Assembly Installation



Carefully install the new Red Pump Assembly onto the six(6) 1/4-20 studs in the Handle Assembly. Very loosely install the six(6) 1/4-20 flange nuts onto the studs.

Re-install the Suction Tube Assembly into the new Red Pump Assembly.

Firmly tighten the six(6) 1/4-20 flange nuts then firmly tighten the Suction Tube Assembly.

Re-install the Crank Handle Assembly

Attach the pump handle onto the Pump Shaft as shown in *figure 1*. Firmly tighten the bolt (**caution: overtightening will break the handle**) into the hole in the pump shaft to secure the handle to the pump shaft.

