



# ATTENTION



**FOR QUESTIONS, MISSING PARTS OR WARRANTY,  
CONTACT SNAP-LOC NOT STORE OF PURCHASE.**



1.800.798.4521



CONTACT@SNAPLOC.COM



WWW.SNAPLOC.COM



SNAP-LOC CARGO CONTROL SYSTEMS  
5670 La Costa Canyon Ct. Las Vegas, Nevada 89139

## CARE AND MAINTENANCE FOR PUSH CART AND ACCESSORIES

### SNAP-LOC EASY MOVE PUSH CART DOLLY

**There isn't much to keeping the Cart in great working condition for years, but here are some tips.**

1. Never exceed maximum weight capacity of 500 lbs. If not sure what the weight capacity is of the item contact Snap-Loc.
2. Evenly distribute cargo so all 4 casters share weight equally. Too much weight on one caster may damage it.
3. Gently place cargo on Cart. Do not let weight slam down on surface or damage may occur.
4. To keep casters in good working condition do not submerge in water and try to avoid using in sand.
5. After periods of use the Caster brake mechanism may not engage well. Apply a very small amount of WD-40 lubricant just on the mechanical metal and avoid lubricant contact with the surface.
6. Similar to vehicle tires, replace worn out casters when needed. Casters can be purchased at [www.snaploc.com](http://www.snaploc.com).
7. Chips, color fading and minor cracks to the Cart plastic may happen. If Cart still works safely, keep using it.
8. Stow away in a dry place away from direct sunlight.

### PUSH BAR

**Bar is made from steel but are not indestructible. Here are some ways to keep them in good shape.**

1. Bars will push Cart's max weight capacity (500 lbs.) on a flat smooth surface. On hills or uneven surfaces do not exceed a max push torque of 125 pounds.
2. When using as a Dolly and Push Cart, be sure to maintain evenly distributed weight balance as Cart can tip over with uneven load.
3. Replacement parts can be purchased at [www.snaploc.com](http://www.snaploc.com) or by call Snap-Loc at 1-800-798-4521.
4. Chips, color fading and minor surface rust may happen. If Bars still work safely, keep using them.
5. Stow away in a dry place away from direct sunlight.

### E-TRACK DOLLY STRAP

**Straps tend to get destroyed faster than most other components. Here are some ways to help prevent that.**

1. We recommend Snap-Loc E-Track Straps with Cam for the Cart. They are quick to use and less prone to scratching cargo.
2. Make sure nothing touches the E-Fitting release lever as this may cause strap to come loose.
3. If using Ratchet straps do not over tighten or damage may occur to Cart.
4. After periods of use the Ratchet mechanism may not spin well. Apply a very small amount of WD-40 lubricant just on the mechanical metal and avoid lubricant contact with the surface.
5. Do not expose straps to sharp edges, acids, chemicals, vibrations and things that may cause damage to fabric webbing.
6. Secure left over strap end to keep it from getting caught on the casters or other objects when in motion.
7. Replace worn out or damaged straps. Visit [www.snaploc.com](http://www.snaploc.com)
8. Color fading may happen. If strap still works safely, keep using it.
9. Stow away in a dry place away from direct sunlight.

### "SNAP-LOC E-TRACK SINGLES" AND ACCESSORIES

**There are a lot of great accessories available with the Snap-Loc System of products that are not written about here. Contact Snap-Loc or visit [www.snaploc.com](http://www.snaploc.com) for more detailed information.**

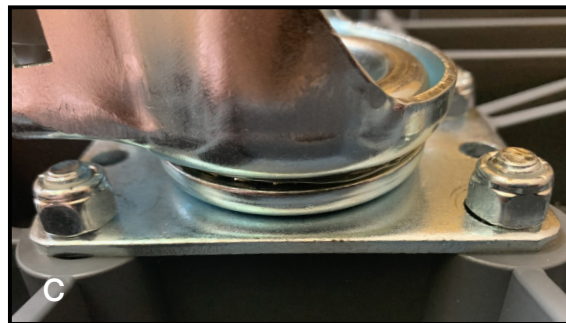
1. "E-Track Single" strap anchors are rated at 250 lb. Break Strength when installed on push cart dolly (based on plastic rating).
2. "E-Track Singles" can be used most anywhere. However it is your responsibility to determine suitability for any particular use.
3. "E-Track Singles" are only as strong as stated when what they are fastened to is equally as strong.
4. Most Snap-Loc Accessories have the weight rating stamped into them, but if not, contact Snap-Loc for details.
5. If unsure of how to use or care for any of our products contact Snap-Loc immediately at [contact@snaploc.com](mailto:contact@snaploc.com) or 1-800-798-4521.
6. Chips, color fading and minor surface rust may happen. If "E-Track Singles" and accessories still work safely, keep using them. If you feel at any time the structural integrity of the part has been compromised discontinue use and replace with new parts.

# SNAP-LOC EASY MOVE PUSH CART DOLLY

## CASTER INSTALLATION

**Swivel Casters with brakes can be installed in any of the 4 corners you prefer, but we typically put the Casters with brakes on one end.**

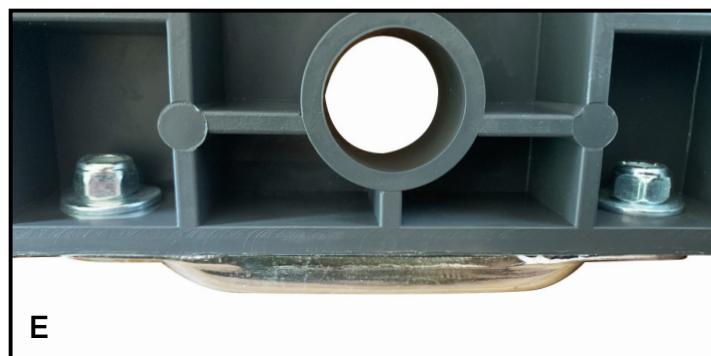
- A. First, install hexagon head bolts fully into receiver holes.
- B. Insert caster over bolts. With the curved part of the nut facing out, use fingers to start installing nuts.
- C. With your own 1/2 inch wrench finish tightening nuts until there are 1 or 2 bolt threads showing past the top of the nut.  
**Do not over-tighten!**



## E-TRACK SINGLE INSTALLATION

**If cart came with optional E-Track Single strap anchors, follow these instructions for installing each Single.**

- D. First, turn the Cart Body upside down. Then install 2 carriage bolts into the E-Track Single and insert into pre-drilled holes on Cart.
- E. Install one washer over each bolt. Install nut on bolt with fingers, then with your own 1/2 inch wrench finish tightening nuts until they are tight.



## E-TRACK STRAPS AND E-TRACK ACCESSORIES

**All Snap-Loc items are engineered to coordinate with industry standard E-Track and E-Track accessories. However, we recommend always using Snap-Loc products with other Snap-Loc products for a guaranteed fit.**

- F. Pull back on the E-Fitting lever and insert as shown into "Snap-Loc E-Track Singles" on Cart body.
- G. Insert other end of E-Fitting fully into the "E-Track Single" as shown.
- H. Release lever and wiggle until securely clicked in place.
- I. To remove pull back lever on E-Fitting and disengage.

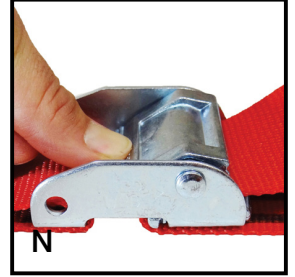
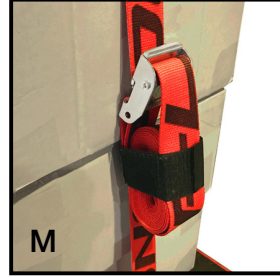
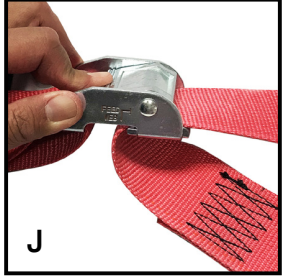




## E-TRACK STRAP WITH CAM

Cam straps are recommended for use with the Cart for several reasons; They hold securely, are less prone to scratching cargo, can't be overtightened causing damage to Cart, are faster and easier to use than Ratchets.

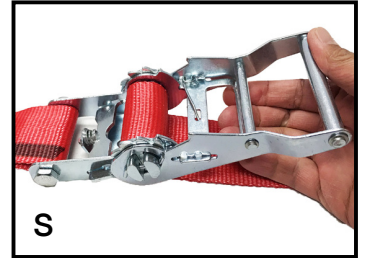
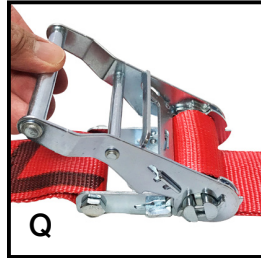
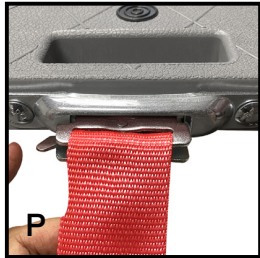
- J. Push down on Cam buckle lever to adjust strap length in and out of Cam until it fits over cargo.
- K. Connect both ends of strap securely to "E-Track Singles" (reference E-Track Straps and E-Track Accessories).
- L. After connected to "E-Track Singles" pull on loose loop end of strap until firmly snug against cargo.
- M. Use Hook & Loop fastener (a.k.a. Velcro) to secure excess end of strap to keep it from getting caught on the casters or other objects when in motion.
- N. To loosen strap push down on Cam buckle lever and pull on strap until loose.



## E-TRACK STRAP WITH RATCHET

Ratchet straps can be used on Cart, but be careful to not overtighten causing damage to Cart.

- O. Adjust strap length through Ratchet buckle until it fits over cargo.
- P. Connect both ends of strap securely to "E-Track Singles" (reference E-Track Straps and E-Track Accessories).
- Q. Begin moving ratchet handle up and down until there is a minimum of two full revolutions of strap wrapped around the center pivot.  
If less than two full revolutions of strap the ratchet will not hold properly.
- R. Use Hook & Loop fastener (a.k.a. Velcro) to secure excess end of strap to keep it from getting caught on the casters or other objects when in motion.
- S. To loosen pull back on the Ratchet release lever, open handle 180 degrees and pull on strap until loose.



## BRAKE CASTERS

Brakes are designed to grip the wheel, but are not designed to lock the wheel and will slip with heavy loads.

- D. To engage the brake, push the "ON" side of the caster brake pedal all the way down.
- E. To release the brake, push the "OFF" side of the caster brake pedal all the way down.



## WARRANTY

**If product becomes damaged and is structurally unsafe immediately discontinue use.**

**For questions or return authorizations please email [contact@snaploc.com](mailto:contact@snaploc.com) or call 1-800-798-4521**

1. Snap-Loc guarantees our products to be free from defects in material and workmanship for a period of 90 days from date you received the product.
2. No returns will be accepted without pre-approved authorization.
3. No returns will be accepted more than 30 days after authorization to return has been issued.
4. During the warranty period Snap-Loc will at its own discretion repair, replace parts or replace in whole products found to be defective in material or workmanship. Installation labor on replacement parts excluded.
5. Pre-approved return shipping will be paid for by Snap-Loc if in the continental United States. Some restrictions apply.
6. Here are some things not covered under warranty; exceeding weight limit, misuse, accident, alteration, improper installation, over tightening, scratching, chipping, discoloring, minor plastic cracks that don't affect usability, use in extreme freezing weather or extreme heat, water submersion, exposure to corrosive chemicals, unauthorized repair and other similar negligence.
7. Snap-Loc will not be liable for direct or indirect consequential damages whatsoever.
8. The literature included with this product has been written for your safety. If you do not accept the terms and conditions herein do not use this product and return it within 7 days after purchase. By keeping this product you are agreeing to our terms and conditions.
9. This Manual was created June 2021 please check [www.snaploc.com](http://www.snaploc.com) for updates thereafter.

