

# SOMERSET

## SCS-150 Cheese Shredder OPERATIONS MANUAL



### WARNING

DO NOT CLEAN OR SERVICE THE MACHINE WITHOUT PRESSING THE RED BUTTON AND UNPLUGGING THE ELECTRICAL CORD FROM THE POWER SUPPLY. KEEP YOUR FINGERS AND HANDS AWAY FROM THE INFEED OPENING AT ALL TIMES AND WHEN OPERATING OR SERVICING THE MACHINE.

SOMERSET INDUSTRIES  
137 PHOENIX AVE • LOWELL, MA 01852 • USA • +1- 978-667-3355  
Email: [somerset@smrset.com](mailto:somerset@smrset.com) Web: [www.smrset.com](http://www.smrset.com)

L020-045  
REV E  
FEB '25

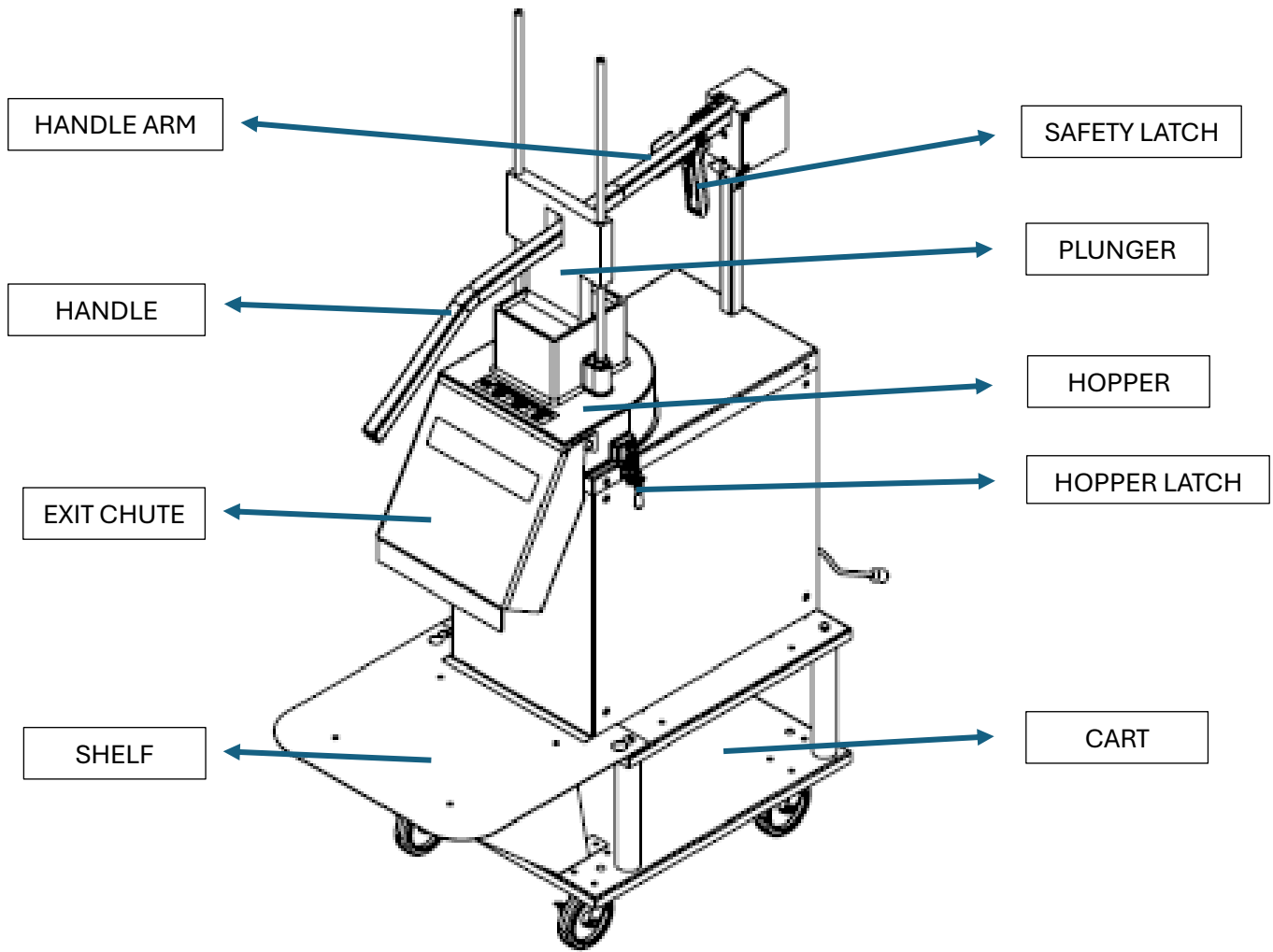
THIS  
PAGE  
LEFT  
INTENTIONALLY  
BLANK

## **INSTALLATION & SETUP**

*~See Diagram on the next page~*

1. Cut the straps and lift off the small box of parts and inspect for damage.
2. Lift off the box off the machine and inspect both the machine and the box for damage.
  - a. If damaged- contact the factory right away. Save all packaging. Do not use the machine.
3. If there is no damage- cut the straps from the machine.
4. Lift the machine straight up off the wooden base and place on the cart by lining up the holes in the cart with the screws of the bottom of the Shredder.
5. Install the Spinner onto the machine by lining up the 3 holes to the bolts.
6. Install the Shredder Blade by matching up holes on the Spinner then rotating clockwise to lock it in.
7. Install the Hopper onto the unit by placing in the collar. Then secure latches on both sides.
8. Attach the Handle to the Arm on the back of the unit by removing the 2 screws on the Arm, sliding the Handle on the Arm and replacing the screws.
9. Slide the Plunger onto the Handle through the hole. Then, match up the 2 holes on the bottom of the Plunger to the 2 poles on the Hopper and slide the Plunger down into the Hopper opening.
10. Attach the Exit Chute by hooking it onto the bolts on the sides of Hopper first, then onto the bolt on the front.
11. With a clean, soft cloth wipe off any dirt that may have accumulated during transit.
12. Check the data tag on the unit for the correct voltage and frequency.
13. Plug the unit into the proper power source.

# SCS-150 DIAGRAM



## **SAFETY INSTRUCTIONS**

*You must be 18 years old to operate this machine. Ensure that everyone who will be operating this machine has read and understands this manual.*

**NEVER** put hands or fingers inside the hopper opening while the machine is running.

**NEVER** start the machine unless it is fully assembled ensuring the hopper is properly latched on both sides.

**NEVER** plug the machine into an electrical outlet that is not properly wired. The motor and switches will be damaged and void the warranty on those parts. Check the data tag on the machine for electrical information.

**NEVER** use an extension cord that is not rated for your motor load. Wire gauge for an extension cord should be 121 gauge or heavier. Failure to use a proper extension cord will cause early motor burnout and will void the motor warranty.

**NEVER** use shredder blades from other manufacturers. Though the diameter and bolt pattern may be similar, our blades have teeth all the way to the center of the blade.

**ALWAYS** unplug the machine from outlet before performing any maintenance or repairs.

When not in use, the machine should be powered off, with the handle in the upright position, with the safety latch engaged.

## **OPERATION**

1. Plug the machine into the proper outlet.
2. The Spinner should spin in a counter clockwise direction.
3. Place a 25 pound block of cheese into the Hopper opening.
4. Place a container (sold separately) on the shelf under the Exit Chute to catch the shredded cheese.
5. Using the Arm, lower the Plunger to the top of the cheese.  
*\*\* Never start the machine without cheese in the Hopper opening\*\**
6. Press the Green On button and pull down on the Arm maintaining moderate pressure.
7. Once cheese is shredded, raise the Arm and place another block of cheese into the Hopper to shred.
8. Continue this procedure until all cheese is shredded.
9. Once all cheese is shredded, press the Red Off button.

- Never start the machine without cheese in the Hopper.
- If you need to stop shredding for any reason, turn the machine off.

## **CHEESE SHREDDING TIPS**

### **For best results**

- Cheese should not be warm.
- If the room temperature is warm, do not let the cheese sit out and warm up. The cheese will sweat and become sticky.
- DO NOT shred frozen cheese.
- Hopper opening measures 4  $\frac{3}{4}$  x 5  $\frac{3}{4}$  inches
  - Cheese block should measure 4  $\frac{1}{2}$  x 5  $\frac{1}{2}$  inches or smaller

# **DAILY CLEANING INSTRUCTIONS**

All parts listed below must be removed for cleaning

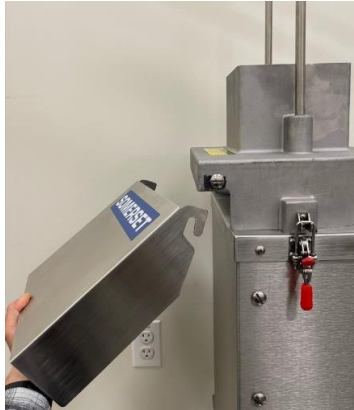
## **PLUNGER**

**(1)** With the Arm in upright safety position, slide the Plunger off the Handle to remove.



## **EXIT CHUTE**

**(2)** Remove Exit Chute by unhooking from the Hopper.



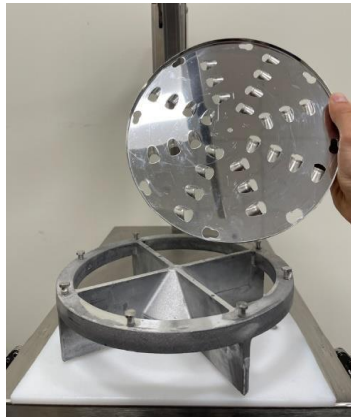
## **HOPPER**

**(3)** Unlatch both sides of Hopper by pushing button and lift up on latch.



## **SHREDDER BLADE**

**(4)** Rotate counter-clockwise and carefully remove Blade.



## **SPINNER**

**(5)** Lift the Spinner up to remove.



**NEVER** soak parts in the sink or put through the dishwasher!

- Parts should be washed with warm soapy water using a soft cloth.
- Using a damp soft cloth, wipe down the rest of the machine.

## **REASSEMBLY**

1. Install the Spinner onto the machine by lining up the 3 holes to the bolts.
2. Install the Shredder Blade by matching up holes on the Spinner then rotating clockwise to lock it in.
3. Install the Hopper onto the unit by placing it in the collar. Then secure latches on both sides.
4. Attach the Handle to the Arm on the back of the unit.
5. Slide the Plunger onto the Handle through the hole. Then, match up the 2 holes on the bottom of the Plunger to the 2 poles on the Hopper and slide the Plunger down into the Hopper opening.
6. Attach the Exit Chute by hooking it onto the bolts on the sides of Hopper first, then onto the bolt on the front.



## **WARRANTY INFORMATION**

Having trouble with your unit or just need to ask a question? Call us!  
We have service technicians available to assist.

### **Hours of Operation:**

Monday thru Friday

8:30am - 5:00pm EST

Ph. 978-667-3355 or 800-772-4404

Email: [service@smrset.com](mailto:service@smrset.com)

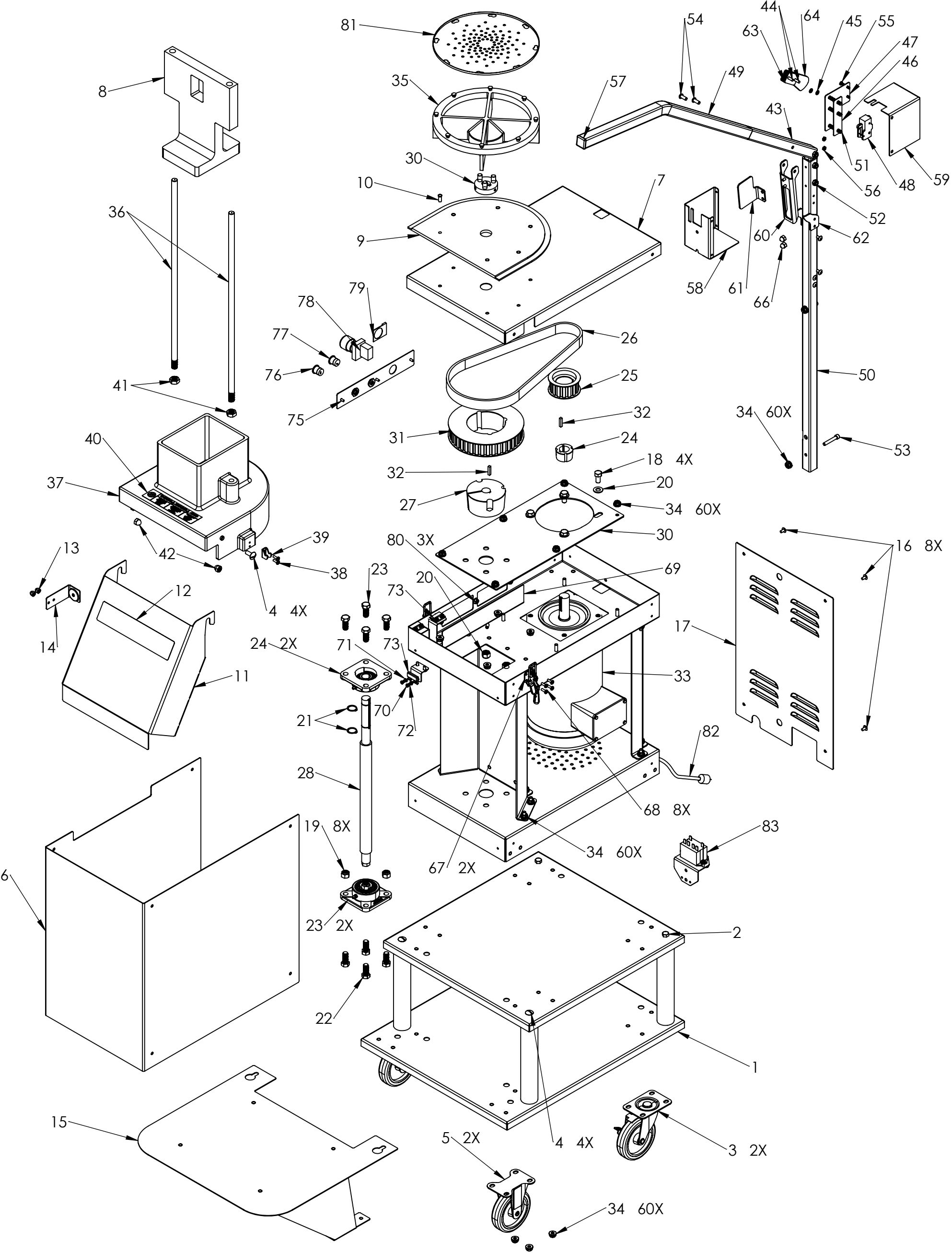
### **Parts can also be ordered from Parts Town**



Phone: 800-438-8898

<https://www.partstown.com/somerset-industries/parts>

L060-045 : SCS-150 PARTS LIST  
REV B : 27 JUL 23



# L060-045 : SCS-150 PARTS LIST

## REV B : 27 JUL 23

ITEM	PART NO.	DESCRIPTION	QTY.
1	0025-000	TABLE, CHEESE SHREDDER	1
2	3000-405	SCREW, 5/16-18 X 1/2 HEXHD	6
3	4000-703	CASTER, SWIVEL, PLATE MNT, W/BRAKE, 4" DIA	2
4	3000-485	SCREW, 5/16-18 x .75, TRUSS HEAD	4
5	4000-704	CASTER, RIGID, PLATE MNT, NO BRAKE, 4" DIA	2
6	0150-037	COVER, FRONT, SST	1
7	0150-050	COVER, TOP, SST	1
8	0150-208	PLUNGER, NON-METALLIC	1
9	0150-250	PLATE, SPINNER BASE, UHMW	1
10	3010-209	PEM, FLUSH HEAD, 1/4-20 X 5/8", SST	6
11	0150-155	WELDMENT, DISCHARGE CHUTE	1
12	5000-327	LABEL, "SOMERSET" LARGE	1
13	3000-480	NUT, ACORN, 10-32, SST	2
14	0150-252	ASSY, MAGNETIC TARGET, D-CHUTE	1
15	0150-265	ASSY, BIN SHELF	1
16	3000-402	SCREW, 10-32 X 3/8 TRUSS PH SS	8
17	0150-301	COVER, REAR, SST	1
18	3000-487	SCREW, HEX, 3/8-16 X 3/4", GRADE 8	4
19	3000-315	NUT, HEX, NYLOCK, 7/16-14	8
20	3000-201	WASHER, FLAT 3/8"	4
21	3000-320	RING, RETAINING, 3/4" SPRING STEEL	2
22	3000-477	BOLT, HEXHD CAP SCREW 7/16-14 X 1, SST	8
23	4000-575	BEARING, FLANGE, 3/4" BORE	2
24	4000-540	BUSHING, TAPER LOCK, 7/8" BORE	1
25	4000-485	PULLEY, 16 TOOTH, ½" PITCH, 1" WIDE	1
26	4000-330	BELT; 34 IN LG, 1/2 PITCH, 1IN WIDTH	1
27	4000-545	BUSHING, TAPER LOCK, ¾" BORE	1
28	0150-150	SHAFT, DRIVE, 1.00" X 17.375", SST	1
29	5000-035A	ASSY, MOTOR MOUNT	1
30	0150-205	ASSY, COUPLING	1
31	4000-485	PULLEY, 40 TOOTH, ½" PITCH, 1"WIDE	1
32	4000-531	KEY, 3/16" X 3/16" X 7/8" LG	2
33	5000-128	MOTOR, GP, 2 HP, 50/60HZ, 115/230VAC	1
34	3000-303	NUT, FLANGE, 1/4-20, SST	60
35	0150-410	ASSY, BLADE SUPPORT	1
36	0150-140	ROD, GUIDE, PLUNGER, THREADED	2
37	0150-628	HOPPER KIT (SA)	1
38	3000-444	SCREW, 8-32 X 1/2 PAN HEAD PH	4
39	4000-260B	HOOK, LOCKING TOGGLE	2
40	5000-313	LABEL, "KEEP FINGERS..."	1
41	3000-314	NUT, HEX, 1/2-13, THIN, 18-8 SST	2
42	3000-507	NUT, ACORN, 5/16-18, SST	2

\* = CONTACT FACTORY FOR OTHER SHREDDING DISC OPTIONS

- 4000-804: DISC, SHREDDER, 3/32"
- 4000-806: DISC, SHREDDER, 1/4"
- 4000-807: DISC, SHREDDER, 5/16"
- 4000-808: DISC, SHREDDER, 1/2"

ITEM	PART NO.	DESCRIPTION	QTY.
43	0150-114	POLE, HANDLE, MACH, SST	1
44	3000-341	SCREW, 10-32 X 1 ROUND PH	2
45	3000-101	WASHER LOCK #10 INT TOOTH	6
46	0150-031	PLATE, HINGE, RIGHT, HANDLE, SST	1
47	0150-035	PLATE, HINGE, LEFT, HANDLE, SST	1
48	5000-207	SWITCH, MICRO, SNAP ACTION, SPDT, 15A	1
49	0150-116	HANDLE, FORCE, MACH, SST	1
50	0150-118	BASE, HANDLE, MACH, SST	1
51	3000-411	SCREW, 1/4-20 X 1-1/2 HHCS GR2 STL ZINC	3
52	3000-227	1/4-20 NYLOCK NUT	3
53	3000-432	SCREW, 1/4-20 X 1-1/2 SHCS	2
54	3000-457	SCREW, 1/4-20 X 5/8 HEX BUTTON HEAD	2
55	3000-446	SCREW, PAN HEAD, 8-32 X 1"	2
56	3000-310	NUT, HEX 6-32	2
57	3000-497	PLUG, PLASTIC, SQUARE, 30mm X 30mm x 19mm	1
58	0150-047	COVER, FRONT, SAFETY SWITCH, SST	1
59	0150-049	COVER, REAR. SAFETY SWITCH, SST	1
60	0150-053A	ASSY, LATCH, HANDLE REST	1
61	0150-060	COUNTERWEIGHT, SST	1
62	0150-051	PLATE, BRACKET, HANDLE REST, SST	2
63	0150-065	PLATE, SWITCH MTG, W/O CAM	3
64	0150-067	PLATE, SWITCH MTG, W/ CAM	2
65	3000-402	SCREW, 10-32 X 3/8 TRUSS PH SS	6
66	3000-302	NUT, ACORN 1/4-20	2
67	4000-259	CLAMP, TOGGLE, LOCKING ACTION	2
68	3000-444	SCREW, 8-32 X 1/2 PAN HEAD PH	8
69	0150-033	GUARD, ELECTRICAL, SST	1
70	3000-309	NUT, HEX 4-40, Z-PLATED	4
71	3000-204	WASHER, FLAT #4	4
72	3000-104	WASHER, LOCK SPLIT #4	4
73	5000-225	SENSOR, REED SWITCH	2
74	0150-069A	ASSY, BRACKET, HOPPER MAGNET	1
75	2000-335	SWITCH PLATE	1
76	5000-202	SWITCH POWER RED	1
77	5000-203	SWITCH POWER GREEN	1
78	5000-226	E-STOP	1
79	5000-228-V	LABEL, E-STOP, VINYL	1
80	3000-301	#10-32 FLANGE NUT	3
81	4000-805*	DISC, SHREDDER, 3/16"	1
82	5000-231**	CORD, POWER 240VAC, 15A, 8'	1
83	5000-151	RELAY, 220 VAC	1

\*\* = CONTACT FACTORY FOR INTERNATIONAL CORD OPTIONS