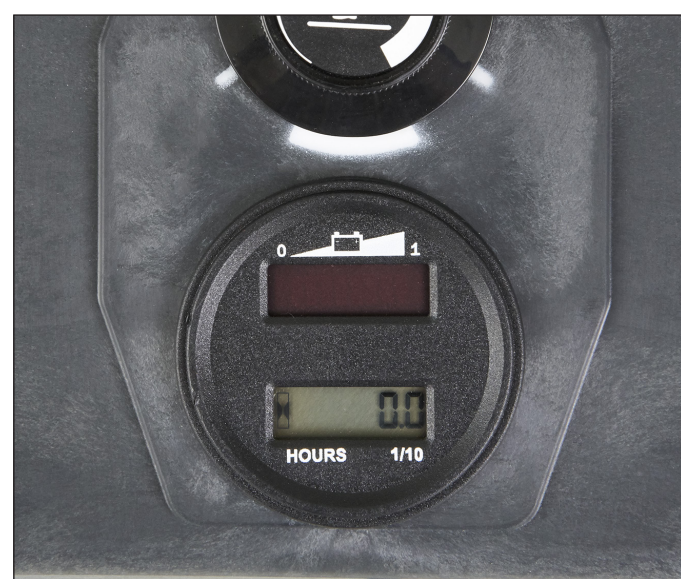


Use and maintenance - SC901

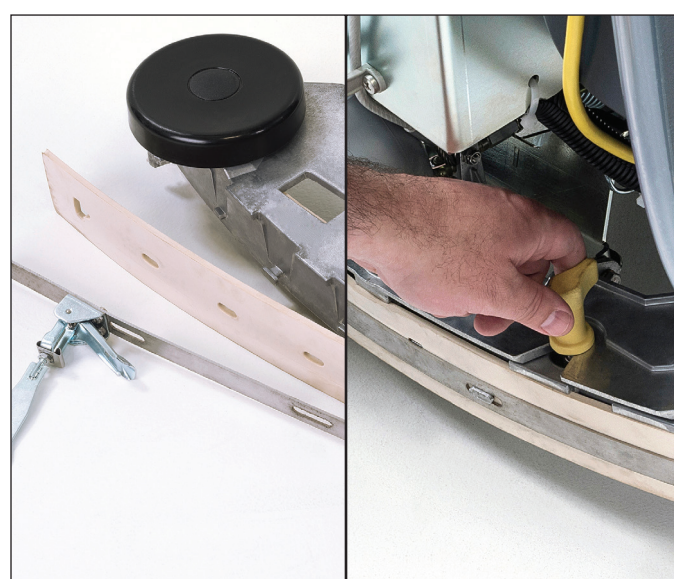
ATTENTION! Do not use the machine before you have read and understood the Instructions for use manual



1. Turn the machine on and check the status of the batteries. If two bars or less are showing, charge the machine for 2 to 8 hours.



2. Inspect the pads or brushes for wear and install them on the machine. Lift the lugs into the slots and rotate the brushes to lock them into place.



3. Check the squeegee blades for wear and flip or replace if worn, nicked or torn. Install squeegee and hand tighten thumb nuts.



4. Inspect and clean the solution filter as required. Filter – pn 56104351.



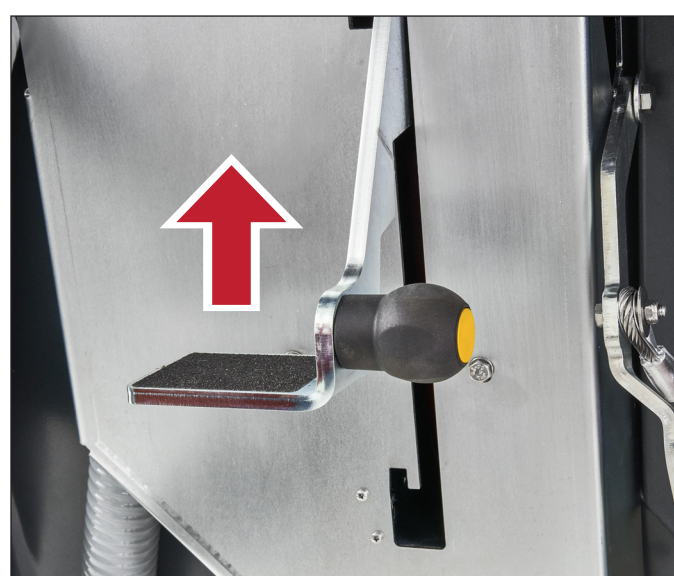
5. Fill the tank with the appropriate cleaning solution. Black Cap – pn 56115395



6. Press the paddle forward to transport the machine to the area to be cleaned.



7. Pull the paddle backward to go in reverse.



8. Lower the scrub deck to the floor using the foot pedal. Select low, medium or high scrub pressure.



9. Lower the squeegee to the floor and the vacuum motor will start.



10. Select the desired solution flow rate based on the soil conditions.



11. Propel the machine forward using the paddle.



12. When the vacuum motor changes pitch the recovery tank is full and needs to be emptied. Refill the clean water tank as required.



13. Inspect and clean the debris catch cage. Refill the clean water tank as required.



14. When finished using the machine, remove the pads or brushes. Inspect and clean or replace them as required.



15. Clean and inspect the squeegee blades. Flip the blade or replace it if required. Hang the squeegee on the machine as shown.
Tan Gum Rubber Blades – pn 56115334
Red Linatex Blades – pn 56115333



16. Rinse the recovery tank and leave the lid open to dry.



17. Inspect the float ball cage.



18. Empty the clean water solution tank.



19. Charge the machine when not in use.

If the machine has been used until the low battery level indicator is on the machine, a full recharge of the batteries (10-12 hours) will be required. Failure to carry out this procedure may cause damage to the batteries. Charging the batteries after every use is recommended.

PLEASE ENSURE THE CHARGER IS ALWAYS CONNECTED TO THE BATTERIES EVEN IF NOT USED FOR LONGER PERIOD OF TIME TO PREVENT DAMAGE TO THE BATTERY DUE TO LOW VOLTAGE.

Nilfisk, Inc.
9435 Winnetka Avenue North
Brooklyn Park, MN 55445
www.nilfisk.us
Phone 800-850-5559
Fax 800-989-6566

Nilfisk Canada Co.
240 Superior Boulevard
Mississauga, Ontario, Canada L5T 2L2
www.nilfisk.ca
Phone 800-668-8400
Fax 800-263-5111

 **Advance**
by Nilfisk

Troubleshooting & Maintenance

- SC901

ATTENTION! Do not use the machine before you have read and understood the Instructions for use manual



Why isn't there enough water being dispensed?



1. Check the water level of the tank.



2. Check the solution shut off valve.

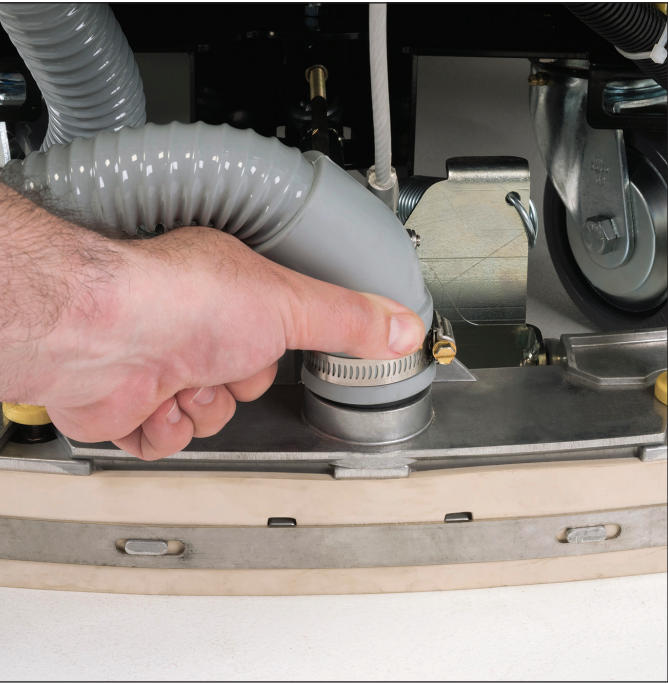


3. Check the solution filter.

Why is water being left on the floor?



1. Check the squeegee for wear and even fold over.



2. Check the squeegee hose connection and suction.

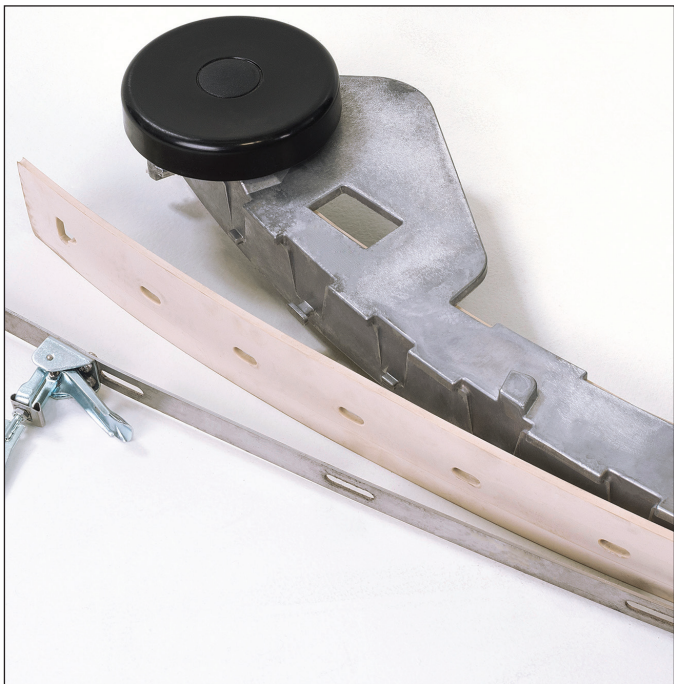


3. Inspect the recovery lid gasket.
Gasket – pn 56104164



4. Make sure to avoid tight turns.

Daily Maintenance



1. Inspect the squeegee for wear and replace as required.



2. Inspect the pads/brushes for wear and replace as required.
14 in Pad Driver – pn 56505800



3. Charge the machine when not in use.

Weekly Maintenance



1. Check the level of the batteries and add distilled water as required.



2. Inspect and clean the solution filter.



2. Inspect the recovery tank gasket and hoses.