

Sanitaire®



HydroClean™
Hard Floor Washer
MFG # SC930A

HydroClean™

VACUUM + WASH ALL AT ONCE

Compared to traditional hard floor cleaning methods for commercial buildings, the Sanitaire® HydroClean™ eliminates steps to double your productivity* and help you get more done in less time.

Times Savings For Commercial Buildings



Vacuum + Wash All At Once



Cut Cleaning Time In Half*



Drop The Mop



Self-Cleaning Function

SANITAIRE® HydroClean™



ONE STEP:
VACUUM + WASH
ALL AT ONCE

VS.



TRADITIONAL CLEANING METHODS

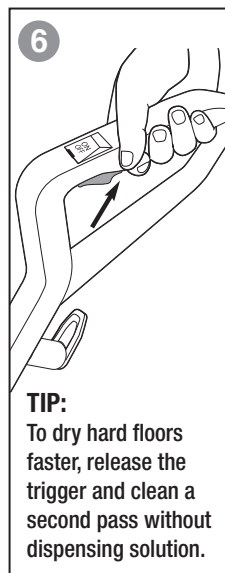
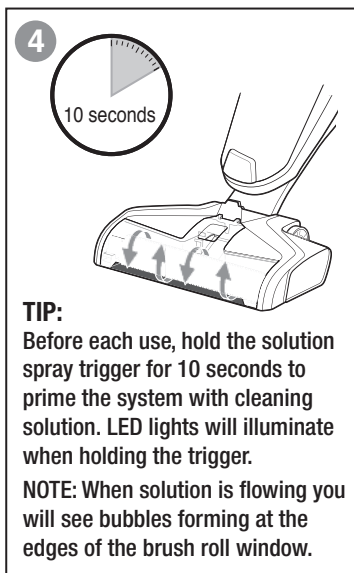
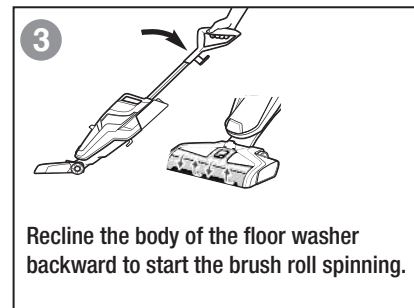
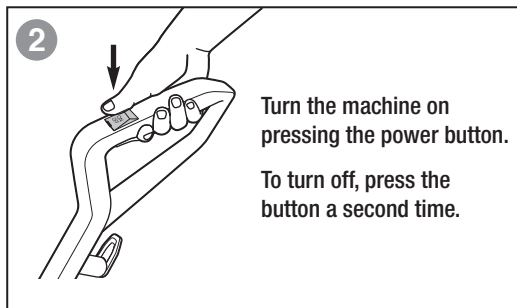
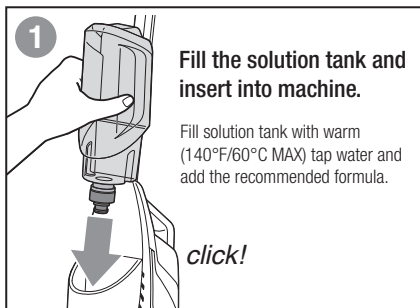
STEP 1:
VACUUM
OR
ANGLE BROOM
OR
LINT / STICKY ROLLER

STEPS 2 & 3:
SPRAY BOTTLE
&
MICROFIBER MOP
OR
MOP & BUCKET

*Based on an AICS Time & Motion Study as compared to a typical three-step manual cleaning process.

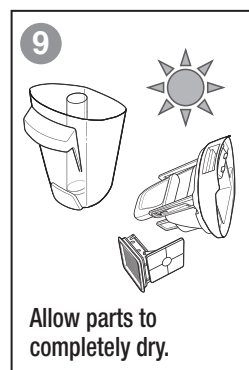
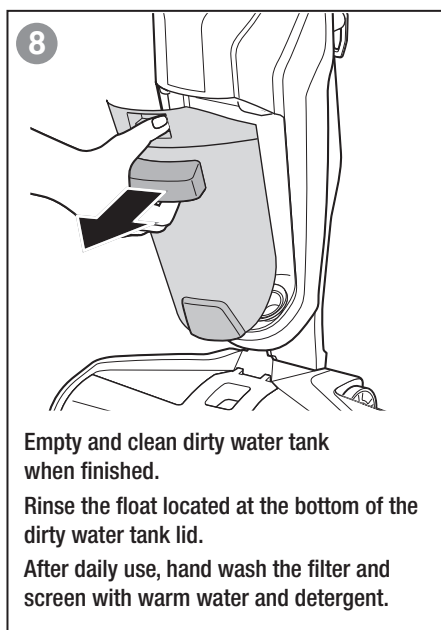
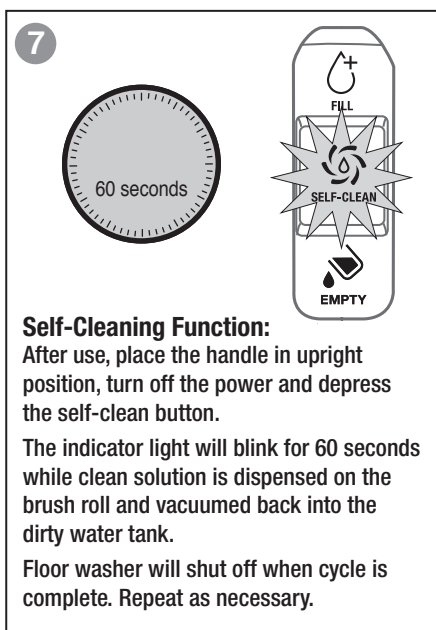
Sanitaire®

HydroClean™ - SC930A - Quick Reference Guide



TIP: For lighter spills, hold the trigger down on the forward pass and release when pulling back to reduce drying time.

TIP: For overly challenging and stuck-on messes on your hard floors, hold the Sanitaire® Hard Floor Washer over the mess. Using short passes while holding the trigger allows the multi-surface brush to go to work.



Scan QR Code to View Maintenance Video



NOTE: Store floor washer in a protected, dry area. Since this product uses water, it must not be stored where there is a danger of freezing. **FREEZING WILL DAMAGE INTERNAL COMPONENTS AND VOID THE WARRANTY.**