



IDEAL WAREHOUSE
INNOVATIONS INC.

Protecting Your People

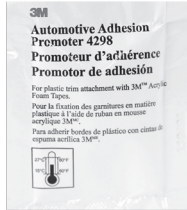
Safe-Bump

Installation Instructions



(2) 100 lb Magnets
Per Bumper

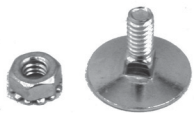
Magnets: These are used to attach to any metal surface.



(1) Adhesion
Promoter Wipe

Adhesion Promoter:

This promoter will dramatically increase the adhesion of both the bumper and the surface you are applying the two-tape to. First, clean both the surface of the Safe-Bump and surface with alcohol. Let it dry. Apply the Adhesion Promoter to both the Safe-Bump surface and the area where the bumper will be placed. Let dry. Then apply the two-way tape. If the Safe-Bump is placed on a vertical surface apply pressure and secure with shipping tape. Please do not pull on the bumper for at least 12 hours so the two-way tape has time to cure.



(2) Nuts and Bolts
per Bumper

Nuts and Bolts: They hold magnet and bracket in place.



(4) Brackets
per Bumper

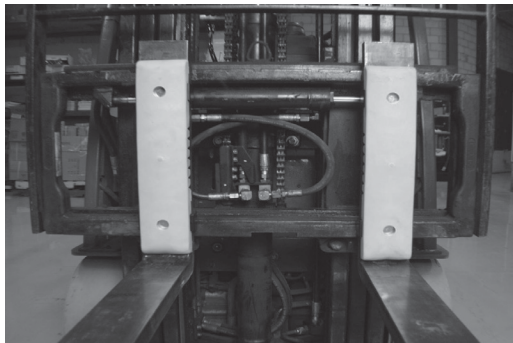
Bracket: To be installed when used on forks. Sideshifting will cause the bumper to slip. The bracket will keep the bumper securely in place. Tighten nuts to keep bracket in place.



(4) 2-Way Tape
per Bumper

Two-Way Tape:

The tape is used when you want the bumper to be permanent. It prevents the bumper from



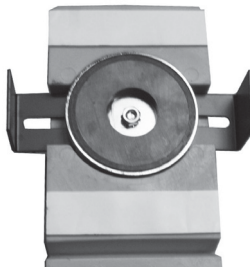
Use magnet and brackets when used as fork bumpers.



Safe Bump can bend around corners. Use both magnet and tape to secure.



The bracket keeps the bumper from moving sideways.



Brackets can adjust from 3.2" to 5.5" in width.



Use magnet and two-way tape when used as a counterweight bumper.