

Instruction Sheet

Subject: Racks

SCOPE: MULTIPLEX RACKS

Racks can be configured with a variety of options for usage and space requirements. This instruction covers basic assembly and installation.

TOOLS REQUIRED

- Safety Gloves (cut resistant)
- Screw Drivers, Phillips & Flat Head
- Tubing Cutters
- Oetiker Pliers
- Needle Nose Pliers

PARTS REQUIRED

- Zip Ties
- Rack System Kit

Warning

Carbon Dioxide (CO₂) displaces oxygen. Exposure to a high concentration of CO₂ gas causes tremors, which are followed rapidly by loss of consciousness and suffocation. If a CO₂ gas leak is suspected, particularly in a small area, turn off CO₂ supply and immediately ventilate the area before repairing the leak. CO₂ lines and pumps must not be installed in an enclosed space. An enclosed space can be a cooler or small room or closet. This may include convenience stores with glass door self serve coolers. If you suspect CO₂ may build up in an area, venting of the BIB pumps and/or CO₂ monitors must be utilized.

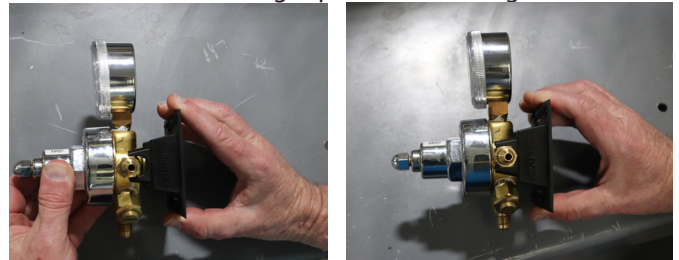
INSTRUCTION

1. Assemble rack. See Rack Assembly Diagrams (PN 020009186). Verify shelves are securely inserted into rack uprights.



2. Assemble the regulator.

- A. Install mounting clip onto back of regulator.

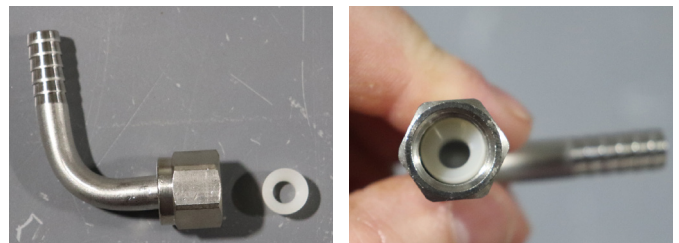


NOTE: If using two regulators both regulators each require a mounting clip.



- B. Install washer into beverage fitting then install fitting on regulator.

NOTE: Beverage fitting may be straight or elbow.



- C. Fittings on single regulator assembly pictured below.



3. Install hanger clips onto the product pumps. See "Product Pump and Regulator Configuration Samples" on page 4.

4. Arrange product pumps and regulator(s) in place on rack.

NOTE: Product pump and regulator series configurations will vary by application. See "Product Pump and Regulator Configuration Samples" on page 4. for examples of different configurations.

NOTE: Gas tubing from regulator to pump series needs to be in a continuous circuit with regulator at beginning and last product pump with end-fitting at the end of the circuit.



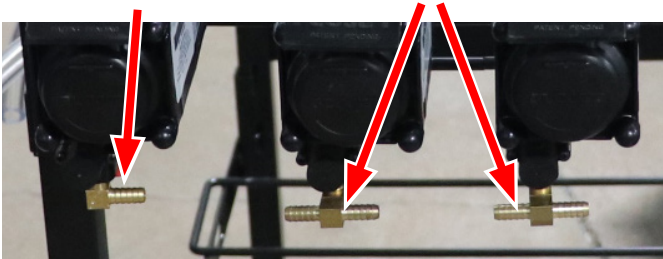
5. Make sure last pump in series has a single fitting connection and all other pumps in series have T fittings.



End-Fitting



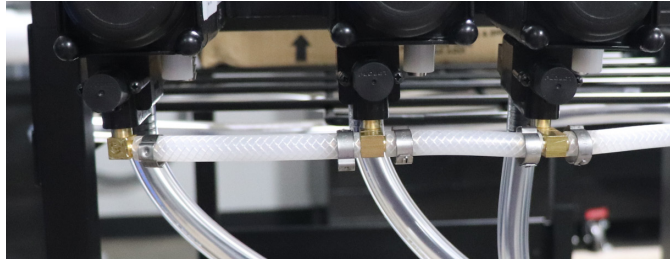
T-Fitting



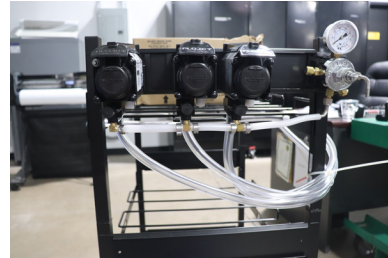
6. Install gas tubing between regulator and first pump in the series using Oetiker clamps.



7. Install gas tubing between each pump in the series. It may be easier to remove the fitting, install the tubing then reinstall fitting onto pump.



8. Install gas tubing from first pump in series to the regulator on the rack.



9. If applicable connect each syrup pump exhaust to vent outside of closed space.

Warning

When installing rack inside closed space pump exhausts **MUST** be exhausted outside closed space.

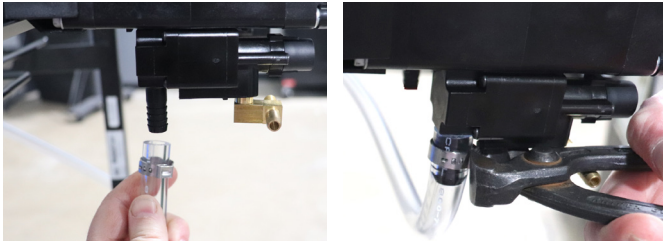
10. Install gas tubing from regulator on rack to regulator on tank.



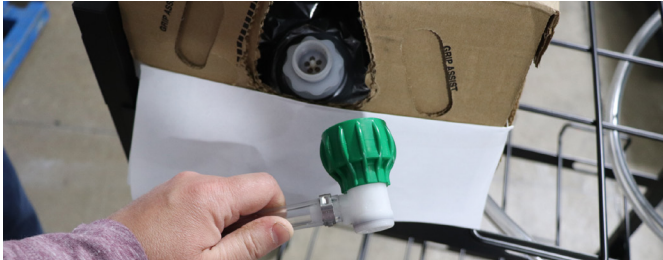
11. Install product/syrup tubing. Leave 12 inches (30.5cm) excess at front of rack for syrup bag connector.



12. Connect each syrup tube line to pumps using Oetiker clamp.



13. Connect each end of syrup tube to syrup BIB connector using Oetiker clamp.



14. Carefully arrange tubing along rear of rack and loosely zip tie together. Do NOT over tighten zip ties.



15. If applicable install the bag-in-box bracket. Be careful not to crush or damage any tubing.

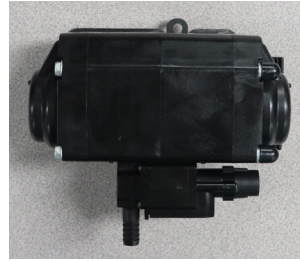
NOTE: The bag-in-box bracket is used to prevent smaller, 3-gallon bags, from falling through the rack.



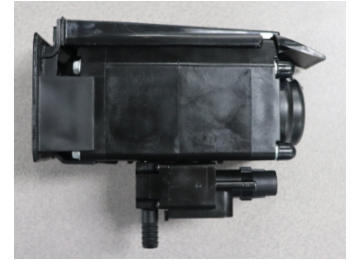
PUMP HANGER CONFIGURATIONS

FLOJET

Pumps have two mounting options.



Back Mount
(Flush against rack)



Side Mount
(Protrudes out from rack)

SHURFLO

Pumps have two mounting options.



Back Mount
(Flush against rack)



Side Mount
(Protrudes out from rack)

PRODUCT PUMP AND REGULATOR CONFIGURATION SAMPLES

Actual configuration may vary from sample pictures below.

