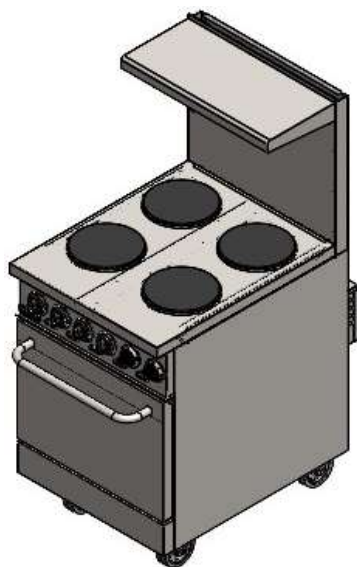


ELECTRIC RANGES

USER MANUAL

ELECTRIC RANGES

MODEL



R-24



R-36



Intertek



Intertek

CONTENTS

A	GENERAL INFORMATION	Page 2
A1	PRODUCT DESCRIPTION	Page 4
A2	TECHNICAL INFORMATION	Page 4
A3	TRANSPORTATION	Page 7
A4	UNPACKING	Page 7
B	INSTALLATION	Page 7
C	SAFETY INSTRUCTIONS	Page 8
D	OPERATION	Page 9
E	CLEANING & MAINTENANCE.....	Page 10
F	TROUBLESHOOTING	Page 11
G	SPARE PART LIST- EXPLODING DRAWING	Page 12
H	ELECTRIC CIRCUIT SCHEMA	Page 16

ELECTRIC RANGES

A GENERAL INFORMATION

Before installing the appliance, read operation and maintenance instructions carefully. Wrong installation and part changing may damage the product or may cause injury on people. These are not in our company's responsibility to damage the appliance intentionally, negligence, detriments because of disobeying instructions and regulations, wrong connections. Unauthorized intervention to appliance invalidates the warranty.

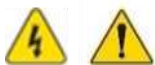
1. This instruction manual should be kept in a safe place for future reference.
2. **Installation should be made in accordance with ordinances and security rules of that country by a qualified service personnel.**
3. This appliance has to be used by trained person.
4. Please turn off the appliance immediately in the event of malfunction or failure. The appliance should be repaired only by authorized service personnel. Please demand original spare part.

WARNING:

- This device must be installed in accordance with applicable legislation and should only be used in a well-ventilated area. Please refer to the instructions before installing and using this device.
- Improper installation, adjustment, modification, service or maintenance can result in property damage, injury or death. Read the installation, use and maintenance instructions before installing or servicing this equipment.

SAFETY SYMBOLS

These symbols are intended to alert the user to the presence of important operating and maintenance instructions in the manual accompanying the appliance



ELECTRIC RANGES

SERVICE AND MAINTENANCE / MAINTENANCE AND REPAIRS

Contact your local authorized service agent for service or required maintenance.

Contactez un technicien agréé pour toute réparation ou maintenance.

Please record the model number, serial number, voltage and purchase date in the area below and have it ready when you call to ensure a faster service.

Model No.
Serial No.
voltage
Purchase Date

Authorized Service Agent Listing Reference the listing provided with the unit Or for an updated listing go to

Website / Site web: www.empero.com.tr

E-mail / Courriel: empero@empero.com.tr

Service Help Desk	
Company	Galaxy Group Corp
Website / Site	www.galaxygroupcorp.com
telephone	(908) 315-3222
fax	-
Address:	899 Newark Tpke, Kearny NJ 07032 USA

IMPORTANT

Make sure that all paper protection and packaging have been removed before operating the device. This device should only be installed in the closed position.



WARNING :The device must be used by trained personnel.

ELECTRIC RANGES

A1 PRODUCT DESCRIPTION

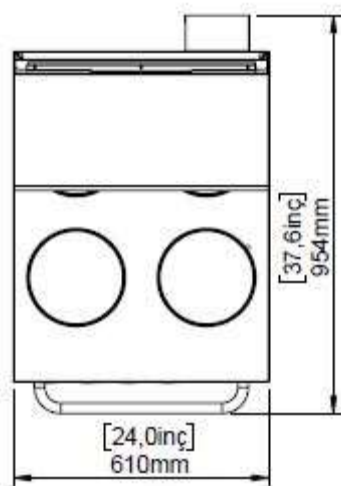
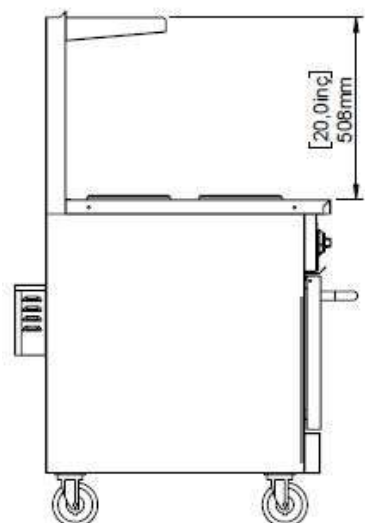
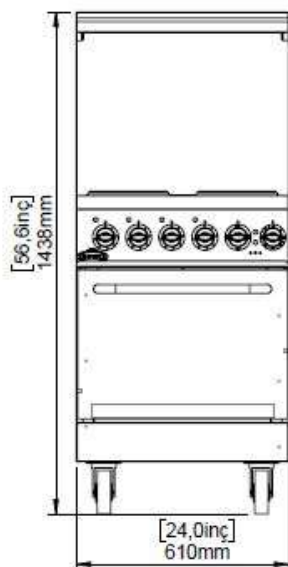
*The Professional Electric Ranges ,that provides high efficiency has been designed to be used in industrial kitchens.

Model	Depth (A) cm / inch	Width (B) cm / inch	Height (C) cm / inch	Approximate Weight	
				Unpacked Kg/Lb	Packed Kg/Lb
R-24	610 mm 24.0"	954 mm 37.6"	1438 mm 56,6"	116 kg 255.73 lb	130 kg 286.60 lb
R-36	914 mm 36 "	954 mm 37.6"	1438 mm 56,6"	142.5 kg 314.15 lb	160 kg 352.74 lb

A2 TECHNICAL INFORMATION

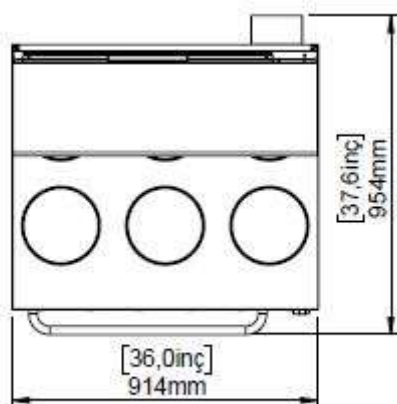
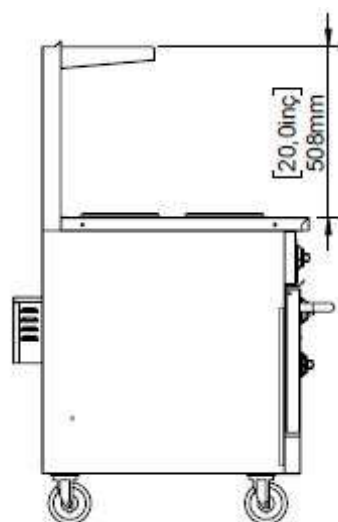
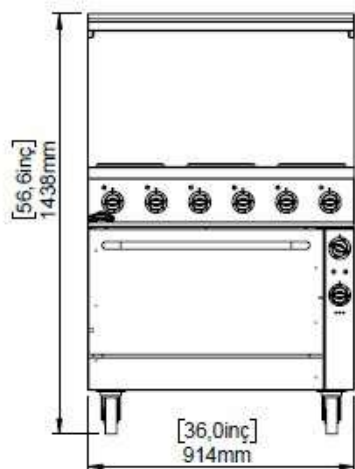
Model	Voltage	KW Total	Amps (Max.)	Mounting
R-24	208 V	13,3 KW	1P- 64 A 3P - 37 A	Free Standing
R-36	208 V	17,3 KW	1P - 84 A 3P – 48 A	Free Standing

R-24



ELECTRIC RANGES

R-36



A3 TRANSPORTATION

*This appliance can not be moved by hand from area to area. It must be moved on pallet with forklift truck.

A4 UNPACKING

*Please unpack the package according to the security codes and ordinances of current country and get rid from the pack. Parts which contacts with food are produced by stainless steel. All plastic parts are marked by material's symbol.

*Please check that all the parts of appliance had come completely and if they are damaged or not during the shipping.

B INSTALLATION

*Please place the product to straight and sturdy ground, please take necessary steps against possibility of overturn.

*Technician who will serve for installation and service for the appliance must be professional on this subject and must have installation and service licenses by the company.

*Connection to Electric Power Supply must be done by authorized person.

*Please be sure that the voltage connected to appliance must be equal with the voltage which is on appliance's label.



This appliance must be connected to an earthed outlet in accordance with safety rules and standards.

*Appliance's earthing must be connected to earthing line on panel which is nearest to electric installation.

*Connection to the main fuse and leak current fuse must be done in accordance with the current regulations.

*If the location where electric ranges placed is covered with nonflammable heat insulation material, the distance between them must be 5 cm. Otherwise it should be at least 20 cm. The appliance shouldn't be operated under chimney hood.

ELECTRIC RANGES

C SAFETY INSTRUCTIONS



*Do not use the appliance in insufficient lighted place.



*Do not touch the moving attachments while the appliance operates.



*Do not install the appliance in the presence of flammable or explosive materials.



*Do not operate the appliance when the machine is empty.



*Do not load so less or more than appliance's capacity.



*Do not attempt to use the appliance without suitable protective equipments.



*Because of any reason if there is a fire or flame flare where the appliance is used, turn off all gas valves and electric contactor switch quickly and use fire extinguisher. Never use water to extinguish the fire.



*All the damages because of not having earthing connection will not be on warranty.

ELECTRIC RANGES



a) Adequate means must be provided to limit the movement of the appliance without depending on or transmitting stress to the electrical conduit;



b) Restraint device is located on the back side of appliance.

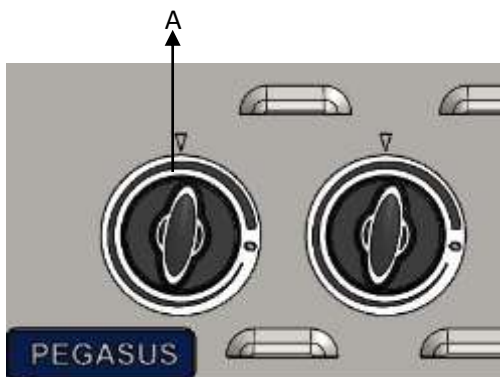


c) The appliance shall be installed using flexible conduit.

ELECTRIC RANGES

D OPERATION

*Control Panel;



A : Heat setting button

*Operating;

- Plug in the appliance.
- Put the cooker on the range.
- Adjust heat setting buttons to desired temperature.
- The range reaches the desired temperature and starts to operate.
- After operation is completed, switch heat setting buttons to (0) position and unplug the appliance.

	Combustible	Noncombustible
Back	6"	0
Sides	6"	0

E CLEANING & MAINTENANCE

➤ **CLEANING AND MAINTENANCE AFTER EVERY USE**

- Always turn off the appliance and disconnect from the power supply before cleaning.
- Clean the outer surface of the appliance with a wet cloth and chrome shiner.
- Do not use abrasive cleaning chemicals as these can leave harmful residues.
- Do not clean the appliance by spraying water directly, otherwise electric motor may get damaged.
- Remove the oven shelf and wash it with water.
- Wipe the inside of the oven and the bottom plate with a damp cloth, then place the washed shelf.

➤ **PERIODIC CLEANING AND MAINTENANCE**

- Maintenance should be done by qualified person.
- Get the periodic maintenance of the appliance once in every 15 days.
- Check the heater's electric connection in periodic times.
- Maintenance of the appliance's contactor should be done by compressed air according to frequency of use.

ELECTRIC RANGES

F TROUBLESHOOTING

THE APPLIANCE DOESN'T OPERATE	<ol style="list-style-type: none"> 1. Check if the appliance is plugged in. 2. Check the electrical connections and voltage.
--------------------------------------	--

THE APPLIANCE DOESN'T COOK WELL	<ol style="list-style-type: none"> 1. Check if it is operated at required heat or not.
--	---

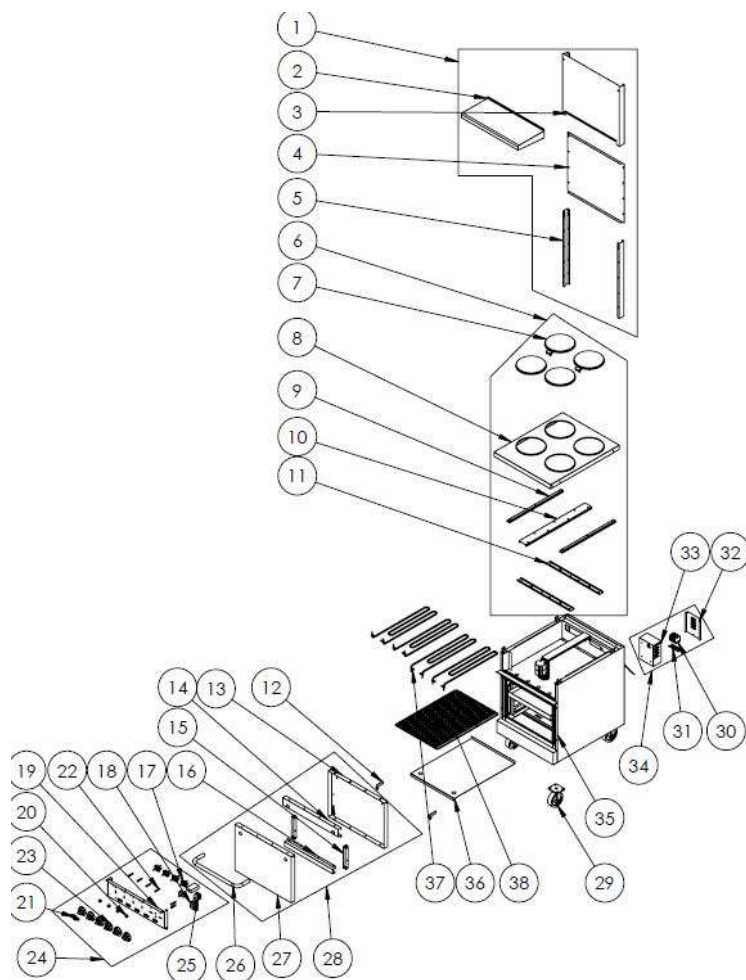
THE APPLIANCE STOPPED	<ol style="list-style-type: none"> 1. The appliance can stop due to low voltage. In this situation check the voltage. 2. When the plates get too hot, they protect themselves and can be operated again after they cool down.
------------------------------	---

<ul style="list-style-type: none"> • If cooking at electric ranges is not done at suitable quality • If any function of security doesn't work <ul style="list-style-type: none"> ➤ Do not use the appliance.
--

***If these problems are still going on, contact with our authorized services.**

G SPARE PART LIST-EXPLODING DRAWING

R-24



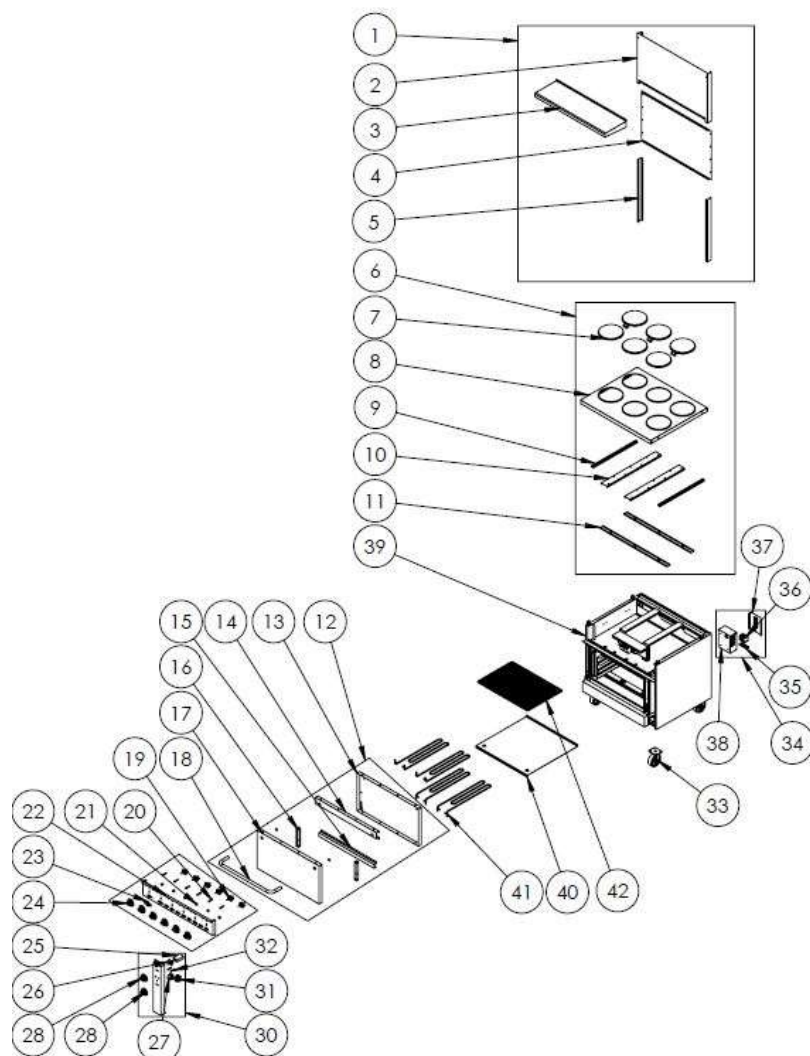
ELECTRIC RANGES

PRODUCT CODE :R-24		
NO	PRODUCT NAME	U. CODE
1	BACK WALL MNTJ .	EMP.PLS.7KE021-UL
2	EMP.PLS.7KE021-UL-REAR WALL HAT SC	YSC-KNX.PG7-LZ-1465
3	EMP.PLS.7KE021-UL-REAR WALL SC	YSC-KNX.PG7-PN-1030
4	EMP.PLS.7KE021-UL REAR WALL CLOSURE SC	YSC-KNX.PG7-PN-1028
5	EMP.PLS.7KE021-UL-REAR WALL SLIDE SC	YSC-KNX.PG7-PN-1032
6	PLAYT MNTJ	EMP.PLS.7KE021-UL
7	HOTPLATE 2 KW Q220 208V 4 OUTLET TERMINAL BLOCK-UL	M.ELK-HOT-YHT-017
8	EMP.PLS.7KE021-UL-TOP TABLE MONOLITHIC	YSC-KNX.PG7-LZ-1290
9	EMP.PLS.7KE021-UL-PLEYT BAG SHEET RIGHT-LEFT	YSC-KNX.PG7-LZ-1461
10	EMP.PLS.7KE021-UL-PLEYT BAG SHEET MEDIUM	YSC-KNX.PG7-LZ-1458
11	EMP.PLS.7KE021-UL-PLEYT SUPPORT SC	YSC-KNX.PG7-LZ-1462
12	LAMBSHEAD DOOR HINGE LAC-4040 RIGHT 700-900 (SERIES LAMBSHEADS)	M.AKS-MNT-KZN-003
13	EMP.PLS.7KE021-UL-COVER INNER SHEET	YSC-KNX.PG7-LZ-1294
14	EMP.PLS.7KE021-UL-COVER TOP SUPPORT SC	YSC-KNX.PG7-LZ-1464
15	LAMBSHEAD DOOR HINGE LAC-4039 LEFT 700-900 (SERIES LAMBSHEADS)	M.AKS-MNT-KZN-002
16	EMP.PLS.7KE021-UL-COVER BOTTOM SUPPORT SC	YSC-KNX.PG7-LZ-1466
17	EGO SWITCH 0-6 STAGE 16A 4927215000	M.ELK-SLT-EGO-002
18	55.32564.040- 350 C LIQUIDATOR L-1490MM	M.ELK-MEK-LMT-014
19	EMP.PLS.7KE021-UL-SUB PANEL SC EK	YSC-KNX.PG7-LZ-1291
20	FAUCET BUTTON SOCKET 6 MM ELK Ü.	M.AKS-DGM-SKT-002
21	EMPERO EMBOSSED METAL LABEL (PLUS)	M.AKS-OZL-MTL-006
22	INDICATOR LIGHTS 0568 - RED SIGNAL LAMP (DIAMETER 9,8MM)110V- USA	M.ELK-LMB-SNY-011
23	122-572 F EMP BUTTON ARROW BLACK PRINTED BEZEL-LESS FAHRENHEIT DIAL BUTTON-UL	M.AKS-DGM-EMP-052
24	PANO MNTJ	EMP.PLS.7KE021-UL
25	EGO 50-300 THREE-PHASE THERMOSTAT 55.340052.010	M.ELK-MEK-TRM3-001
26	EMP.PLS.7KE021-UL-COVER HANDLE PIPE	YBR-KNX.PG7-KS-0022
27	EMP.PLS.7KE021-UL-COVER TOOTH SHEET	YSC-KNX.PG7-PN-0985
28	COVER ASSEMBLY	40+1F-UL
29	WHEEL-BG-SC-END-1-2	CK-PPF-MYK
30	AVK 6-10 EARTHING TERMINAL 6 MM SARI YEŞİL	M.ELK-KLM-009
31	VENDING MACHINE RAIL (10CM)	YEL-ERS.PR-KS-0001
32	EMP.PLS.7KE021-UL-TRANSFORMER COVER SC	YSC-KNX.PG7-PN-1025
33	EMP.PLS.7KE021-UL-TRAFO SC	YSC-KNX.PG7-PN-1024
34	REAR PANEL MNTJ	EMP.PLS.7KE021-UL
35	MAIN BODY	EMP.PLS.7KE021-USA
36	EMP.PLS.7KE021-UL-INSOLE SC	YSC-KNX.PG7-LZ-1459
37	EMP.PLS.7KE021-UL 208V 1325W NEW PLUS RESISTANCE (125836)	M.ELK-RZS-BRU-PLS-006

ELECTRIC RANGES

G SPARE PART LIST-EXPLODING DRAWING

R-36



ELECTRIC RANGES

PRODUCT CODE: R-36		
NO	PRODUCT NAME	U.CODE
1	BACK WALL MNTJ	EMP.PLS.7KE031-UL
2	EMP.PLS.7KE031-UL-REAR WALL SC	YSC-KNX.PG7-LZ-1301
3	EMP.PLS.7KE031-UL-REAR WALL HAT SC	YSC-KNX.PG7-LZ-1302
4	EMP.PLS.7KE031-UL REAR WALL CLOSURE SC	YSC-KNX.PG7-LZ-1322
5	EMP.PLS.7KE021-UL-REAR WALL SLIDE SC	YSC-KNX.PG7-PN-1032
6	PLAYT MNTJ	EMP.PLS.7KE031-UL
7	HOTPLATE 2 KW Q220 208V 4 OUTLET TERMINAL BLOCK - UL	M.ELK-HOT-YHT-017
8	EMP.PLS.7KE031-TOP TABLE SC	YSC-KNX.PG7-LZ-1316
9	EMP.PLS.7KE021-UL-PLEYT BAG SHEET RIGHT-LEFT	YSC-KNX.PG7-LZ-1461
10	EMP.PLS.7KE021-UL-PLEYT BAG SHEET MEDIUM	YSC-KNX.PG7-LZ-1458
11	EMP.PLS.7KE031-UL-PLEYT SUPPORT SC	YSC-KNX.PG7-LZ-1329
12	COVER ASSEMBLY	EMP.PLS.7KE031-UL
13	EMP.PLS.7KE031-UL-COVER INNER SHEET	YSC-KNX.PG7-LZ-1307
14	EMP.PLS.7KE031-UL-COVER TOP SUPPORT SC	YSC-KNX.PG7-LZ-1325
15	EMP.PLS.7KE031-UL-COVER BOTTOM SUPPORT SC	YSC-KNX.PG7-LZ-1326
16	COB DOOR HINGE LAC-4039 LEFT 700-900 (SERIAL COUSINS)	M.AKS-MNT-KZN-002
17	EMP.PLS.7KE031-UL-COVER TOOTH SHEET	YSC-KNX.PG7-LZ-1306
18	EMP.PLS.7KE031-UL-COVER HANDLE PIPE	YBR-KNX.PG7-KS-0023
19	INDICATOR LIGHTS 0568 - RED SIGNAL LIGHT (DIAMETER 9,8MM) 110V- USA	M.ELK-LMB-SNY-011
20	ROBERTSHAW ENERGY REGULATOR MPA-V769-IMM 240V 15A	M.ELK-MEK-TRM1-032
21	FAUCET BUTTON SOCKET 6 MM ELK Ü.	M.AKS-DGM-SKT-002
22	EMP.PLS.7KE031-UL-SUB PANEL SC EK	YSC-KNX.PG7-LZ-1303
23	EMPERO EMBOSSED METAL LABEL (PLUS)	M.AKS-OZL-MTL-006
24	EMP BUTTON 0-6 PRINTED	M.AKS-DGM-EMP-010
25	0-3 STAGE COMMANDER-42.04000.029-EGO	M.ELK-SLT-EGO-004
26	EGO SWITCH 0-1 THREE-PHASE 49.42015.000 EGO	M.ELK-SLT-EGO-005
27	EGO 50-300 THREE-PHASE THERMOSTAT55.340052.010	M.ELK-MEK-TRM3-001
28	FIRED FRAMELESS PRINTED BUTTON	M.AKS-DGM-EMP-008
29	122-572 F EMP BUTTON ARROW BLACK PRINTED BEZEL-LESS FAHRENHEIT DIAL BUTTON-UL	M.AKS-DGM-EMP-052
30	OVEN PANEL SC	EMP.PLS.7KE031-UL
31	55.32564.040- 350 C LIQUIDATOR L-1490 MM	M.ELK-MEK-LMT-014
32	INDICATOR LIGHTS 0568 - RED SIGNAL LIGHT (DIAMETER 9,8MM)110V- USA	M.ELK-LMB-SNY-011
33	25-37.5 POLYAMIDE CASTER WITH BRAKE TABLE	M.AKS-TKR-PSF-008
34	REAR PANEL MNTJ	EMP.PLS.7KE021-UL
35	VENDING MACHINE RAIL (10CM)	YEL-ERS.PR-KS-0001
36	AVK 10x10 MM RAIL FLANGE (BLUE)	M.ELK-KLM-038

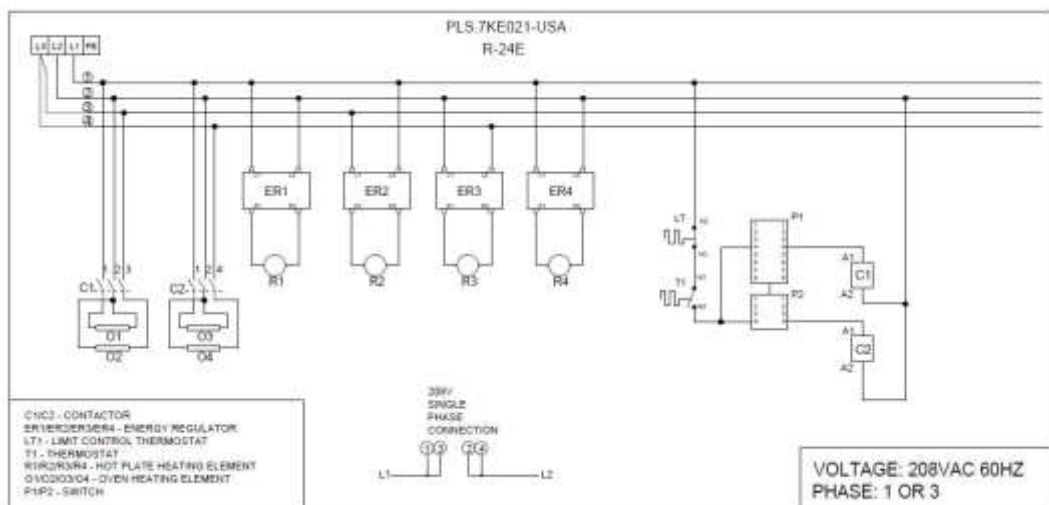
ELECTRIC RANGES

37	EMP.PLS.7KE021-UL-TRANSFORMER COVER SC	YSC-KNX.PG7-PN-1025
38	EMP.PLS.7KE021-UL-TRAFO SC	YSC-KNX.PG7-PN-1024
39	MAIN BLOCK	EMP.PLS.7KE031-USA
40	EMP.PLS.7KE031-UL-INSOLE SC	YSC-KNX.PG7-LZ-1331
41	EMP.PLS.7KE021-UL 208V 1325W NEW PLUS RESISTANCE (125836)	M.ELK-RZS-BRU-PLS-006
42	EMP.PLS.7KE021-UL-INOX- 201 K 660x460 MM	M.AKS-SPT-TEL-023

ELECTRIC RANGES

H ELECTRIC CIRCUIT SCHEMA

R-24



ELECTRIC RANGES

H ELECTRIC CIRCUIT SCHEMA

R-36

