

ELECTRIC RANGES

USER MANUAL

ELECTRIC RANGES

MODEL



HP-12



HP-24



HP-36



HPE-16E



HPE-32E



Intertek



Intertek

CONTENTS

A	GENERAL INFORMATION	Page 2
A1	PRODUCT DESCRIPTION	Page 3
A2	TECHNICAL INFORMATION	Page 3
A3	TRANSPORTATION	Page 6
A4	UNPACKING	Page 6
B	INSTALLATION	Page 6
C	SAFETY INSTRUCTIONS	Page 7
D	OPERATION	Page 8
E	CLEANING & MAINTENANCE.....	Page 9
F	TROUBLESHOOTING	Page 10
G	SPARE PART LIST- EXPLODING DRAWING	Page 11
H	ELECTRIC CIRCUIT SCHEMA	Page 12

ELECTRIC RANGES

A GENERAL INFORMATION

Before installing the appliance, read operation and maintenance instructions carefully. Wrong installation and part changing may damage the product or may cause injury on people. These are not in our company's responsibility to damage the appliance intentionally, negligence, detriments because of disobeying instructions and regulations, wrong connections. Unauthorized intervention to appliance invalidates the warranty.

1. This instruction manual should be kept in a safe place for future reference.
2. **Installation should be made in accordance with ordinances and security rules of that country by a qualified service personnel.**
3. This appliance has to be used by trained person.
4. Please turn off the appliance immediately in the event of malfunction or failure. The appliance should be repaired only by authorized service personnel. Please demand original spare part.

WARNING:

- This device must be installed in accordance with applicable legislation and should only be used in a well-ventilated area. Please refer to the instructions before installing and using this device.
- Improper installation, adjustment, modification, service or maintenance can result in property damage, injury or death. Read the installation, use and maintenance instructions before installing or servicing this equipment.

SAFETY SYMBOLS



These symbols are intended to alert the user to the presence of important operating and maintenance instructions in the manual accompanying the appliance.

SERVICE AND MAINTENANCE / MAINTENANCE AND REPAIRS

Contact your local authorized service agent for service or required maintenance.

Contactez un technicien agréé pour toute réparation ou maintenance.

Please record the model number, serial number, voltage and purchase date in the area below and have it ready when you call to ensure a faster service.

Model No.
Serial No.
voltage
Purchase Date

Authorized Service Agent Listing Reference the listing provided with the unit Or for an updated listing go to

Website / Site web: www.empero.com.tr

E-mail / Courriel: empero@empero.com.tr

Service Help Desk	
Company	Galaxy Group Corp
Website / Site	www.galaxygroupcorp.com
telephone	(908) 315-3222
fax	-
Address:	899 Newark Tpke, Kearny NJ 07032 États-Unis

IMPORTANT

Make sure that all paper protection and packaging have been removed before operating the device. This device should only be installed in the closed position.



WARNING : The device must be used by trained personnel.

ELECTRIC RANGES

A1 PRODUCT DESCRIPTION

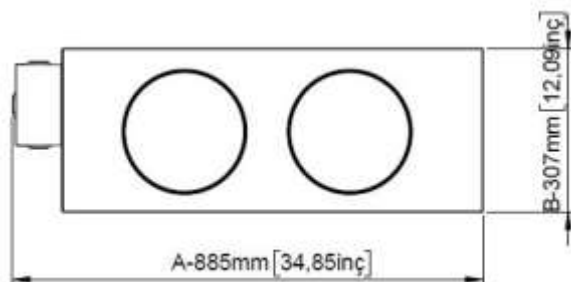
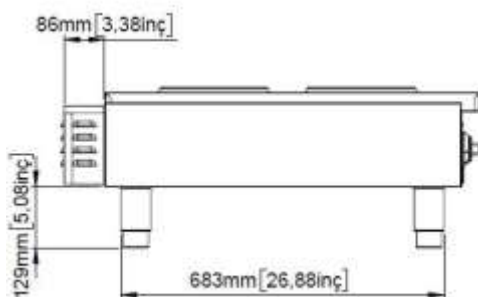
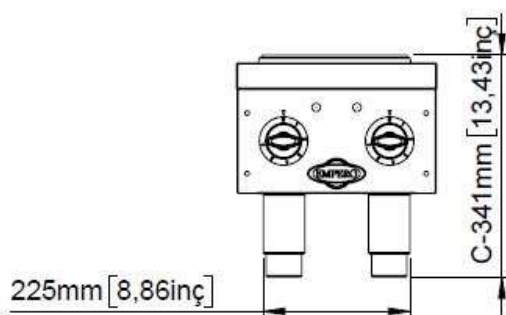
*The Professional Electric Ranges ,that provides high efficiency has been designed to be used in industrial kitchens.

Model	Depth (A) cm inch	Width (B) cm inch	Height(C) cm inch	Approximate Weight	
				Unpacked Kg/Lb	Packed Kg/Lb
HP-12	885 mm 34.85"	307 mm 12.09"	341 mm 13.43"	23 kg 50.70 lb	33 kg 7 2.75 lb
HP-24	885 mm 34.85"	612 mm 24.09"	341 mm 13.43"	36.5 kg 80.46 lb	59.5 kg 131.17 lb
HP-36	885 mm 34.85"	916 mm 3 6.08"	341 mm 13.43"	53 kg 116.84 lb	73 kg 160.93 lb
HPE-16E	403 mm 15.9"	452 mm 17.8"	178 mm 7"	7 kg 15.43 lbs	9 kg 19.84 lbs
HPE-32E	790 mm 31.2"	452 mm 17.8"	178 mm 7"	8 kg 17.63 lbs	8.5 kg 18.73 lbs

A2 TECHNICAL INFORMATION

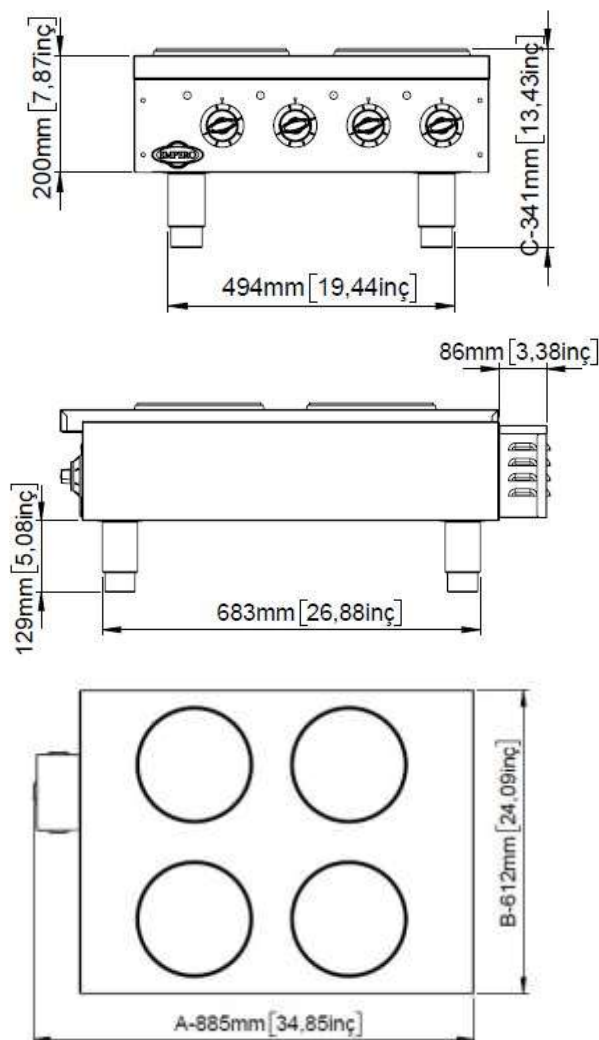
Model	Voltage	KW Total	Amps (max.)	Mounting
HP-12	208 V	4 KW	1P -19.5 A 3P- 11.5 A	Counter top
HP-24	208 V	8 KW	1P- 38.5 A 3P- 22.5 A	Counter top
HP-36	208 V	12 KW	1P- 58 A 3P – 33.5 A	Counter top
HPE-16E	208 V	2 KW	1P -9.6 A 3P- 5.5 A	Portable
HPE-32E	208 V	4 KW	1P -19.2 A 3P- 11 A	Portable

HP-12

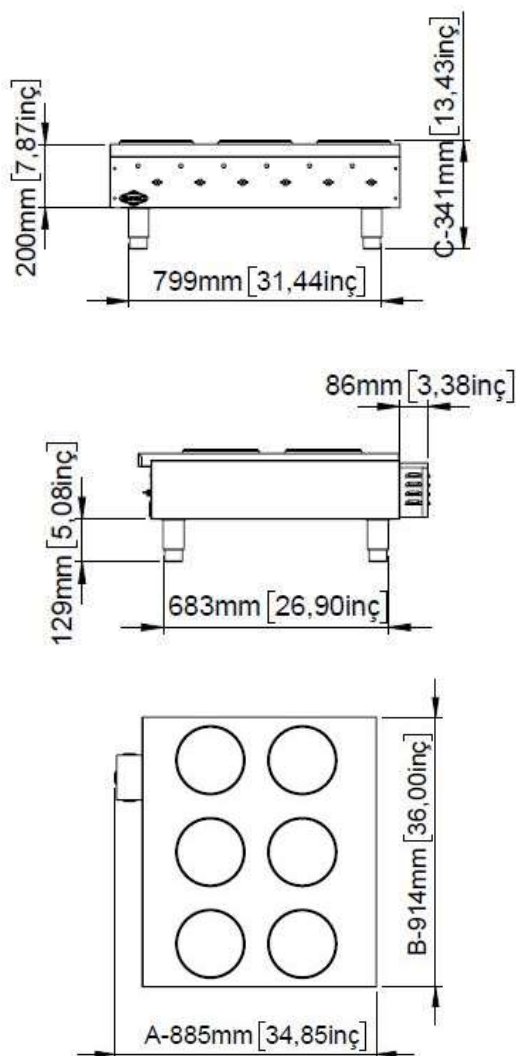


ELECTRIC RANGES

HP-24

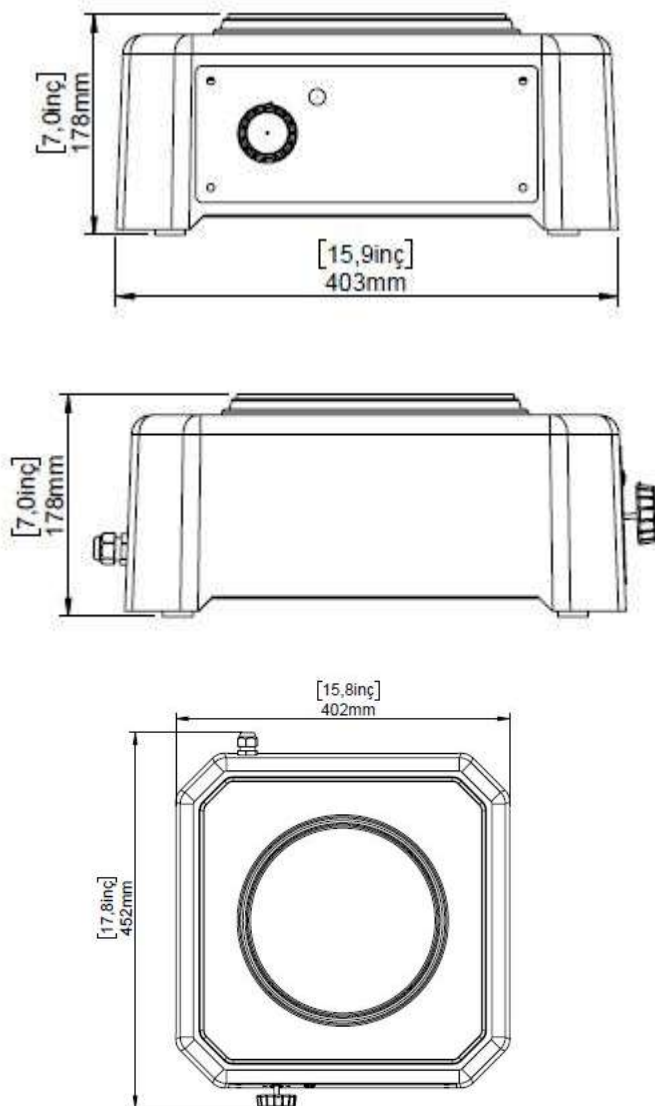


HP-36

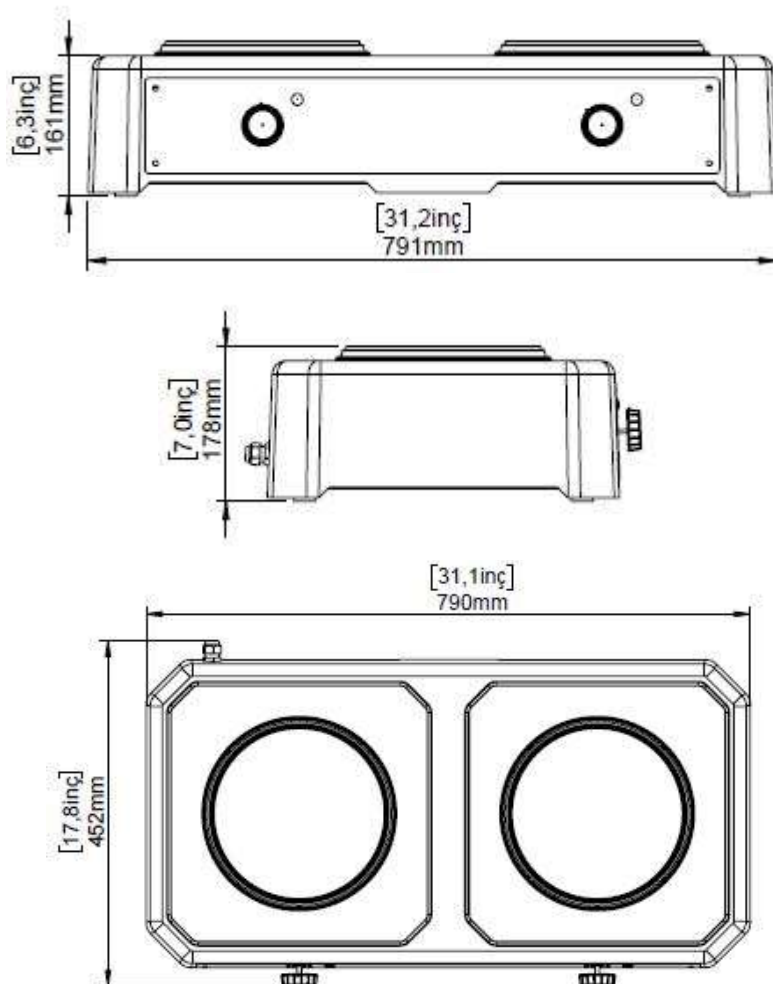


ELECTRIC RANGES

HPE-16E



HPE-32E



ELECTRIC RANGES

A3 TRANSPORTATION

*This appliance can not be moved by hand from area to area. It must be moved on pallet with forklift truck.

A4 UNPACKING

*Please unpack the package according to the security codes and ordinances of current country and get rid from the pack. Parts which contacts with food are produced by stainless steel. All plastic parts are marked by material's symbol.

*Please check that all the parts of appliance had come completely and if they are damaged or not during the shipping.

B INSTALLATION

*Please place the product to straight and sturdy ground, please take necessary steps against possibility of overturn.

*Technician who will serve for installation and service for the appliance must be professional on this subject and must have installation and service licenses by the company.

*Connection to Electric Power Supply must be done by authorized person.

*Please be sure that the voltage connected to appliance must be equal with the voltage which is on appliance's label.



This appliance must be connected to an earthed outlet in accordance with safety rules and standards.

*Appliance's earthing must be connected to earthing line on panel which is nearest to electric installation.

*Connection to the main fuse and leak current fuse must be done in accordance with the current regulations.

*If the location where electric ranges placed is covered with nonflammable heat insulation material, the distance between them must be 5 cm. Otherwise it should be at least 20 cm. The appliance shouldn't be operated under chimney hood.



a) Adequate means must be provided to limit the movement of the appliance without depending on or transmitting stress to the electrical conduit;











b) Restraint device is located on the back side of appliance.



c) The appliance shall be installed using flexible conduit.

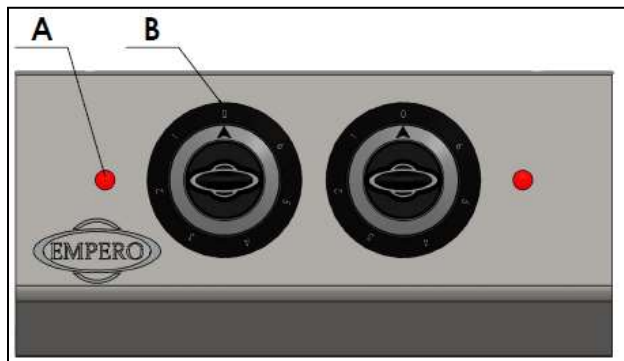
ELECTRIC RANGES

C SAFETY INSTRUCTIONS

-  *Do not use the appliance in insufficient lighted place.
-  *Do not touch the moving attachments while the appliance operates.
-  *Do not install the appliance in the presence of flammable or explosive materials.
-  *Do not operate the appliance when the machine is empty.
-  *Do not load so less or more than appliance's capacity.
-  *Do not attempt to use the appliance without suitable protective equipments.
-  *Because of any reason if there is a fire or flame flare where the appliance is used, turn off all gas valves and electric contactor switch quickly and use fire extinguisher. Never use water to extinguish the fire.
-  *All the damages because of not having earthing connection will not be on warranty.

D OPERATION

*Control Panel;



A : Indicator lamp

B : Heat setting button

*Operating;

- Plug in the appliance.
- Put the cooker on the range.
- Adjust heat setting buttons to desired temperature.
- The range reaches the desired temperature and starts to operate.
- After operation is completed, switch heat setting buttons to (0) position and unplug the appliance.

ELECTRIC RANGES

E CLEANING & MAINTENANCE

➤ **CLEANING AND MAINTENANCE AFTER EVERY USE**

- Always turn off the appliance and disconnect from the power supply before cleaning.
- Clean the outer surface of the appliance with a wet cloth and chrome shiner.
- Do not use abrasive cleaning chemicals as these can leave harmful residues.
- Do not clean the appliance by spraying water directly, otherwise electric motor may get damaged.

➤ **PERIODIC CLEANING AND MAINTENANCE**

- Maintenance should be done by qualified person.
- Get the periodic maintenance of the appliance once in every 15 days.
- Check the heater's electric connection in periodic times.
- Maintenance of the appliance's contactor should be done by compressed air according to frequency of use.

F TROUBLESHOOTING

THE APPLIANCE DOESN'T OPERATE	<ol style="list-style-type: none"> 1. Check if the appliance is plugged in. 2. Check the electrical connections and voltage.
--------------------------------------	--

THE APPLIANCE DOESN'T COOK WELL	<ol style="list-style-type: none"> 1. Check if it is operated at required heat or not.
--	---

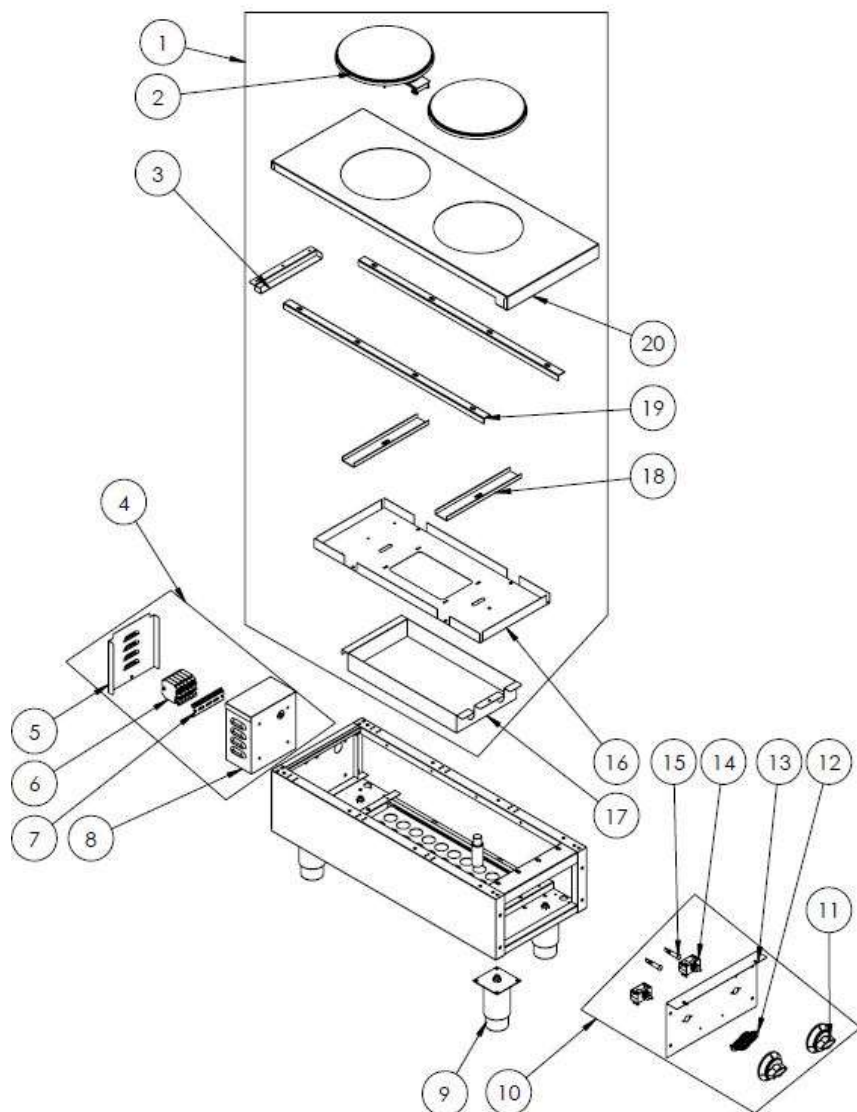
THE APPLIANCE STOPPED	<ol style="list-style-type: none"> 1. The appliance can stop due to low voltage. In this situation check the voltage. 2. When the plates get too hot, they protect themselves and can be operated again after they cool down.
------------------------------	---

<ul style="list-style-type: none"> • If cooking at electric ranges is not done at suitable quality • If any function of security doesn't work <ul style="list-style-type: none"> ➤ Do not use the appliance.
--

***If these problems are still going on, contact with our authorized services.**

ELECTRIC RANGES

G SPARE PART LIST-EXPLODING DRAWING

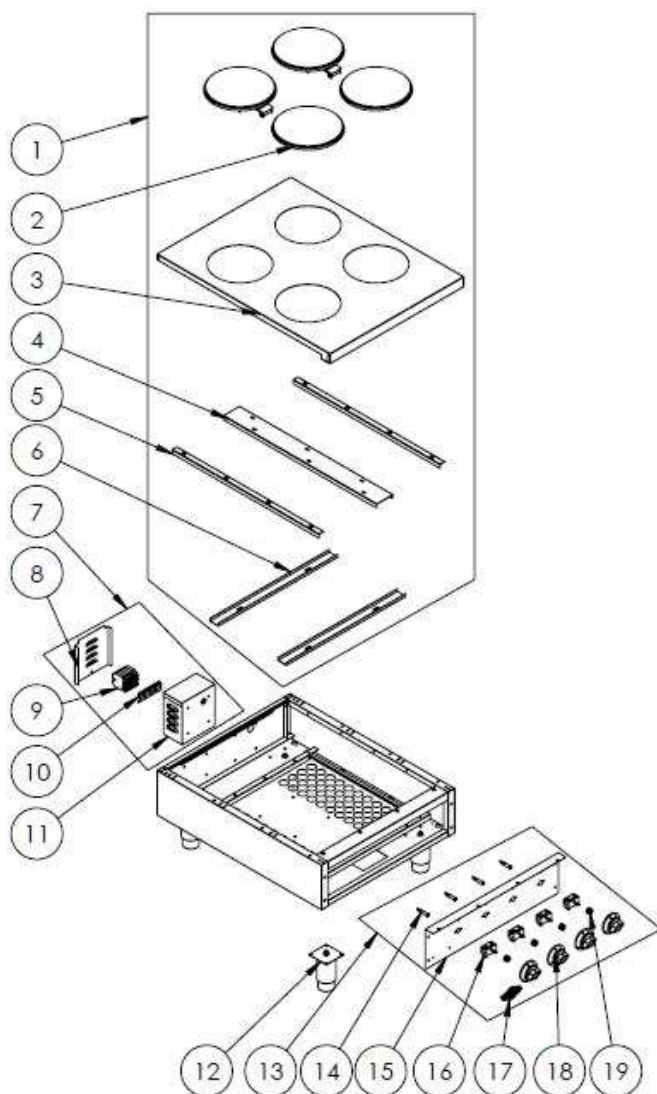


G SPARE PART LIST-EXPLODING DRAWING

PRODUCT CODE : HP-12		
NO	PRODUCT NAME/F	U.CODE
1	ST-UL SET TOP PLAYT MNTJ	EMP.PLS.7KE010
2	HOTPLATE 2 KW Q220 208V 4 OUTLET TERMINAL BLOCK - UL	M.ELK-HOT-YHT-017
3	EMP.PLS.7KE021-UL INSULATION FIXING SC	YSC-KNX.PG7-LZ-1460
4	REAR PANEL MNTJ	EMP.PLS.7IE040-UL
5	EMP.PLS.7IE040-UL-TRAFO COVER SC	YSC-KNX.PG7-PN-0941
6	AVK 10x10 MM RAIL FLANGE (BLUE)	M.ELK-KLM-038
7	VENDING MACHINE RAIL (10CM)	YEL-ERS.PR-KS-0001
8	EMP.PLS.7IE040-UL-TRAFO SC	YSC-KNX.PG7-PN-0940
9	13 CM CHROME PIPE FOOT ASSEMBLY-1	M.AKS-AYK-INX-001
10	ST-UL SET-TOP FRONT PANEL MNTJ	EMP.PLS.7KE010
11	EMP BUTTON 0-6 PRINTED	M.AKS-DGM-EMP-010
12	EMPERO EMBOSSED METAL LABEL (PLUS)	M.AKS-OZL-MTL-006
13	EMP.PLS.7KE010-ST-UL SET-TOP FRONT PANEL	YSC-KNX.PG7-LZ-1369
14	EGO SWITCH 0-6 STAGE 16A 4927215000	M.ELK-SLT-EGO-002
15	INDICATOR LIGHTS 0568 - RED SIGNAL	M.ELK-LMB-SNY-011
16	EMP.PLS.7KE021-UL-PLAYT INSULATION SC	YSC-KNX.PG7-PN-1026
17	EMP.PLS.7KE021-UL-INSULATION COVER SC	YSC-KNX.PG7-PN-1027
18	EMP.PLS.7KE010-ST-UL SET TOP PLATE SUPPORT SC	YSC-KNX.PG7-LZ-1377
19	EMP.PLS.7KE020-ST-UL PLATE BAG SHEET RIGHT-LEFT	YSC-KNX.PG7-PN-0979
20	EMP.PLS.7KE010-ST-UL SET TOP TABLE	YSC-KNX.PG7-LZ-1371

ELECTRIC RANGES

G SPARE PART LIST-EXPLODING DRAWING

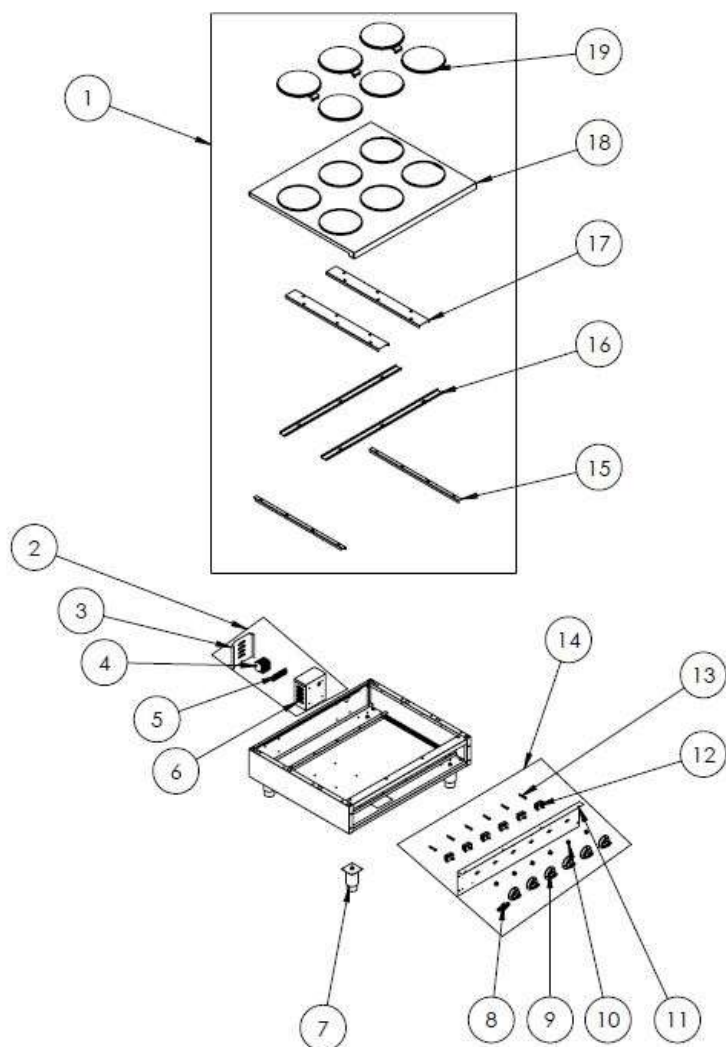


G SPARE PART LIST-EXPLODING DRAWING

PRODUCT CODE : HP-24		
NO	PRODUCT NAME	U.CODE
1	SET-TOP PLAYT MNTJ	EMP.PLS.7KE020-UL
2	HOTPLATE 2 KW Q220 208V 4 OUTLET TERMINAL BLOCK-UL	M.ELK-HOT-YHT-017
3	EMP.PLS.7KE020-UL SET TOP TABLE MONOLITHIC	YSC-KNX.PG7-LZ-1354
4	EMP.PLS.7KE020-ST-UL PLATE BAG SHEET MEDIUM	YSC-KNX.PG7-PN-0980
5	EMP.PLS.7KE020-ST-UL PLATE BAG SHEET RIGHT-LEFT	YSC-KNX.PG7-PN-0979
6	EMP.PLS.7KE020-UL SET-TOP PLATE SUPPORT SC	YSC-KNX.PG7-PN-0981
7	REAR PANEL MNTJ	EMP.PLS.7IE040-UL
8	REAR PANEL MNTJEMP.PLS.7IE040-UL-TRANSFORMER COVER SC	YSC-KNX.PG7-PN-0941
9	AVK 10x10 MM RAIL FLANGE (BLUE)	M.ELK-KLM-038
10	VENDING MACHINE RAIL (10CM)	YEL-ERS.PR-KS-0001
11	EMP.PLS.7IE040-UL-TRAFO SC	YSC-KNX.PG7-PN-0940
12	13 CM CHROME PIPE FOOT ASSEMBLY-1	M.AKS-AYK-INX-001
13	UL SET-TOP FRONT PANEL MNTJ	EMP.PLS.7KE020
14	INDICATOR LIGHTS 0568 - RED SIGNAL LIGHT (DIAMETER 9,8MM)110V- USA	M.ELK-LMB-SNY-011
15	EMP.PLS.7KE020-UL SET-TOP FRONT PANEL	YSC-KNX.PG7-LZ-1353
16	EGO SWITCH 0-6 STAGE 16A 4927215000	M.ELK-SLT-EGO-002
17	EMPERO EMBOSSED METAL LABEL (PLUS)	M.AKS-OZL-MTL-006
18	EMP BUTTON 0-6 PRINTED	M.AKS-DGM-EMP-010
19	FAUCET BUTTON SOCKET 6 MM ELK Ü.	M.AKS-DGM-SKT-002

ELECTRIC RANGES

G SPARE PART LIST-EXPLODING DRAWING



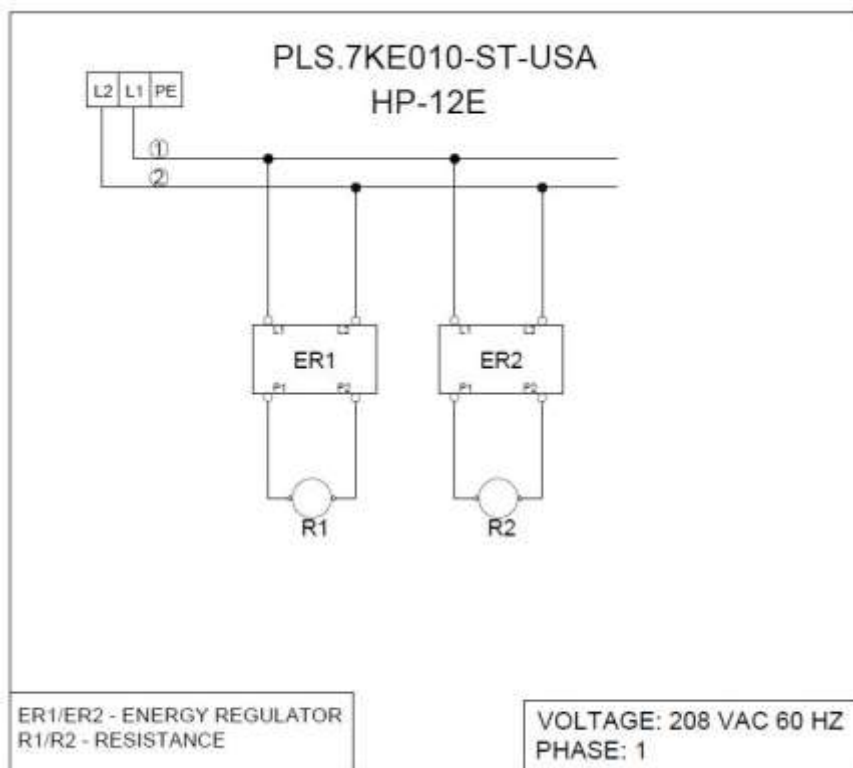
G SPARE PART LIST-EXPLODING DRAWING

PRODUCT CODE : HP-36		
NO	PRODUCT NAME	U.CODE
1	SET-TOP PLAYT MNTJ	EMP.PLS.7KE030-ST-UL
2	REAR PANEL MNTJ	EMP.PLS.7IE040-UL
3	EMP.PLS.7IE040-UL-TRAFO COVER SC	YSC-KNX.PG7-PN-0941
4	AVK 10x10 MM RAIL FLANGE (BLUE)	M.ELK-KLM-038
5	VENDING MACHINE RAIL (10CM)	YEL-ERS.PR-KS-0001
6	EMP.PLS.7IE040-UL-TRAFO SC	YSC-KNX.PG7-PN-0940
7	13 CM CHROME PIPE FOOT ASSEMBLY-1	M.AKS-AYK-INX-001
8	EMPERO EMBOSSED METAL LABEL (PLUS)	M.AKS-OZL-MTL-006
9	EMP BUTTON 0-6 PRINTED	M.AKS-DGM-EMP-010
10	FAUCET BUTTON SOCKET 6 MM ELK Ü.	M.AKS-DGM-SKT-002
11	EMP.PLS.7KE030-ST-UL FRONT PANEL	YSC-KNX.PG7-LZ-1359
12	EGO SWITCH 0-6 STAGE 16A 4927215000	M.ELK-SLT-EGO-002
13	INDICATOR LIGHTS 0568 - RED SIGNAL LAMP (DIAMETER 9,8MM) 110V- USA	M.ELK-LMB-SNY-011
14	FRONT PANEL MNTJ	EMP.PLS.7KE030-ST
15	EMP.PLS.7KE020-ST-UL PLATE BAG SHEET SAGSOL	YSC-KNX.PG7-PN-0979
16	EMP.PLS.7KE031-UL-PLYT SUPPORT SC	YSC-KNX.PG7-LZ-1329
17	EMP.PLS.7KE020-ST-UL PLATE BAG SHEET MEDIUM	YSC-KNX.PG7-PN-0980
18	EMP.PLS.7KE030-ST-UL SET TOP TABLE YEKPARE	YSC-KNX.PG7-LZ-1358
19	HOTPLATE 2 KW Q220 208V 4 OUTLETS CONNECTED-UL	M.ELK-HOT-YHT-017

ELECTRIC RANGES

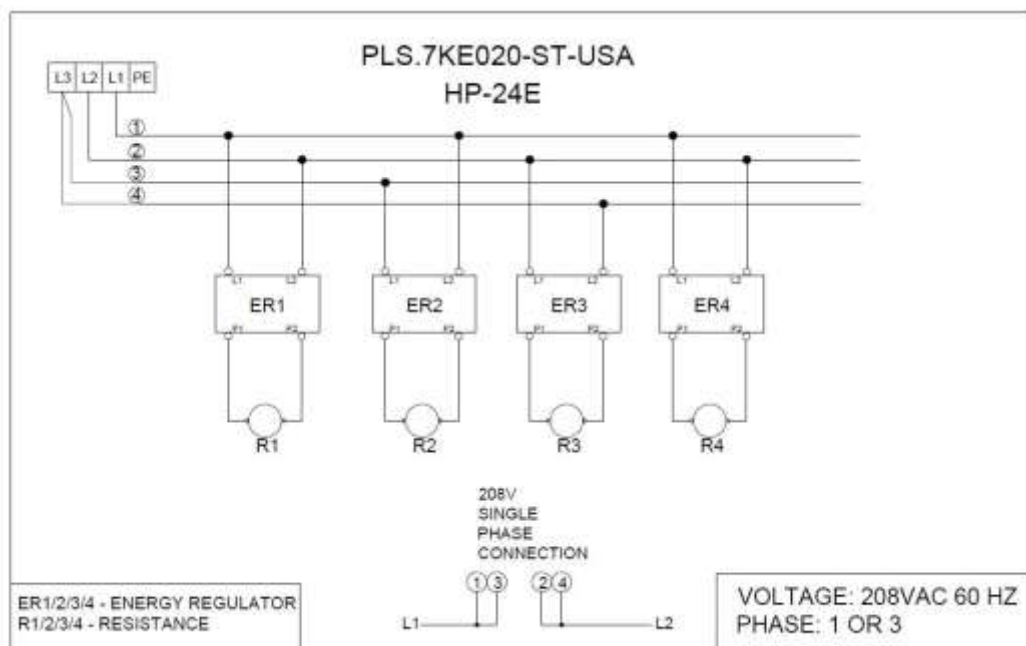
H ELECTRICAL CIRCUIT DIAGRAM

HP-12



H ELECTRICAL CIRCUIT DIAGRAM

HP-24



ELECTRIC RANGES

H ELECTRICAL CIRCUIT DIAGRA

HP-36

