



PROFESSIONAL AIR MOVER
OWNER'S MANUAL

Model: P-100A / P-130A
(115V / 60Hz)

XPOWER Manufacture, Inc.
240 Clary Avenue
San Gabriel, CA 91776, USA
Tel: 626-285-3301, Fax: 626-285-3302
website: xpower.com



PLEASE READ AND SAVE THESE INSTRUCTIONS

Index

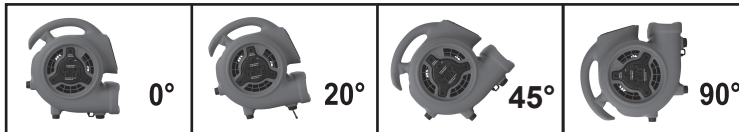
Introduction	2
Operation	3
Safety Instructions	4
Maintenance Instructions/ Troubleshooting	5
Specification	6
Warranty / Service	7
Parts List	8
Warranty Registration Form	10

Introduction

XPOWER Mini Air Movers P-100A and P-130A are certified professional level multifunctional utility blower fans with the most efficient engineering design for retail market.

Features:

- Low power draw with high velocity air flow from 500 to 700 CFM.
- Super quiet motor and super lightweight.
- Easy carrying handle and stackable up to 4 units high.
- Easy and quick to disassemble for thorough cleaning and service.
- Safety certified 10' power cord.
- Easy cord wrap on handle.
- 3-speed switch.
- Durable and rugged housing.
- 4 air flow positions (0°, 20° Kickstand, 45° and 90°).



AIR MOVER STORAGE:

Air Movers can be stacked (up to 4) on their sides for storage.

NOTICE:

Stacking feature is not secure for transportation.



Operation

XPOWER Mini Air Movers are intended to move air and to dry small areas where the large air mover is not applicable such as crawl spaces, inside cabinets, under counters, inside ceilings, basements, etc. The Mini Air Mover can also be used as a high velocity fan for household use.

1. XPOWER air movers are shipped ready-to-use. Prior to plugging the unit into the power source, inspect completely for any shipping damage.
2. Plug the electrical cord into the power outlet.
3. Carefully place the Air Mover on a stable, flat, dry surface.
4. The unit is capable to be used at 4 different angles to direct airflow.
5. Turn the switch to select desired speed, while making sure the unit operates normally.
6. To reduce the risk of injury, close supervision is necessary when the appliance is used near children. Do not allow children to play with or around an air mover at any time.



Daisy-chain Feature

If utilizing the Daisy-chain feature, only allow up to two additional air movers or other devices running together on total 12 AMPS circuit. P-100A & P-130A air movers have an on-board circuit breaker. If the auxiliary outlet overloads, the circuit breaker will trip. If the breaker does trip, unplug the units and press the circuit breaker Reset button. Plug the units back into the power source and turn on the switch.

Safety Instructions

1. To prevent electric shock, do not operate the unit in standing water. Never plug in or unplug the unit with wet hands or while standing in water.
2. To avoid risk of injury, do not direct air flow at face or body.
3. To reduce the risk of fire or electric shock, do not use the Mini Air Mover with any solid-state speed control device.
4. Use only with GFCI protected receptacles. Please contact a qualified electrician for verification and / or installation of a GFCI receptacle if necessary.
5. Do not operate the Mini Air Mover with a damaged cord or plug. Discard the unit or return it to an authorized service facility for examination and/or repair.
6. Unplug the Mini Air Mover from the power supply before servicing or cleaning. Do not run the power cord under carpeting. Do not cover the power cord with throw rugs, runners, or similar coverings. Place the power cord away from traffic area to prevent tripping.
7. Do not allow children to play with or around the Mini Air Mover at any time.
8. Do not move or carry the Mini Air Mover while the unit is operating.
9. To reduce the risk of injury, close supervision is necessary when an appliance is used near children.
10. An electronic instruction manual can be obtained through manufacture's website: xpower.com.

Maintenance Instructions

1. Always disconnect the air mover from its power source before performing any maintenance or cleaning.
2. Never clean the unit with water directly.
3. When not in use, unplug and store the air mover in a dry indoor place out of reach of children.
4. To keep the Mini Air Mover clean, use a damp cloth to wipe the surface of the housing.

Troubleshooting

For any problems not listed below, call your local distributor or contact our Service Department at 1-855-855-8868

PROBLEM	POSSIBLE CAUSE	SOLUTION
Air Mover not running	No power input	Plug in the Air Mover; check circuit breaker
	Switch not turned on	Turn on switch
	Air Mover fan wheel jammed	Remove material jamming fan wheel
	Intake or exhaust blocked	Turn unit off and allow to cool, then remove blockage
Air Mover vibrates	Accumulation of dirt on fan blades	Clean Air Mover fan blades

Specifications

Model	P-100A	P-130A
Volt / Frequency	115V / 60Hz	115V / 60Hz
Power	1/8 HP	1/5 HP
Amp	1.5 Amps	2.0 Amps
Rated Airflow (On High)	500 CFM	700 CFM
RPM (Low / Medium / High)	650 / 950 / 1200	1000 / 1250 / 1500
Speeds	Three	Three
Built-In Power Outlet / Daisy Chain	Yes	Yes
Positions	4 (0°, 20° Kickstand, 45°, 90°)	4 (0°, 20° Kickstand, 45°, 90°)
Unit / Box Weight	9.5 Lbs. / 11.2 Lbs.	9.3 Lbs. / 11.0 Lbs.
Unit / Box Size (L x W x H)	10.7"x12.4"x13.3" / 13.6"x12.8"x11"	10.7"x12.4"x13.3" / 13.6"x12.8"x11"
Power Cord (Length/Size)	10'/14AWG	10'/14AWG
Overheating Protection	Thermally Protected	Thermally Protected
Housing	Injection Mold / Polypropylene (PP)	Injection Mold / Polypropylene (PP)
Safety Certificates	ETL / C-ETL	ETL / C-ETL

XPOWER Limited Warranty (USA)

XPOWER's Limited Warranty covers the unit (excluding POWER CORD) from defects in material and craftsmanship. The Warranty covers normal use for a term of one year from the original date of purchase including parts, labor and one way shipping. Non-contiguous states must pay for roundtrip freight. A purchase receipt must be provided.

Important!

This warranty does not cover or apply to defects due directly or indirectly to misuse, abuse, disassembly, alteration, corrosive chemicals, improper voltage, fire, flood, negligence, accident, improperly or incorrectly performed maintenance or repair, or failure to perform necessary maintenance or repair, or if the use of this product is not in compliance with the instructions and specifications for its use.

Service

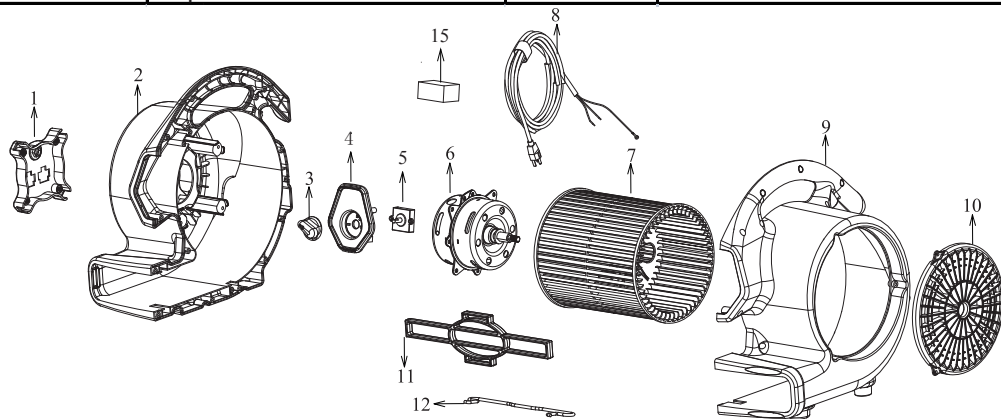
For Warranty service and parts replacement (US users only), you must:

- A. Call 1-855-855-8868 for a RMA (Return-Merchandise-Authorization) number.
- B. Have original proof of purchase.
- C. Use the original undamaged packaging or an industrial certified packaging method.

End user will be responsible to ship the unit (with RMA Number showing on the shipping label) to the XPOWER Service Department. XPOWER will inspect, assess and advise the repairs needed and the applicable cost, if any. For users outside the US, please contact an XPOWER Distributor in your country or region for Warranty service and parts replacement.

100 Series Parts List

Item No.	Parts Name	Item No.	Parts Name
1	Grid Cover (Motor Side)	2	Left Housing
3	Switch Knob	4	Switch Plate
5	Switch	6	Motor
7	Fan	8	Power Cord
9	Right Housing	10	Grid Cover (Fan Side)
11	Air Outlet Grid Cover	12	Kick Stand
13	Rubber Feet (Not Shown)	14	Screws and Nuts (Not Shown)
15	Capacitor		



XPOWER Retail Product Line

Airrow Pro Multi-Use Duster: A-2

Pet Dryers: B-2, B-53, B-55

Air Pump: AP-1031A, AP-1131, AP-138A, AP-145A

Air Movers: P-100A, P-130A, P-200AT, P-230AT

Scented Air Movers: P-150N, P-250AT, P-250NT, P-260AT, P-260NT

Inflatable Blowers: BR-2C01A, BR-201A, BR-232A, BR-252A



A-2



BR-2C01A



AP-1031A



B-55

Warranty Registration (for US user only)

For your product warranty, please complete and mail / fax this form to XPOWER MANUFACTURE, INC.

Address: 240 Clary Ave., San Gabriel, CA 91776.

Tel: 626-285-3301

Fax: 626-285-3302

(For your convenience, register your product online at xpower.com)

Company Name / Contact Person / Title _____

Address _____ City _____

State / Province _____ Zip _____ Country _____

Phone _____ Fax _____ E-mail _____

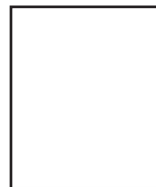
Model # _____ **Serial #:** _____

Date of Purchase ____/____/____ **Purchased From** _____

Additional Comments / Suggestions _____



From: _____



TO:

XPOWER Manufacture, Inc.
240 Clary Avenue
San Gabriel, CA 91776, USA

