

NL708 (XWA11V)

Walk-In Temp / Door /Alarm / Light Module



1. General Description	1
2. General Warnings	1
3. Interface	2
4. Temp Alarms Setting	3
5. Programming	3
6. Light Management	4
7. Installation and Mounting	4
8. Electrical Connections	4
9. Use of the Programming “Hot Key”	5
10. Alarm Signals	5
11. Technical Data	6
12. Connections	6
13. Parameter Map	7
14. Parameter List	8
Quick Sheet	9
Parts Lists	10
Dwg. No. A32907 Light Manager with Options	11
Dwg. No. B10007 Wiring Diagram Light Manager with Options	12
Dwg. No. A32942 Light Manager Retrofit Kit	13
Dwg. No. B10020 Wiring Diagram Retro Kit	14
Occupancy Sensor for Light Operation Settings	15
Remote Buzzer Installation	17

Operating Instructions Alarm/Light Module XWA11V

XWA11V

Walk-In Temp / Door /Alarm / Light Module



1. GENERAL DESCRIPTION

Model **XWA11V**, 100x64 mm format, is a microprocessor-based controller, suitable for temperature monitoring and alarming in a walk-in cooler or freezer. It is provided with two (2) Relay Contacts to control lights and an external alarm. It is provided with one (1) NTC probe input for temperature measurement. The unit has 2 Digital Inputs, one for a Door Switch and the 2nd as an optional Panic Switch. See the catalog for optional accessories. One 5Pin Input allows the user to program the parameter list with a “Hot Key” (see section 9)

Note: The default settings are listed in the back of this manual. They are set for Coolers (Medium Temp). For Freezers (Low Temp) you MUST Change the ALL and ALU settings. See Section 4.0

2. GENERAL WARNINGS

2.1 PLEASE READ BEFORE USING THIS MANUAL

- This manual is part of the product and should be kept close to the instrument for easy and quick reference.
- The instrument shall not be used for purposes different from those described hereunder. It cannot be used as a safety device.
- Check the application limits before proceeding.

Note: If equipped with a battery backup, the battery must be installed after the walk-in has reached its operating temperature.

2.2 SAFETY PRECAUTIONS

- Check if the supply voltage is correct before connecting the instrument.
- Do not expose the back of the instrument to water or moisture: use the controller only within the operating limits avoiding sudden temperature changes with high atmospheric humidity to prevent the formation of condensation.
- Warning: disconnect all electrical connections before performing any maintenance operation.
- Fit the probe where it is not damaged by the end-user. The instrument must not be opened.
- In case of failure or faulty operation send the instrument back to the distributor (see address) with a detailed description of the fault.
- Consider the maximum current that can be applied to each relay (see Technical Data).
- Ensure that the wires for probes, loads and the power supply are separated and far enough from each other, without crossing or intertwining, or you may get bad temperature readings.
- Be sure to seal any J-box with RT sealant to prevent cold and moisture intrusion.

Operating Instructions Alarm/Light Module XWA11V

3. INTERFACE



3.1 KEY FRONT PANEL OPERATION



In Programming Mode press to **select** a parameter or to **confirm** an operation.
Press and hold this key for more than 5 s **to turn the controller OFF**.
Press and hold this key for more than 1 s **to turn the controller back ON**.



Press to see the HIGH Temp ALARM (**ALU** parameter)



Press to see the LOW Temp ALARM (**ALL** parameter)



In Programming Mode press to browse parameter codes.

Press to increase the displayed value.

Press to mute the buzzer (+ relay) when an ALARM is happening.

Hot key programming: with the instrument on, insert the hot key and then press the UP button.



In Programming Mode press to browse parameter codes.

Press to decreases the displayed value.



Switch ON and OFF the light of the cold room

KEY COMBINATIONS: PRESS SIMULTANEOUSLY



+



To lock and unlock the Keyboard.



+



To enter the Programming Mode.



+



To exit the Programming Mode.



+



To enter a new value for the HIGH Temp ALARM (**ALU**).



+



To enter a new value for the LOW Temp ALARM (**ALL**).

3.2 USE OF LEDS



Each LED function is described in the following table:

LED	MODE	Function
	ON	ALARM signaling
	ON	The light is on
°C	ON	Celsius degrees operation
°F	ON	Fahrenheit degrees operation



Operating Instructions Alarm/Light Module XWA11V

4. TEMP ALARM SETTINGS

4.1 HOW TO SET THE MIN TEMPERATURE ALARM




- **To modify the minimum (LOW) Temp ALARM:** hold the  +  keys pressed for 3 s until the minimum Temp alarm is displayed.
- Change the value using the **UP** and **DOWN** keys.
- Press the **SET** key to confirm the new value and exit.

4.2 HOW TO SET THE MAX TEMPERATURE ALARM

- **To modify the max (HIGH) Temp ALARM:** hold the  +  keys pressed for 3 s until the max Temp alarm is displayed.
- Change the value using the **UP** and **DOWN** keys.
- Press the **SET** key to confirm the new value and exit.

5. PROGRAMMING

5.1 HOW TO CHANGE A PARAMETER VALUE MAIN MENU

1. Enter the Programming Mode by pressing the **SET** and **DOWN** key for **3s** ( and  will start blinking).
2. Select the required parameter. By using the **UP** or **DOWN** KEY
3. Press the “**SET**” key to display its value (now only the  LED is blinking).
4. Use “**UP**” or “**DOWN**” to change its value.

Press “**SET**” to store the new value and move to the following parameter.




To exit: Press **SET + UP** or wait 15 s without pressing a key.

NOTE: the set value is stored even when the procedure is exited, by waiting the time-out to expire.

5.2 THE HIDDEN MENU (PR2)

The hidden menu includes all the parameters of the instrument.

5.2.1 HOW TO ENTER THE HIDDEN MENU (PR2)

1. Enter the Programming Mode by pressing the Set + **down** key for **3s** ( and  starts blinking).
2. When a parameter is displayed, **release and re-press** the **SET + down** for more than **7s**.
3. The **Pr2** label will be displayed immediately followed from the HY parameter. **NOW YOU ARE IN THE HIDDEN MENU.**
4. **Select** the required parameter as above
5. Press the “**SET**” key to display its value (Now only the  LED is blinking).
6. Use “**UP**” or “**down**” to change its value.
7. Press “**SET**” to store the new value and move to the following parameter.

To exit: Press **SET + up** or wait **15s** without pressing a key.

NOTE: the set value is stored even when the procedure is exited by waiting the time-out to expire.

5.2.2 HOW TO MOVE A PARAMETER FROM THE HIDDEN MENU TO THE FIRST LEVEL AND VICEVERSA

Each parameter present in the HIDDEN MENU can be removed or put into “THE FIRST LEVEL” (user level) by pressing “**SET + down**”.

In HIDDEN MENU when a parameter is present in First Level the **decimal point LED is on**.

5.3 HOW TO LOCK THE KEYBOARD



1. Keep pressed for more than **3s** the **UP** and **DOWN** keys.
2. The “**POF**” message will be displayed and the keyboard will be **locked**. At this point it will be possible only to see the Set Point or the MAX or MIN Temp stored
3. If a key is pressed more than **3s** the “**POF**” message will be displayed.

Operating Instructions Alarm/Light Module XWA11V

5.4 TO UNLOCK THE KEYBOARD

Keep pressed together for more than **3s** the **UP** and **DOWN** keys. The **"PON"** message is displayed

6. LIGHT MANAGEMENT

6.1 TIMED REGULATION: i1L = Y

With **i1L = y** the light remains on at least for the **LHt** parameter.

The **LHt** timer is re-initialized every time the light button is pushed.

With **LHt=0** the light remains on until the light button is pushed again.

The light is switched on every time one of the following conditions happens:

- the door is open (**i1F = dor**)
- the presence sensor is activated (**i2F = LHt**)
- the light button is pushed

The light is switched off when all the following conditions happen:

- the **LHt** timer is exhausted
- the door is closed (**i1F = dor**)
- the presence sensor is de-activated (**i2F = LHt**)
- Light button regulation: **i1L = n**

The lights will flash (for 2 minutes) every 20 seconds for the **FLH** time (0-5 min) at the end of the **LHt** time as a warning that the lights are about to turn off (for incandescent and LED lights only).

The **light button has a higher priority than digital inputs** therefore:

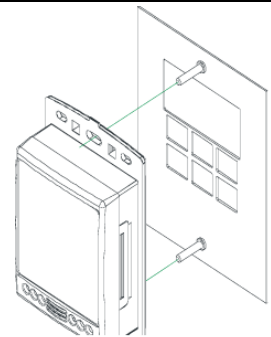
- if the light was switched on by button the digital input can not modify its status.
- if the light was switched on by digital input, the light button can modify its status.

7. INSTALLATION AND MOUNTING

7.1 MOUNTING OF XWA11V – PR10000

The **XWA11V** must be mounted on vertical panel, in a J-Box (Steel City PN 68371-1/2) or equal or wall mounted using an appropriate enclosure.

The Ambient Temp range for correct operation is 32 – 131°F (0-55°C). Avoid installation in places subject to strong vibrations, corrosive gases, excessive dirt or humidity. The same recommendations apply to probes.



8. ELECTRICAL CONNECTIONS

The instrument is provided with 1/4" fast-on terminal blocks to connect cables with a cross section up to .110" for the digital and analog inputs. Relays and power supply have a Fast-on connection (.250"). For supply connections, use 14 AWG or larger copper or CU wire only rated at least 90°C (194°F). Before connecting cables make sure the power supply complies with the instrument requirements. Separate the probe cables from the power supply cables, from the outputs and the power connections. Do not exceed the maximum current allowed on each relay and in case of heavier loads use a suitable external relay.

N.B. Maximum current allowed for all the loads is 15A.

8.1 PROBE CONNECTIONS

The probe shall be mounted with the bulb upwards to prevent damages due to casual liquid infiltration. It is recommended to place the thermostat probe away from air streams to correctly measure the average room temperature. The probe can be extended up to 300 ft. Check calibration when running long lengths over 100ft.

Operating Instructions Alarm/Light Module XWA11V

9. USE OF THE PROGRAMMING “HOT KEY “

9.1 HOW TO PROGRAM A HOT KEY FROM THE INSTRUMENT (UPLOAD)

1. Program one controller with the front keypad.
2. When the controller is ON, insert the “Hot key” and push **UP** key; the “uPL” message appears followed a by flashing “End”
3. Push “SET” key and the **End** will stop flashing.
4. Turn OFF the instrument remove the “Hot Key”, then turn it ON again.

NOTE: the “Err” message is displayed for failed programming. In this case push UP key again if you want to restart the upload again or remove the “Hot key” to abort the operation.

9.2 HOW TO PROGRAM AN INSTRUMENT USING A HOT KEY (DOWNLOAD)

1. Turn OFF the instrument.
2. Insert a **programmed “Hot Key” into the 5 PIN receptacle** and then turn the Controller ON.
3. Automatically the parameter list of the “Hot Key” is downloaded into the Controller memory, the “doL” message is blinking followed a by flashing “End”.
4. After 10 seconds the instrument will restart working with the new parameters.
5. Remove the “Hot Key”.

NOTE the message “Err” is displayed for failed programming. In this case turn the unit off and then on if you want to restart the download again or remove the “Hot key” to abort the operation.

10. ALARM SIGNALS

Message	Mode	Cause	Outputs
“P1”	Flashing	Probe failure	Alarm output ON
“PoF”	Flashing (3s)	Keyboard locked	Not changed
“Pon”	Flashing (3s)	Keyboard un-locked	Not changed
“HA”	Alternated with temp	Maximum T° alarm	Alarm output ON;
“LA”	Alternated with temp	Minimum T° alarm	Alarm output ON;
“dA”	Alternated with temp	Door switch alarm	Alarm output ON;
“EA”	Alternated with temp	External alarm	Alarm output ON;
“PAn”	Alternated with temp	Serious external alarm	Alarm output ON;
dEF	Alternated with temp	Defrost is running	Not changed

The alarm message is displayed until the alarm condition is reset.

10.1 SILENCING BUZZER

Once the alarm signal is detected the buzzer can be silenced by pressing the **UP** key.

10.2 ALARM RECOVERY

Probe alarms: “P1” (probe1 faulty), “P2”; they automatically stop 10s after the probe restarts normal operation. Check connections before replacing the probe.

T° alarms “HA” and “LA” automatically stop as soon as the thermostat T° returns to normal values or when the defrost starts.

Door switch alarm “dA” stops as soon as the door is closed.

External alarms “EAL”, “BAL” stops as soon as the external digital input is disabled.

11. TECHNICAL DATA

Accuracy : $\pm 1^{\circ}\text{F}$

Operating Instructions Alarm/Light Module XWA11V

13. PARAMETER MAP

LABEL	DESCRIPTION	VALUE	LEVEL	RANGE
ot	Thermostat probe calibration	0	Pr2	[-21°F - 21°F]
CF	Temperature measurement unit	F	Pr2	°C - °F
rES	Resolution (only for °C)	in	Pr2	dE - in
UT	Display update	60	Pr2	0 - 255 (sec.)
OnF	Off function enabling	y	Pr2	n - Y
ALU	High temperature alarm setting (med temp / low temp)	50 / 30	Pr1	ALL-302° F
ALL	Low temperature alarm setting (med temp / low temp)	30 / -20	Pr1	°-58 - ALU
AFH	Temperature alarm differential	2	Pr2	1°F - 45°F
ALd	Temperature alarm delay	30	Pr1	0 - 255 (min.)
dAo	Delay of temperature alarm at start-up	1.3	Pr2	0.0 - 24.0 Hrs.
EdA	Alarm delay at the end of defrost	30	Pr2	0 - 255 (min.)
dot	Delay of temperature alarm after closing the door	15	Pr2	0 - 255 (min.)
LHt	Light timer	15	Pr1	0 - 255 (min.)
FLH	Light Flashing Timer (time before light goes out that it will flash) (for incandescent & LED lights only)	2	Pr1	0 - 5 (Min)
doA	Open door alarm delay	15	Pr1	0 - 255 (min.)
oA1	First relay configuration	ALr	Pr2	ALr - LHt - OnF
oA2	Second relay configuration	LHt	Pr2	ALr - LHt - OnF
AOP	Alarm relay polarity	oP	Pr2	OP - CL
i1P	Digital input 1 polarity	CLoP	Pr2	OP - CL
i1L	Door switch to turn light ON	y	Pr2	n - Y
i1F	Digital input 1 operating mode	dor	Pr2	EAL - dor - dEr - LHt
i2P	Digital input 2 polarity	cL	Pr2	OP - CL
i2F	Digital input 2 operating mode	PAn	Pr2	EAL - Pan - dFr - LHt
did	Time interval/delay for digital input alarm	0	Pr2	0 - 255 (min.)
tbA	Alarm relay disabling	n	Pr2	n - Y
PbC	Kind of probe	ntc	Pr2	PtC - nTC
dP1	Real temperature Probe 1		Pr2	(probe value)
rEL	FW release		Pr2	read only
Ptb	Parameter map		Pr2	read only

Operating Instructions Alarm/Light Module XWA11V

14. PARAMETER LIST

- Ot Thermostat probe calibration:** (-12.0÷12.0°C/ -21÷21°F) allows to adjust possible offset of the thermostat probe.
- CF T measurement unit:** °C = Celsius; °F = Fahrenheit. When the measurement unit is changed the Set Point and the values of some parameters have to be modified.
- rES Resolution (for °C):** (in = 1°C; dE = 0.1 °C) allows decimal point display.
- Ut Display update:** The time delay of the T readout (0÷255s)
- onF Off function enabling:** **n** = off function disabled; **y** = off function enabled;
- ALU High T° alarm setting:** (ALL ÷ 150°C or 302°F);
when this T° is reached and after the ALd delay time the HA alarm is enabled.
- ALL Low T° alarm setting:** (- 50°C or -58°F ÷ ALU)
when this T° is reached and after the ALd delay time, the LA alarm is enabled,.
- AFH T° alarm differential:** (0,1÷25,5°C; 1÷45°F) differential for T° alarm Set Point and fan regulation Set Point, always a positive value
- ALd T° alarm delay:** (0÷255 min) time interval between the detection of an alarm condition and the corresponding alarm signaling.
- dAO Delay of T° alarm at start-up:** (0min÷23h 50min) time interval between the detection of the T° alarm condition after the instrument power on and the alarm signaling.
- EdA Alarm delay at the end of defrost:** (0÷255 min) Time interval between the detection of the T° alarm condition at the end of defrost and the alarm signaling.
- dot Delay of T° alarm after closing the door:** (0÷255 min) Time delay to signal the T° alarm condition after closing the door.
- LHt Light timer:** (0÷255 min) The time the light will stay on after pressing the light switch on the keyboard.
- FLH Light Flashing:** (0÷5 min) The light will “double flash” every 20 seconds during the FLH time period before turning off after the LHt time. (For incandescent and LED lights only.)
- doA Open door alarm delay:**(0÷255 min) delay between the detection of the open door condition and its alarm signaling: the flashing message “dA” is displayed.
- oA1 First relay configuration: (14-15): ALr** = alarm; **LHt** = light; **onF** = on/off relay
- oA2 Second relay configuration: (14-16): ALr** = alarm; **LHt** = light; **onF** = on/off relay
- AOP Alarm relay polarity:** cL = closing contacts; oP = opening contacts.
- i1P Digital input 1 polarity (1-2):** CL : the digital input is activated by closing the contact;
OP: the digital input is activated by opening the contact
- i1L Door switch to turn light ON(1-2):** (y / no) To turn the light ON automatically when the door is open. The light will turn off based on LHt . Keyboard switch must be turned ON first.
- i1F Digital input 1 operating mode(1-2):** **EAL** = external alarm; **dor** = door switch; **dFr** = A defrost is running; **LHt** = keep light ON (signal from occupancy sensor) override LHt.;
- i2P Digital input 2 polarity (1-3):** CL : the digital input is activated by closing the contact;
OP: the digital input is activated by opening the contact
- i2F Digital input 2 operating mode:** configure the digital input function:
EAL = External alarm;
PAn =Panic alarm;
dFr = A defrost is running; (need external CT's)
LHt = Keep light ON (signal from occupancy sensor) overrides LHt.
- did Time interval/delay for digital input alarm:**(0÷255 min.) If I2F=EAL or PAn (external alarms), “did” parameter defines the time delay between the detection and the successive signaling of the alarm.
- tbA Alarm relay & Buzzer disabling:** (y ; no)
- Pbc Type of probe (PTC, NTC)**
- dP1 Probe 1 T**
- rEL Software release** for internal use.
- Ptb Parameter table code:** read only.

Operating Instructions Alarm/Light Module XWA11V

QUICK SHEET

XWA11V Walk-in Alarm / Door / Alarm / Light Unit Operation Manual

In Normal Operation the Indicator will display the temperature. **36° F**

CHECK ALARM SETPOINTS (Cooler HA = 50°F, LA = 30°F / Freezer HA = 30°F, LA = -20°F)



To SEE the HIGH Alarm Set Point Press and release the Key, It will display the High Set Point for 5 seconds. The Temp alarm will go ON if the temp exceeds the Set Point after 15 minutes. The display will read **HA** alternating with the Temp.



To SEE the LOW Alarm Set Point Press and release the Key it will display the Low Set Point for 5 seconds. The Temp alarm will go ON if the temp exceeds the Set Point after 15 minutes. **LA**, alternating with the Temp.

CHANGE ALARM SETPOINTS



1. To Change the HIGH Alarm Set Point Press BOTH the + for 7 seconds and the LED above the will blink.



2. Release and scroll UP to adjust the Set Point up, or Scroll DOWN to adjust the Set point down.



3. Press to confirm the change.



4. For Low Set Point repeat the procedure with the +

LIGHT OPERATION



Press the light switch to turn ON the inside light; it will automatically go OFF after 15 minutes.

DOOR SWITCH

If the door switch is used opening the door will automatically turn the light ON, and will automatically go OFF after 15 minutes.

If the Door is left open longer than 15 minutes the DOOR Alarm will go off, **dA** alternating with the temperature reading.

ALARM SIGNALS

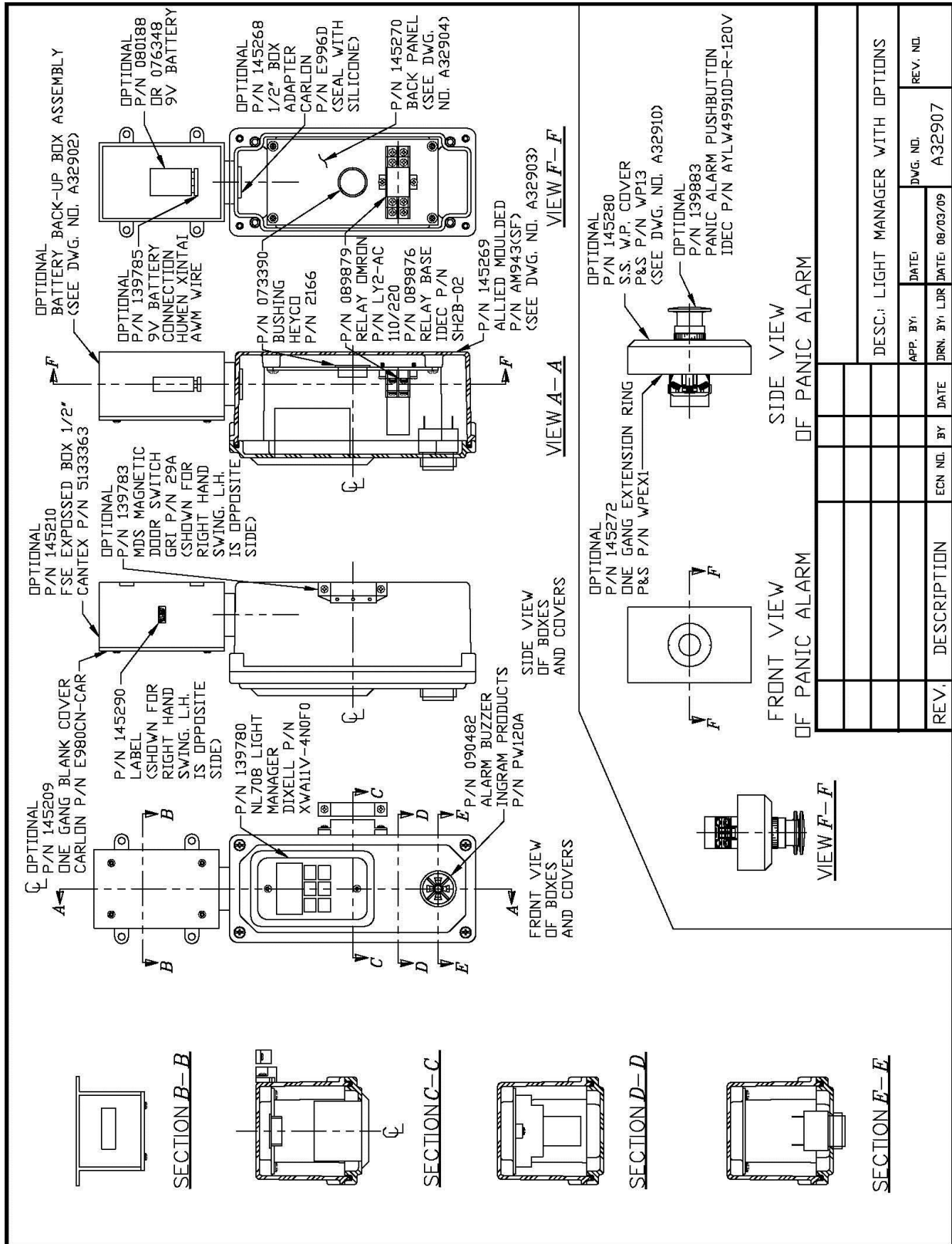
P1	Flashing	PROBE FAILURE
HA	Alternated with temp	HIGH TEMP ALARM
LA	Alternated with temp	LOW TEMP ALARM
dA	Alternated with temp	DOOR OPEN ALARM
PAn	Alternated with temp	PANIC ALARM (need opt. panic switch)

Operating Instructions Alarm/Light Module XWA11V

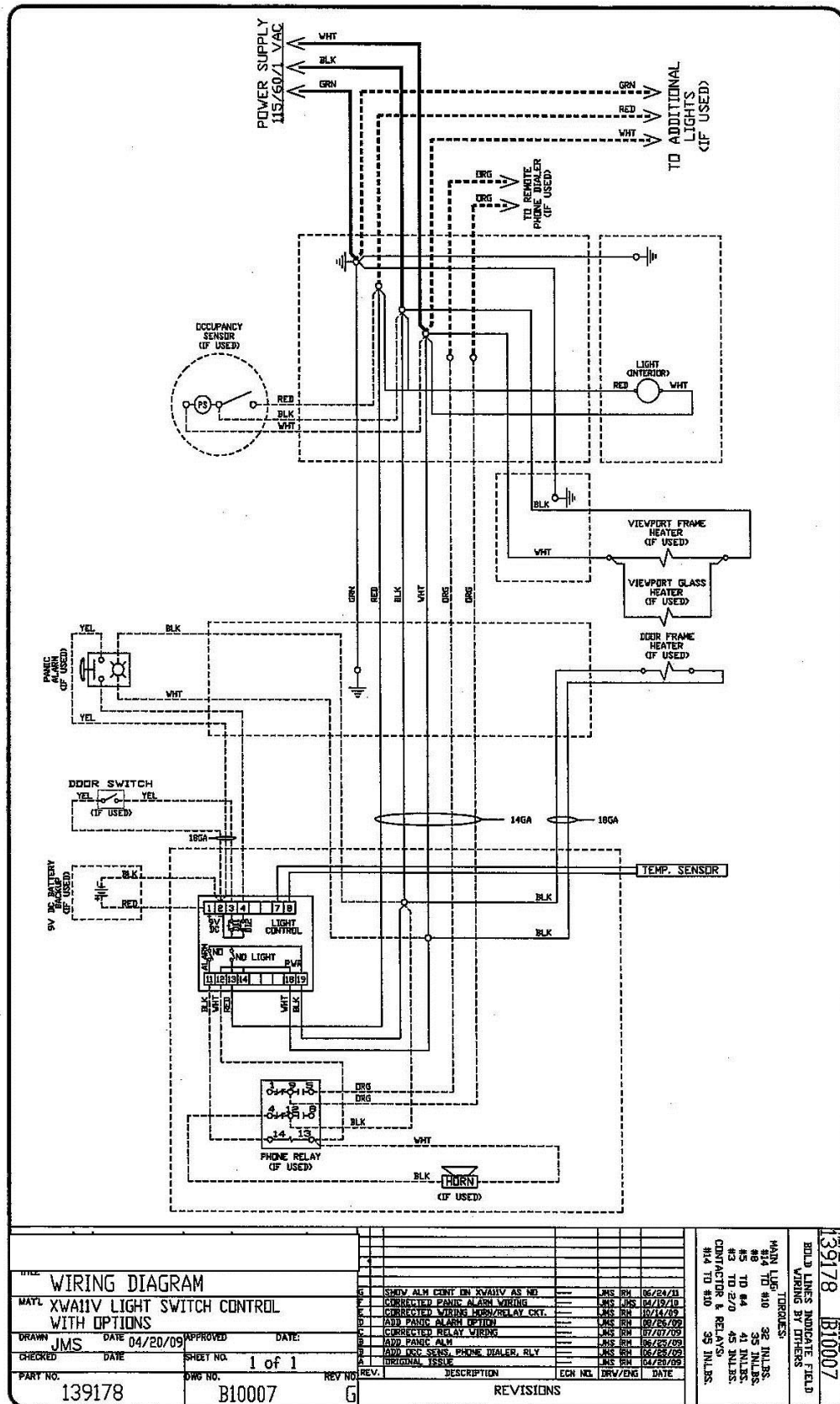
Walk-In Alarm System Parts List

NOR-LAKE	P/N	Description
	139780	XWA11V Walk-In Alarm Module
	145288	5 Foot Probe
	139807	30 Foot Probe
	139783	MDS Magnetic Door Switch – Door Open Alarm
	090482	EXT/BUZ Alarm Buzzer
	139809	'iDial2' Two Zone Phone Dialer
	089879	Relay for 'iDial2'
	139883	PAN Panic Alarm Switch
	139785	9V Battery Holder
	145267	Occupancy Sensor
	089876	Relay Base
	142469	Remote 2 x 4 Buzzer Box (includes buzzer)
	080188	Battery, 9V, Alkaline

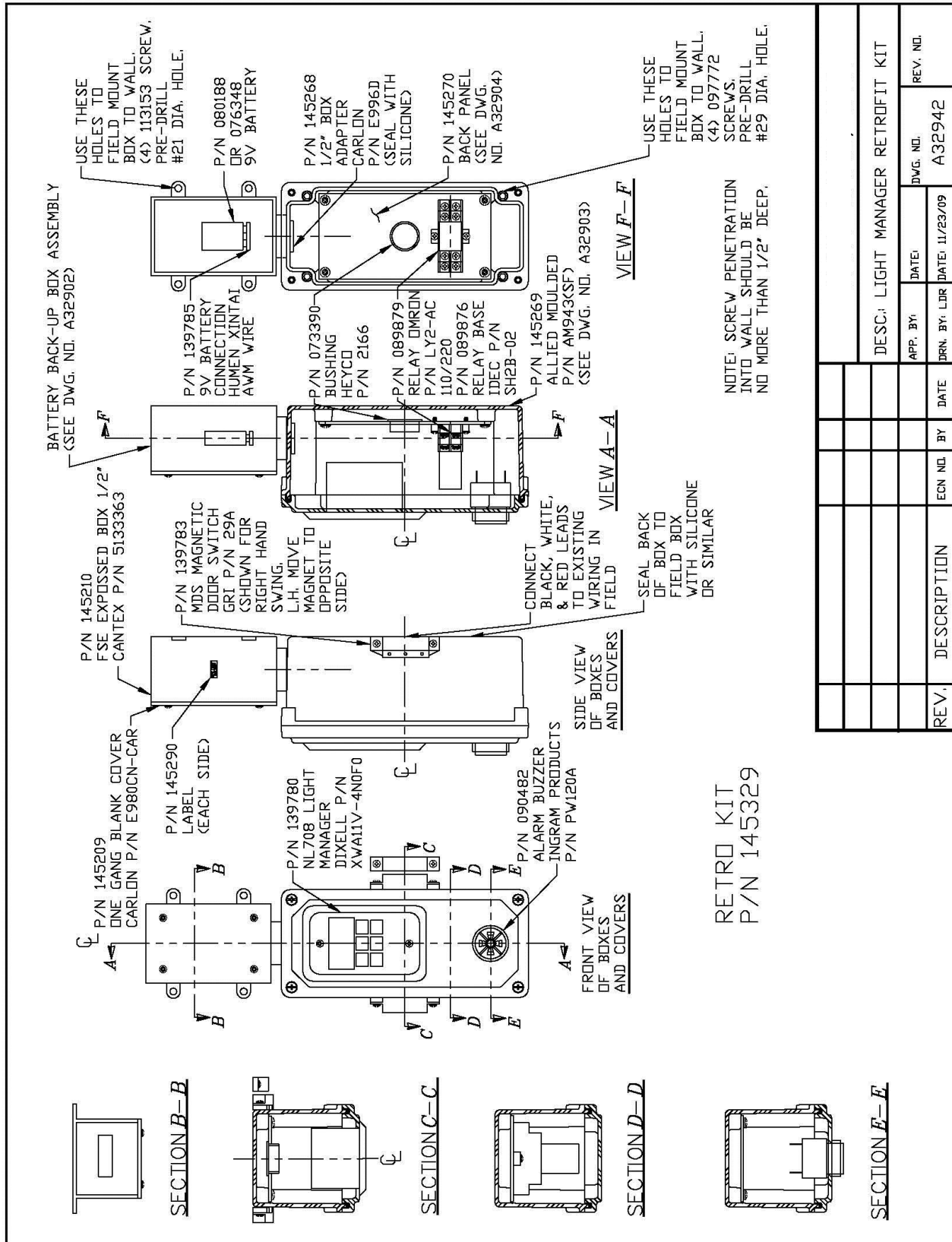
Operating Instructions Alarm/Light Module XWA11V



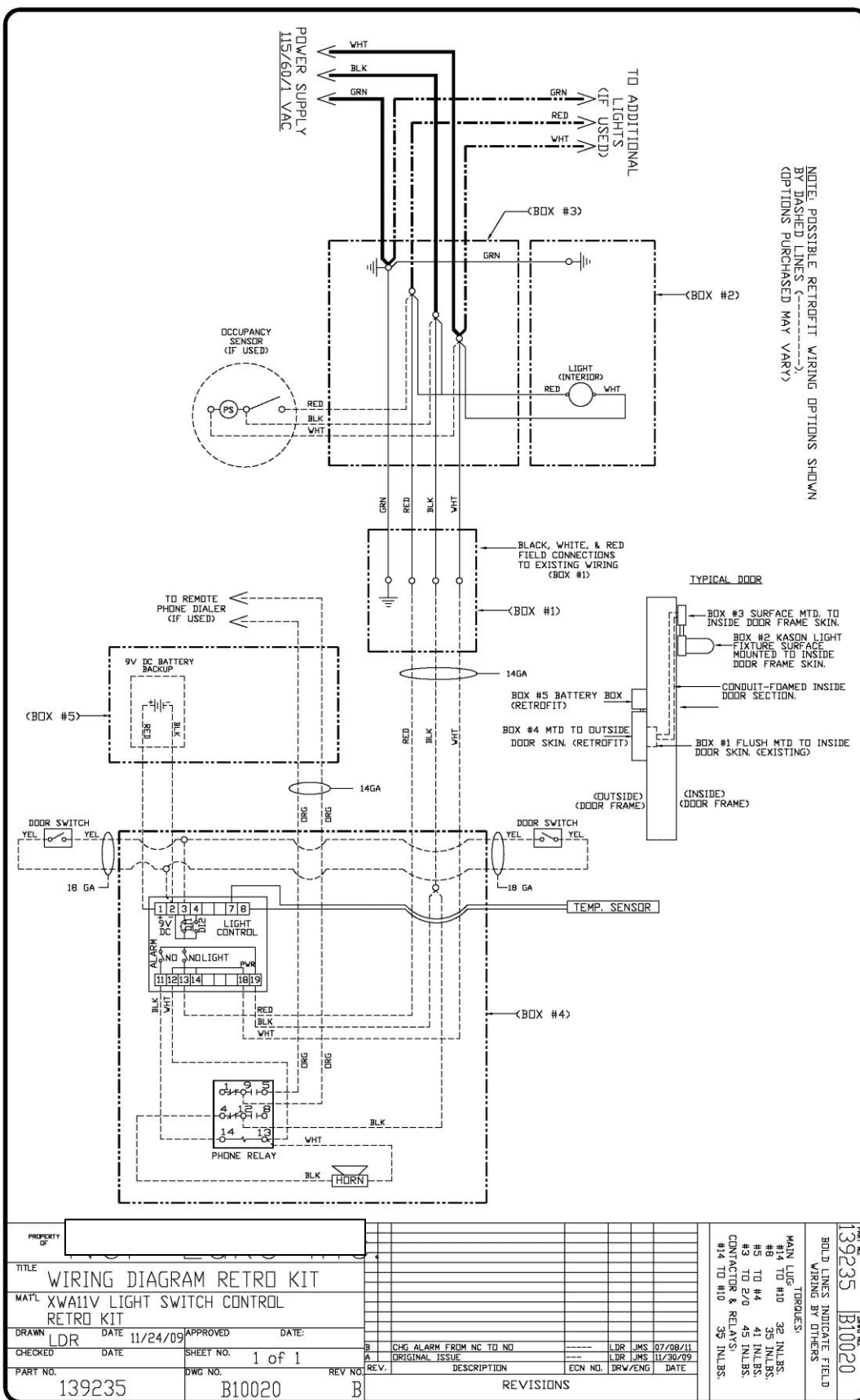
Operating Instructions Alarm/Light Module XWA11V



Operating Instructions Alarm/Light Module XWA11V



Operating Instructions Alarm/Light Module XWA11V



Operating Instructions Alarm/Light Module XWA11V

Installation:

1. The ideal location for the sensor is above door aimed to 8' in front of the doorway. To limit false tripping keep away from fans and vent ports. See "Sensor Set Up and Testing."
2. Thread the ½ NPT arm into a threaded 90° elbow, junction box or into light fixture housing. It is best to be able to adjust rotation and tilt of the sensor.
3. Connect the line voltage, neutral and load wires to the sensor leads as shown in wiring diagram (pg. 2).
4. Test the sensor for sensitivity and range (pg. 2). This unit is pre-set based on typical walk-in applications for a 1 minute delay and 80% sensitivity. If your application requires alternate settings, simply remove the front cover (2 screws & seals) and make the necessary changes. Remember to reinstall the two screw seals when finished.

Factory Settings



1 2 PIR Sensitivity

↓ ↓ 100% high
↓ ↑ 90%
↑ ↓ 80% (factory)
↑ ↑ 70%

3 4 5 Delay

↓ ↓ ↓ 10 seconds
↓ ↓ ↑ 20 seconds
↓ ↓ ↓ 30 seconds
↓ ↑ ↑ 1 minute (factory)
↑ ↓ ↓ 2 minutes
↑ ↓ ↑ 5 minutes
↑ ↑ ↓ 10 minutes
↑ ↑ ↑ 20 minutes

6 7 8 Sensor

↓ ↓ ↓ (factory)



Sensor Assembly

Specifications:

Voltage: 120 / 277 VAC @ 60 Hz
Load: 120 VAC / 0- 800W ballast
277 VAC / 0-1200W ballast

Time Delay: 10 seconds – 20 minutes

Size: 4"H x 4"W x 2.16"D
[102.58cm*102.58cm*55cm]

Weight: 0.5 lbs [227 grams]

Temperature:

Min: -20 °F [-28.9 °C]

Max: 160 °F [60 °C]

Electrical Connection:

½" conduit connection

18" 18 AWG wire

IP 65

Wire temperature 105 deg C max *

cULus Wet location -Indoor Use Only

NSF

Protective Device:

A fast blow fuse or circuit breaker
mounted within 25 feet from sensor (**Line**
side) is required.

***Some incandescent fixtures may require higher temperature wires. Remote mounting or adding fiberglass sleeves over the wires may be required.**

WARNINGS AND CAUTIONS:

- All installation must comply with local and National Electrical Codes.
- The manufacturer assumes no responsibility for improper installation or application.
- Turn off electricity at the breaker or fuse box before installation.

Special Note from the field:

Always disable any existing light switches. The motion sensor will not function as intended if the customer can turn the circuit off or has the ability to override the motion sensor.

Operating Instructions Alarm/Light Module XWA11V

Sensor Set Up and Testing

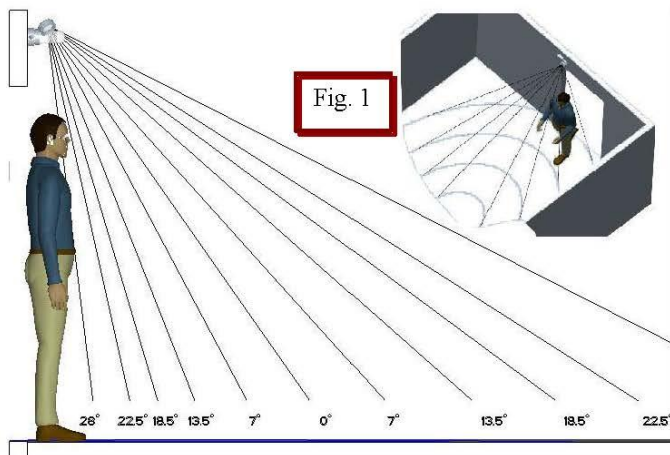


Fig. 1

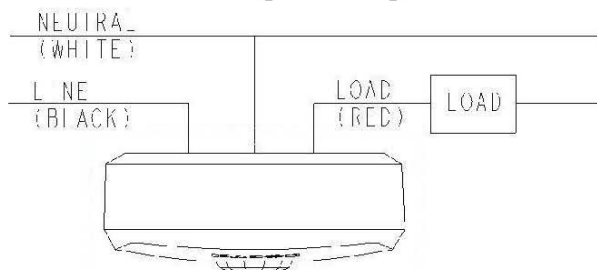
Location:

Sensor should be placed above the door. Sensor should be angled toward the center of the room without any obstructions. Sensor lens is designed to work in zones. If occupant crosses a zone the sensor will turn the lights on. Zones are represented by the rings on the floor in (Fig. 1).

Testing:

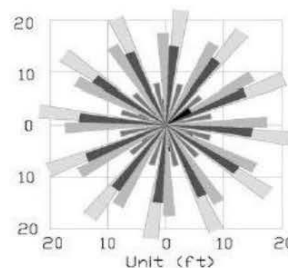
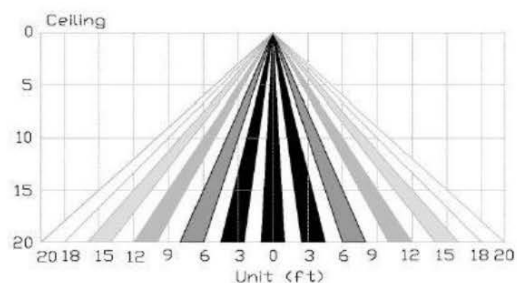
Allow a few minutes for the sensor to warm up then ENTER room. The sensor is equipped with a "Red LED" indicator that will activate when motion is sensed. Make note where the sensor sees motion and turns on the light. Repeat movement after allowing lights to turn off. Adjust sensor head for best room coverage. If the LED indicator is not visible then wait for the lights to go off. Additional sensor may be required for large / long rooms.

Wiring for Single



Replacement Parts List:

11901A00005	Low Bay sensor module (up to 20')
11901000009	Wall mounting kit with cord grip

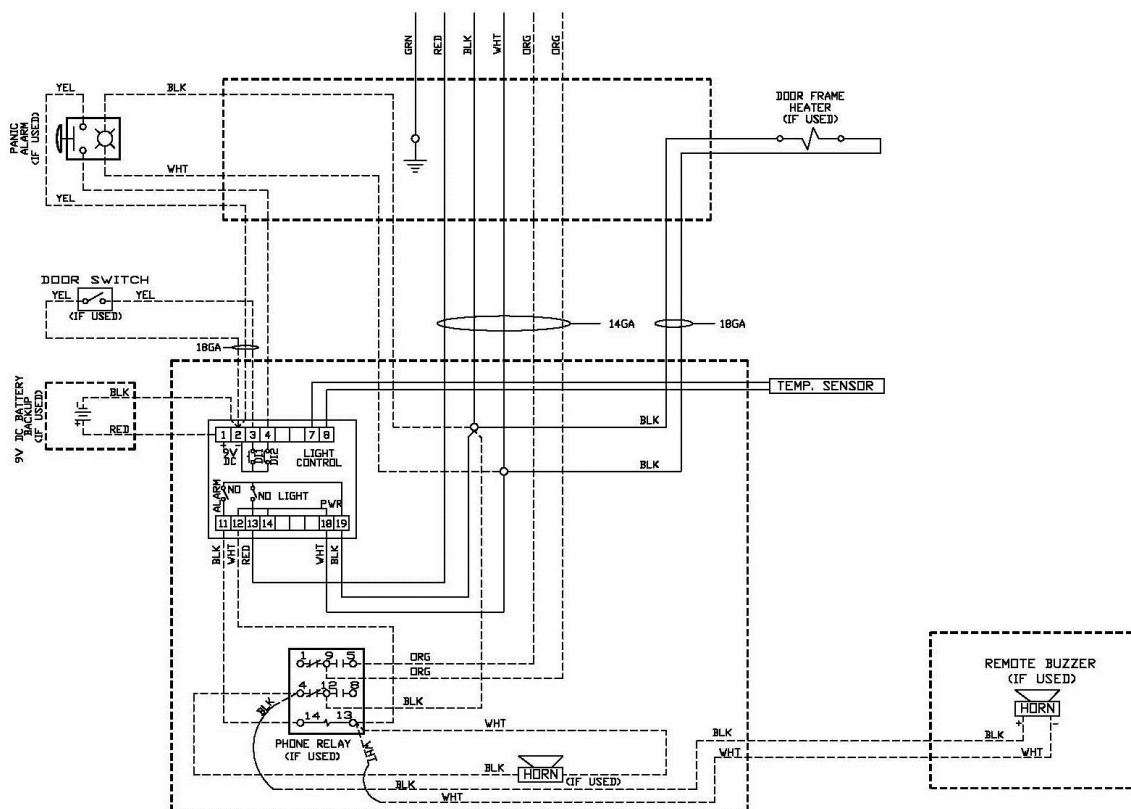
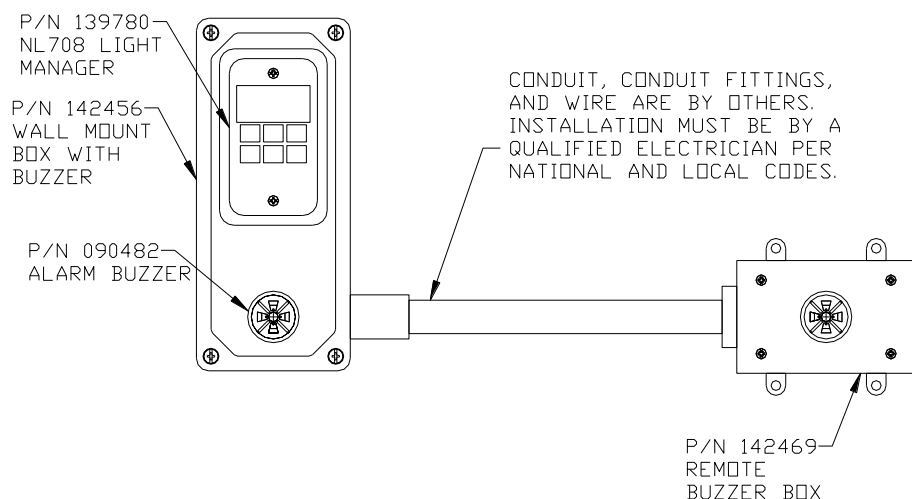


Operating Instructions Alarm/Light Module XWA11V

Remote Buzzer Box Installation

Installation:

1. Mount the remote buzzer box in the location desired.
2. Drill the appropriate size hole for the conduit fitting into the Wall Mount Box P/N 142456.
3. Conduit, conduit fittings, and wire are by others.
Installation must be by a qualified electrician per the applicable national and local codes.
4. Connect a black wire to terminal #4 and a white wire to terminal #13 of the Phone Relay in the Wall
5. Mount Box.



Operating Instructions Alarm/Light Module XWA11V

NOTES

NOTES