

# COLUMBIA PRODUCTS SANI-LAV<sup>®</sup>

## Model N8S20 Nozzle Series



Model N8S20



Model N8SR20



Model N8SW20



Model N8SB20



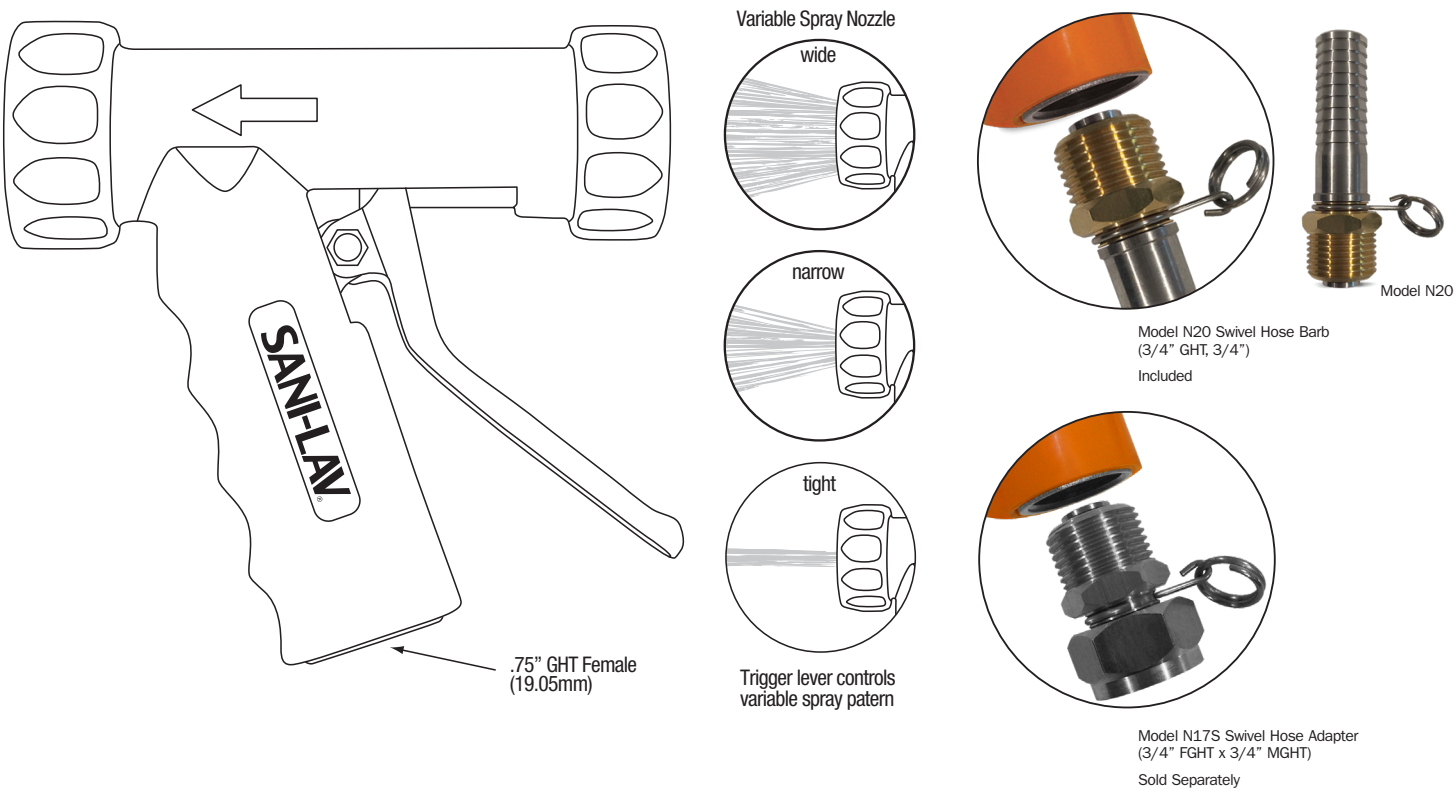
Large-sized nozzle with a stainless steel body

All Models include N20 Swivel  
3/4" GHT, 3/4" hose barb

N8S20 Universal Features


- 3/4" GHT inlet allows direct hose connection
- Maximum working pressure 150 psi
- Maximum operating temperature: 200°F/93°C
- Weight 2.6 lbs.
- Safety shut off trigger when released
- Replaceable insulated safety orange, red, white or black covers

Model	Color	Body	Handle Type	Inlet	Max psi	Max Temp	Weight	GPM @ 100 psi	Swivel Adapter
Stainless Steel									
N8S20	Safety Orange	Stainless	Stainless	3/4" FGHT	150	200	2.6	8.9	N20
N8SR20	Red	Stainless	Stainless	3/4" FGHT	150	200	2.6	8.9	N20
N8SB20	Black	Stainless	Stainless	3/4" FGHT	150	200	2.6	8.9	N20
N8SW20	White	Stainless	Stainless	3/4" FGHT	150	200	2.6	8.9	N20



Water Flow Rate Comparison

PSI	Standard Model N8	Water Saver Model N81	Water Savings % Model N81
100	8.90 gpm	5.25 gpm	41.01%



**Notice for California Consumers**  
**WARNING:** This product can expose you to chemicals including Lead, and Phthalates (DEHP) which are known to the State of California to cause cancer and birth defects or other reproductive harm. For more information go to [www.P65Warnings.ca.gov](http://www.P65Warnings.ca.gov).

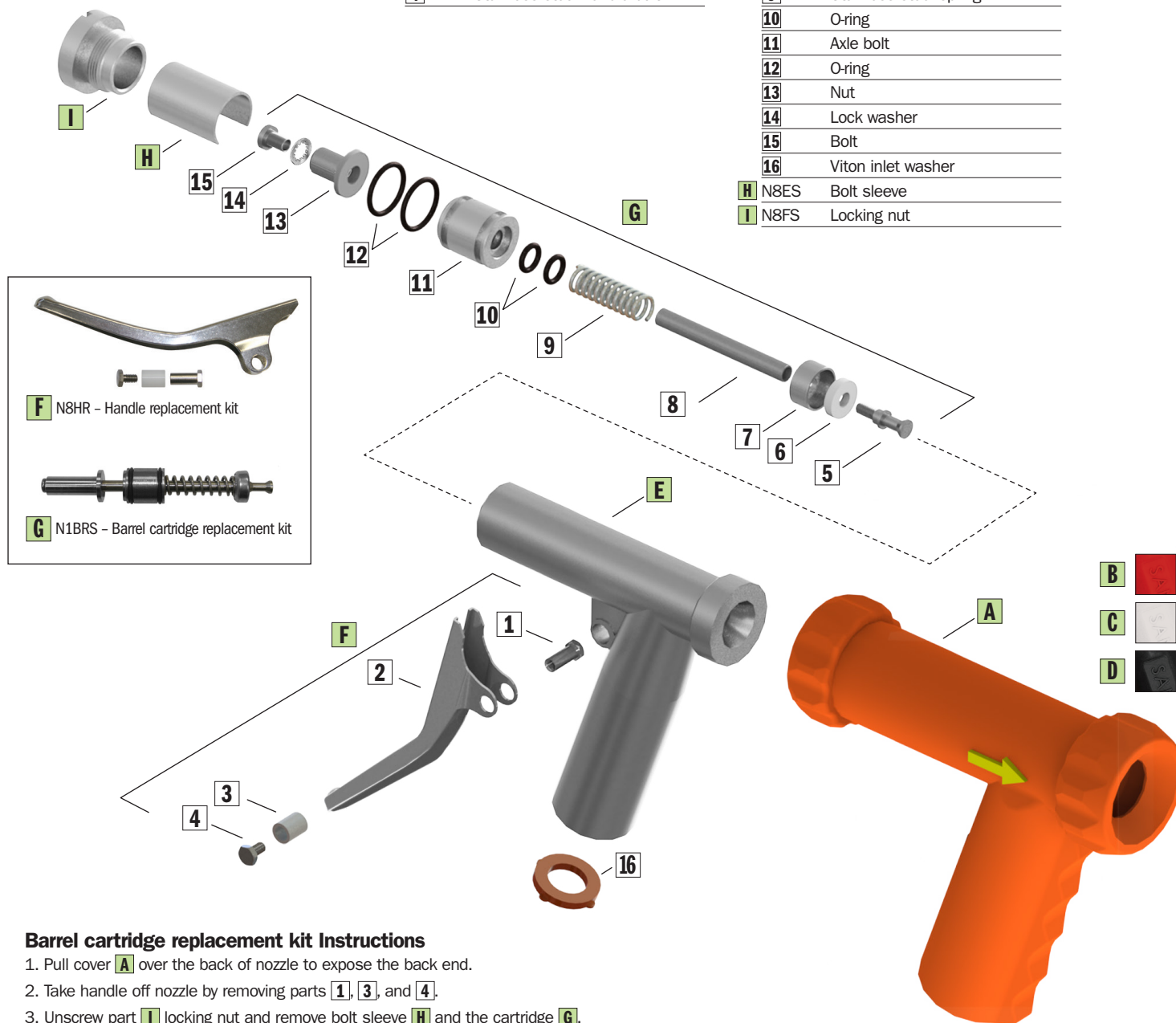
## N8S20 Replacement Parts

## Part No. Description

<b>A</b>	N8OC	Orange insulated cover
<b>B</b>	N8RC	Red insulated cover
<b>C</b>	N8WC	White insulated cover
<b>D</b>	N8BC	Black insulated cover

<b>E</b>	N8SSMB	Main body
<b>F</b>	N8HR	Handle replacement kit
<b>1</b>		Stainless steel nut
<b>2</b>		Stainless steel handle
<b>3</b>		Stainless steel handle arm sleeve
<b>4</b>		Stainless steel handle bolt

<b>G</b>	N8BRS	Barrel cartridge replacement kit
<b>5</b>		Flow adjustment tip
<b>6</b>		Washer
<b>7</b>		Washer sleeve
<b>8</b>		Axle
<b>9</b>		Stainless steel spring
<b>10</b>		O-ring
<b>11</b>		Axle bolt
<b>12</b>		O-ring
<b>13</b>		Nut
<b>14</b>		Lock washer
<b>15</b>		Bolt
<b>16</b>		Viton inlet washer
<b>H</b>	N8ES	Bolt sleeve
<b>I</b>	N8FS	Locking nut



## Barrel cartridge replacement kit Instructions

1. Pull cover **A** over the back of nozzle to expose the back end.
2. Take handle off nozzle by removing parts **1**, **3**, and **4**.
3. Unscrew part **I** locking nut and remove bolt sleeve **H** and the cartridge **G**.
4. Insert the new cartridge.
5. Re-Install the handle.
6. Replace the sleeve with the open end facing down.
5. Screw the locking nut back into place.
6. Slip the cover back over the nozzle end using a round ended tool similar to a shoe horn.