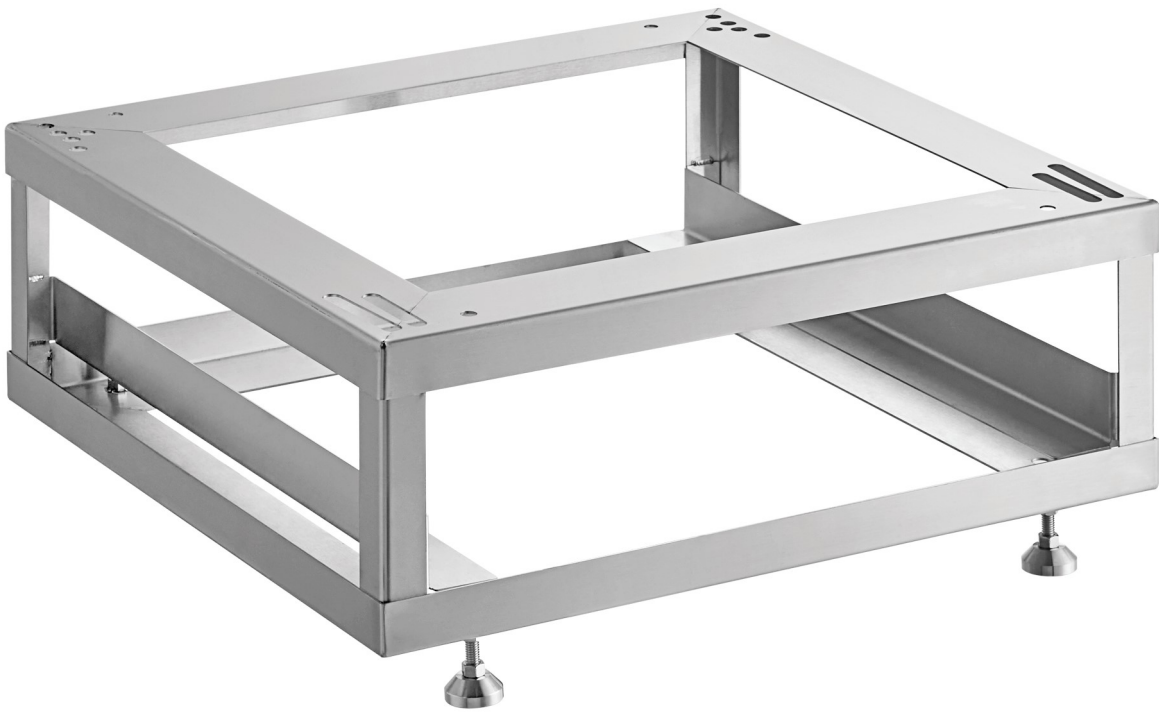




ASSEMBLY & INSTALLATION INSTRUCTIONS



UNDERCOUNTER DISH MACHINE STAND

MODELS: 541STAND24, 541STAND24KIT
COMPATIBLE UNIT: 541HTUC30



ASSEMBLY & INSTALLATION INSTRUCTIONS

PRIOR TO ASSEMBLY AND INSTALLATION

Inspect for damage. Verify that all correct parts are included immediately upon receiving:

- A** Frame (1)
- B** Stainless Steel Adjustable Feet (4 pcs)
- C** Stainless Steel Hex Screws (8 pcs)
- D** Stainless Steel Flat Washers (8 pcs)
- E** Spring Washers (4 pcs)

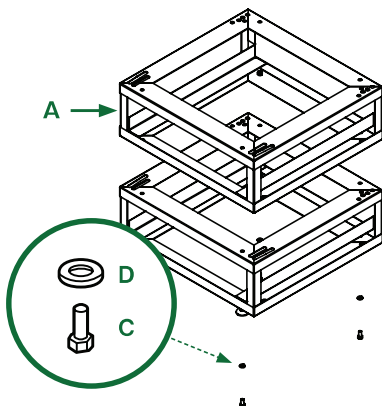
Make sure the dishwasher is unplugged and fully drained prior to installing.

NOTE: Always install with a partner and practice proper lifting technique to prevent injury. Installers will have to lay the dishwasher on its top to install. Make sure this is done slowly, safely, and with control. Avoid dropping or damaging the dishwasher. To prevent scratching, do not place directly on a hard surface.

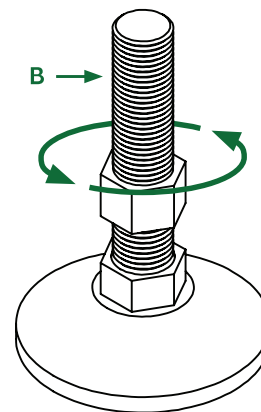
ASSEMBLY INSTRUCTIONS

1. Place the frame (A) on its top, with the bottom facing upwards.

For 541STAND24KIT, align the top of the second frame with the bottom of the first and fasten together using the (4) included hex screws (C) and flat washers (D).



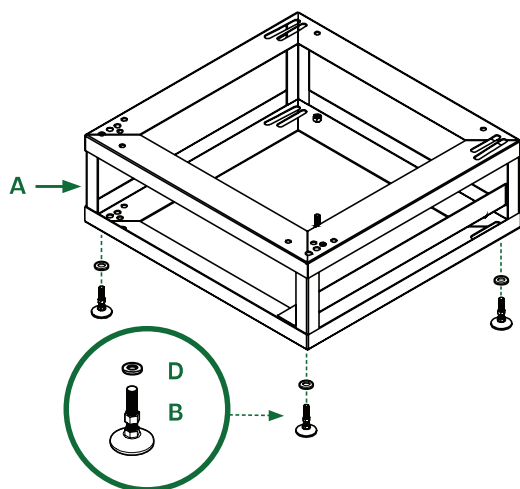
2. Adjust each foot (B) to the desired height. Ensure the height of the nut results in a level frame.



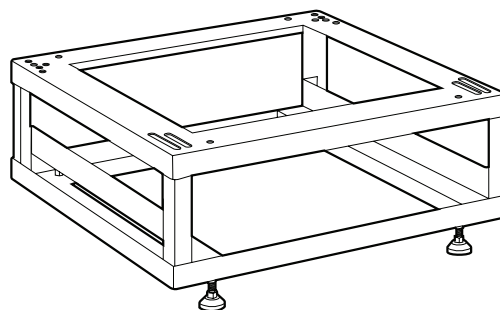


ASSEMBLY & INSTALLATION INSTRUCTIONS

3. Install the four adjustable feet (B) to the frame (A) with a flat washer (D).



4. Place the stand on its feet to ensure that it is stable and level.



INSTALLATION INSTRUCTIONS

1. Remove feet of the undercounter dishwasher.
2. Align holes of the frame with that of the dishwasher's feet holes.
3. Using the stainless steel hex screws (C), spring washers (E), and flat washers (D), fasten the stand securely to the bottom of the dishwasher.
4. With a partner, place the dish machine upright on a level surface.
5. Before reconnecting utilities, verify that the machine is level and that the connections are tightened.
6. Reconnect and run your machine, inspecting for excess vibration or sources of concern.