



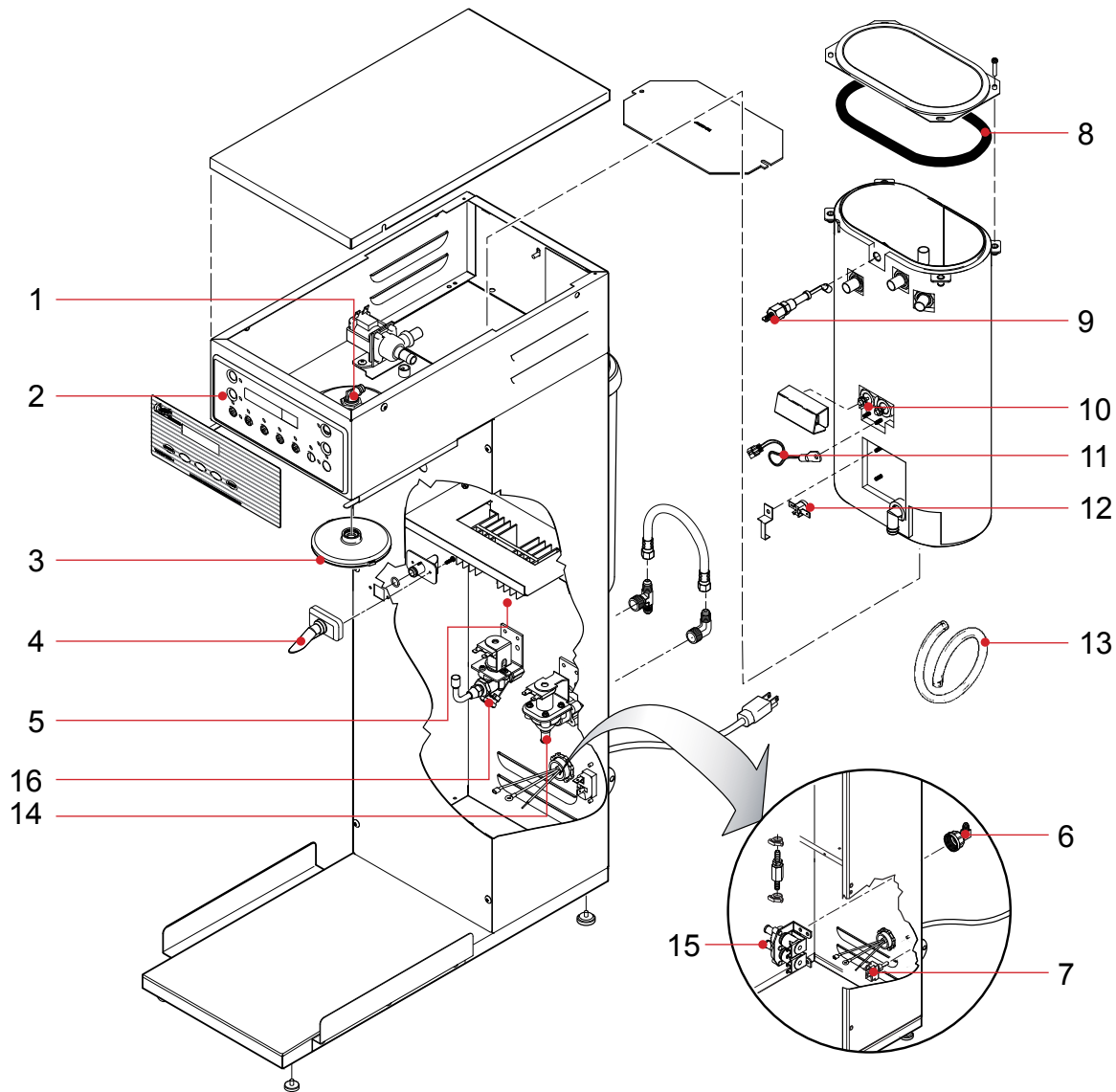
TEA BREWERS

TROUBLESHOOTING GUIDE



MODELS: TCTS10000, TCTS10200, TCTT10000, TCTS10600

PARTS IDENTIFICATION



PART #	DESCRIPTION
1. WC-2977-101K	KIT,SPRAYHEAD FITTING PLASTIC
2. WC-37189	UCM KIT, LABEL & OVERLAY 120V TCTS/T
3. WC-29025	SPRAYHEAD, PURPLE ADVANCE FLOW
4. WC-66079	SPOUT ASSY , DILUTION PLASTIC
5. WC-6193-0	HEAT SINK ASSEMBLY
6. WC-37255	KIT, DUAL VALVE WATER INLET
7. WC-102	SWITCH, TOGGLE NON-LIT 25A 120/240VAC
8. WC-43062	GASKET, TANK LID
9. WC-5502-01	KIT, PROBE, ASSY WATER LEVEL W/HEX FITTING, O-RING & NUT
10. WC-904-04	HEATING ELEMENT 1600W 120V W/JMNUT

PART #	DESCRIPTION
11. WC-1438-101	SENSOR, TEMPERATURE TANK
12. WC-523	THERMOSTAT, MNL RESET 120/240V 25A
13. WC-5310	TUBING, 5/16" ID X 1/8" W SILICONE
14. WC-826L	VALVE, INLET 1GPM 120V 10W
15. WC-895-105	VALVE, INLET DUAL 120V 10W 2 GPM X .5 GPM
16. WC-801	VALVE, INLET BRASS .50 GPM 120V 10W
17. WC-37317	KIT, STRAIGHT FITTING & BUSHNG
18. WC-37365	KIT, FITTING TANK INLET
19. WC-29044	SLEEVE, OVERFLOW ASSY
20. WC-889	VALVE, DUMP LEFT 120V 12W

PARTS IMAGES

1



WC-2977-101K
KIT, SPRAYHEAD FITTING PLASTIC

2



WC-37189
UCM KIT, LABEL & OVERLAY 120V TCTS/T

3



WC-29025
SPRAYHEAD, PURPLE ADVANCE FLOW

4



WC-66079
SPOUT ASSY, DILUTION PLASTIC

5



WC-6193-0
HEAT SINK ASSY DV

6



WC-37255
KIT, DUAL VALVE WATER INLET

7



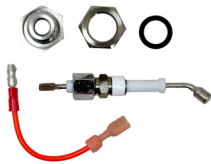
WC-102
SWITCH, TOGGLE SPST 25A 125/250VAC

8



WC-43062
GASKET, TANK LID

9



WC-5502-01
KIT, PROBE ASSY

10



WC-904-04
ELEMENT, HEATING 1.6KW 120V

11



WC-1438-101
SENSOR, TEMPERATURE TANK

12



WC-523
THERMOSTAT, MANUAL RESET

13



WC-5310
TUBING, SILICONE

14



WC-826L
VALVE, INLET 1 GPM 120V 10W

15



WC-895-105
VALVE, INLET DUAL 120V 10W

16



WC-801
VALVE, INLET BRASS

17



WC-37317
KIT, STRAIGHT FITTING & BUSHING

18



WC-37365
KIT, FITTING TANK INLET

19



WC-29044
SLEEVE, OVERFLOW ASSY

20



WC-889
VALVE, DUMP VALVE 120V 12W

TROUBLESHOOTING INSTRUCTIONS

POWER ISSUES

The unit will not turn on:

- 1** Verify that the Panel Breaker is turned on.
- 2** Verify that the Power Cord is properly connected to the receptacle.
- 3** Verify that the Toggle Switch is turned on
- 4** Verify 120v on both sides of the Toggle Switch. If yes, proceed to #5. If no, replace Toggle Switch.
- 5** Verify 120v on both sides of the Reset Thermostat. If yes, proceed to #6. If no, replace Reset T-Stat.
- 6** Verify 120v across pins #8 and #16 at the Molex connector. If yes, replace the UCM. If no, check and / or replace Wiring Harness.

HEATING ISSUES

Not heating:

Is the water level in the tank in contact with the water level probe? If not, See TANK FILLING ISSUES.

Yes: Verify 120 volts at the Heating Element. If 120 volts is present, replace the Heating Element.

No: Verify 120 volts to the Triac Gate: If yes, replace Triac. If no, replace UPM.

If the LCD does not read "Heating" verify correct Temperature programming, then replace the Temperature Sensor.

- i** **If the water in the tank is not in contact with the probe** – refer to tank filling issues. The unit will not heat until the water in the tank has contacted the probe.

Overheating:

Does the LCD read "Heating"?

Yes: Verify that resistance on temp Sensor reads less than 10k ohm. Verify correct mounting to tank. Replace sensor.

No: Check Triac for continuity between A1 & A2. If continuity is present, replace Triac. If there is no continuity, replace the UCM.

DILUTION ISSUES

Dilution Water is not flowing:

- 1** Verify 120v across the Dilution Valve Coil. If yes, replace Dilution Valve. If no, proceed to #2.
- 2** Replace the UCM.

Dilution Water flows continuously:

Does Dilution Water continue to flow after the Toggle Switch is turned off? If yes, replace Dilution Valve. If no, replace the UCM.

TANK FILLING ISSUES

Not filling:

- 1** Verify that the water supply is turned on.
- 2** Verify 120v across the inlet valve. If yes, replace Inlet Valve. If no, proceed to #3.
- 3** Remove Orange wire from the Probe. Does Tank start filling?

If yes, replace the Probe. If no, replace the UCM.

Overfilling:

- 1** Does the tank continue to fill after the Toggle switch is turned off?

If yes, replace the Inlet Valve. If no, proceed to #2.
- 2** Connect the Probe wire to chassis ground. Does the Tank continue to fill?

If yes, replace the UCM. If no, replace the Probe.

BREWING ISSUES

No water flows from the sprayhead:

- 1** Ensure correct alignment of the sprayhead fitting and that the tubing is routed properly to allow for maximum water flow. (No Kinks). Adjust and secure as needed.
- 2** Verify that the water level in the Tank is up to the Probe. If not, see * Tank Filling Issues*.
- 3** Verify 120v across the Dump valve Coil. If yes, replace Dump Valve. If no, proceed to #4.
- 4** Measure the resistance of the Dump Valve Coil. An "OPEN" or "0" (shorted) reading indicates a defective Dump Valve, and it should be replaced, ALONG with the UCM.

Short Pots:

- 1** Ensure that the sprayhead is clean and free of debris. Clean or replace as needed.
- 2** Reset the Brew & Dilution levels if necessary

Overflowing the Pots:

- 1** Is the Sprayhead missing? Replace as needed.
- 2** Ensure that the Tea container is empty before brewing.
- 3** Reset the Brew & Dilution levels if necessary.
- 4** Water flows from the Sprayhead continuously until the Toggle Switch is turned off.

Yes: Replace Dump Valve.

No: Check and replace Dump Valve and UCM.

NOTES

[illegible]



Wilbur Curtis Co., Inc.

6913 Acco Street, Montebello CA 90640
Customer Service: 800.421.6150 | 323.837.2300
csrassistance@wilburcurtis.com
Tech Support: 800.995.0417
www.wilburcurtis.com