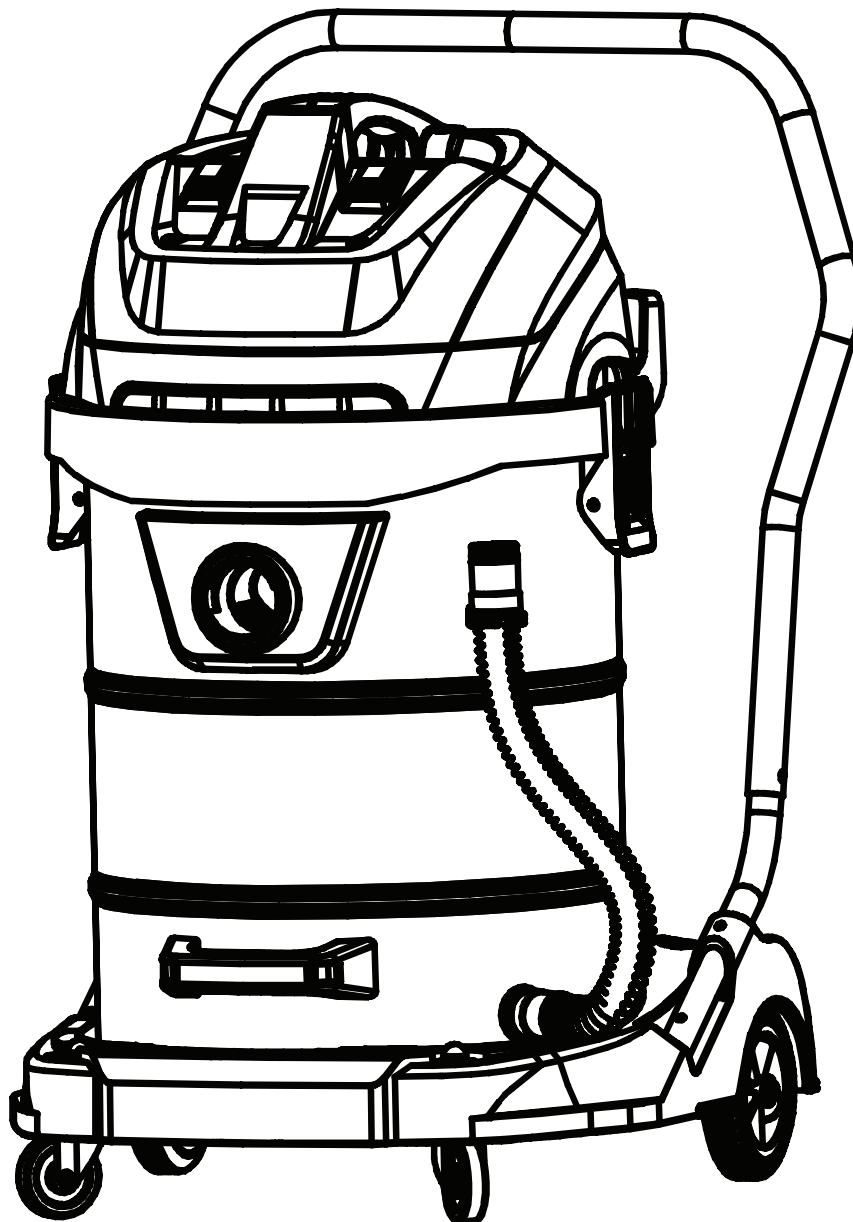


LAVEX
JANITORIAL



INSTRUCTION MANUAL



READ ENTIRE MANUAL BEFORE USE



WET/DRY VACUUM CLEANER

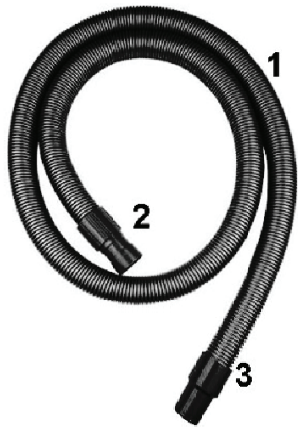
#944BJ14121G, #944BJ14126G

06/2020

PRODUCT FEATURES

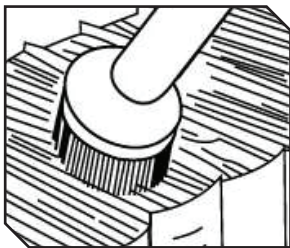
- 1) Easily cleans both wet and dry messes
- 2) Powerful motor can handle tough jobs
- 3) Slots on base allow for easy accessory storage
- 4) Ergonomic design allows for easy use and maneuverability
- 5) Stainless steel design provides unmatched durability

PART DESCRIPTIONS



1. Suction Hose
2. Short Connector
3. Long Connector
4. Metal Wand
5. Dry Floor Nozzle
6. Wet Floor Nozzle
7. Crevice Tool
8. Dust Brush

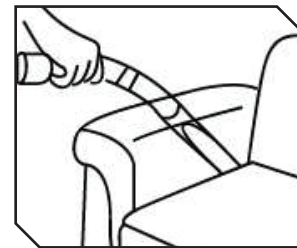
Use the right accessories for the right situation:



Dusting brush is best used for windows, tables and confined spaces

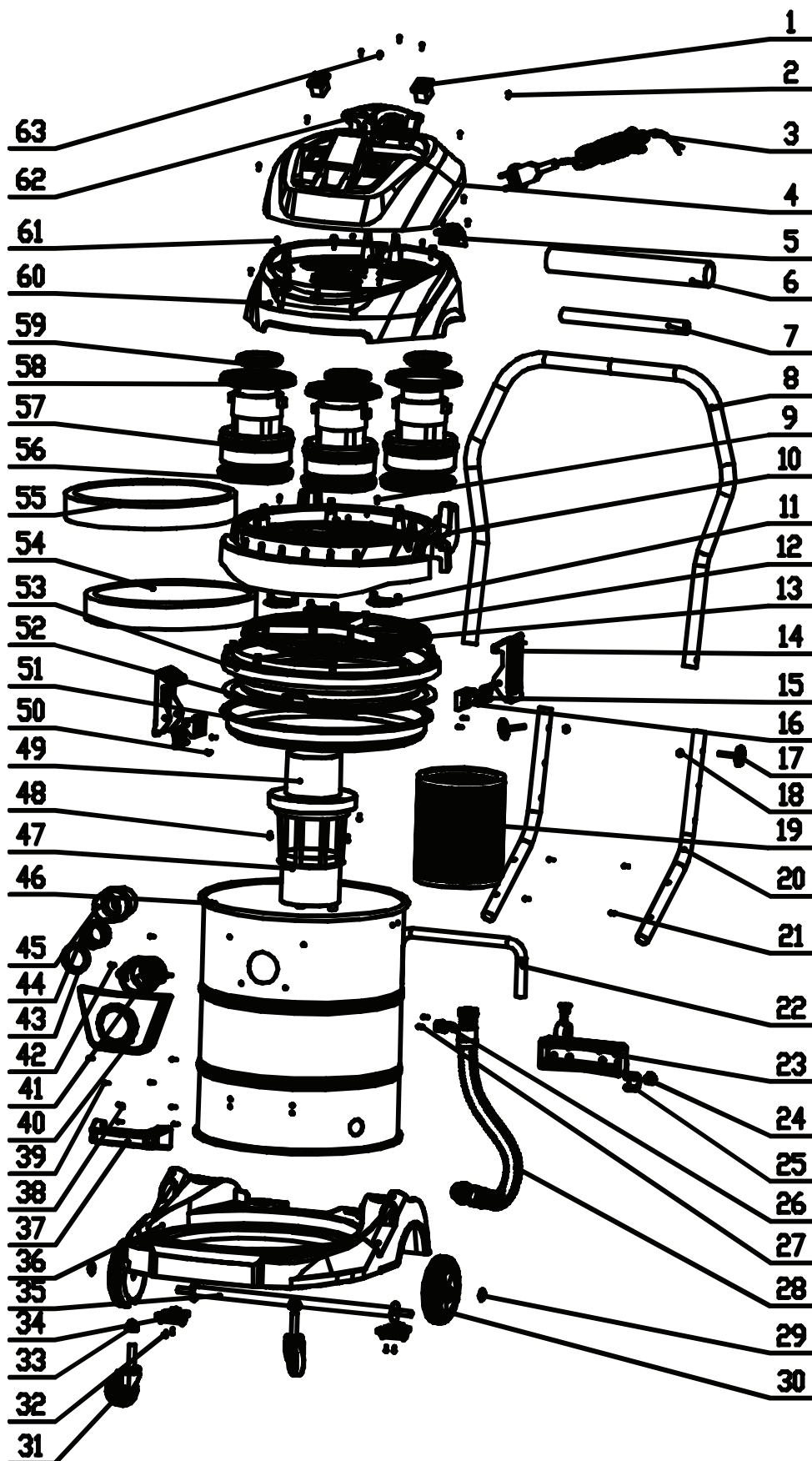


Floor nozzles are best used for hard surfaces and carpets



Crevice nozzle is best used for corners and hard-to-reach areas

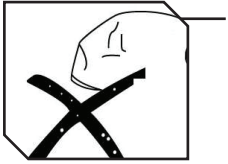
PART DESCRIPTIONS



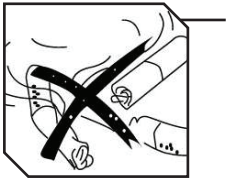
1. Switch
2. Screw
3. Cable
4. Top Cover
5. Wire Outlet
6. Handrail Sheath
7. Handrail Inner Pipe
8. Handrail Upper Pipe
9. Screw
10. Motor Covoer
11. Air Inlet Blocking Slice
12. Screw
13. Motor Pedestal
14. Barrel Clips
15. Barrel Clips Axillare
16. Barrel Clips Base
17. Handrail Fixing Screw
18. Nut
19. HEPA Filter Assembly (Optional)
20. Handrail Lower Pipe
21. Blind Rivets
22. Turnover Support Frame
23. Turnover Support
24. Turnover Button
25. Turnover Part
26. Drain Pipe Lip
27. Screw
28. Drain Pipe Assembly
29. Steel Wheel Cover
30. Rubber Wheel
31. Universal Wheel
32. Screw
33. Nut
34. Shaft Fixed Plate
35. Shaft
36. Pedestal
37. Handle
38. Screw
39. Screw
40. Suction Mouth Base
41. Suction Mouth
42. Screw
43. Hose Collar
44. Screwed Joint
45. Main Suction Pipe Body
46. Dust Collector
47. Bottom Basket
48. Screw
49. Protective Valve
50. Blind Rivets
51. Filter
52. Barrel Seal Ring
53. Barrel Cover
54. Motor Air Outlet Sprong (1)
55. Motor Air Outlet Sprong (2)
56. Motor Seal Ring
57. Motor
58. Motor Upper Washer
59. Motor Air Inlet Seal Ring
60. Middle Cover
61. Screw
62. Handle
63. Screw

SAFETY INSTRUCTIONS

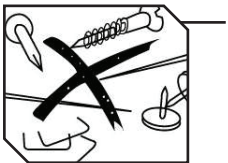
- 1) Before operating, ensure that local power supply matches specified voltage rating on the unit's label.
- 2) Use protective eyewear while operating this unit in order to reduce risk of eye injury. The use of any utility vacuum or blower could potentially blow foreign objects into the eyes, which can cause eye damage.



- 3) Ensure that the inlet mouth and hose remain unobstructed to reduce risk of motor malfunction or damage.



- 4) This unit is not designed to collect combustible or explosive objects in order to avoid fire and safety hazards - cigarettes, gasoline, flammable chemicals, etc.



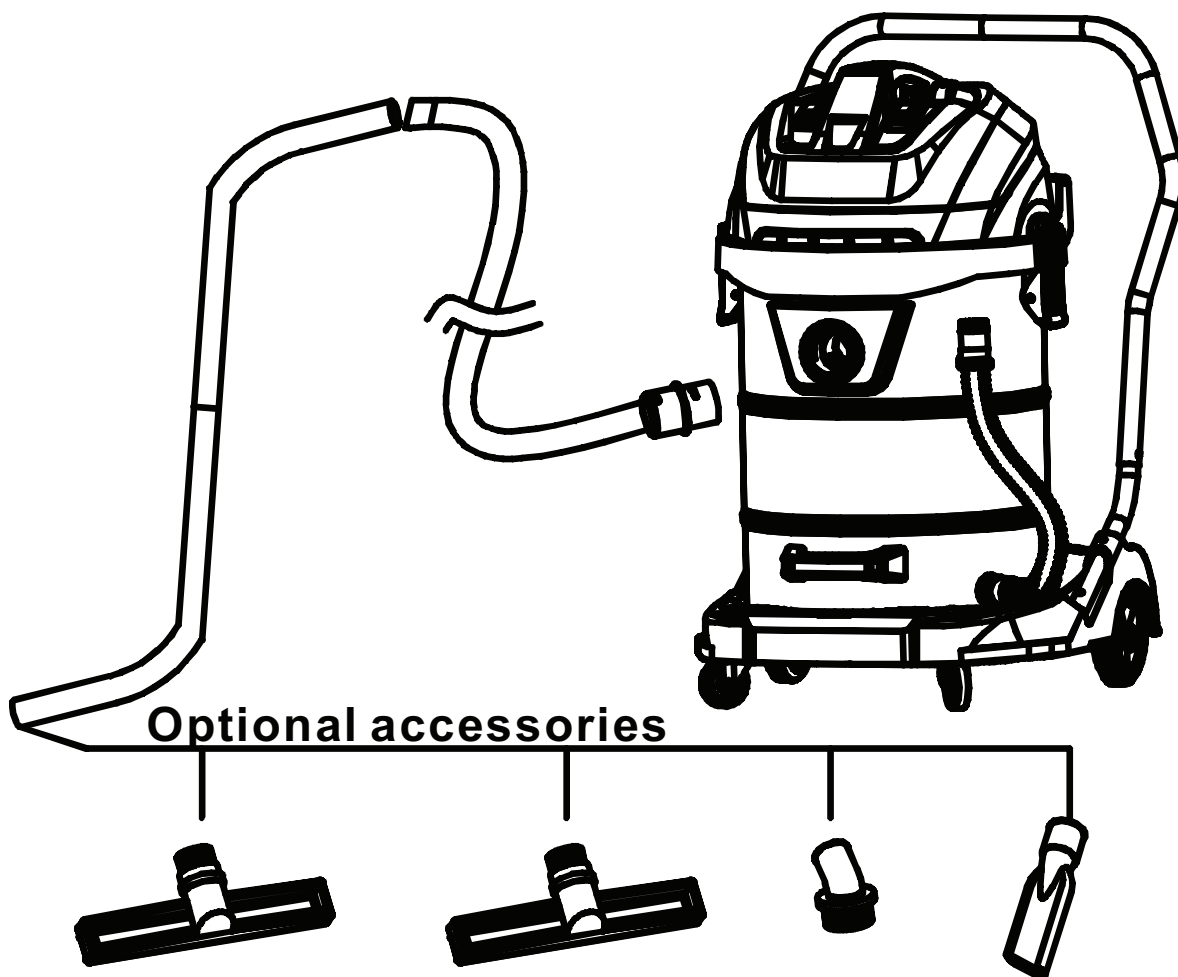
- 5) This unit is not designed to collect sharp objects - Do not vacuum nails, screws, etc.
- 6) Do not collect fine powders that could attach to the filter, such as calcium or graphite based powder. Buildup could cause motor damage.
- 7) Do not leave vacuum running while unattended in order to avoid missing signs of abnormal

operation such as loss of suction, liquid exiting exhaust mouth, or abnormal motor noises.

- 8) Always ensure that vacuum remains upright while in use to avoid personal injury or motor damage.
- 9) If water begins flowing from vacuum mouth, immediately turn power off. After power is off, drain the water from the unit. Do not overturn while in use to avoid motor damage.
- 10) Always ensure that this unit is powered off and unplugged while not in use.
- 11) Keep this unit away from high temperatures or prolonged sunlight to avoid plastic warping or melting.
- 12) Do not use the hose to move this unit to avoid hose damage.
- 13) Do not clean the vacuum head with water, and keep the head and motor away from water in order to avoid motor malfunction and possible electric shock. Vacuum head should only be cleaned using a towel or cloth.
- 14) Do not attempt to fix the power cord yourself if damaged or severed, contact your distributor in this case.

USAGE INSTRUCTIONS

- 1) Insert hose connector into vacuum mouth as shown below and ensure that the connection is tightly fastened. All accessories shown below can be used with the vacuum wand.
- 2) Ensure that the filter is securely in position before use.
- 3) Always empty vacuum tank and remove dust filter before vacuuming wet substances.
- 4) Insert plug into a corresponding power outlet before turning unit power on.
- 5) Turn the power switch to the on position in order to turn the vacuum on.



PROTECTIVE DEVICE INSTRUCTIONS

Special instructions concerning protective device

- 1) Protective device will raise and suction power will stop when tank is full. When this occurs, turn power off immediately and empty the unit before continuing.
- 2) Only use unit with a 100-120V current power socket.
- 3) If power cord is damaged or severed, contact your distributor. Do not attempt to repair yourself.
- 4) Keep hair, loose clothing, fingers, and all parts of body away from openings and moving parts.
- 5) Do not leave Vac when plugged in. Unplug from outlet when not in use and before servicing.

To prevent possible harm to the environment or human health from uncontrolled waste disposal, recycle it responsibly to promote the sustainable reuse of material resources.

MAINTENANCE

TANK CLEANING PROCESS

Always empty dust tank after every use to maintain vacuum performance and avoid motor damage or injury.

- 1) Unclip the vacuum head from the body.
- 2) Remove the filter and completely clean and dry the vacuum tank.
- 3) After the tank is clean and dry, put the filter back into place and secure the vacuum head on to the body.

FILTER BAG CLEANING

Cloth filter should be cleaned with warm water and air dried to remove dust buildups. Always ensure that the filter is completely dry before reusing.



TECHNICAL DATA

Item #	Wattage	Voltage
944BJ14121G	1400W	100-120V
944BJ14126G	1400W	100-120V

