

EPA Establishment#  
100231CHN001



**IDEAL WAREHOUSE**  
**INNOVATIONS INC.**

Protecting Your People

JADE2.0 (SCA5100C)

## **OPERATION MANUAL**

Read the manual thoroughly before  
operation and retain for future reference.



**LISTED**  
**E520581**

## TABLE OF CONTENTS

|                                   |       |
|-----------------------------------|-------|
| SAFETY PRECAUTIONS .....          | 3-5   |
| HOW IT WORKS .....                | 6     |
| FEATURES AND SPECIFICATIONS ..... | 7     |
| PART NAME .....                   | 8     |
| INSTALLATION .....                | 9     |
| OPERATION .....                   | 10-12 |
| CARE AND MAINTENANCE .....        | 13-14 |
| TROUBLESHOOTING .....             | 15    |

## SAFETY PRECAUTIONS 1

Be sure to follow all precautions below:

### Running Environment Cautions

- Use only a 120-volt outlet with grounding wire receptacle.
- Do not put it in rooms with high heat, damp or wet places.
- Best working condition is 10-40°C.
- Level the unit well, never use unit when it is tilted or laying down.
- To reduce the risk of electric shock, this equipment has a grounding type plug that has a third (grounding) pin. This plug will only fit into a grounding type power outlet. If the plug does not fit into the outlet, contact qualified personnel to install the proper outlet. Do not alter the plug in any way.

### Unit Operation

- Do not insert fingers or foreign objects into the intake or air outlet.
- Keep hair, loose clothing, fingers and all parts of body away from openings and moving parts.
- Do not block the air intake and air outlet. Never insert small things into the air intake/outlet.
- Do not use the air purifier if the power cord or plug is damaged or the connection to the wall outlet is loose.
- When removing the power plug, always hold the plug and never pull by the cord.
- Do not use the unit near or on hot objects, such as cooking range or where it may be exposed to steam.
- Stop the unit and unplug the power when moving or maintenance. Always hold the handles on the side of the unit when moving it.
- To avoid causing fire and/or shock do not attempt to disassemble the unit - only certified technicians should do this.
- Do not wash or reuse the HEPA-Rx filter and the Activated carbon filter.



## WARNING

The internal UV-C lamp contains a small amount of mercury which is contained inside the lamp unless broken. Mercury and mercury compounds are known to the State of California to cause cancer and birth defects or other reproductive harm.

**For more information go to [www.P65Warnings.ca.gov](http://www.P65Warnings.ca.gov)**

## SAFETY PRECAUTIONS 2

This product complies with the maximum allowable concentration of ozone of 0.050 parts per million by volume (ppmv) in a 24-hour period. The Health Canada Guideline 2010 recommends that the maximum exposure limit, based on an averaging time of 8 hours, is 0.020 ppmv or less when tested in a sealed, controlled room approximately 30 m<sup>3</sup>.

Ce produit est conforme avec la concentration maximale permise d'ozone de 0,050 parties par million par volume (ppmv) pendant une période de 24 heures. La Ligne directrice (2010) de Santé Canada recommande un niveau maximal d'exposition, basé sur un moyen de 8 heures, soit 0,020 ppmv ou moins dans une chambre de teste étanchée et contrôlée de 30 m<sup>3</sup>.

### INTENDED USE

The JADE2.0 Air Purifier is intended to capture particles and microorganisms from the air.

### UTILISATION PREVUE

Le purificateur d'air JADE2.0 est destiné à capturer les particules et les micro-organismes de l'air.

### DIRECTIONS FOR USE

Plug the power cord in and you will hear a "Beep". The small inner circle will turn blue this indicates the air purifier is in standby mode. Use your hand to wave over the sensor, this waving motion turns the unit on & off, and can also adjust the fan speed.

### MODE D'EMPLOI

Branchez le cordon d'alimentation et vous entendrez un (< bip ». Le petit cercle intérieur deviendra vert - ce indique que le purificateur d'air est en mode veille. Utilisez votre main pour agiter le capteur, ce mouvement d'ondulation allume et éteint nite et peut également ajuster la vitesse du ventilateur.

### DISPOSAL INSTRUCTIONS

Dispose of filters and UV-C+ bulbs according to local regulations based on location of use (e.g. medical waste if used in a medical setting such as dental clinics, laboratories, etc.).

### INSTRUCTIONS D'ELIMINATION

Éliminez les filtres conformément aux réglementations locales en fonction du lieu.



### **SAFETY PRECAUTIONS 3**



**WARNING** - The internal UV-C+ lamp contains a small amount of mercury which is contained inside the lamp unless broken. Mercury and mercury compounds are known to the State of California to cause birth defects or other reproductive harm. For more information, go to [www.p65warnings.ca.gov](http://www.p65warnings.ca.gov).

The following safety warnings as per regulatory requirements of PCPA (Pest Control Products Act) in Canada:  
Avertissements de sécurité selon les exigences réglementaires de la PCPA (Loi sur les produits antiparasitaires) au Canada.

#### **PRECAUTIONS**

- READ THE LABEL AND ANY OPERATING MANUAL BEFORE USE
- KEEP OUT OF THE REACH OF CHILDREN
- WARNING - UV radiation is only emitted internally in this device.
- Unintended use of the device, or damage to the housing, may result in exposure to ultraviolet radiation.
- Ultraviolet radiation may cause eye and skin irritation.
- Avoid exposing eyes and skin to ultraviolet radiation.
- The use of this device is a supplement to and not a substitute for standard infection control practices; users must continue to follow all current infection control practices, including those practices related to cleaning and disinfection of environmental surfaces.

#### **FIRST AID INSTRUCTIONS**

Clean the injury using soap and warm water, apply antibiotic ointment and a bandage, and watch for signs of infection.

#### **INSTRUCTIONS DE PREMIERS SOINS**

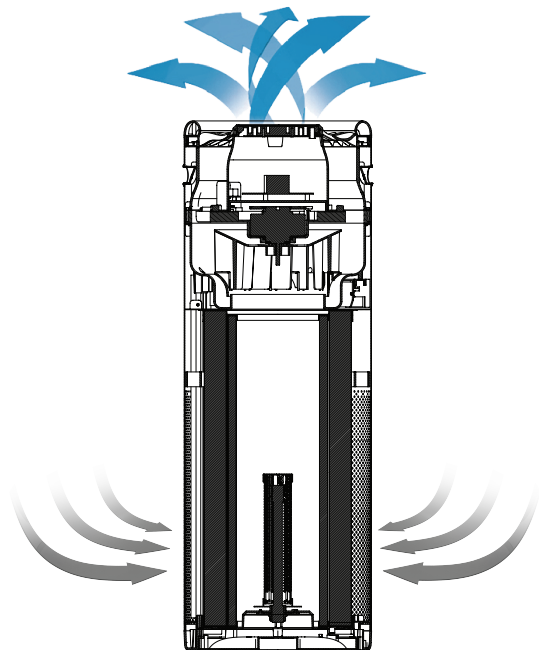
Nettoyez la blessure avec du savon et de l'eau tiède, appliquez une pommade antibiotique et un pansement et surveillez les signes d'infection.

## HOW IT WORKS

When the DC fan motor is running, the indoor air will be drawn through the bottom of the unit. The air will then pass through the HEPA-Rx Filter, the Activated Carbon Filter, the UV-C+ and Photocatalytic Nano-TiO<sub>2</sub> filter. The purified air is then released through the outlet on the top of the unit. The Revitalizing Negative Ion Generators near the air outlet releases revitalizing negative ions into the air.

The air is purified in six stages:

1. **NYLON NET PRE-FILTER**
2. **ULTRAFINE HEPA-Rx PARTICULATE FILTER**
3. **ACTIVATED CARBON FILTER**
4. **UV-C+ lamp**
5. **PHOTOCATALYTIC NANO-TiO<sub>2</sub> FILTER**
6. **REVITALIZING NEGATIVE ION CHAMBER**



## FEATURES AND SPECIFICATIONS

The unit has a HEPA-Rx Filter (remove particles), Activated Carbon Filter (adsorb gases), UV-C+ lamp and Super Oxidizing Photocatalytic Nano-TiO<sub>2</sub> system (capturing VOC's and airborne pathogens) and two Revitalizing Negative Ion generators.

### **Touch-free hand gesture operation**

The JADE2.0 can be operated completely with the wave of your hand, making it suitable in medical settings to avoid cross contamination.

### **Filters and UV-C+ Lamp Replacement Indicator Lights**

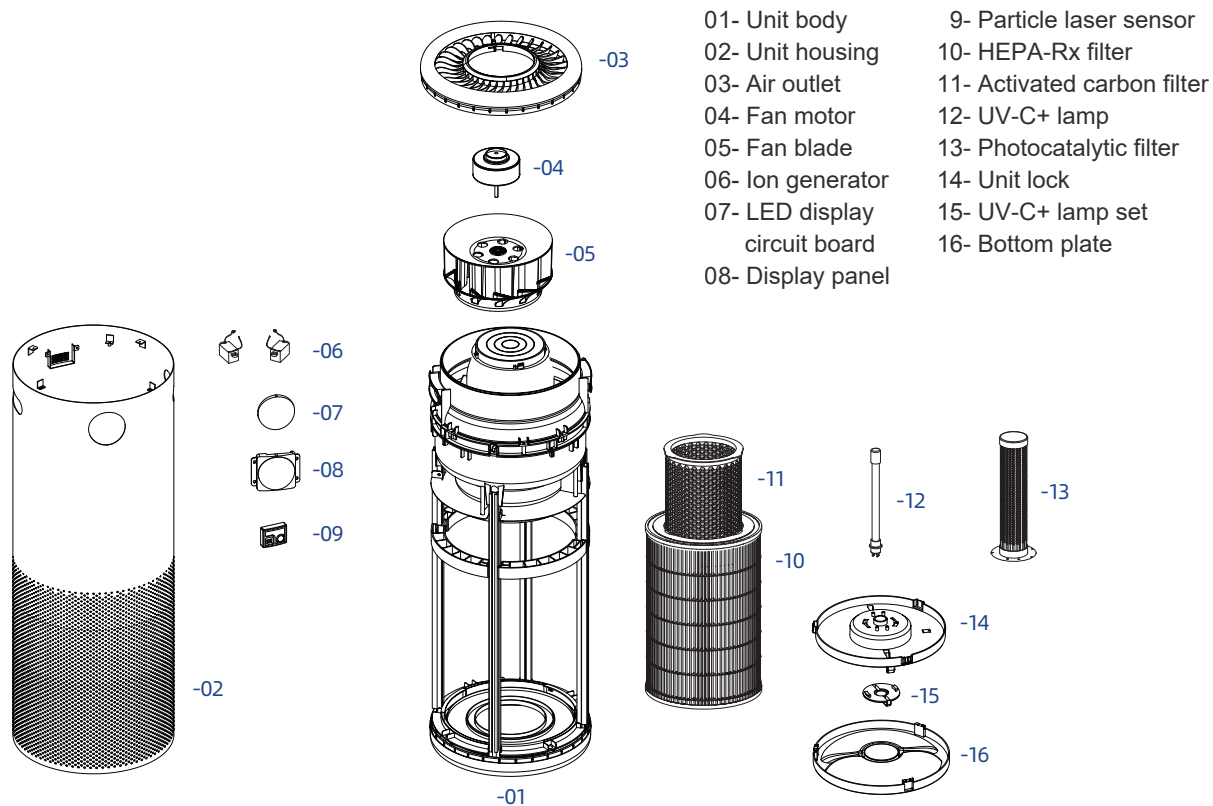
The indicator lights tell you when to replace the HEPA-Rx filter, the Activated carbon filter or the UV-C+ lamp.

### **Safety and Easy Maintenance**

The unit is also equipped with a safety interlock switch that will turn the power off if the bottom plate is opened. When the filters need to be replaced, simply open the bottom plate and pull out the filters and put the new ones in. No screws, hooks or tools are required.

|                   |  |
|-------------------|--|
| Model No.         | JADE2.0 (SCA5100C)                               |
| Power Requirement | 120V, 60Hz                                       |
| Rated Power       | 78W, 1.1A  |
| Negative Ion      | 3x10 <sup>6</sup> /cm <sup>3</sup>               |
| UV-C+ Lamp        | 10W  |
| Dimensions        | Φ31.6cm x H89.5cm (Φ12.4 inches x H35.2 inches ) |
| Weight            | 14.5kg (31.9 pounds)                             |

## PART NAME



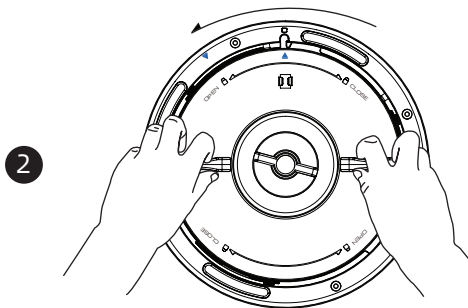
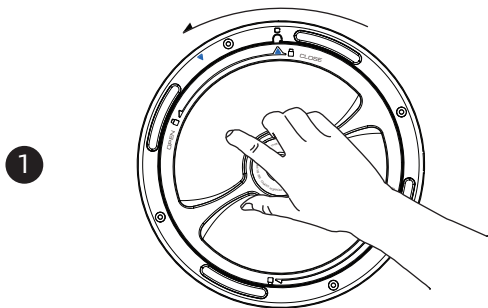
## INSTALLATION

1. Power supply condition: Use only a 120-volt outlet with grounding wire receptacle.
2. Operational conditions: Temperature: 0°C~ 40°C; Relative humidity: <75%.
3. The unit should be installed in an indoor area.

### Before operation

Prior to using unit for the first time, you must remove the plastic bag from the HEPA-Rx filter inside the unit.

1. Turn unit upside down - put towel or any soft pad on the ground to avoid damage to the unit when you turn it upside down.
2. Open unit from the bottom - turn counterclockwise to open bottom as pictured below (Pic.1).
3. After the bottom plate is removed, pull out the power cord of the UV-C+ lamp, open the unit lock (Pic. 2) and take out the HEPA-Rx filter and the Activated carbon filter to remove the plastic cover.
5. Put the HEPA-Rx filter and Activated carbon filter back into unit. Align the blue arrow with blue arrow, turn the unit lock clockwise until the blue arrow is aligned with the letter C on the bottom plate (Pic. 2).
6. Re-connect the UV-C+ power cord, install the unit bottom by rotating clockwise the same with the Step 5 ( Pic.1)



## OPERATION 1

Plug the power cord in and you will hear a “Beep”. The small, inner circle will turn blue - this indicates the air purifier is in **standby mode**. Use your hand to wave over the sensor, this waving motion turns the unit on & off, and can also adjust the fan speed.

**(Wave 1)** Wave your hand the 1st time and the blue circle will turn white-low speed.

**(Wave 2)** Wave a 2nd time, the second circle will light up - medium speed.

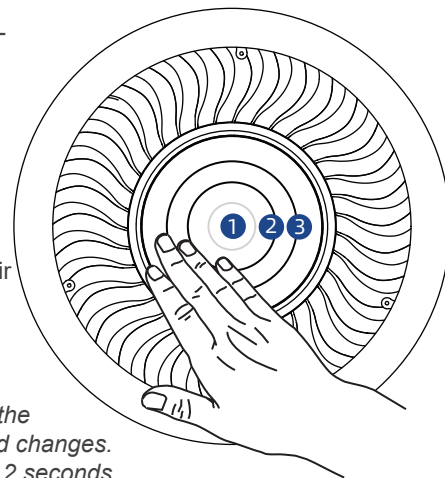
**(Wave 3)** Wave a 3rd time, the third circle will light up - high speed.

**(Wave 4)** Wave a 4th time, all the circles light up white - turbo speed.

**(Wave 5)** Wave a 5th time, the “AUTO” indicator will light up.

This is **Auto Mode** -the unit will operate on low speed and will adjust speeds accordingly based on what pollution the sensors pick up in the air (See below pic.).

**(Wave 6)** Wave 6th time, the unit goes back to **Standby Mode** and the inner circle turns back to blue.

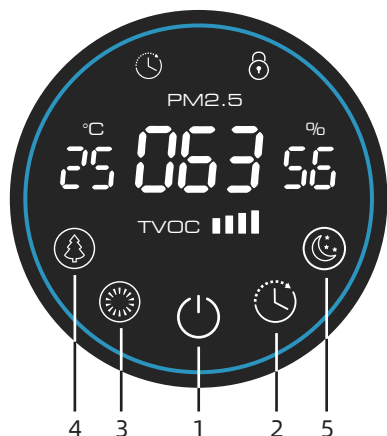


*Hover & hold your hand over the sensor for 2 seconds and this will lock the unit at the desired speed. This will prevent accidental or unwanted speed changes. To unlock this feature, hover & hold your hand over the sensor again for 2 seconds.*

| Indicator Color | PM2.5                              | TVOC Level | Speed |
|-----------------|------------------------------------|------------|-------|
| Blue            | $\leq 35\mu\text{g}/\text{m}^3$    | ■ ~ ■■     | L     |
| Orange          | $36\sim 150\mu\text{g}/\text{m}^3$ | ■■■ ~ ■■■■ | M     |
| Red             | $> 150\mu\text{g}/\text{m}^3$      |            | H     |

## OPERATION 2

### Button Operation



### NOTE

When the unit is not operated for one minute, the PM2.5 display panel will automatically enter the screensaver state. At this time, the power indicator and digital display will be on, and all other indicator lights will be off.

### 1 POWER Button

When the unit is plugged into an electrical outlet, the display panel shows the indoor PM2.5 concentration ( $\mu\text{g}/\text{m}^3$ ), temperature and humidity.

Press the button, turns the unit On and Off.

Hold the button for 3 seconds to reset the filters indicator light.

### 2 TIMER Button

Press this button to select the time for operation. The timer setting switches as shown: 2H -- 4H -- 8H -- 10H -- 12H -- cancel timing.

### 3 UV-C+ LAMP Button

When the button is pressed, it will turn off the UV-C+ lamps, pressing again will turn on the UV-C+ light.

### 4 NEG.ION Button

Turns Negative Ions on and off.

### 5 NIGHT Button

When pressed, all the indicator lights on the display panel will disappear.

### Pollutant level display

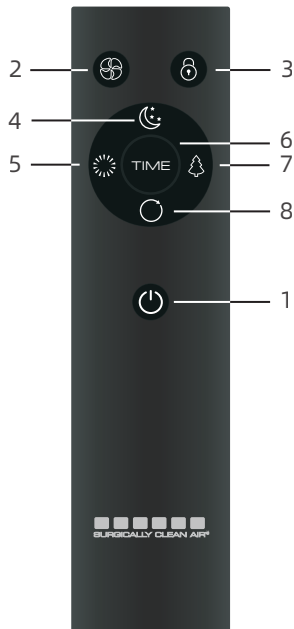
The different colors indicate the air quality level:

Blue=Good, Orange=Moderate, Red=Poor



## OPERATION 3

### Remote Control Operation



#### **1 Power (ON/OFF) Button**

The unit will start operating when the POWER button is pressed. Pressing the button again will stop operation.

#### **2 SPEED Button**

The fan speed can be switched among L- M- H- Turbo- AUTO settings.

#### **3 LOCK Button**

When pressed, the operation will lock at the desired speed except the NIGHT button.

#### **4 NIGHT Button**

When pressed, all the indicator lights on the display panel will go out.

#### **5 UV-C+ LAMP Button**

Turns UV-C+ lights on and off.

#### **6 TIMER Button**

The set time switches every time the button is pressed as shown below:  
2H - 4H - 8H - 10H - 12H - Cancel.

#### **7 NEG.ION Button**

Turns Negative Ions on and off.

#### **8 RESET Button**

Pressing the reset button 3 times will reset the replacement indicator lights.



## CARE AND MAINTENANCE 1

To maintain optimum performance of this air purifier, the HEPA-Rx Filter, the Activated carbon filter and the UV-C+ lamp need to be replaced when the indicator lights are flashing. If the device is operating in an atmosphere with heavy dust, particulate or pet dander, you may need to periodically vacuum the pre filters for optimal performance.

1. **Make sure all the filters are installed properly before operating the unit.**
2. **When conducting maintenance on the unit, be sure to unplug the power cord.**
3. **Never handle the plug with wet hands. If so, electrical shock and bodily injury may occur as a result.**

### Filters Life

1. HEPA-Rx Filter needs to be replaced once a year (running 24/7).
2. Activated Carbon Filter needs to be replaced once every 6 months (running 24/7).
3. UV-C+ lamp needs to be replaced once a year (running 24/7).

### Main Unit

Wipe with a dry, soft cloth for stubborn stains or dirt. Do not use **volatile fluids, benzene, paint thinner or polishing powder** as this may damage the surface.

Do not use detergents as detergent ingredients may also damage the unit. Keep the unit away from water.

### Replacing the HEPA-Rx filter

When the third circle on the sensor plate flashes, the HEPA-Rx filter needs to be replaced.

1. Stop the operation and unplug the unit.
2. Open the bottom plate, disconnect the power cord from the UV-C+ lamp, take off the unit lock.
3. Take out the used HEPA-Rx filter and replace with a new one.
4. After replacing the HEPA-Rx filter, hold the POWER button for 3 seconds to reset the time for the HEPA-Rx filter.

## CARE AND MAINTENANCE 2

### Replacing the Activated Carbon Filter

When the second circle on the sensor plate flashes, the Activated carbon filter needs to be replaced.

1. Stop the operation and unplug the unit.
2. Open the bottom plate, disconnect the power cord from UV-C+ lamp, take off the unit lock.
3. Take out the used Activated carbon filter and replace with a new one.
4. After replacing the Activated carbon filter, press the POWER button for 3 seconds to reset the life time.

### Replacing the UV-C+ lamp

When the inner circle on the sensor plate flashes, the UV-C+ lamp needs to be replaced

1. Stop the operation and unplug the unit.
2. Open the bottom plate, disconnect the power cord from UV-C+ lamp, remove screw and then twist to open the UV-C+ lamp set to take out the used UV-C+ lamp.
3. Replace with a new one and put new UV-C+ lamp back in the unit, close the UV-C+ lamp set, re-connect the power cord and put the bottom plate back on.
4. Press the POWER button for 3 seconds to reset the indicator light.

### Warning

- DO NOT reuse or clean the HEPA-Rx filter and the Activated carbon filter.
- DO NOT clean the HEPA-Rx filter, the Activated carbon filter and any other parts with liquid, especially alcohol, gasoline, paint thinner, etc. It may cause fire!
- Never look directly at UV-C+ lamps. Direct exposure to the light can cause temporary or chronic damage to your eyesight, or even blindness.
- The Photocatalytic filter is permanent and never need to be replaced. When there is dust on it, clean the dust off using a vacuum cleaner dusting brush. Do not wash it in water.

## TROUBLESHOOTING

Most service problems that appear to be major can often be resolved easily. You can be your own troubleshooter by reviewing the following guide. All other major servicing should be done by an Ideal Warehouse Innovations authorized service center.

| <i>Case</i>                         | <i>What to check</i>  | <i>Measure</i>   |
|-------------------------------------|---|--|
| The unit does not operate           | Power failure?<br>Power plug disconnected?<br>Bottom plate or interlock switch failure? | Check other electrical appliances.<br>Make sure plug is fully inserted.<br>The unit does not operate when the bottom plate is detached.<br>Install properly. Check interlock switch. |
| When functions do not work properly | There is too much dust on the HEPA-Rx filter or Activated carbon filter?                | Replace the HEPA-Rx filter or the Activated carbon filter.   |

UV-C+ Bulbs should only be purchased from Ideal Warehouse Innovations or an authorized dealer. This will ensure that you are receiving UV-C+ bulbs that do not generate ozone. Many after-market sellers are selling ozone-generating UV-C+ bulbs.

TO ORDER FILTERS OR UV-C+ BULBS - [www.idealwarehouse.com](http://www.idealwarehouse.com)  
MODEL: JADE2.0 (SCA5100C)



**IDEAL WAREHOUSE**  
INNOVATIONS INC<sup>®</sup>

Protecting Your People

Ontario | Ohio | California

Tel: 1-866-828-6737

[www.idealwarehouse.com](http://www.idealwarehouse.com)

[info@idealwarehouse.com](mailto:info@idealwarehouse.com)