



Reversing the Door Swing

Model(s) – TUC/TWT-24/24F & TSSU/TUC/TWT-27/27F

Required Tools

- 1/4" Socket
- 5/16" Socket
- 3/8" Socket (27/27F)
- 7/16" Socket (24/24F)
- Ratchet
- 1/4" Combo Wrench
- Phillips Screwdriver
- Putty Knife
- Hammer

Step 1

With a socket, remove the lower hinge bracket from the cabinet (fig. 1). Then, remove the door.

NOTE: Required socket varies by model size. See the required tools list for details.

Take care to not snap the upper hinge bushing (fig. 2).

TUC/TWT-24/24F models only

Move the front grill to the opposite side before proceeding.

1. With a Phillips screwdriver, unscrew the front grill.
2. With a 7/16" socket, move the bolts (fig. 3) to the opposite side.
3. Shift the grill to the side. See fig. 4.
4. Align the grill with the pre-drilled hole, and then secure it.

Step 2

Remove the cartridge hinge assembly from the door. See fig. 5.

Step 3

With a putty knife, pry the square bushing from the door. Then, with a hammer, tap the bushing into the cartridge hinge's original location.

NOTE: When repositioning the bushing, gently tap it to prevent damage.

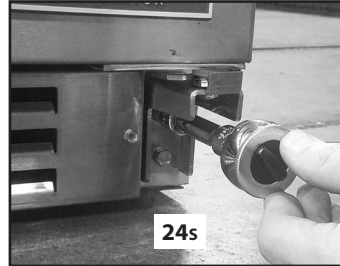


Fig. 1. The 24 and 27 models use different lower hinges.

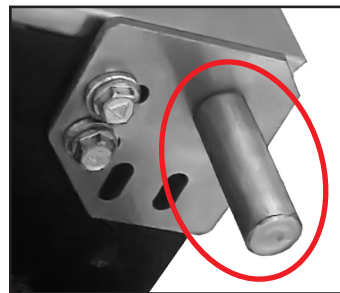


Fig. 2. Do not snap the bushing on the top hinge.

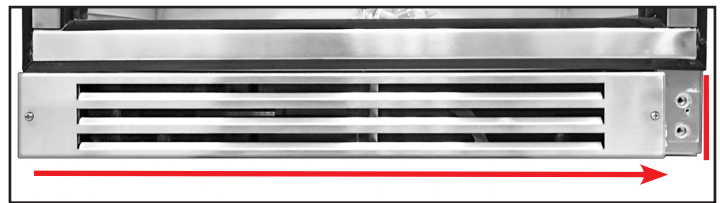


Fig. 3. TUC/TWT-24/24F ONLY: Move the front grill to the opposite side.

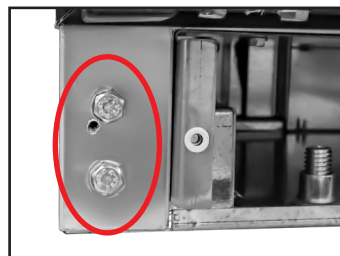


Fig. 4. Move the bolts to the lower hinge bracket's original location.



Fig. 5. Remove the cartridge hinge assembly.

CONTACTS

NORTH AMERICA - CANADA AND CARIBBEAN

Warranty Phone: +1 855 878 9277
Warranty Fax: +1 636 980 8510
Technical Phone: +1 855 372 1368
Warranty Email: warrantyinquiries@truemfg.com
Technical Email: service@truemfg.com
7:00-7:00 CST Monday-Thursday,
7:00-6:00 Friday, 8:00-12:00 Saturday

MEXICO

Phone: +52 555 804 6343/44
Toll Free in Mexico: 01 800 202 0687
service-mexicocity@truemfg.com
9:00am – 5:30pm M-F

LATIN AMERICA

Phone: +56 232 13 3600
servicelatam@truemfg.com
9:00am – 5:30pm M-F

UK, IRELAND, MIDDLE EAST, AFRICA AND INDIA

Phone: +44 (0) 1709 888 080
UK Freephone: 0 800 783 2049
service-emea@truemfg.com
8:30am – 5:00pm M-F

EUROPEAN UNION AND COMMONWEALTH OF INDEPENDENT STATES

Phone: +49 (0) 7622 6883 0
service-emea@truemfg.com
8:00am – 5:00pm M-F

AUSTRALIA

Phone: +61 2 9618 9999
service-aus@truemfg.com
8:30am – 5:00pm M-F



Reversing the Door Swing

Model(s) – TUC/TWT-24/24F & TSSU/TUC/TWT-27/27F

Step 4

With a 5/16" socket, move the machine screws to the opposite side square bushing.

Step 5

Rotate the hinge bracket (see fig. 6), and then secure the cartridge hinge assembly to the opposite side of the door.

NOTE: Keep the washers in their original order. See fig. 7. Always angle the hinge bracket towards the center of the cabinet to keep tension on the spring. See fig. 8.

Step 6

With a putty knife, pry the cap and plastic bushing from the top of the door and swap their positions.

Step 7

With a 1/4" socket, move the top hinge to the opposite side of the cabinet. See fig. 9.

NOTE: Do not forget the hinge's washers.

Step 8

Install the door.

1. Position the door.

NOTE: Take care to not snap the upper hinge bushing. See fig. 10.

2. Secure the lower hinge bracket to the unit.

NOTE: Do not forget the hinge's washers. See fig. 11. Check the door alignment while securing the hinge. Adjust the hinges as needed. To adjust the upper hinge, True recommends using a 1/4" combo wrench.



Fig. 6. Remove the hinge bracket from the cartridge spring and then rotate it.

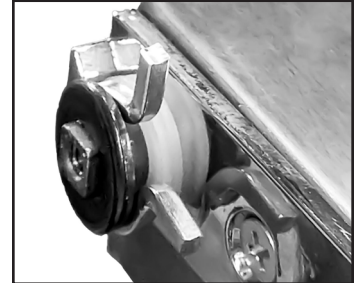
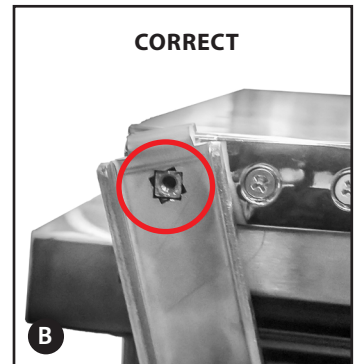


Fig. 7. Keep the washers in their original order.



Fig. 8. Images show the front of the door facing up.

A: Incorrect; hinge bracket has not been rotated and angles outward.



B: Correct; hinge bracket has been rotated and angles inward towards the cabinet center; star-shaped hole keeps the correct spring tension.

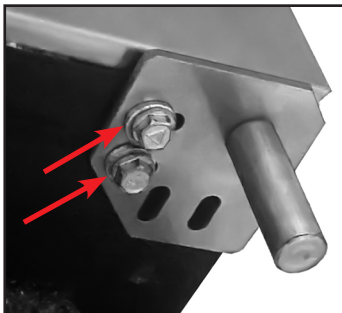


Fig. 9. Do not forget the washers.



Fig. 10. If needed, only use shallow angles when positioning the door.

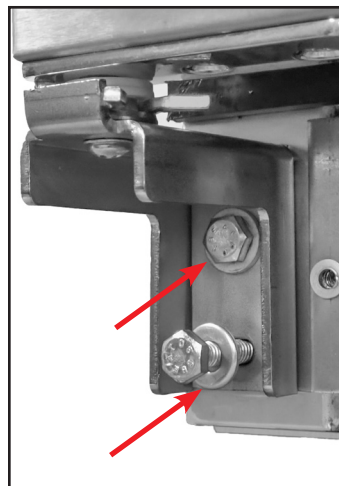


Fig. 11. Do not forget the washers.