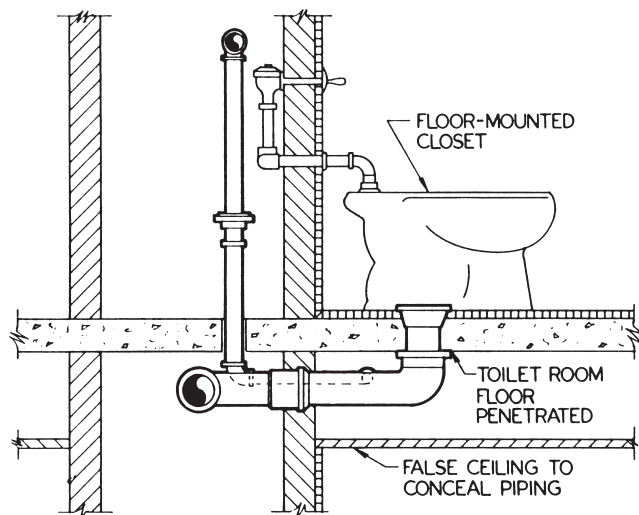


INSTALLATION OF OFF-THE-FLOOR FIXTURES

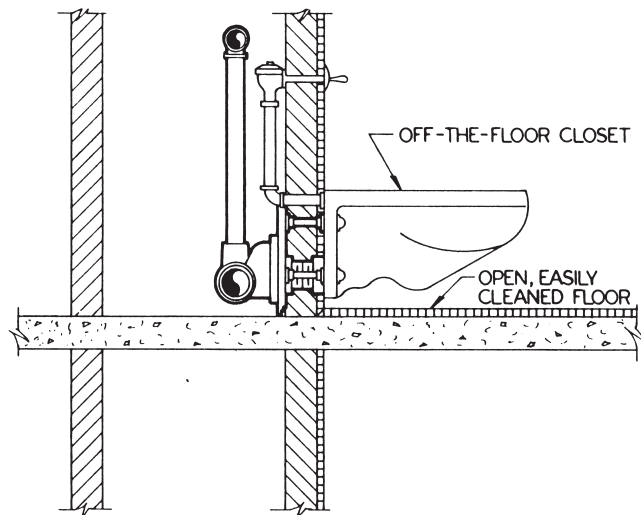
Many factors, including cost, material, labor required, space, handling and others must be thoroughly evaluated when planning an installation. With on-the-floor water closets, slabs must be penetrated and sleeved at each fixture to accommodate waste piping which, in many instances, has to be suspended below the slab.

Such suspended piping requires concealment in multi-story installations, thereby necessitating drop or furred ceilings in the rooms below. The fitting and assembly of waste piping in such installations, as a rule, must be accomplished on the spot with the aid of scaffolding and extra mechanics, which contributes to high construction costs and affects not only the mechanical contractor but the structural, floor, wall and ceiling mechanics as well.

Conversely, with off-the-floor fixtures, there is no slab penetration in toilet room areas. The support and piping systems are concealed behind the walls. Such systems are ideally suited to the modern modular plumbing concept as they are readily fabricated either on site or in the contractor's shop at significant savings over conventional piece-by-piece assembly. A well planned and executed off-the-floor fixture installation today will provide lasting benefits appreciated by future building occupants and owners.



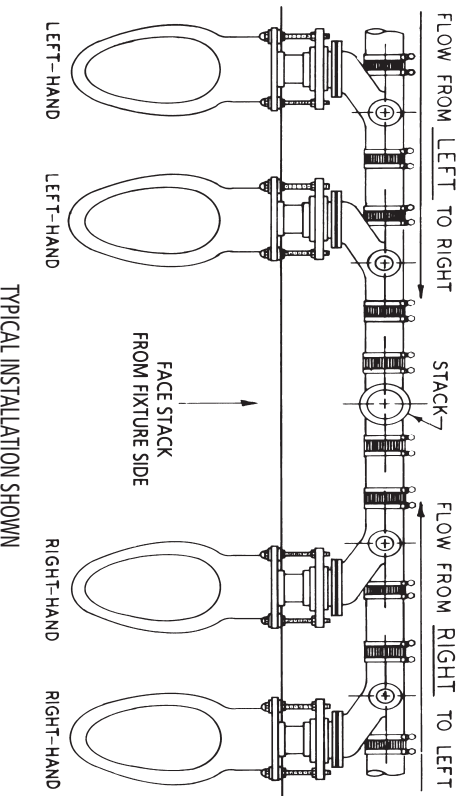
ON-THE-FLOOR WATER CLOSET



OFF-THE-FLOOR WATER CLOSET

Horizontal Fitting & Carrier Selection

DIAGRAM TO DETERMINE LEFT- OR RIGHT-HAND CLOSET FITTINGS

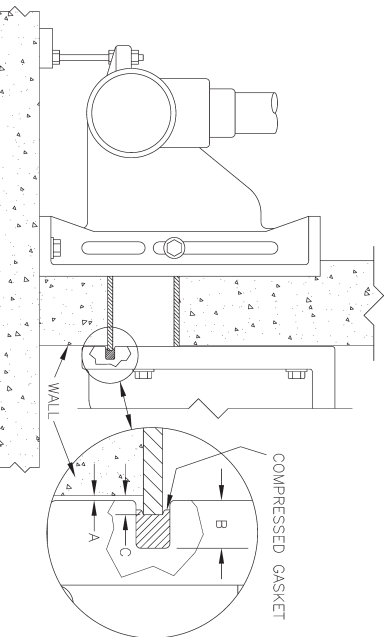


1. If flow in waste line is from the right of the stack, the closet fitting should be a right-hand fitting.
2. If flow in waste line is from the left of the stack, the closet fitting should be a left-hand fitting.

Extension Length Determination

This is a side view. The enlarged inset shows the depth of the gasket within the groove of the fixture and the extension with proper pressure on the gasket.

When the closet is installed on the carrier, the front end of the extension must be located properly in order to compress the gasket enough so that the gasket's adhesive coated surfaces are in contact with the china and the face of the extension. This will help ensure a tight seal.



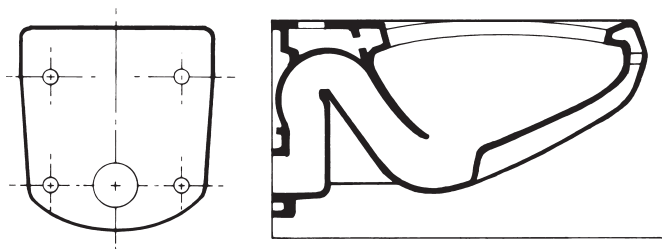
For closets which have a groove with a rectangular cross-section, use this formula: $C = A + B - 1/2"$

Where: A = Distance from Closet to Wall B = Depth of Groove in

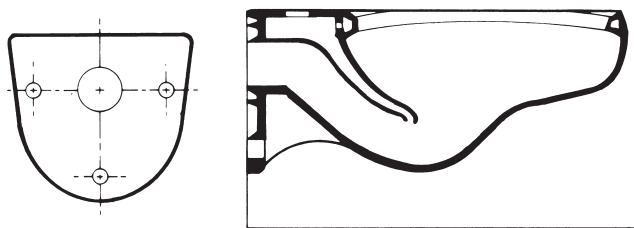
Closet C = Distance Extension Extends from Wall

For closets which have a groove with a V-shaped cross-section:

Use the above formula, but an additional 1/8" (or more) may be added to C.

SIPHON JET

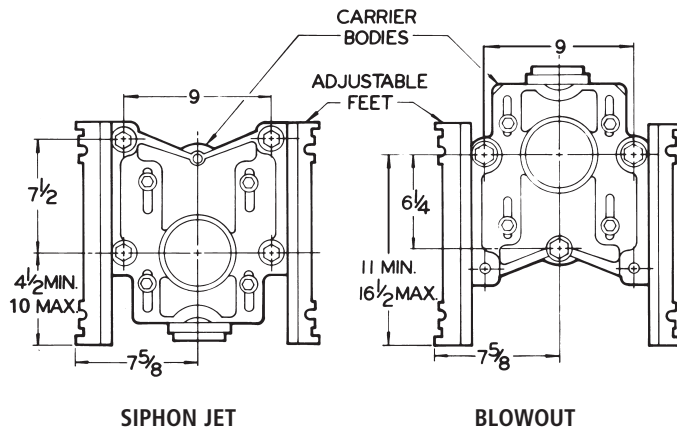
This type, because of its quiet, efficient, sanitary flushing action, is usually specified in most commercial, institutional and hotel applications. Water is introduced into the bowl through the rim and up leg of trap through jets placed there to fill the trapway thus creating siphonic action to quickly evacuate the bowl. The large water surface in the bowl insures sanitation.

BLOWOUT

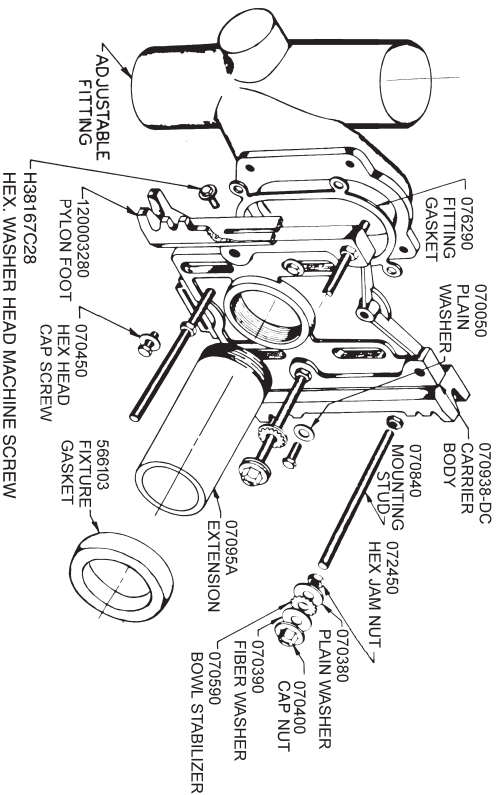
This type is particularly suited to heavy use applications such as public facilities in stadiums and terminals. The flushing action produced by the jet of water in the outlet passage is strong for rapid evacuation of the bowl. Fouling problems are minimal. However, because of the powerful flushing action, this type of closet is noisy to operate.

ONE CARRIER FOR SIPHON JET OR BLOWOUT

CHASE-SAVER® is shipped pre-assembled for siphon jet closets and is quickly inverted for use with blowout closets.

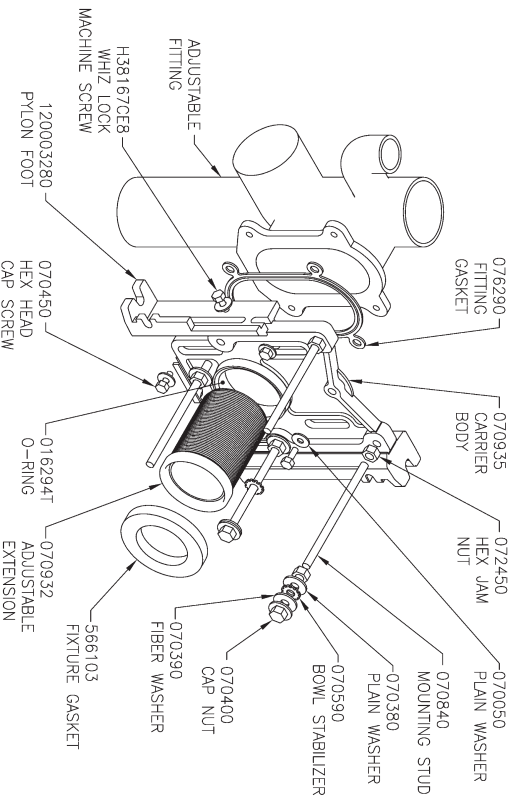


12000 -PF



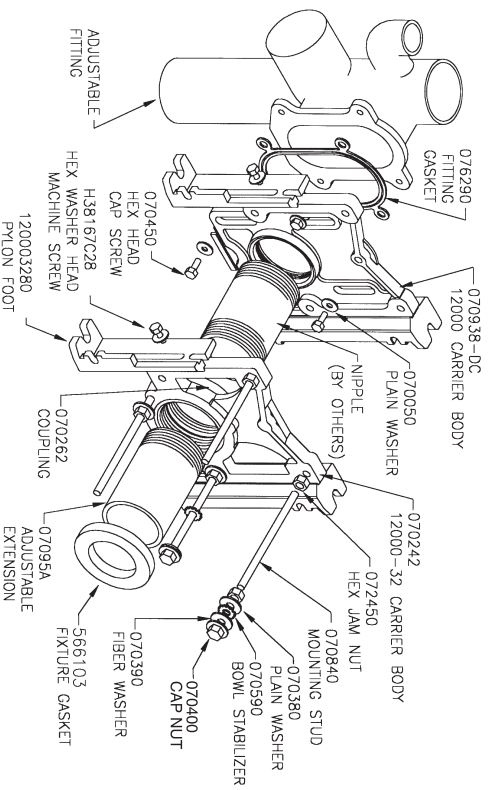
SPECIFICATION: JOSAM 12000-PF Series coated cast iron CHASE-SAVER® II Closet Carrier with adjustable connection, adjustable pylon feet, ABS extension with integral test cap, chrome plated trim, coated accessories and JIFFEE-SEAL Neoprene fixture gasket, for use with blowout or siphon jet water closets.

12000 -OR



SPECIFICATION: JOSAM 12000-OR Series coated cast iron CHASE-SAVER® II Closet Carrier with adjustable connection, adjustable pylon feet, ABS extension with integral test cap, chrome plated trim, coated accessories and JIFFEE-SEAL Neoprene fixture gasket, for use with blowout or siphon jet water closets.

-32 WIDE CHASE CLOSET CARRIER



SPECIFICATION: JOSAM -32 coated cast iron Wide Chase Closet Carrier with adjustable closet connection, adjustable pylon feet, ABS extension with integral test cap, chrome plated trim, coated accessories and JIFFEE-SEAL Neoprene fixture gasket, for use with blowout or siphon jet water closets.

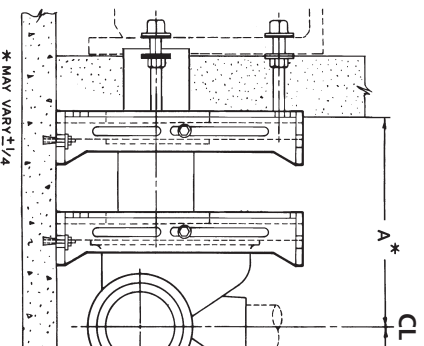
-32 NIPPLE SELECTION

-32 OPTION RECOMMENDED LENGTH NIPPLES (BY OTHERS)

A*	Length Nipple To Use
Minimum Chase	2-7/8
9-1/4	4
10-1/4	5
11-1/4	6
12-1/4	7
13-1/4	8
14-1/4	9
15-1/4	10
16-1/4	11
17-1/4	12
18-1/4	12

Recommended Pipe: 4" Galvanized Steel

NIPPLE LENGTH DRAWING

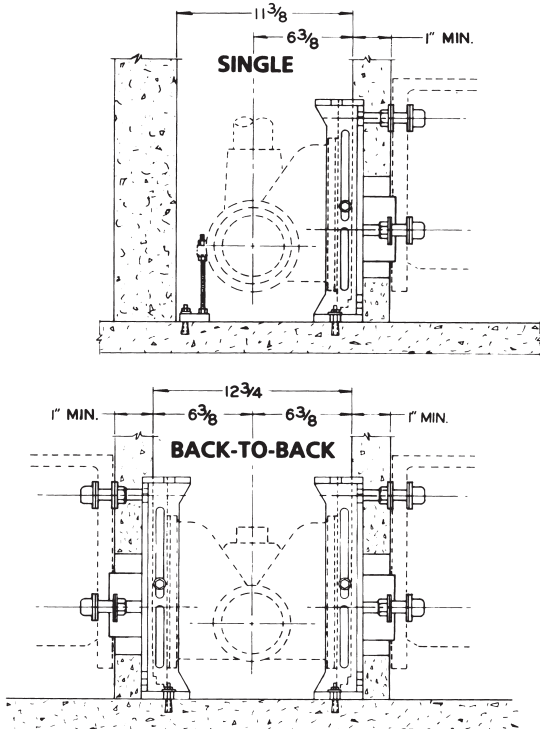


To provide proper fixture support, the carrier should be set directly behind or within the wall. To accomplish this in wide pipe chases with DWV piping either centered or offset, it is necessary to separate carrier and drainage fitting as required with nipples that are longer than 2-7/8". The minimum dimension (A*) was determined using a 2-7/8" length nipple. Nipples ranging in length from 2-7/8" to 12" in 1 inch increments are identified on this page for specification when such construction conditions are encountered.

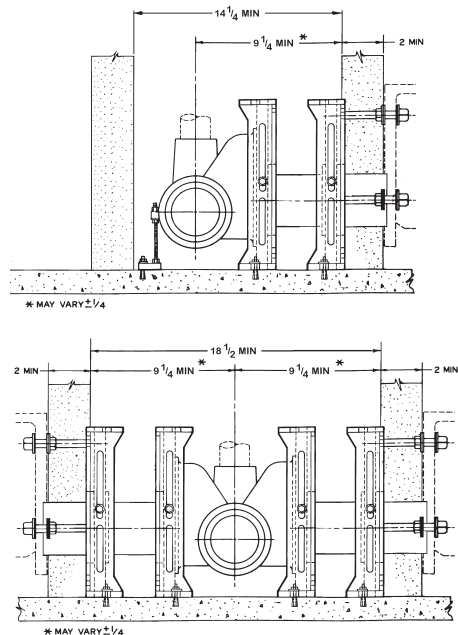


WARNING: Cancer and Reproductive Harm - www.p65warnings.ca.gov

12000 Minimum Dimensions



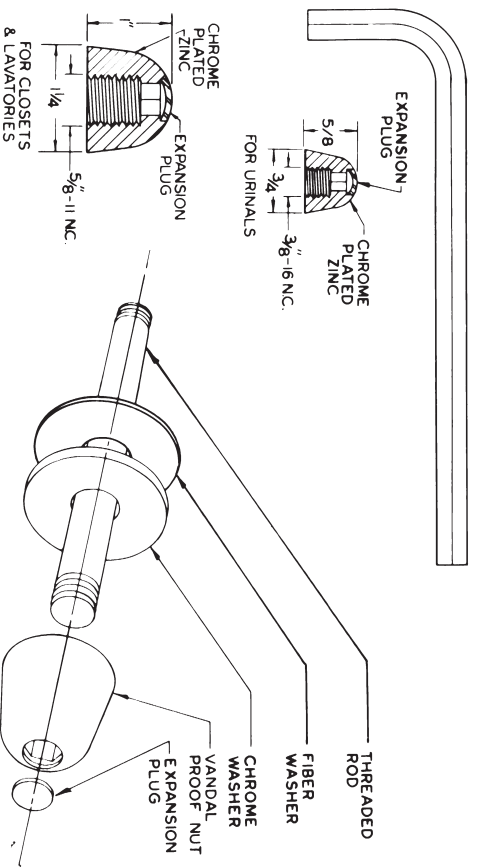
12000-32 Minimum Dimensions



* MAY VARY $\pm 1/4$ "

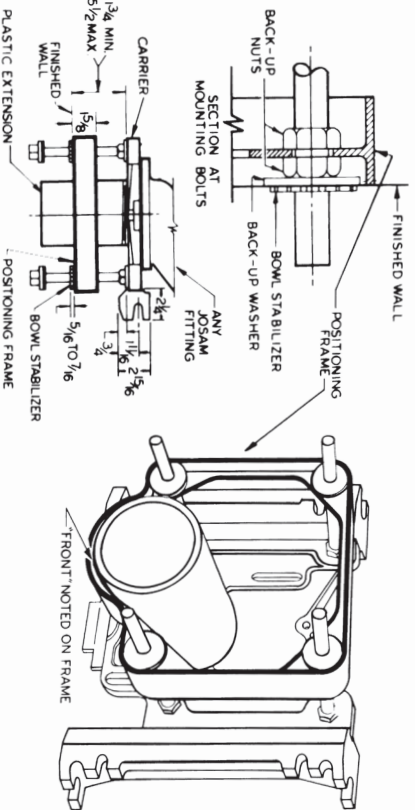
ADJUSTABLE EXTENSIONS AVAILABLE FOR -32 OPTION

Wall Thickness	Length of Extension	Length of Threaded Rod	ABS Extension Part No.
1" through 5-1/2"	7"	9-1/2"	07095A
5-1/2" through 10-1/2"	12"	14-1/2"	07095E



(-VP) OPTION, VANDAL-PROOF TRIM

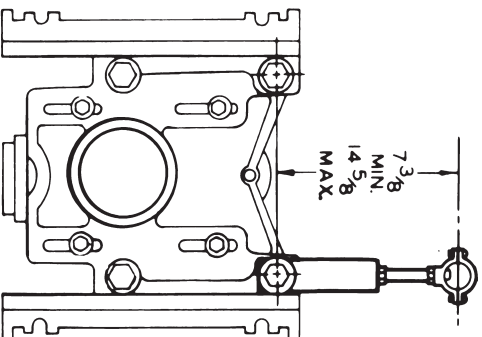
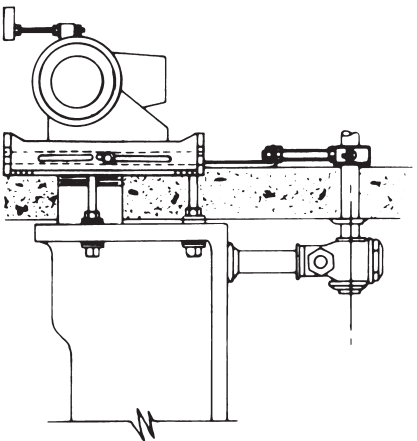
The JVSAM Vandal-Proof trim is designed to prevent tampering and possible damage to the fixture caused by vandalism. The Vandal-Proof trim can be used in place of the regular JVSAM cap nuts. Trim is installed using a hex key. After installation is complete, chrome plated expansion plugs which match the nuts, snap into place minimizing the chances of vandalism.



(-1) OPTION, TRU-SET POSITIONING FRAME (Siphon Jet Closets Only)

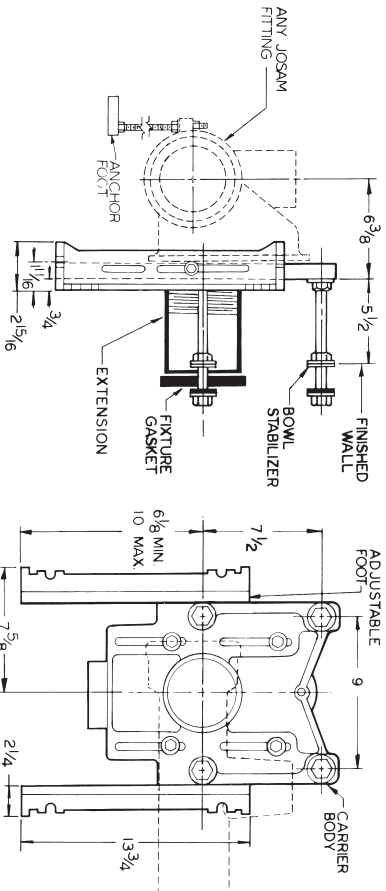
Made of high impact polystyrene, the TRU-SET Positioning Frame offers many advantages to the plumbing contractor. The positioning frame is mounted on the carrier studs at the time the carrier is being installed, thus it acts as a guide and template, eliminating problems caused by normal dimensional variations when the wall is being erected. Studs and adjustable extension are set to the frame, eliminating further adjustment when the fixture is being hung. Chances of bowl breakage are minimized since bowl is held the correct distance from finished wall.

NOTE: Sold only with JVSAM closet carriers.



(-6) OPTION, SUPPLY PIPE SUPPORT

Support assembly attaches to an upper carrier mounting stud and securely holds water supply pipe running to the flush valve. This hanger prevents movement of water piping during and after construction, protecting piping as well as the flush valve. When ordering, specify type of pipe to be supported.



(-35) OPTION, CLOSET CARRIER FOR WHEELCHAIR HIGH ROUGH

This optional carrier can be used with all adjustable fittings. When used with blowout closets over 12 1/2", specify -M1358.

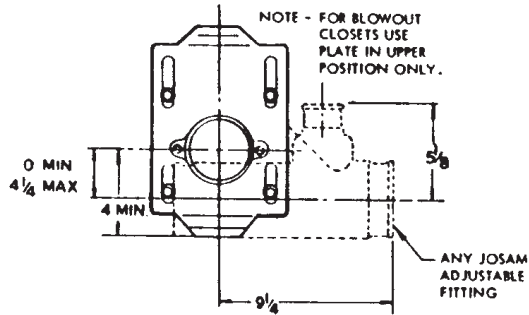
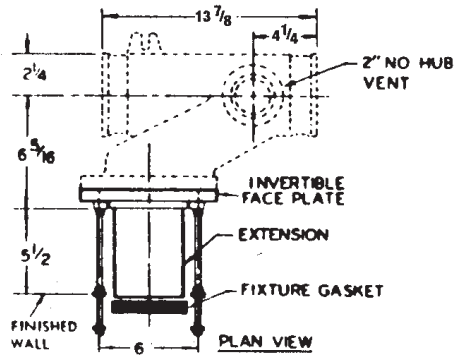


ILLUSTRATION A

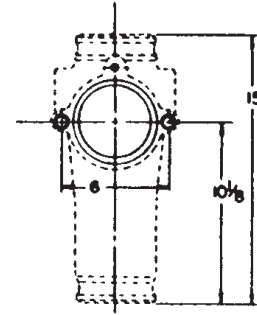
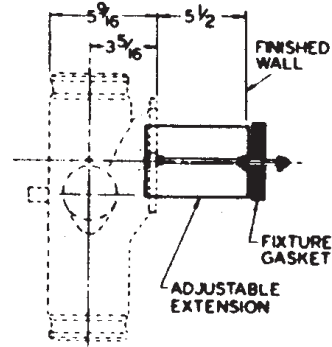
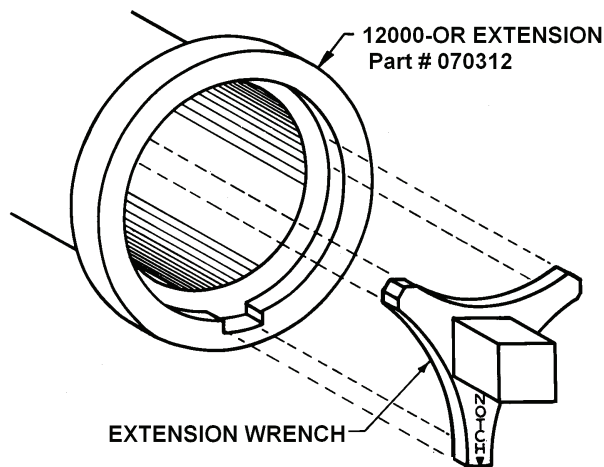


ILLUSTRATION B

(-24) OPTION, FOR FLOOR-MOUNTED BACK-OUTLET CHINA CLOSETS

This option adapts adjustable as well as other types of fittings for securing floor-mounted back-outlet China closets. Any adjustable fitting is adapted as shown in Illustration A. Other types of fittings are provided with bosses to attach the closet securing studs at the correct dimensions for this type of closet. See Illustration B.

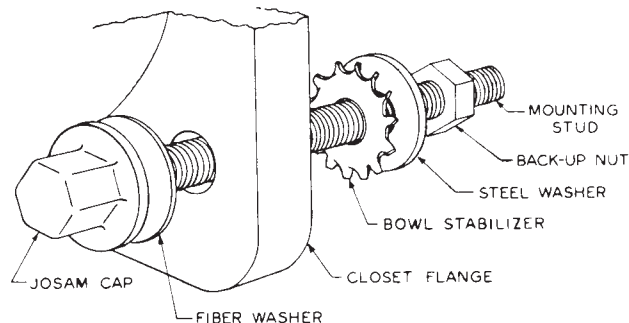
12000-OR WRENCH



EXTENSION WRENCH

Use 12000-OR wrench to apply forward pressure as you thread extension into 12000-OR faceplate.

BOWL TO CARRIER INSTALLATION



FH Hardware Part #: 565985T
Mounting Stud and Back-up Nut
not included in FH Hardware Kit.

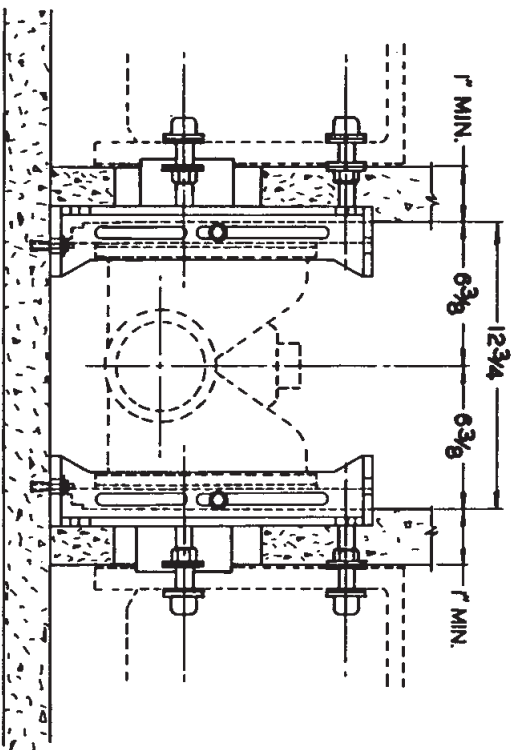
To set bowl using finished hardware group "FH," put a hex nut, back-up washer, and a bowl stabilizer on each mounting stud.

Adjust with front of back-up nut and washer at finished wall line.

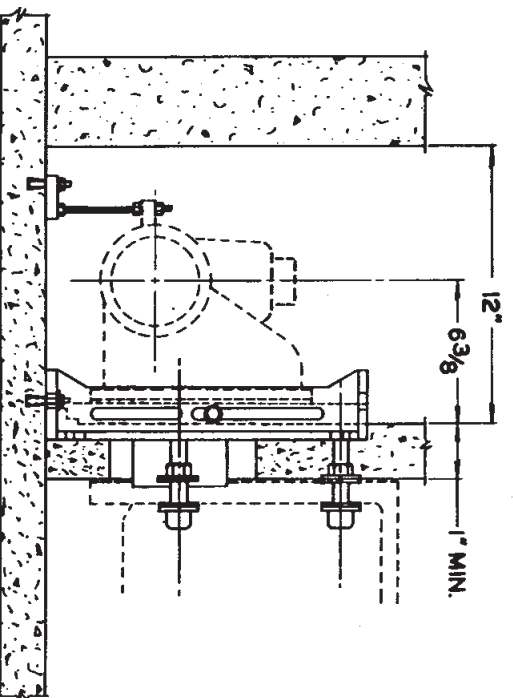
If the back-up nut and washer are moved to clear irregularities in the finished wall, the extension **MUST** be adjusted an equal amount.

Place fixture gasket in toilet outlet and hang closet. Assemble fiber washers and JOSAM cap nuts to two studs on the center line of the closet outlet and one other stud below and tighten with a wrench.

Assemble fiber washer and JOSAM cap nut to remaining stud, hand tighten and take 1/2 turn with a wrench.



Installation of back-to-back 12000-PF Series Adjustable Carrier showing minimum extension.

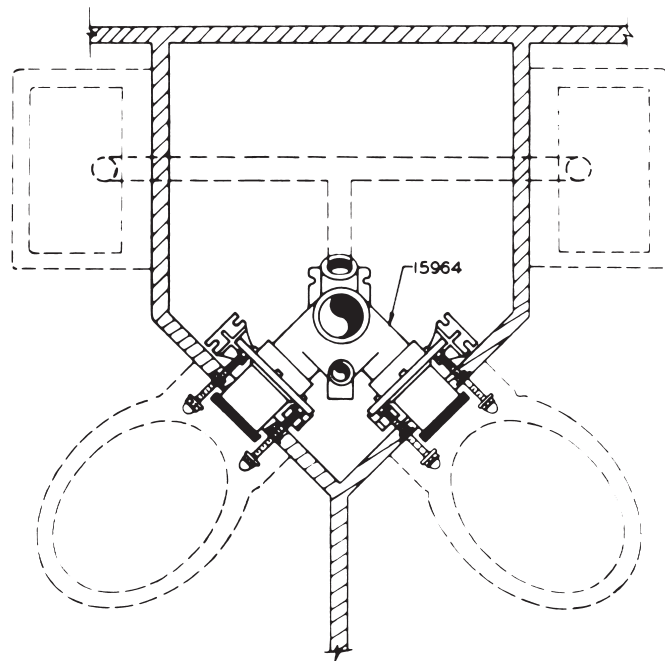


Installation of 12000-PF Series Adjustable Carrier in a standard 12" wide pipe chase showing minimum extension.

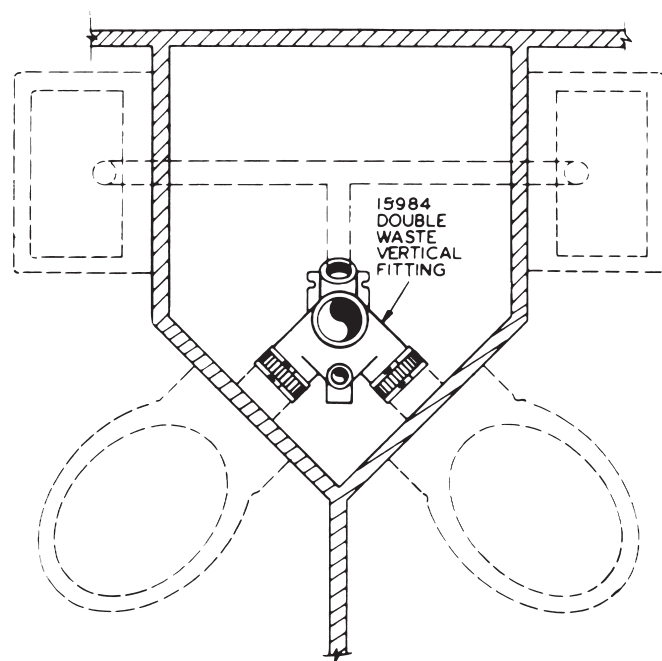
⚠ WARNING: Cancer and Reproductive Harm - www.p65warnings.ca.gov

Installations 90° Double Waste Fitting 15964 & 15984 Series

Installations of 15964 and 15984 Series double vertical 90° no-hub fittings where a closet and lavatory are installed in each room with one stack serving two rooms.



15964 SERIES SHOWN IN A TYPICAL ROOM BACK DISCHARGE TOILET FACILITY

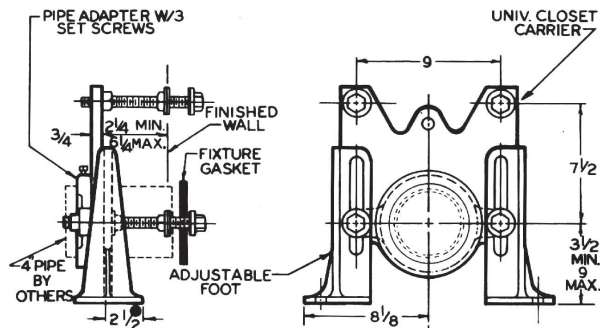


15984 SERIES DOUBLE WASTE VERTICAL FITTING SHOWN INSTALLED IN A TYPICAL ROOM BOTTOM DISCHARGE TOILET FACILITY LAYOUT

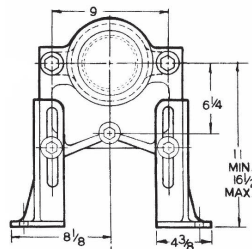
SPECIFICATION:

JOSAM SERIES 11001 COATED CAST IRON UNIVERSAL PIPE GRIP CLOSET CARRIER WITH 4" PIPE ADAPTER, ADJUSTABLE FEET AND FINISH HARDWARE AND TRIM TO SUPPORT SIPHON JET OR BLOWOUT WALL-HUNG WATER CLOSET. WASTE PIPING AND FITTING SUPPLIED BY OTHERS.

**CLOSET CARRIER
WITH PIPE ADAPTER**

 SERIES **11001**


INVERT CARRIER PLATE FOR BLOWOUT BOWLS



DATE OF LAST CHANGE: 06/11/08

 DIMENSIONS ARE SUBJECT TO MANUFACTURERS
TOLERANCES AND CHANGE WITHOUT NOTICE.
WE CAN ASSUME NO RESPONSIBILITY FOR
USE OF SUPERSEDED OR VOID DATA.

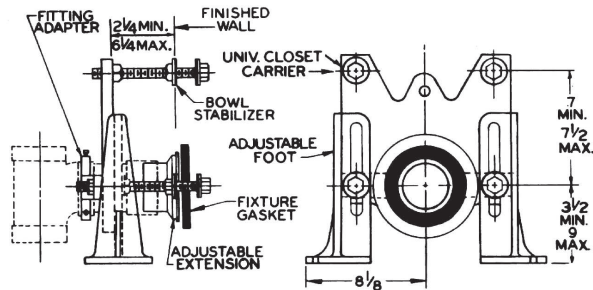
JOSAM COMPANY
MICHIGAN CITY, INDIANA

NOTES

SPECIFICATION:

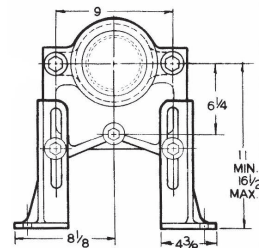
JOSAM SERIES 11007 AND 11008 COATED CAST IRON UNIVERSAL PIPE GRIP CLOSET CARRIER WITH 3" OR 4" COPPER PIPE ADAPTER, ADJUSTABLE FEET AND FINISH HARDWARE AND TRIM TO SUPPORT SIPHON JET OR BLOWOUT WALL-HUNG WATER CLOSET. WASTE PIPING AND FITTING SUPPLIED BY OTHERS.

**CLOSET CARRIER
WITH COPPER PIPE ADAPTER**

 SERIES **11007/11008**


11007	CARRIER FOR 3" COPPER PIPE
11008	CARRIER FOR 4" COPPER PIPE

INVERT CARRIER PLATE FOR BLOWOUT BOWLS



DATE OF LAST CHANGE: 06/11/08

 DIMENSIONS ARE SUBJECT TO MANUFACTURERS
TOLERANCES AND CHANGE WITHOUT NOTICE.
WE CAN ASSUME NO RESPONSIBILITY FOR
USE OF SUPERSEDED OR VOID DATA.

JOSAM COMPANY
MICHIGAN CITY, INDIANA

NOTES


WARNING: Cancer and Reproductive Harm - www.p65warnings.ca.gov

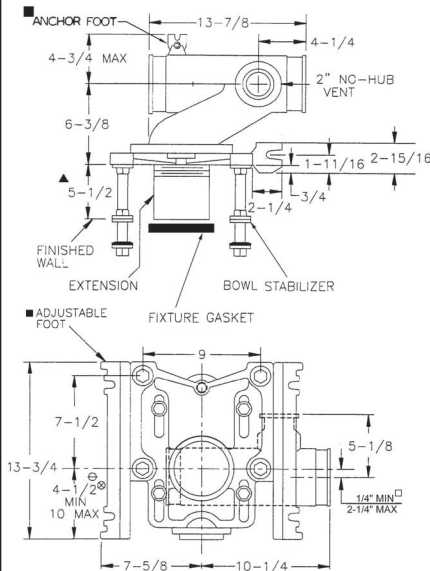
SPECIFICATION:

JOSAM 12674 SERIES COATED CAST IRON SINGLE HORIZONTAL 4" NO-HUB LEFT-HAND OFFSET FITTING WITH 2" NO-HUB VENT AND ADJUSTABLE CARRIER BODY, INVERTIBLE FOR SIPHON JET OR BLOWOUT CLOSETS, WITH ABS EXTENSION WITH INTEGRAL TEST CAP, PYLON FEET, ANCHOR FOOT, PLATED HARDWARE AND NEOPRENE FIXTURE GASKET.

**CLOSET CARRIER
LEFT HAND**

SERIES

12674



▲ FOR DIMENSION SHORTER THAN 5-1/2" (1" MIN) CUT EXTENSION. FOR LONGER EXTENSION (10-1/2" MAX) SPECIFY (-10)

■ RECOMMEND FEET BE SECURED TO FLOOR WITH 1/2" BOLTS AND ANCHORS (BY OTHERS).

⊗ FOR SIPHON JET ROUGHING OVER 6" OR BLOWOUT ROUGHING OVER 12-1/2" SPECIFY ON ORDER.

SIPHON JET DIMS SHOWN. FOR BLOWOUT DIMS, USE:

□ MIN 2" & MAX 4"

⊖ MIN 11" & MAX 16-1/2"

◆ AUX INLET IS 6" OFFSET FROM VENT

- PF PYLON FOOT, STD.
- OR O-RING CARRIER
- SD SPECIAL-DUTY 500 LB. CARRIER
- HS HUB & SPIGOT
- ◆ AUX AUXILIARY INLET (2" NO-HUB)
- ◆ HUB AUX HUB & SPIGOT
- VP VANDAL-PROOF TRIM
- -1 POSITIONING FRAME

- -6 SUPPLY PIPE SUPPORT (SPECIFY TYPE OF PIPE)
- -10 ABS EXTENSION THROUGH 10-1/2" WALL
- -24 FLOOR MOUNTED BACK OUTLET CHINA BOWL
- -30 CAST IRON ADJ. EXTENSION W/ CONNECTOR
- -30-2 CAST IRON ADJ. EXTENSION W/ CONNECTOR & TEST CAP
- -32 CARRIER FOR WIDE CHASE INSTALLATIONS
- -35 CARRIER FOR WHEELCHAIR HIGH ROUGH
- -58 HORIZONTAL NO-HUB CAST LONG BARREL

▼ SEPARATE SUBMITTAL FOR THIS OPTION AVAILABLE

DRAWING No. 05/10/08

JOSAM COMPANY
MICHIGAN CITY, INDIANA

NOTES:

SPECIFICATION:

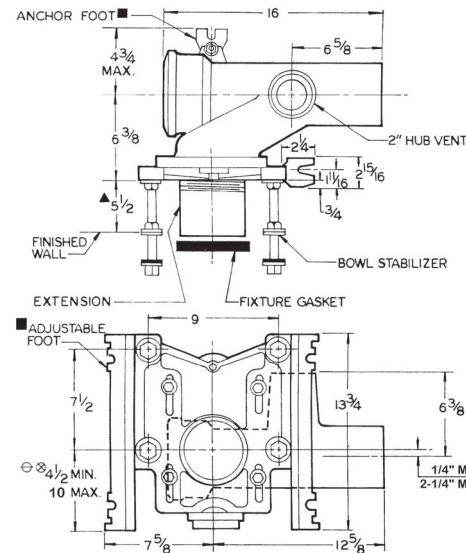
JOSAM 12674-HS SERIES COATED CAST IRON SINGLE HORIZONTAL 4" HUB & SPIGOT LEFT-HAND OFFSET FITTING WITH 2" HUB & SPIGOT VENT AND ADJUSTABLE CARRIER BODY, INVERTIBLE FOR SIPHON JET OR BLOWOUT CLOSETS, WITH ABS EXTENSION WITH INTEGRAL TEST CAP, PYLON FEET, ANCHOR FOOT, PLATED HARDWARE AND NEOPRENE FIXTURE GASKET.

**CLOSET CARRIER
LEFT HAND**

SERIES

12674-HS

FORMERLY 12004 SERIES



▲ FOR DIMENSION SHORTER THAN 5-1/2" (1" MIN) CUT EXTENSION. FOR LONGER EXTENSION (10-1/2" MAX) SPECIFY (-10)

■ RECOMMEND FEET BE SECURED TO FLOOR WITH 1/2" BOLTS AND ANCHORS (BY OTHERS).

⊗ FOR SIPHON JET ROUGHING OVER 6" OR BLOWOUT ROUGHING OVER 12-1/2" SPECIFY ON ORDER.

SIPHON JET DIMS SHOWN. FOR BLOWOUT DIMS, USE:

□ MIN 2" & MAX 4"

⊖ MIN 11" & MAX 16-1/2"

- PF PYLON FOOT, STD.
- OR O-RING CARRIER
- SD SPECIAL-DUTY 500 LB. CARRIER
- HS HUB & SPIGOT
- ◆ AUX AUXILIARY INLET, 2"
- VP VANDAL-PROOF TRIM
- -1 POSITIONING FRAME
- -6 SUPPLY PIPE SUPPORT (SPECIFY TYPE OF PIPE)

- -10 ABS EXTENSION THROUGH 10-1/2" WALL
- -24 FLOOR MOUNTED BACK OUTLET CHINA BOWL
- -30 CAST IRON ADJ. EXTENSION W/ CONNECTOR
- -30-2 CAST IRON ADJ. EXTENSION W/ CONNECTOR & TEST CAP
- -32 CARRIER FOR WIDE CHASE INSTALLATIONS
- -35 CARRIER FOR WHEELCHAIR HIGH ROUGH
- -58 HORIZONTAL HUB AND SPIGOT CAST LONG BARREL

DRAWING No. 05/10/08

JOSAM COMPANY
MICHIGAN CITY, INDIANA

NOTES:

A-12623L-K

A-14576L-K

SPECIFICATION:

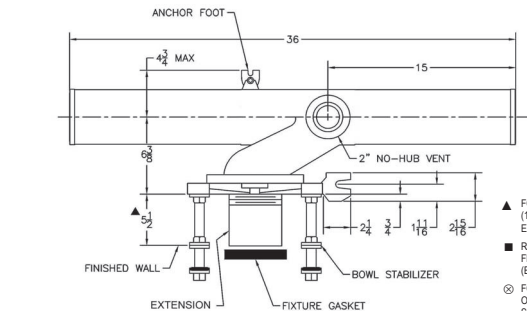
JOSAM 12674-58 SERIES COATED CAST IRON LONG BARREL LEFT-HAND HORIZONTAL 4" NO-HUB FITTING WITH 2" NO-HUB VENT AND ADJUSTABLE CARRIER BODY. ABS EXTENSION WITH INTEGRAL TEST CAP. PYLON FEET, ANCHOR FOOT, PLATED HARDWARE AND NEOPRENE FIXTURE GASKET, INVERTIBLE FOR SIPHON JET OR BLOWOUT CLOSETS.

CLOSET CARRIER

LEFT HAND

SERIES

12674-58



- ▲ FOR DIMENSION SHORTER THAN 5-1/2" (1" MIN) CUT EXTENSION. FOR LONGER EXTENSION (10-12" MAX) SPECIFY (+10)
- RECOMMEND FEET BE SECURED TO FLOOR WITH 1/2" BOLTS AND ANCHORS (BY OTHERS).
- ⊗ FOR SIPHON JET ROUGHING OVER 6" OR BLOWOUT ROUGHING OVER 12-1/2" SPECIFY ON ORDER.

SIPHON JET DIMS. SHOWN.
FOR BLOWOUT DIMS. USE:
□ MIN 2" & MAX 4"
⊖ MIN 11" & MAX 16-1/2"

- PF PYLON FOOT, STD.
- OR O-RING CARRIER
- SD SPECIAL-DUTY 500 LB. CARRIER
- HS HUB & SPIGOT
- AUX AUXILIARY INLET, 2"
- VP VANDAL-PROOF TRIM
- 1 POSITIONING FRAME
- 6 SUPPLY PIPE SUPPORT (SPECIFY TYPE OF PIPE)

- 10 ABS EXTENSION THROUGH 10-1/2" WALL
- 24 FLOOR MOUNTED BACK OUTLET CHINA BOWL
- 30 CAST IRON ADJ. EXTENSION W/ CONNECTOR
- 30-2 CAST IRON ADJ. EXTENSION W/ CONNECTOR & TEST CAP
- 32 CARRIER FOR WIDE CHASE INSTALLATIONS
- 35 CARRIER FOR WHEELCHAIR HIGH ROUGH
- 58 HORIZONTAL NO-HUB CAST LONG BARREL

SPECIFICATION:

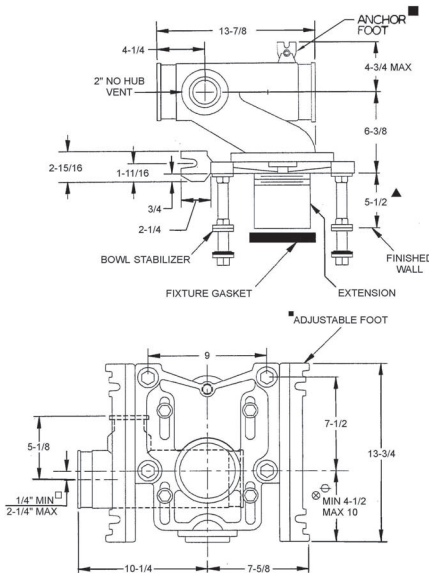
JOSAM 12684 SERIES COATED CAST IRON SINGLE HORIZONTAL 4" NO-HUB RIGHT-HAND OFFSET FITTING WITH 2" NO-HUB VENT AND ADJUSTABLE CARRIER BODY. INVERTIBLE FOR SIPHON JET OR BLOWOUT CLOSETS. WITH ABS EXTENSION WITH INTEGRAL TEST CAP. PYLON FEET, ANCHOR FOOT, PLATED HARDWARE AND NEOPRENE FIXTURE GASKET.

CLOSET CARRIER

RIGHT HAND

SERIES

12684



- ▲ FOR DIMENSION SHORTER THAN 5-1/2" (1" MIN) CUT EXTENSION. FOR LONGER EXTENSION (10-12" MAX) SPECIFY (+10)
- RECOMMEND FEET BE SECURED TO FLOOR WITH 1/2" BOLTS AND ANCHORS (BY OTHERS).
- ⊗ FOR SIPHON JET ROUGHING OVER 6" OR BLOWOUT ROUGHING OVER 12-1/2" SPECIFY ON ORDER.
- SIPHON JET DIMS. SHOWN.
FOR BLOWOUT DIMS. USE:
□ MIN 2" & MAX 4"
⊖ MIN 11" & MAX 16-1/2"
- ◆ AUX INLET IS 6" OFFSET FROM VENT

- PF PYLON FOOT, STD.
- OR O-RING CARRIER
- SD SPECIAL-DUTY 500 LB. CARRIER
- HS HUB & SPIGOT
- AUX AUXILIARY INLET (2" NO-HUB)
- AUXILIARY INLET (2" HUB)
- VP VANDAL-PROOF TRIM
- 1 POSITIONING FRAME

- 6 SUPPLY PIPE SUPPORT (SPECIFY TYPE OF PIPE)
- 10 ABS EXTENSION THROUGH 10-1/2" WALL
- 24 FLOOR MOUNTED BACK OUTLET CHINA BOWL
- 30 CAST IRON ADJ. EXTENSION W/ CONNECTOR
- 30-2 CAST IRON ADJ. EXTENSION W/ CONNECTOR & TEST CAP
- 32 CARRIER FOR WIDE CHASE INSTALLATIONS
- 35 CARRIER FOR WHEELCHAIR HIGH ROUGH
- 58 HORIZONTAL NO-HUB CAST LONG BARREL

▼ SEPARATE SUBMITTAL FOR THIS OPTION AVAILABLE

DRAWING No. 05/10/08

JOSAM COMPANY
MICHIGAN CITY, INDIANA

NOTES:

A-15151L-K

DRAWING No. 05/10/08

JOSAM COMPANY
MICHIGAN CITY, INDIANA

NOTES:

A-14576R-K

SPECIFICATION:

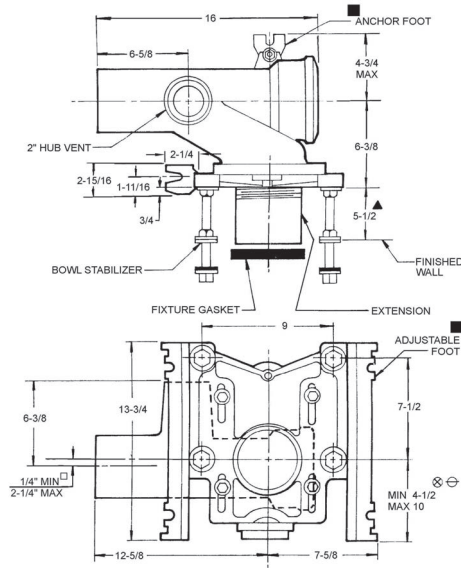
JOSAM 12684-HS SERIES COATED CAST IRON SINGLE HORIZONTAL 4" HUB & SPIGOT RIGHT-HAND OFFSET FITTING WITH 2" HUB & SPIGOT VENT AND ADJUSTABLE CARRIER BODY, INVERTIBLE FOR SIPHON JET OR BLOWOUT CLOSETS, WITH ABS EXTENSION WITH INTEGRAL TEST CAP, PYLON FEET, ANCHOR FOOT, PLATED HARDWARE AND NEOPRENE FIXTURE GASKET.

**CLOSET CARRIER
RIGHT HAND**

12684-HS

SERIES

FORMERLY 12024 SERIES



▲ FOR DIMENSION SHORTER THAN 5-1/2" (1" MIN) CUT EXTENSION. FOR LONGER EXTENSION (10-1/2" MAX) SPECIFY (-10)

■ RECOMMEND FEET BE SECURED TO FLOOR WITH 1/2" BOLTS AND ANCHORS (BY OTHERS).

⊗ FOR SIPHON JET ROUGHING OVER 6" OR BLOWOUT ROUGHING OVER 12-1/2" SPECIFY ON ORDER.

SIPHON JET DIMS SHOWN. FOR BLOWOUT DIMS, USE:

- MIN 2" & MAX 4"
- ⊗ MIN 11" & MAX 16-1/2"

- PF PYLON FOOT, STD.
- OR O-RING CARRIER
- SD SPECIAL-DUTY 500 LB. CARRIER
- HS HUB & SPIGOT
- AUX AUXILIARY INLET, 2"
- VP VANDAL-PROOF TRIM
- 1 POSITIONING FRAME
- 6 SUPPLY PIPE SUPPORT (SPECIFY TYPE OF PIPE)

- 10 ABS EXTENSION THROUGH 10-1/2" WALL
- 24 FLOOR MOUNTED BACK OUTLET CHINA BOWL
- 30 CAST IRON ADJ. EXTENSION W/ CONNECTOR
- 30-2 CAST IRON ADJ. EXTENSION W/ CONNECTOR & TEST CAP
- 32 CARRIER FOR WIDE CHASE INSTALLATIONS
- 35 CARRIER FOR WHEELCHAIR HIGH ROUGH
- 58 HORIZONTAL HUB AND SPIGOT LONG BARREL

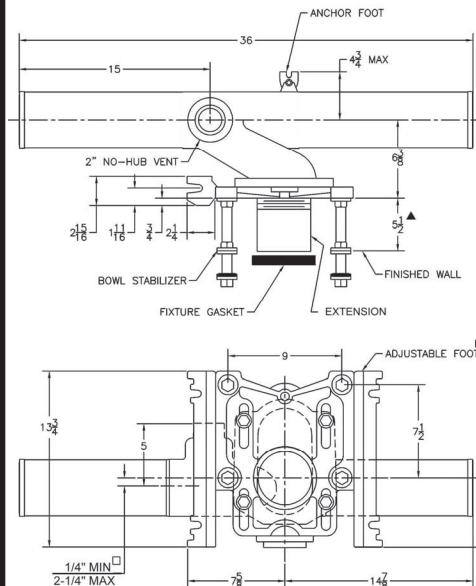
SPECIFICATION:

JOSAM 12684-58 SERIES COATED CAST IRON LONG BARREL RIGHT-HAND HORIZONTAL 4" NO-HUB FITTING WITH 2" NO-HUB VENT AND ADJUSTABLE CARRIER BODY, ABS EXTENSION WITH INTEGRAL TEST CAP, PYLON FEET, ANCHOR FOOT, PLATED HARDWARE AND NEOPRENE FIXTURE GASKET, INVERTIBLE FOR SIPHON JET OR BLOWOUT CLOSETS.

**CLOSET CARRIER
RIGHT HAND**

12684-58

SERIES



▲ FOR DIMENSION SHORTER THAN 5-1/2" (1" MIN) CUT EXTENSION. FOR LONGER EXTENSION (10-1/2" MAX) SPECIFY (-10)

■ RECOMMEND FEET BE SECURED TO FLOOR WITH 1/2" BOLTS AND ANCHORS (BY OTHERS).

⊗ FOR SIPHON JET ROUGHING OVER 6" OR BLOWOUT ROUGHING OVER 12-1/2" SPECIFY ON ORDER.

SIPHON JET DIMS SHOWN. FOR BLOWOUT DIMS, USE:

- MIN 2" & MAX 4"
- ⊗ MIN 11" & MAX 16-1/2"

- PF PYLON FOOT, STD.
- OR O-RING CARRIER
- SD SPECIAL-DUTY 500 LB. CARRIER
- HS HUB & SPIGOT
- AUX AUXILIARY INLET, 2"
- VP VANDAL-PROOF TRIM
- 1 POSITIONING FRAME
- 6 SUPPLY PIPE SUPPORT (SPECIFY TYPE OF PIPE)

- 10 ABS EXTENSION THROUGH 10-1/2" WALL
- 24 FLOOR MOUNTED BACK OUTLET CHINA BOWL
- 30 CAST IRON ADJ. EXTENSION W/ CONNECTOR
- 30-2 CAST IRON ADJ. EXTENSION W/ CONNECTOR & TEST CAP
- 32 CARRIER FOR WIDE CHASE INSTALLATIONS
- 35 CARRIER FOR WHEELCHAIR HIGH ROUGH
- 58 HORIZONTAL NO-HUB CAST LONG BARREL

DRAWING No. 05/10/08

A-12623R-K

JOSAM COMPANY
MICHIGAN CITY, INDIANA

NOTES:

DRAWING No. 05/10/08

A-15151R-K

JOSAM COMPANY
MICHIGAN CITY, INDIANA

NOTES:

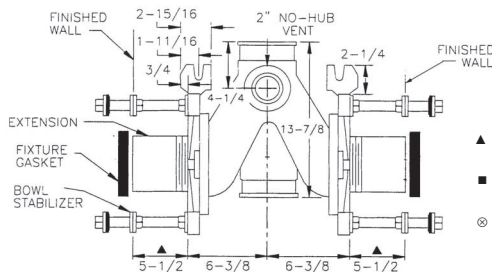
SPECIFICATION:

JOSAM 12694 SERIES COATED CAST IRON DOUBLE HORIZONTAL 4" NO-HUB FITTING WITH 2" NO-HUB VENT AND ADJUSTABLE CARRIER BODY, ABS EXTENSION WITH INTEGRAL TEST CAP, PYLON FEET, ANCHOR FOOT, PLATED HARDWARE AND NEOPRENE FIXTURE GASKET, INVERTIBLE FOR SIPHON JET OR BLOWOUT CLOSETS.

CLOSET CARRIER BACK-TO-BACK

SERIES

12694



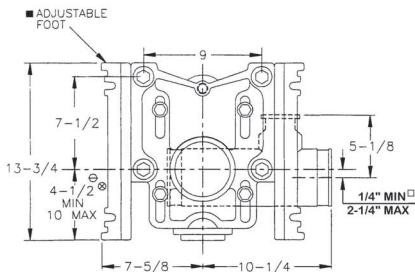
- ▲ FOR DIMENSION SHORTER THAN 5-1/2" (1" MIN) CUT EXTENSION. FOR LONGER EXTENSION (10-1/2" MAX) SPECIFY (-10)
- RECOMMEND FEET BE SECURED TO FLOOR WITH 1/2" BOLTS AND ANCHORS (BY OTHERS).

⊗ FOR SIPHON JET ROUGHING OVER 6" OR BLOWOUT ROUGHING OVER 12-1/2" SPECIFY ON ORDER.

SIPHON JET DIMS SHOWN.
FOR BLOWOUT DIMS, USE:

- MIN 2" & MAX 4"
- ⊖ MIN 11" & MAX 16-1/2"

◆ AUX. INLET IS 6" OFFSET FROM VENT



- PF PYLON FOOT, STD.
- OR O-RING CARRIER
- SD SPECIAL-DUTY 500 LB. CARRIER
- HS HUB & SPIGOT
- ▲ AUX. AUXILIARY INLET (2" NO-HUB)
- ◆ HUB AUX. AUXILIARY INLET (2" HUB)
- VP VANDAL-PROOF TRIM
- 1 POSITIONING FRAME

- 6 SUPPLY PIPE SUPPORT (SPECIFY TYPE OF PIPE)
- 10 ABS EXTENSION THROUGH 10-1/2" WALL
- 24 FLOOR MOUNTED BACK OUTLET CHINA BOWL
- 30 CAST IRON ADJ. EXTENSION W/ CONNECTOR
- 30-2 CAST IRON ADJ. EXTENSION W/ CONNECTOR & TEST CAP
- 32 CARRIER FOR WIDE CHASE INSTALLATIONS
- 35 CARRIER FOR WHEELCHAIR HIGH ROUGH
- 58 HORIZONTAL NO-HUB CAST LONG BARREL

▼ SEPARATE SUBMITTAL FOR THIS OPTION AVAILABLE

DRAWING No. 05/10/08

JOSAM COMPANY
MICHIGAN CITY, INDIANA

A-14575-K

NOTES:

SPECIFICATION:

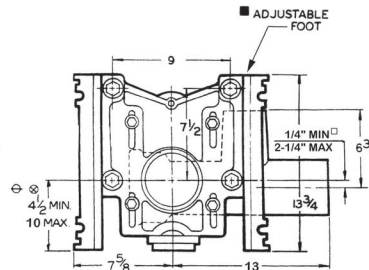
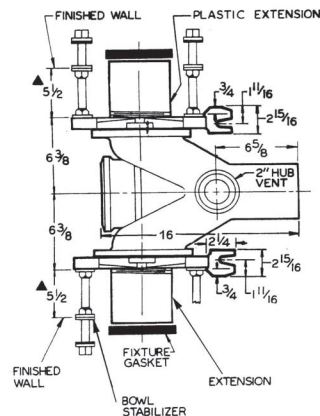
JOSAM 12694-HS SERIES COATED CAST IRON DOUBLE HORIZONTAL 4" HUB & SPIGOT FITTING WITH 2" HUB & SPIGOT VENT AND ADJUSTABLE CARRIER BODY, ABS EXTENSION WITH INTEGRAL TEST CAP, PYLON FEET, ANCHOR FOOT, PLATED HARDWARE AND NEOPRENE FIXTURE GASKET, INVERTIBLE FOR SIPHON JET OR BLOWOUT CLOSETS.

CLOSET CARRIER BACK-TO-BACK

SERIES

12694-HS

FORMERLY 12044 SERIES



- ▲ FOR DIMENSION SHORTER THAN 5-1/2" (1" MIN) CUT EXTENSION. FOR LONGER EXTENSION (10-1/2" MAX) SPECIFY (-10)
- RECOMMEND FEET BE SECURED TO FLOOR WITH 1/2" BOLTS AND ANCHORS (BY OTHERS).

⊗ FOR SIPHON JET ROUGHING OVER 6" OR BLOWOUT ROUGHING OVER 12-1/2" SPECIFY ON ORDER.

SIPHON JET DIMS SHOWN.
FOR BLOWOUT DIMS, USE:

- MIN 2" & MAX 4"
- ⊖ MIN 11" & MAX 16-1/2"

- PF PYLON FOOT, STD.
- OR O-RING CARRIER
- SD SPECIAL-DUTY 500 LB. CARRIER
- HS HUB & SPIGOT
- ▲ AUX. AUXILIARY INLET, 2"
- VP VANDAL-PROOF TRIM
- 1 POSITIONING FRAME
- 6 SUPPLY PIPE SUPPORT (SPECIFY TYPE OF PIPE)

- 10 ABS EXTENSION THROUGH 10-1/2" WALL
- 24 FLOOR MOUNTED BACK OUTLET CHINA BOWL
- 30 CAST IRON ADJ. EXTENSION W/ CONNECTOR
- 30-2 CAST IRON ADJ. EXTENSION W/ CONNECTOR & TEST CAP
- 32 CARRIER FOR WIDE CHASE INSTALLATIONS
- 35 CARRIER FOR WHEELCHAIR HIGH ROUGH
- 58 HORIZONTAL HUB AND SPIGOT LONG BARREL

DRAWING No. 05/10/08

JOSAM COMPANY
MICHIGAN CITY, INDIANA

A-12619-K

NOTES:

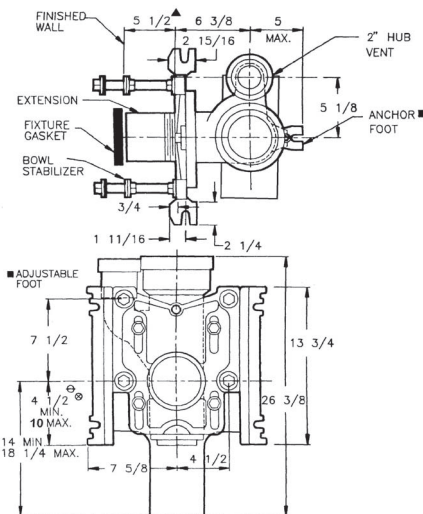
⚠ WARNING: Cancer and Reproductive Harm - www.p65warnings.ca.gov

SPECIFICATION:

JOSAM 12704-HS SERIES COATED CAST IRON SINGLE VERTICAL 4" HUB & SPIGOT FITTING WITH 2" HUB & SPIGOT LEFT-HAND OFFSET VENT. ADJUSTABLE CARRIER BODY. INVERTIBLE FOR SIPHON JET OR BLOWOUT CLOSETS, WITH ABS EXTENSION WITH INTEGRAL TEST CAP, PYLON FEET, ANCHOR FOOT, PLATED HARDWARE AND NEOPRENE FIXTURE GASKET.

CLOSET CARRIER
VERTICAL W/ LEFT HAND VENT
SERIES
12704-HS

FORMERLY 12114A SERIES



- ▲ FOR DIMENSION SHORTER THAN 5-1/2" (1" MIN) CUT EXTENSION. FOR LONGER EXTENSION (10-12" MAX) SPECIFY (-10)

- RECOMMEND FEET BE SECURED TO FLOOR WITH 1/2" BOLTS AND ANCHORS (BY OTHERS).

- ⊗ FOR SIPHON JET ROUGHING OVER 6" OR BLOWOUT ROUGHING OVER 12-12" SPECIFY ON ORDER.

SIPHON JET DIMS SHOWN.
FOR BLOWOUT DIMS, USE:

⊖ MIN 11 & MAX 16-1/2"

PF	PYLON FOOT, STD.
OR	O-RING CARRIER
SD	SPECIAL-DUTY 500 LB. CARRIER
HS	HUB & SPIGOT
LH4	LEFT-HAND 4" NO-HUB BRANCH
LH4H	LEFT-HAND 4" HUB BRANCH
RH4	RIGHT-HAND 4" NO-HUB BRANCH
RH4H	RIGHT-HAND 4" HUB BRANCH
D4	DOUBLE 4" NO-HUB BRANCHES
HD4	DOUBLE 4" HUB BRANCHES
VP	VANDAL-PROOF TRIM

-1	POSITIONING FRAME
-6	SUPPLY PIPE SUPPORT (SPECIFY TYPE OF PIPE)
-10	ABS EXTENSION THROUGH 10-12" WALL
-24	FLOOR MOUNTED BACK OUTLET CHINA BOWL
-30	CAST IRON ADJ. EXTENSION W/ CONNECTOR
-30-2	CAST IRON ADJ. EXTENSION W/ CONNECTOR & TEST CAP
-32	CARRIER FOR WIDE CHASE INSTALLATIONS
-35	CARRIER FOR WHEELCHAIR HIGH ROUGH
-49	NO-HUB AUXILIARY INLET, UNDER VENT
-50	NO-HUB AUXILIARY INLET, OPPOSITE VENT
-53	THREADED AUXILIARY INLET, UNDER VENT
-54	THREADED AUXILIARY INLET, OPPOSITE VENT

▼ SEPARATE SUBMITTAL FOR THIS OPTION AVAILABLE

JOSAM COMPANY
 MICHIGAN CITY, INDIANA

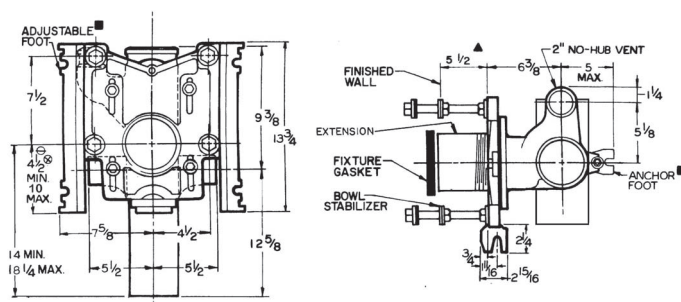
NOTES:

SPECIFICATION:

JOSAM 12704-LH4 SERIES COATED CAST IRON SINGLE VERTICAL 4" NO-HUB FITTING WITH LEFT-HAND 4" NO-HUB BRANCH INLET AND 2" NO-HUB LEFT-HAND OFFSET VENT. ADJUSTABLE CARRIER BODY, INVERTIBLE FOR SIPHON JET OR BLOWOUT CLOSETS, WITH ABS EXTENSION WITH INTEGRAL TEST CAP, PYLON FEET, ANCHOR FOOT, PLATED HARDWARE AND NEOPRENE FIXTURE GASKET.

CLOSET CARRIER
VERTICAL W/ LEFT HAND VENT
SERIES
12704-LH4

FORMERLY 12734 SERIES



- ▲ FOR DIMENSION SHORTER THAN 5-1/2" (1" MIN) CUT EXTENSION. FOR LONGER EXTENSION (10-12" MAX) SPECIFY (-10)

- RECOMMEND FEET BE SECURED TO FLOOR WITH 1/2" BOLTS AND ANCHORS (BY OTHERS).

- ⊗ FOR SIPHON JET ROUGHING OVER 6" OR BLOWOUT ROUGHING OVER 12-12" SPECIFY ON ORDER.

SIPHON JET DIMS SHOWN.
FOR BLOWOUT DIMS, USE:

⊖ MIN 11 & MAX 16-1/2"

PF	PYLON FOOT, STD.
OR	O-RING CARRIER
SD	SPECIAL-DUTY 500 LB. CARRIER
HS	HUB & SPIGOT
LH4	LEFT-HAND 4" NO-HUB BRANCH
RH4H	RIGHT-HAND 4" HUB BRANCH
VP	VANDAL-PROOF TRIM
-1	POSITIONING FRAME
-6	SUPPLY PIPE SUPPORT (SPECIFY TYPE OF PIPE)

-10	ABS EXTENSION THROUGH 10-12" WALL
-24	FLOOR MOUNTED BACK OUTLET CHINA BOWL
-30	CAST IRON ADJ. EXTENSION W/ CONNECTOR
-30-2	CAST IRON ADJ. EXTENSION W/ CONNECTOR & TEST CAP
-32	CARRIER FOR WIDE CHASE INSTALLATIONS
-35	CARRIER FOR WHEELCHAIR HIGH ROUGH
-50	NO-HUB AUXILIARY INLET, OPPOSITE VENT
-54	THREADED AUXILIARY INLET, OPPOSITE VENT

DRAWING No. 05/10/08

A-13700-K

JOSAM COMPANY
 MICHIGAN CITY, INDIANA

NOTES:


WARNING: Cancer and Reproductive Harm - www.p65warnings.ca.gov

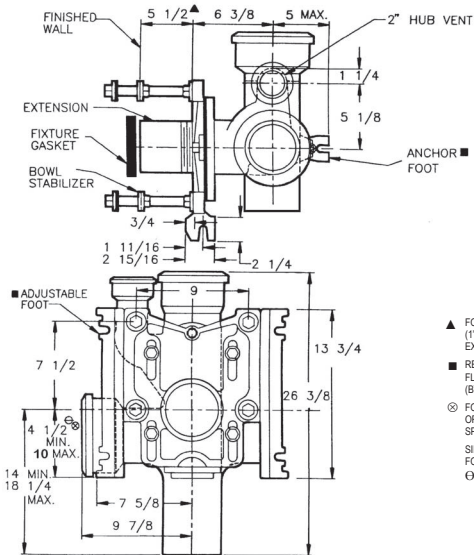
SPECIFICATION:

JOSAM 12704-HS-HLH4 SERIES COATED CAST IRON SINGLE VERTICAL 4" HUB & SPIGOT FITTING WITH LEFT-HAND 4" HUB & SPIGOT BRANCH INLET AND 2" HUB & SPIGOT LEFT-HAND OFFSET VENT. ADJUSTABLE CARRIER BODY, INVERTIBLE FOR SIPHON JET OR BLOWOUT CLOSETS, WITH ABS EXTENSION WITH INTEGRAL TEST CAP, PYLON FEET, ANCHOR FOOT, PLATED HARDWARE AND NEOPRENE FIXTURE GASKET.

**CLOSET CARRIER
VERTICAL W/ LEFT HAND VENT**

SERIES 12704-HS-HLH4

FORMERLY 12174A SERIES



PF	PYLON FOOT, STD.
OR	O-RING CARRIER
SD	SPECIAL-DUTY 500 LB. CARRIER
HS	HUB & SPIGOT
RH4	RIGHT-HAND 4" NO-HUB BRANCH
HLH4	LEFT-HAND 4" HUB BRANCH
VP	VANDAL-PROOF TRIM
-1	POSITIONING FRAME
-6	SUPPLY PIPE SUPPORT (SPECIFY TYPE OF PIPE)

-10	ABS EXTENSION THROUGH 10-1/2" WALL
-24	FLOOR MOUNTED BACK OUTLET CHINA BOWL
-30	CAST IRON ADJ. EXTENSION W/ CONNECTOR
-30-2	CAST IRON ADJ. EXTENSION W/ CONNECTOR & TEST CAP
-32	CARRIER FOR WIDE CHASE INSTALLATIONS
-35	CARRIER FOR WHEELCHAIR HIGH ROUGH
-50	NO-HUB AUXILIARY INLET, OPPOSITE VENT
-54	THREADED AUXILIARY INLET, OPPOSITE VENT

▲ FOR DIMENSION SHORTER THAN 5-1/2" (1" MIN) CUT EXTENSION. FOR LONGER EXTENSION (10-1/2" MAX) SPECIFY (-10)

■ RECOMMEND FEET BE SECURED TO FLOOR WITH 1/2" BOLTS AND ANCHORS (BY OTHERS).

⊗ FOR SIPHON JET ROUGHING OVER 6" OR BLOWOUT ROUGHING OVER 12-1/2" SPECIFY ON ORDER.

SIPHON JET DIMS SHOWN.
FOR BLOWOUT DIMS, USE:
⊖ MIN 11 & MAX 16-1/2"

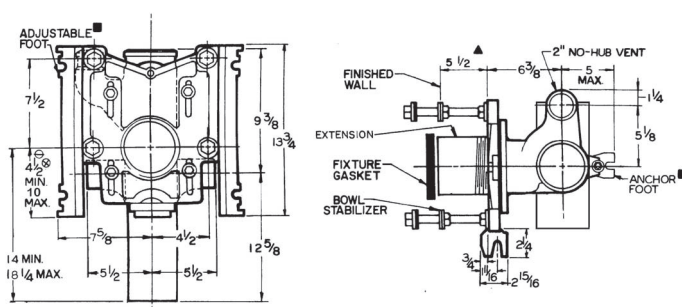
SPECIFICATION:

JOSAM 12704-RH4 SERIES COATED CAST IRON SINGLE VERTICAL 4" NO-HUB FITTING WITH RIGHT-HAND 4" NO-HUB BRANCH INLET AND 2" NO-HUB LEFT-HAND OFFSET VENT. ADJUSTABLE CARRIER BODY, INVERTIBLE FOR SIPHON JET OR BLOWOUT CLOSETS, WITH ABS EXTENSION WITH INTEGRAL TEST CAP, PYLON FEET, ANCHOR FOOT, PLATED HARDWARE AND NEOPRENE FIXTURE GASKET.

**CLOSET CARRIER
VERTICAL W/ LEFT HAND VENT**

SERIES 12704-RH4

FORMERLY 12764 SERIES



PF	PYLON FOOT, STD.
OR	O-RING CARRIER
SD	SPECIAL-DUTY 500 LB. CARRIER
HS	HUB & SPIGOT
HLH4	LEFT-HAND 4" HUB BRANCH
RH4	RIGHT-HAND 4" NO-HUB BRANCH
VP	VANDAL-PROOF TRIM
-1	POSITIONING FRAME
-6	SUPPLY PIPE SUPPORT (SPECIFY TYPE OF PIPE)

-10	ABS EXTENSION THROUGH 10-1/2" WALL
-24	FLOOR MOUNTED BACK OUTLET CHINA BOWL
-30	CAST IRON ADJ. EXTENSION W/ CONNECTOR
-30-2	CAST IRON ADJ. EXTENSION W/ CONNECTOR & TEST CAP
-32	CARRIER FOR WIDE CHASE INSTALLATIONS
-35	CARRIER FOR WHEELCHAIR HIGH ROUGH
-49	NO-HUB AUXILIARY INLET, UNDER VENT
-53	THREADED AUXILIARY INLET, UNDER VENT

▲ FOR DIMENSION SHORTER THAN 5-1/2" (1" MIN) CUT EXTENSION. FOR LONGER EXTENSION (10-1/2" MAX) SPECIFY (-10)

■ RECOMMEND FEET BE SECURED TO FLOOR WITH 1/2" BOLTS AND ANCHORS (BY OTHERS).

⊗ FOR SIPHON JET ROUGHING OVER 6" OR BLOWOUT ROUGHING OVER 12-1/2" SPECIFY ON ORDER.

SIPHON JET DIMS SHOWN.
FOR BLOWOUT DIMS, USE:
⊖ MIN 11 & MAX 16-1/2"

DRAWING No. 05/10/08

A-14678-K

JOSAM COMPANY
MICHIGAN CITY, INDIANA

NOTES:

DRAWING No. 05/10/08

A-13748-K

JOSAM COMPANY
MICHIGAN CITY, INDIANA

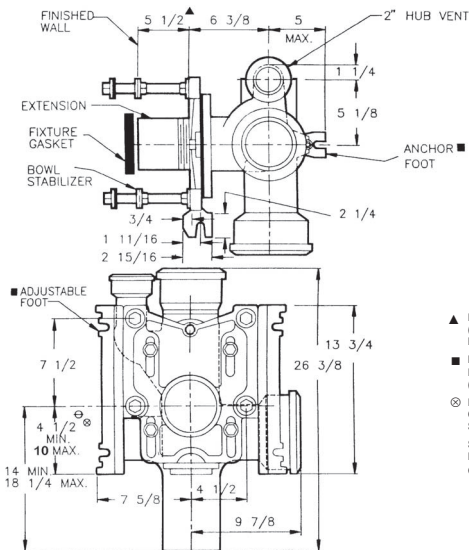
NOTES:

SPECIFICATION:

JOSAM 12704-HS-HRH4 SERIES COATED CAST IRON SINGLE VERTICAL 4" HUB & SPIGOT FITTING WITH RIGHT-HAND 4" HUB & SPIGOT CARRIER INLET AND 2" HUB & SPIGOT LEFT-HAND OFFSET VENT. ADJUSTABLE CARRIER BODY, INVERTIBLE FOR SIPHON JET OR BLOWOUT CLOSETS, WITH ABS EXTENSION WITH INTEGRAL TEST CAP, PYLON FEET, ANCHOR FOOT, PLATED HARDWARE AND NEOPRENE FIXTURE GASKET.

SERIES**12704-HS-HRH4**

FORMERLY 12234A SERIES



▲ FOR DIMENSION SHORTER THAN 5-1/2" (1" MIN) CUT EXTENSION. FOR LONGER EXTENSION (10-12" MAX) SPECIFY (-10)

■ RECOMMEND FEET BE SECURED TO FLOOR WITH 1/2" BOLTS AND ANCHORS (BY OTHERS).

◎ FOR SIPHON JET ROUGHING OVER 6" OR BLOWOUT ROUGHING OVER 12-1/2" SPECIFY ON ORDER.

SIPHON JET DIMS SHOWN.
FOR BLOWOUT DIMS, USE:
⊖ MIN 11 & MAX 16-1/2"

- PF PYLON FOOT, STD.
- OR O-RING CARRIER
- SD SPECIAL-DUTY 500 LB. CARRIER
- HS HUB & SPIGOT
- LH4 LEFT-HAND 4" NO-HUB BRANCH
- HRH4 RIGHT-HAND 4" HUB BRANCH
- VP VANDAL-PROOF TRIM
- 1 POSITIONING FRAME
- 6 SUPPLY PIPE SUPPORT (SPECIFY TYPE OF PIPE)

- 10 ABS EXTENSION THROUGH 10-1/2" WALL
- 24 FLOOR MOUNTED BACK OUTLET CHINA BOWL
- 34 CAST IRON ADJ. EXTENSION W/ CONNECTOR
- 30-2 CAST IRON ADJ. EXTENSION W/ CONNECTOR & TEST CAP
- 32 CARRIER FOR WIDE CHASE INSTALLATIONS
- 35 CARRIER FOR WHEELCHAIR HIGH ROUGH
- 49 NO-HUB AUXILIARY INLET, UNDER VENT
- 53 THREADED AUXILIARY INLET, UNDER VENT

DRAWING No. 05/10/08

JOSAM COMPANY
MICHIGAN CITY, INDIANA

NOTES:

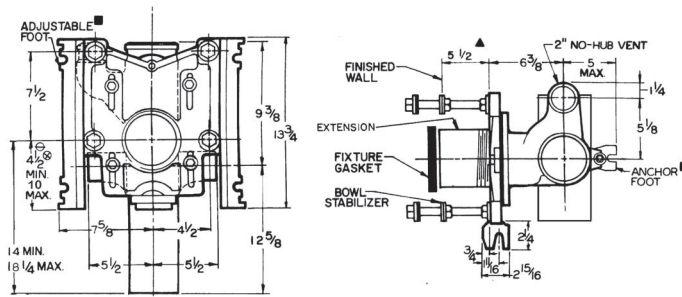
A-14681-K

SPECIFICATION:

JOSAM 12704-D4 SERIES COATED CAST IRON SINGLE VERTICAL 4" NO-HUB FITTING WITH TWO 4" NO-HUB BRANCH INLETS AND 2" NO-HUB LEFT-HAND OFFSET VENT. ADJUSTABLE CARRIER BODY, INVERTIBLE FOR SIPHON JET OR BLOWOUT CLOSETS, WITH ABS EXTENSION WITH INTEGRAL TEST CAP, PYLON FEET, ANCHOR FOOT, PLATED HARDWARE AND NEOPRENE FIXTURE GASKET.

SERIES**12704-D4**

FORMERLY 12794 SERIES



▲ FOR DIMENSION SHORTER THAN 5-1/2" (1" MIN) CUT EXTENSION. FOR LONGER EXTENSION (10-12" MAX) SPECIFY (-10)

■ RECOMMEND FEET BE SECURED TO FLOOR WITH 1/2" BOLTS AND ANCHORS (BY OTHERS).

◎ FOR SIPHON JET ROUGHING OVER 6" OR BLOWOUT ROUGHING OVER 12-1/2" SPECIFY ON ORDER.

SIPHON JET DIMS SHOWN.
FOR BLOWOUT DIMS, USE:
⊖ MIN 11 & MAX 16-1/2"

- PF PYLON FOOT, STD.
- OR O-RING CARRIER
- SD SPECIAL-DUTY 500 LB. CARRIER
- HS HUB & SPIGOT
- D4 DOUBLE 4" NO-HUB BRANCHES
- VP VANDAL-PROOF TRIM
- 1 POSITIONING FRAME

- 6 SUPPLY PIPE SUPPORT (SPECIFY TYPE OF PIPE)
- 10 ABS EXTENSION THROUGH 10-1/2" WALL
- 24 FLOOR MOUNTED BACK OUTLET CHINA BOWL
- 30 CAST IRON ADJ. EXTENSION W/ CONNECTOR
- 30-2 CAST IRON ADJ. EXTENSION W/ CONNECTOR & TEST CAP
- 32 CARRIER FOR WIDE CHASE INSTALLATIONS
- 35 CARRIER FOR WHEELCHAIR HIGH ROUGH

DRAWING No. 05/10/08

JOSAM COMPANY
MICHIGAN CITY, INDIANA

NOTES:

A-13755-K

⚠ WARNING: Cancer and Reproductive Harm - www.p65warnings.ca.gov

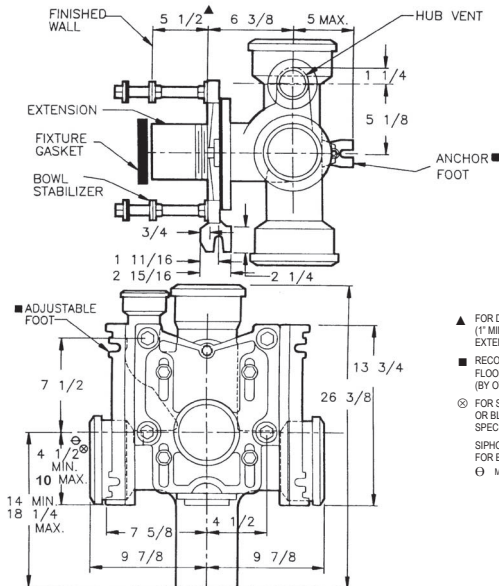
SPECIFICATION:

JOSAM 12704-HS-HD4 SERIES COATED CAST IRON SINGLE VERTICAL 4" HUB & SPIGOT FITTING DOUBLE 4" HUB & SPIGOT BRANCH INLETS AND 2" HUB & SPIGOT LEFT-HAND OFFSET VENT. ADJUSTABLE CARRIER BODY. INVERTIBLE FOR SIPHON JET OR BLOWOUT CLOSETS, WITH ABS EXTENSION WITH INTEGRAL TEST CAP, PYLON FEET, ANCHOR FOOT, PLATED HARDWARE AND NEOPRENE FIXTURE GASKET.

**CLOSET CARRIER
VERTICAL W/ LEFT HAND VENT**

SERIES 12704-HS-HD4

FORMERLY 12274A SERIES



▲ FOR DIMENSION SHORTER THAN 5-1/2" (1" MIN) CUT EXTENSION. FOR LONGER EXTENSION (10-1/2" MAX) SPECIFY (-10)

■ RECOMMEND FEET BE SECURED TO FLOOR WITH 1/2" BOLTS AND ANCHORS (BY OTHERS).

⊗ FOR SIPHON JET ROUGHING OVER 6" OR BLOWOUT ROUGHING OVER 12-1/2" SPECIFY ON ORDER.

SIPHON JET DIMS SHOWN FOR BLOWOUT DIMS, USE:

⊖ MIN 11 & MAX 16-1/2"

- PF PYLON FOOT, STD.
- OR O-RING CARRIER
- SD SPECIAL-DUTY 500 LB. CARRIER
- HS HUB & SPIGOT
- HD4 DOUBLE 4" HUB BRANCHES
- VP VANDAL-PROOF TRIM
- 1 POSITIONING FRAME

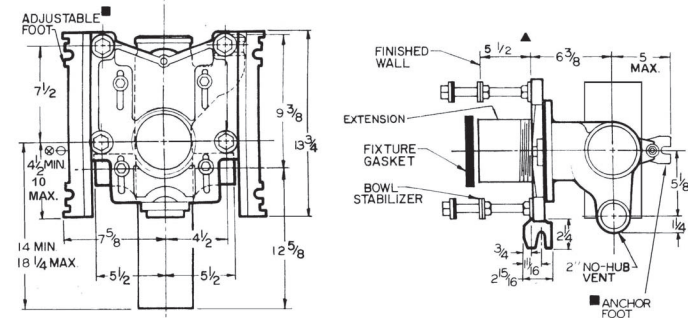
- 6 SUPPLY PIPE SUPPORT (SPECIFY TYPE OF PIPE)
- 10 ABS EXTENSION THROUGH 10-1/2" WALL
- 24 FLOOR MOUNTED BACK OUTLET CHINA BOWL
- 30 CAST IRON ADJ. EXTENSION W/ CONNECTOR
- 30-2 CAST IRON ADJ. EXTENSION W/ CONNECTOR & TEST CAP
- 32 CARRIER FOR WIDE CHASE INSTALLATIONS
- 35 CARRIER FOR WHEELCHAIR HIGH ROUGH

SPECIFICATION:

JOSAM 12714 SERIES COATED CAST IRON SINGLE VERTICAL 4" NO-HUB FITTING WITH 2" NO-HUB RIGHT-HAND OFFSET VENT. ADJUSTABLE CARRIER BODY, INVERTIBLE FOR SIPHON JET OR BLOWOUT CLOSETS, WITH ABS EXTENSION WITH INTEGRAL TEST CAP, PYLON FEET, ANCHOR FOOT, PLATED HARDWARE AND NEOPRENE FIXTURE GASKET.

**CLOSET CARRIER
VERTICAL W/ RIGHT HAND VENT**

SERIES 12714



▲ FOR DIMENSION SHORTER THAN 5-1/2" (1" MIN) CUT EXTENSION. FOR LONGER EXTENSION (10-1/2" MAX) SPECIFY (-10)

■ RECOMMEND FEET BE SECURED TO FLOOR WITH 1/2" BOLTS AND ANCHORS (BY OTHERS).

⊗ FOR SIPHON JET ROUGHING OVER 6" OR BLOWOUT ROUGHING OVER 12-1/2" SPECIFY ON ORDER.

SIPHON JET DIMS SHOWN FOR BLOWOUT DIMS, USE:

⊖ MIN 11 & MAX 16-1/2"

- PF PYLON FOOT, STD.
- OR O-RING CARRIER
- SD SPECIAL-DUTY 500 LB. CARRIER
- HS HUB & SPIGOT
- LH4 LEFT-HAND 4" NO-HUB BRANCH
- HLH4 LEFT-HAND 4" HUB BRANCH
- RH4 RIGHT-HAND 4" NO-HUB BRANCH
- HRH4 RIGHT-HAND 4" HUB BRANCH
- D4 DOUBLE 4" NO-HUB BRANCHES
- HD4 DOUBLE 4" HUB BRANCHES
- VP VANDAL-PROOF TRIM

- 1 POSITIONING FRAME
- 6 SUPPLY PIPE SUPPORT (SPECIFY TYPE OF PIPE)
- 10 ABS EXTENSION THROUGH 10-1/2" WALL
- 24 FLOOR MOUNTED BACK OUTLET CHINA BOWL
- 30 CAST IRON ADJ. EXTENSION W/ CONNECTOR
- 30-2 CAST IRON ADJ. EXTENSION W/ CONNECTOR & TEST CAP
- 32 CARRIER FOR WIDE CHASE INSTALLATIONS
- 35 CARRIER FOR WHEELCHAIR HIGH ROUGH
- 49 NO-HUB AUXILIARY INLET, UNDER VENT
- 50 NO-HUB AUXILIARY INLET, OPPOSITE VENT
- 53 THREADED AUXILIARY INLET, UNDER VENT
- 54 THREADED AUXILIARY INLET, OPPOSITE VENT

▼ SEPARATE SUBMITTAL FOR THIS OPTION AVAILABLE

DRAWING No. 05/10/08

JOSAM COMPANY
MICHIGAN CITY, INDIANA

NOTES:

A-14683-K

DRAWING No. 05/10/08

JOSAM COMPANY
MICHIGAN CITY, INDIANA

NOTES:

A-13397-K

SPECIFICATION:

JOSAM 12714-HS SERIES COATED CAST IRON SINGLE VERTICAL 4" HUB & SPIGOT FITTING WITH 2" HUB & SPIGOT RIGHT-HAND OFFSET VENT. ADJUSTABLE CARRIER BODY. INVERTIBLE FOR SIPHON JET OR BLOWOUT CLOSETS, WITH ABS EXTENSION WITH INTEGRAL TEST CAP, PYLON FEET, ANCHOR FOOT, PLATED HARDWARE AND NEOPRENE FIXTURE GASKET.

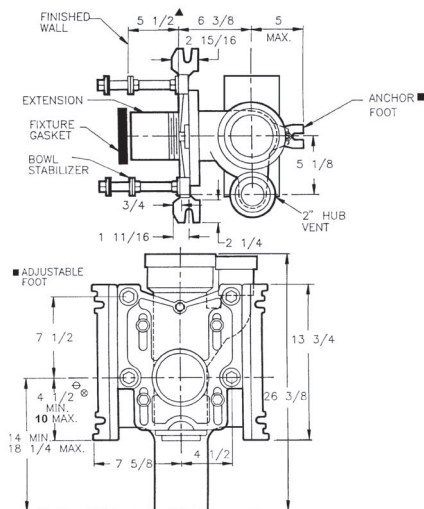
CLOSET CARRIER

VERTICAL W/ RIGHT HAND VENT

SERIES

12714-HS

FORMERLY 12134A SERIES



- ▲ FOR DIMENSION SHORTER THAN 5-1/2" (1" MIN) CUT EXTENSION. FOR LONGER EXTENSION (10-12" MAX) SPECIFY (-10)

- RECOMMEND FEET BE SECURED TO FLOOR WITH 1/2" BOLTS AND ANCHORS (BY OTHERS).

- ⊗ FOR SIPHON JET ROUGHING OVER 6" OR BLOWOUT ROUGHING OVER 12-12" SPECIFY ON ORDER.

SIPHON JET DIMS SHOWN.
FOR BLOWOUT DIMS, USE:

⊗ MIN 11 & MAX 16-1/2"

PF	PYLON FOOT, STD.
OR	O-RING CARRIER
SD	SPECIAL-DUTY 500 LB. CARRIER
HS	HUB & SPIGOT
HLH	LEFT-HAND 4" NO-HUB BRANCH
RH4	RIGHT-HAND 4" NO-HUB BRANCH
HRH4	RIGHT-HAND 4" HUB BRANCH
D4	DOUBLE 4" NO-HUB BRANCHES
HD4	DOUBLE 4" HUB BRANCHES
VP	VANDAL-PROOF TRIM

-1	POSITIONING FRAME
-6	SUPPLY PIPE SUPPORT (SPECIFY TYPE OF PIPE)
-10	ABS EXTENSION THROUGH 10-1/2" WALL
-24	FLOOR MOUNTED BACK OUTLET CHINA BOWL
-30	CAST IRON ADJ. EXTENSION W/ CONNECTOR
-30-2	CAST IRON ADJ. EXTENSION W/ CONNECTOR & TEST CAP
-32	CARRIER FOR WIDE CHASE INSTALLATIONS
-35	CARRIER FOR WHEELCHAIR HIGH ROUGH
-49	NO-HUB AUXILIARY INLET, UNDER VENT
-50	NO-HUB AUXILIARY INLET, OPPOSITE VENT
-53	THREADED AUXILIARY INLET, UNDER VENT
-54	THREADED AUXILIARY INLET, OPPOSITE VENT

▼ SEPARATE SUBMITTAL FOR THIS OPTION AVAILABLE

DRAWING No. 05/10/08

A-14676-K

JOSAM COMPANY
MICHIGAN CITY, INDIANA

NOTES:

SPECIFICATION:

JOSAM 12714-RH4 SERIES COATED CAST IRON SINGLE VERTICAL 4" NO-HUB FITTING WITH RIGHT-HAND 4" NO-HUB BRANCH INLET AND 2" NO-HUB RIGHT-HAND OFFSET VENT. ADJUSTABLE CARRIER BODY. INVERTIBLE FOR SIPHON JET OR BLOWOUT CLOSETS, WITH ABS EXTENSION WITH INTEGRAL TEST CAP, PYLON FEET, ANCHOR FOOT, PLATED HARDWARE AND NEOPRENE FIXTURE GASKET.

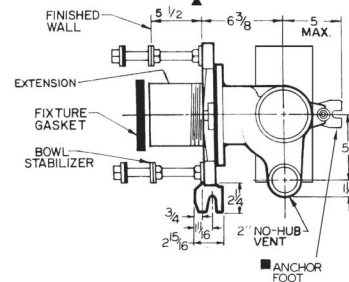
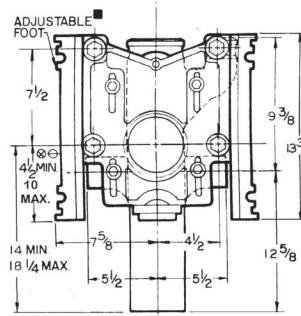
CLOSET CARRIER

VERTICAL W/ RIGHT HAND VENT

SERIES

12714-RH4

FORMERLY 12744 SERIES



- ▲ FOR DIMENSION SHORTER THAN 5-1/2" (1" MIN) CUT EXTENSION. FOR LONGER EXTENSION (10-12" MAX) SPECIFY (-10)

- RECOMMEND FEET BE SECURED TO FLOOR WITH 1/2" BOLTS AND ANCHORS (BY OTHERS).

- ⊗ FOR SIPHON JET ROUGHING OVER 6" OR BLOWOUT ROUGHING OVER 12-12" SPECIFY ON ORDER.

SIPHON JET DIMS SHOWN.
FOR BLOWOUT DIMS, USE:

⊗ MIN 11 & MAX 16-1/2"

PF	PYLON FOOT, STD.
OR	O-RING CARRIER
SD	SPECIAL-DUTY 500 LB. CARRIER
HS	HUB & SPIGOT
HLH4	LEFT-HAND 4" HUB BRANCH
RH4	RIGHT-HAND 4" NO-HUB BRANCH
VP	VANDAL-PROOF TRIM
-1	POSITIONING FRAME
-6	SUPPLY PIPE SUPPORT (SPECIFY TYPE OF PIPE)

-10	ABS EXTENSION THROUGH 10-1/2" WALL
-24	FLOOR MOUNTED BACK OUTLET CHINA BOWL
-30	CAST IRON ADJ. EXTENSION W/ CONNECTOR
-30-2	CAST IRON ADJ. EXTENSION W/ CONNECTOR & TEST CAP
-32	CARRIER FOR WIDE CHASE INSTALLATIONS
-35	CARRIER FOR WHEELCHAIR HIGH ROUGH
-50	NO-HUB AUXILIARY INLET, OPPOSITE VENT
-54	THREADED AUXILIARY INLET, OPPOSITE VENT

DRAWING No. 05/10/08

A-13705-K

JOSAM COMPANY
MICHIGAN CITY, INDIANA

NOTES:

29

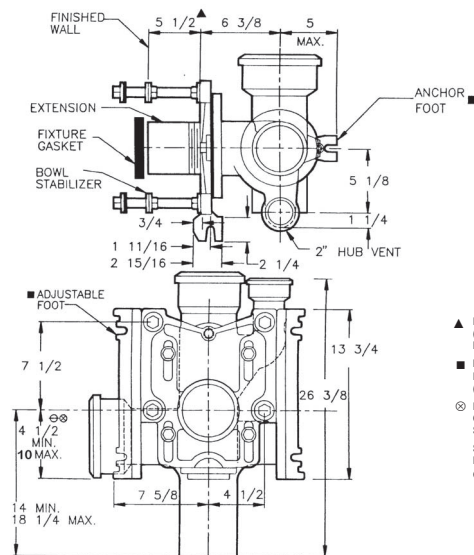
SPECIFICATION:

JOSAM 12714-HS-HLH4 SERIES COATED CAST IRON SINGLE VERTICAL 4" HUB & SPIGOT FITTING WITH LEFT-HAND 4" HUB & SPIGOT RIGHT-HAND OFFSET VENT, ADJUSTABLE CARRIER BODY, INVERTIBLE FOR SIPHON JET OR BLOWOUT CLOSETS, WITH ABS EXTENSION WITH INTEGRAL TEST CAP, PYLON FEET, ANCHOR FOOT, PLATED HARDWARE AND NEOPRENE FIXTURE GASKET.

CLOSET CARRIER VERTICAL W/ RIGHT HAND VENT

SERIES 12714-HS-HLH4

FORMERLY 12254A SERIES



▲ FOR DIMENSION SHORTER THAN 5-1/2" (1" MIN) CUT EXTENSION. FOR LONGER EXTENSION (10-1/2" MAX) SPECIFY (-10)

■ RECOMMEND FEET BE SECURED TO FLOOR WITH 1/2" BOLTS AND ANCHORS (BY OTHERS).

◎ FOR SIPHON JET ROUGHING OVER 6" OR BLOWOUT ROUGHING OVER 12-1/2" SPECIFY ON ORDER.

SIPHON JET DIMS SHOWN.
FOR BLOWOUT DIMS, USE:
⊖ MIN 11 & MAX 16-1/2"

- PF PYLON FOOT, STD.
- OR O-RING CARRIER
- SD SPECIAL-DUTY 500 LB. CARRIER
- HS HUB & SPIGOT
- RH4 RIGHT-HAND 4" NO-HUB BRANCH
- HLH4 LEFT-HAND 4" HUB BRANCH
- VP VANDAL-PROOF TRIM
- 1 POSITIONING FRAME
- 6 SUPPLY PIPE SUPPORT (SPECIFY TYPE OF PIPE)

- 10 ABS EXTENSION THROUGH 10-1/2" WALL
- 24 FLOOR MOUNTED BACK OUTLET CHINA BOWL
- 30 CAST IRON ADJ. EXTENSION W/ CONNECTOR
- 30-2 CAST IRON ADJ. EXTENSION W/ CONNECTOR & TEST CAP
- 32 CARRIER FOR WIDE CHASE INSTALLATIONS
- 35 CARRIER FOR WHEELCHAIR HIGH ROUGH
- 49 NO-HUB AUXILIARY INLET, UNDER VENT
- 53 THREADED AUXILIARY INLET, UNDER VENT

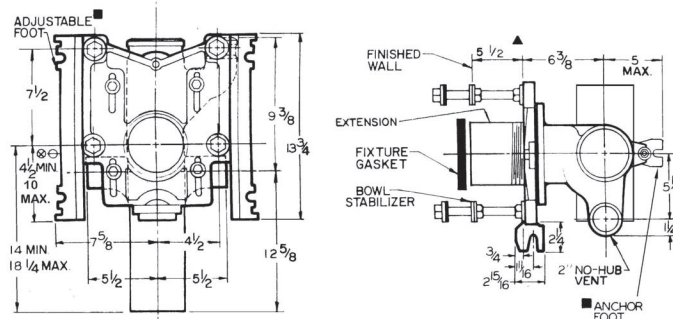
SPECIFICATION:

JOSAM 12714-D4 SERIES COATED CAST IRON SINGLE VERTICAL 4" NO-HUB FITTING WITH TWO 4" NO-HUB BRANCH INLETS AND 2" NO-HUB RIGHT-HAND OFFSET VENT. ADJUSTABLE CARRIER BODY, INVERTIBLE FOR SIPHON JET OR BLOWOUT CLOSETS, WITH ABS EXTENSION WITH INTEGRAL TEST CAP, PYLON FEET, ANCHOR FOOT, PLATED HARDWARE AND NEOPRENE FIXTURE GASKET.

CLOSET CARRIER VERTICAL W/ RIGHT HAND VENT

SERIES 12714-D4

FORMERLY 12804 SERIES



▲ FOR DIMENSION SHORTER THAN 5-1/2" (1" MIN) CUT EXTENSION. FOR LONGER EXTENSION (10-1/2" MAX) SPECIFY (-10)

■ RECOMMEND FEET BE SECURED TO FLOOR WITH 1/2" BOLTS AND ANCHORS (BY OTHERS).

◎ FOR SIPHON JET ROUGHING OVER 6" OR BLOWOUT ROUGHING OVER 12-1/2" SPECIFY ON ORDER.

SIPHON JET DIMS SHOWN.
FOR BLOWOUT DIMS, USE:
⊖ MIN 11 & MAX 16-1/2"

- PF PYLON FOOT, STD.
- OR O-RING CARRIER
- SD SPECIAL-DUTY 500 LB. CARRIER
- HS HUB & SPIGOT
- D4 DOUBLE 4" NO-HUB BRANCHES
- VP VANDAL-PROOF TRIM
- 1 POSITIONING FRAME

- 6 SUPPLY PIPE SUPPORT (SPECIFY TYPE OF PIPE)
- 10 ABS EXTENSION THROUGH 10-1/2" WALL
- 24 FLOOR MOUNTED BACK OUTLET CHINA BOWL
- 30 CAST IRON ADJ. EXTENSION W/ CONNECTOR
- 30-2 CAST IRON ADJ. EXTENSION W/ CONNECTOR & TEST CAP
- 32 CARRIER FOR WIDE CHASE INSTALLATIONS
- 35 CARRIER FOR WHEELCHAIR HIGH ROUGH

DRAWING No. 05/10/08

A-14682-K

JOSAM COMPANY
MICHIGAN CITY, INDIANA

NOTES:

DRAWING No. 05/10/08

A-13754-K

JOSAM COMPANY
MICHIGAN CITY, INDIANA

NOTES:

⚠ WARNING: Cancer and Reproductive Harm - www.p65warnings.ca.gov

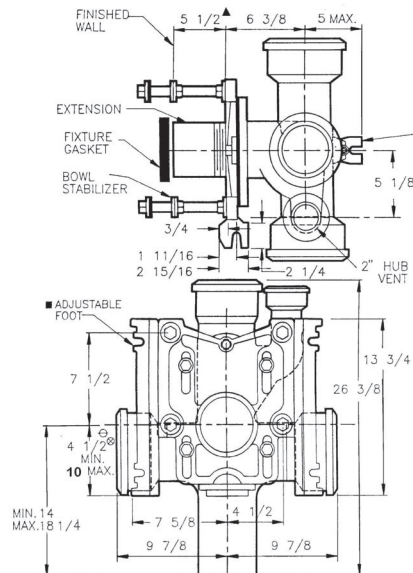
SPECIFICATION:

JOSAM 12714-HS-HD4 SERIES COATED CAST IRON SINGLE VERTICAL 4" HUB & SPIGOT FITTING DOUBLE 4" HUB & SPIGOT BRANCH INLETS AND 2" HUB & SPIGOT RIGHT-HAND OFFSET VENT. ADJUSTABLE CARRIER BODY, INVERTIBLE FOR SIPHON JET OR BLOWOUT CLOSETS, WITH ABS EXTENSION WITH INTEGRAL TEST CAP, PYLON FEET, ANCHOR FOOT, PLATED HARDWARE AND NEOPRENE FIXTURE GASKET.

**CLOSET CARRIER
VERTICAL W/ RIGHT HAND VENT**

SERIES 12714-HS-HD4

FORMERLY 12294A SERIES



▲ FOR DIMENSION SHORTER THAN 5-1/2" (1" MIN) CUT EXTENSION. FOR LONGER EXTENSION (10-12" MAX) SPECIFY (-10)

■ RECOMMEND FEET BE SECURED TO FLOOR WITH 1/2" BOLTS AND ANCHORS (BY OTHERS).

⊗ FOR SIPHON JET ROUGHING OVER 6" OR BLOWOUT ROUGHING OVER 12-1/2" SPECIFY ON ORDER.

SIPHON JET DIMS SHOWN.
FOR BLOWOUT DIMS, USE:

⊖ MIN 11 & MAX 16-1/2"

- PF PYLON FOOT, STD.
- OR O-RING CARRIER
- SD SPECIAL-DUTY 500 LB. CARRIER
- HS HUB & SPIGOT
- HD4 DOUBLE 4" HUB BRANCHES
- D4 VANDAL-PROOF TRIM
- 1 POSITIONING FRAME

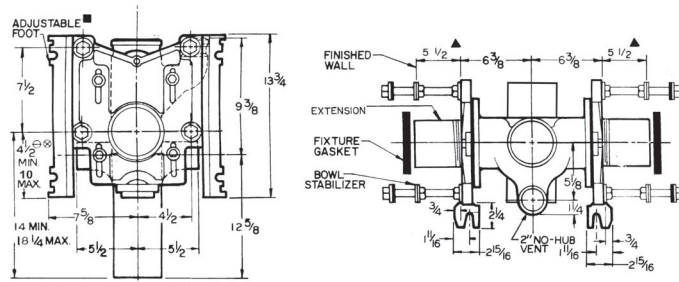
- 6 SUPPLY PIPE SUPPORT (SPECIFY TYPE OF PIPE)
- 10 ABS EXTENSION THROUGH 10-1/2" WALL
- 24 FLOOR MOUNTED BACK OUTLET CHINA BOWL
- 30 CAST IRON ADJ. EXTENSION W/ CONNECTOR
- 30-2 CAST IRON ADJ. EXTENSION W/ CONNECTOR & TEST CAP
- 32 CARRIER FOR WIDE CHASE INSTALLATIONS
- 35 CARRIER FOR WHEELCHAIR HIGH ROUGH

SPECIFICATION:

JOSAM 12724 SERIES COATED CAST IRON DOUBLE VERTICAL 4" NO-HUB ON STACK FITTING WITH 2" NO-HUB OFFSET VENT, ADJUSTABLE CARRIER BODY, INVERTIBLE FOR SIPHON JET OR BLOWOUT CLOSETS, WITH ABS EXTENSION WITH INTEGRAL TEST CAP, PYLON FEET, ANCHOR FOOT, PLATED HARDWARE AND NEOPRENE FIXTURE GASKET.

**CLOSET CARRIER
VERTICAL BACK-TO-BACK**

SERIES 12724



▲ FOR DIMENSION SHORTER THAN 5-1/2" (1" MIN) CUT EXTENSION. FOR LONGER EXTENSION (10-12" MAX) SPECIFY (-10)

■ RECOMMEND FEET BE SECURED TO FLOOR WITH 1/2" BOLTS AND ANCHORS (BY OTHERS).

⊗ FOR SIPHON JET ROUGHING OVER 6" OR BLOWOUT ROUGHING OVER 12-1/2" SPECIFY ON ORDER.

SIPHON JET DIMS SHOWN.
FOR BLOWOUT DIMS, USE:

⊖ MIN 11 & MAX 16-1/2"

- PF PYLON FOOT, STD.
- OR O-RING CARRIER
- SD SPECIAL-DUTY 500 LB. CARRIER
- HS HUB & SPIGOT
- LH4 LEFT-HAND 4" NO-HUB BRANCH
- HLH4 LEFT-HAND 4" HUB BRANCH
- RH4 RIGHT-HAND 4" NO-HUB BRANCH
- HRH4 RIGHT-HAND 4" HUB BRANCH
- D4 DOUBLE 4" NO-HUB BRANCHES
- HD4 DOUBLE 4" HUB BRANCHES
- VP VANDAL-PROOF TRIM

- 1 POSITIONING FRAME
- 6 SUPPLY PIPE SUPPORT (SPECIFY TYPE OF PIPE)
- 10 ABS EXTENSION THROUGH 10-1/2" WALL
- 24 FLOOR MOUNTED BACK OUTLET CHINA BOWL
- 30 CAST IRON ADJ. EXTENSION W/ CONNECTOR
- 30-2 CAST IRON ADJ. EXTENSION W/ CONNECTOR & TEST CAP
- 32 CARRIER FOR WIDE CHASE INSTALLATIONS
- 35 CARRIER FOR WHEELCHAIR HIGH ROUGH
- 49 NO-HUB AUXILIARY INLET, UNDER VENT
- 50 NO-HUB AUXILIARY INLET, OPPOSITE VENT
- 53 THREADED AUXILIARY INLET, UNDER VENT
- 54 THREADED AUXILIARY INLET, OPPOSITE VENT

▼ SEPARATE SUBMITTAL FOR THIS OPTION AVAILABLE

DRAWING No. 05/10/08

JOSAM COMPANY
MICHIGAN CITY, INDIANA

NOTES:

A-14684-K

DRAWING No. 05/10/08

JOSAM COMPANY
MICHIGAN CITY, INDIANA

NOTES:

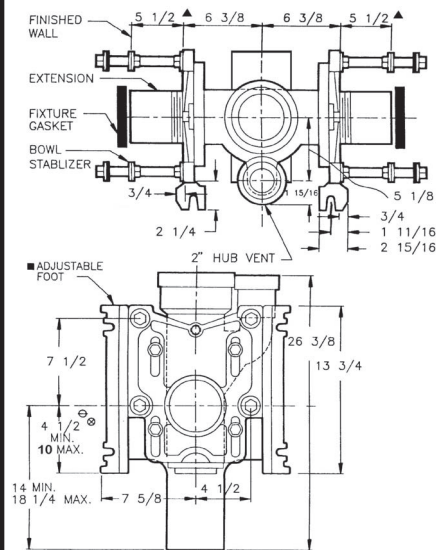
A-13431-K

SPECIFICATION:

JOSAM 12724-HS SERIES COATED CAST IRON DOUBLE VERTICAL 4" HUB & SPIGOT FITTING WITH 2" HUB & SPIGOT OFFSET VENT. ADJUSTABLE CARRIER BODY. INVERTIBLE FOR SIPHON JET OR BLOWOUT CLOSETS; WITH ABS EXTENSION WITH INTEGRAL TEST CAP. PYLON FEET, ANCHOR FOOT, PLATED HARDWARE AND NEOPRENE FIXTURE GASKET.

SERIES**CLOSET CARRIER
VERTICAL BACK-TO-BACK****12724-HS**

FORMERLY 12154A SERIES



▲ FOR DIMENSION SHORTER THAN 5-1/2" (1" MIN) CUT EXTENSION. FOR LONGER EXTENSION (10-1/2" MAX) SPECIFY (-10)

■ RECOMMEND FEET BE SECURED TO FLOOR WITH 1/2" BOLTS AND ANCHORS (BY OTHERS).

⊙ FOR SIPHON JET ROUGHING OVER 6" OR BLOWOUT ROUGHING OVER 12-1/2" SPECIFY ON ORDER.

SIPHON JET DIMS SHOWN.
FOR BLOWOUT DIMS, USE:

⊖ MIN 11" & MAX 16-1/2"

PF	PYLON FOOT, STD.
OR	O-RING CARRIER
SD	SPECIAL-DUTY 500 LB. CARRIER
HS	HUB & SPIGOT
OS4	OPPOSITE VENT 4" NO-HUB BRANCH
VS4	VENT SIDE 4" NO-HUB BRANCH
HVS4	HUB SIDE 4" NO-HUB BRANCH
D4	DOUBLE 4" NO-HUB BRANCHES
HD4	DOUBLE 4" HUB BRANCHES

▼ SEPARATE SUBMITTAL FOR THIS OPTION AVAILABLE

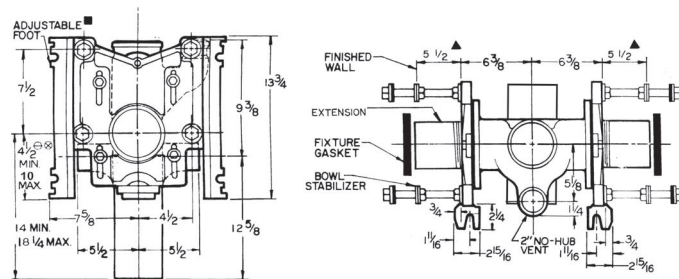
VP	VANDAL-PROOF TRIM
-1	POSITIONING FRAME
-6	SUPPLY PIPE SUPPORT (SPECIFY TYPE OF PIPE)
-10	ABS EXTENSION THROUGH 10-1/2" WALL
-24	FLOOR MOUNTED BACK OUTLET CHINA BOWL
-30	CAST IRON ADJ. EXTENSION W/ CONNECTOR
-30-2	CAST IRON ADJ. EXTENSION W/ CONNECTOR & TEST CAP
-32	CARRIER FOR WIDE CHASE INSTALLATIONS
-35	CARRIER FOR WHEELCHAIR HIGH ROUGH

SPECIFICATION:

JOSAM 12724-VS4 SERIES COATED CAST IRON DOUBLE VERTICAL 4" NO-HUB ON STACK FITTING WITH UNDER VENT SIDE 4" NO-HUB BRANCH INLET AND 2" NO-HUB OFFSET VENT. ADJUSTABLE CARRIER BODY. INVERTIBLE FOR SIPHON JET OR BLOWOUT CLOSETS; WITH ABS EXTENSION WITH INTEGRAL TEST CAP, PYLON FEET, ANCHOR FOOT, PLATED HARDWARE AND NEOPRENE FIXTURE GASKET.

SERIES**CLOSET CARRIER
VERTICAL BACK-TO-BACK****12724-VS4**

FORMERLY 12754 SERIES



▲ FOR DIMENSION SHORTER THAN 5-1/2" (1" MIN) CUT EXTENSION. FOR LONGER EXTENSION (10-1/2" MAX) SPECIFY (-10)

■ RECOMMEND FEET BE SECURED TO FLOOR WITH 1/2" BOLTS AND ANCHORS (BY OTHERS).

⊙ FOR SIPHON JET ROUGHING OVER 6" OR BLOWOUT ROUGHING OVER 12-1/2" SPECIFY ON ORDER.

SIPHON JET DIMS SHOWN.
FOR BLOWOUT DIMS, USE:

⊖ MIN 11" & MAX 16-1/2"

PF	PYLON FOOT, STD.
OR	O-RING CARRIER
SD	SPECIAL-DUTY 500 LB. CARRIER
HS	HUB & SPIGOT
OS4	OPPOSITE VENT 4" HUB BRANCH
VS4	VENT SIDE 4" NO-HUB BRANCH
VP	VANDAL-PROOF TRIM

-1	POSITIONING FRAME
-6	SUPPLY PIPE SUPPORT (SPECIFY TYPE OF PIPE)
-10	ABS EXTENSION THROUGH 10-1/2" WALL
-24	FLOOR MOUNTED BACK OUTLET CHINA BOWL
-30	CAST IRON ADJ. EXTENSION W/ CONNECTOR
-30-2	CAST IRON ADJ. EXTENSION W/ CONNECTOR & TEST CAP
-32	CARRIER FOR WIDE CHASE INSTALLATIONS
-35	CARRIER FOR WHEELCHAIR HIGH ROUGH

DRAWING No. 05/10/08

A-13746-K

JOSAM COMPANY
MICHIGAN CITY, INDIANA

NOTES:

! WARNING: Cancer and Reproductive Harm - www.p65warnings.ca.gov

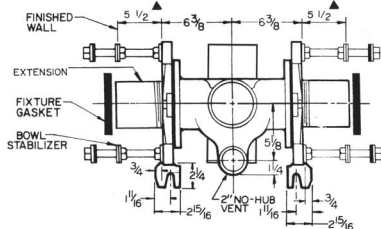
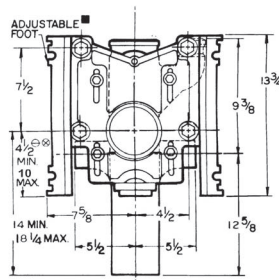
SPECIFICATION:

JOSAM 12724-OS4 SERIES COATED CAST IRON DOUBLE VERTICAL 4" NO-HUB ON STACK FITTING WITH OPPOSITE VENT SIDE 4" NO-HUB BRANCH INLET AND 2" NO-HUB OFFSET VENT. ADJUSTABLE CARRIER BODY, INVERTIBLE FOR SIPHON JET OR BLOWOUT CLOSETS, WITH ABS EXTENSION WITH INTEGRAL TEST CAP, PYLON FEET, ANCHOR FOOT, PLATED HARDWARE AND NEOPRENE FIXTURE GASKET.

**CLOSET CARRIER
VERTICAL BACK-TO-BACK**

SERIES 12724-OS4

FORMERLY 12784 SERIES



▲ FOR DIMENSION SHORTER THAN 5-1/2" (1" MIN) CUT EXTENSION. FOR LONGER EXTENSION (10-1/2" MAX) SPECIFY (-10)

■ RECOMMEND FEET BE SECURED TO FLOOR WITH 1/2" BOLTS AND ANCHORS (BY OTHERS).

⊗ FOR SIPHON JET ROUGHING OVER 6" OR BLOWOUT ROUGHING OVER 12-1/2" SPECIFY ON ORDER.

SIPHON JET DIMS SHOWN.
FOR BLOWOUT DIMS, USE:
⊗ MIN 11 & MAX 16-1/2"

□	-PF	PYLON FOOT, STD.
□	-OR	O-RING CARRIER
□	-SD	SPECIAL-DUTY 500 LB. CARRIER
□	-HS	HUB & SPIGOT
■	-OS4	OPPOSITE VENT 4" NO-HUB BRANCH
□	-HVS4	VENT SIDE 4" HUB BRANCH
□	-VP	VANDAL-PROOF TRIM

□	-1	POSITIONING FRAME
□	-6	SUPPLY PIPE SUPPORT (SPECIFY TYPE OF PIPE)
□	-10	ABS EXTENSION THROUGH 10-1/2" WALL
□	-24	FLOOR MOUNTED BACK OUTLET CHINA BOWL
□	-30	CAST IRON ADJ. EXTENSION W/ CONNECTOR
□	-30-2	CAST IRON ADJ. EXTENSION W/ CONNECTOR & TEST CAP
□	-32	CARRIER FOR WIDE CHASE INSTALLATIONS
□	-35	CARRIER FOR WHEELCHAIR HIGH ROUGH

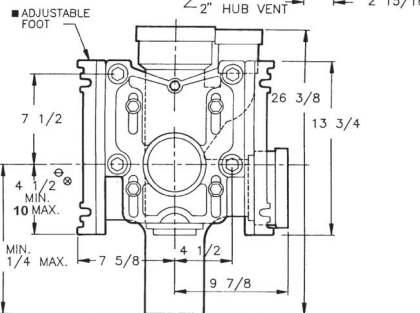
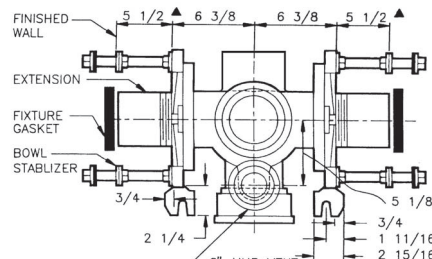
SPECIFICATION:

JOSAM 12724-HS-HVS4 SERIES COATED CAST IRON DOUBLE VERTICAL 4" HUB & SPIGOT FITTING WITH RIGHT-HAND HUB & SPIGOT BRANCH INLET AND 2" HUB & SPIGOT OFFSET VENT. ADJUSTABLE CARRIER BODY, INVERTIBLE FOR SIPHON JET OR BLOWOUT CLOSETS, WITH ABS EXTENSION WITH INTEGRAL TEST CAP, PYLON FEET, ANCHOR FOOT, PLATED HARDWARE AND NEOPRENE FIXTURE GASKET.

**CLOSET CARRIER
VERTICAL BACK-TO-BACK**

SERIES 12724-HS-HVS4

FORMERLY 12214A SERIES



▲ FOR DIMENSION SHORTER THAN 5-1/2" (1" MIN) CUT EXTENSION. FOR LONGER EXTENSION (10-1/2" MAX) SPECIFY (-10)

■ RECOMMEND FEET BE SECURED TO FLOOR WITH 1/2" BOLTS AND ANCHORS (BY OTHERS).

⊗ FOR SIPHON JET ROUGHING OVER 6" OR BLOWOUT ROUGHING OVER 12-1/2" SPECIFY ON ORDER.

SIPHON JET DIMS SHOWN.
FOR BLOWOUT DIMS, USE:
⊗ MIN 11 & MAX 16-1/2"

□	-PF	PYLON FOOT, STD.
□	-OR	O-RING CARRIER
□	-SD	SPECIAL-DUTY 500 LB. CARRIER
□	-HS	HUB & SPIGOT
■	-OS4	OPPOSITE VENT 4" NO-HUB BRANCH
□	-HVS4	VENT SIDE 4" HUB BRANCH
□	-VP	VANDAL-PROOF TRIM

□	-1	POSITIONING FRAME
□	-6	SUPPLY PIPE SUPPORT (SPECIFY TYPE OF PIPE)
□	-10	ABS EXTENSION THROUGH 10-1/2" WALL
□	-24	FLOOR MOUNTED BACK OUTLET CHINA BOWL
□	-30	CAST IRON ADJ. EXTENSION W/ CONNECTOR
□	-30-2	CAST IRON ADJ. EXTENSION W/ CONNECTOR & TEST CAP
□	-32	CARRIER FOR WIDE CHASE INSTALLATIONS
□	-35	CARRIER FOR WHEELCHAIR HIGH ROUGH

DRAWING No. 05/10/08

JOSAM COMPANY
MICHIGAN CITY, INDIANA

NOTES:

A-13756-K

DRAWING No. 05/10/08

JOSAM COMPANY
MICHIGAN CITY, INDIANA

NOTES:

A-14680-K

SPECIFICATION:

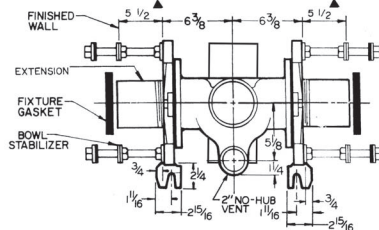
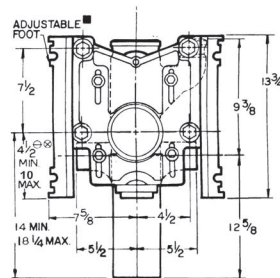
JOSAM 12724-D4 SERIES COATED CAST IRON DOUBLE VERTICAL 4" NO-HUB ON STACK FITTING WITH TWO 4" NO-HUB BRANCH INLETS AND 2" NO-HUB OFFSET VENT. ADJUSTABLE CARRIER BODY, INVERTIBLE FOR SIPHON JET OR BLOWOUT CLOSETS, WITH ABS EXTENSION WITH INTEGRAL TEST CAP, PYLON FEET, ANCHOR FOOT, PLATED HARDWARE AND NEOPRENE FIXTURE GASKET.

CLOSET CARRIER VERTICAL BACK-TO-BACK

SERIES

12724-D4

FORMERLY 12814 SERIES



- ▲ FOR DIMENSION SHORTER THAN 5-1/2" (1" MIN) CUT EXTENSION. FOR LONGER EXTENSION (10-1/2" MAX) SPECIFY (-10)

- RECOMMEND FEET BE SECURED TO FLOOR WITH 1/2" BOLTS AND ANCHORS (BY OTHERS).

- ⊗ FOR SIPHON JET ROUGHING OVER 6" OR BLOWOUT ROUGHING OVER 12-1/2" SPECIFY ON ORDER.

SIPHON JET DIMS SHOWN.
FOR BLOWOUT DIMS, USE:
⊖ MIN 11 & MAX 15-1/2"

□	-PF	PYLON FOOT, STD.
□	-OR	O-RING CARRIER
□	-SD	SPECIAL-DUTY 500 LB. CARRIER
□	-HS	HUB & SPIGOT
□	-D4	DOUBLE 4" NO-HUB BRANCHES
□	-VP	VANDAL-PROOF TRIM
□	-1	POSITIONING FRAME

□	-6	SUPPLY PIPE SUPPORT (SPECIFY TYPE OF PIPE)
□	-10	ABS EXTENSION THROUGH 10-1/2" WALL
□	-24	FLOOR MOUNTED BACK OUTLET CHINA BOWL
□	-30	CAST IRON ADJ. EXTENSION W/ CONNECTOR
□	-30-2	CAST IRON ADJ. EXTENSION W/ CONNECTOR & TEST CAP
□	-32	CARRIER FOR WIDE CHASE INSTALLATIONS
□	-35	CARRIER FOR WHEELCHAIR HIGH ROUGH

SPECIFICATION:

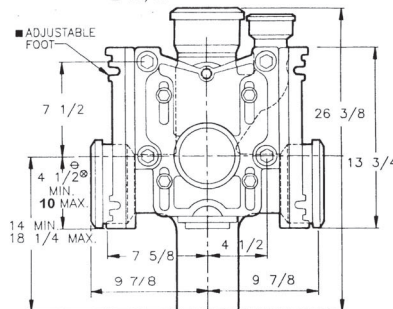
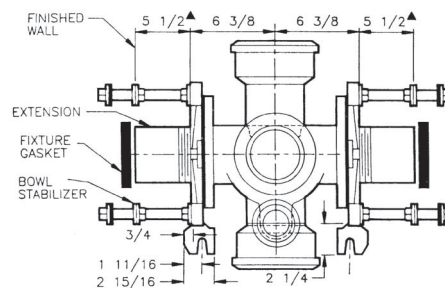
JOSAM 12724-HS-HD4 SERIES COATED CAST IRON DOUBLE VERTICAL 4" HUB & SPIGOT FITTING WITH DOUBLE HUB & SPIGOT BRANCH INLETS AND 2" HUB & SPIGOT OFFSET VENT. ADJUSTABLE CARRIER BODY, INVERTIBLE FOR SIPHON JET OR BLOWOUT CLOSETS, WITH ABS EXTENSION WITH INTEGRAL TEST CAP, PYLON FEET, ANCHOR FOOT, PLATED HARDWARE AND NEOPRENE FIXTURE GASKET.

CLOSET CARRIER VERTICAL BACK-TO-BACK

SERIES

12724-HS-HD4

FORMERLY 12314A SERIES



- ▲ FOR DIMENSION SHORTER THAN 5-1/2" (1" MIN) CUT EXTENSION. FOR LONGER EXTENSION (10-1/2" MAX) SPECIFY (-10)

- RECOMMEND FEET BE SECURED TO FLOOR WITH 1/2" BOLTS AND ANCHORS (BY OTHERS).

- ⊗ FOR SIPHON JET ROUGHING OVER 6" OR BLOWOUT ROUGHING OVER 12-1/2" SPECIFY ON ORDER.

SIPHON JET DIMS SHOWN.
FOR BLOWOUT DIMS, USE:
⊖ MIN 11 & MAX 15-1/2"

□	-PF	PYLON FOOT, STD.
□	-OR	O-RING CARRIER
□	-SD	SPECIAL-DUTY 500 LB. CARRIER
□	-HS	HUB & SPIGOT
□	-HD4	DOUBLE 4" HUB BRANCHES
□	-VP	VANDAL-PROOF TRIM
□	-1	POSITIONING FRAME

□	-6	SUPPLY PIPE SUPPORT (SPECIFY TYPE OF PIPE)
□	-10	ABS EXTENSION THROUGH 10-1/2" WALL
□	-24	FLOOR MOUNTED BACK OUTLET CHINA BOWL
□	-30	CAST IRON ADJ. EXTENSION W/ CONNECTOR
□	-30-2	CAST IRON ADJ. EXTENSION W/ CONNECTOR & TEST CAP
□	-32	CARRIER FOR WIDE CHASE INSTALLATIONS
□	-35	CARRIER FOR WHEELCHAIR HIGH ROUGH

DRAWING No. 05/10/08

JOSAM COMPANY
MICHIGAN CITY, INDIANA

NOTES:

A-13753-K

DRAWING No. 05/10/08

JOSAM COMPANY
MICHIGAN CITY, INDIANA

NOTES:

A-14685-K

⚠ WARNING: Cancer and Reproductive Harm - www.p65warnings.ca.gov

SPECIFICATION:

JOSAM 14004 SERIES COATED CAST IRON SINGLE VERTICAL 4" HUB AND SPIGOT LEFT-HAND OFFSET FITTING WITH 2" HUB VENT, ADJUSTABLE CARRIER BODY, INVERTIBLE FOR SIPHON JET OR BLOWOUT CLOSETS, WITH ABS EXTENSION WITH INTEGRAL TEST CAP, PYLON FEET, PLATED HARDWARE AND NEOPRENE FIXTURE GASKET.

CLOSET CARRIER
SINGLE, LEFT HAND OFFSET AND 2" VENT

SERIES 14004

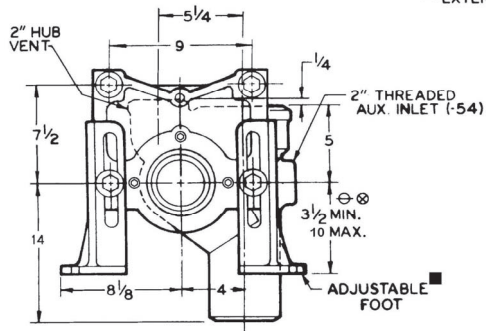
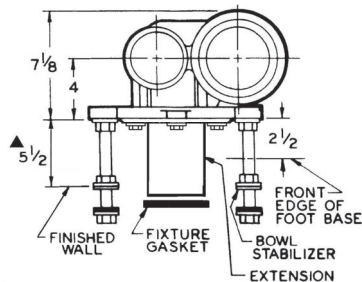
▲ FOR DIMENSION SHORTER THAN 5-1/2" (1" MIN) CUT EXTENSION. FOR LONGER EXTENSION (10-12" MAX) SPECIFY (-10)

■ RECOMMEND FEET BE SECURED TO FLOOR WITH 1/2" BOLTS AND ANCHORS (BY OTHERS).

⊗ FOR SIPHON JET ROUGHING OVER 6" OR BLOWOUT ROUGHING OVER 12-1/2" SPECIFY ON ORDER.

SIPHON JET DIMS SHOWN FOR BLOWOUT DIMS. USE:

⊖ MIN 11 & MAX 16-1/2"



- -VP VANDAL-PROOF TRIM
- -1 POSITIONING FRAME
- -6 SUPPLY PIPE SUPPORT (SPECIFY TYPE OF PIPE)
- -21 HANGER TYPE CLOSET ADAPTER
- -54 THREADED AUXILIARY INLET, OPPOSITE VENT

SPECIFICATION:

JOSAM 14024 SERIES COATED CAST IRON SINGLE VERTICAL 4" HUB AND SPIGOT RIGHT-HAND OFFSET FITTING WITH 2" HUB VENT, ADJUSTABLE CARRIER BODY, INVERTIBLE FOR SIPHON JET OR BLOWOUT CLOSETS, WITH ABS EXTENSION WITH INTEGRAL TEST CAP, PYLON FEET, PLATED HARDWARE AND NEOPRENE FIXTURE GASKET.

CLOSET CARRIER
SINGLE, RIGHT HAND OFFSET AND 2" VENT

SERIES 14024

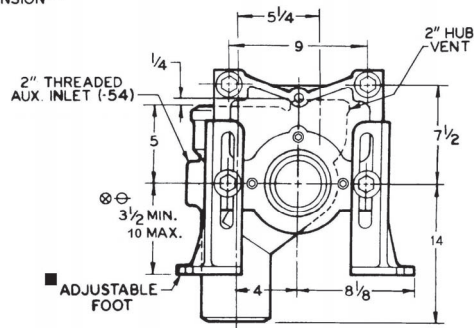
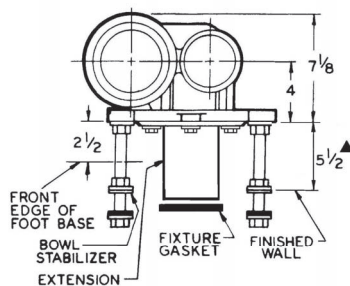
▲ FOR DIMENSION SHORTER THAN 5-1/2" (1" MIN) CUT EXTENSION. FOR LONGER EXTENSION (10-12" MAX) SPECIFY (-10)

■ RECOMMEND FEET BE SECURED TO FLOOR WITH 1/2" BOLTS AND ANCHORS (BY OTHERS).

⊗ FOR SIPHON JET ROUGHING OVER 6" OR BLOWOUT ROUGHING OVER 12-1/2" SPECIFY ON ORDER.

SIPHON JET DIMS SHOWN FOR BLOWOUT DIMS. USE:

⊖ MIN 11 & MAX 16-1/2"



- -VP VANDAL-PROOF TRIM
- -1 POSITIONING FRAME
- -6 SUPPLY PIPE SUPPORT (SPECIFY TYPE OF PIPE)
- -21 HANGER TYPE CLOSET ADAPTER
- -54 THREADED AUXILIARY INLET, OPPOSITE VENT

DRAWING No. 05/10/08

JOSAM COMPANY
MICHIGAN CITY, INDIANA

NOTES:

A-09622L-K

DRAWING No. 05/10/08

JOSAM COMPANY
MICHIGAN CITY, INDIANA

NOTES:

A-09622R-K

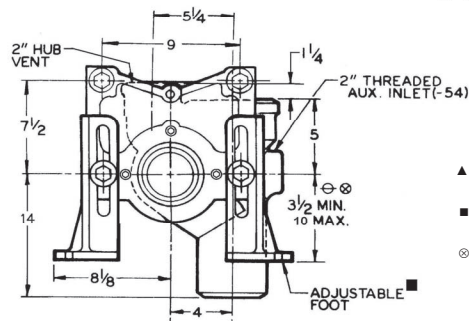
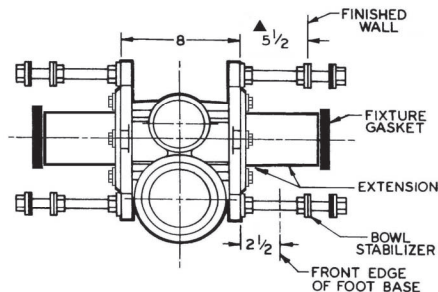
SPECIFICATION:

JOSAM 14044 SERIES COATED CAST IRON DOUBLE VERTICAL 4" HUB AND SPIGOT OFFSET FITTING WITH 2" HUB VENT, ADJUSTABLE CARRIER BODY, INVERTIBLE FOR SIPHON JET OR BLOWOUT CLOSETS, WITH ABS EXTENSION WITH INTEGRAL TEST CAP, PYLON FEET, PLATED HARDWARE AND NEOPRENE FIXTURE GASKET.

CLOSET CARRIER DOUBLE OFFSET AND 2" VENT

SERIES

14044



- ▲ FOR DIMENSION SHORTER THAN 5-1/2" (1" MIN) CUT EXTENSION. FOR LONGER EXTENSION (10-12" MAX) SPECIFY (-10)
- RECOMMEND FEET BE SECURED TO FLOOR WITH 1/2" BOLTS AND ANCHORS (BY OTHERS).
- ⊗ FOR SIPHON JET ROUGHING OVER 6" OR BLOWOUT ROUGHING OVER 12-1/2" SPECIFY ON ORDER.
- SIPHON JET DIMS SHOWN. FOR BLOWOUT DIMS, USE:
⊖ MIN 11 & MAX 16-1/2"

VP	VANDAL-PROOF TRIM
-1	POSITIONING FRAME
-6	SUPPLY PIPE SUPPORT (SPECIFY TYPE OF PIPE)
-21	HANGER TYPE CLOSET ADAPTER
-54	THREADED AUXILIARY INLET, OPPOSITE VENT

DRAWING No. 05/10/08

JOSAM COMPANY
MICHIGAN CITY, INDIANA

NOTES:

A-09631-K

SPECIFICATION:

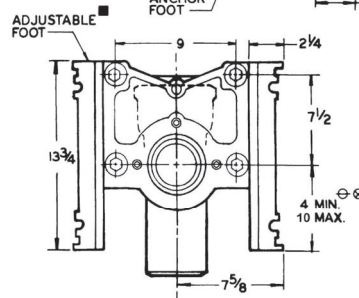
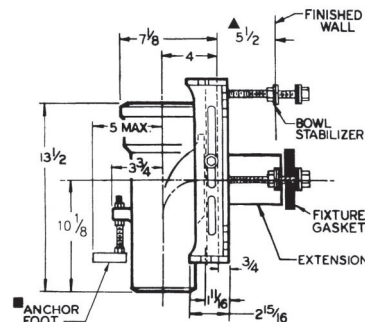
JOSAM 14064 SERIES COATED CAST IRON SINGLE VERTICAL 4" HUB AND SPIGOT FITTING WITH 4" HUB VENT, ADJUSTABLE CARRIER BODY, INVERTIBLE FOR SIPHON JET OR BLOWOUT CLOSETS, WITH ABS EXTENSION WITH INTEGRAL TEST CAP, PYLON FEET, PLATED HARDWARE AND NEOPRENE FIXTURE GASKET.

CLOSET CARRIER VERTICAL SINGLE CLOSE

SERIES

14064

- ▲ FOR DIMENSION SHORTER THAN 5-1/2" (1" MIN) CUT EXTENSION.
- RECOMMEND FEET BE SECURED TO FLOOR WITH 1/2" BOLTS AND ANCHORS (BY OTHERS).
- ⊗ FOR SIPHON JET ROUGHING OVER 6" OR BLOWOUT ROUGHING OVER 12-1/2" SPECIFY ON ORDER.
- SIPHON JET DIMS SHOWN. FOR BLOWOUT DIMS, USE:
⊖ MIN 11 & MAX 16-1/2"



SD	SPECIAL DUTY 500 LB. CARRIER
VP	VANDAL-PROOF TRIM
-1	POSITIONING FRAME
-6	SUPPLY PIPE SUPPORT (SPECIFY TYPE OF PIPE)
-45	THREADED LEFT HAND AUXILIARY INLET
-46	THREADED RIGHT HAND AUXILIARY INLET

DRAWING No. 05/10/08

JOSAM COMPANY
MICHIGAN CITY, INDIANA

NOTES:

A-09350-K

! WARNING: Cancer and Reproductive Harm - www.p65warnings.ca.gov

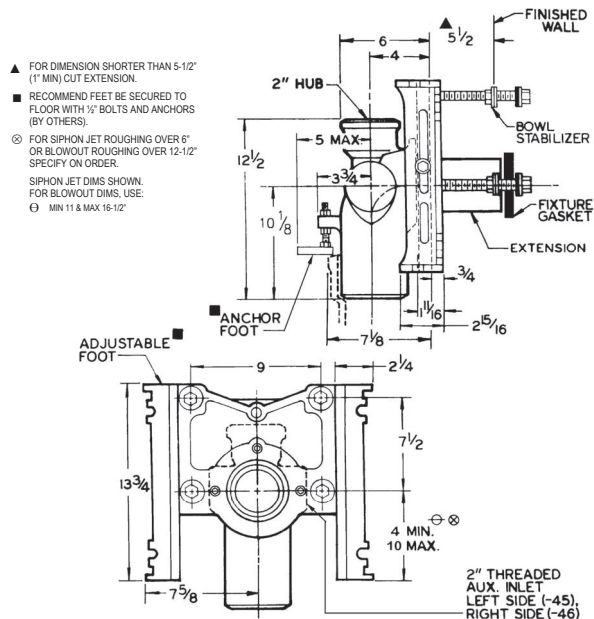
SPECIFICATION:

JOSAM 14104 SERIES COATED CAST IRON SINGLE VERTICAL 4" HUB AND SPIGOT FITTING WITH 2" HUB VENT, ADJUSTABLE CARRIER BODY, INVERTIBLE FOR SIPHON JET OR BLOWOUT CLOSURES, WITH ABS EXTENSION WITH INTEGRAL TEST CAP, PYLON FEET, PLATED HARDWARE AND NEOPRENE FIXTURE GASKET.

**CLOSET CARRIER
VERTICAL SINGLE CLOSE**

SERIES

14104



- ☐ -SD SPECIAL DUTY 500 LB. CARRIER
- ☐ -VP VANDAL-PROOF TRIM
- ☐ -1 POSITIONING FRAME
- ☐ -6 SUPPLY PIPE SUPPORT (SPECIFY TYPE OF PIPE)
- ☐ -45 THREADED LEFT HAND AUXILIARY INLET
- ☐ -46 THREADED RIGHT HAND AUXILIARY INLET

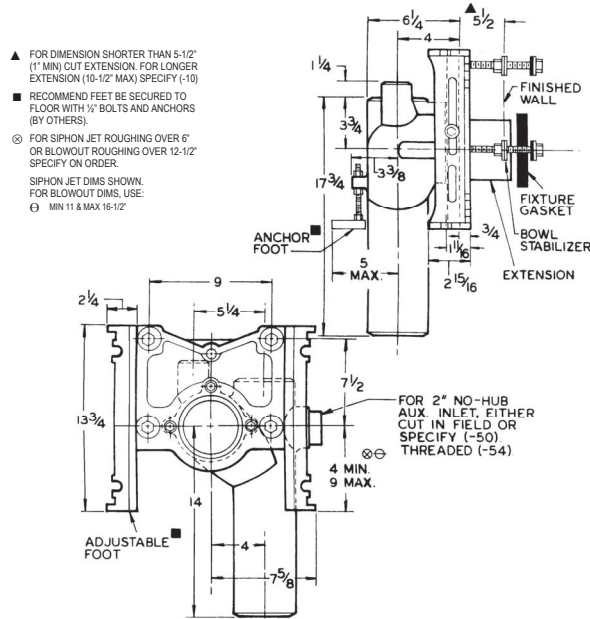
SPECIFICATION:

JOSAM 14404 SERIES COATED CAST IRON SINGLE VERTICAL 4" NO-HUB LEFT-HAND OFFSET FITTING WITH 2" NO-HUB VENT, ADJUSTABLE CARRIER BODY, INVERTIBLE FOR SIPHON JET OR BLOWOUT CLOSURES, WITH ABS EXTENSION WITH INTEGRAL TEST CAP, PYLON FEET, PLATED HARDWARE AND NEOPRENE FIXTURE GASKET.

**CLOSET CARRIER
SINGLE, LEFT HAND OFFSET AND 2" VENT**

SERIES

14404



- ☐ -SD SPECIAL DUTY 500 LB. CARRIER
- ☐ -VP VANDAL-PROOF TRIM
- ☐ -1 POSITIONING FRAME
- ☐ -6 SUPPLY PIPE SUPPORT (SPECIFY TYPE OF PIPE)
- ☐ -10 ABS EXTENSION THROUGH 10-1/2" WALL
- ☐ -24 CARRIER FOR FLOOR MOUNTED BACK OUTLET CHINA BOWLS

- ☐ -30 CAST IRON ADJUSTABLE EXTENSION W/ CONNECTOR
- ☐ -30-2 CAST IRON ADJ. EXT. W/ CONNECTOR & TEST CAP
- ☐ -50 NO-HUB HIGH AUXILIARY INLET, OPPOSITE VENT
- ☐ -54 THREADED HIGH AUXILIARY INLET, OPPOSITE VENT

DRAWING No. 05/10/08

JOSAM COMPANY
MICHIGAN CITY, INDIANA

NOTES:

A-09619-K

DRAWING No. 05/10/08

JOSAM COMPANY
MICHIGAN CITY, INDIANA

NOTES:

A-13996L-K

SPECIFICATION:

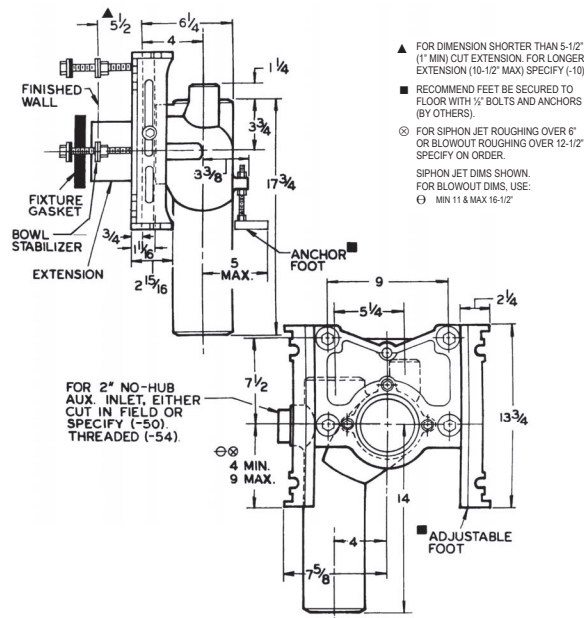
JOSAM 14424 SERIES COATED CAST IRON SINGLE VERTICAL 4" NO-HUB RIGHT-HAND OFFSET FITTING WITH 2" NO-HUB VENT, ADJUSTABLE CARRIER BODY, INVERTIBLE FOR SIPHON JET OR BLOWOUT CLOSETS, WITH ABS EXTENSION WITH INTEGRAL TEST CAP, PYLON FEET, PLATED HARDWARE AND NEOPRENE FIXTURE GASKET.

CLOSET CARRIER

SINGLE, RIGHT HAND OFFSET AND 2" VENT

SERIES

14424



- SD SPECIAL DUTY 500 LB. CARRIER
- VP VANDAL-PROOF TRIM
- 1 POSITIONING FRAME
- 6 SUPPLY PIPE SUPPORT (SPECIFY TYPE OF PIPE)
- 10 ABS EXTENSION THROUGH 10-1/2" WALL
- 24 CARRIER FOR FLOOR MOUNTED BACK OUTLET CHINA BOWLS

- 30 CAST IRON ADJUSTABLE EXTENSION W/ CONNECTOR
- 30-2 CAST IRON ADJ. EXT. W/ CONNECTOR & TEST CAP
- 50 NO-HUB HIGH AUXILIARY INLET, OPPOSITE VENT
- 54 THREADED HIGH AUXILIARY INLET, OPPOSITE VENT

DRAWING No. 05/10/08

JOSAM COMPANY
MICHIGAN CITY, INDIANA

NOTES:

A-13996R-K

SPECIFICATION:

JOSAM 14444 SERIES COATED CAST IRON 4" NO-HUB BACK-TO-BACK VERTICAL OFFSET FITTING WITH 2" NO-HUB VENT, ADJUSTABLE CARRIER BODY, INVERTIBLE FOR SIPHON JET OR BLOWOUT CLOSETS, WITH ABS EXTENSION WITH INTEGRAL TEST CAP, PYLON FEET, PLATED HARDWARE AND NEOPRENE FIXTURE GASKET.

CLOSET CARRIER

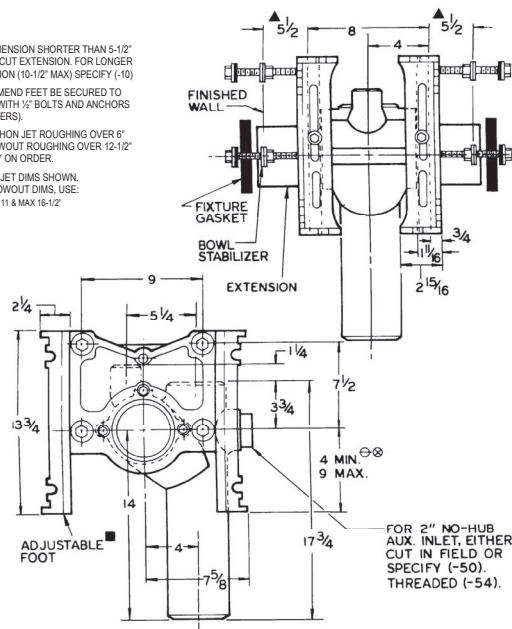
DOUBLE OFFSET AND 2" VENT

SERIES

14444

- ▲ FOR DIMENSION SHORTER THAN 5-1/2" (1" MIN) CUT EXTENSION. FOR LONGER EXTENSION (10-1/2" MAX) SPECIFY (-10)
- RECOMMEND FEET BE SECURED TO FLOOR WITH 1/2" BOLTS AND ANCHORS (BY OTHERS).
- ⊙ FOR SIPHON JET ROUGHING OVER 6" OR BLOWOUT ROUGHING OVER 12-1/2" SPECIFY ON ORDER.

SIPHON JET DIMS SHOWN. FOR BLOWOUT DIMS, USE:
⊖ MIN 11 & MAX 16-1/2"



- SD SPECIAL DUTY 500 LB. CARRIER
- VP VANDAL-PROOF TRIM
- 1 POSITIONING FRAME
- 6 SUPPLY PIPE SUPPORT (SPECIFY TYPE OF PIPE)
- 10 ABS EXTENSION THROUGH 10-1/2" WALL
- 24 CARRIER FOR FLOOR MOUNTED BACK OUTLET CHINA BOWLS

- 30 CAST IRON ADJUSTABLE EXTENSION W/ CONNECTOR
- 30-2 CAST IRON ADJ. EXT. W/ CONNECTOR & TEST CAP
- 50 NO-HUB HIGH AUXILIARY INLET, OPPOSITE VENT
- 54 THREADED HIGH AUXILIARY INLET, OPPOSITE VENT

DRAWING No. 05/10/08

JOSAM COMPANY
MICHIGAN CITY, INDIANA

NOTES:

A-14002-K

SPECIFICATION:

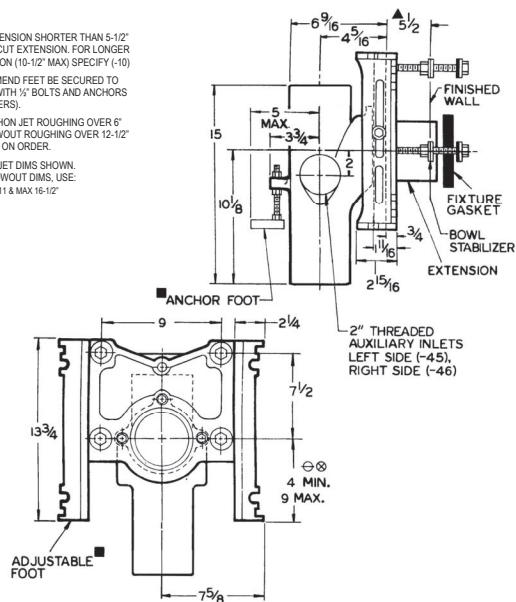
JOSAM 14464 SERIES COATED CAST IRON SINGLE VERTICAL 4" NO-HUB SINGLE FITTING WITH 4" NO-HUB VENT, ADJUSTABLE CARRIER BODY, INVERTIBLE FOR SIPHON JET OR BLOWOUT CLOSETS, WITH ABS EXTENSION WITH INTEGRAL TEST CAP, PYLON FEET, PLATED HARDWARE AND NEOPRENE FIXTURE GASKET.

CLOSET CARRIER
SINGLE CLOSE WITH 4" VENT

SERIES

14464

- ▲ FOR DIMENSION SHORTER THAN 5-1/2" (1" MIN) CUT EXTENSION, FOR LONGER EXTENSION (10-1/2" MAX) SPECIFY (-10)
- RECOMMEND FEET BE SECURED TO FLOOR WITH 1/2" BOLTS AND ANCHORS (BY OTHERS).
- ⊗ FOR SIPHON JET ROUGHING OVER 6" OR BLOWOUT ROUGHING OVER 12-1/2" SPECIFY ON ORDER.
- SIPHON JET DIMS SHOWN, FOR BLOWOUT DIMS, USE:
⊖ MIN 11 & MAX 15-1/2"



- ☐ -SD SPECIAL DUTY 500 LB. CARRIER
- ☐ -VP VANDAL-PROOF TRIM
- ☐ -1 POSITIONING FRAME
- ☐ -6 SUPPLY PIPE SUPPORT (SPECIFY TYPE OF PIPE)
- ☐ -10 ABS EXTENSION THROUGH 10-1/2" WALL
- ☐ -24 CARRIER FOR FLOOR MOUNTED BACK OUTLET CHINA BOWLS

- ☐ -30 CAST IRON ADJUSTABLE EXTENSION W/ CONNECTOR
- ☐ -30-2 CAST IRON ADJ. EXT. W/ CONNECTOR & TEST CAP
- ☐ -45 THREADED LEFT-HAND AUXILIARY INLET
- ☐ -46 THREADED RIGHT-HAND AUXILIARY INLET

DRAWING No. 05/10/08

JOSAM COMPANY
MICHIGAN CITY, INDIANA

NOTES:

A-13817-K

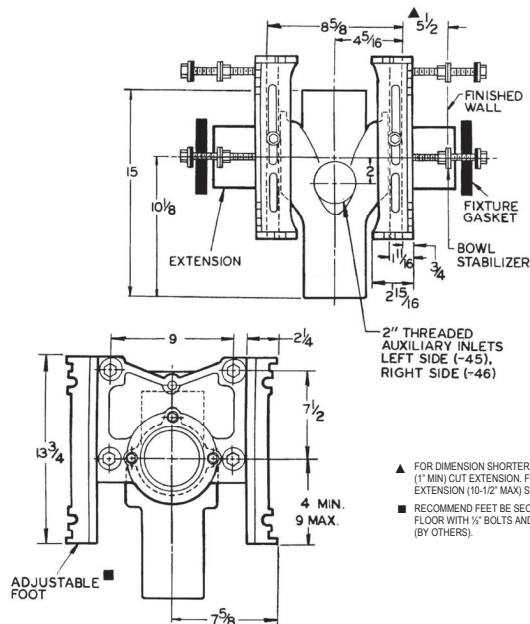
SPECIFICATION:

JOSAM 14484 SERIES COATED CAST IRON DOUBLE VERTICAL 4" NO-HUB BACK-TO-BACK FITTING WITH 4" NO-HUB VENT, ADJUSTABLE CARRIER BODY, FOR SIPHON JET ONLY, WITH ABS EXTENSION WITH INTEGRAL TEST CAP, PYLON FEET, PLATED HARDWARE AND NEOPRENE FIXTURE GASKET.

CLOSET CARRIER
DOUBLE CLOSE WITH 4" VENT

SERIES

14484



- ☐ -SD SPECIAL DUTY 500 LB. CARRIER
- ☐ -VP VANDAL-PROOF TRIM
- ☐ -1 POSITIONING FRAME
- ☐ -6 SUPPLY PIPE SUPPORT (SPECIFY TYPE OF PIPE)
- ☐ -10 ABS EXTENSION THROUGH 10-1/2" WALL
- ☐ -24 CARRIER FOR FLOOR MOUNTED BACK OUTLET CHINA BOWLS

- ☐ -30 CAST IRON ADJUSTABLE EXTENSION W/ CONNECTOR
- ☐ -30-2 CAST IRON ADJ. EXT. W/ CONNECTOR & TEST CAP
- ☐ -45 THREADED LEFT-HAND AUXILIARY INLET
- ☐ -46 THREADED RIGHT-HAND AUXILIARY INLET

DRAWING No. 05/10/08

JOSAM COMPANY
MICHIGAN CITY, INDIANA

NOTES:

A-13886-K

SPECIFICATION:

JOSAM 14504 SERIES COATED CAST IRON SINGLE VERTICAL 4" NO-HUB SINGLE FITTING WITH 2" NO-HUB VENT, ADJUSTABLE CARRIER BODY, INVERTIBLE FOR SIPHON JET OR BLOWOUT CLOSETS, WITH ABS EXTENSION WITH INTEGRAL TEST CAP, PYLON FEET, PLATED HARDWARE AND NEOPRENE FICTURE GASKET.

CLOSET CARRIER

SINGLE CLOSET WITH 2" VENT

SERIES

14504

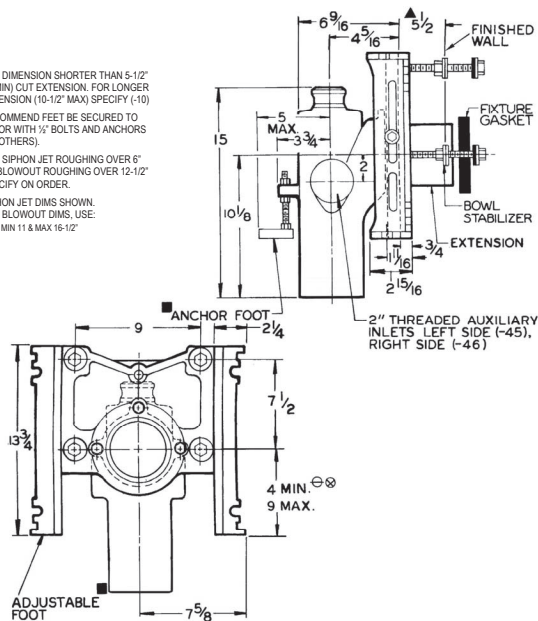
- ▲ FOR DIMENSION SHORTER THAN 5-1/2" (1" MIN) CUT EXTENSION. FOR LONGER EXTENSION (10-12" MAX) SPECIFY (-10)

- RECOMMEND FEET BE SECURED TO FLOOR WITH 1/2" BOLTS AND ANCHORS (BY OTHERS).

- ◎ FOR SIPHON JET ROUGHING OVER 6" OR BLOWOUT ROUGHING OVER 12-1/2" SPECIFY ON ORDER.

SIPHON JET DIMS SHOWN.
FOR BLOWOUT DIMS, USE:

- MIN 11 & MAX 16-1/2"



- | | |
|---|---|
| <ul style="list-style-type: none"> —SD SPECIAL DUTY 500 LB. CARRIER —VP VANDAL-PROOF TRIM —1 POSITIONING FRAME —6 SUPPLY PIPE SUPPORT (SPECIFY TYPE OF PIPE) —10 ABS EXTENSION THROUGH 10-1/2" WALL —24 CARRIER FOR FLOOR MOUNTED BACK OUTLET CHINA BOWLS | <ul style="list-style-type: none"> —30 CAST IRON ADJUSTABLE EXTENSION W/ CONNECTOR —30-2 CAST IRON ADJ. EXT. W/ CONNECTOR & TEST CAP —45 THREADED LEFT-HAND AUXILIARY INLET —46 THREADED RIGHT-HAND AUXILIARY INLET |
|---|---|

DRAWING No. 06/11/08

JOSAM COMPANY

MICHIGAN CITY, INDIANA

NOTES:

A-13818-K

SPECIFICATION:

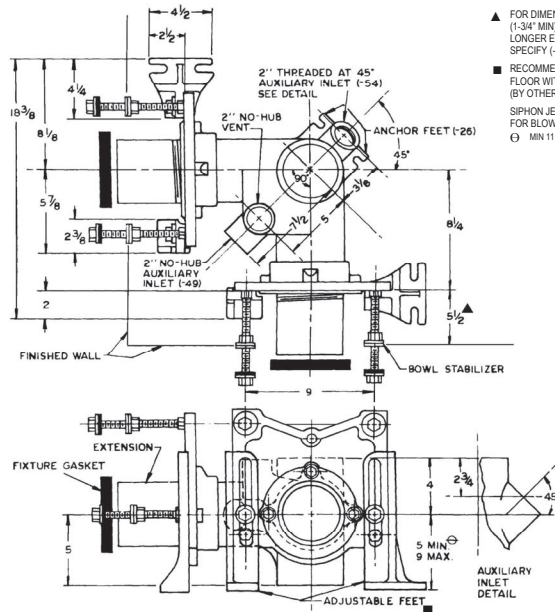
JOSAM 15964 SERIES COATED CAST IRON VERTICAL 4" NO-HUB DOUBLE WASTE 90° STACK FITTING WITH 4" BRANCHES, 2" NO-HUB VENT, WITH CLOSET CARRIERS INVERTIBLE FOR SIPHON JET OR BLOW-OUT CLOSETS, ABS EXTENSIONS WITH INTEGRAL TEST CAPS, BUTTRESS FEET, PLATED HARDWARE AND FICTURE GASKET.

CLOSET CARRIER

90° INSTITUTIONAL FITTING

SERIES

15964



- ▲ FOR DIMENSION SHORTER THAN 5-1/2" (1-3/4" MIN) CUT EXTENSION. FOR LONGER EXTENSION (10-12" MAX) SPECIFY (-10)

- RECOMMEND FEET BE SECURED TO FLOOR WITH 1/2" BOLTS AND ANCHORS (BY OTHERS).

SIPHON JET DIMS SHOWN.
FOR BLOWOUT DIMS, USE:

- MIN 11 & MAX 16-1/2"

- | | |
|---|--|
| <ul style="list-style-type: none"> —VP VANDAL-PROOF TRIM —1 POSITIONING FRAME —6 SUPPLY PIPE SUPPORT (SPECIFY TYPE OF PIPE) —10 ABS EXTENSION THROUGH 10-1/2" WALL —24 CARRIER FOR FLOOR MOUNTED BACK OUTLET CHINA BOWLS | <ul style="list-style-type: none"> —26 FITTING ANCHOR FOOT —30 CAST IRON ADJUSTABLE EXTENSION W/ CONNECTOR —30-2 CAST IRON ADJ. EXT. W/ CONNECTOR & TEST CAP —49 NO-HUB HIGH AUXILIARY INLET, UNDER VENT —54 THREADED HIGH AUXILIARY INLET, OPPOSITE VENT |
|---|--|

DRAWING No. 05/10/08

JOSAM COMPANY

MICHIGAN CITY, INDIANA

NOTES:

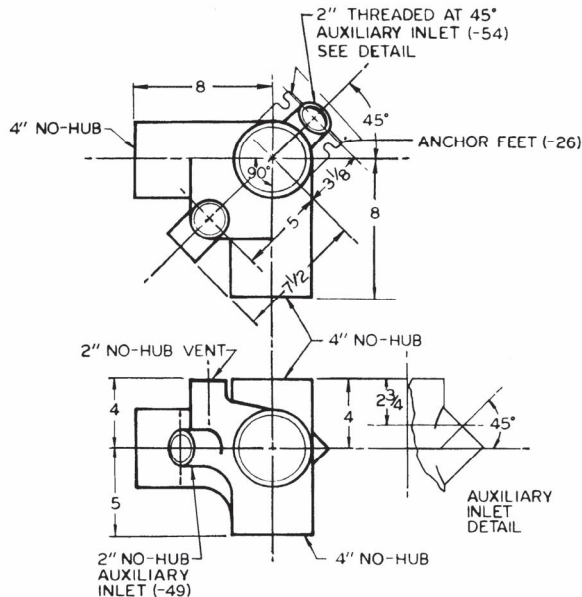
A-13922-K

SPECIFICATION:

JOSAM 15984 SERIES COATED CAST IRON VERTICAL 4" NO-HUB DOUBLE WASTE 90° STACK FITTING WITH 4" BRANCHES, 2" NO-HUB VENT.

CLOSET CARRIER
90° INSTITUTIONAL FITTING

SERIES 15984



- ☐ -26 FITTING ANCHOR FOOT
- ☐ -49 NO-HUB HIGH AUXILIARY INLET, UNDER VENT
- ☐ -54 THREADED HIGH AUXILIARY INLET, OPPOSITE VENT

DRAWING No. 05/10/08

JOSAM COMPANY
MICHIGAN CITY, INDIANA

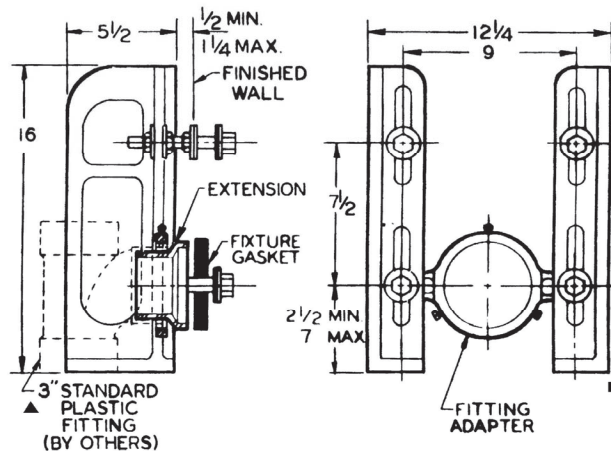
NOTES:

SPECIFICATION:

JOSAM 16123 SERIES COATED CAST IRON SINGLE COMMERCIAL CLOSET CARRIER AND 3" PVC PLASTIC FITTING ADAPTER WITH EXTENSION AND CHROME PLATED TRIM.

CLOSET CARRIER
FLOOR MOUNT, PVC ADAPTER TYPE

SERIES 16123



- ☐ -VP VANDAL-PROOF TRIM
- ☐ -1 POSITIONING FRAME
- ☐ -6 SUPPLY PIPE SUPPORT (SPECIFY TYPE OF PIPE)
- ☐ -13 ABS EXTENSION
- ☐ -21 HANGER TYPE CLOSET ADAPTER

- ▲ THIS CARRIER CAN ALSO BE USED WITH A 4x4x3 TEE.
- RECOMMEND FEET BE SECURED TO FLOOR WITH 1/2" BOLTS AND ANCHORS (BY OTHERS).

DRAWING No. 05/10/08

JOSAM COMPANY
MICHIGAN CITY, INDIANA

NOTES:

A-12855-K

A-13923-K