

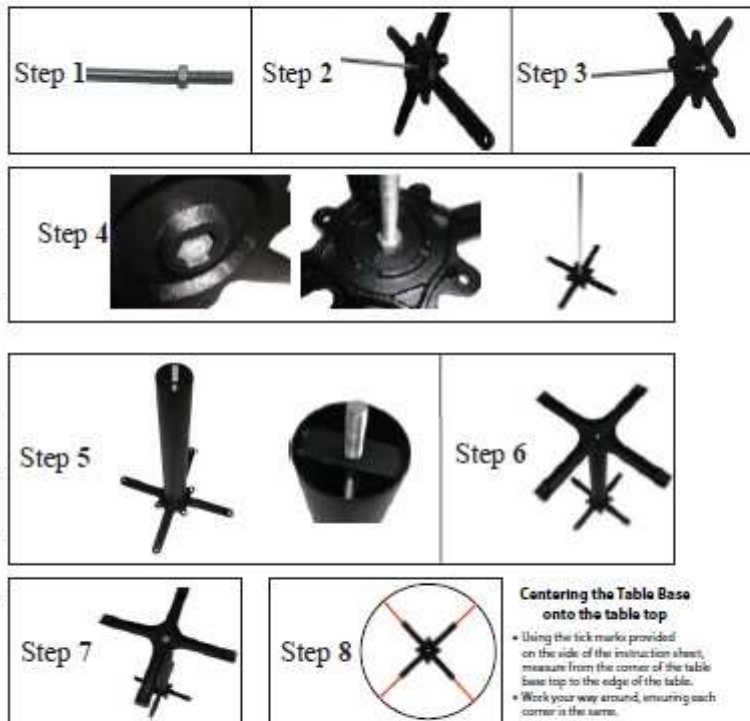
HOLLAND BAR STOOL CO.

Table Base Assembly Instructions

Part List

A		1PC
B		1PC
C		1PC
D		1PC
E		1PC
F		1PC
G		2PCS

Assembly Illustration



Assembly:

1. Thread one nut (G) on the threaded rod (C) about 4 inches down
2. With the flat side of the table mount (D) facing AWAY from the nut, place the table mount on the threaded rod.
3. Thread the remaining nut (G) on the end of the threaded rod, far enough that it will hold
4. Now tighten the first nut (G) down so the table mount (D) is sandwiched between the nuts and is securely tight. The second nut should be in the recess on the table mount.
5. Slide the column (B) down over the threaded rod. The "tab" on 1 side of the column should lock into one of the grooves in the bottom of the mounting plate, and the threaded rod should come through the cross piece (cross piece not on all bases)
6. Place the foot (A) on the column (B), guiding the threaded rod through the center hole on the foot.
7. Place the washer (F) and then the locknut (E) and tighten.
8. Place your tabletop upside-down on the floor, and place base in the middle. Measure from each end of the mounting plate to the table edge, adjusting to center the base. When each measurement is the same, use screws to attach base to top.

www.HollandBarStool.com

Tick Marks