

SUBJECT:

Field reversible hinges on Avantco model CFD1

2 Person job

Recommended tools:

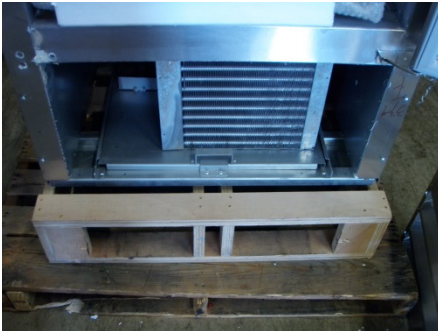
- # 2 Phillips Head Screwdriver
- #7 Socket & wrench
- # 14mm Socket

Parts needed:

- 178CFD1KITFR CFD hinge kit which includes the following parts:
 - Part# 178HINGCFDTL Top left hinge bracket
 - Part# 178HINGCFDBL Bottom left pivot hinge

Installation instructions for reversing hinges on CFD units

- 1) Remove the bottom panel



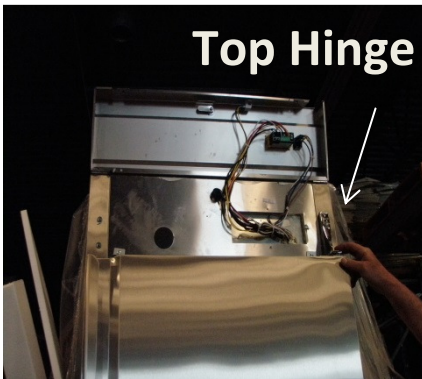
- 2) Move the cover plate from the left side of the panel to the right side.



- 3) Remove 2 screws from the top cover & lift the top cover up



- 4) Remove the Phillips screw from the top & bottom hinge



- 5) Using your wrench we recommend that you remove the top bolt & top hinge prior to removing the bottom.
Note: You will need a second person to hold the door in place while you remove the bolts and take off the top hinge



- 6) Once the top bolt & hinge have been removed, put the door in the “open” position and lift the door up and off of the bottom hinge. Flip the door upside down and set aside.
- 7) Remove the bottom hinge bolts (3) & spacer.



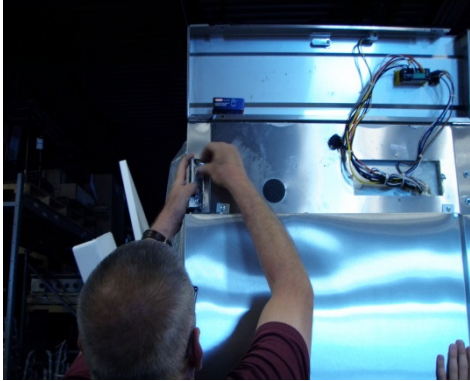
- 8) You will need to set the new bottom hinge (part# 178HINGCFDBL) to full open, it must spring closed clockwise for door to close properly. Once the hinge is set, install the new bottom hinge.



- 9) Place the spacer onto the bottom hinge and place the door onto the spacer. Once the door is on the bottom hinge correctly, close the door.



- 10) You will now need to set the top hinge (part# 178HINGCFDTL) the same way you set the bottom. (See #8)
Once the hinge is set properly, install the top hinge on the left side with the bolts that were removed in #4.



- 11) Once the top hinge has been installed check the door for proper operation.
12) If door is closing properly, move the left cover plate to the right side.



- 13) Put the top panel of the unit back down to its proper position and install the screws back into the panel.

