



# S-Series Factory Installed Options

*Must be requested on the purchase order at the time of ordering*

## **NEW! Removable Knife Package** (KNIFE-RMV)

- Available for all S-Series models
- Tool easily removes knife for more access under the knife and faster, easier cleanup
- Knife is secured in tool for operator protection
- Knife and removal tool are dish machine safe

## **NEW! Removable Carriage Package** (CARRIAGE-RMV)

- Available for all S-Series models
- Carriage easily lifts off slicer for cleaning
- Captive knob keeps carriage secure during slicing
- Carriage is removable without tilting, saving valuable space

**TOOL REMOVES KNIFE  
EASILY**



*See reverse side for more  
Factory Installed Options*



# S-Series Factory Installed Options

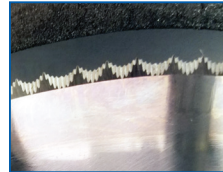


## Frozen Package

- Available for S13 and S13A only
- Slices frozen product between 0° and 32° F, as well as most non-frozen products
- Patent-pending indexing system enables accurate and precise slice thickness adjustment up to 1/8"
- 13" double serrated steel knife with hardened edge provides quality slices and higher yield



Double serrated knife front



Double serrated knife back

## Correctional Package

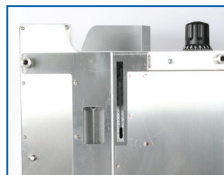
- Available for S13 and S13A only
- External fasteners are tamper resistant 6-point star shaped Torx® screw heads which can only be removed with a special driver bit supplied with the slicer.
- Knife cover, carriage tilt and sharpener blank secured with Torx® screws
- Secured sharpener blank allows real sharpener to be secured away from slicer
- Slicer feet can be secured to table
- Slide rod and end weight are non-removable
- Bottom cover is secured with Torx® screws



Tamper-proof Torx® screws



Non-removable slide rod



Fully enclosed bottom



## High Moisture Environment Package (MEATROOM)

- Available for all models
- Specific parts are specially treated to prevent damage due to moisture
- Helps protect slicer from corrosion caused by extreme moisture applications

## Stainless Steel Blade (SSK)

- Available for all models
- For high acid content applications as found in vegetable and fruit preparation
- Also recommended for tempered (semi frozen) meat cutting