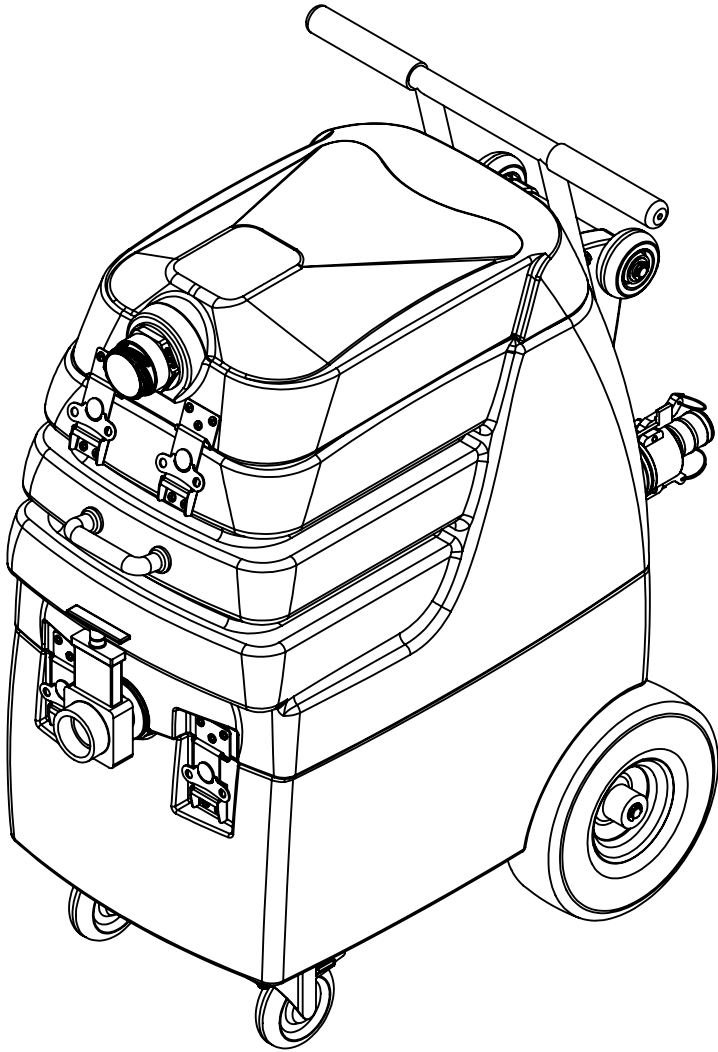


ITEM NO.	PART NO.	DESCRIPTION	QTY.
1	H135V	Cuff-Lynx, 2" male cuff x 2" mpt, vinyl	1
2	H230	screw, 10-32 x 1/2" phil pan head, s/s	59
3	H486	latch, front, set, large	5
4	P746	lid, 7000SX	1
5	G092	gasket, lid, 7000SX	1
6	H220	fitting, strain relief, cord	3
7	H221	nut, lock, 1/2" steel, electrical	3
8	H202	bolt, 1/4-20 x 3/4" hex head, s/s	6
9	H210	washer, 1/4" flat, s/s	45
10	H253	plate, dual manifold, 9" x 13"	1
11	G059	exhaust boot, plastisol	1
12	H501	vac support, 3 stage, 4-1/16"	6
13	PH634-1	sol hose, 1/4", silicone braided, clear	6
14	H217	clamp, hose, 2-1/4 dia	9
15	PH628-15	vac hose, 2", black, wire reinforced	1
16	H169	bolt, 1/4-20 x 2", hex head	10
17	C348	vac motor, lx, hybrid, w/inlet tube, 173 cfm, 120v	2
18	PH628-10	vac hose, 2", black, wire reinforced	1
19	H225	valve, drain, 1-1/2"	1
20	H485	handle, aluminum grip, black	1
21	G052	washer, buna 1-1/8" od x 3/16" id	6
22	H211	washer, 1/4"id x 1"od, flat, s/s	6
23	H768	bolt, 1/4-20 x 3/4" serrated hex flange, zinc	2
24	P745	vac tank, 7000SX	1
25	H023	filter basket, flood hog	1
26	P631	adapter, pvc, 1-1/2" mpt x 1-1/4" fms	1
27	H314	nut, lock, 1-1/2", steel	1
28	H244	adapter, pvc, 1-1/2" fms x fmpt	1
29	PH633-11	pipe, pvc, 1-1/2"	1
30	PH627-3	vac hose, 1-1/2", wire reinforced	1
31	C388	pump out, 66 gpm, stainless, 115v	1
32	H256	screw, 10-32 x 3/4" phil pan head, zinc	1
33	H877	washer, #10 lock, s/s	1
34	H289	washer, 10 flat, s/s	8
35	H273	nut, kep, #10-32 zinc	20
36	H059	bracket, ETM, pump-out	2
37	H216	nut, lock, 1/4-20, nylon insert, s/s	13
38	H342	bolt, 1/4-20 x 1" hex head, s/s	9
39	P686	swing check valve, pump out	1
40	PH627-15	vac hose, 1-1/2", black, wire reinforced	1
41	H396	barb, 1-1/2" x 1-1/2" fpt, pump out	1
42	H207	cam & grovve fitting 1-1/2", male	1
43	H205	cam & groove fitting 1-1/2", female	1
44	PH633-.25	pipe, pvc, 1-1/2"	1
45	G003	filter, foam, 2", vac stack, 1/2"	1
46	G097	filter, screen mesh, 1.90" dia	1
47	P502	adapter, 1.5" pvc, fslip x fslip	1
48	H548	handle, 1" bar, s/s	1
49	G040	grip, handle, vinyl	2
50	H042	c-clip, 12mm, external	4
51	H358B	wheel, 3"	2
52	H089	axle, 9.63" x .50" dia	1
53	P609	handle, 7000SX	1
54	B103	elbow, brass, 90 deg, 1/4"mpt x 1/4" fpt	3
55	E373	level switch, vacuum shut-off, rear threads	3
56	B113	tee, 1/4" fpt x 1/4" fpt x 1/4" fpt	2
57	B303	nipple, 3" long x 1/4" npt x 1/4" npt	2
58	H876	washer, 1/2 flat, s/s	2
59	B156	nut, 1/4" npt	1
60	B107	nipple, brass, 1/4"m, hex	2
61	B142	coupling, 1/4" fpt x 1/4" fpt	2
62	H668	caster, 4", black hub & gray tread	2

ITEM NO.	PART NO.	DESCRIPTION	QTY.
63	H641	plate, switch, RL1200, 7000DX	1
64	E512B	light, indicator, blue	1
65	P967A	plug, switch	1
66	H389	screw, 10-32 x 1/2" SHCS, alloy	1
67	H612	washer, 8 flat, black ox	1
68	E515	switch, rocker, 2 position	3
69	E550	power cord, male end, blue lit, 25", 12/3, sjtw solid jacket	2
70	E632	relay, shut-off switch, mechanical float, 115v	3
71	E564	controller, circuit light, audible	1
72	H186	screw, 10-32 x 3/4, phil, flat, countersunk, s/s, black	8
73	H487	bracket, hinge	2
74	P744	base, 7000SX	1
75	PH615-1	sol hose, 1/2", 3045 psi, black	2
76	H254	washer, axle, cut 1/2" id	4
77	H109	wheel, 10", foam filled	2
78	H371	axle, 18.03" x .50" dia	1

ITEMS NOT SHOWN

PART NO.	DESCRIPTION	QTY.
H141V	Cuff-Lynx, 2" x 1.5" reducer	1
H110V	Cuff-Lynx, 2" hose x 2" fem swivel	1
E531A	power cord, ext 50', 12/3, LA066A fem twist locks	2
A924	hose, 1-1/2" x 25', w/cam & groove fittings, pump-out	1



	NAME	DATE	MYTEE PRODUCTS, INC. 858-679-1191	
DRAWN	M.LaBarbera	11/2018	TITLE:	
CHECKED			Flood Hog	
COMMENTS:			REV	
PROPRIETARY AND CONFIDENTIAL			OD	
THE INFORMATION CONTAINED IN THIS DRAWING IS THE SOLE PROPERTY OF MYTEE PRODUCTS, INC. ANY REPRODUCTION IN PART OR AS A WHOLE WITHOUT THE WRITTEN PERMISSION OF MYTEE PRODUCTS, INC. IS PROHIBITED.			SIZE	DWG. NO.
			C	7000LX
			SCALE: 1:32	SHEET 1 OF 3

F

E

D

C

B

A

F

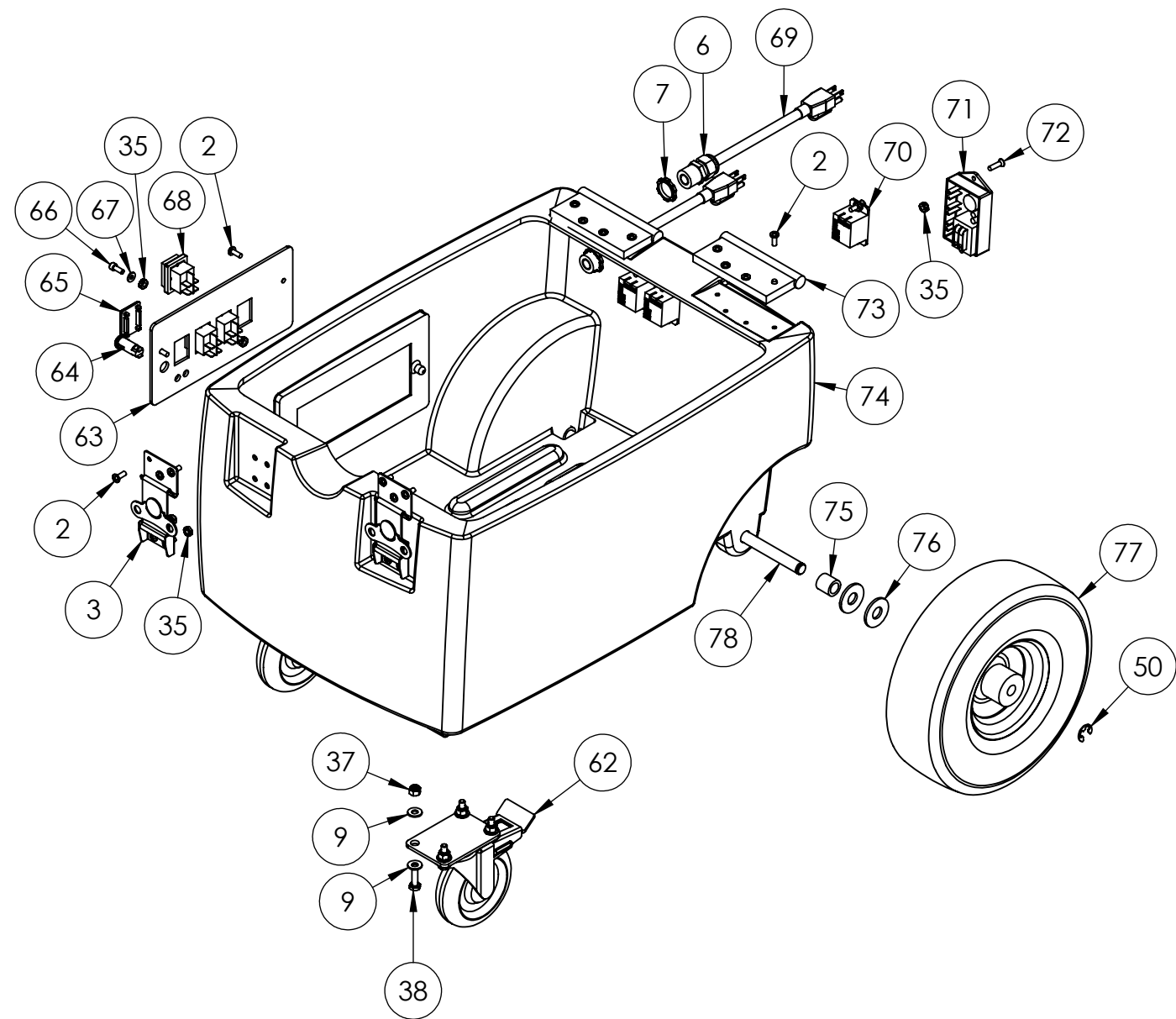
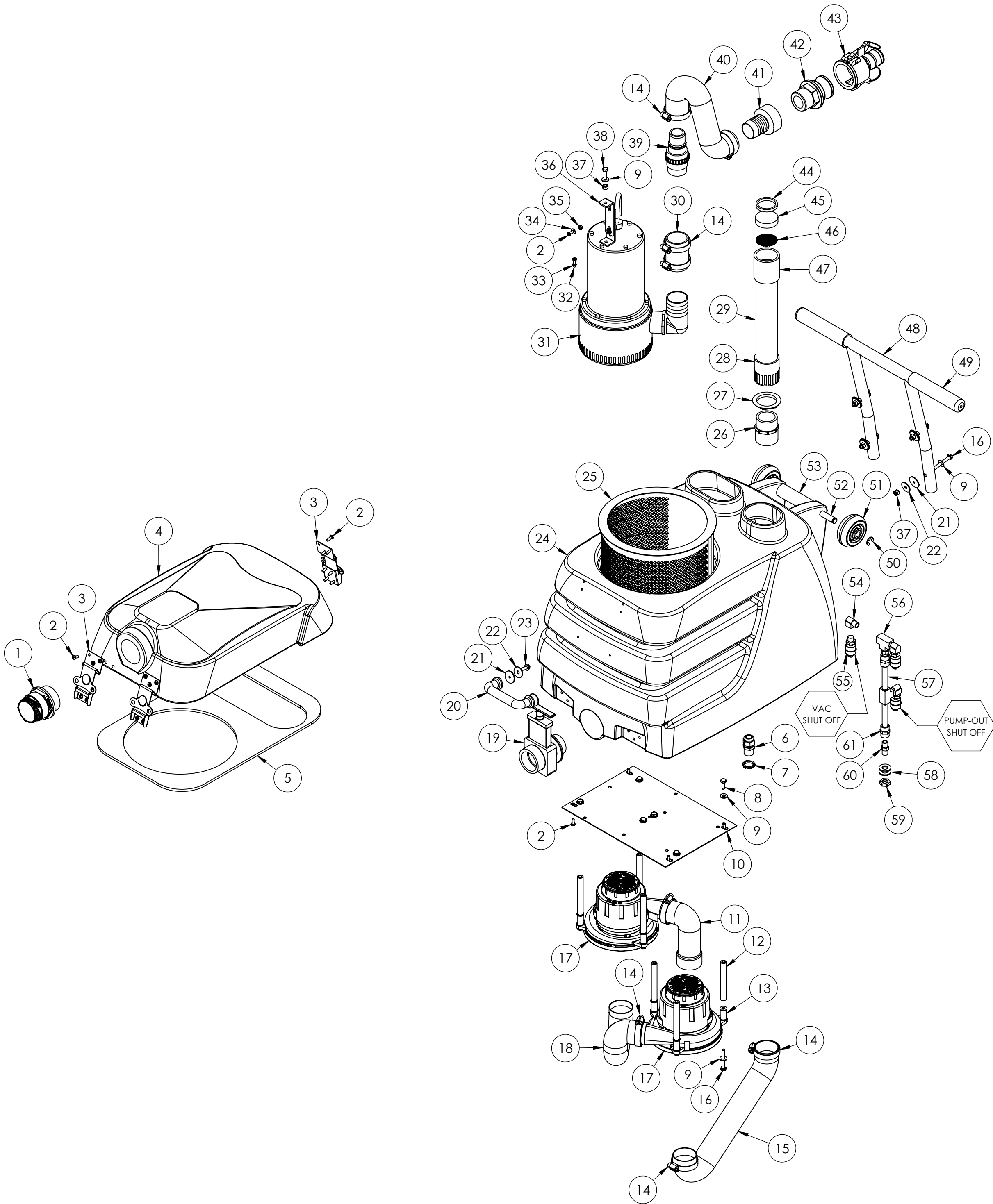
E

D

C

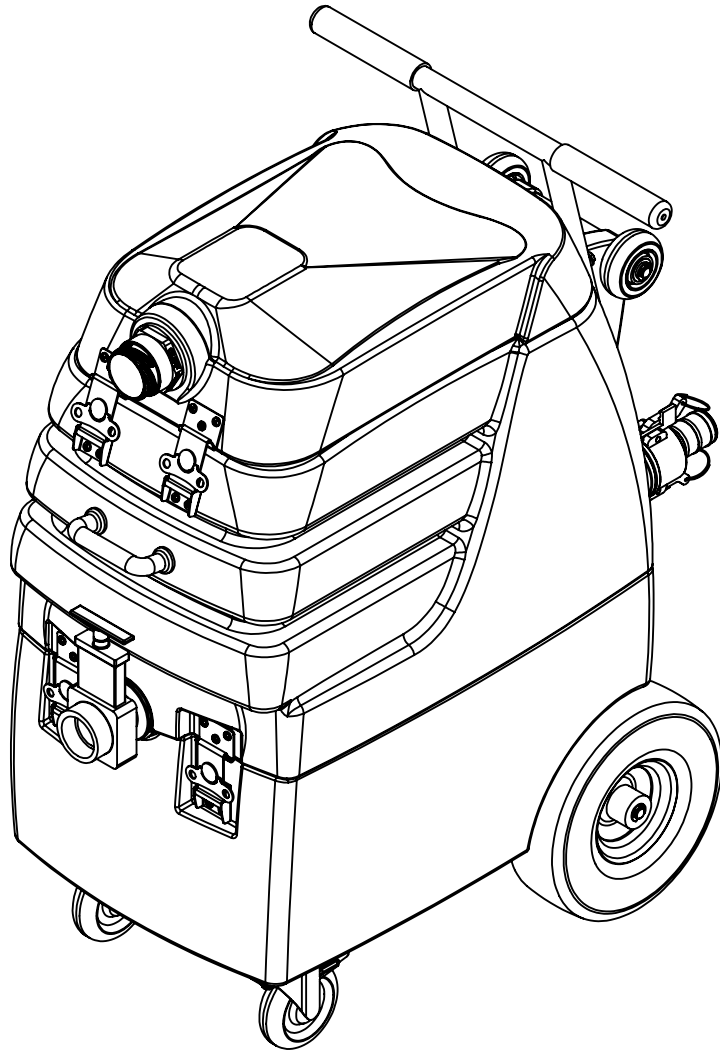
B

A



	NAME	DATE	MYTEE PRODUCTS, INC. 858-679-1191	
DRAWN	M.LaBarbera	11/2018		
CHECKED			TITLE:	
COMMENTS:			Flood Hog	
PROPRIETARY AND CONFIDENTIAL THE INFORMATION CONTAINED IN THIS DRAWING IS THE SOLE PROPERTY OF MYTEE PRODUCTS, INC. ANY REPRODUCTION IN PART OR AS A WHOLE WITHOUT THE WRITTEN PERMISSION OF MYTEE PRODUCTS, INC. IS PROHIBITED.			SIZE	DWG. NO.
			C	7000LX
			SCALE: 1:32	REV
			DO NOT SCALE DRAWING	OD
			SHEET 2 OF 3	

REVISIONS			
REV.	DESCRIPTION	DATE	APPROVED
OD	ORIGINAL DRAFT	6/12/2015	JFL



	NAME	DATE	MYTEE PRODUCTS, INC. <small>858-679-1191</small>	
DRAWN	M.LaBarbera	11/2018	TITLE:	
CHECKED			Flood Hog	
COMMENTS:				
PROPRIETARY AND CONFIDENTIAL THE INFORMATION CONTAINED IN THIS DRAWING IS THE SOLE PROPERTY OF MYTEE PRODUCTS, INC. ANY REPRODUCTION IN PART OR AS A WHOLE WITHOUT THE WRITTEN PERMISSION OF MYTEE PRODUCTS, INC. IS PROHIBITED.			SIZE C	DWG. NO. 7000LX
			SCALE: 1:32	REV OD
			DO NOT SCALE DRAWING	SHEET 3 OF 3