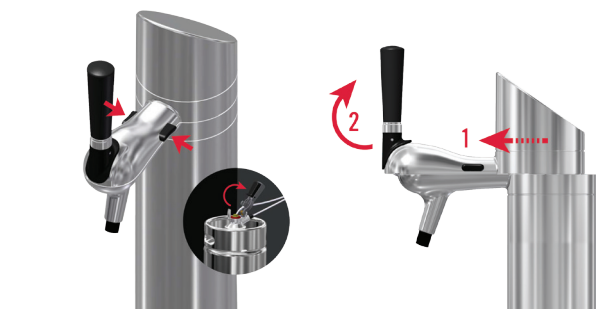




# FlexiDraft™

## REPLACING BEER LINE

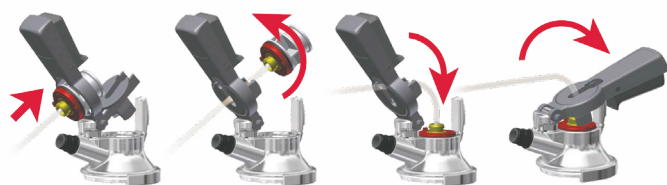
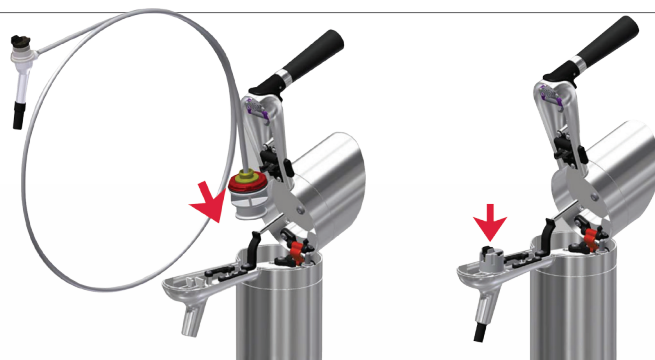


### STEP 1

Open the the FlexiDraft™ tower by pressing the two buttons. (Make sure the keg coupler is disconnected first.) The upper part will move forward by itself, then lift.

### STEP 2

Drop the keg coupler end of the one-way beer line into the tower column. Fix the beer outlet end to the faucet nozzle. Close the tower lid; it will snap securely into place.



### STEP 3

Push the beer end of the one-way line into the keg coupler. Place the keg coupler on the new keg and press the handle down to tap the keg.



Toll-Free: 1-866-327-4159  
[www.micromatic.com](http://www.micromatic.com)

#### West

19791 Bahama St.  
Northridge, CA 91324  
(818) 701-9765  
(818) 701-9844 Fax

#### Central

10726 North Second St.  
Machesney Park, IL 61115  
(815) 968-7557  
(815) 968-0363 Fax

#### Southeast

15111 Dispense Ln.  
Brooksville, FL 34604  
(352) 799-6331  
(352) 796-2429 Fax

#### Northeast

4601 Saucon Creek Rd.  
Center Valley, PA 18034  
(610) 625-4464  
(610) 625-4466 Fax

FOLLOW US:



01820-D0417 ©2017 Micro Matic USA, Inc. All Rights Reserved.  
Micro Matic reserves the right to change specifications without notice.