

EP-5957-BM

Center Pull Kraft Paper Dispenser, Bench Mount

usage instructions

IT IS THE RESPONSIBILITY OF THE CUSTOMER TO ENSURE THAT
ALL OPERATORS AND SERVICE PERSONNEL HAVE FULLY READ
AND UNDERSTOOD THIS DOCUMENT

**READ ALL INSTRUCTIONS BEFORE OPERATING TOOLS.
FAILURE TO FOLLOW ANY OF THESE GUIDELINES COULD
RESULT IN SERIOUS OR FATAL INJURY**



P (847) 735-8105 | F (847) 735-8297
sales@encorepack.com | www.encorepack.com



201 Park Avenue, Lake Villa, IL 60046
P.O. Box 595, Winnetka, IL 60093



IMPORTANT



PLEASE READ PRIOR TO USAGE

To ensure operator safety, it is important that all personnel use proper safety and handling procedures. This safety booklet is designed to educate operators on the safe use of the EP-5957-BM Center Pull Kraft Paper Dispenser, Bench Mount. All personnel must read and understand this booklet prior to using this product. Failure to follow any of the recommendations in this pamphlet can result in serious injury or death.

READ PRODUCT SAFETY LABELS

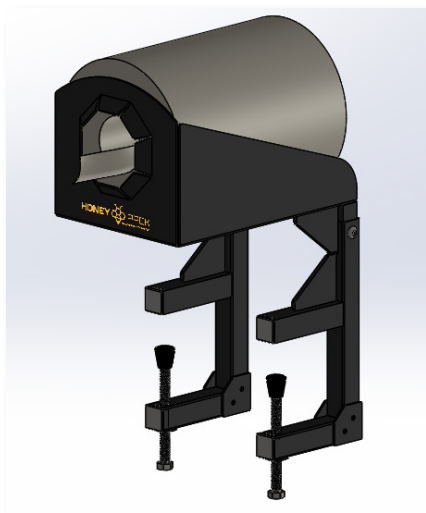
- Read and understand all safety labels on the tool
- Replace all damaged or missing labels

INSPECT THE TOOL DAILY AND REPLACE ALL WORN OR BROKEN PARTS. LUBRICATE ALL MOVING PARTS DAILY.

PRIOR TO USING UNIT, ALWAYS MAKE SURE THE UNIT IS TAUT AND SECURE TO TABLE. DO NOT USE IF UNIT IS LOOSE OR UNFASTENED TO TABLE.

READ THE INSTRUCTIONS

Before operating this tool, read, and understand all safety, operation, and maintenance information provided in the manual which is packaged with the tool. If you do not have a manual or need extra copies, please contact your Sales Representative.



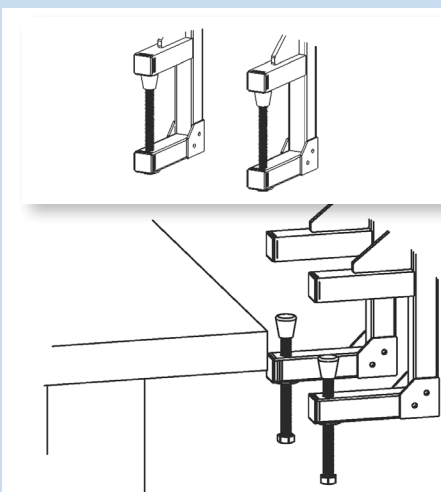
Terms & Conditions are found on our website: <https://www.encorepack.com/legal.php>

Please read our Terms & Conditions carefully prior to using or obtaining any materials, information products or services of **Encore Packaging LLC**, an Illinois limited liability company with a place of business at **201 Park Avenue, Lake Villa, IL 60046**.

P (847) 735-8105 | F (847) 735-8297  201 Park Avenue, Lake Villa, IL 60046
sales@encorepack.com | www.encorepack.com P.O. Box 595, Winnetka, IL 60093

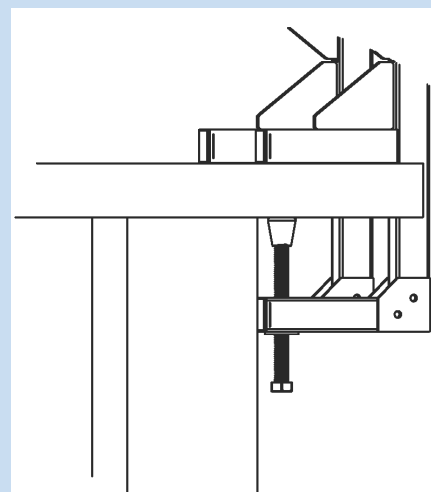
USAGE INSTRUCTIONS

Step 1



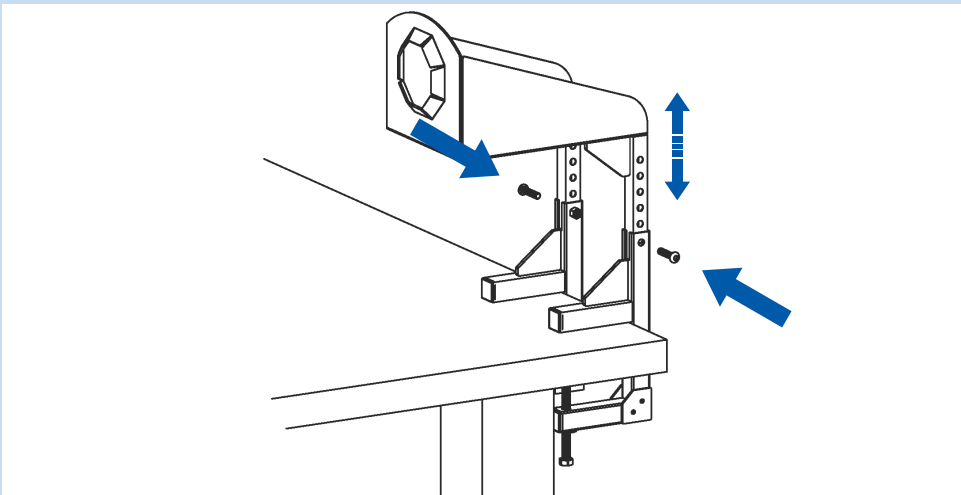
1. Loosen the two bolts (#3) to thickness of the work bench being used. Push onto the work bench once bolts are loose.

Step 2



2. Tighten the bolt to secure dispenser onto the work bench.

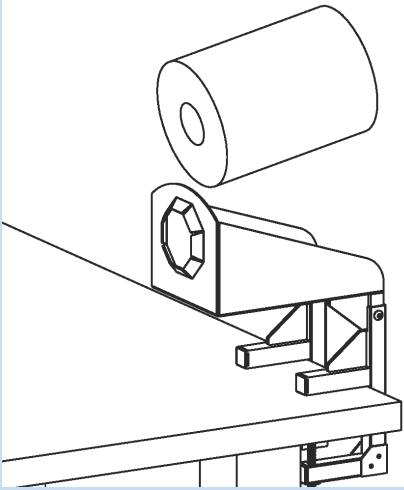
Step 3



3. The height of the dispenser can be adjusted by removing the two screws (#7) and sliding the chute up to the desired length. When chosen, secure in place by screwing in the two screws (#7) that were removed.

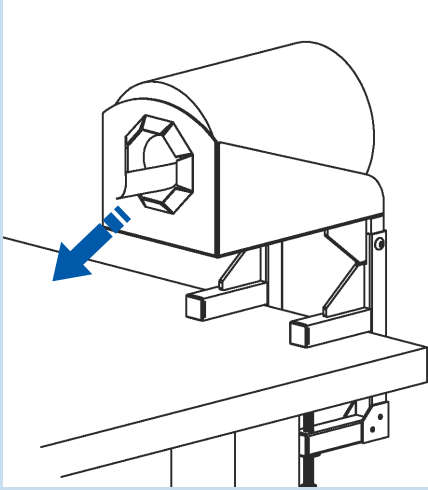
USAGE INSTRUCTIONS

Step 4



4. Once the dispenser is set up, put a roll onto the chute.

Step 5



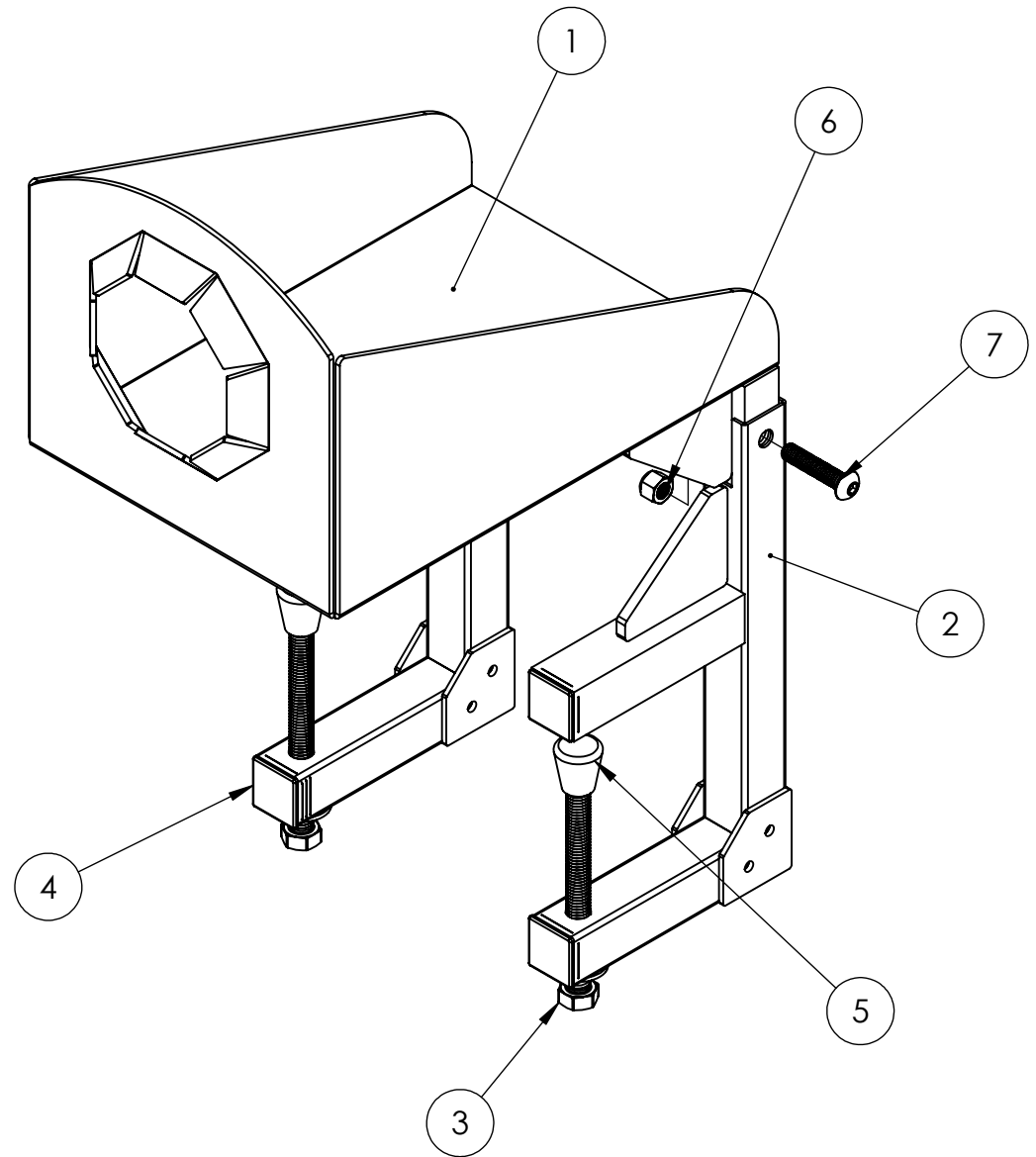
5. Pull paper from chute as needed.

This page have been intentionally left blank

EP-5957-BM

PARTS LIST

ITEM NO.	PART NUMBER	DESCRIPTION	QTY.
1	E5957-BM-01	Weldment	1
2	E5957-BM-02	Mounting Frame	2
3	E5957-BM-03	Bolt	2
4	E5957-BM-04	Cap	4
5	E768-06	Slip On Foot	2
6	E3065-19	3/8" Nylock Hex Nut	2
7	E5956-12	BHCS, 3/8-16 x 1-1/2"	2





P (847) 735-8105 | F (847) 735-8297
sales@encorepack.com | www.encorepack.com



201 Park Avenue, Lake Villa, IL 60046
P.O. Box 595, Winnetka, IL 60093