

EP-5955-15-BM-LW

Paper Crumpler, Bench Mount Low - 15"

usage instructions

IT IS THE RESPONSIBILITY OF THE CUSTOMER TO ENSURE THAT
ALL OPERATORS AND SERVICE PERSONNEL HAVE FULLY READ
AND UNDERSTOOD THIS DOCUMENT

**READ ALL INSTRUCTIONS BEFORE OPERATING TOOLS.
FAILURE TO FOLLOW ANY OF THESE GUIDELINES COULD
RESULT IN SERIOUS OR FATAL INJURY**



P (847) 735-8105 | F (847) 735-8297
sales@encorepack.com | www.encorepack.com



201 Park Avenue, Lake Villa, IL 60046
P.O. Box 595, Winnetka, IL 60093



IMPORTANT



PLEASE READ PRIOR TO USAGE

To ensure operator safety, it is important that all personnel use proper safety and handling procedures. This safety booklet is designed to educate operators on the safe use of the EP-5955-15-BM-LW Paper Crumpler, Bench Mount Low - 15". All personnel must read and understand this booklet prior to using this product. Failure to follow any of the recommendations in this pamphlet can result in serious injury or death.

READ PRODUCT SAFETY LABELS

- **Read and understand all safety labels on the tool**
- **Replace all damaged or missing labels**

INSPECT THE TOOL DAILY AND REPLACE ALL WORN OR BROKEN PARTS. LUBRICATE ALL MOVING PARTS DAILY.

PRIOR TO USING UNIT, ALWAYS MAKE SURE THE UNIT IS TAUT AND SECURE TO TABLE. DO NOT USE IF UNIT IS LOOSE OR UNFASTENED TO TABLE.

READ THE INSTRUCTIONS

Before operating this tool, read, and understand all safety, operation, and maintenance information provided in the manual which is packaged with the tool. If you do not have a manual or need extra copies, please contact your Sales Representative.



Terms & Conditions are found on our website: <https://www.encorepack.com/legal.php>

Please read our Terms & Conditions carefully prior to using or obtaining any materials, information products or services of **Encore Packaging LLC**, an Illinois limited liability company with a place of business at **201 Park Avenue, Lake Villa, IL 60046**.

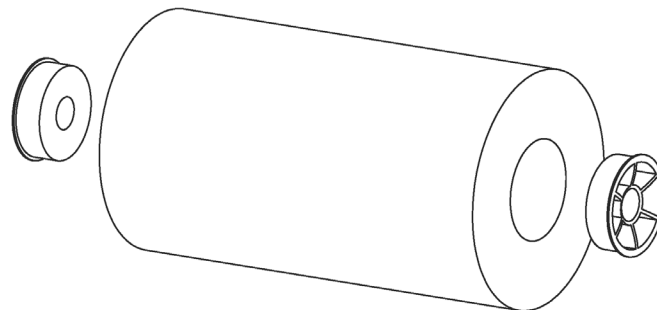
P (847) 735-8105 | F (847) 735-8297
sales@encorepack.com | www.encorepack.com



201 Park Avenue, Lake Villa, IL 60046
P.O. Box 595, Winnetka, IL 60093

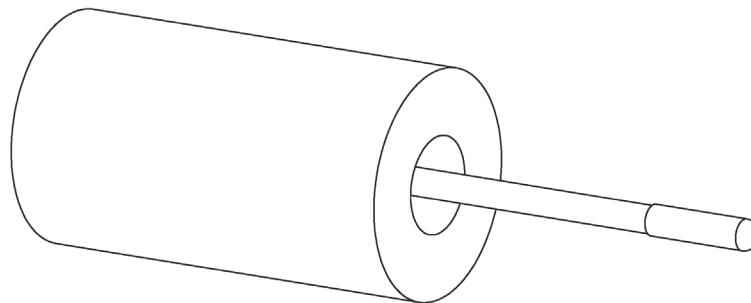
USAGE INSTRUCTIONS

Step 1



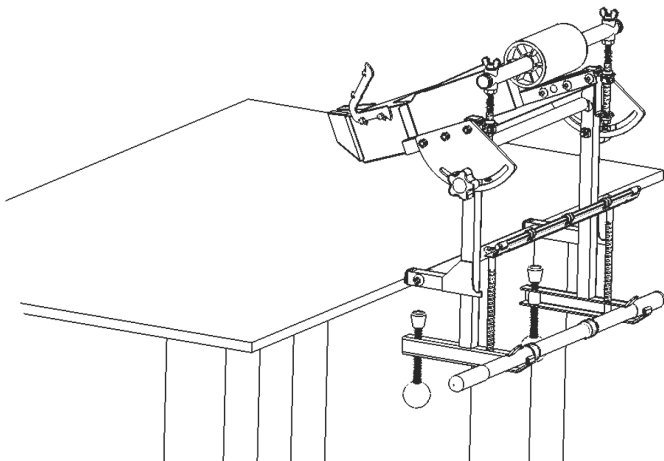
1. Remove plastic inserts from the kraft paper roll.

Step 2



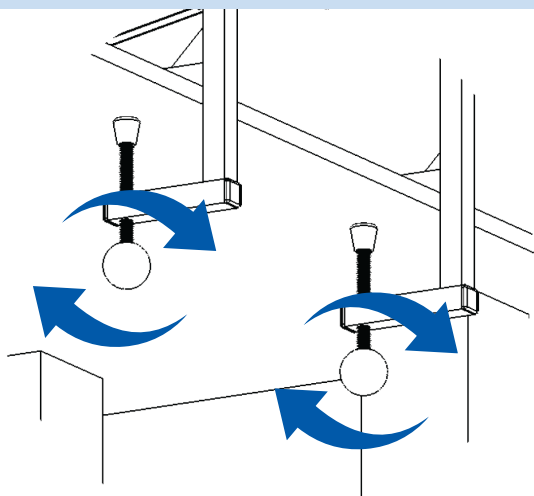
2. Insert the support tube into the kraft paper roll.

Step 3



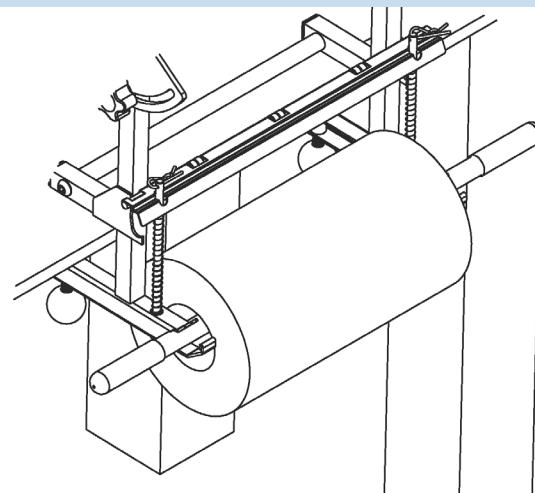
3. Slide the dispenser onto the table, up to the upright tube of the side support weldments so it is fully against the table.

Step 4



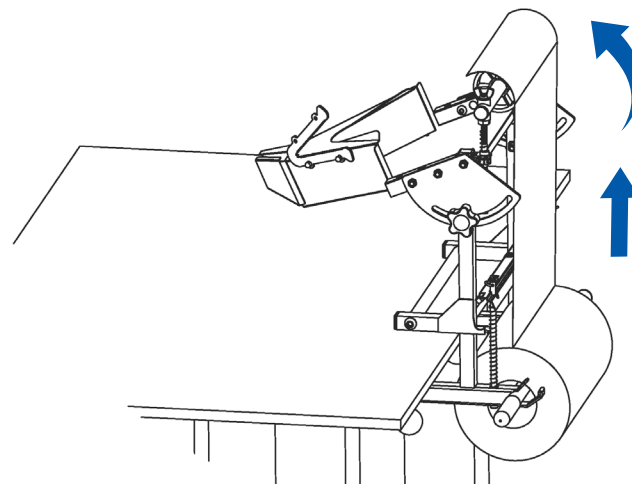
4. Tightly screw the ball knob handles up against the bottom of the table to securely mount the dispenser.

Step 5



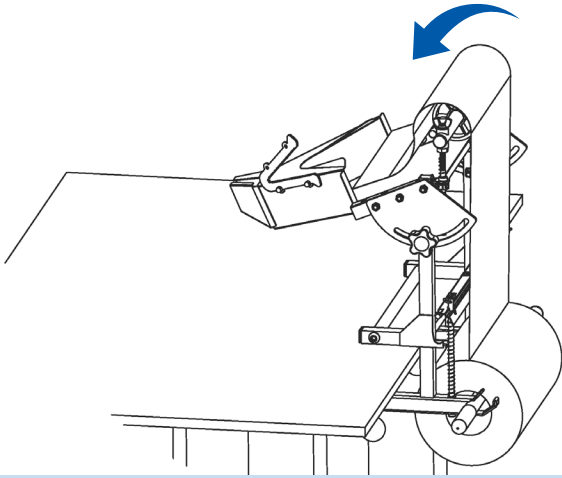
5. Attach the support tube with the kraft paper roll on to the EP-5955.

Step 6



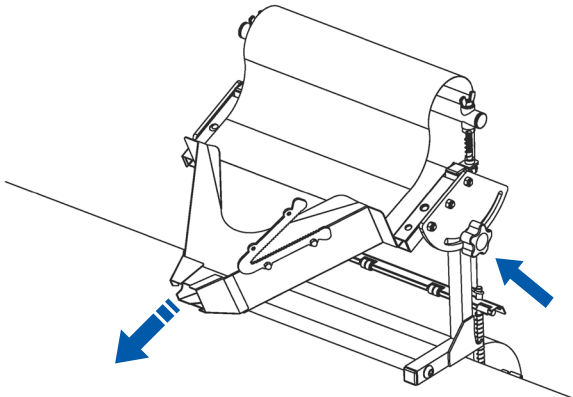
6. Pull kraft paper under the brake strip and over the PVC roller.

Step 7



7. Wrap kraft paper under the PVC roller and feed the paper towards the chute.

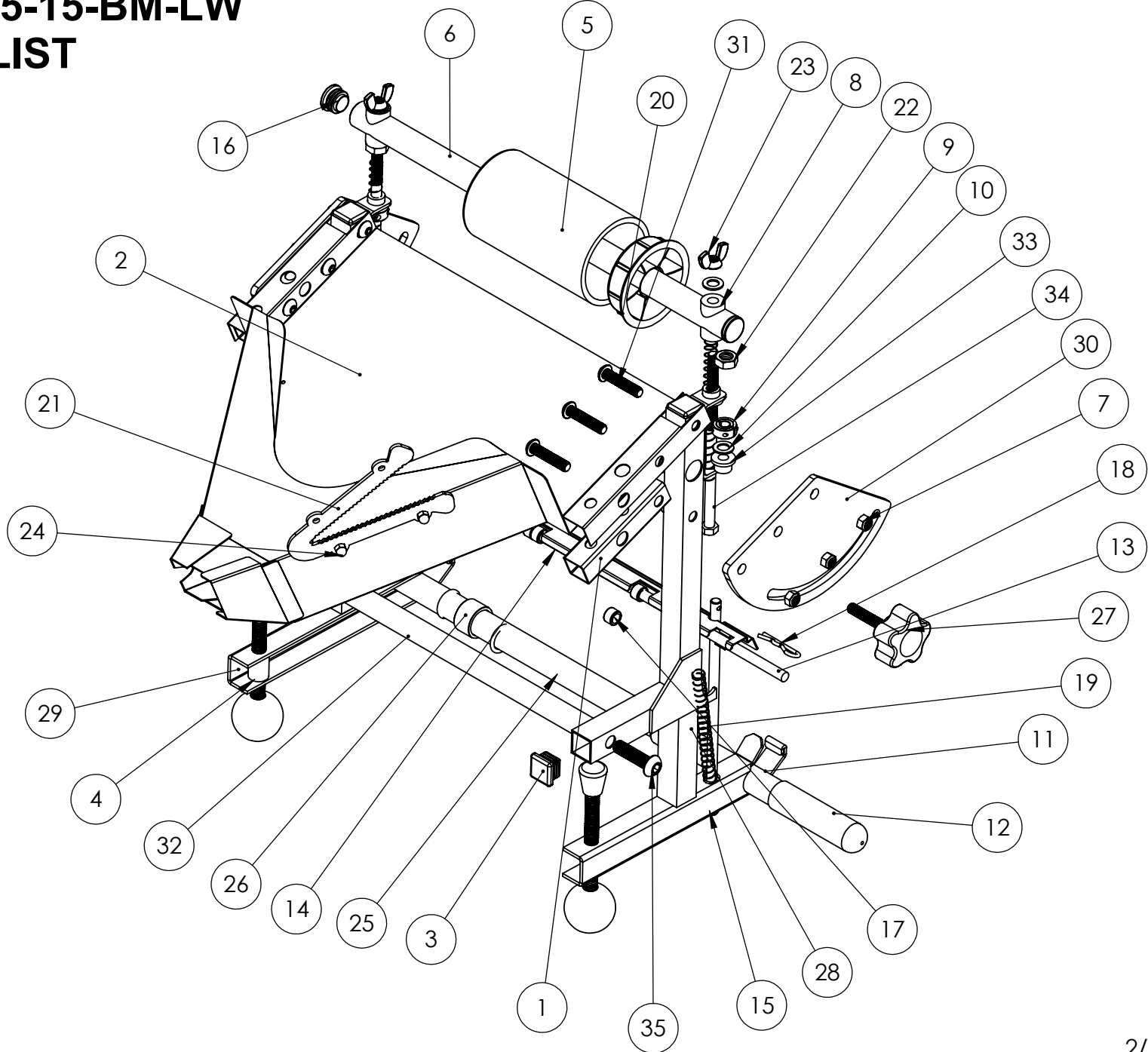
Step 8



8. Feed the paper through the chute and use the cutter to cut paper to desired length. Adjust the positioning of the dispenser as needed by unscrewing the pivot plate knob enough to swing the chute into the position needed then secure in place by screwing in the knob.

This page have been intentionally left blank

EP-5955-15-BM-LW
PART LIST



2/15/23 REV. A

EP-5955-15-BM-LW

Parts List

| ITEM NO. | PART NUMBER | DESCRIPTION | QTY. |
|----------|----------------|-------------------------------|------|
| 1 | E5956-06 | Crumpler Support Tube | 2 |
| 2 | E5950-20-15 | Paper Crumpler | 1 |
| 3 | E5920-09 | Square Tube Plug | 4 |
| 4 | E5955-15-BM-02 | Ball Knob Handle | 2 |
| 5 | E5955-07 | PVC Pipe | 1 |
| 6 | E5955-05 | 29" Tube | 1 |
| 7 | E1900-07 | Hex Nut | 6 |
| 8 | E5955-28 | Saddle Cap | 4 |
| 9 | E3075-08 | Shaft Collar | 2 |
| 10 | E5960-04 | Washer | 3 |
| 11 | E5950-06 | Support Tube | 1 |
| 12 | E800-06-J | Handle Grip | 2 |
| 13 | E5955-19 | Brake Strip Rod | 1 |
| 14 | E5955-30-15 | Brake Strip w/Bearing Indents | 1 |
| 15 | E5955-12-A | Spring Pin | 2 |
| 16 | E3080-10-A | 1" Tube Plug | 2 |
| 17 | E1150-12 | Gripper Foot Bearing | 6 |
| 18 | E6550-03-B | Cotter Pin | 2 |

| ITEM NO. | PART NUMBER | DESCRIPTION | QTY. |
|----------|------------------|-------------------------|------|
| 19 | E5955-22 | Compression Spring | 4 |
| 20 | E5955-04 | 3" Plastic Cap Insert | 2 |
| 21 | E5950-21 | Cutter Blade | 1 |
| 22 | E830-05 | Hex Nut | 2 |
| 23 | E5955-24 | Nylon Wing Nut | 2 |
| 24 | E5955-10 | Cap Nut | 2 |
| 25 | E800-04 | "O" Ring | 4 |
| 26 | E5955-15 | Roller Bearing | 2 |
| 27 | E5956-01 | Pivot Plate Knob Handle | 2 |
| 28 | E5955-15-BM-01-R | Right Support Weldment | 1 |
| 29 | E5955-15-BM-01-L | Left Support Weldment | 1 |
| 30 | E5956-03 | Pivot Plate | 2 |
| 31 | E5956-12 | BHCS, 3/8-16 x 1-1/2" | 6 |
| 32 | E5956-02 | Joining Tube | 1 |
| 33 | E5956-10 | Bushing | 4 |
| 34 | E5956-07 | HHS, 3/8-16 x 7-1/2 | 2 |
| 35 | E5956-08 | BHCS, M12 x 45mm | 2 |



P (847) 735-8105 | F (847) 735-8297
sales@encorepack.com | www.encorepack.com



201 Park Avenue, Lake Villa, IL 60046
P.O. Box 595, Winnetka, IL 60093