

## EP-3100

*Premium Strapping Dispenser for Steel or Poly Strapping*

### *loading instructions*

IT IS THE RESPONSIBILITY OF THE CUSTOMER TO ENSURE THAT  
ALL OPERATORS AND SERVICE PERSONNEL HAVE FULLY READ  
AND UNDERSTOOD THIS DOCUMENT

**READ ALL INSTRUCTIONS BEFORE OPERATING TOOL.  
FAILURE TO FOLLOW ANY OF THESE GUIDELINES COULD  
RESULT IN SERIOUS OR FATAL INJURY**



P (847) 735-8105 | F (847) 735-8297  
sales@encorepack.com | www.encorepack.com



201 Park Avenue, Lake Villa, IL 60046  
P.O. Box 595, Winnetka, IL 60093



## IMPORTANT



PLEASE READ PRIOR TO LOADING

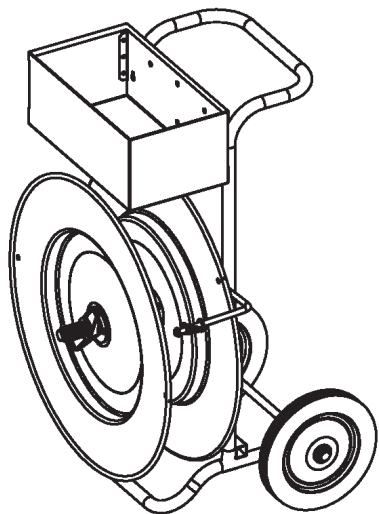
To ensure operator safety, it is important that all personnel use proper safety and handling procedures. This safety booklet is designed to educate operators on the safe use of the EP-3100 Premium Strapping Dispenser for Steel or Poly Strapping. All personnel must read and understand this booklet prior to using this product. Failure to follow any of the recommendations in this pamphlet can result in serious injury or death.

### READ PRODUCT SAFETY LABELS

- Read and understand all safety labels on the tool
- Replace all damaged or missing labels

### READ THE INSTRUCTIONS

Before operating this tool, read, and understand all safety, operation, and maintenance information provided in the manual which is packaged with the tool. If you do not have a manual or need extra copies, please contact your Sales Representative. Tool must be inspected for wear and tear on a daily basis with proper daily documentation.



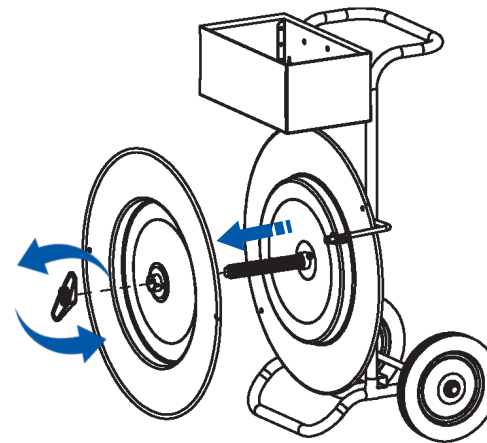
Terms & Conditions are found on our website: <https://www.encorepack.com/legal.php>

Please read our Terms & Conditions carefully prior to using or obtaining any materials, information products or services of **Encore Packaging LLC**, an Illinois limited liability company with a place of business at **201 Park Avenue, Lake Villa, IL 60046**.

P (847) 735-8105 | F (847) 735-8297  201 Park Avenue, Lake Villa, IL 60046  
sales@encorepack.com | www.encorepack.com P.O. Box 595, Winnetka, IL 60093

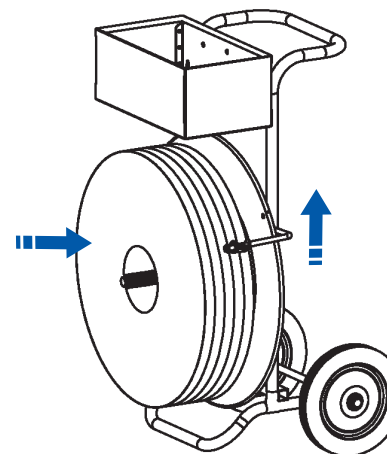
## LOADING INSTRUCTIONS

### Step 1



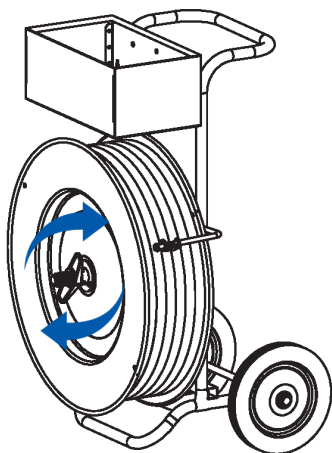
1) Make sure the unit is standing upright. Twist off the wing nut and remove the front disk.

### Step 2



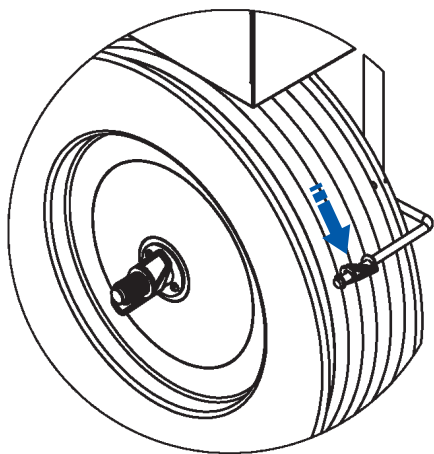
2) Lift brake arm and load poly roll onto the spindle.

### Step 3



3) Release brake arm and reload the front disk. Twist the wing nut back onto the spindle. Make sure the strap is secured between the two disks.

### Step 4



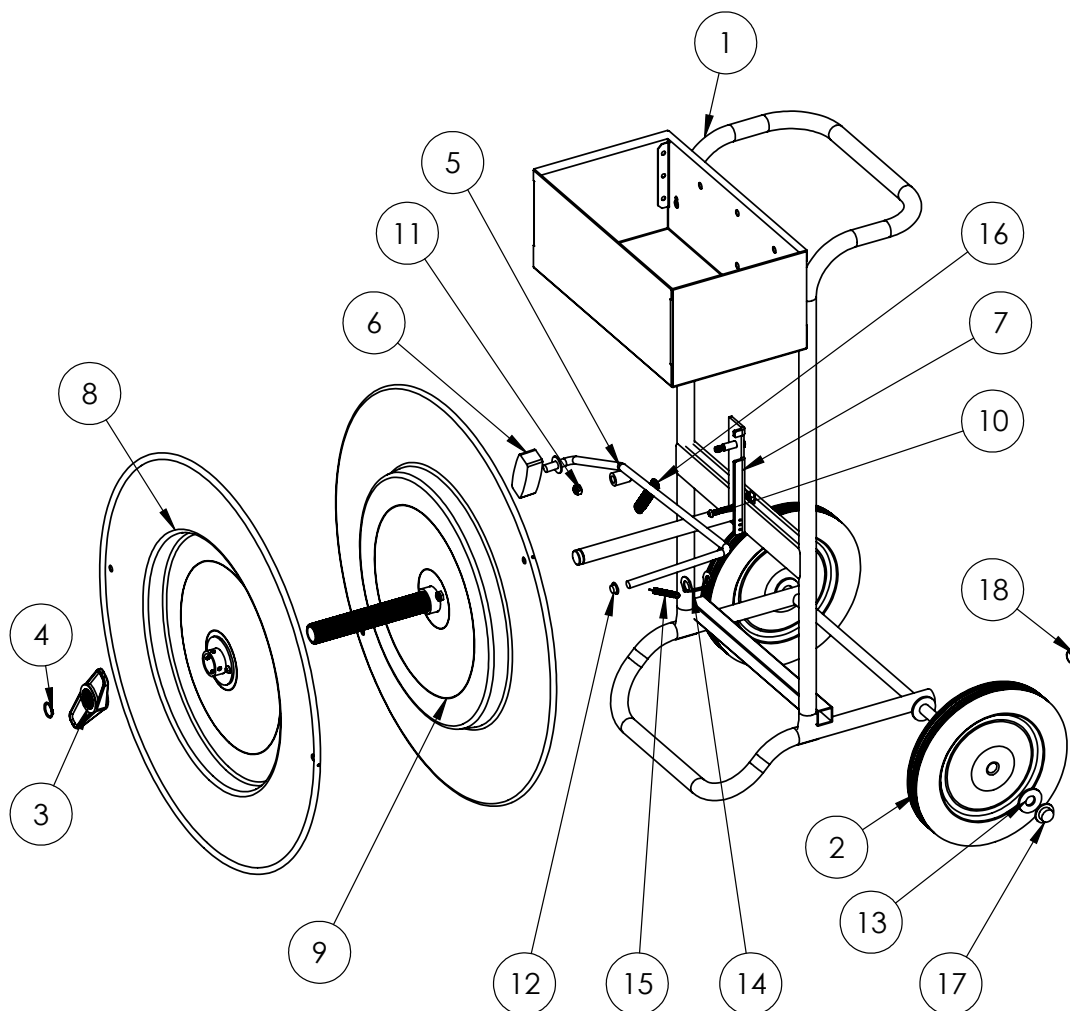
4) Feed strap through the brake arm. Dispense as needed.

*This page have been intentionally left blank*

# EP-3100

## Parts List

ITEM NO.	PART NUMBER	DESCRIPTION	QTY.
1	E3100-01	Frame Assembly	1
2	E3100-01-A	10" Wheel	2
3	E3100-02	Wing Nut	1
4	E3100-03	Retaining Ring	1
5	E3100-04	Brake Arm Assembly	1
6	E3100-04-M-1	Brake Shoe	1
7	E3100-05	Bracket Weldment	1
8	E3100-12-F	Front Disk Assembly	1
9	E3100-12-R	Rear Disk Assembly	1
10	E745-07-A	Bumper Bolt	2
11	E1900-07	Hex Nut	3
12	E3040-04-F	Cap Nut	1
13	E3080-02	Wheel Washer	4
14	E3080-04-B	Strap Guide	1
15	E3080-04-E	Bracket Spring	1
16	E3080-05	Extension Spring	1
17	E3080-06	Axle Cap Nut	2
18	E3080-10-A	1" Tube Plug	2



8/6/24 REV. D





P (847) 735-8105 | F (847) 735-8297  
sales@encorepack.com | www.encorepack.com



201 Park Avenue, Lake Villa, IL 60046  
P.O. Box 595, Winnetka, IL 60093