

# INSTRUCTION SHEET 236738 FOR STACKING KIT E33T - H10/P10 TO FIT E33T OVENS TO H10 / P10 HOLDING CABINETS



**SERVICE WORK ONLY TO BE CARRIED OUT BY QUALIFIED PERSONS**

Suitable for the following models:

For fitting E33T Ovens to H10 / P10 Holding Cabinets.

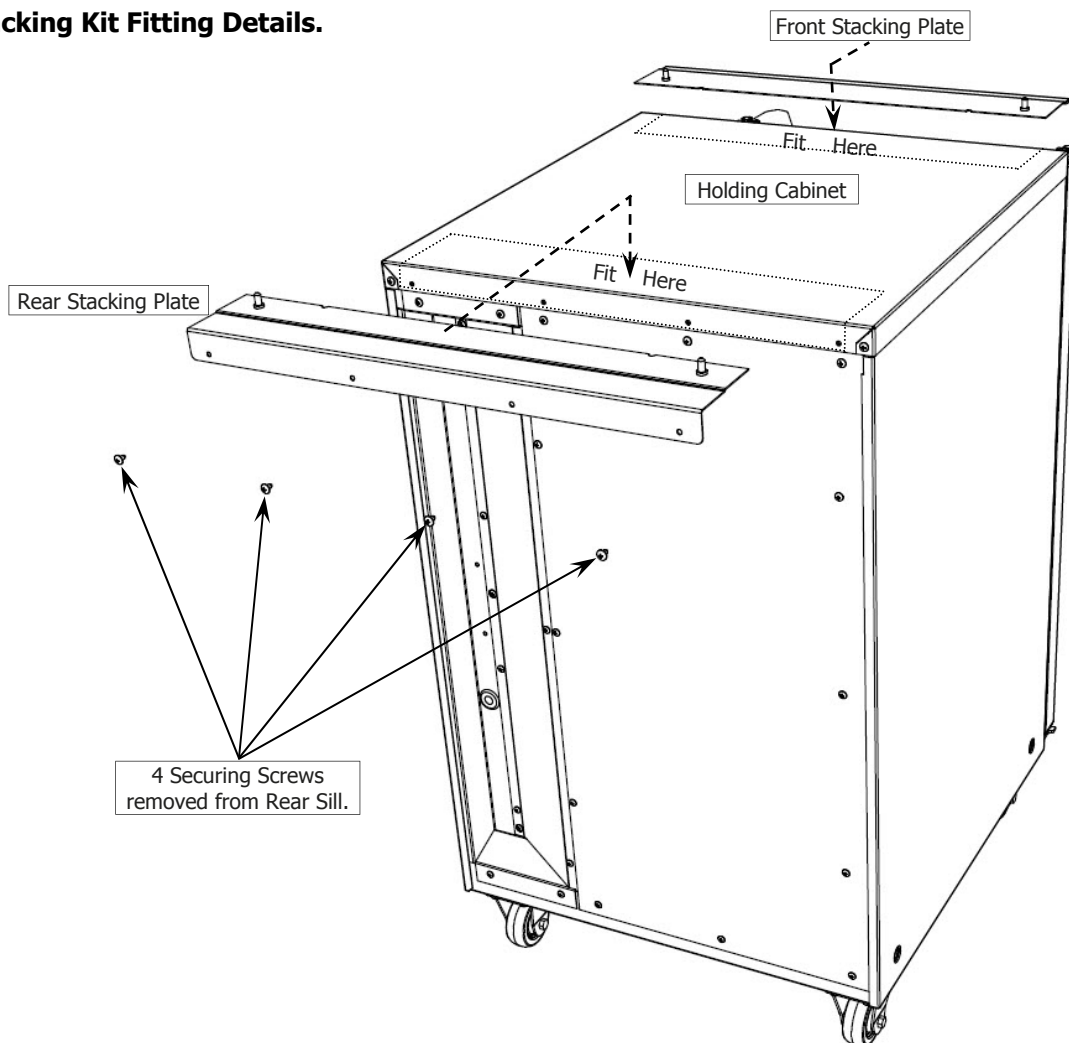
Contents:

Stacking Plate Rear Qty 1.  
Stacking Plate Front Qty 1.  
VHB Foam Tape Qty 0.32m

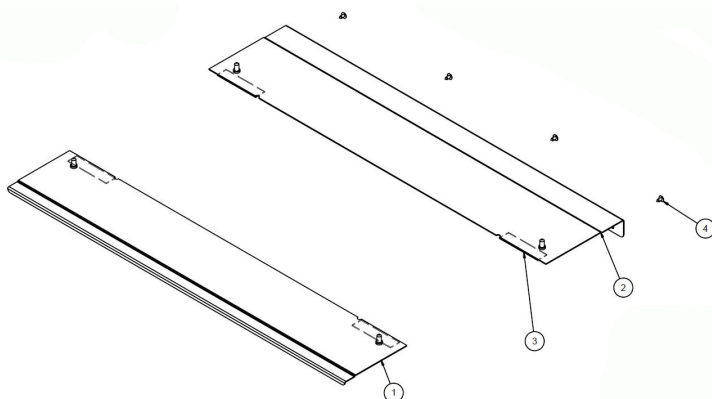


Packed By:-	
Initial	Date

## Stacking Kit Fitting Details.



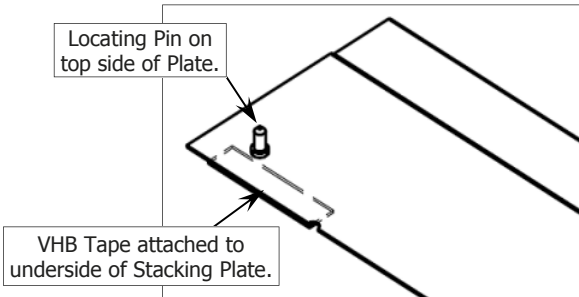
## Parts List for Stacking Kit DSKE33TH10P10



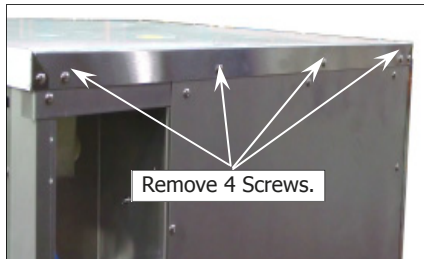
Item No.	Part No.	Item	Qty
1	236618	Stacking Plate Front (Not McD)	1
	236743	Stacking Plate Front (Mc D Only)	1
2	236619	Stacking Plate Rear	1
3	233317	VHB Foam Tape GP 5962	0.32m
4	041045	Screw 8 x 3/8" Truss Philips N/P	4

**To fit the Stacking Kit to the E33T Oven / H10-P10 Holding Cabinets, carry out the following:-**

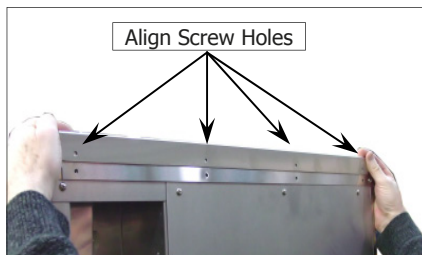
1. Remove front and rear Stacking Plates from packaging.



2. Peel off protective plastic from Holding Cabinet top cover panel and from front and rear stacking plates.

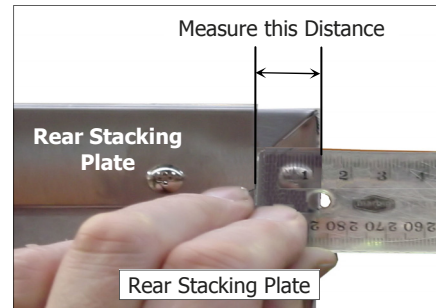


3. Remove 4 screws from top rear of Holding Cabinet.
4. Remove backing film from VHB Tape fitted to Rear Stacking Plate.

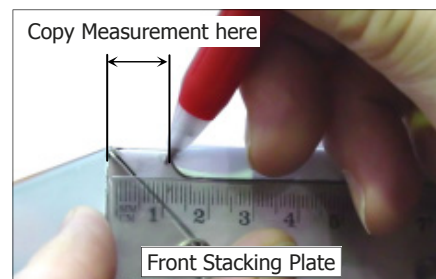


5. Align screw holes in Rear Stacking Plate with screw holes in rear of Holding Cabinet and secure in place with 4 screws.
6. Press down on top of stacking plate to ensure VHB Tape makes good contact with top of Holding Cabinet .

7. Measure distance from edge of Rear Stacking Plate to edge of Holding Cabinet .

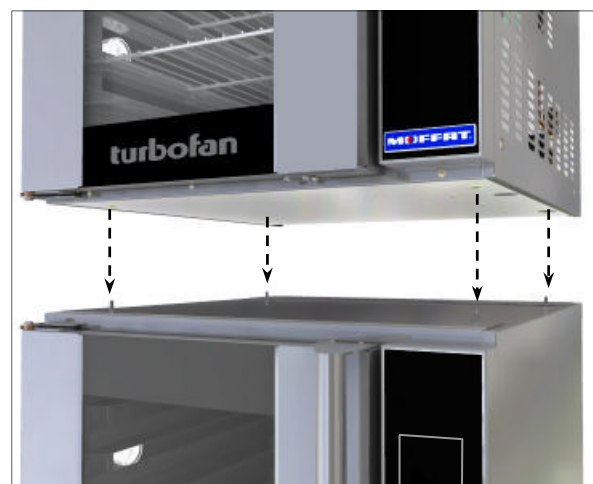


8. Place Front Stacking Plate on front top edge of Holding Cabinet and mark measurement taken at Item 7, to ensure Front and Rear Stacking Plates are aligned correctly.



9. Remove backing film from VHB Tape fitted to Front Stacking Plate.
10. Align Front Stacking Plate with measurement made at top front of Oven.
11. Push Front Stacking Plate hard against the front face of Holding Cabinet and press down to securely attach Front Stacking Plate to top front of Holding Cabinet.
12. Lift Oven and locate onto Locating Pins on Front and Rear Stacking Plates fitted to top of Holding Cabinet.

Oven



Holding Cabinet