

# Electronic Faucet 1500T & 1501T Series

TECK®



Specification: (example)

- **Battery** (4 'C' cell) or **Hardwire** (24 VAC) infrared electronic handwash system
- H<sub>2</sub>OPTICS™ technology – no external adjustments required
- Chrome plated one piece cast main body with integral sensor and rigid spout
- Adjustable sensing range and timeout
- Audible low battery indicator
- Forged brass solenoid valve (control box No. 0 only)
- Tempered water supplied to solenoid valve, (except control box options No. 0 and 1)

and... with... (specify battery or hardwire)  
with... (add spout required)  
with... (add outlet required)  
with... (add control box required)  
with... (transformer - specify separately - See Back Page)



H<sub>2</sub>OPTICS™

1501T3470

Engineer/Architect Approval







Model Specified:

Approval:

Date:

DESCRIPTION	PRODUCT NO.
Hardwire	1500T3
Battery Operated	1501T3



SPOUT & SENSOR	OUTLET	CONTROL BOX
0 <input type="checkbox"/>	0 <input type="checkbox"/>	0 Base Model with Surface Mount Housing* SEE Specification Drawing #9 <input type="checkbox"/>
1 <input type="checkbox"/>	1 <input type="checkbox"/>	1 For RECESSED MOUNTING Components ASSEMBLED in 10" Box w/S/S Cover.* SEE Specification Drawing #10 <input type="checkbox"/>
2 <input type="checkbox"/>	2 Vandal Resistant 1.5 USGPM (5.7 L/min.) Laminar w/Agion® Antimicrobial  <input type="checkbox"/>	2 <input type="checkbox"/>
3 (R5) Single Hole Deckmount Gooseneck Spout with Integral Sensor in Base (1)  <input type="checkbox"/>	3 Vandal Resistant 1.5 USGPM (5.7 L/min.) Flow Control Aerator  <input type="checkbox"/>	3 <input type="checkbox"/>
4 (R5) Deckmount Gooseneck Spout with Integral Sensor in Base and 4" Forged Coverplate (1)  <input type="checkbox"/>	4 <input type="checkbox"/>	4 <input type="checkbox"/>
5 (R5) Deckmount Gooseneck Spout with Integral Sensor in Base and 8" Forged Coverplate (1)  <input type="checkbox"/>	5 <input type="checkbox"/>	5 <input type="checkbox"/>
6 <input type="checkbox"/>	6 <input type="checkbox"/>	6 For RECESSED MOUNTING Components & Mechanical Mixing Valve (2) ASSEMBLED in 10" Box w/S/S Cover. SEE Specification Drawing #11 <input type="checkbox"/>
7 <input type="checkbox"/>	7 Smooth End, Laminar Flow Control in Base of Gooseneck Spout 1.1 USGPM (4.2L/min.)  <input type="checkbox"/>	7 <input type="checkbox"/>
8 <input type="checkbox"/>	8 <input type="checkbox"/>	8 For RECESSED MOUNTING Components & Thermostatic Mixing Valve ASSEMBLED in 10" Box w/S/S Cover. SEE Specification Drawing #12 <input type="checkbox"/>
9 <input type="checkbox"/>	9 <input type="checkbox"/>	9 <input type="checkbox"/>

\* **Mixing Valve** supplied by others.

Flowrates are at 60 PSI.

(1) No Optional Spouts Available. (2) With Thermostatic Limit Stop.

Refer to [www.specselect.com](http://www.specselect.com) for individual models.

Note: Use this page front and back, with specification drawing page referenced above, as product submittal sheets.

Delta reserves the right (1) to make changes in specifications and materials, and (2) to change or discontinue models, both without notice or obligation. Dimensions are for reference only. See current full-line price book or [www.specselect.com](http://www.specselect.com) for finish options and product availability.

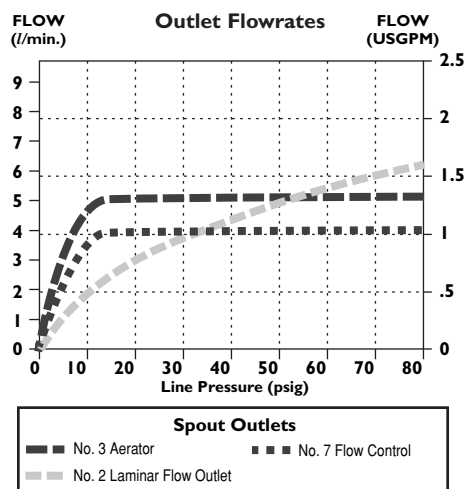
## Approvals:

- CSA certified
- Complies to ASME A112.18.1
- ADA Compliant and meets Handicapped Accessibility Standard ASME A117.1 of less than 5 lbs. handle operating force.
- IAPMO listed
- Control Box Option 6 Mechanical Mixing Valve CSA certified
- Control Box Option 8 Thermostatic Mixing Valve CSA certified and meets ASSE 1016 and 1017

(Contact Delta Representative for State and/or Local Approvals.)

U.S. Patent #6, 826, 455.

## FLOWRATE vs PRESSURE



## OPERATION:

- Hands free (touchless) operation.
- Water flows when sensor is activated.
- Water flow stops upon de-activation of sensor.
- Auto shut-off feature that is selectable between 15 to 75 seconds. Factory set to 45 seconds. Will reset once obstruction is removed.
- Adjustable sensing distance 76 to 381mm (3" to 15") factory set to 229mm (9") (+/- 1.0")
- Low battery audible beep (for battery models only) will activate after faucet shuts off when approximately 1500 cycles remain.

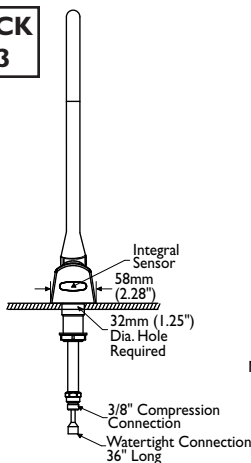
**NOTE:** For optimum performance of this product, we recommend a system pressure between 20 and 80 PSI static. This product will operate up to a maximum of 125 PSI static per ANSI and CSA requirements. However, we do not recommend pressures above 80 PSI. Thermal expansion or leaking pressure reducing valves may require use of expansion tanks or relief valves to ensure your system never exceeds its maximum intended pressure setting.

## GOOSENECK SPOUT ASSEMBLIES

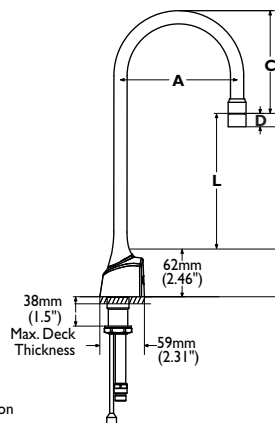
Spout/Outlet	"A"		"C"		"L"	
	mm	in.	mm	in.	mm	in.
Gooseneck-Standard (R5) for Outlet #2 and 3	152	6	124	4.9	188	7.4
Gooseneck-Standard (R5) for Outlet #7	152	6	117	4.6	196	7.7

Note: Measurements may vary  $\pm 6$ mm (0.25")

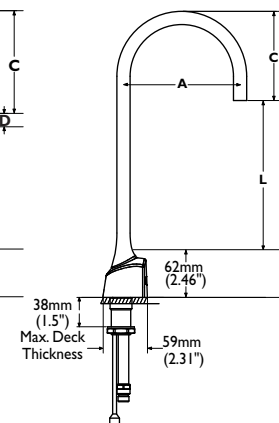
### GOOSENECK SPOUT #3



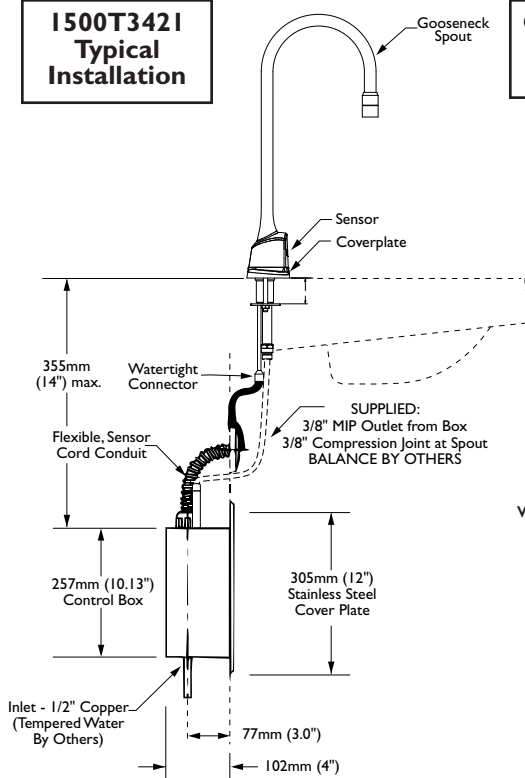
with Outlet #2 and 3



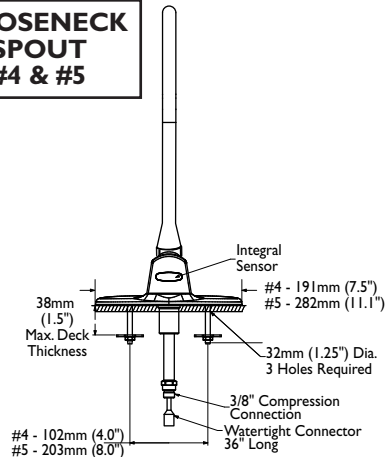
with Outlet #7



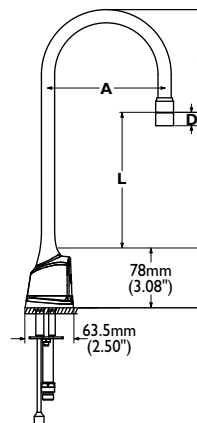
### 1500T3421 Typical Installation



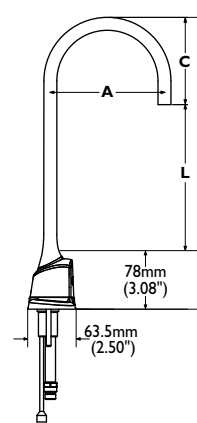
### GOOSENECK SPOUT #4 & #5



with Outlet #2 and 3



with Outlet #7



OUTLET NO.	"D"	
	mm	in.
2	18	0.69
3	18	0.69

## 1500T & 1501T ELECTRONIC FAUCET OPTIONAL ACCESSORIES:

✓	<b>TRANSFORMERS:</b>	
	060704A	110 to 24VAC Class II 20VA (Up to 5 Electronic Valves)
	060771A	110 to 24VAC Class II 40VA (Up to 10 Electronic Valves)
	060772A	110 to 24VAC Class II 100VA (Up to 25 Electronic Valves)
✓	<b>CORDS:</b>	
	060690A	36" Cable Extension

Refer to [www.specselect.com](http://www.specselect.com) for individual models.

Product supplied as shown by solid lines. All items shown by dotted lines supplied by others.

## COMPONENTS ONLY UNASSEMBLED

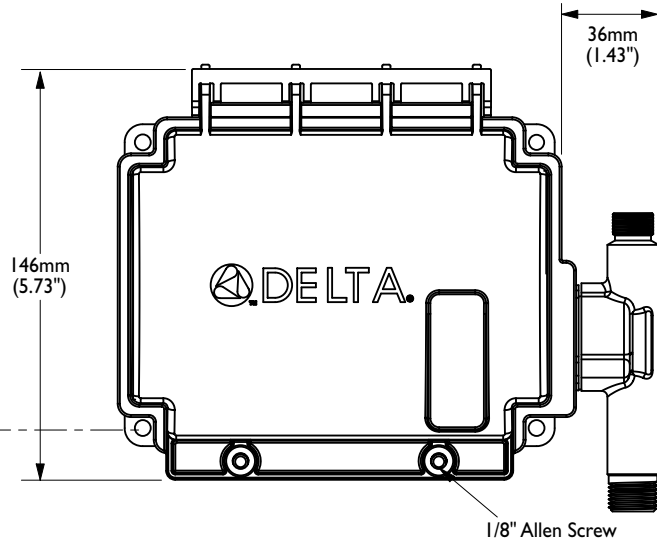
### I500T AND I501T SERIES

✓	PRODUCT NO.				VALVE TYPE	COVER
	I500T	3		0	Deckmount Handwash Hardwire	Surface Mounted, Vandal Proof Control Housing
	I501T	3		0	Deckmount Handwash Battery	Surface Mounted, Vandal Proof Control Housing

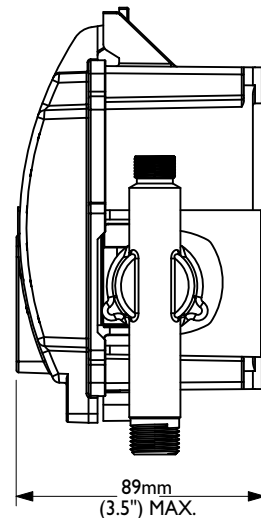
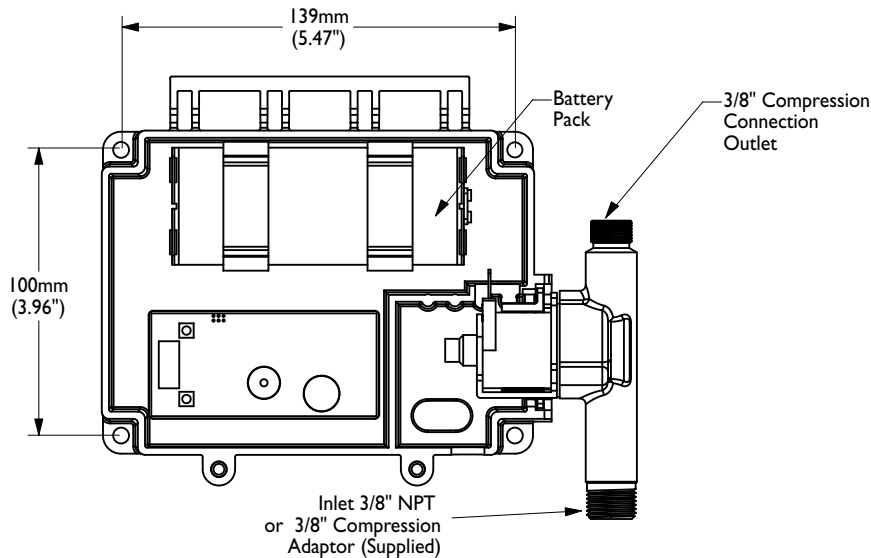
### I500T and I501T SERIES

Battery Operated box shown.  
Hardwire Version comes  
complete with Watertight  
Connector and Hardwire  
Converter 24VAC to 6VDC.

Recommended  
381mm (15" max.)  
to top of counter

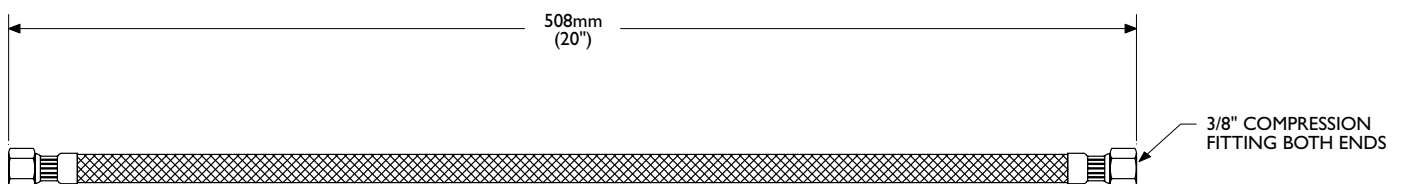


**VANDAL PROOF  
SURFACE MOUNT  
CONTROL HOUSING**



Note: Stainless Steel hose connection supplied  
between Solenoid Valve and Spout

**S/S HOSE**



Note: Measurements may vary  $\pm 6\text{mm}$  (0.25")

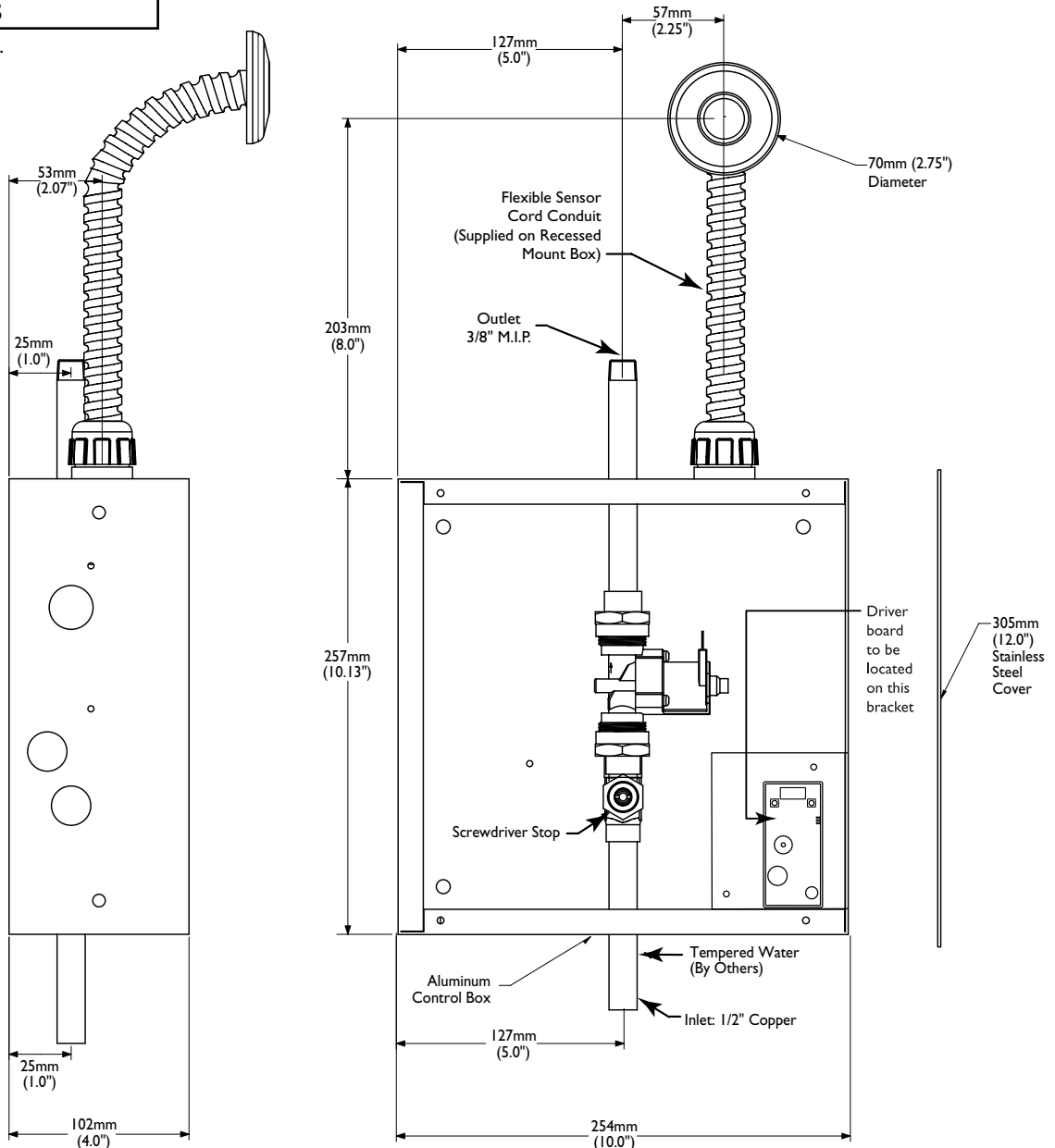
## TEMPERED WATER - ASSEMBLED CONTROL BOX

### I500T AND I501T SERIES

✓	PRODUCT NO.					FAUCET TYPE	MOUNT TYPE	COVER	
	*I500T	3			I	Deckmount Handwash Hardwire	Recessed Mount	305mm (12")	Stainless Steel
	*I501T	3			I	Deckmount Handwash Battery	Recessed Mount	305mm (12")	Stainless Steel
*This product is supplied with Flexible Sensor Cord Conduit on Recessed Mount Installations.									

#### I500T and I501T SERIES

Battery Operated box shown.  
Hardwire Version comes complete with Watertight Connector and Hardwire Converter 24VAC to 6VDC.



Note: For wallhung sink installations, sensor conduit rough-in should be directly under basin to minimize sensor cord exposure.

Note: Measurements may vary  $\pm 6\text{mm}$  (0.25")

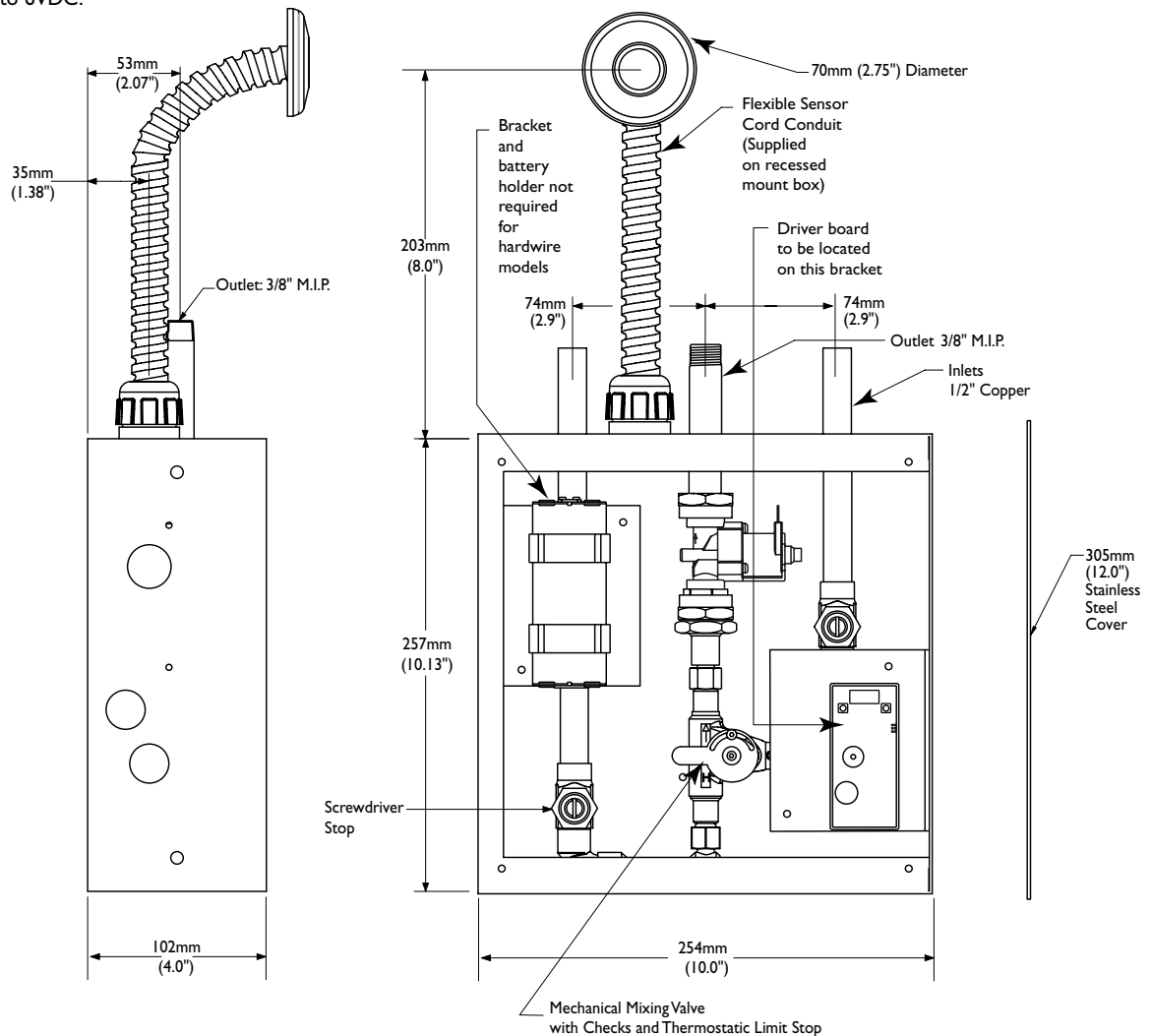
## MECHANICAL MIXING VALVE ASSEMBLED CONTROL BOX

### 1500T AND 1501T SERIES

✓	PRODUCT NO.				FAUCET TYPE	MOUNT TYPE	COVER	
	*1500T	3		6	Deckmount Handwash Hardwire	Recessed Mount	305mm (12")	Stainless Steel
	*1501T	3		6	Deckmount Handwash Battery	Recessed Mount	305mm (12")	Stainless Steel
*This product is supplied with Flexible Sensor Cord Conduit on Recessed Mount Installations.								

### 1500T and 1501T SERIES

Battery Operated box shown.  
Hardwire Version comes  
complete with Watertight  
Connector and Hardwire  
Converter 24VAC to 6VDC.



Note: For wallhung sink installations, sensor conduit rough-in should be directly under basin to minimize sensor cord exposure.

Note: Measurements may vary  $\pm 6\text{mm}$  (0.25")

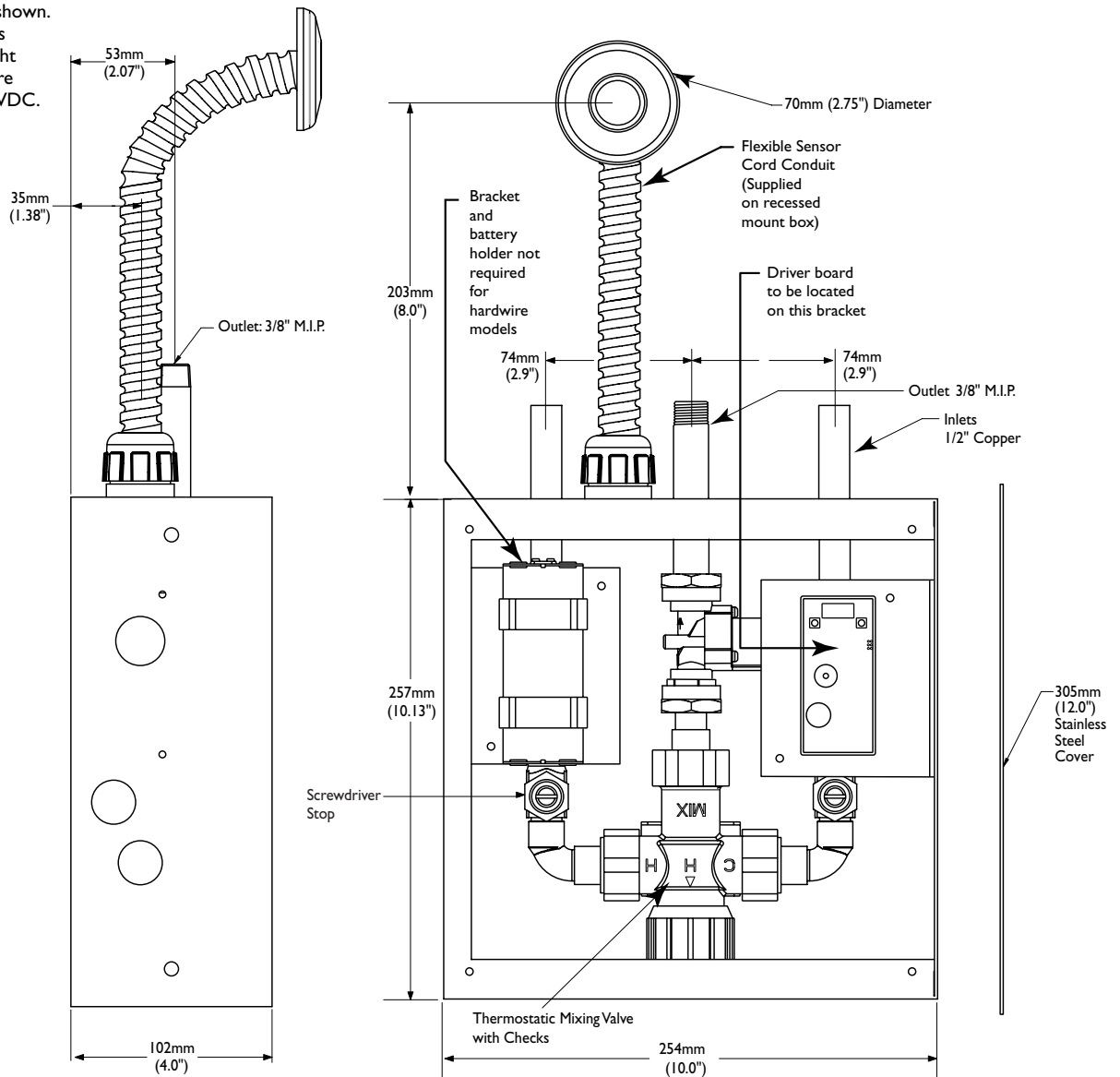
# THERMOSTATIC MIXING VALVE ASSEMBLED CONTROL BOX

## 1500T AND 1501T SERIES

✓	PRODUCT NO.				FAUCET TYPE	MOUNT TYPE	COVER	
	*1500T	3		8	Deckmount Handwash Hardwire	Recessed Mount	305mm (12")	Stainless Steel
	*1501T	3		8	Deckmount Handwash Battery	Recessed Mount	305mm (12")	Stainless Steel
*This product is supplied with Flexible Sensor Cord Conduit on Recessed Mount Installations.								

### 1500T and 1501T SERIES

Battery Operated box shown.  
Hardwire Version comes complete with Watertight Connector and Hardwire Converter 24VAC to 6VDC.



Note: For wallhung sink installations, sensor conduit rough-in should be directly under basin to minimize sensor cord exposure.

Note: Measurements may vary  $\pm 6\text{mm}$  (0.25")