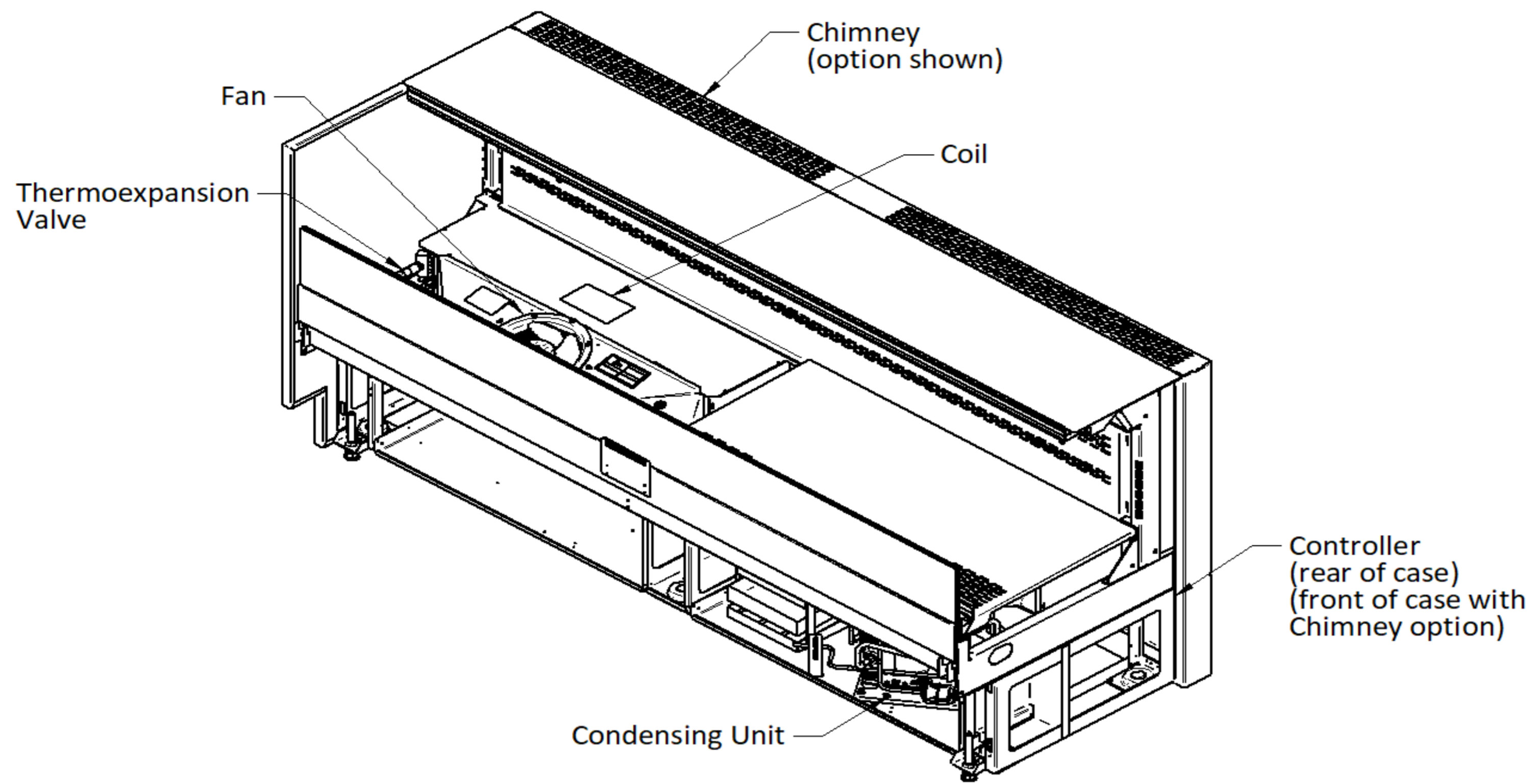


COVERS MODELS:  
FS-OB-1017-70A

October 2025

**DOE 2017**  
Energy Efficiency  
Compliant


**NSF Certification**  
This merchandiser model is manufactured to meet NSF/ANSI (National Sanitation Foundation) Standard #7 requirements for construction, materials and cleanability.



Intertek



Intertek



Scan the QR code with your mobile device to access additional product information or order parts.

Parts may also be ordered at:  
**parts.husmann.com**  
Call toll free: 1.855.487.7778

We reserve the right to change or revise specifications and product design in connection with any feature of our products. Such changes do not entitle the buyer to corresponding changes, improvements, additions or replacements for equipment previously sold or shipped.



REFRIGERATION DATA & DEFROST			
Model	Data Type	T1 Deli	T2 Deli
FS-OB-1017-70A	Setpoint [°F]	29	27
	Differential [°F]	6	6
	Avg Discharge Air [°F]	27-28	23-24
	Discharge Velocity [fpm]	20-55	20-55
	Avg Evap [°F]	19-20	17-18
	Conventional Load [BTUH]	2932	3372
	Frequency [# per day]	6	6
	Off Time [min]	35	35
	Termination [°F]	48	48

**Revision History**

Revision A: 7/03/2025:  
Original Issue.  
Rev B: 10/28/25

PHYSICAL			
DIMENSIONS <small>in. (mm)</small>		SHELVES	
Length <small>in. (mm)</small>	<b>71.25 (1810)</b>	Shelf Area <small>ft<sup>2</sup> (m<sup>2</sup>)</small>	<b>2.8 (0.26)</b>
Depth <small>in. (mm)</small>	<b>24.13 (613)</b>	Usable Cube <small>ft<sup>3</sup> (m<sup>3</sup>)</small>	<b>8.6 (0.24)</b>
Height <small>in. (mm)</small>	<b>32.50 (826)</b>	Rows Min. Count	<b>0</b>
		Rows Max. Count	<b>1</b>
		Slant <small>(degrees)</small>	<b>5</b>
		Shelf Depths <small>in. (mm)</small>	<b>6 (152)</b>

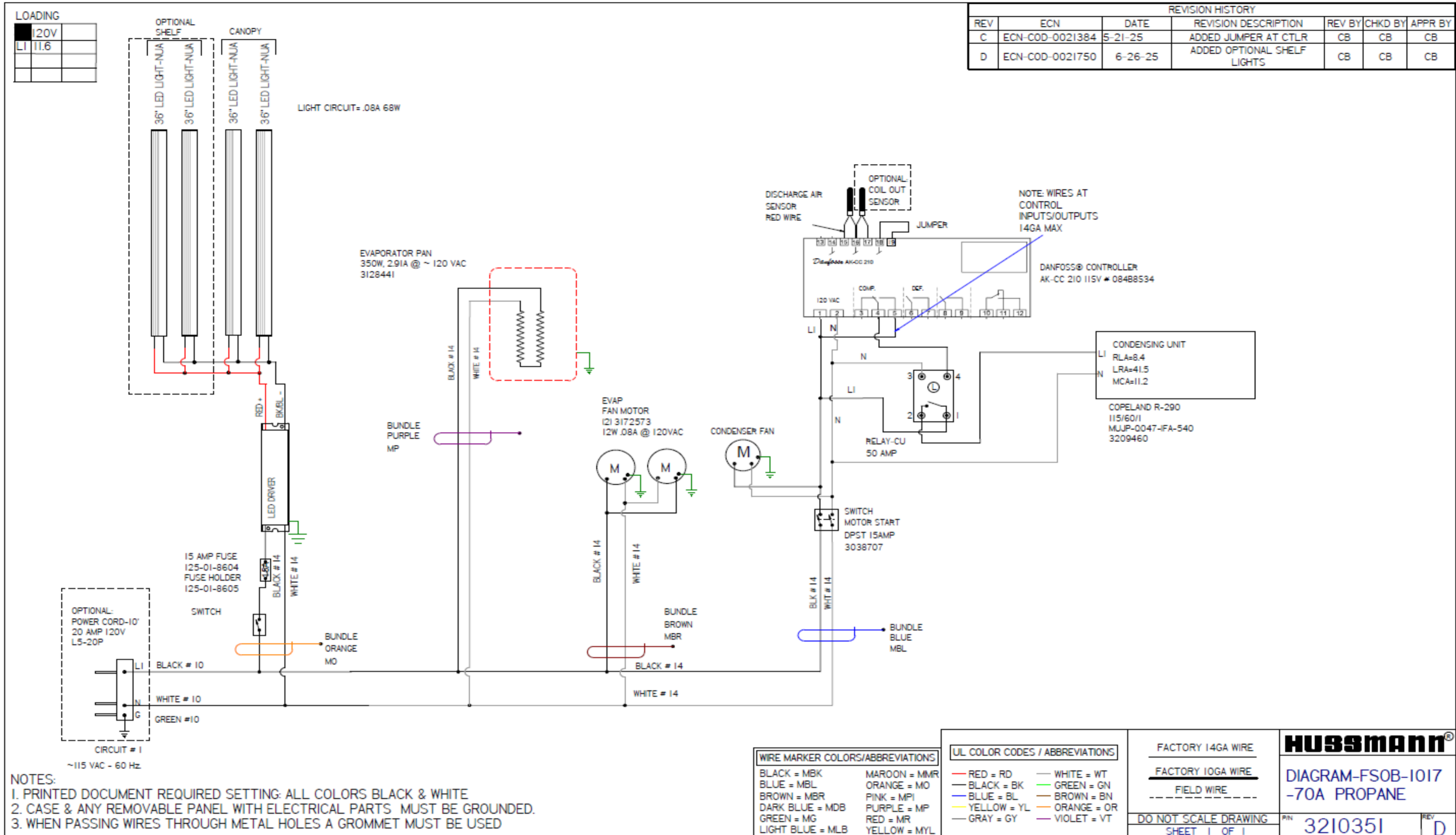
LINE SIZES	
Liquid <small>(in.)</small>	<b>1/4</b>
Suction <small>(in.)</small>	<b>3/8</b>
Drain <small>(in)</small>	<b>2.00</b>

ENERGY	
Ref Vol. <small>(ft<sup>3</sup>)</small>	<b>8.58</b>
TDA	<b>6.66</b>
TDEC <small>(kW/hr/day)</small>	<b>15.63</b>
LIMIT <small>(kW/hr/day)</small>	<b>15.91</b>

Refrigerant	
TYPE	<b>R290</b>
CHARGE <small>g (lb)</small>	<b>150(0.33)</b>

NOTES
<ol style="list-style-type: none"> <li>All data based on store temperature and humidity that does not exceed NSF Type 1 ambient conditions of 75°F and 55% relative humidity, except where noted.</li> <li>Data for operation in NSF Type 2 ambient of 80°F and 55% relative humidity, where applicable.</li> <li>AHRI 1200 Rating Point for energy consumption comparison only.</li> <li>Add 10 Btu/hr/ft (9.6 Watts/m) per shelf row for LED shelf light fixtures.</li> <li>Reduce refrigeration load by 15%, if fitted with CaseShieldPTM.</li> <li>Coil superheat can be checked via coil in vs coil out temperature measurements. Use Tcoilin - Tcoilout = Superheat</li> </ol>

REVISION HISTORY						
REV	ECN	DATE	REVISION DESCRIPTION	REV BY	CHKD BY	APPR BY
C	ECN-COD-0021384	5-21-25	ADDED JUMPER AT CTRLR	CB	CB	CB
D	ECN-COD-0021750	6-26-25	ADDED OPTIONAL SHELF LIGHTS	CB	CB	CB



## ELECTRICAL

TOTAL CASE ELECTRICAL	
VOLTS	120V
MCA	20
MOP	20
Single Phase / 60Hz	
<b>Connection</b>	
PLUG	
L5-20P	

ELECTRICAL DETAILS					
<b>Fans</b>		<b>Condensate Pan Heater</b>		<b>Condensing Unit</b>	
Count	2	TYPE	RESISTANCE	HP	0.47
RPM	1350	Total Amps	2.91	Capacity (BTU/hr)	3760
Blade	28	Watts	350	RLA	8.4
Total Amps	0.16			LRA	41.5
Total Watts	24			Watts	593
<b>Max Lights (Optional)</b>				Heat Rej. (BTU/hr)	4960
Total Amps	0.95				
Total Watts	80.00				