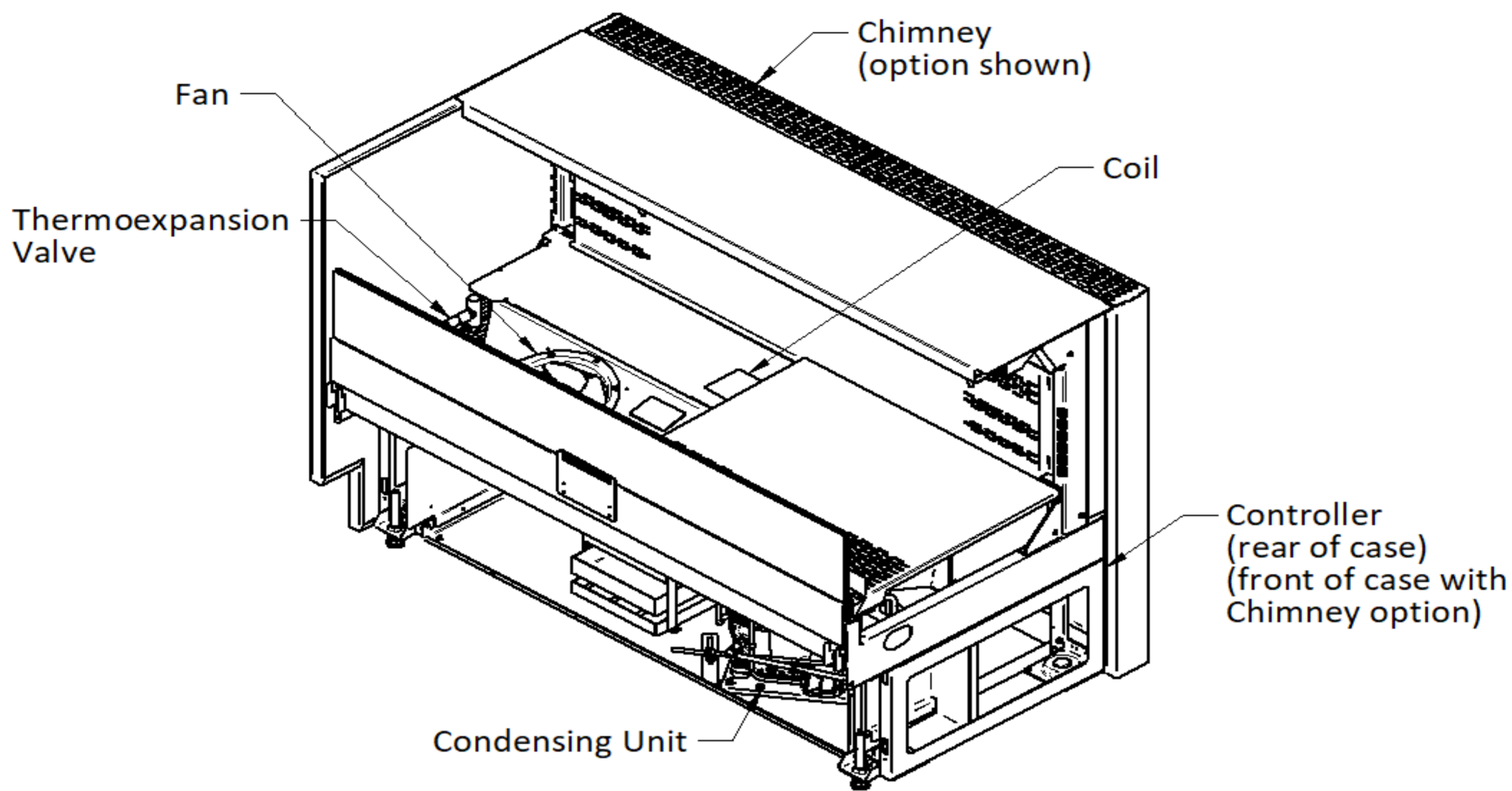


COVERS MODELS:
FS-OB-1017-46A

October 2025

DOE 2017
Energy Efficiency
Compliant


NSF Certification
This merchandiser model is manufactured to meet NSF/ANSI (National Sanitation Foundation) Standard #7 requirements for construction, materials and cleanability.



Intertek



Intertek

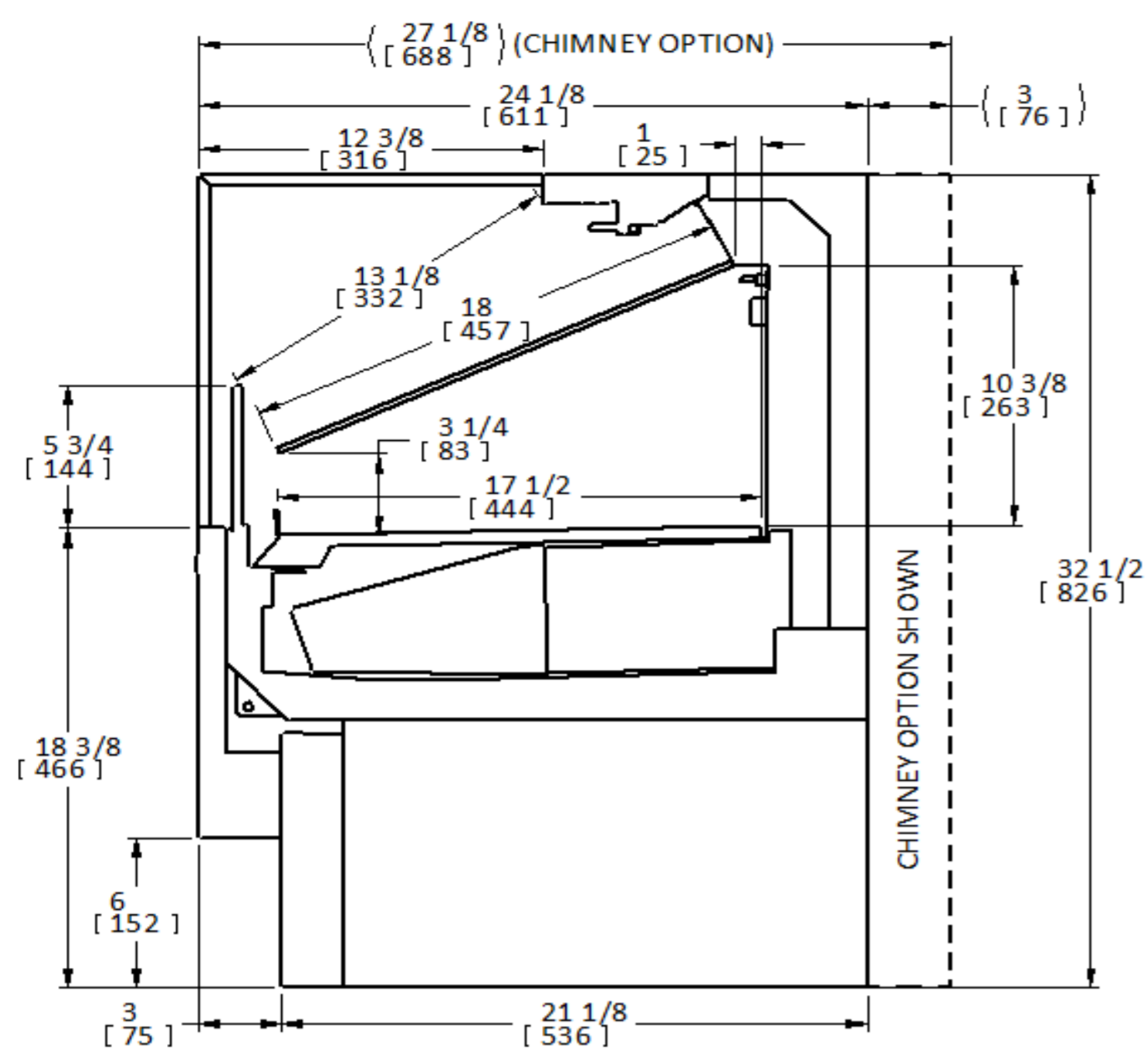


Scan the QR code with your mobile device to access additional product information or order parts.

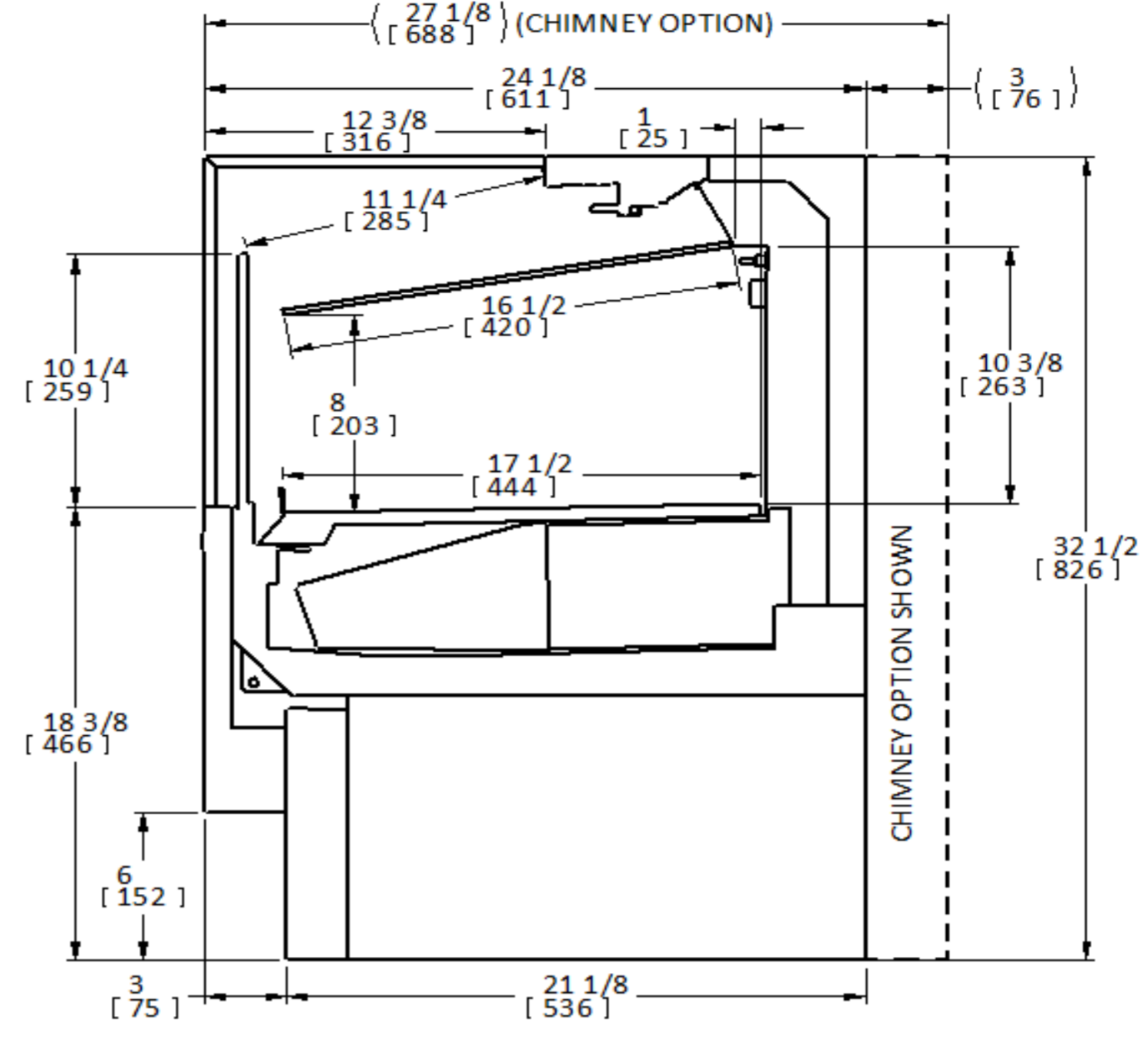
Parts may also be ordered at:
parts.husmann.com
Call toll free: 1.855.487.7778

We reserve the right to change or revise specifications and product design in connection with any feature of our products. Such changes do not entitle the buyer to corresponding changes, improvements, additions or replacements for equipment previously sold or shipped.

Case Section

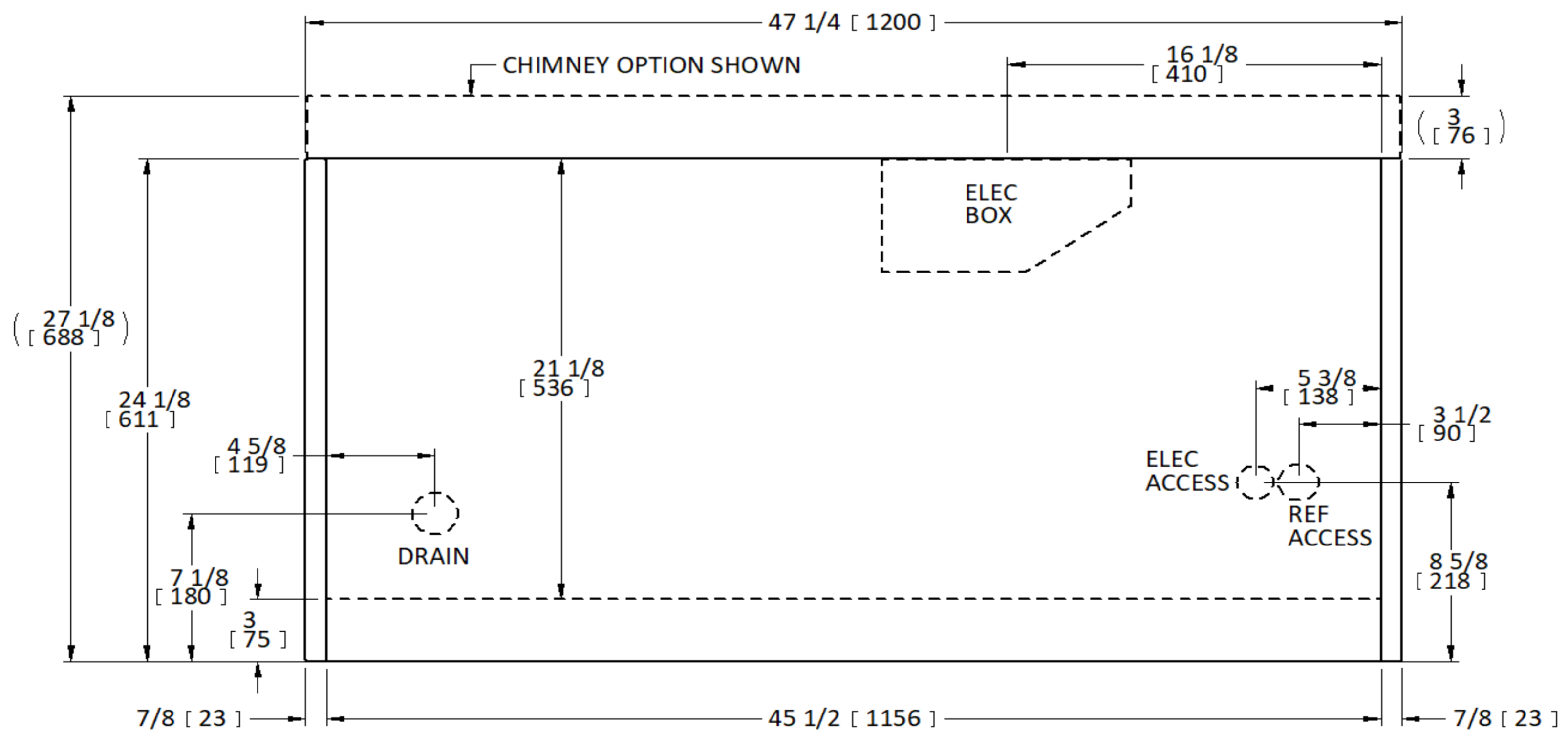


STD FRONT SILL GLASS



TALL FRONT SILL GLASS

Case Plan View



REFRIGERATION DATA & DEFROST			
Model	Data Type	T1 Deli	T2 Deli
FS-OB-1017-46A	Setpoint [°F]	21	20
	Differential [°F]	6	6
	Avg Discharge Air [°F]	27-28	23-24
	Discharge Velocity [fpm]	20-55	20-55
	Avg Evap [°F]	19-20	17-18
	Conventional Load [BTUH]	1954	2247
	Frequency [# per day]	6	6
	Off Time [min]	25	25
	Termination [°F]	48	48

Revision History

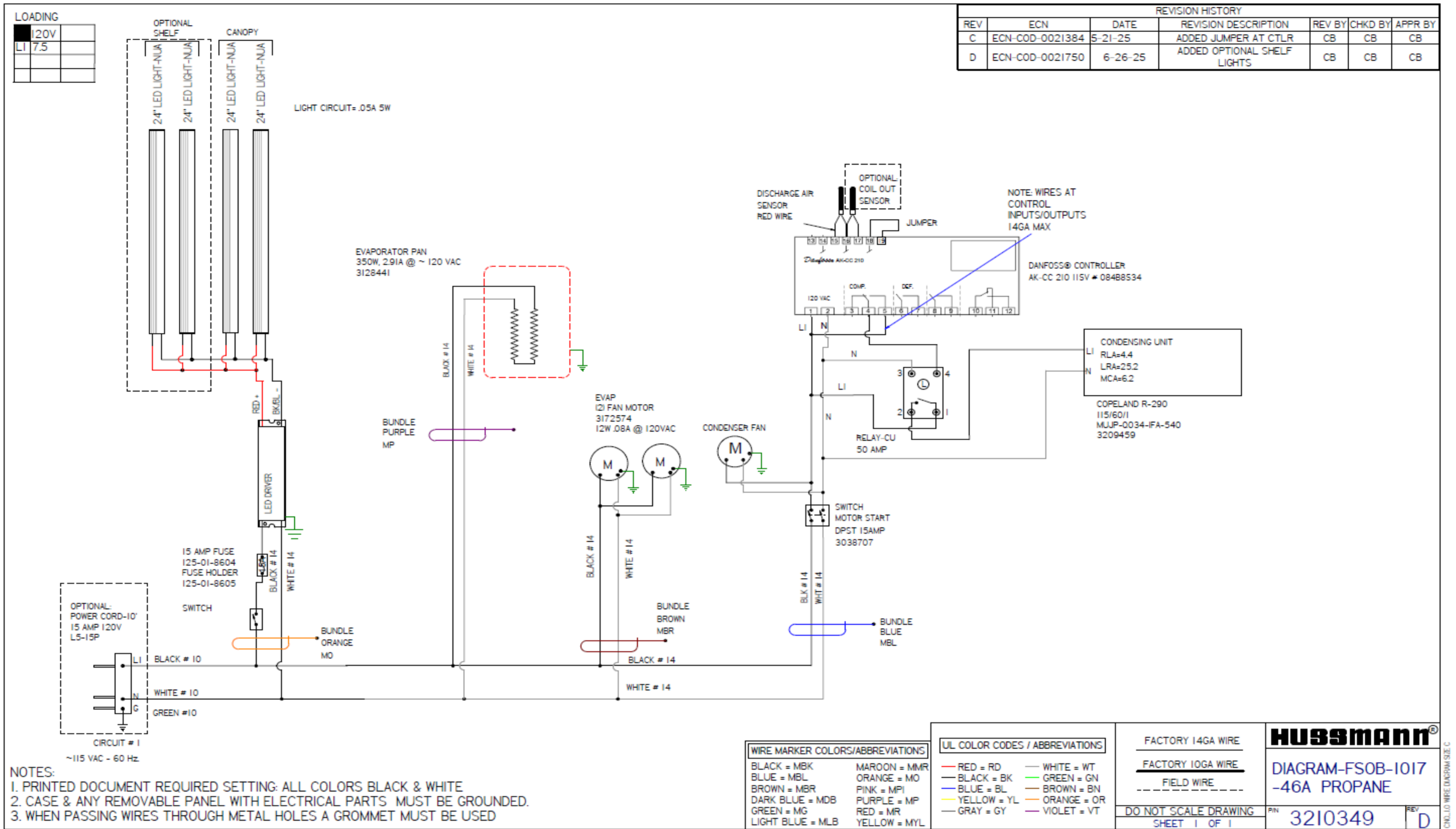
Revision A: 7/03/2025:
Original Issue.
Rev. B: 9/30/25

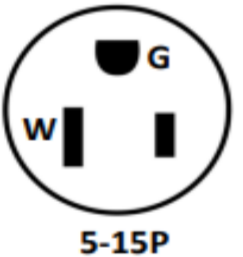
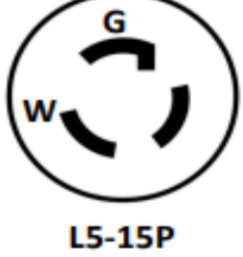
PHYSICAL					
DIMENSIONS <small>in. (mm)</small>		SHELVES		LINE SIZES	
Length <small>in. (mm)</small>	47.25 (1200)	Shelf Area <small>ft² (m²)</small>	1.8 (0.17)	Liquid <small>(in.)</small>	1/4
Depth <small>in. (mm)</small>	24.13 (613)	Usable Cube <small>ft³ (m³)</small>	5.7 (0.16)	Suction <small>(in.)</small>	3/8
Height <small>in. (mm)</small>	32.50 (826)	Rows Min. Count	0	Drain <small>(in)</small>	2.00
		Rows Max. Count	1		
		Slant <small>(degrees)</small>	5		
		Shelf Depths <small>in. (mm)</small>	6 (152)		

ENERGY	
Ref Vol. <small>(ft³)</small>	5.72
TDA	4.36
TDEC <small>(kW/hr/day)</small>	10.41
LIMIT <small>(kW/hr/day)</small>	12.00

Refrigerant	
TYPE	R290
CHARGE <small>g (lb)</small>	120(0.27)

NOTES
<ol style="list-style-type: none"> All data based on store temperature and humidity that does not exceed NSF Type 1 ambient conditions of 75°F and 55% relative humidity, except where noted. Data for operation in NSF Type 2 ambient of 80°F and 55% relative humidity, where applicable. AHRI 1200 Rating Point for energy consumption comparison only. Add 10 Btu/hr/ft (9.6 Watts/m) per shelf row for LED shelf light fixtures. Reduce refrigeration load by 15%, if fitted with CaseShieldPTM. Coil superheat can be checked via coil in vs coil out temperature measurements. Use Tcoilin - Tcoilout = Superheat



TOTAL CASE ELECTRICAL		ELECTRICAL				ELECTRICAL DETAILS	
VOLTS	120V	Fans		Condensate Pan Heater		Condensing Unit	
MCA	15	Count	2	TYPE	RESISTANCE	HP	0.34
MOP	15	RPM	1350	Total Amps	2.91	Capacity (BTU/hr)	2740
Single Phase / 60Hz		Blade	28	Watts	350	RLA	4.4
Connection		Total Amps	0.16				
PLUG		Total Watts	24				
Standard 		Max Lights (Optional)					
Optional 		Total Amps	0.95				
		Total Watts	80.00				
						Watts	384
						Heat Rej. (BTU/hr)	3267