

INSTRUCTIONS

1.

If using the dispenser for the first time or after a long period between usage, thoroughly wash the bottle and head with mild detergent and warm water, then with cold water to cool down. **Helpful Hint:** To thoroughly chill the bottle, place it in the refrigerator for 10-15 mins.
2.

While pressing down on the lever, unscrew the piston cap. Select a decorator tip and screw it on, making sure that it is secure but not too tight.
3.

Fill the bottle with well-chilled whipping cream or other prepared mixture. **DO NOT exceed the maximum Fill Line on the bottle.** Always dissolve or strain out any solids first before filling the bottle to avoid formation of clumps. Insoluble ingredients such as seed and pulp will prevent closure of the piston valve and impair proper functioning of the dispenser. For best results, use powdered sugar or liquid sweeteners and powdered or liquid spices. Granulated sugar or salt should be completely dissolved in liquid before use.
4.

Screw the head onto the bottle firmly and evenly, until no thread is visible.
5.

Unscrew the thread cap, then insert the Whip-It! Brand cream charger (N2O) into the charger holder and screw the charger holder onto the inlet valve (shown in Fig 2) until you hear a hissing sound, indicating that you have fully released the contents of the charger into the dispenser. Safety Note: When charging heavy whipping cream (fat content of 32-36%), NEVER USE MORE THAN 1 charger for .25 liter, 1 charger for .50 liter, and 2 chargers for 1 liter. As a precaution, position the decorator tip away from you and others when you complete this step.
6.

Invert the dispenser and shake vigorously in a vertical motion about 10 times for heavy whipping cream and up to 20 or more times for lighter mixtures containing little or reduced fat content (e.g. foams). Unscrew the charger holder (you might hear a slight hissing sound) and remove the cream charger. Screw the charger holder back on or use the thread cap.
7.

To dispense, hold the dispenser with the decorator tip pointed vertically downwards about 1 cm above the surface and **gently** squeeze the lever. Invert the dispenser and shake vigorously in a vertical motion about 10 times for heavy whipping cream and up to 20 or more times for lighter mixtures containing little or reduced fat content (e.g. foams). For best results, serve immediately upon dispensing.

CLEANING & STORAGE

1.

Make sure all the pressure has been released from the dispenser by pressing down on the lever before removing the head.
2.

Unscrew the decorator tip and remove the gasket from the interior of the head.
3.

From the top of the dispenser head, press down on the piston valve with one hand and remove it from the base with the other.
4.

Thoroughly hand wash the components with warm water and mild detergent. Use the small brush to clean the decorator tips, charger holder and piston valve. Allow all the parts to air dry completely before storing. Store the bottle and head separately. Only stainless steel models are dishwasher safe. However, we strongly recommend that you hand wash all the smaller parts, such as the flat gasket, piston and piston screw.
5.

Never store the dispenser in the freezer or deep-freezing compartment.

WARRANTY

Defective dispenser caused by faulty materials or bad workmanship will be repaired free of charge within two years of the date of purchase. Limited Lifetime Warranty applies to stainless steel models only. This warranty does not cover malfunction due to improper use, use of damaged parts, or any consequential damage. In order to assure the proper functioning of your dispenser, only use original Whip-It! Brand parts and chargers. Please read the instructions carefully. For more information, call 800.500.0583 or visit www.whipitbrand.com.

DISPENSER TROUBLESHOOTING

Maximum number of chargers to use for dispenser size

For heavy whipping cream (fat content 32-36%), NEVER USE MORE THAN 1 charger for 1/4 liter and 1/2 liter dispensers, and 2 chargers for 1 liter dispensers.

Contents are not emptying out of the dispenser

- Cream may have been shaken too long which has caused it to become too stiff.
- You were using low- or non-fat cream to make whipped cream. For best results, use heavy cream with a fat content of 32-36%.
- You were not operating the dispenser with the tip pointing downward, resulting in a loss of pressure.

Dispenser was overfilled

- Place the dispenser upright and gently squeeze the lever to release the gas from the dispenser. Unscrew the head and pour out the contents. Refill dispenser but DO NOT exceed the maximum fill line on the bottle.

Cream charger has not been pierced

- Charger was inserted incorrectly. Please refer to the instructions diagram for a visual.
 - Never insert charger if the decorator tip is not attached to the dispensing valve.
 - Always follow safety warnings on the cream charger box packaging.
- Charger might be another brand and is not compatible.
 - Always use original Whip-It Brand cream chargers.
- Piercing unit is not working properly. Contact our Customer Service Department at 800.500.0583 or visit whipitbrand.com.

Head of the dispenser is pressurized and cannot be removed

- Release the gas from dispenser by placing the dispenser head upwards, holding a towel over the tip, and pressing the lever. Remove the head from the dispenser.
- If the pressure cannot be released, unscrew the decorator tip so that the end of the valve is exposed. Invert the dispenser into a sink or bucket and push down so that the valve goes completely into the head of the dispenser. Once that is done, you can remove the head from the dispenser.

Dispenser is releasing pressure

- Make sure that the decorator tip of the dispenser is screwed on properly before using cream chargers.
- Check to see if the head has been screwed on correctly, not damaged, and thoroughly cleaned.
- Inspect the gasket to ensure that it has not been damaged or missing.

CALL

Telephone: 650.588.2203

Toll Free: 800.500.0583

Fax: 650.588.8568

EMAIL

General Info

sales@unitedbrands.us

Customer Service

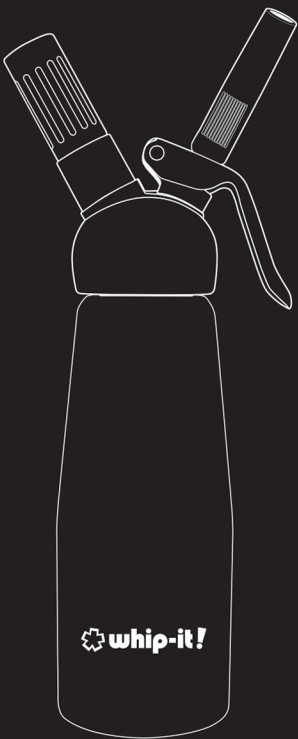
support@unitedbrands.us

U.S. HEADQUARTERS

170 Associated Rd.
South San Francisco, CA 94080

www.whipit.com

 **whip-it!**



 **whip-it!**

DISPENSER
INSTRUCTIONS

 **whip-it!**

Thank you for choosing the Whip-It! Brand dispenser. This high quality, versatile kitchen tool is perfect for producing freshly whipped cream, topping off signature beverages and decadent desserts, infusing spirits and cocktails, and making luscious foams and sauces to enhance any culinary creation. With Whip-It! Brand, we bring your culinary imagination to life!

Before using the dispenser, please read the following information carefully.

PARTS LIST



WARNINGS

Failure to adhere to the following important safety instructions may result in serious permanent injury or death.

1.

Please take extra precaution when handling the dispenser and chargers as they are both pressurized vessels.
2.

Use only Whip-It! Brand original spare parts. Never combine parts with other manufacturers' products. For spare parts, please contact Whip-It! Brand at 800.500.0583 or visit www.whipitbrand.com.
3.

For best results, always use Whip-It! Brand chargers in the dispenser.
4.

Do not attempt to make any modifications or repairs to the dispenser. Any attempts or improper manipulation of the dispenser will terminate all guarantees and warranty.
5.

Never use the dispenser if it has been dropped or damaged (i.e. cracked or dented). Always send the Whip-It! Brand dispenser back for a safety check and/or repairs. For repairs, always return the complete unit (head and bottle).
6.

Do not use force when assembling the components, such as screwing on or off the head.
7.

Only open the dispenser once all the pressure has been released. Press the lever until the hissing sound stops. Do not under any circumstances attempt to unscrew the head while the dispenser is still pressurized.
8.

In case of improper filling in which solid ingredients might have clogged the valve, please do the following: Place the dispenser on a countertop or table and wait until the solids have settled to the bottom of the bottle. Cover the head with a thick cloth and press down on the lever several times until all the gas has escaped. If you cannot unscrew the head, please send the dispenser in for repair.
9.

Do not turn the dispenser over while charging.
10.

Never overfill the dispenser or use more chargers than specified. **When charging heavy cream (fat content of 32-36%), use 1 charger for .25 liter, 1 charger for .5 liter, and 2 chargers for 1 liter.**
11.

Do not expose the Whip-It! dispenser to heat (i.e. sun, stove, oven, microwave, etc).
12.

When cleaning, only remove the parts shown in the Parts List. Do not use special cleaning agents for stainless steel, scouring agents, or abrasive sponges/brushes.
13.

Keep this unit out of reach of children at ALL times.
14.

Never inhale or ingest the contents directly from the dispenser. Inhalation of nitrous oxide is known to cause damage to the central nervous system, or even death. Inhalation of liquid contents may also cause serious injury or death.
15.

N2O cartridges are to be used for food and beverage consumption only.

Contents in dispenser are too runny

Invert the dispenser and shake vigorously in a vertical motion about 10 times for heavy whipping cream and up to 20 or more times for lighter mixtures containing little or reduced fat content (e.g. foams).

What to do with used empty cream chargers

DO NOT reuse empty cream chargers. Please recycle.

Decorator tip cannot be removed

The tip may have been screwed on too tightly. Try gently pulling on the tip from the base to get more leverage while unscrewing. Only screw on the tip lightly until it no longer turns.

Hot preparations

Only stainless-steel dispenser models are suitable for hot preparations.

Dispenser parts from other brands are not recommended

In order to assure the proper functioning of your product, use only original Whip-It! Brand parts and chargers. Never combine parts with other manufacturers' products. Do not attempt to make any modifications or repairs to the dispenser. Any attempts or improper manipulation of the dispenser will terminate all guarantees and warranty.

Missing a part of the dispenser

Check to see if the bottom of the product's box contains additional parts. If you still cannot locate the part, please contact our Customer Service Department.

Warranty/Repairs

Please contact our Customer Service Department so we can assist you with repairing or replacing your product in accordance with our warranty.

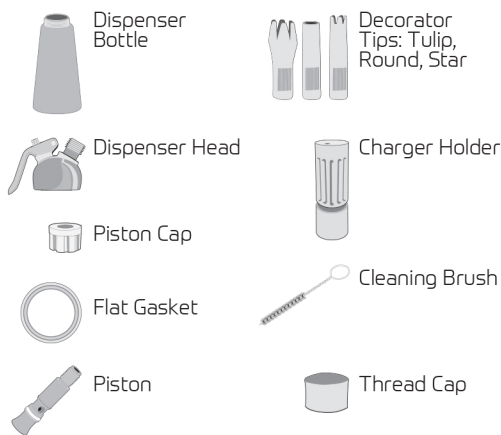
Other issues, questions or concerns

You can visit our Customer Support page at www.whipitbrand.com, call our Customer Service Department at 800.500.0583 or email support@unitedbrands.us.

Please have the following information ready to provide to our Customer Service Department:

- Model number (this is usually located on the bottom of the product)
- How long have you had the product? You may use your purchase date for reference.
- If the issue is because of a part, please take a photograph of the part so that it can be emailed to our Customer Service Department for clarity.

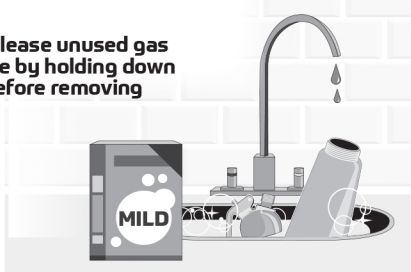
DISPENSER
USE INSTRUCTIONS



1

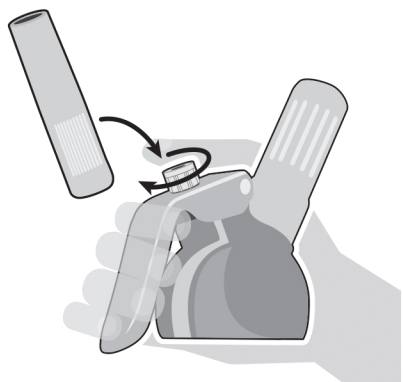
If using the dispenser for the first time or after a long period between usage, thoroughly wash the bottle and head with mild detergent and warm water, then with cold water to cool down.

NOTE:
ALWAYS release unused gas in the bottle by holding down the lever before removing the head.



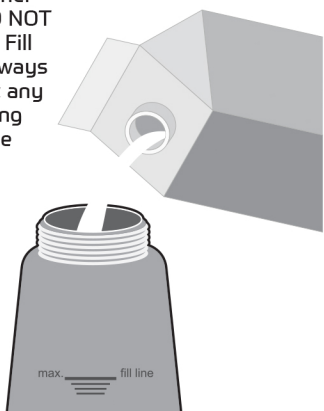
2

While pressing down on the lever, unscrew the piston cap. Select a decorator tip and screw it on making sure that it is secure, but not too tight.



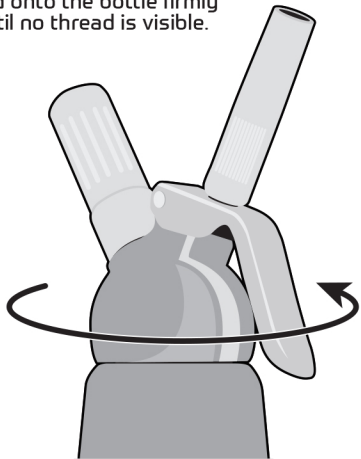
3

Fill the bottle with well-chilled whipping cream or other prepared mixture. **DO NOT** exceed the maximum Fill Line on the bottle. Always dissolve or strain out any solids first before filling the bottle to avoid the formation of clumps. For best results, use powdered sugar or liquid sweeteners and powdered or liquid spices. Granulated sugar or salt should be completely dissolved in liquid before use.



4

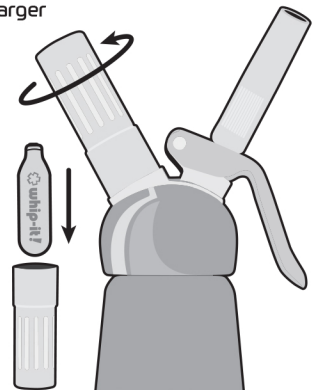
Screw the head onto the bottle firmly and evenly, until no thread is visible.



5

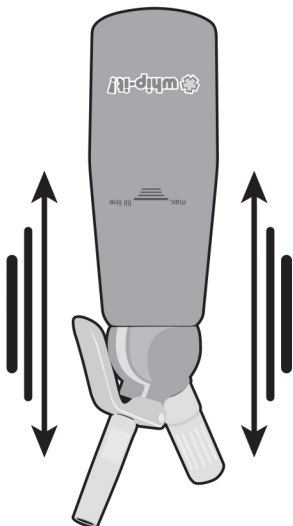
Unscrew the thread cap, then insert the Whip-It! Brand cream charger (N2O) into the charger holder and screw the charger holder onto the inlet valve until you hear a hissing sound, indicating that you have fully released the contents of the charger into the dispenser.

Safety Note:
For heavy whipping cream, NEVER USE MORE THAN 1 charger for .25 liter, 1 charger for .5 liter, and 2 chargers for 1 liter.



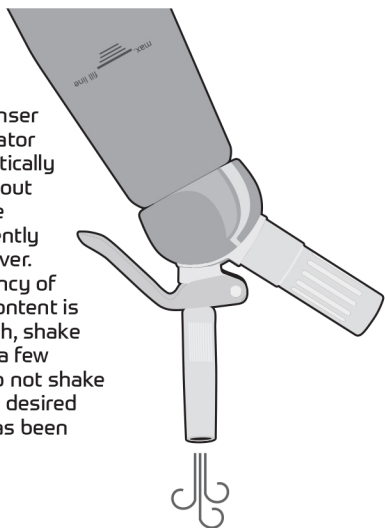
6

Invert the dispenser and shake vigorously in a vertical motion about 10 times for heavy whipping cream and up to 20 or more times for lighter mixtures containing little or reduced fat content (e.g. foams). Unscrew the charger holder (you might hear a slight hissing sound) and remove the cream charger. Screw the charger holder back on or use the thread cap.



7

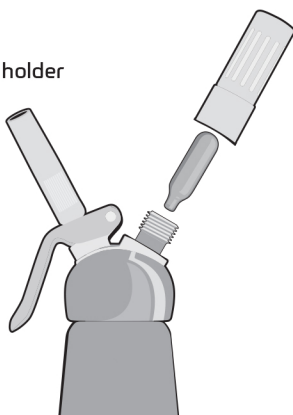
To dispense, hold the dispenser with the decorator tip pointed vertically downwards about 1 cm above the surface and gently squeeze the lever. If the consistency of the whipped content is not firm enough, shake the dispenser a few more times. Do not shake again once the desired consistency has been achieved.



DISPENSER
CLEANING INSTRUCTIONS

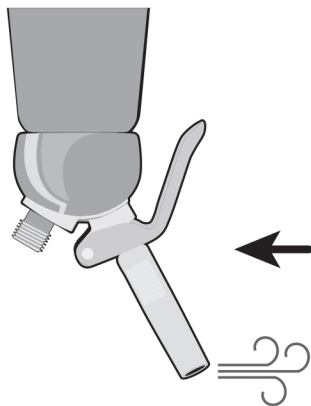
1

Remove the charger holder and N2O charger.



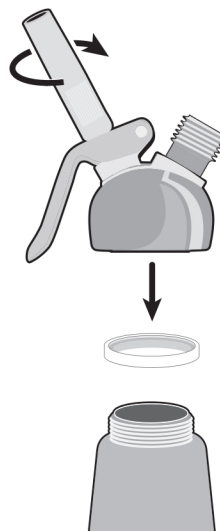
2

Verify that all the pressure has been released from the dispenser by holding it upside down and pressing on the lever until the hissing sound stops.



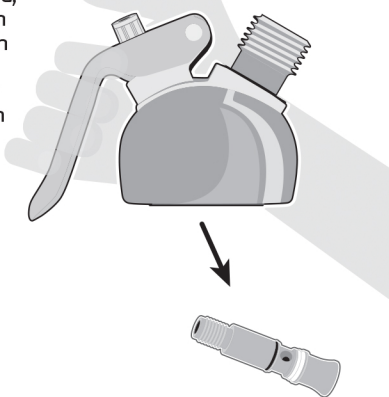
3

Unscrew the head and decorator tip, then remove the gasket from the interior.



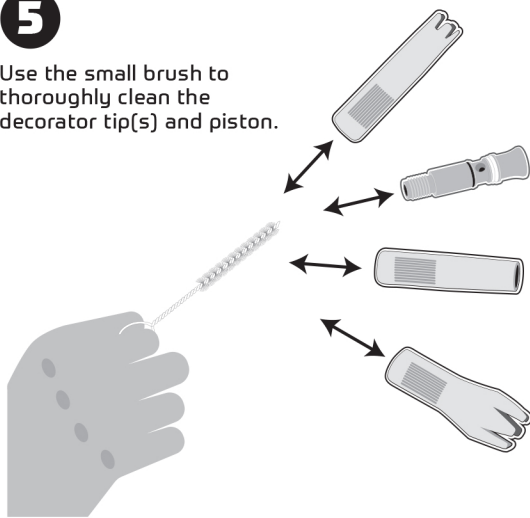
4

From the top of the dispenser head, press down on the piston with one hand and remove it with the other from the base.



5

Use the small brush to thoroughly clean the decorator tip(s) and piston.



6

For all models **except** the stainless steel models, always **hand wash** components with warm water and mild detergent. Stainless steel models are dishwasher safe, although we **highly recommend** hand washing the smaller components such as the flat gasket, piston, piston cap, and thread cap.

Hand Wash Only



7

Do not use special cleaning or scouring agents, or abrasive sponges/brushes for any of the dispensers.



8

Allow all the parts to air dry completely before storing. Store the bottle and head separately.

