



Keg Capacity Guide

For Direct Draw Coolers

Models DB36, DB52, DB60, DB72, DB84, DB108



Intertek

Conforms TO UL Std 471
Certified to CSA Std C22.2 #120

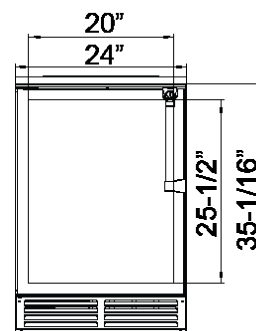
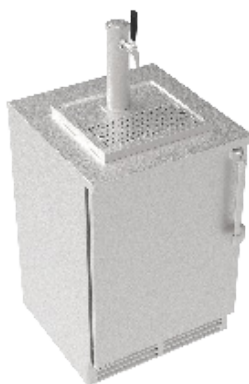


Single Door Units

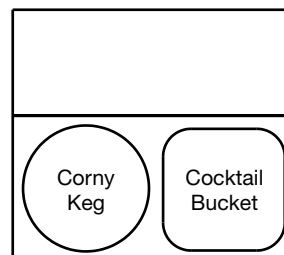
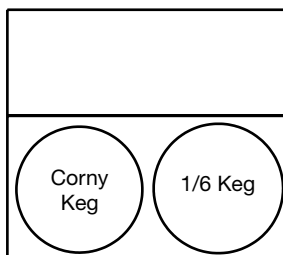
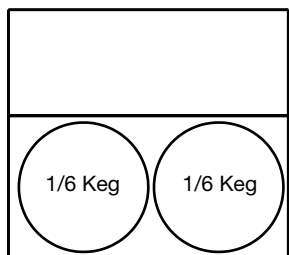
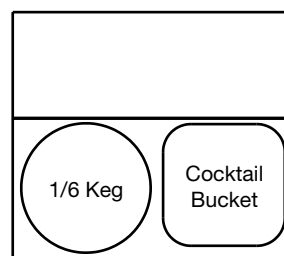
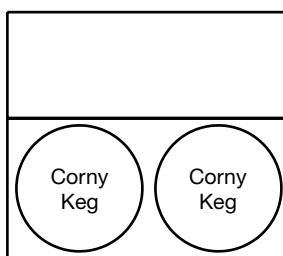
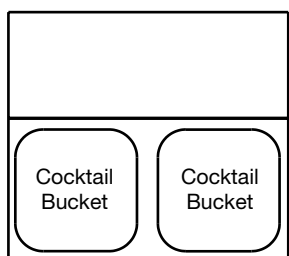
Models beginning with DB24

IMPORTANT: STORAGE PURPOSES ONLY

NOTE: DB24 models have narrow doors and cannot fit Half Barrels



20" x 25-1/2" Inside Cabinet

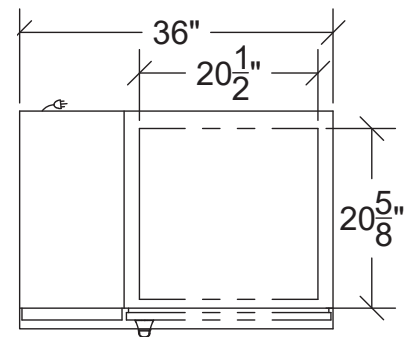




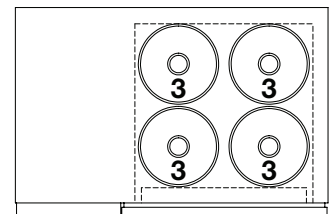
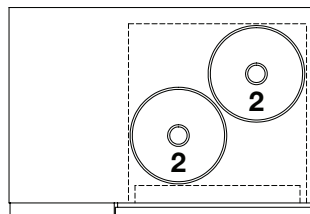
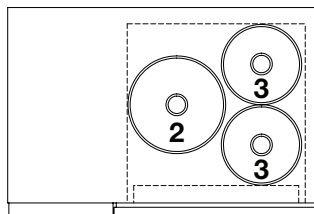
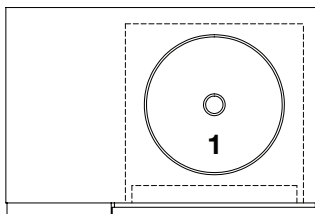
Single Door Units

Models beginning with DB36

IMPORTANT: STORAGE PURPOSES ONLY



20" x 20-5/8" Inside Cabinet



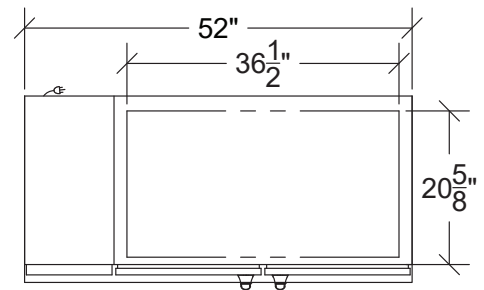


Two Door Units

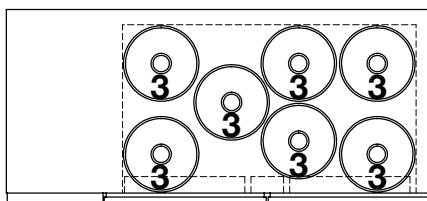
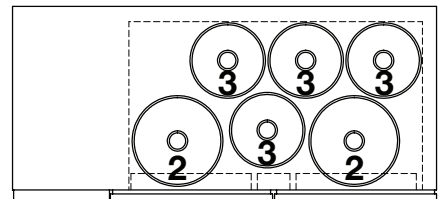
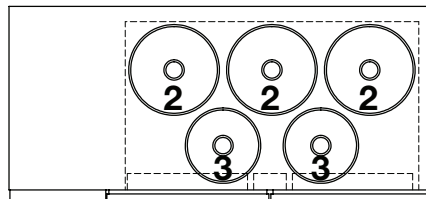
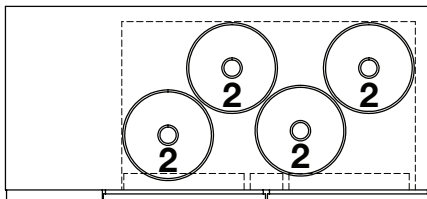
Models beginning with DB52

IMPORTANT: STORAGE PURPOSES ONLY

NOTE: DB52 models have narrow doors and cannot fit Half Barrels



36-1/2" x 20-5/8" Inside Cabinet

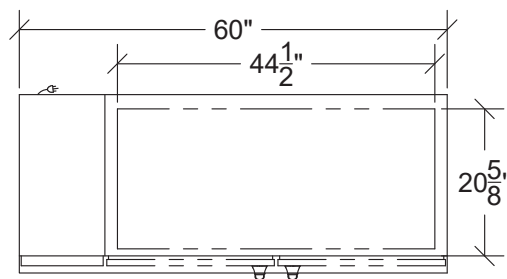




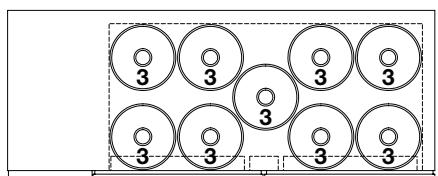
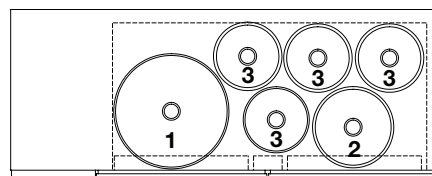
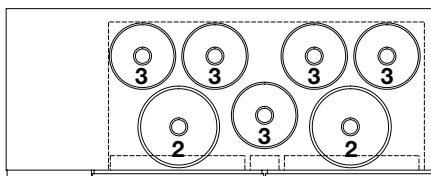
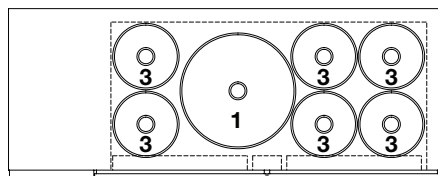
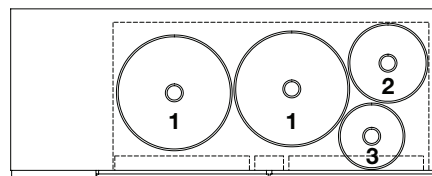
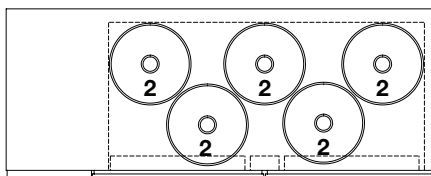
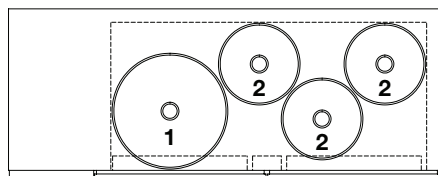
Two Door Units

Models beginning with DB60

IMPORTANT: STORAGE PURPOSES ONLY



44-1/2" x 20-5/8" Inside Cabinet

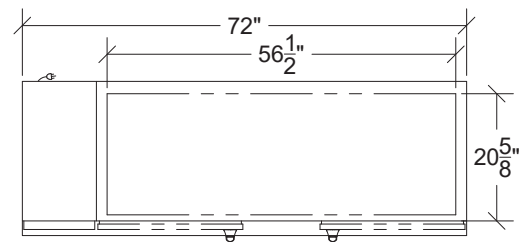




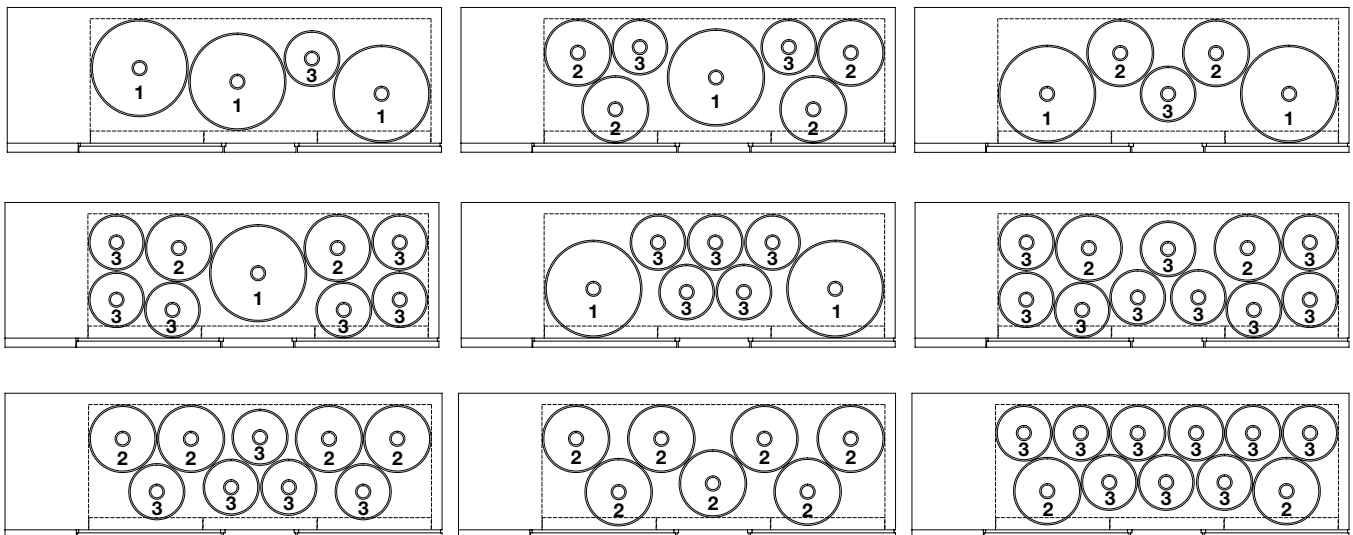
Two Door Units

Models beginning with DB72

IMPORTANT: STORAGE PURPOSES ONLY



56-1/2" x 20-5/8" Inside Cabinet

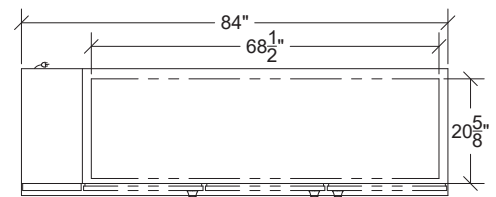




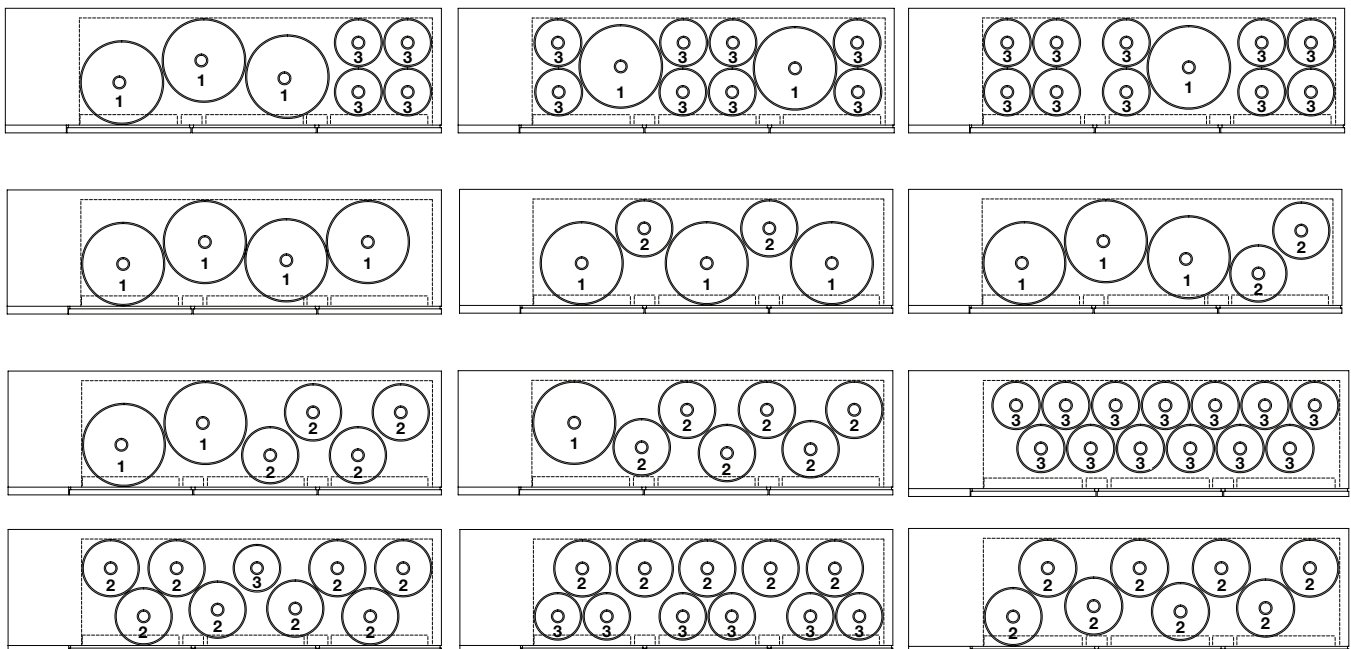
Three Door Units

Models beginning with DB84

IMPORTANT: STORAGE PURPOSES ONLY



68-1/2" x 20-5/8" Inside Cabinet

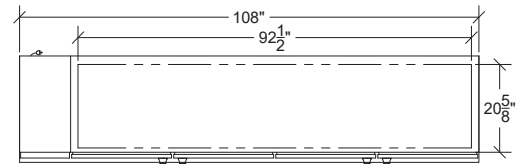




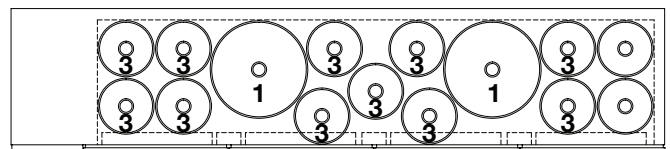
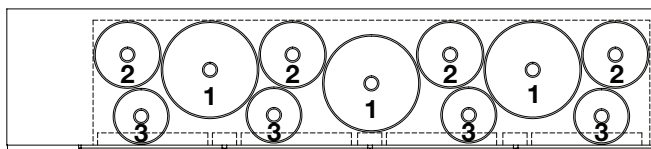
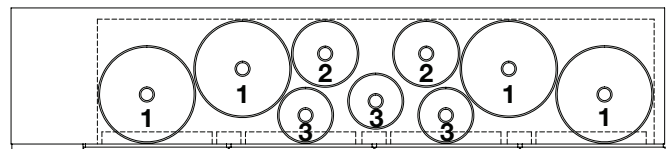
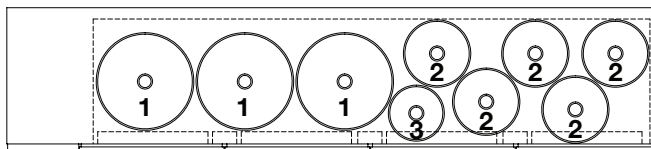
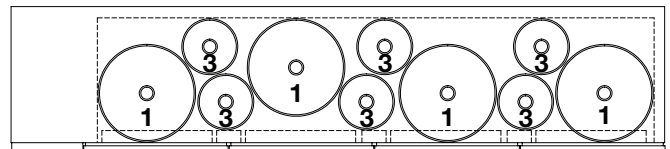
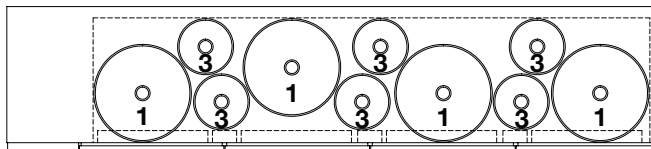
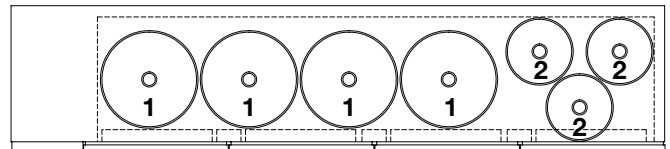
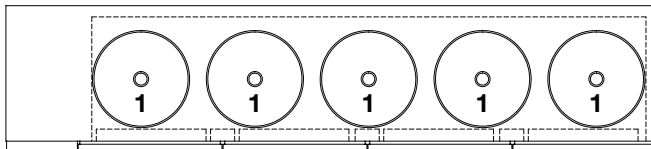
Four Door Units

Models beginning with DB108

IMPORTANT: STORAGE PURPOSES ONLY



92-1/2" x 20-5/8" Inside Cabinet



More DB108 configurations on the next page >

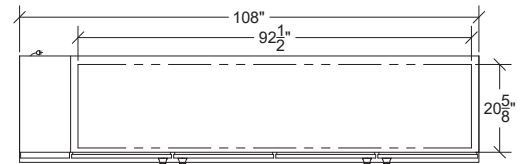


Four Door Units

(continued)

Models beginning with DB108

IMPORTANT: STORAGE PURPOSES ONLY



92-1/2" x 20-5/8" Inside Cabinet

