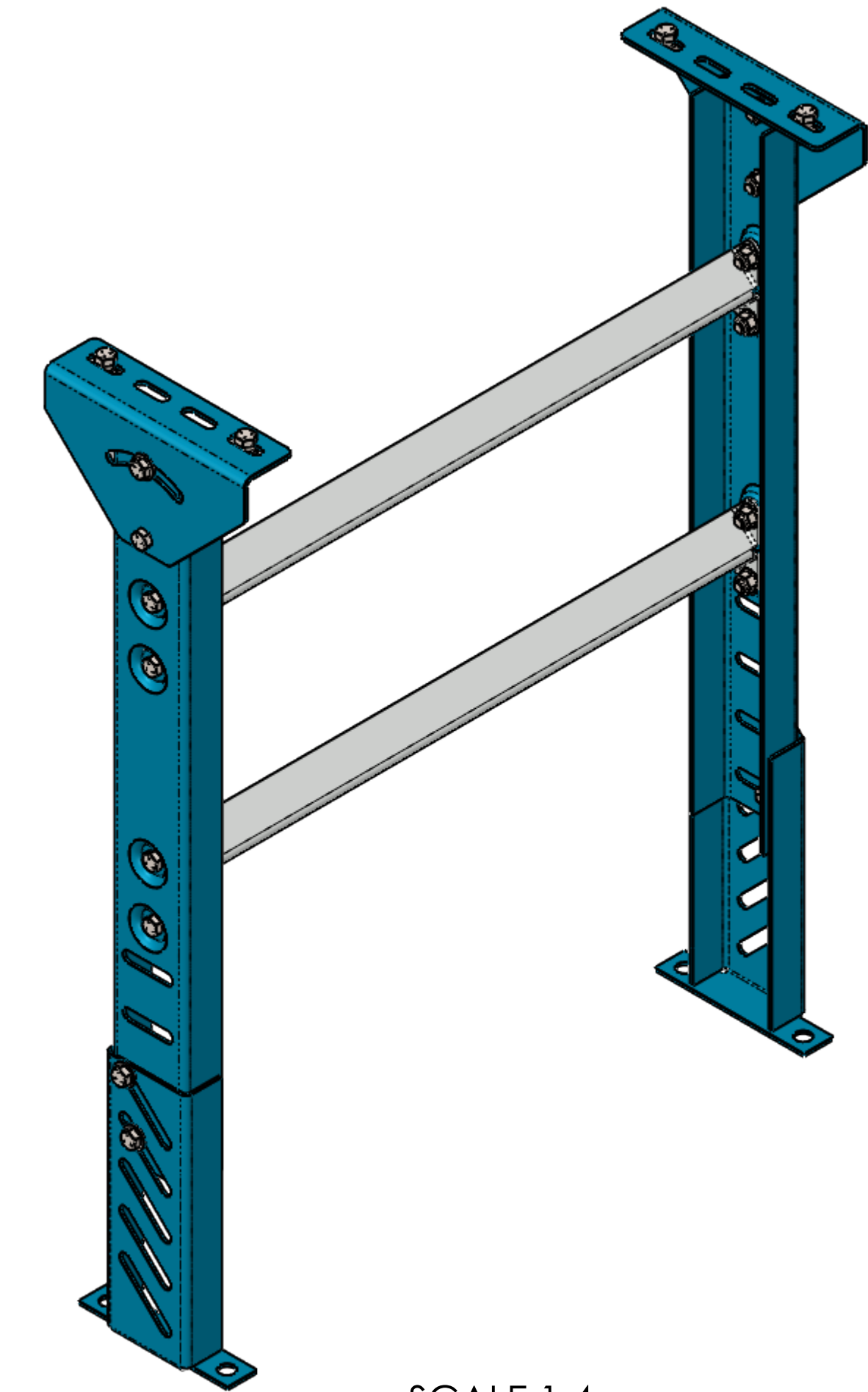
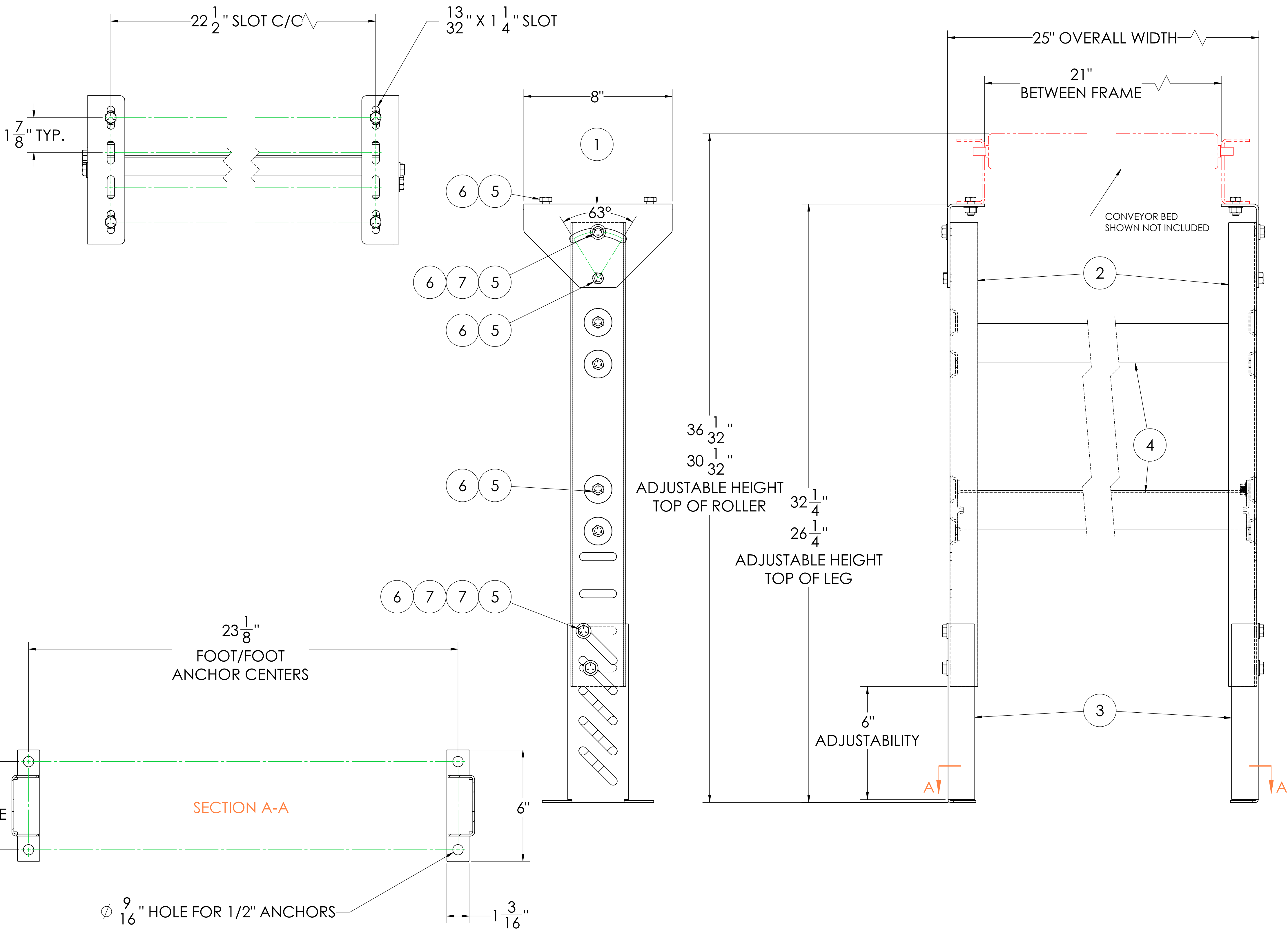



8			7		6	
ITEM NO.	QTY.	PART NO.	DESCRIPTION	MATERIAL	Weight	TOTAL WEIGHT
1	2	U10797	SMS Pivot Plate for Medium Duty Gravity Conveyor	1023 Carbon Steel Sheet (SS)	1.44	2.88
2	2	U10876	SMS-6 Upper Leg for Medium Duty Gravity Conveyor	1023 Carbon Steel Sheet (SS)	4.09	8.18
3	2	U10799	SMS Lower Leg for Medium Duty Gravity Conveyor	1023 Carbon Steel Sheet (SS)	1.68	3.36
4	2	U10801	23.94" Lg Leg Spacer for 21BF SMS	Galvanized Steel	2.72	5.44
5	20	N/A	3/8"-16 x 3/4" HHCS, Grade 5, Zinc Plated	Alloy Steel	0.04	0.8
6	20	N/A	3/8"-16 Flange Lock Nut, Zinc Plated	Alloy Steel	0.02	0.4
7	6	N/A	3/8" SAE Flat Washer, Zinc Plated	Alloy Steel	0.007	0.042
TOTAL WEIGHT:						21.102

- NOTE:
- FOR 21" BETWEEN FRAME (24" OVERALL)
 - 32-1/4" MAX HEIGHT (TOP OF LEG)
 - 26-1/4" MINIMUM HEIGHT (TOP OF LEG)
 - USE WITH MEDIUM DUTY UI CONVEYOR FRAMES
 - FINISH: ULTIMATION BLUE, POWDER COAT
 - MAXIMUM LOAD:
 - 1,500 LBS SECURED/LAGGED TO FLOOR
 - 500LBS NO FLOOR CONNECTION

REVISIONS				
REV.	DESCRIPTION	BY	APPROVED	DATE
0	RELEASE FOR MARKETING	TJH	TJH	12/21/2022



SCALE 1:4



Ultimation Industries, LLC
15935 Sturgeon St, Roseville, MI 48066
Phone: +1-586-771-1881 ultimationinc.com

DRAWING No.

U10885

UNIT

INCH

SHEET

1

SHEETS

1 of 1

SIZE

D

LEG SET ASSY FOR MEDIUM DUTY
ROLLER CONV. 21" BF. 26-1/8" TO
32-1/4" ELV.

PROPRIETARY AND CONFIDENTIAL

THE INFORMATION CONTAINED IN THIS DRAWING IS THE SOLE
PROPERTY OF ULTIMATION. ANY REPRODUCTION IN PART OR AS
A WHOLE WITHOUT THE WRITTEN PERMISSION OF ULTIMATION IS
PROHIBITED.

SCALE

1:3