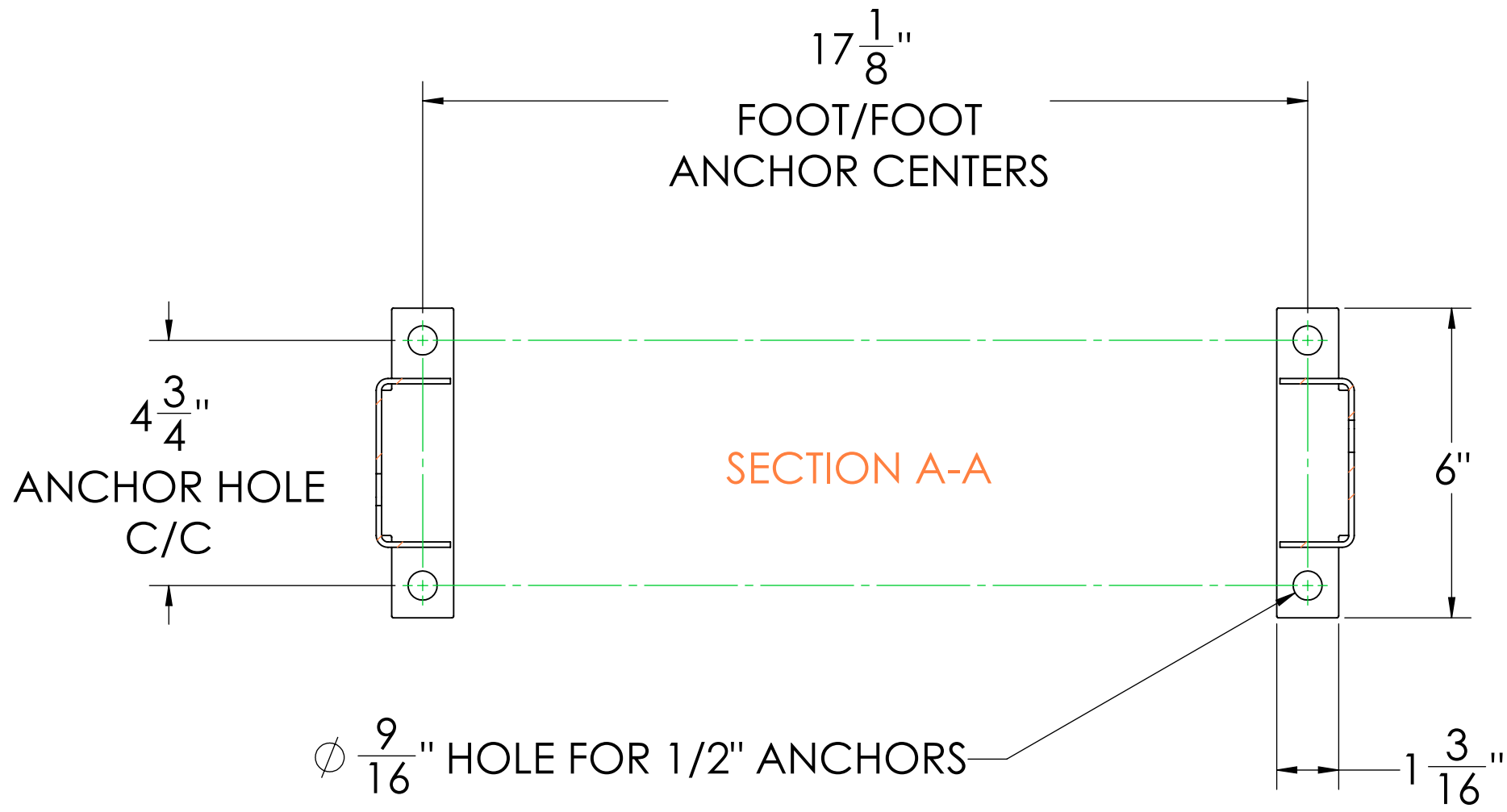
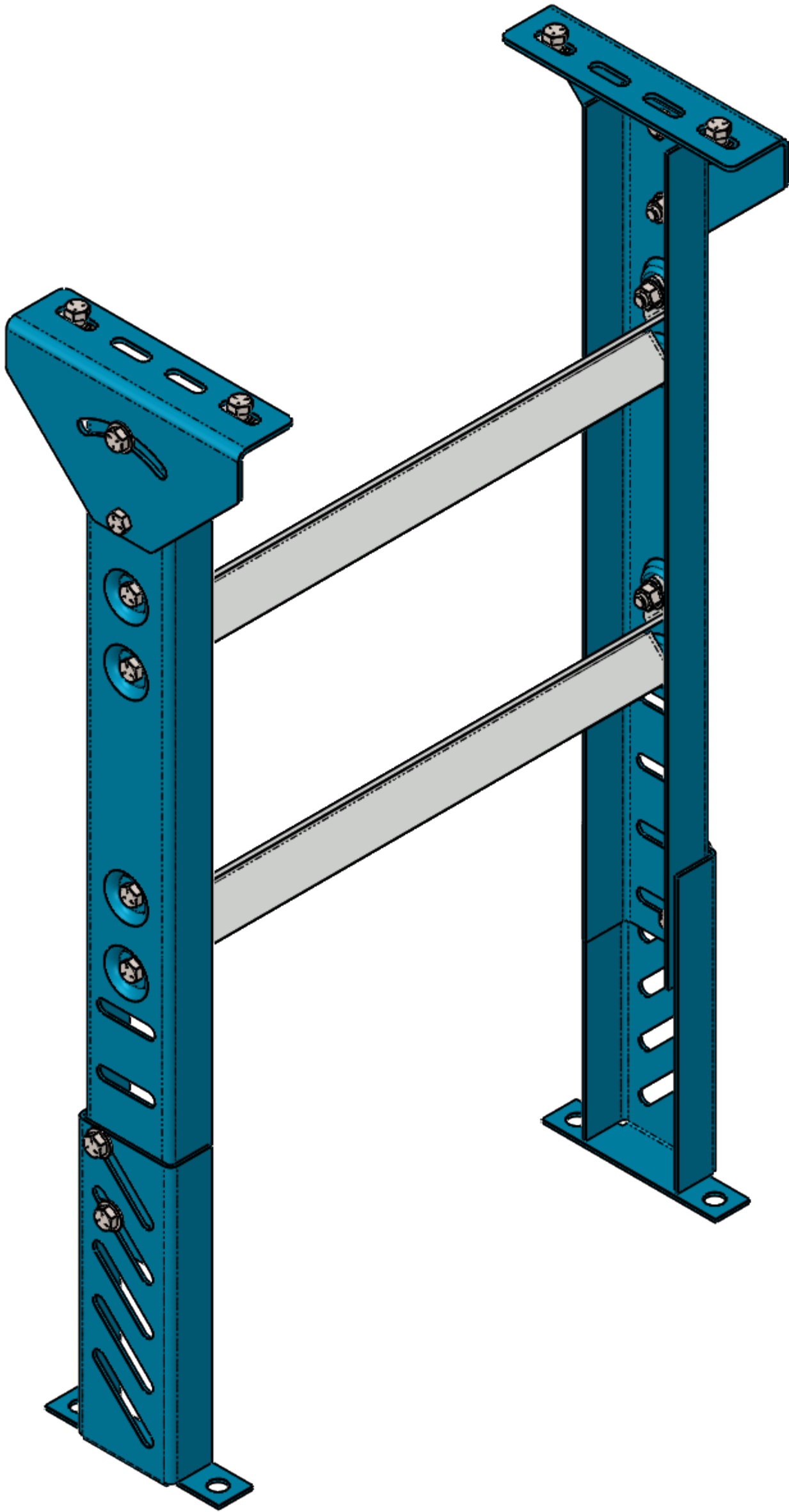
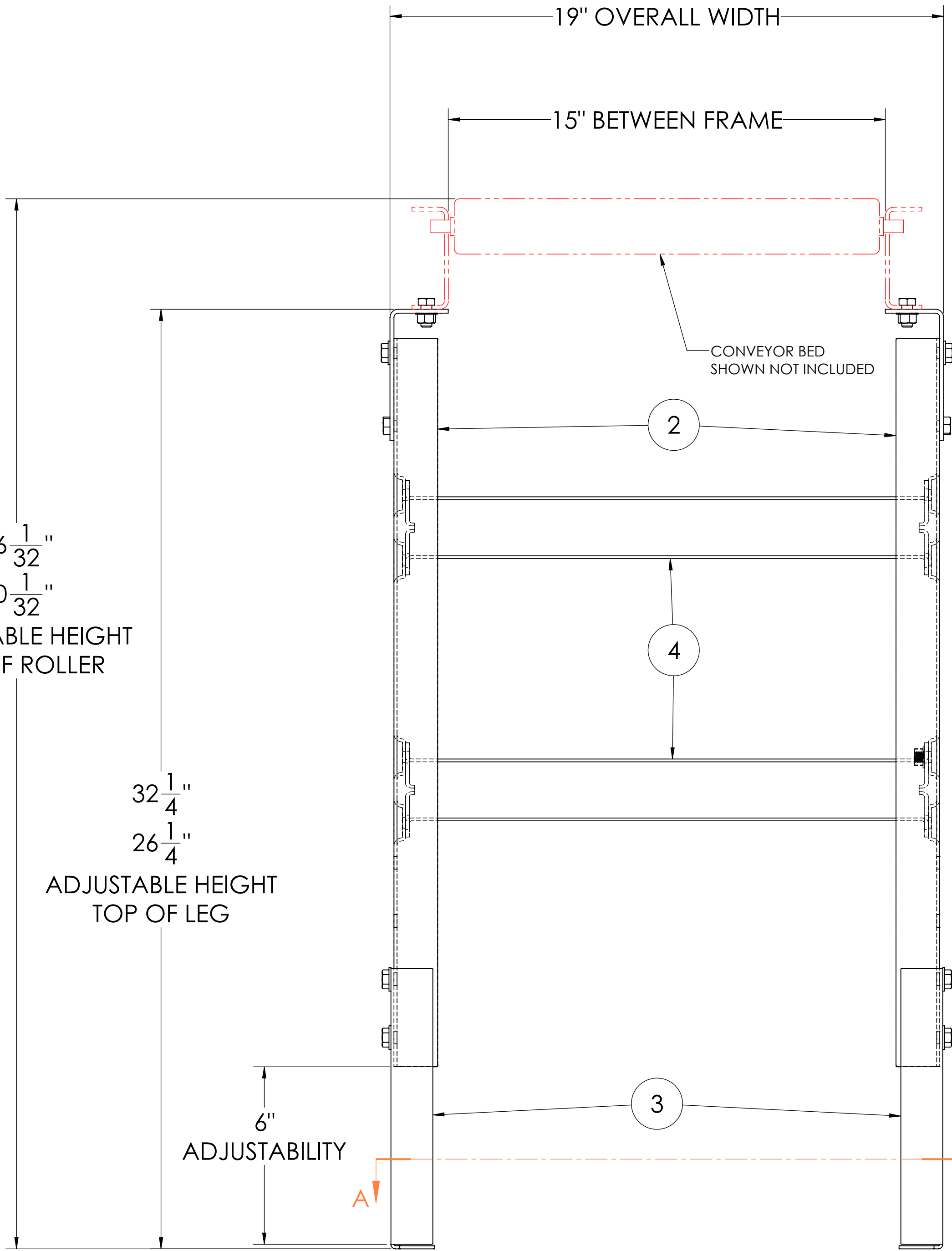
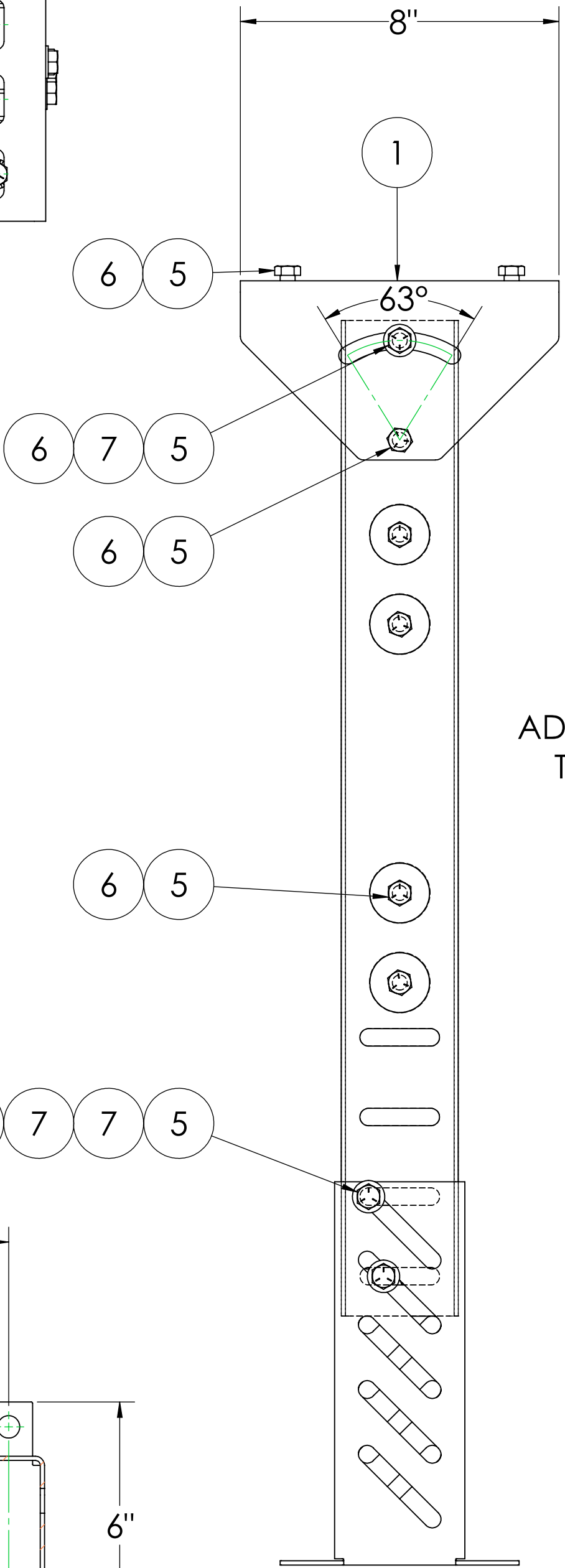
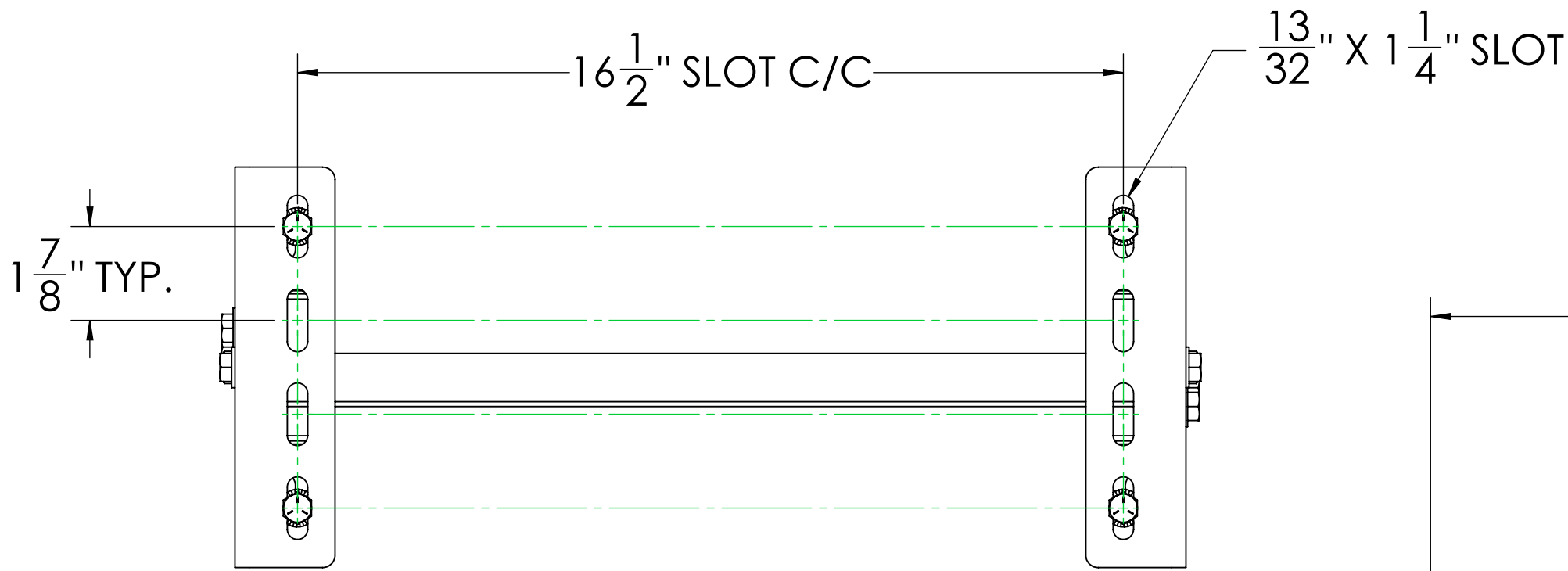


8			7		6	
ITEM NO.	QTY.	PART NO.	DESCRIPTION	MATERIAL	Weight	TOTAL WEIGHT
1	2	U10797	SMS Pivot Plate for Medium Duty Gravity Conveyor	1023 Carbon Steel Sheet (SS)	1.44	2.88
2	2	U10876	SMS-6 Upper Leg for Medium Duty Gravity Conveyor	1023 Carbon Steel Sheet (SS)	4.09	8.18
3	2	U10799	SMS Lower Leg for Medium Duty Gravity Conveyor	1023 Carbon Steel Sheet (SS)	1.68	3.36
4	2	U10800	17.94" Lg Leg Spacer for 15BF SMS	Galvanized Steel	2.06	4.12
5	20	N/A	3/8"-16 x 3/4" HHCS, Grade 5, Zinc Plated	Alloy Steel	0.04	0.8
6	20	N/A	3/8"-16 Flange Lock Nut, Zinc Plated	Alloy Steel	0.02	0.4
7	6	N/A	3/8" SAE Flat Washer, Zinc Plated	Alloy Steel	0.007	0.042
TOTAL WEIGHT:					19.782	

NOTE:

- FOR 15" BETWEEN FRAME (18" OVERALL)
- 32-1/4" MAX HEIGHT (TOP OF LEG)
- 26-1/4" MINIMUM HEIGHT (TOP OF LEG)
- USE WITH MEDIUM DUTY UI CONVEYOR FRAMES
- FINISH: ULTIMATION BLUE, POWDER COAT
- MAXIMUM LOAD:
 - 1,500 LBS SECURED/LAGGED TO FLOOR
 - 500LBS NO FLOOR CONNECTION

REVISIONS				
REV.	DESCRIPTION	BY	APPROVED	DATE
0	RELEASE FOR MARKETING	TJH	TJH	12/21/2022



ULTIMATION

THIRD ANGLE PROJECTION

DRAWING No. U10884

UNIT INCHSHEET 1SHEETS 1 of 1SIZE D

LEG SET ASSY FOR MEDIUM DUTY
ROLLER CONV. 15" BF. 26-1/8" TO
32-1/4" ELV.

PROPRIETARY AND CONFIDENTIAL
THE INFORMATION CONTAINED IN THIS DRAWING IS THE SOLE
PROPERTY OF ULTIMATION. ANY REPRODUCTION IN PART OR AS
A WHOLE WITHOUT THE WRITTEN PERMISSION OF ULTIMATION IS
PROHIBITED.

Ultimation Industries, LLC
15935 Sturgeon St, Roseville, MI 48066
Phone: +1-586-771-1881 ultimationinc.com

SCALE
1:3