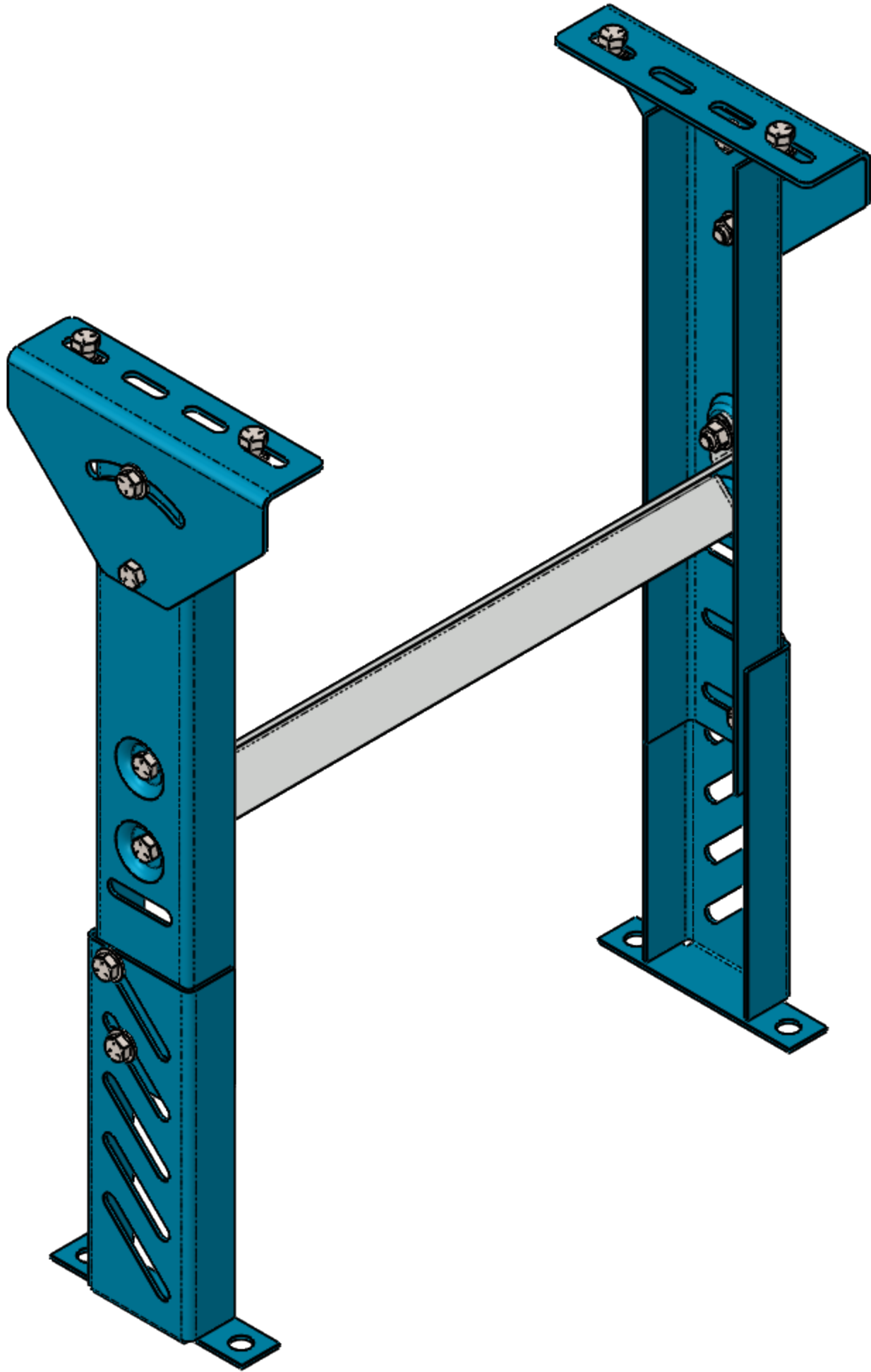
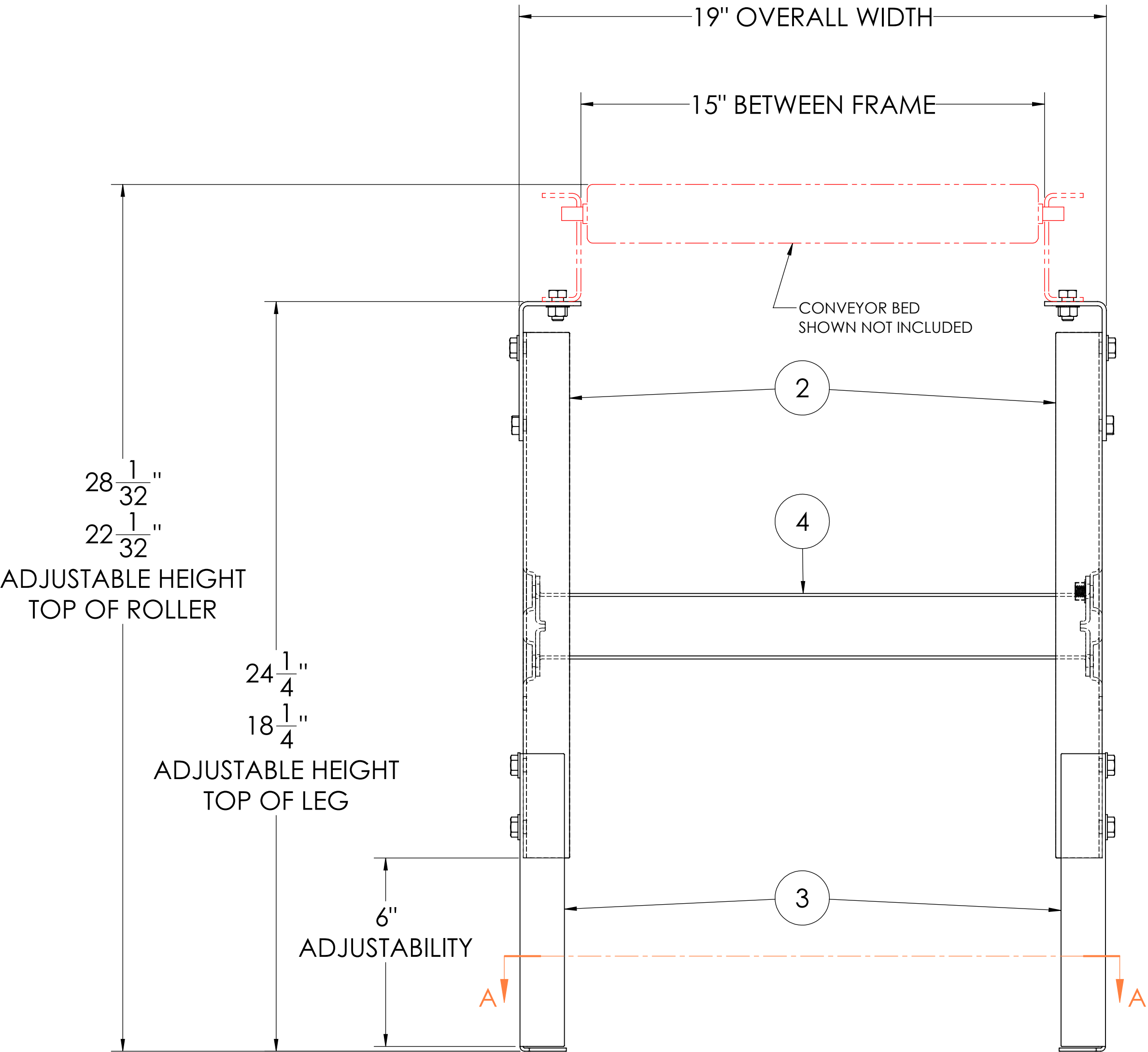
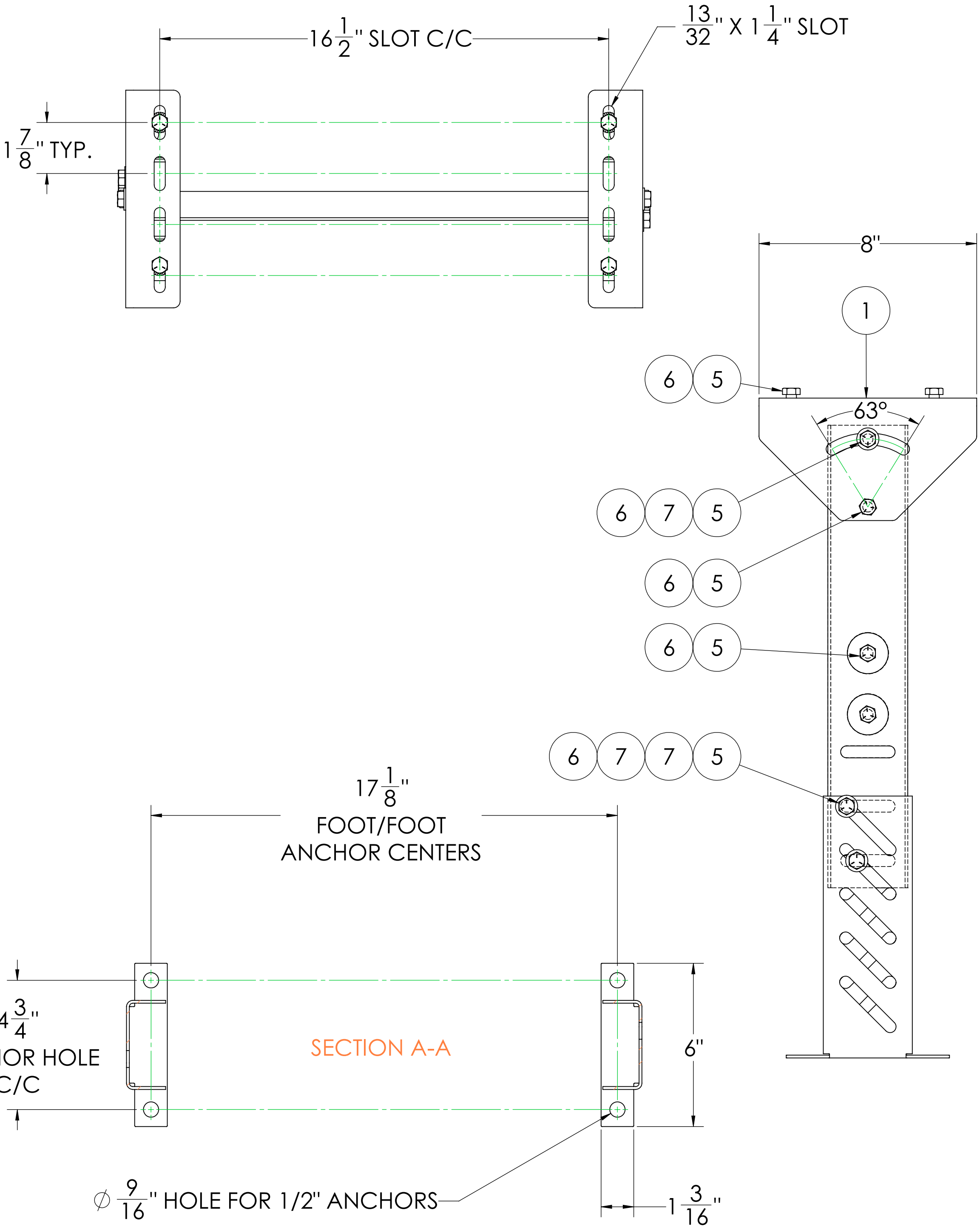


8			7		6	
ITEM NO.	QTY.	PART NO.	DESCRIPTION	MATERIAL	Weight	TOTAL WEIGHT
1	2	U10797	SMS Pivot Plate for Medium Duty Gravity Conveyor	1023 Carbon Steel Sheet (SS)	1.44	2.88
2	2	U10798	SMS-5 Upper Leg for Medium Duty Gravity Conveyor	1023 Carbon Steel Sheet (SS)	2.76	5.52
3	2	U10799	SMS Lower Leg for Medium Duty Gravity Conveyor	1023 Carbon Steel Sheet (SS)	1.68	3.36
4	1	U10800	17.94" Lg Leg Spacer for 15BF SMS	Galvanized Steel	2.06	2.06
5	16	N/A	3/8"-16 x 3/4" HHCS, Grade 5, Zinc Plated	Alloy Steel	0.04	0.64
6	16	N/A	3/8"-16 Flange Lock Nut, Zinc Plated	Alloy Steel	0.02	0.32
7	6	N/A	3/8" SAE Flat Washer, Zinc Plated	Alloy Steel	0.007	0.042
TOTAL WEIGHT:						14.822

NOTE:

- FOR 15" BETWEEN FRAME (18" OVERALL)
- 24-1/4" MAX HEIGHT (TOP OF LEG)
- 18-1/4" MINIMUM HEIGHT (TOP OF LEG)
- USE WITH MEDIUM DUTY UI CONVEYOR FRAMES
- FINISH: ULTIMATION BLUE, POWDER COAT
- MAXIMUM LOAD:
  - 1,500 LBS SECURED/LAGGED TO FLOOR
  - 500LBS NO FLOOR CONNECTION

REVISIONS				
REV.	DESCRIPTION	BY	APPROVED	DATE
0	RELEASE FOR MARKETING	TJH	TJH	12/21/2022



**ULTIMATION**

THIRD ANGLE PROJECTION

**Ultimation Industries, LLC**

15935 Sturgeon St, Roseville, MI 48066  
Phone: +1-586-771-1881 ultimationinc.com

DRAWING No.

U10792

UNIT

INCH

SHEET

1

SHEETS

1 of 1

SIZE

D

**LEG SET ASSY FOR MEDIUM DUTY  
ROLLER CONV. 15" BF. 18-1/4" TO  
24-1/4" ELV.**

**PROPRIETARY AND CONFIDENTIAL**

THE INFORMATION CONTAINED IN THIS DRAWING IS THE SOLE PROPERTY OF ULTIMATION. ANY REPRODUCTION IN PART OR AS A WHOLE WITHOUT THE WRITTEN PERMISSION OF ULTIMATION IS PROHIBITED.

SCALE

1:3