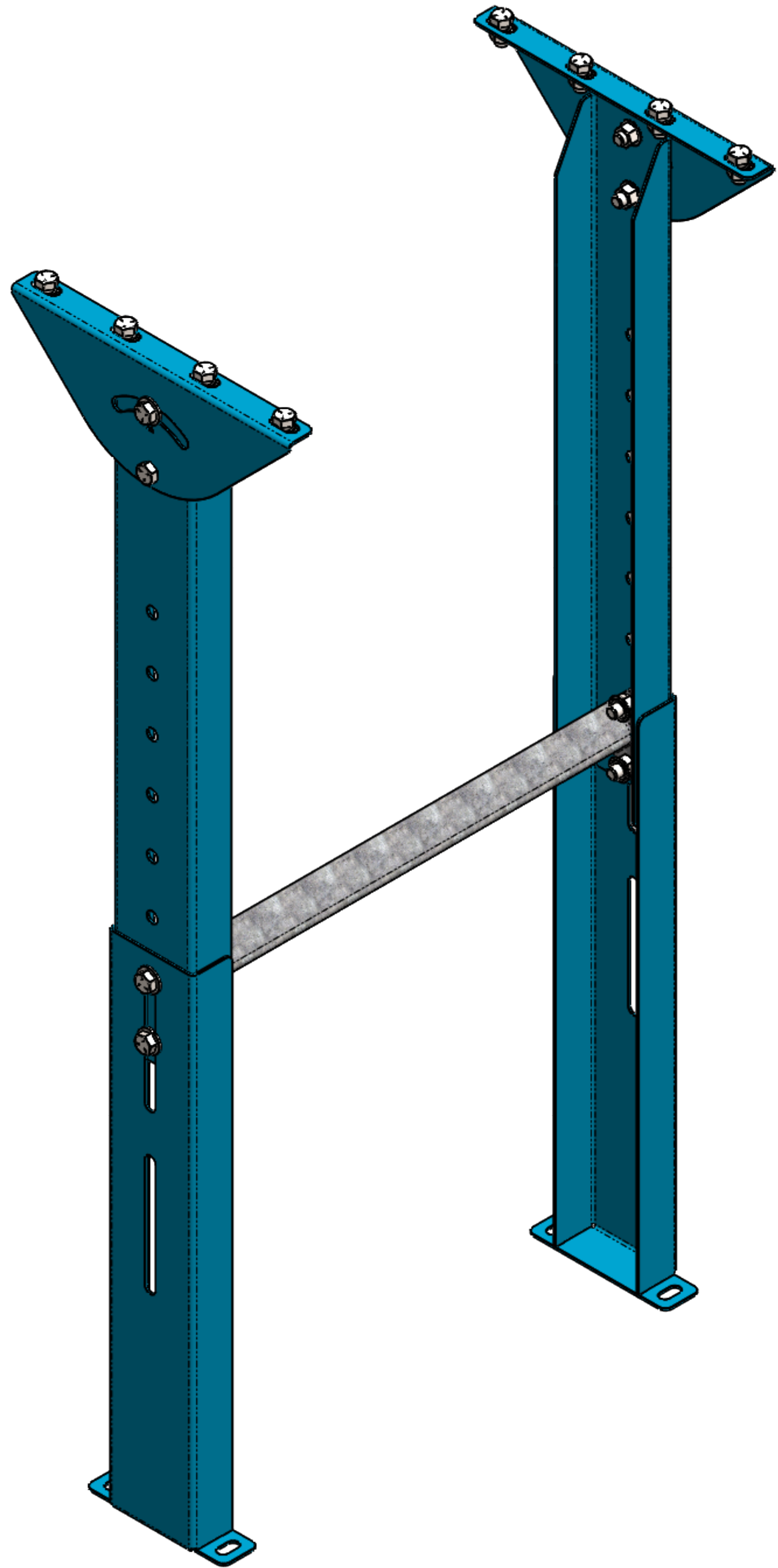
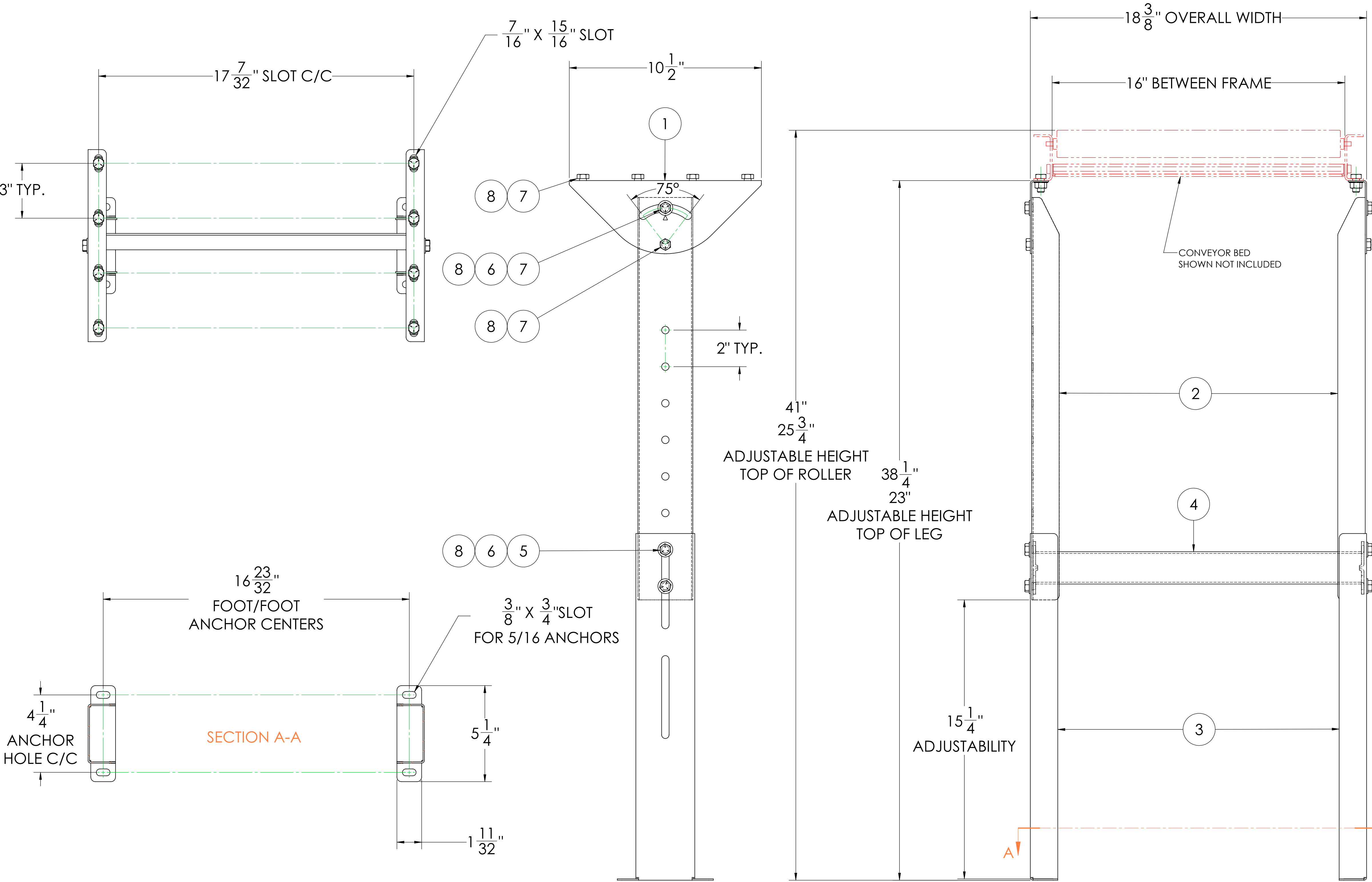


8			7			6	
ITEM NO.	QTY.	PART NO.	DESCRIPTION		MATERIAL	Weight	TOTAL WEIGHT
1	2	U10888	Roller Stand Pivot Plate for Light Duty Conv.		1023 Carbon Steel Sheet (SS)	0.71	1.42
2	2	U10887	Roller Stand Upper Leg For Light Duty Gravity Conveyor		1023 Carbon Steel Sheet (SS)	2.60	5.2
3	2	U10886	Roller Stand Lower Leg For Light Duty Gravity Conveyor		1023 Carbon Steel Sheet (SS)	2.46	4.92
4	1	U10890	18.08in Lg Leg Spacer for 16BF Roller Leg Stand		Galvanized Steel	1.70	1.7
5	4	N/A	3/8"-16 x 1.00" HHCS, Grade 5, Zinc Plated		Alloy Steel	0.05	0.2
6	6	N/A	3/8" SAE Flat Washer, Zinc Plated		Alloy Steel	0.007	0.042
7	12	N/A	3/8"-16 x 3/4" HHCS, Grade 5, Zinc Plated		Alloy Steel	0.04	0.48
8	16	N/A	3/8"-16 Flange Lock Nut, Zinc Plated		Alloy Steel	0.02	0.32
TOTAL WEIGHT:							14.282

- NOTE:
- FOR 16" BETWEEN FRAME (18" OVERALL)
 - 38-1/4" MAX HEIGHT (TOP OF LEG)
 - 23" MINIMUM HEIGHT (TOP OF LEG)
 - USE WITH LIGHT DUTY UI CONVEYOR FRAMES
 - FINISH: ULTIMATION BLUE, POWDER COAT
 - MAXIMUM LOAD:
 - 600LBS SECURED/LAGGED TO FLOOR
 - 300LBS NO FLOOR CONNECTION

REVISIONS				
REV.	DESCRIPTION	BY	APPROVED	DATE
0	RELEASE FOR MARKETING	TJH	TJH	12/21/2022





THIRD ANGLE PROJECTION

Ultimation Industries, LLC

15935 Sturgeon St, Roseville, MI 48066

Phone: +1-586-771-1881 ultimationinc.com

DRAWING No.	U10893	UNIT	INCH	SHEET	1	SHEETS	1 of 1	SIZE	D
-------------	--------	------	------	-------	---	--------	--------	------	---

ROLLER STAND LEG SET ASSY FOR LIGHT DUTY GRAVITY CONV. 16"BF, 23" TO 38-1/4" ELV.

PROPRIETARY AND CONFIDENTIAL

THE INFORMATION CONTAINED IN THIS DRAWING IS THE SOLE PROPERTY OF ULTIMATION. ANY REPRODUCTION IN PART OR AS A WHOLE WITHOUT THE WRITTEN PERMISSION OF ULTIMATION IS PROHIBITED.

SCALE
1:3