



Spare Parts Diagram

To order spare parts, please use diagram and part #s below:

Figure 1 – Spare Parts Diagram Overview

Figure 3 – Heating / Cooling Blocks

Figure 5 – Conveyor Table

Figure 7 – Sealer Body

Last Update: 10/13/21

HL-M810 SPARE PARTS DIAGRAM

HL-M810 SPARE PARTS DIAGRAM

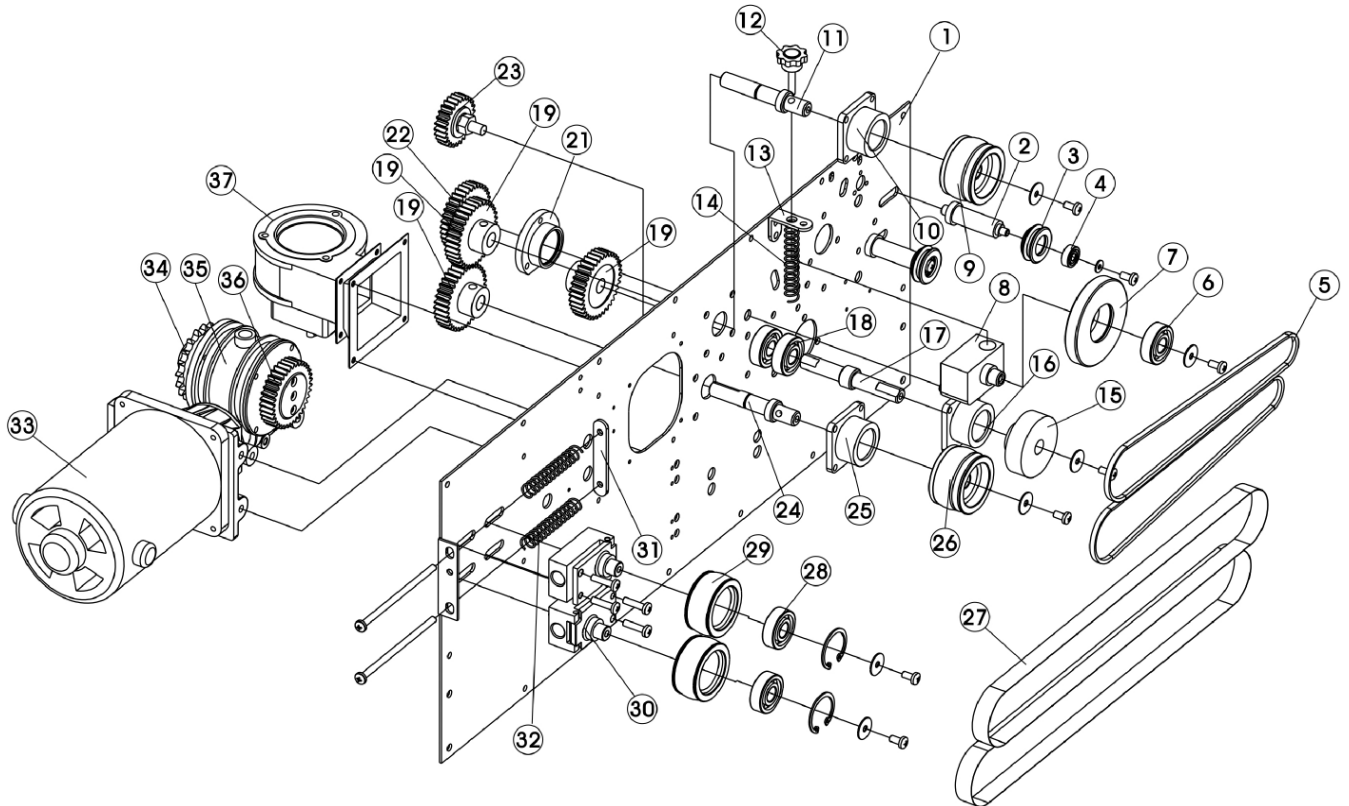


Figure 1. Spare Parts Diagram Overview

HL-M810 SPARE PARTS DIAGRAM

Figure 2. Spare Parts Diagram Overview

Item	Part #	Quantity	Description	Comments
1	HL-M810-84	1	bottom board	
2	CBS-880-6b	2	guiding wheel shaft	
3	CBS-880-6a	2	guiding wheel	Includes #3, #4
4	CBS-880-6a	2	606-2Z bearing	Includes #3, #4
5	HL-M810-26	2	guiding belt	
6	CBS-880-3A	2	6201-Z bearing	Includes #6, #7
7	CBS-880-3A	1	embossing wheel	Includes #6, #7
8	CBS-880-4	1	bearing seat	
9	HL-M810-6	1	driving wheel	
10	CBS-880-6-27	1	bearing seat of driving wheel	
11	CBS-880-6-25	1	driving wheel shaft	
12	BS-5	1	adjusting knob for embossing wheel	
13	BS-5B	1	L-Type Bracket on Pressure Knob	
14	BS-5A	1	adjusting spring for embossing wheel	
15	CBS-880-2	1	silicone wheel assembly	
16	CBS-880-6-27	1	silicone wheel seat	
17	CBS-880-2-31	1	silicone wheel shaft	
18	CBS-880-6-26	2	6201-Z bearing	
19	BS-35B	3	connecting gear	
20				
21	HL-M810-40C	1	bearing seat for connecting shaft	
22	BS-35B	1	connecting gear	
23	BS-35E	1	medium gear	
24	CBS-880-6-25	1	driving wheel shaft	
25	CBS-880-6-27	1	bearing seat of driving wheel	
26	CBS-880-6	1	driving wheel	
27	HL-M810-10	2	sealing belt	
28	CBS-880-12	2	bearing	Includes #28, #29
29	CBS-880-12	2	driven wheel	Includes #28, #29
30	CBS-880-13	1	adjustment block assembly	
31	CBS-880-13D	1	connection piece	
32	CBS-880-13A	2	spring of driven wheel seat - 2 3/8"	
33	CBS-880-29	1	motor (110V)	
	BS-29A	2	motor brush	Not shown.
34	HL-M810-30	1	sprocket	Gen 1.0 or 2.0 Includes #34-36
35	HL-M810-30	1	flange assembly	Gen 1.0 or 2.0 Includes #34-36
36	HL-M810-30	1	output gear	Gen 1.0 or 2.0 Includes #34-36
37	HL-M810-32-horizontal	1	fan - horizontal unit	
37	HL-M810-32-vertical	1	fan - vertical unit	

HL-M810 SPARE PARTS DIAGRAM

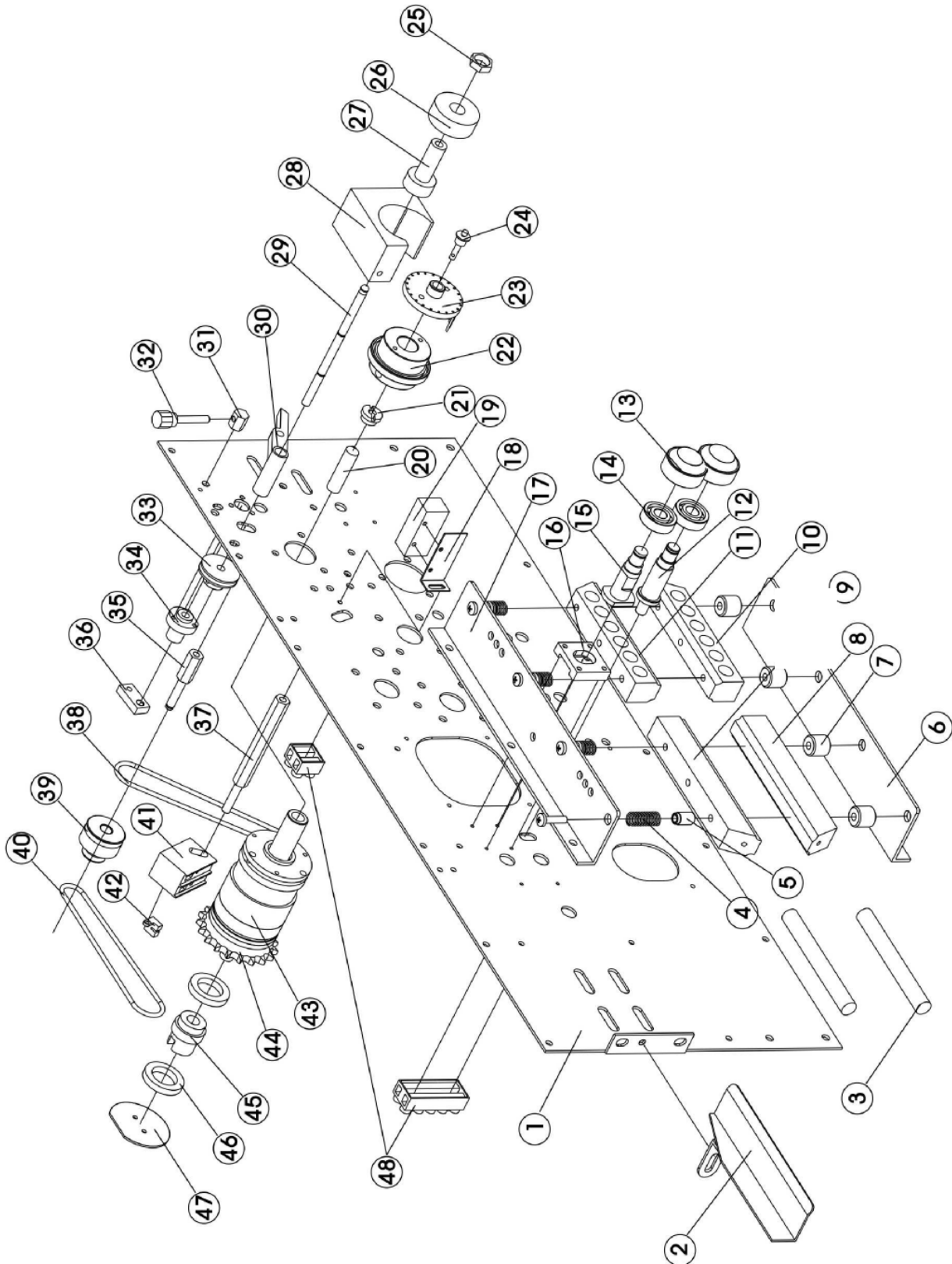


Figure 3. Heating / Cooling Blocks and Dry Ink Coding

HL-M810 SPARE PARTS DIAGRAM

Figure 4. Heating / Cooling Blocks and Dry Ink Coding

Item	Part #	Quantity	Description	Comments
1	HL-M810-84	1	bottom board	
2	HL-M810-44	1	feed opening	Horizontal only
3	BS-9B	2	heating pipe (heat for sealing)	Sold as pair
4	BS-9D	4	spring of copper block	
5		4	guide sleeve of upper holding plate	
6	HL-M810-9-6	1	bottom holding plate	
7	CBS-880-9-10	4	heating block support	
8	HL-M810-9A	1	upper heating block	sold as pair, horizontal is different from vertical
9	HL-M810-9A	1	bottom heating block	sold as pair, horizontal is different from vertical
10	HL-M810-8	1	upper cooling block	sold as pair, horizontal is different from vertical
11	HL-M810-8	1	bottom cooling block	sold as pair, horizontal is different from vertical
12	HL-M810-21-12	1	bottom pinch roller shaft	
13	HL-M810-21	2	pinch roller	Includes #13, #14
14	HL-M810-21	2	bearing 24×8	Includes #13, #14
15	HL-M810-21-15	1	upper pinch roller shaft	
16	HL-M810-21-16	1	slide carriage	
17	HL-M810-9-17	1	upper holding plate	
18	BS-60-18	1	support for photoelectric sensor	
19	BS-60	1	photoelectric sensor	Specify Gen A or Gen B
20	BS-48C	1	heating pipe Φ10 110V 40W	
21	BS-48D	1	end cover of printing wheel shaft	
22	BS-48B	1	printing wheel seat assembly	
23	BS-48A	1	printing wheel cover	Includes #23, #24
24	BS-48A	1	holding latch for printing wheel	Includes #23, #24
25	BS-58	1	straining ring for ink roller sleeve	Includes #25, #27
26	IT-IR-15-COLOR	1	ink roller (15mm)	Black, Blue
	IT-IR-30-COLOR	1	ink roller (30mm)	Black, Blue, Green, Red, Yellow, White
27	BS-58	1	ink roller sleeve	Includes #25, #27
28	HL-M810-47	1	heating block of ink roller	
	BS-61	1	heating element in heating block	
29	BS-46	1	ink roller shaft	
30	BS-62E	1	swing pole of ink roller	
31	BS-62	1	adjusting post for ink roller's swing pole	Includes #31, #32
32	BS-62	1	adjusting knob for ink roller's swing pole	Includes #31, #32
33	BS-54C	1	pulley of ink roller shaft	
34	BS-54C-34	1	seat for ink roller swing pole shaft	
35	BS-54B-35	1	middle pulley shaft	
36	BS-62H	1	pull rod	
37	BS-64B	1	support for brush	
38	BS-54	1	O-Ring (Φ30×60)	
39	BS-54B	1	middle pulley	
40	BS-53	1	O-Ring (Φ30×50)	
41	BS-64A	1	carbon brush holder	
	BS-64	2	carbon brush	
42	BS-65	1	groove sensor	
43	BS-139	1	electromagnetic clutch assembly	Includes #43, 44, 45, 46
44	BS-139	1	driven sprocket	Includes #43, 44, 45, 46
45	BS-139	1	slip-ring core	Includes #43, 44, 45, 46
46	BS-139	2	copper slip ring	Includes #43, 44, 45, 46
47	BS-140	1	anti-dazzling screen	
48	BS-33A		connecting terminal (4P)	
48	BS-33B	3	connecting terminal (10P)	

HL-M810 SPARE PARTS DIAGRAM

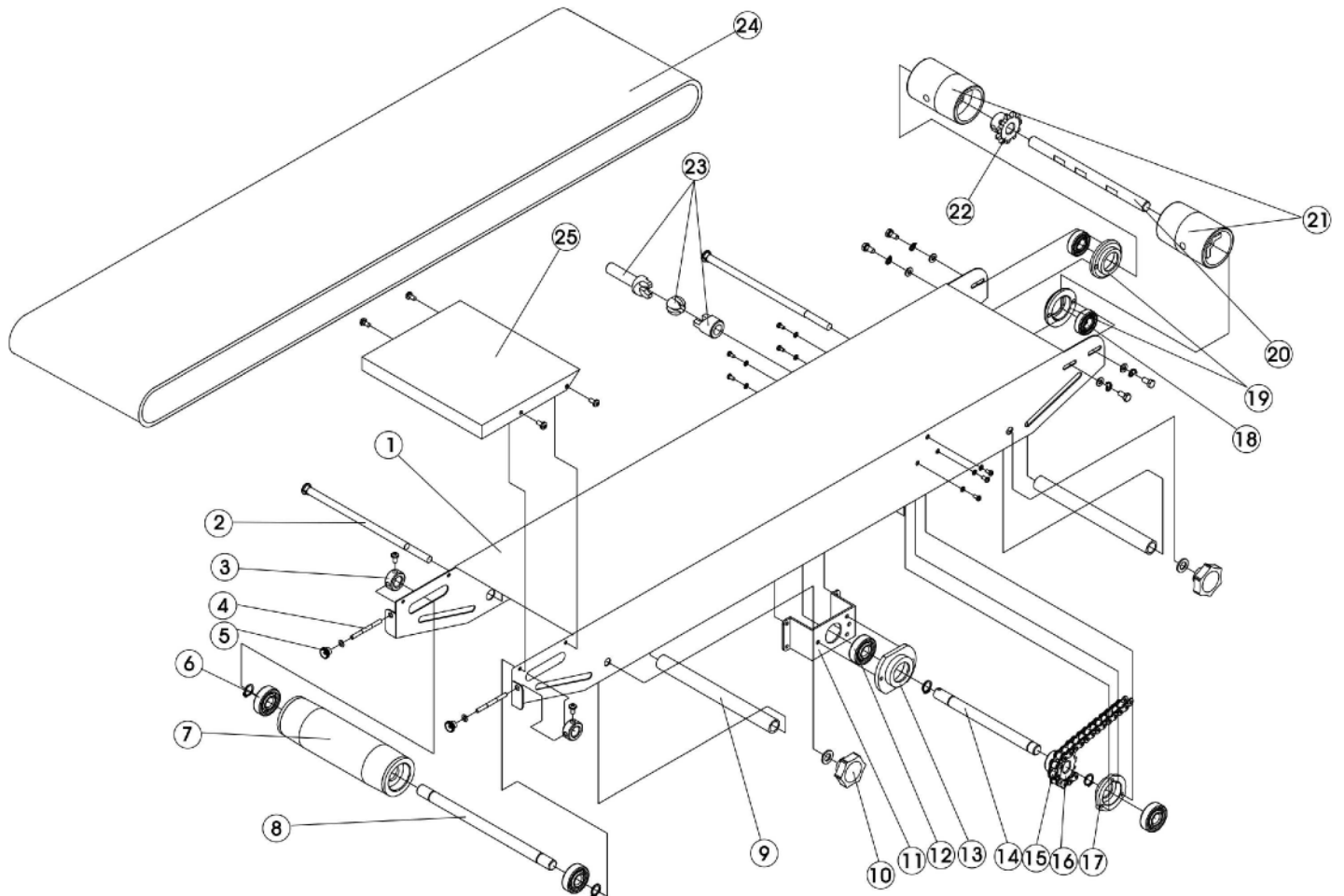


Figure 5. Conveyor Table

HL-M810 SPARE PARTS DIAGRAM

Figure 6. Conveyor Table

Item	Part #	Quantity	Description	Comments
1	HL-M810-20	1	Conveying table (980)	
2	HL-M810-18B	2	oval head square neck bolt	
3	BS-16	2	adjusting block for conveyor belt	Includes #3, #4, #5
4	BS-16	2	double end bolt	Includes #3, #4, #5
5	BS-16	2	adjusting knob for conveyor table	Includes #3, #4, #5
6	HL-M810-36	2	Bearing 6002N	Includes #6, #7, #8
7	HL-M810-36	1	FR-770 rear roller	Includes #6, #7, #8
8	HL-M810-36	1	FR-770 conveying table rear shaft	Includes #6, #7, #8
9	HL-M810-18C	2	Spacer FR-770	special order
10	HL-M810-41	2	674 knob	Includes #10-15, #17
11	HL-M810-41	1	Central shaft plate FRM-980	Includes #10-15, #17
12	HL-M810-41	3	Bearing 6201-Z	Includes #10-15, #17
13	HL-M810-41	1	Conveying table central shaftsupport I	Includes #10-15, #17
14	HL-M810-41	1	Conveying table central shaft	Includes #10-15, #17
15	HL-M810-41	1	Conveying table sprocket wheel	Includes #10-15, #17
16	HL-M810-38	1	Driving chain	
17	HL-M810-41	1	Conveying table central shaftsupport II	Includes #10-15, #17
18	HL-M810-37	3	Bearing 6201-2Z	Includes #18-22
19	HL-M810-37	2	Front roller shaft bearing support (two holes)	Includes #18-22
20	HL-M810-37	1	Front roller shaft	Includes #18-22
21	HL-M810-37	2	Front roller	Includes #18-22
22	HL-M810-37	1	Conveying table sprocket wheel	Includes #18-22
23	HL-M810-40A	1	980 Gimbal assembly	
24	HL-M810-1	1	Conveyor 1800x135	
25	HL-M810-15	1	worktable	

HL-M810 SPARE PARTS DIAGRAM

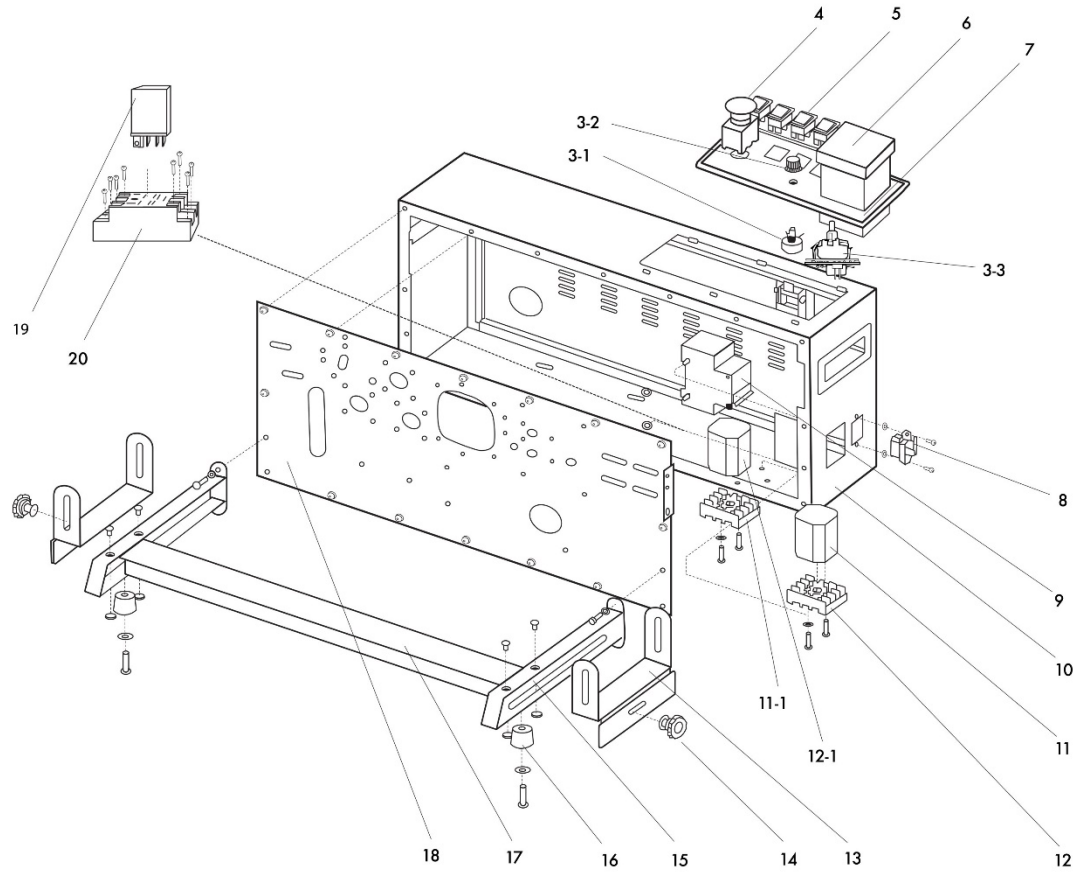


Figure 7. Sealer Body

HL-M810 SPARE PARTS DIAGRAM

Figure 8. Sealer Body

Item	Part #	Description	Quantity	Comments
1	HL-M810-88-1	handle support	2	Includes #1, #2
2	HL-M810-88-1	handle clamp	4	Includes #1, #2
3-1	BS-25	carbon-film potentiometer 220K	1	
3-2	BS-25A	K18-2 knob	1	
3-3	BS-50A	ink temperature potentiometer w/ PC Board	1	
4	BS-22A	emergency stop switch	1	
5	BS-22	springboard switch	3	specify large or small
6	TMC-XMTG-1000-2	temperature controller	1	determine version
	TMC-NG-5000	temperature controller	1	determine version
7	HL-M810-83	plastic panel	1	A: old gen / B: new gen
8	BS-14	10 ^a socket		
9	BS-27	DZ47-2P/5A breaker	1	
10	HL-M810-88	housing	1	
11	BS-52A	speed-regulating plate (8 PINS)	1	
12	BS-45A	PF083A socket	1	
11-1	BS-52C	central circuit plate (11 PINS)		
12-1	BS-45A	PF083A socket	1	
13	HL-M810-18	transition table support	2	Includes #13, #14
14	BS-17	(674 Knob) handle	2	Includes #13, #14
15	HL-M810-68	foot	2	specify left or right
16	BS-67B	rubber foot pad	2	specify A or B
17	HL-M810-68B	rail	1	
18	HL-M810-88-18	soleplate (electrophoresis)	1	Steel: 102102-3

