



FRM-1010 Spare Parts Diagram

To order spare parts, please use diagram and part #s below:

Figure 1 – Spare Parts Diagram Overview

Figure 3 – Heating / Cooling Blocks

Figure 5 – Dry Ink Coding

Figure 7 – Conveyor Table

Figure 9 – Motor / Turbocase

Figure 10 – Sealer Body

FRM-1010 SPARE PARTS DIAGRAM

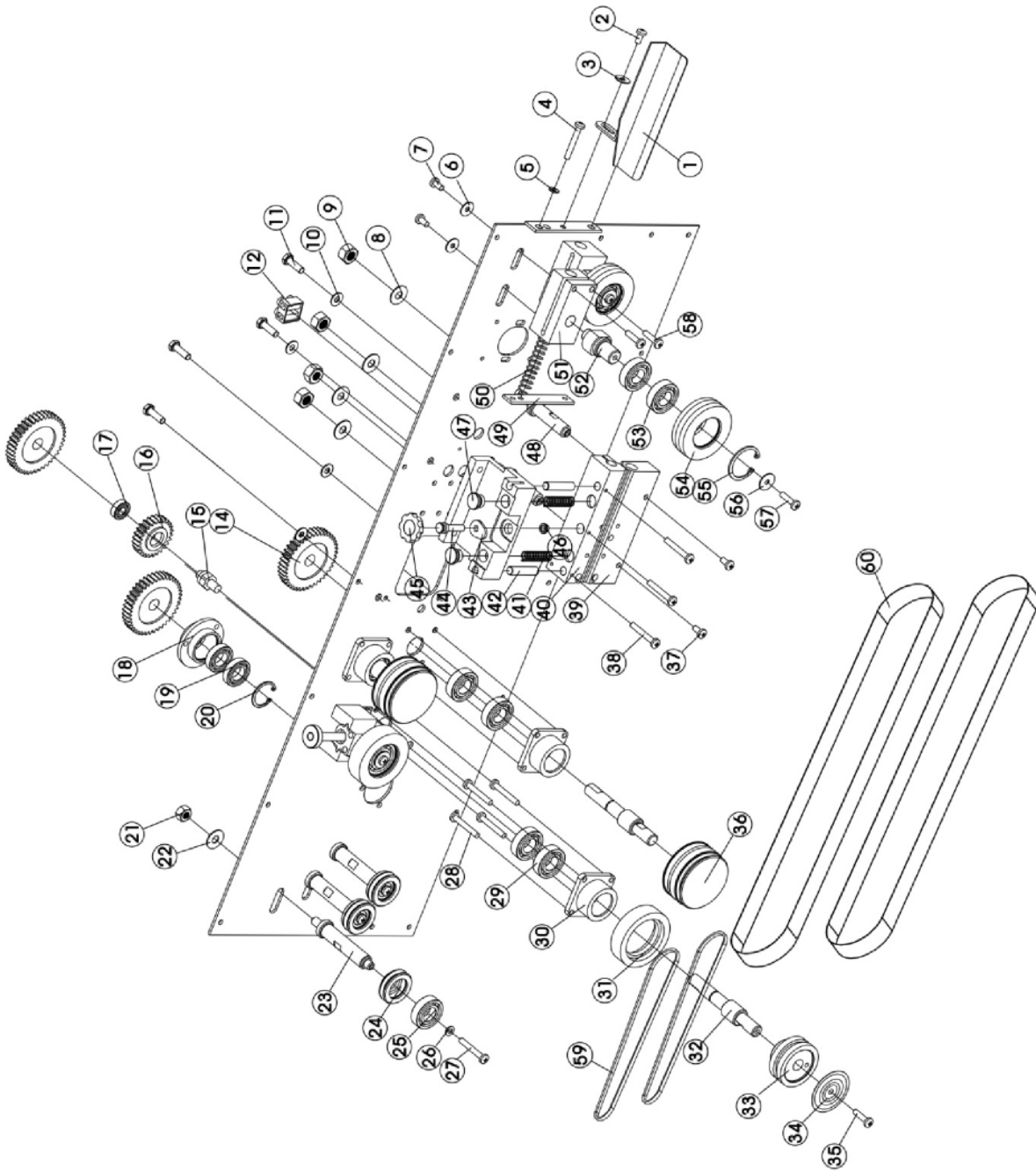


Figure 1. Spare Parts Diagram Overview

FRM-1010 SPARE PARTS DIAGRAM

Figure 2. Spare Parts Diagram Overview

Item	Part #	Quantity	Description	Comments
1	FRM-1010-44	1	feed opening	
2			plus screw	
3			washer	
4			plus screw	
5			washer	
6			washer	
7			screw	
8			washer	
9			hexagon nut	
10			washer	
11			hexagon nut	
12	BS-33A	1	wiring terminal(H5219-2T)	
14	FRM-1010-35B		drive gear	
15		1	driven wheel shaft	
16	FRM-1010-35E		driven gear	
17			bearing of driven wheel	
18		1	bearing seat	
19			bearing	
20			circlip	
21			hexagon nut	
22			washer	
23		2	shaft of small pulley	
24		2	small pulley	
25			bearing of small pulley	
26			washer	
27			plus screw	
28			plus screw	
29			bearing of silicone wheel	
30	CBS-880-6-27A	2	bearing seat	

FRM-1010 SPARE PARTS DIAGRAM

Item	Part #	Quantity	Description	Comments
31	BS-57A	1	silicone wheel	
32		1	silicone wheel shaft	
33			silicone wheel	
34	BS-57	1	cover of silicone wheel	
35			plus screw	
36	FRM-1010-6	2	driving wheel	
37	Screw-BS-M3x6		screw M3x6	
38	Screw-BS-M4x35		screw M4x35	
39	FRM-1010-9A	1	bottom heating block	Includes #39, 40
40	FRM-1010-9A	1	upper heating block	Includes #39, 40
41	FRM-1010-8/9-41		regulating spring	
42	FRM-1010-8/9-42	2	guide post	
43	FRM-1010-8/9-43		adjusting nut	
44	FRM-1010-8/9-44.46	2	adjusting screw	Includes #44, 46
45	FRM-1010-8/9-45		knob of control rod	
46	FRM-1010-8/9-44.46		spring seat	Includes #44, 46
47	FRM-1010-8/9-47	4	adjusting screw	
48		2	shaft of heating block	
49		1	spring seat of driven wheel	
50			adjusting spring of driven wheel	
51	FRM-1010-13	2	adjusting seat of driven wheel	
52		2	driven wheel shaft	
53	FRM-1010-12		bearing	Includes #53,54
54	FRM-1010-12	1	driven wheel	Includes #53,54
55			circlip	
56			washer	
57			plus screw	
58			plus screw	
59	FRM-1010-26	2	guiding belt	
60	FRM-1010-10	2	sealing belt	

FRM-1010 SPARE PARTS DIAGRAM

FRM-1010 SPARE PARTS DIAGRAM

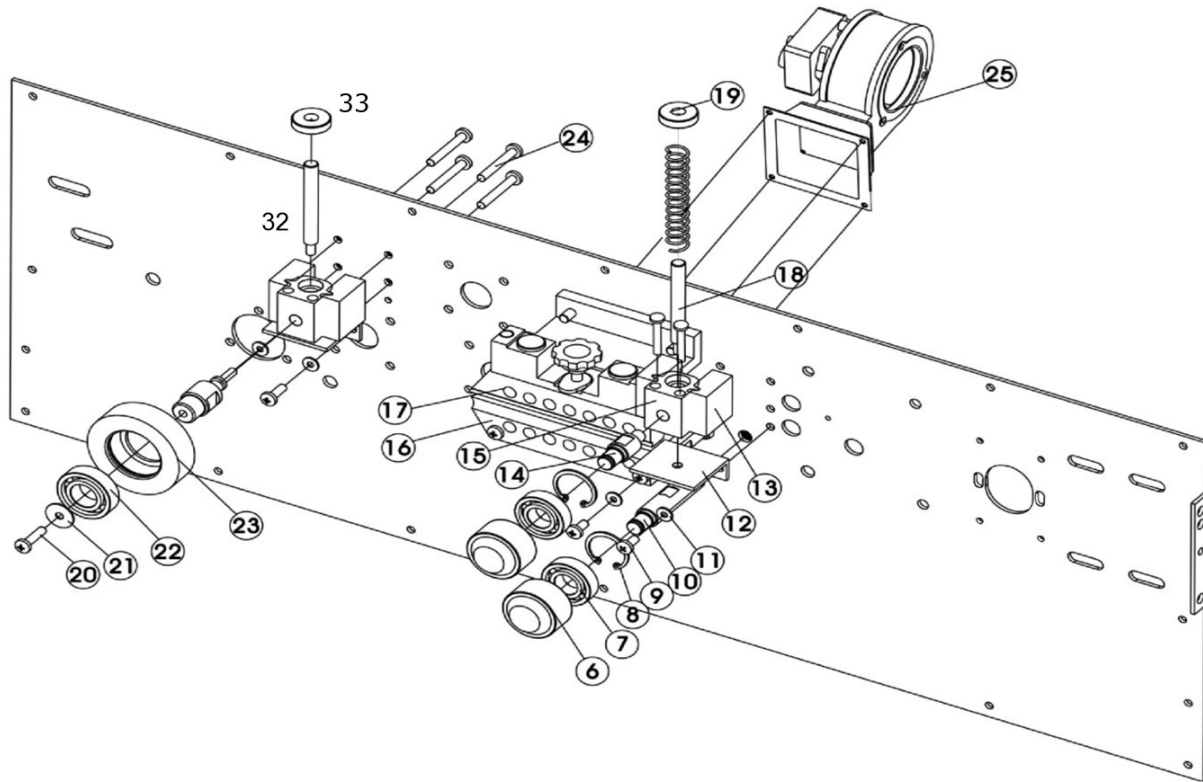


Figure 3. Heating / Cooling Blocks

FRM-1010 SPARE PARTS DIAGRAM

Figure 4. Heating / Cooling Blocks

Item	Part #	Quantity	Description	Comments
6	FRM-1010-21	2	pinch roller	Includes #6, #7
7	FRM-1010-21		bearing of pinch roller	Includes #6, #7
8			circlip	
9			plus screw	
10		1	shaft of pinch roller	
11			washer	
12			seat for adjusting screw	
13	FRM-1010-8-13		guide rail of embossing rollerseat	
14			upper pinch roller seat	
15		1	embossing roller seat	
16	FRM-1010-8	1	bottom cooling block	Includes #16, 17
17	FRM-1010-8	1	upper cooling block	Includes #16, 17
18	FRM-1010-21-18		control rod	
19	FRM-1010-21-19		knob of control rod	
	FRM-1010-21-19a		spring	
20			plus screw	
21			washer	
22			bearing	
23		1	embossing roller	
24			plus screw	
25	HL-M810-32	1	fan assembly (CY063)	
26				
27				
28				
29				
30				
31				
32	FRM-1010-21-18		control rod	
33	FRM-1010-21-19		knob of control rod	

FRM-1010 SPARE PARTS DIAGRAM

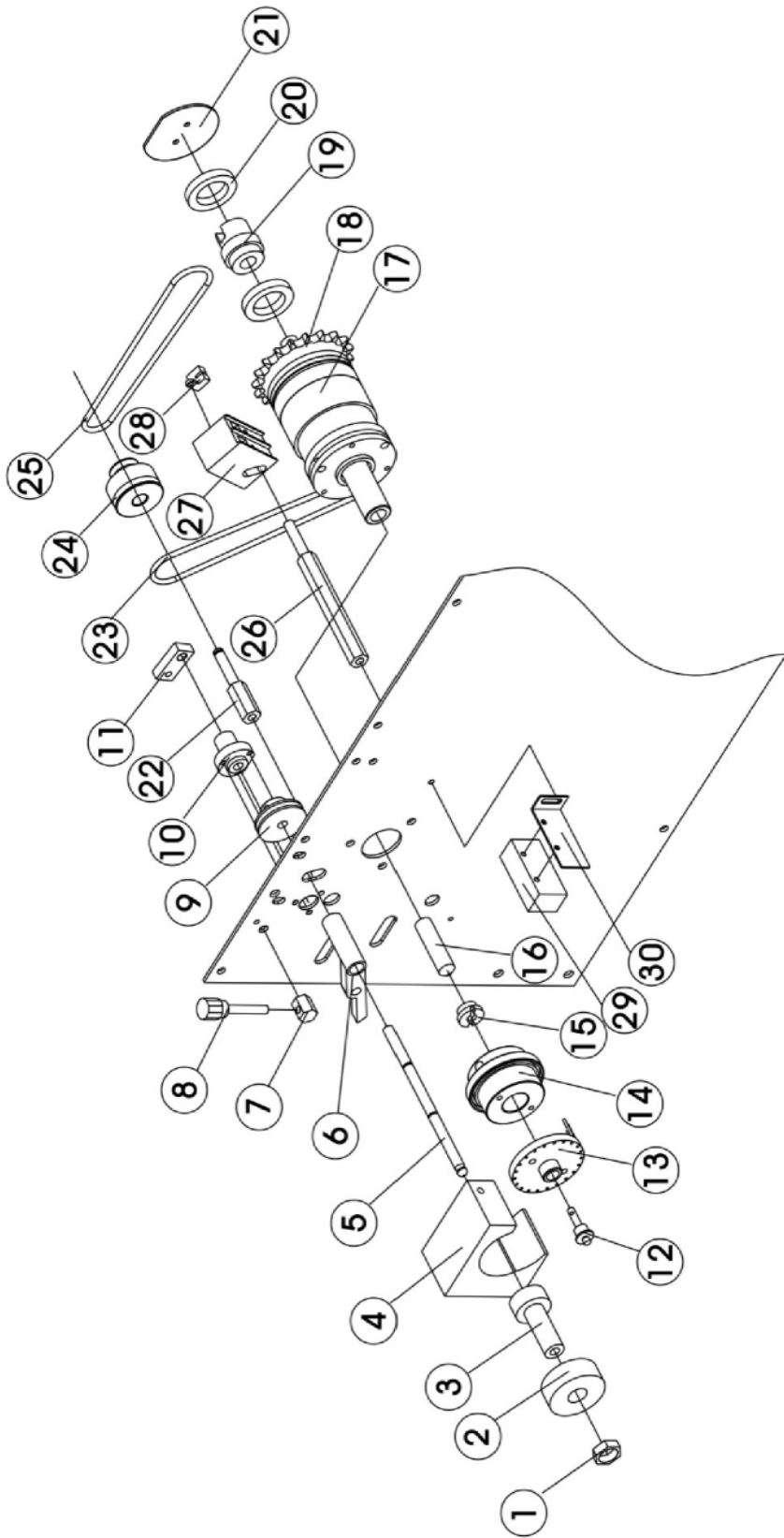


Figure 5. Dry Ink Coding

Figure 6. Dry Ink Coding

Item	Part #	Quantity	Description	Comments
1	BS-58	1	jam nut	Includes #1, 3
2	IT-IR-15-Color	1	ink roller (15mm)	
	IT-IR-30-Color		ink roller (30mm)	
3	BS-58	1	ink roller sleeve	Includes #1, 3
4	FRM-1120C-47	1	heating block of ink roller	
5	BS-46	1	ink roller shaft	
6	BS-62E-FRM	1	swing pole of ink roller	
7	BS-62		adjusting post for ink roller's swing pole	Includes #7, 8
8	BS-62		adjusting knob for ink roller's swing pole	Includes #7, 8
9	BS-54C	1	pulley of ink roller shaft	
10	BS-54C-34	1	seat for ink roller swing pole shaft	
11	BS-62H	1	pull rod	
12	BS-48A	1	holding latch for printing wheel	Includes #12,13
13	BS-48A	1	printing wheel cover	Includes #12,13
14	BS-48B	1	printing wheel seat assembly	
15	BS-48D	1	end cover of printing wheel shaft	
16	BS-48C	1	heating tube $\Phi 10$ 110V 40W	
17	BS-139-FRM-1010	1	electromagnetic clutch assembly	Includes #17-20
18	BS-139-FRM-1010	1	driven sprocket	Includes #17-20
19	BS-139-FRM-1010	1	slip ring core	Includes #17-20
20	BS-139-FRM-1010	2	copper slip ring	Includes #17-20
21	BS-140		anti-dazzling screen	
22	BS-54B-35	1	middle pulley shaft	
23	BS-54	1	O-Ring ($\Phi 30 \times 60$)	
24	BS-54B	1	middle pulley	
25	BS-53	1	O-Ring ($\Phi 30 \times 50$)	
26	BS-64B	1	support for brush	
27	BS-64A	1	carbon brush holder	
	BS-64	2	carbon brush	
28	BS-65	1	groove sensor	
29	BS-60	1	photoelectric sensor	
30	BS-60-18	1	support for photoelectric sensor	

FRM-1010 SPARE PARTS DIAGRAM

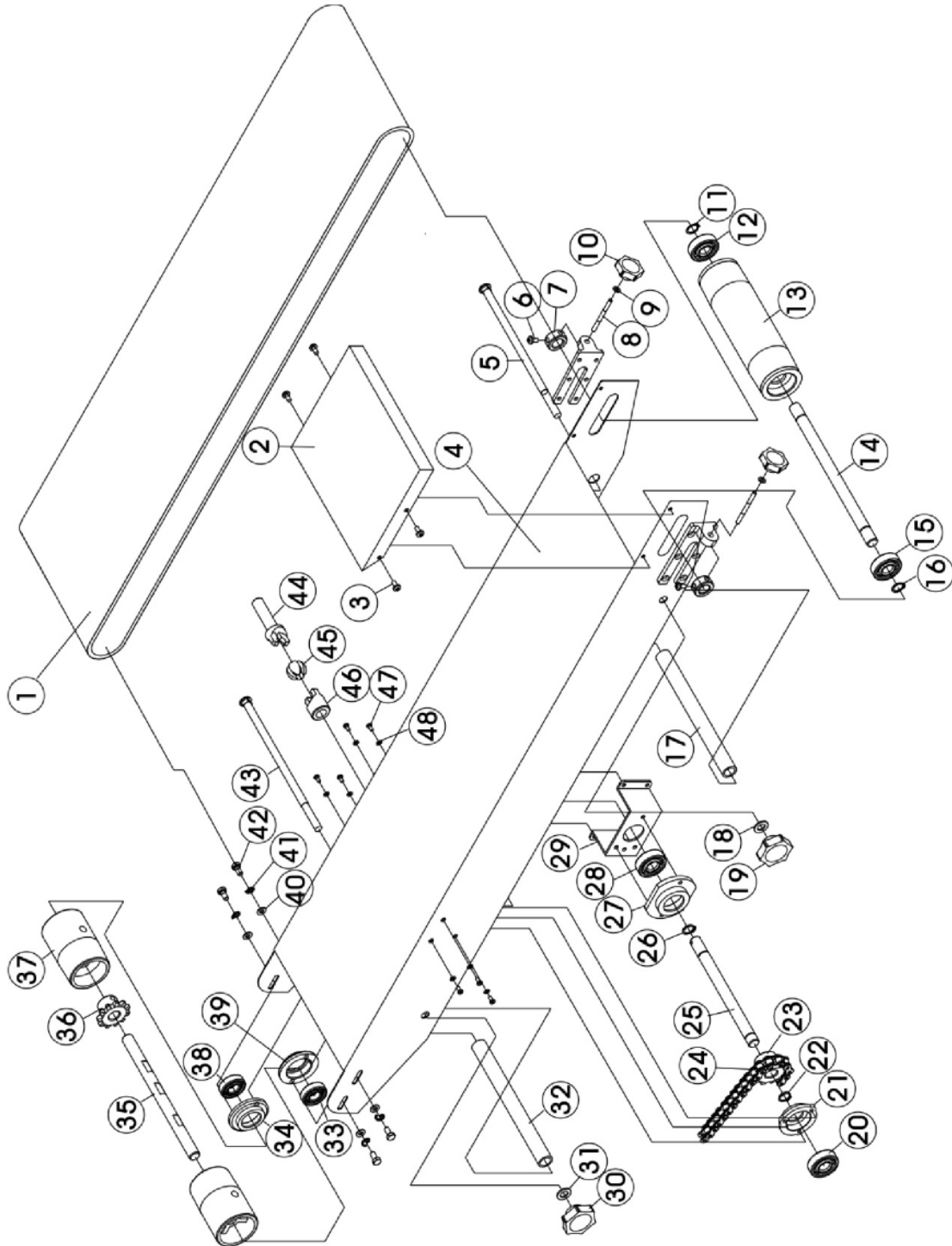


Figure 7. Conveyor Table

FRM-1010 SPARE PARTS DIAGRAM

Figure 8. Conveyor Table

Item	Part #	Quantity	Description	Comments
1	FRM-1010-1	1	conveyor belt	
2	FRM-1010-15	1	stock supporting plate	
3			plus screw	
4	FRM-1010-20		conveyor table	
5	FRM-1010-18		half-round square neck bolt	Includes #5, 17-19
6	FRM-1010-16		plus screw	Includes #6-10
7	FRM-1010-16		adjusting block of conveyor belt	Includes #6-10
8	FRM-1010-16		double end bolt	Includes #6-10
9	FRM-1010-16		washer	Includes #6-10
10	FRM-1010-16	4	knob	Includes #6-10
11	FRM-1010-36		circlip	Includes #11-16
12	FRM-1010-36		bearing	Includes #11-16
13	FRM-1010-36	1	rear roller (right conveyor roller)	Includes #11-16
14	FRM-1010-36	1	rear roller shaft	Includes #11-16
15	FRM-1010-36		bearing	Includes #11-16
16	FRM-1010-36		circlip	Includes #11-16
17	FRM-1010-18	2	separating tube	Includes #5, 17-19
18	FRM-1010-18		washer	Includes #5, 17-19
19	FRM-1010-18	8	knob	Includes #5, 17-19
20	FRM-1010-41		bearing	Includes #20-23, 25-29
21	FRM-1010-41		bearing seat	Includes #20-23, 25-29
22	FRM-1010-41		circlip	Includes #20-23, 25-29
23	FRM-1010-41	1	sprocket of conveyor table	Includes #20-23, 25-29
24	FRM-1010-38	1	chain	
25	FRM-1010-41	1	middle shaft of conveyor table	Includes #20-23, 25-29
26	FRM-1010-41		circlip	Includes #20-23, 25-29
27	FRM-1010-41		bearing seat	Includes #20-23, 25-29
28	FRM-1010-41		bearing	Includes #20-23, 25-29
29	FRM-1010-41		underlay plate of middle shaft	Includes #20-23, 25-29
30	BS-17		knob	
31	FRM-1010-18		washer	
32	FRM-1010-18		separating tube	
33	FRM-1010-37		bearing	Includes #33-39
34	FRM-1010-37		bearing seat	Includes #33-39
35	FRM-1010-37		front roller shaft (left)	Includes #33-39
36	FRM-1010-37	1	sprocket of conveyor table	Includes #33-39
37	FRM-1010-37	1	front roller	Includes #33-39
38	FRM-1010-37		bearing	Includes #33-39
39	FRM-1010-37		bearing seat	Includes #33-39
40			flat washer	
41			spring washer	
42			plus screw	
43			half-round square neck bolt	
44	FRM-1010-40A		adjusting shaft	Includes #44-46
45	FRM-1010-40A		connecting ball	Includes #44-46
46	FRM-1010-40A		connector	Includes #44-46
47			plus screw	
48			flat washer	

FRM-1010 SPARE PARTS DIAGRAM

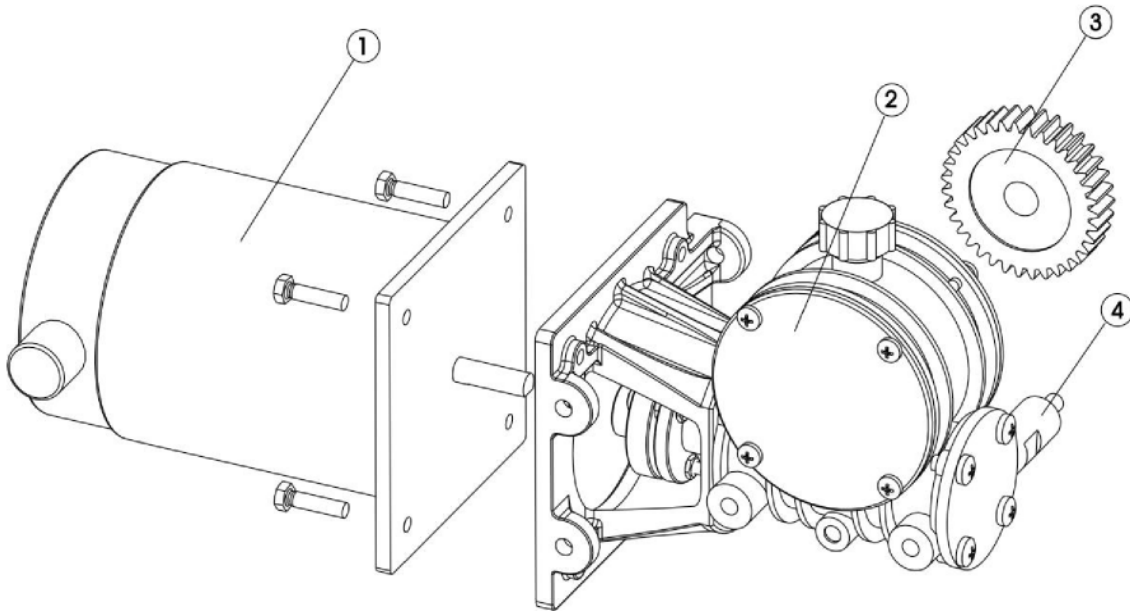


Figure 9. Motor / Turbocase

Item	Part #	Description	Quantity	Comments
1	CBS-880-29	110V DC motor	1	
	FRM-1010-20_Gen2.0	110V DC motor	1	
	BS-29A	motor brush	2	Not shown.
2	FRM-1010-30	worm-gear case assembly	1	
3		driving gearwheel	1	
4		pig iron gearwheel / turbocase support	1	

FRM-1010 SPARE PARTS DIAGRAM

FRM-1010 SPARE PARTS DIAGRAM

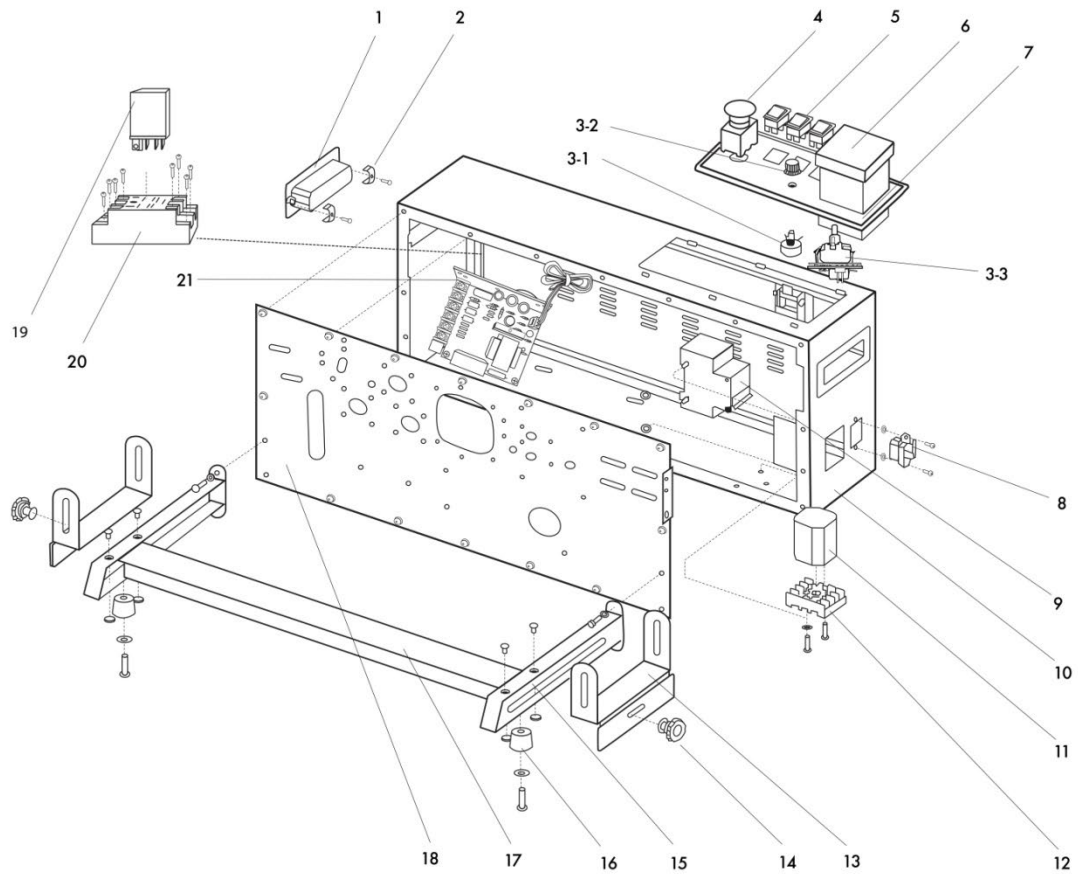


Figure 10. Sealer Body

FRM-1010 SPARE PARTS DIAGRAM

Figure 11. Sealer Body

Item	Part #	Description	Quantity	Comments
1	FRM-1010-88-1	handle support	2	Includes #1, #2
2	FRM-1010-88-1	handle clamp	4	Includes #1, #2
3-1	BS-25	carbon-film potentiometer 220K	1	
3-2	BS-25A	K18-2 knob	1	
3-3	BS-50A	ink temperature potentiometer w/ PC Board	1	
4	BS-22A	emergency stop switch	1	
5	BS-22	springboard switch	3	specify large or small
6	TMC-XMTG-1000-2	2301 temperature controller	1	
	TMC-NG-5000	temperature controller	1	determine version
7	FRM-1010-83	plastic panel	1	A: old gen / B: new gen
8	BS-14	10 ^a socket		
9	BS-27	DZ47-2P/5A breaker	1	
10	FRM-1010-88	housing	1	
11	BS-52A	speed-regulating plate (8 PINS)	1	
12	BS-45A	PF083A socket	1	
13	FRM-1010-18	transition table support	2	Includes #13, #14
14	BS-17	(674 Knob) handle	2	Includes #13, #14
15	FRM-1010-68	foot	2	specify left or right
16	BS-67B	rubber foot pad	2	specify A or B
17	FRM-1010-68B	rail	1	
18	FRM-1010-88-18	soleplate (electrophoresis)	1	Steel: 102102-3
19	R-JQX-13F	relay	1	
20	BS-74A	seat for relay	1	
21	FRM-1010-31	PC Board	1	

FRM-1010 SPARE PARTS DIAGRAM

FRM-1010 SPARE PARTS DIAGRAM

FRM-1010 SPARE PARTS DIAGRAM

FRM-1010 SPARE PARTS DIAGRAM

